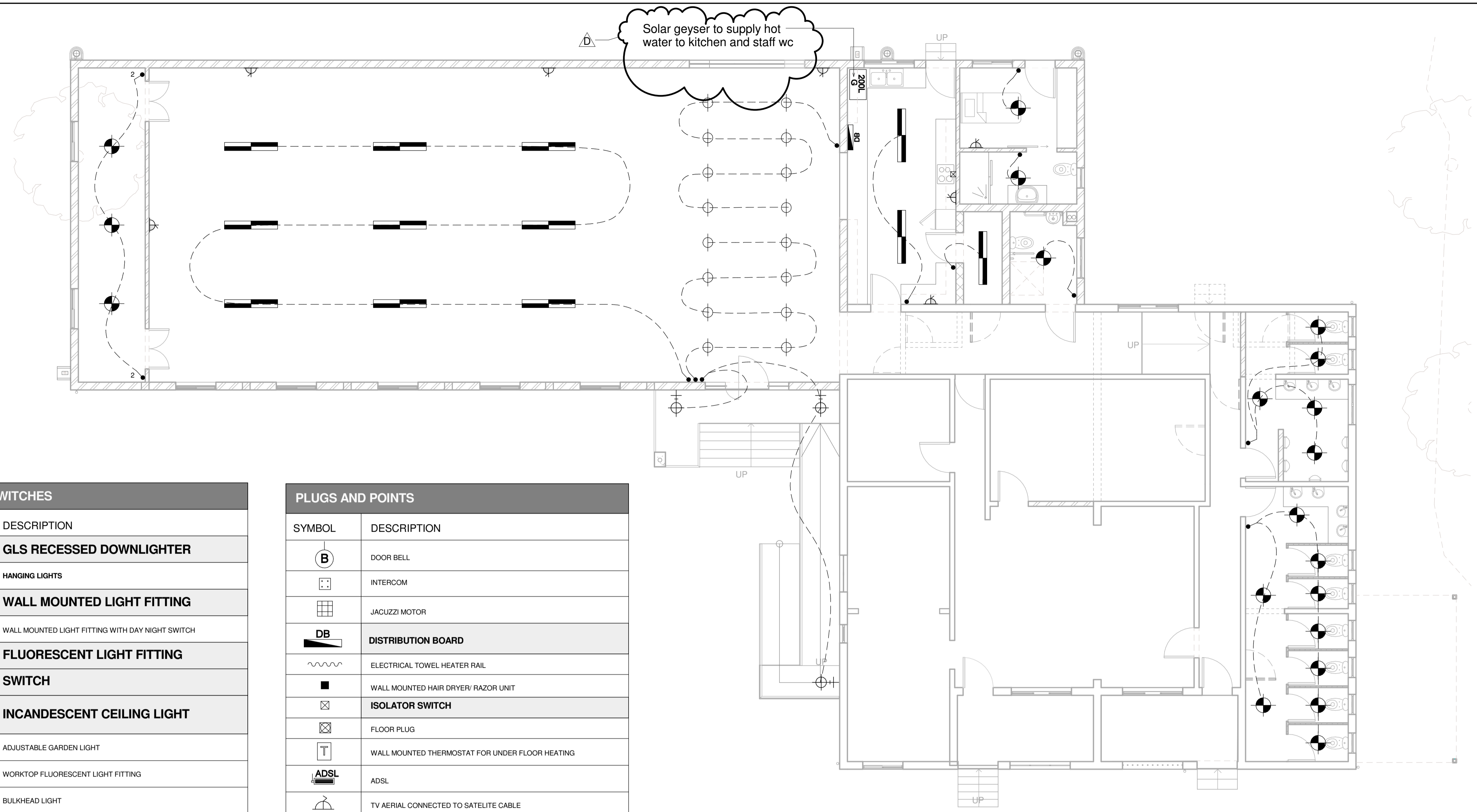


Revision Schedule		
Rev	Date	Description
A	09/02/2013	Ready for Council Submission
B	21/11/2012	Costing
C	29/01/2013	Revised Design
D	28-01-2014	Cement Screed note added to ramp, folding stacking doors from foyer/dining area into examination space omitted, solar geyser to supply kitchen and staff wc, existing floor finish in storage space, existing entrance to be kept as is.



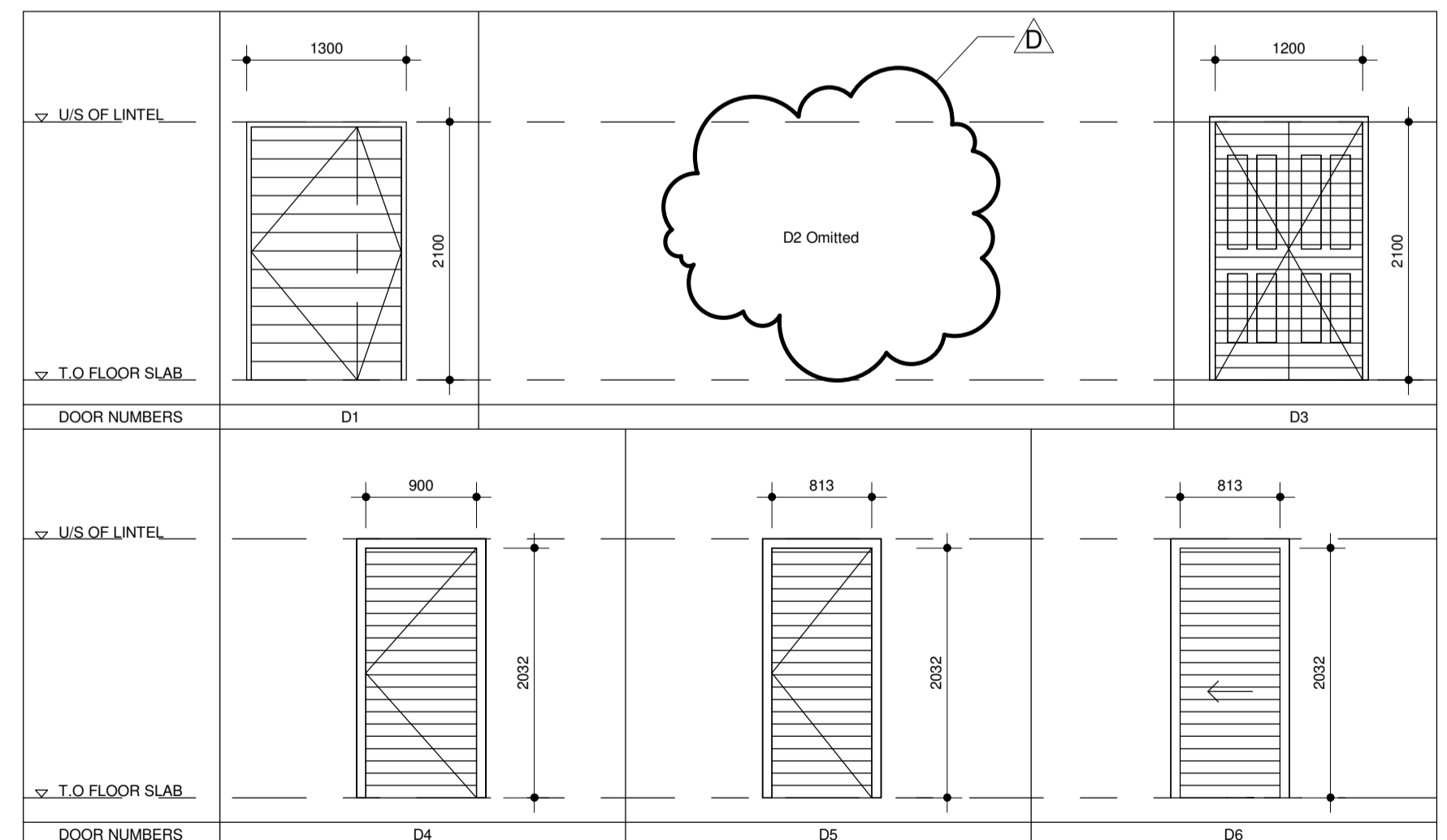
1 Electrical Layout
1 : 75

LIGHTS AND SWITCHES	
SYMBOL	DESCRIPTION
	GLS RECESSED DOWNLIGHTER
	HANGING LIGHTS
	WALL MOUNTED LIGHT FITTING
	WALL MOUNTED LIGHT FITTING WITH DAY NIGHT SWITCH
	FLUORESCENT LIGHT FITTING
	SWITCH
	INCANDESCENT CEILING LIGHT
	ADJUSTABLE GARDEN LIGHT
	WORKTOP FLUORESCENT LIGHT FITTING
	BULKHEAD LIGHT
	IN CUPBOARD LIGHTING
	OUTDOOR WALLMOUNTED LIGHT
	WALL MOUNTED UPLIGHTER
	2 WAY SWITCH
	DIMMER SWITCH
	FISH POND / WATER FEATURE LIGHT
	LIGHT SENSOR
	CEILING FAN
	STAIRCASE FOOT LIGHT
	GARDEN LIGHT FITTING WITH DAYLIGHT SENSOR
	SECURITY LIGHT WITH DAYLIGHT SENSOR
	ELECTRIC GEYSER
	GAS GEYSER
	SOLAR PANEL

PLUGS AND POINTS	
SYMBOL	DESCRIPTION
	DOOR BELL
	INTERCOM
	JACUZZI MOTOR
	DISTRIBUTION BOARD
	ELECTRICAL TOWEL HEATER RAIL
	WALL MOUNTED HAIR DRYER/ RAZOR UNIT
	ISOLATOR SWITCH
	FLOOR PLUG
	WALL MOUNTED THERMOSTAT FOR UNDER FLOOR HEATING
	ADSL
	TV AERIAL CONNECTED TO SATELITE CABLE
	STORAGE TANKS
	TELEPHONE
	WATERPROOF 15 AMP PLUG DBL 300 FFL CNTR OF PLUG
	SNGL 15 AMP PLUG 300 FFL CNTR OF PLUG
	DBL 15 AMP PLUG 1200 FFL CNTR OF PLUG
	DBL 15 AMP PLUG 300 FFL CNTR OF PLUG
	POWER SUPPLY FOR AUTOMATIC GARAGE DOOR
	AIR-CONDITIONING MOTOR
	GENERATOR
	SATELITE DISH

Plugs and Points
1 : 50

Door Schedule						
Door Type	Width	Height	Description	Frame Material	Fire Rating	Count
D1	1300	2100	44mm thick horizontal slated hardwood pivot door, sealed with linseed oil based transit stabilizing sealer	Standard Steel Frame to suite brickwork	N/A	1
D2	1200	2100	1200 x 2100, 44mm thick meranti double side door	Standard Steel Frame to suite brickwork	N/A	2
D3	900	2032	900 x 2032 Solid meranti sliding door	Standard aluminium to suite brickwork	N/A	18
D4	813	2032	813 x 2032 Solid meranti door	Standard aluminium to suite partitions	N/A	11
D5	915	2125	813 x 2032 Solid meranti sliding door	Standard Steel Frame to suite brickwork	N/A	1



Door Schedule
1 : 50

Lighting Layout
1 : 50

SIGNED FOR CONSTRUCTION

ARCHITECT:

CLIENT:

IF THIS DRAWING IS NOT SIGNED BY THE ARCHITECT IT IS NOT FOR CONSTRUCTION PURPOSES

PROJECT
Colleges of Medicine South Africa, Phase 1, ERF 9107/ 9108/ 9109/ 9110 Umbilo. 10/12/14/16 Lichfield Road

DESCRIPTION
Electrical Layout & Door Schedule

C A ARCHITECTS CC
Suite E MGA HOUSE
Wimble Close
Ballito Business Park
Po Box 6438 Zimbabwe 4418
Tel: +27 32 946 3830/1
Fax: +27 86624 9592
email: llewellyn@caarchitects.co.za
reg no 2621



Drawn Denise G	Project nr: 347	Date: 2014/01/28 10:06:41 AM
Sheet nr: 347-WRK01-600	Rev Nr: D	