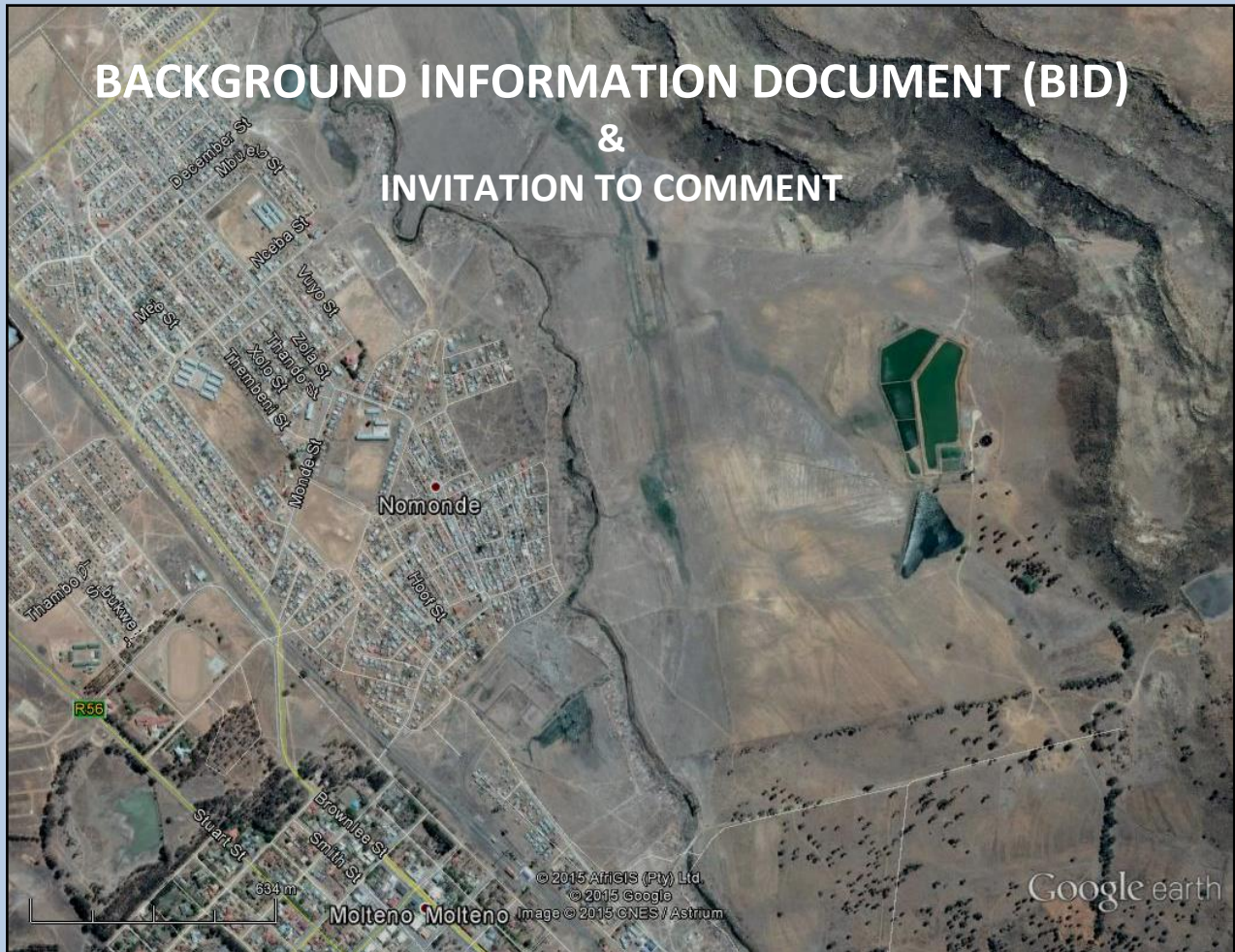


ENVIRONMENTAL IMPACT ASSESSMENT

MOLTENO SEWER & SEWAGE PUMP STATIONS



Proposed by: **CHRIS HANI DISTRICT MUNICIPALITY**

Return address for comments:

EOH Coastal & Environmental Services

Rosalie Evans

16 Tyrell Road

Berea, East London

P.O Box 8145

Nahoon, East London, 5210

Tel: (043) 726 7809

Fax: (043) 726 8352

Email: rosalie.evans@eoh.co.za



AIM OF THIS DOCUMENT

The purpose of this document is to ensure that **people that are interested in or affected by the proposed project are provided with information about the proposal, the process being followed and provided with an opportunity to be involved** in the EA process.

Registering as an **Interested and/or Affected Party (I&AP)** allows individuals or groups the opportunity to **contribute ideas, issues, and concerns relating to the project**. I&APs also have an opportunity to **review all of the reports and submit their comments** on those reports. All of the comments that are received will be included in the reports that are submitted to the Competent Authority.

THE PROPONENT

The Chris Hani District Municipality (CHDM) is one of six district municipalities in the Eastern Cape. The CHDM is the Water Services Provider (WSP) in the Molteno area. In fulfilling its role of WSP the CHDM is responsible for all operation and maintenance of water and sanitation infrastructure in the area.

PROJECT DESCRIPTION

CHDM is proposing the construction of two interceptor sewer pipelines, approximately 1,800m long, to replace the current pump stations and rising mains. They are also proposing the construction of a new Main Sewer Pump Station which will include the following:

- Screening facility;
- Generator room;
- Store room;
- Panel room for MCC;
- Wet well pump station;
- Emergency storage pond;
- Bulk electrical connection;
- Motor control centre;
- Electrical cabling to the equipment;
- Fencing; and a
- Standby generator with an automatic changeover panel.

These developments would result in the existing pump stations becoming redundant and CHDM is therefore proposing to decommission the Existing Main Pump Station, Zwelitsha Pump Station and the Methodist Pump Station.

CHDM is proposing the construction of a sewer rising main of approximately 2, 100m in length from the proposed New Main Pump Station to the Molteno Waste Water Treatment Works (WWTW).

THE ENVIRONMENTAL ASSESSMENT PRACTITIONER

Coastal & Environmental Services (CES) was established in 1990 as a specialist environmental consulting company.

Recently EOH Group of Companies acquired the shares in CES. EOH is the largest provider of enterprise applications, technology, outsourcing, cloud and managed services. The group is active in South Africa, Africa and the United Kingdom and has a strong Black Economic Empowerment profile. This integration will allow CES to combine EOH's great reach and reputation with CES's recognised excellence in environmental and social advisory services, thus maximising CES's strengths and comprehensive offerings in the environmental and social fields.

EOH-CES has considerable experience in terrestrial, marine and freshwater ecology, the Social Impact Assessment (SIA) process, State of Environment Reporting (SOER), Integrated Waste Management Plans (IWMP), Environmental Management Plans (EMPs), Spatial Development Frameworks (SDF), public participation, as well as the management and co-ordination of all aspects of the Environmental Impact Assessment (EIA) and Strategic Environmental Assessment (SEA) processes (www.cesnet.co.za). EOH-CES has been active in all of the above fields, and in so doing have made a positive contribution towards environmental management and sustainable development in the Eastern Cape, South Africa and many other African countries. We believe that a balance between development and environmental protection can be achieved by skilful, considerate and careful planning

THE ENVIRONMENTAL IMPACT ASSESSMENT PROCESS

According to Environmental Impact Assessment (EIA) regulations (2010 as amended in 2013), promulgated under the National Environmental Management Act (No. 107 of 1998), listed activities need to be assessed. In this case the following project activities require that a Basic Assessment be submitted for environmental authorisation of the proposed sewerage infrastructure development:

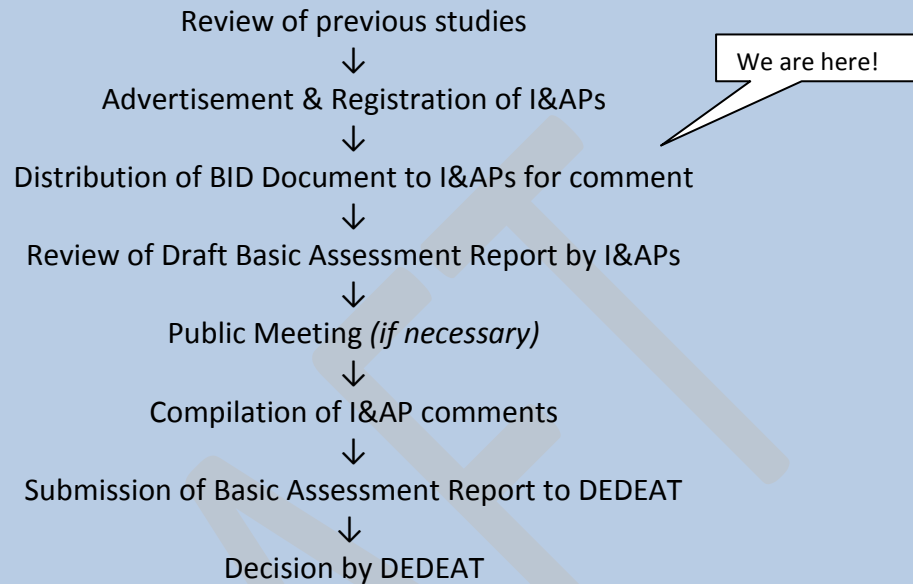
Table 1: Listed Activities which require Environmental Authorisation

ACTIVITY NUMBER	LISTED ACTIVITY
GN R 983 (19) i :	The infilling or depositing of any material of more than 5 cubic meters into, or the dredging, excavation, removing or moving of soil, sand, shells, shell grit, pebbles or rock of more than 5 cubic meters from a watercourse.
GN R 983 (10) i & ii :	The development and related operation of infrastructure exceeding 1000 metres in length for the bulk transportation of sewage, effluent, process water, waste water, return water, industrial discharge or slimes- (i) with an internal diameter of 0,36 metres or more; or with a peak throughput of 120 litres per second or more.

APPROACH TO BASIC ASSESSMENT REPORTS

The process required for the proposed project is a Basic Assessment. This process serves primarily to inform the public and relevant authorities about the proposed project and to determine any impacts.

Process for the Basic Assessments



POTENTIAL IMPACTS AND BENEFITS

EOH will investigate the receiving environment in order to assess the nature of potential impacts. Impacts to be considered include environmental failure and risks of the “no-go” alternative. In addition, impacts relating to the technology/locality will be assessed.

The following specialist studies will be conducted as part of the Basic Assessment:

- Heritage Impact Assessment
 - This study will identify any sensitive heritage and archaeological sites/artefacts and recommend possible mitigation.
- Aquatic Impact Assessment
 - This study will identify any sensitive aquatic ecosystems and recommend possible mitigation.

Potential benefits of the Sewerage Infrastructure:

- Proper treatment and transportation of sewage produced in and around Molteno.
- Unlocking the expansion and economic potential of the town of Molteno.

HOW CAN YOU BE INVOLVED?

A Public Participation Process (PPP) is being conducted as part of the environmental process. The aim of the PPP is to allow everyone who is interested in, or likely to be affected by the proposed development to provide input into the process.

The Public Participation Process will include:

- Advertisement in The Rep Newspaper
- Notice board (sign) on site
- Circulation of the BID (this document) to all identified I&APs and stakeholders
- Comments period
- Review of the report by all registered I&APs and stakeholders
- A public meeting/focus group meetings (*if necessary*)

If you consider yourself an interested and/or affected person/party, it is important that you become and remain involved in the PPP. Please follow the steps below in order to ensure that you are continually informed of the project developments and ensure your opportunity to raise issues and concerns pertaining to the project.

STEP 1: Please register by responding to our notification and invitation, with your name and contact details (details provided on cover page and below). As a registered I&AP you will be informed of all meetings, report reviews and project developments throughout the EIA process.

STEP 2: Review documents and reports.

EOH-CES is required to engage with all private and public parties that may be interested and/or affected by the proposed Sewerage Infrastructure development, in order to distribute information for review and comment in a transparent manner.

In the same light, it is important for I&APs to note the following:

1. In order for EOH-CES to continue engaging with you, please ENSURE that you register on our database by contacting the person below.
2. As the EIA process is regulated by specific review and comment timeframes, it is your responsibility to submit your comments within these timeframes.

Please send your enquiries and/or comments to:

Rosalie Evans
16 Tyrell Road,
Berea,
East London, 5241

P.O Box 8145,
Nahoon, East London, 5210

Tel: (043) 726 7809/8313

Fax: (043) 726 8352

Email: rosalie.evans@eoh.co.za



STORMBERGSPRUIT RIVER

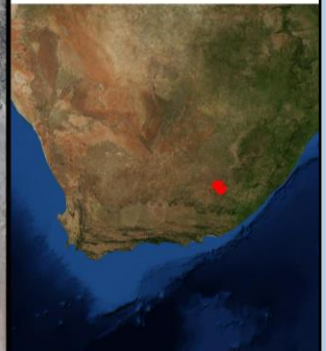
NOMONDE

MOLTENO SEWER & SEWAGE PUMP STATIONS

LOCALITY MAP

Legend

- Existing Pump Stations
- Proposed Development
- Stormbergsspruit River



1:9 000



DATUM: WGS84
 CREATED BY: RA EVANS
 CREATED ON: 05-06-2015



**I hereby wish to register as an Interested and Affected Party (I&AP) for the
Molteno Sewerage Infrastructure EIA process**

Name: _____

Organization: _____

Postal address: _____

Email: _____

Phone #: _____

Fax #: _____

My initial comments, issues or concerns are:

I would like to receive all future correspondence in: (please circle)

ENGLISH / XHOSA

Other individuals, stakeholders, organisations or entities that should be registered are:

Name: _____

Organisation: _____

Postal address: _____

Email: _____

Phone #: _____

Fax #: _____

Please return details to: **Rosalie Evans**: P.O. Box 8145, Nahoon, East London, 5210

Telephone: (043) 726 7809

Fax: (043) 726 8352

Email: rosalie.evans@eoh.co.za