

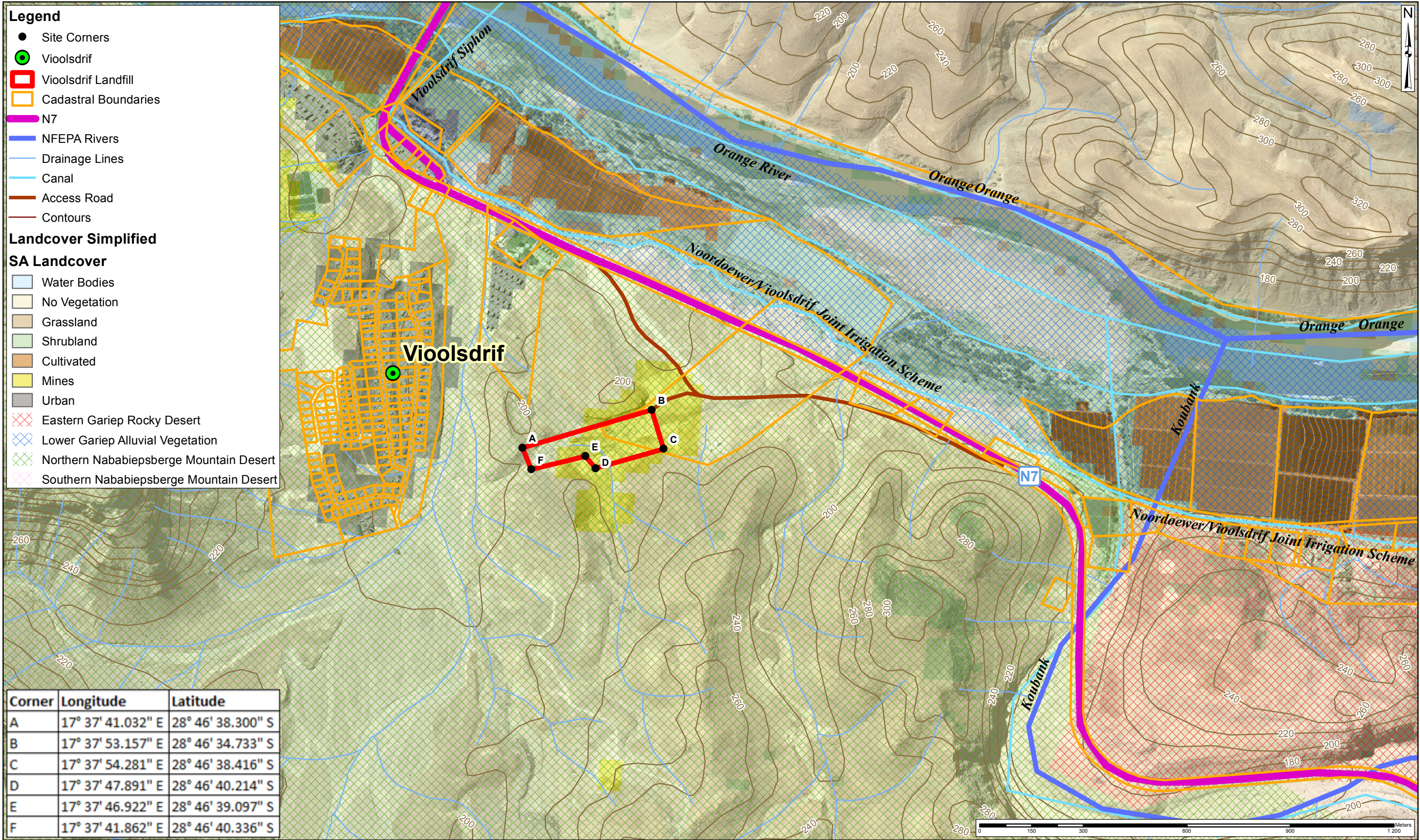
Legend

- Site Corners
- Violsdrif
- Violsdrif Landfill
- Cadastral Boundaries
- N7
- NFEPA Rivers
- Drainage Lines
- Canal
- Access Road
- Contours

Landcover Simplified

SA Landcover

- Water Bodies
- No Vegetation
- Grassland
- Shrubland
- Cultivated
- Mines
- Urban
- Eastern Gariep Rocky Desert
- Lower Gariep Alluvial Vegetation
- Northern Nababiepsberge Mountain Desert
- Southern Nababiepsberge Mountain Desert



Corner	Longitude	Latitude
A	17° 37' 41.032" E	28° 46' 38.300" S
B	17° 37' 53.157" E	28° 46' 34.733" S
C	17° 37' 54.281" E	28° 46' 38.416" S
D	17° 37' 47.891" E	28° 46' 40.214" S
E	17° 37' 46.922" E	28° 46' 39.097" S
F	17° 37' 41.862" E	28° 46' 40.336" S

Project Title: DEA Waste Licenses 2015	Scale: 1:10 000 <small>(When page size is: A3 landscape)</small>	Figure 2
Map Title: Site of Plan: Violsdrif Landfill	Projection: Geographic Datum: Hartebeesthoek 1994	Sources:
Whilst every care has been taken in compiling the information on this map, AECOM cannot accept responsibility for any inaccuracies.	Compiled By: P Dlamini GT 1904 GIS QC By: Approved By: P Mashau Date Saved: 2016/03/29 Project Number: 60437185 Map Ref: EnviroConsolidated_Violsdrif.mxd Revision: 00	
AECOM	© Copyright	Y:\7_Projects\60437185_DEA_Waste_Licenses_2015\mxd\SitePlans\EnviroConsolidated_Violsdrif.mxd