




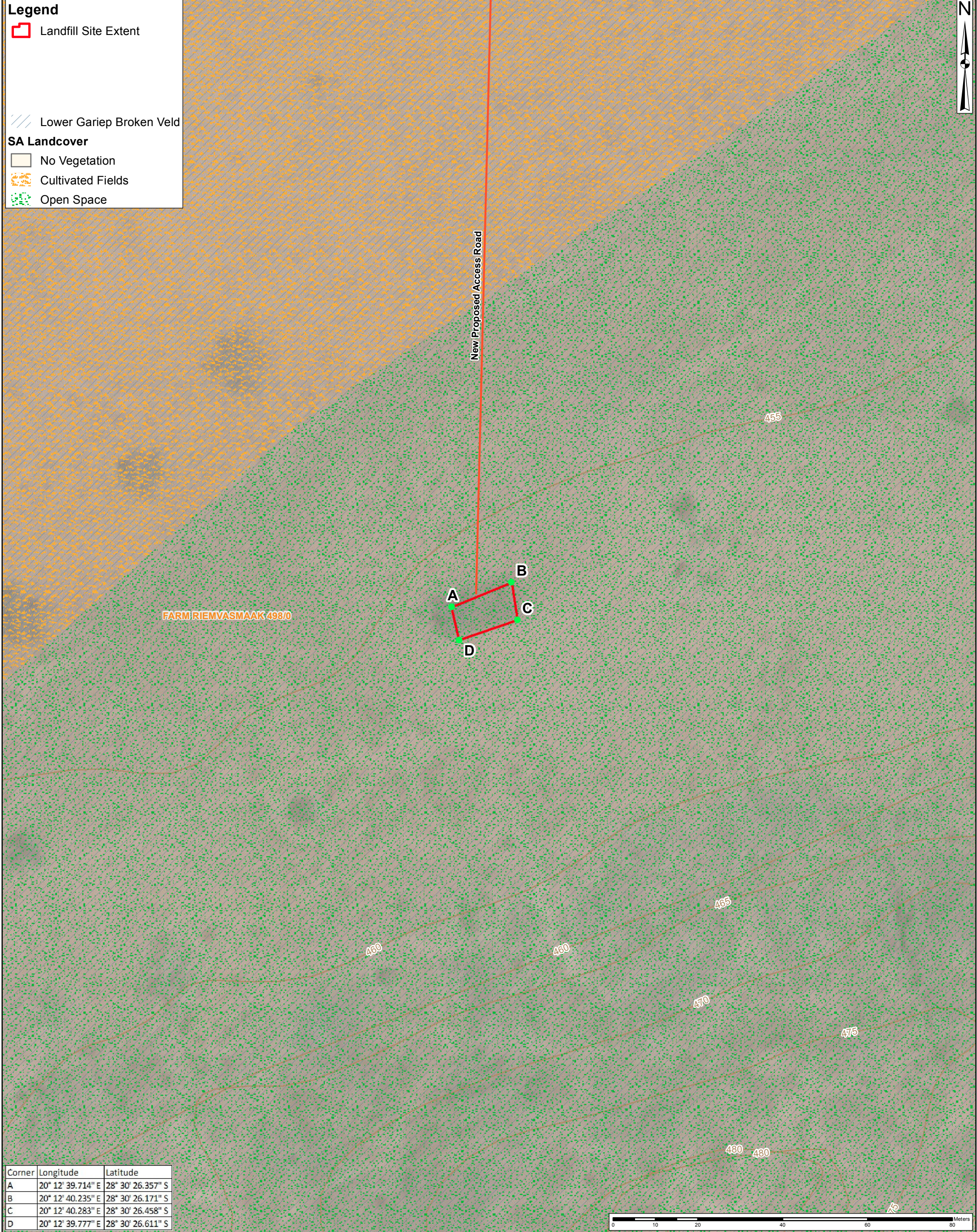
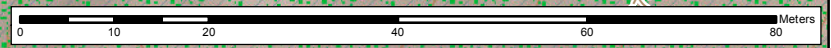



**Legend**

-  Landfill Site Extent
-  Lower Gariiep Broken Veld
- SA Landcover**
-  No Vegetation
-  Cultivated Fields
-  Open Space



Corner	Longitude	Latitude
A	20° 12' 39.714" E	28° 30' 26.357" S
B	20° 12' 40.235" E	28° 30' 26.171" S
C	20° 12' 40.283" E	28° 30' 26.458" S
D	20° 12' 39.777" E	28° 30' 26.611" S



<b>Project Title:</b>	<b>DEA Waste Licenses 2015</b>	<b>Scale 1:800</b> <small>(When page size is: A3 portrait)</small>	<b>Figure 2</b>
<b>Map Title:</b>	<b>Site Plan of Vredesvallei Landfill</b>	Projection: Transverse Mercator Datum: Hartebeesthoek 1994 Central Meridian: 21.0 Compiled By: GA Maree GIS QC By: TBD Approved By: J Hayes Date Saved: 2015/11/11 Project Number: 60437185 Map Ref: EnviroConsolidated.mxd Revision: 00	<small>CD:NGI          Source: Esri, DigitalGlobe, GeoEye, i-cubed, Earthstar Geographics, CNES/Airbus DS, USDA, USGS, AEX, Getmapping, Aerogrid, IGN, IGP, swisstopo, and the GIS User Community          © OpenStreetMap &amp; contributors          NFEPA, SANBI, 2011. Vegetation, SANBI 2012. CBA, SANBI BGIS.          Land Cover, GeoTerraImage (GTI) 2013.</small>
<small>Whilst every care has been taken in compiling the information on this map, AECOM cannot accept responsibility for any inaccuracies. © Copyright</small>		<small>DDP Ref.: 5 of 13</small>	
		<small>Y:\17_Projects\60437185_DEA_Waste_Licenses_2015\mxd\EnviroConsolidated.mxd</small>	