

## Sample 40



Image of OSL sample 40.



Sample location, Lupatana River, north bank

# Sample 41

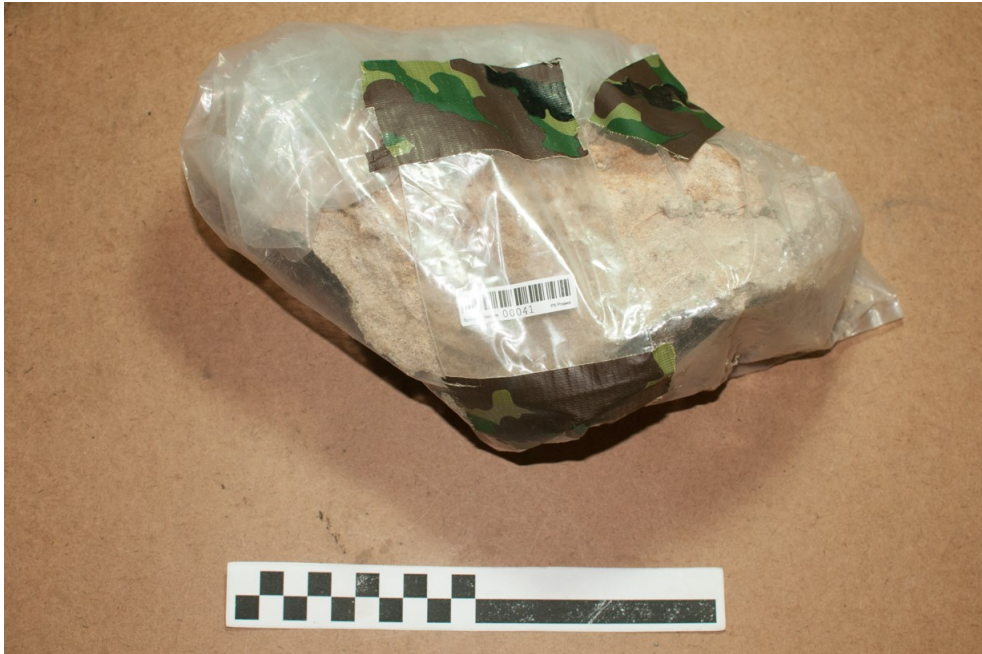


Image of OSL sample 41.



Sample location, Lupatana River, north bank dunes

## Sample 54

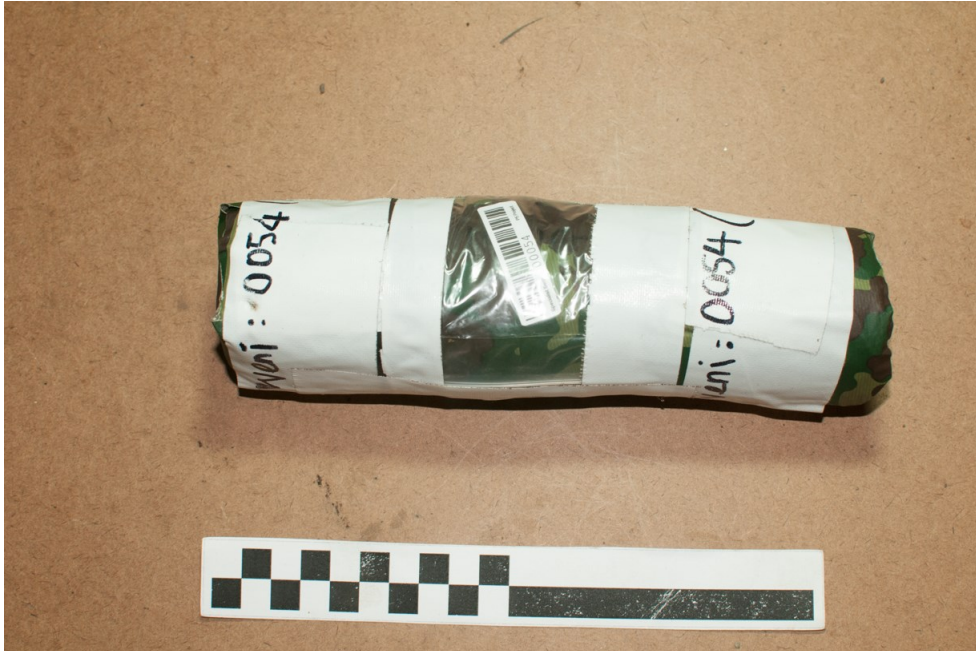


Image of OSL sample 54.



Sample location, Site A3NW-8, N685E681, strat unit MK14I.

# Sample 55



Image of OSL sample 55.

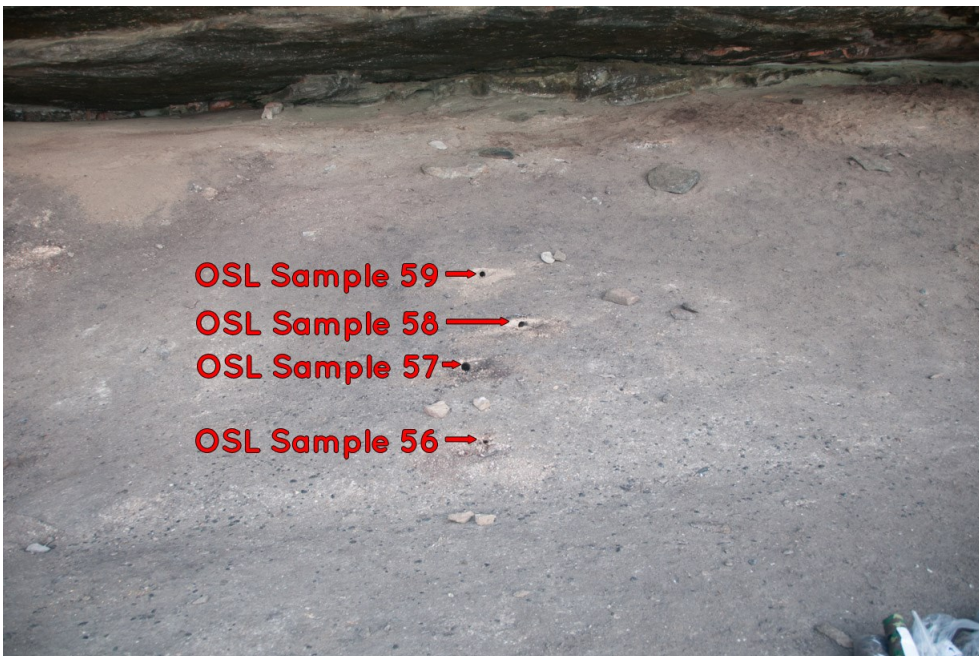


Sample location, Site A3NW-8, N685E681, strat unit MK14I.

# Sample 56



Image of OSL sample 56.

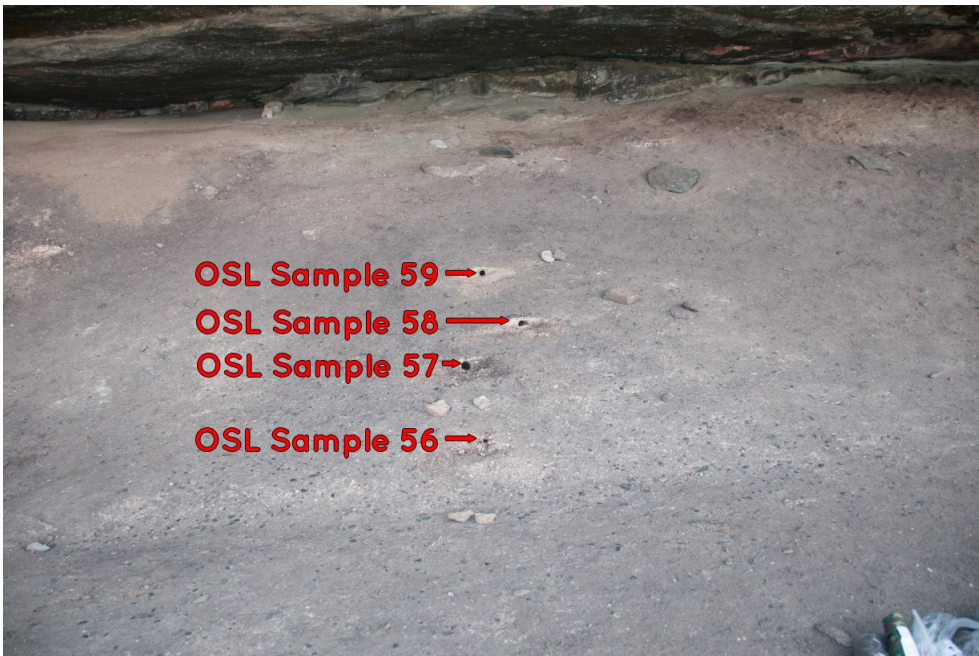


Sample location, Site A2SE-1, Stratum A

# Sample 57



Image of OSL sample 57.



Sample location, Site A2SE-1, Stratum B

# Sample 58



Image of OSL sample 58.

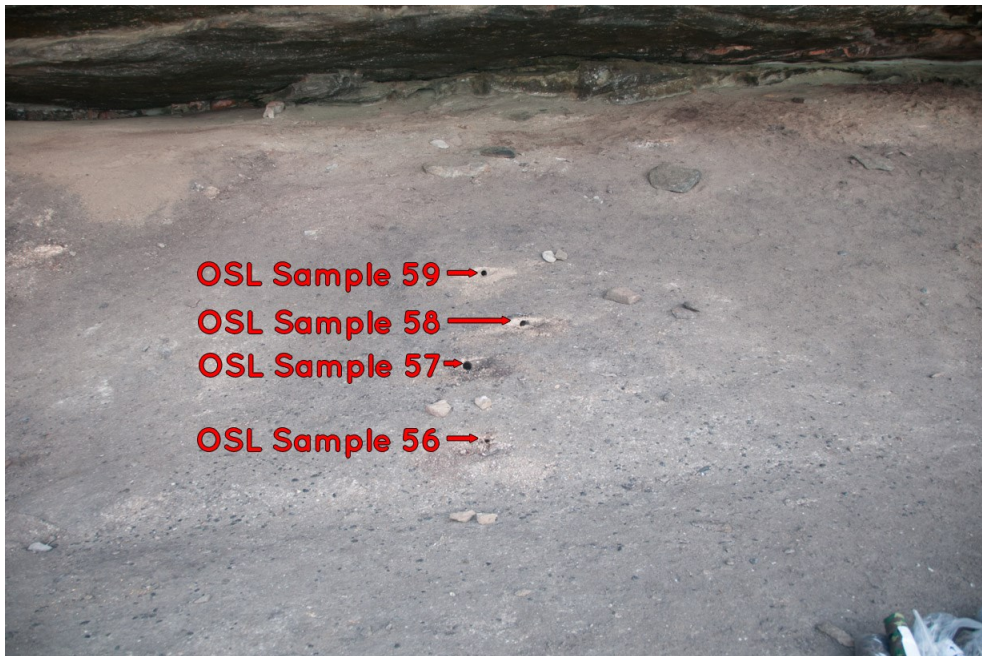


Sample location, Site A2SE-1, Stratum C

# Sample 59



Image of OSL sample 59.



Sample location, Site A2SE-1, Stratum D



## Sample 94



Image of OSL sample 94.



Sample location, Site C4NE-1, N337E838. Taken in south profile opposite skeletal remains in overlying sediments.

# Sample 102



Image of OSL sample 102.



Sample location, Site C4NE-1, N329E836. Taken in west profile.

# Sample 103



Image of OSL sample 103.



Sample location, Site C4NE-1, N329E836. Taken in west profile.

# Sample 104



Image of OSL sample 104.



Sample location, Site C4NE-1, N329E836. Taken in west profile.

## Sample 139

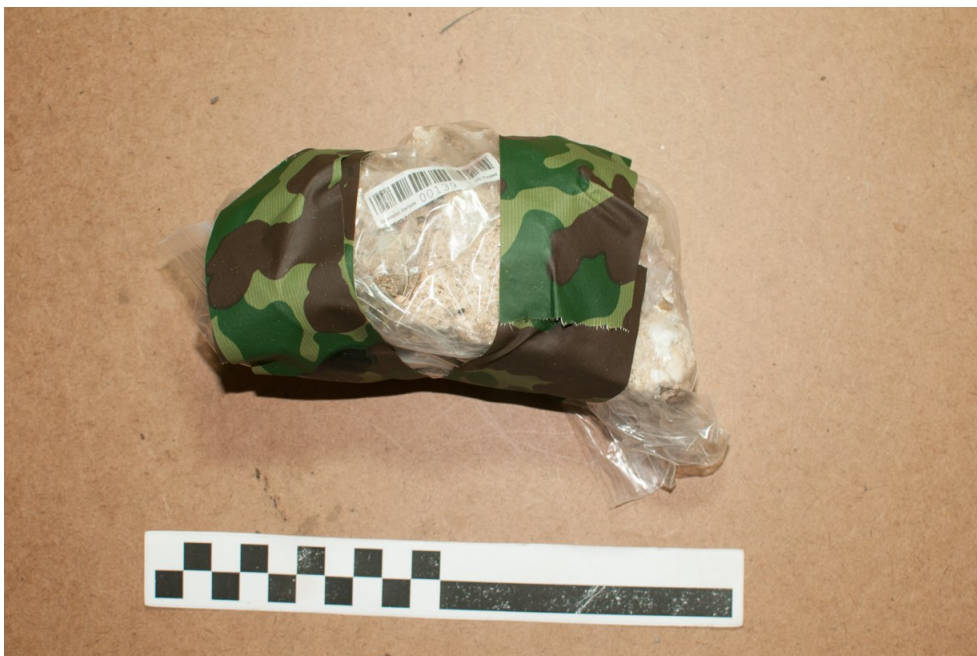


Image of OSL sample 139.

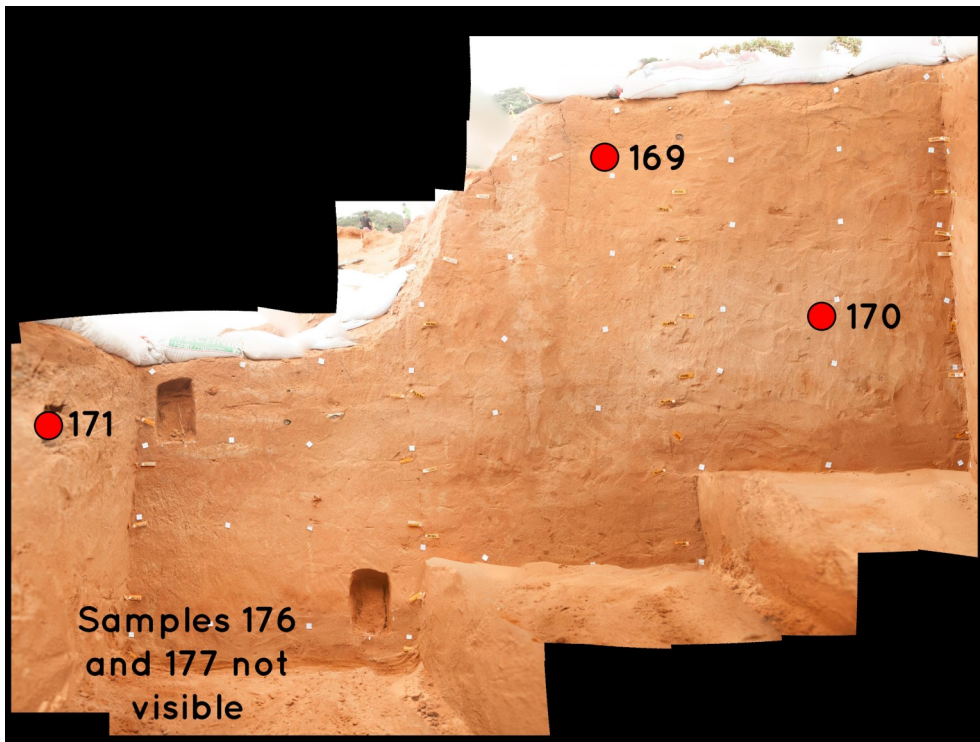


Sample location, North bank, Msikana River.

# Sample 169



Image of OSL sample 169.

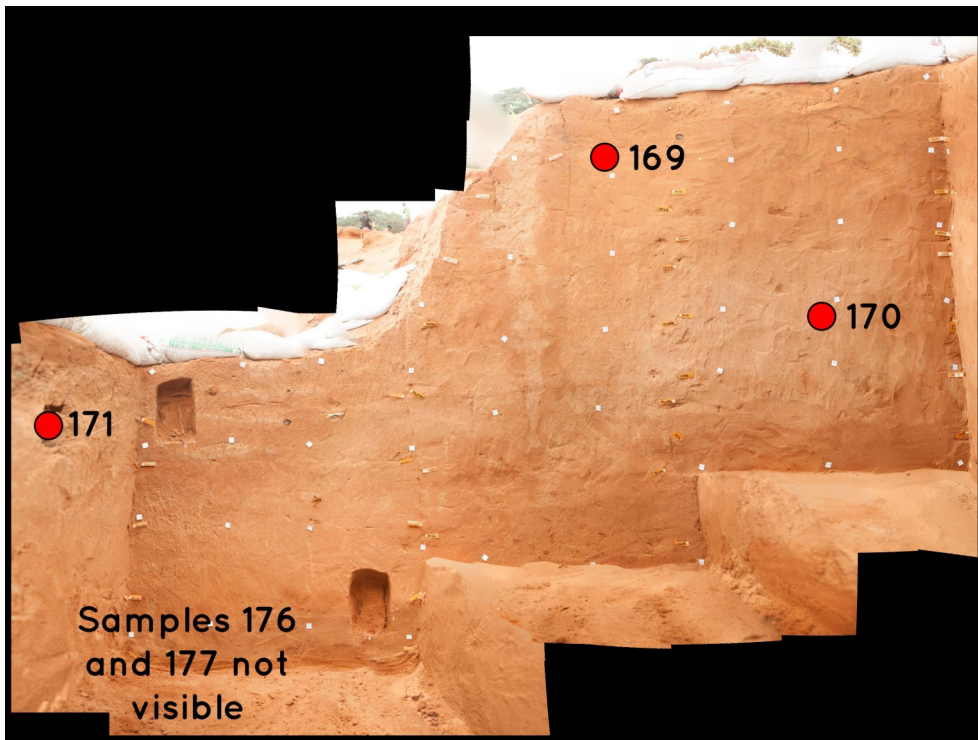


Sample location, e453 section from n603.25 to n606.25. micromorphology samples shown in image not being requested for export at this time.

## Sample 170



Image of OSL sample 170.

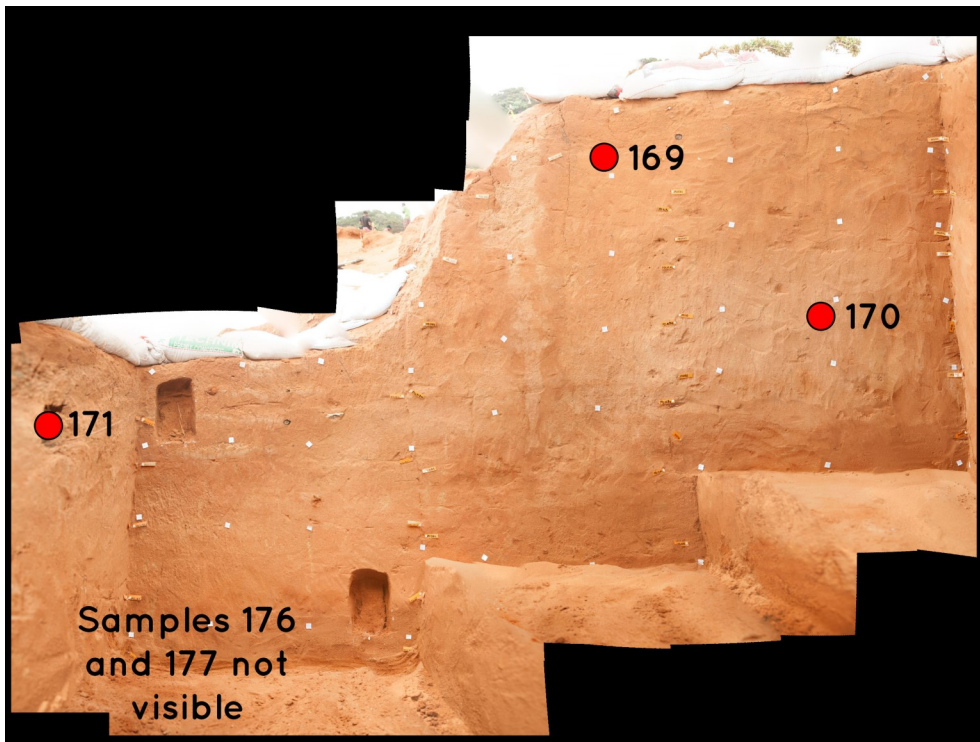


Sample location, e453 section from n603.25 to n606.25. micromorphology samples shown in image not being requested for export at this time.

# Sample 171



Image of OSL sample 171.



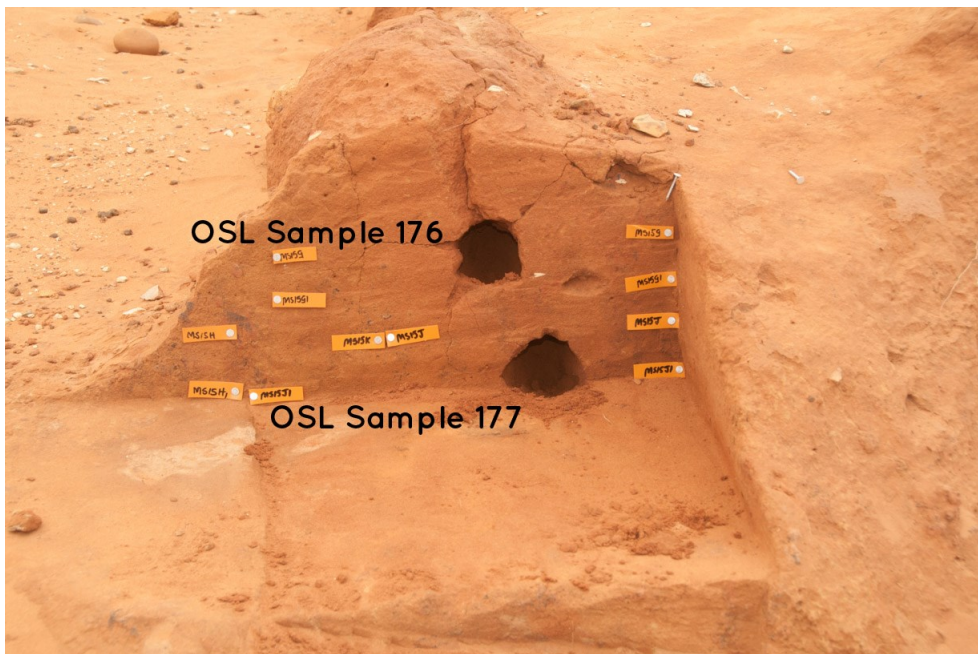
Sample location, e453 section from n603.25 to n606.25. micromorphology samples shown in image not being requested for export at this time.



# Sample 176



Image of OSL sample 176.

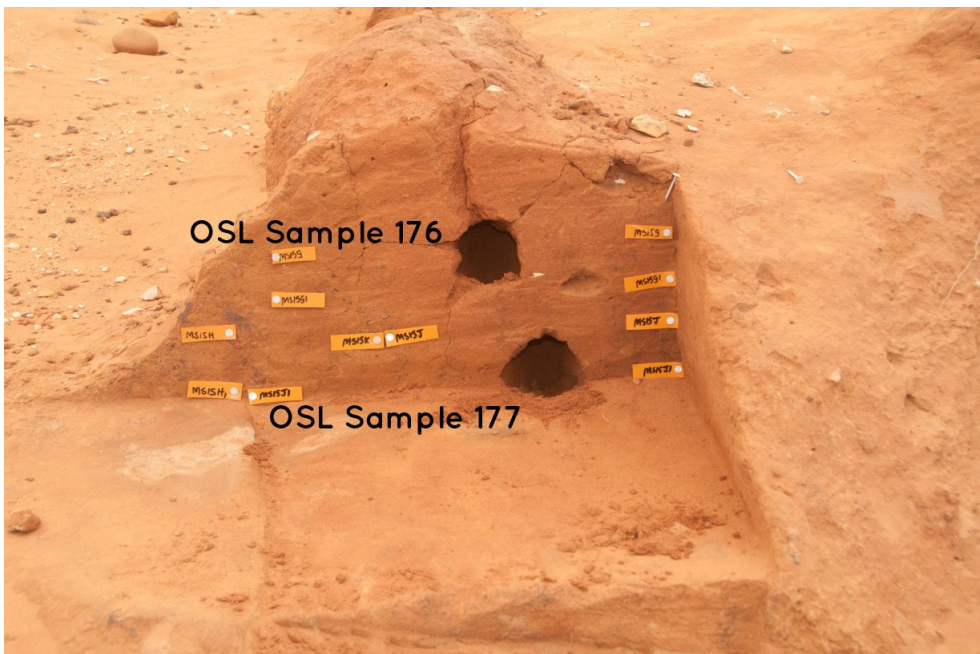


Sample location, n601 section from e442.75 to e443.25.

# Sample 177



Image of OSL sample 177.



Sample location, n601 section from e442.75 to e443.25.

## Sample 179



Image of OSL sample 179.

Sample location in dunes to the north of site B4NW-1. No sample location available.

## Pollen and Phytolith Samples, Site A2SE-1



Phytolith (left) and pollen (right) samples from excavation at site A2SE-1.  
Sample numbers are: 1-7; 10-11; 13, 15, 19, 182-190

# Pollen and Phytolith Samples, Site B4NW-1



Phytolith (top) and pollen (bottom) samples from excavation at site B4NW-1. Sample numbers are: 129-131; 133-137; 140-146; 148-157; 159; 162-165

# Pollen and Phytolith Samples, Site C4NE-1



Phytolith (left) and pollen (right) samples from excavation at site C4NE-1. Sample numbers are: 60-68; 70-73; 76; 93; 81; 95-98.

## Pollen and Phytolith Samples, Site A3NW-8



Phytolith (left) and pollen (right) samples from excavations at site A3NW-8. Sample numbers are: 42-52.

# Pollen and Phytolith Samples, Landscape Transect 1



Phytolith (left) and pollen (right) samples from landscape transect #1. The transect was located from the coastline to inland along the north bank of the Lupatana River. Sample numbers are: 22-29.



# Pollen and Phytolith Samples, Landscape Transect 2



Phytolith (top) and pollen (bottom) samples from landscape transect #2. The transect was located from the coastline to inland along the south bank of the Lupatana River.

## Pollen and Phytolith Samples, Landscape Transect 3



Phytolith (top) and pollen (bottom) samples from landscape transect #3. The transect was located south of the Lupatana River. Sample numbers are: 105-112.

# Pollen and Phytolith Samples, Landscape Transect 4



Phytolith (top) and pollen (bottom) samples from landscape transect #4. The transect was in the Mkambati Nature Reserve near to the Mtentu River. Sample numbers are: 113-118.

# Pollen and Phytolith Samples, Landscape Transect 5



Phytolith (top) and pollen (bottom) samples from landscape transect #5. The transect was in the Mkambati Nature Reserve from the coast to inland along the south bank of the Mntentu River. Sample numbers are: 120-128; 181.

## Radiocarbon Sample 501



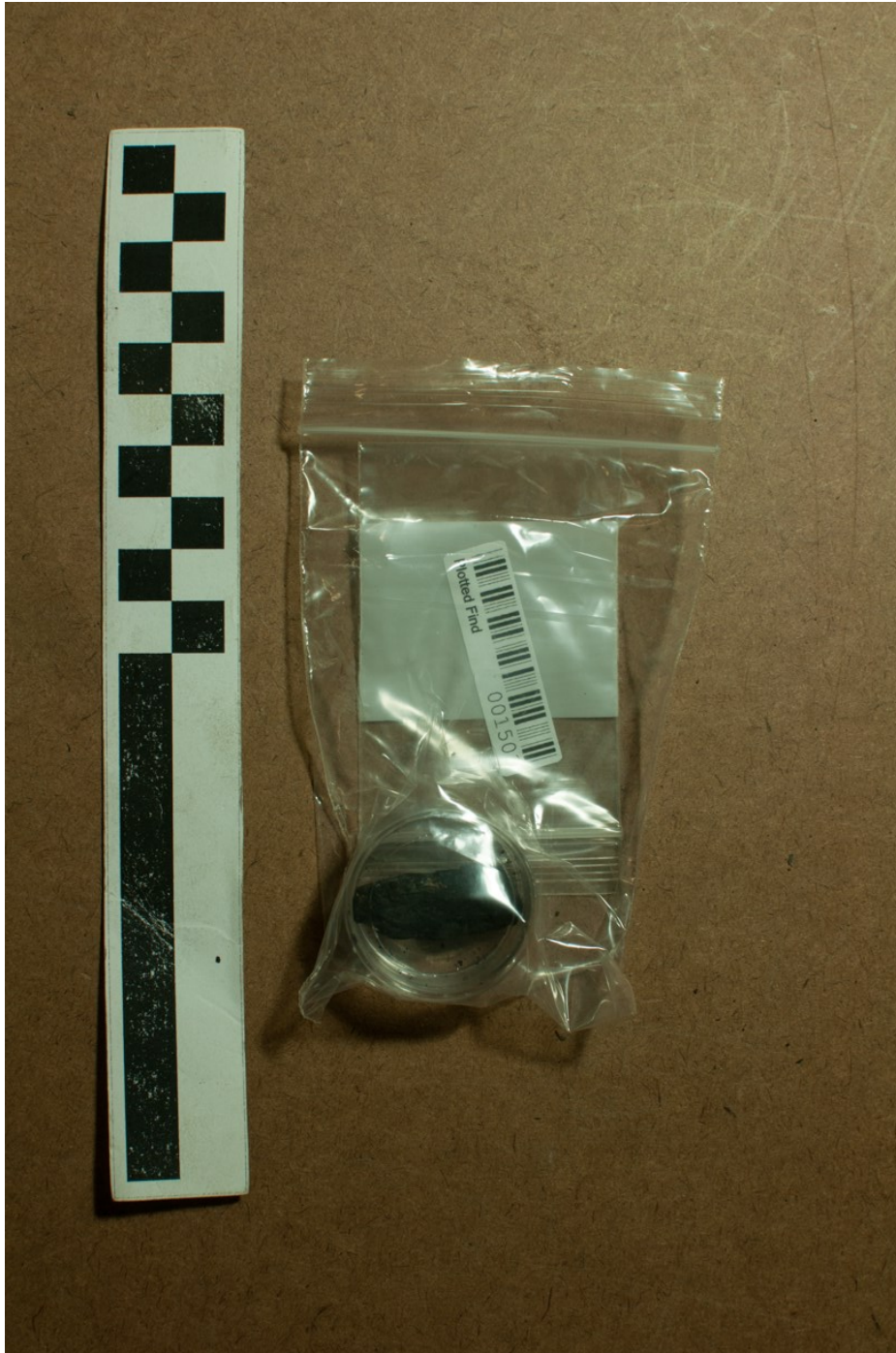
Radiocarbon sample 501 is a 1g piece of charcoal recovered in excavation square N934E013NE, strat unit WB15K at site A2SE1.

## Radiocarbon Sample 1502



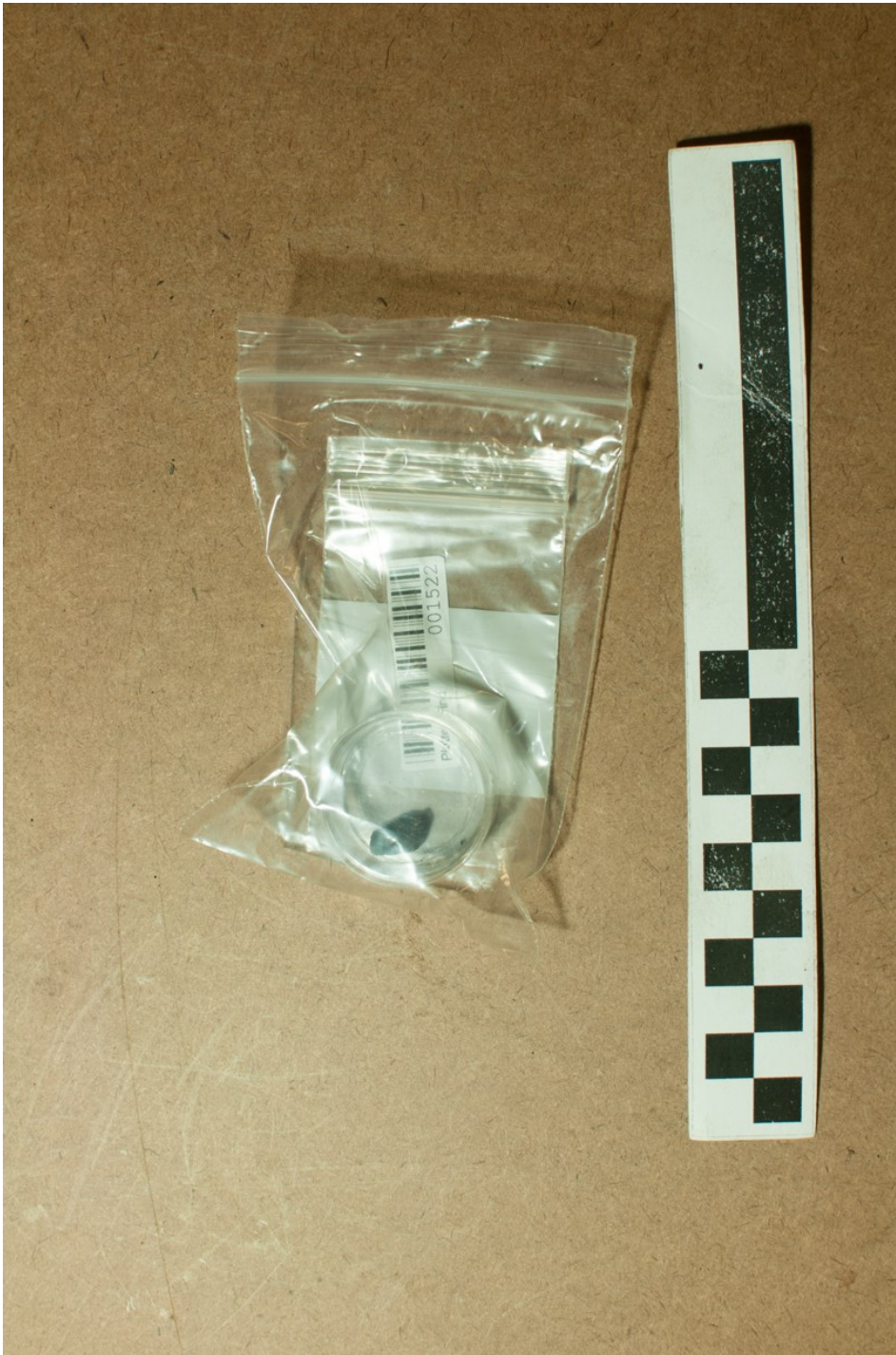
Radiocarbon sample 1502 is a 0.5g piece of charcoal recovered in excavation square N924E028NE, strat unit WB15F at site A2SE1.

## Radiocarbon Sample 1503



Radiocarbon sample 1503 is a 0.5g piece of charcoal recovered in excavation square N934E013NE, strat unit WB15G at site A2SE1.

## Radiocarbon Sample 1522



Radiocarbon sample 1522 is a 0.2g piece of charcoal recovered in excavation square N924E028NE, strat unit WB15J at site A2SE1.



## Radiocarbon Sample 1539



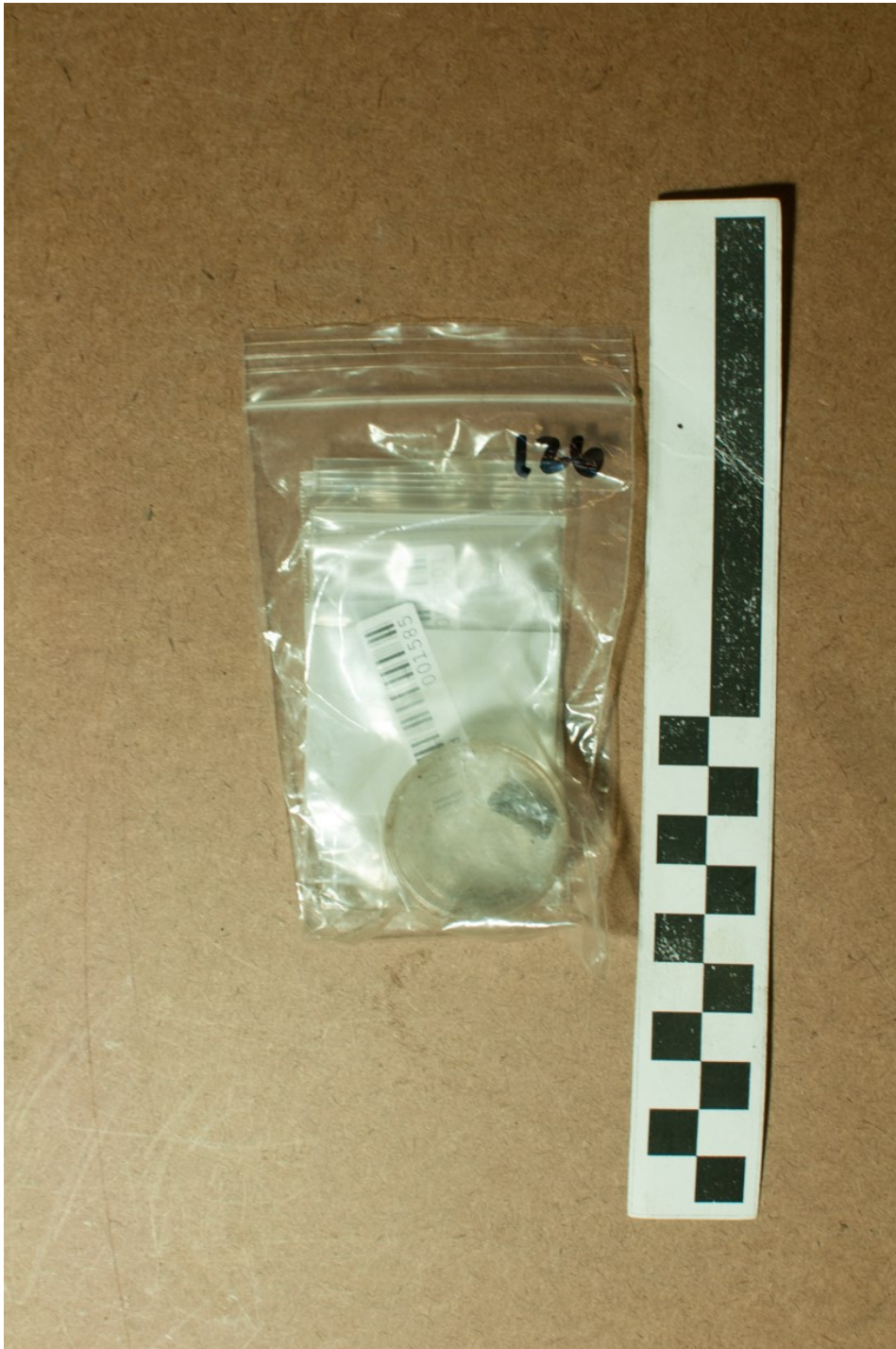
Radiocarbon sample 1539 is a 0.6g piece of charcoal recovered in excavation square N924E028NE, strat unit WB15P at site A2SE1.

## Radiocarbon Sample 1584



Radiocarbon sample 1584 is a 1g piece of charcoal recovered in excavation square N924E028NE, strat unit WB15U at site A2SE1.

## Radiocarbon Sample 1585



Radiocarbon sample 1585 is a 0.5g piece of charcoal recovered in excavation square N934E013NE, strat unit WB15W at site A2SE1.

## Radiocarbon Sample 1587



Radiocarbon sample 1587 is a 0.2g piece of charcoal recovered in excavation square N934E013NE, strat unit WB15W at site A2SE1.

## Radiocarbon Sample 1589



Radiocarbon sample 1589 is a 2g piece of animal dung recovered in excavation square N329E836NE, strat unit FF15M at site C4NE-1.

## Radiocarbon Sample 1590



Radiocarbon sample 1590 is a 0.5g piece of animal dung recovered in excavation square N329E836NE, strat unit FF15E at site C4NE1.