

**NOTICE OF PART 2 ENVIRONMENTAL AUTHORISATION AMENDMENT APPLICATION:  
75 MW HUMANSRUS PHOTOVOLTAIC (PV) 1 SOLAR POWER FACILITY  
(DFFE REFERENCE NUMBER: 2022-09-0038)**

This notice board serves to inform you, as a potential Interested and Affected Party (I&AP), of the application for a Part 2 Environmental Authorisation (EA) Amendment for the 75 MW Humansrus Photovoltaic (PV) 1 Solar Power Facility (referred to as Lesedi Power Company). The Part 2 EA Amendment application has been lodged with the Department of Forestry, Fisheries and the Environment (DFFE) (the Competent Authority) in terms of the National Environmental Management Act (NEMA), 1998 (Act No. 107 of 1998), as amended, and the Environmental Impact Assessment (EIA) Regulations, 2014 (Regulations in terms of sections 24(5) and 44 of the NEMA, 1998), as amended on 7 April 2017 and 11 June 2021. For this EA Amendment application, a Part 2 EA Amendment process will be conducted as there has been a change in scope of the EA for the Lesedi Power Company. The Applicant, Lesedi Power Company (Pty) Ltd., has appointed EARTHnSKY Environmental (Pty) Ltd. as the independent Environmental Assessment Practitioner (EAP) to facilitate the application process. The EAP shall at all times adhere to the requirements on the Protection of Personal Information Act, 2013 (Act No. 14 of 2013) (POPIA).

**PROJECT DESCRIPTION**

The existing Lesedi Solar Power Facility is located 4 km southeast of the Groenwater settlement and 30 km east of Postmasburg in the Northern Cape. Construction of the Lesedi Solar Power Facility commenced in November 2012, within the EA validity period (August 2011 to August 2014) and is currently operational. Full operations of the Lesedi Solar Power Facility commenced on 21 May 2014 and the facility is expected to have an operational lifespan of around 25 years. The Applicant, is applying for various amendments to its existing EA (12/12/20/1903/1, dated 23 February 2012) issued for the 75 MW Humansrus Photovoltaic (PV) 1 Solar Power Facility (referred to as Lesedi Power Project):

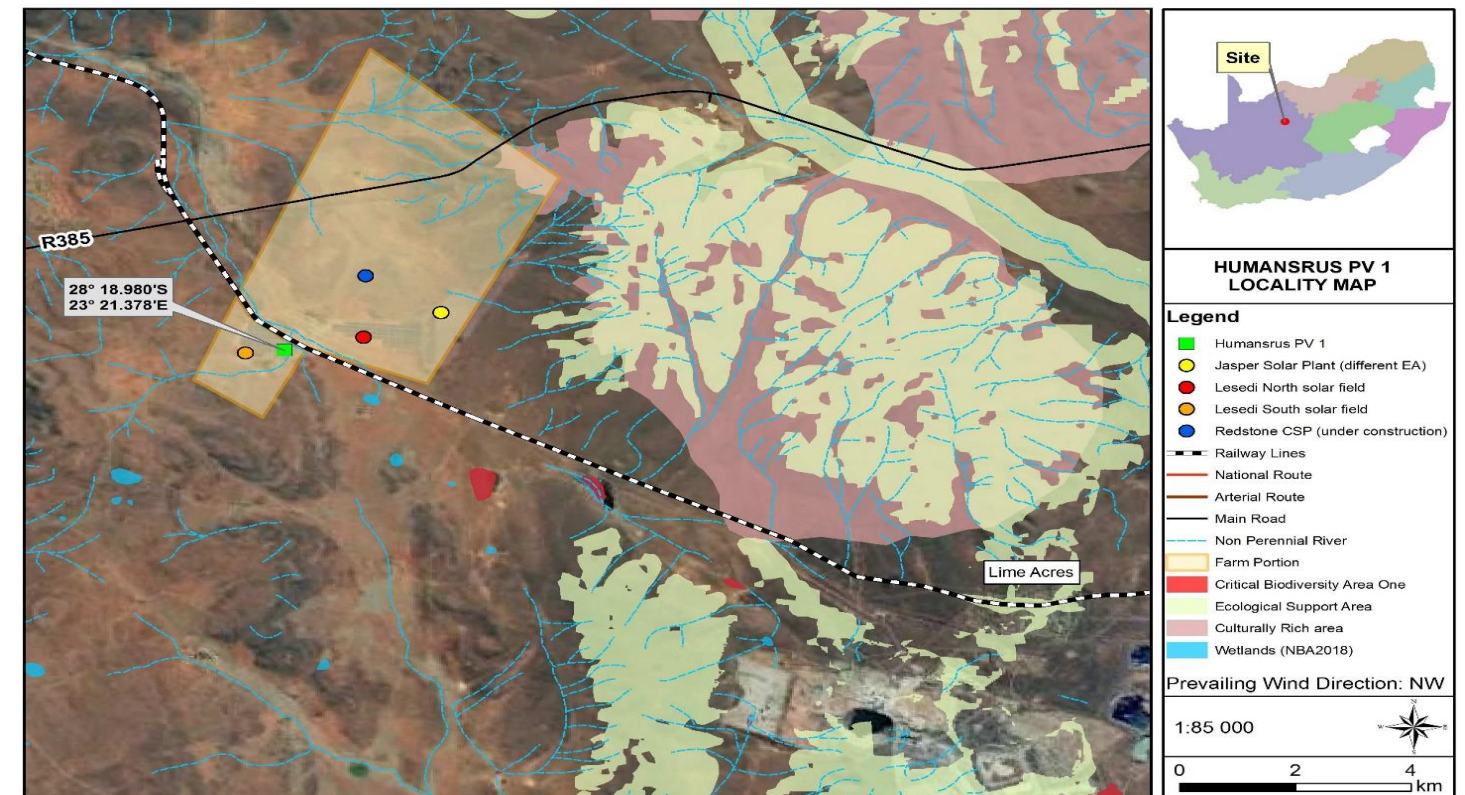
1. Confirmation of the change of the contact person for Oakleaf Investment Holdings 79 (RF) (Pty) Ltd. (Trading as Lesedi Power Company (Pty) Ltd.);
2. To amend the size and location of the substation, and indicate that the substation area comprises a control room, external 132kV transformers, electric switchgear, capacitor banks and is fenced for security and safety;
3. To indicate the location of the Operations and Maintenance (O&M) buildings, and to show this consists of an office and storage buildings, security, ablution facilities, parking, outdoor store and water treatment facility;
4. To include the aboveground 22kV powerlines between northern solar field and substation – across railway line and D3381 road;
5. Removal of the 200m and 50m visual buffers for the aboveground 22kV powerlines;
6. To show the PV arrays of up to 1km in length across the south solar field and up to 1,5km in length across the north solar field, made up of approximately 100m sections;
7. To accommodate the temporary storage of up to 300 waste solar PV modules on site, in compliance with the 2013 Norms and Standards for the Storage of Waste (NEM:WA 59 of 2008);
8. To align the authorised development footprint with the farm boundary, to accommodate the overburden stockpile, and to indicate that a small borrow pit on site was not needed during the construction phase, as excess overburden was used for filling;
9. To indicate that the solar irradiation measuring panel was in place during the feasibility stage, to collect data on the solar resource which information the layout of the facility, but is not permanent, and was removed prior to the commencement of operations;
10. To include three autonomous weather stations (AWS), approx. 4m in height for the continuous monitoring of local conditions during the operational phased, and three soiling stations, measuring approximately 4m<sup>2</sup> in size each, to monitor and determine operational efficiencies; and
11. Approval of the as-built drawings and layout plans for the entire operation.

**PROJECT LOCATION**

- Project property and location: Remainder of Farm 469, Hay RD.
- Project site GPS coordinates: 28°18'58.80"S; 23°21'22.68"E.
- The project falls within the municipal boundaries of the Tsantsabane Local Municipality and the ZF Mgcawu District Municipality, Northern Cape Province.

**PUBLIC PARTICIPATION**

The public participation processes for this application are conducted according to the requirements of Chapter 6 of the EIA Regulations of 4 December 2014, as amended. Should you wish to register as an I&AP for the amendment application, and subsequently be kept informed of the progress of the project, please request and complete an "Interested and Affected Party" registration form (obtainable from the EAP). If you do not receive a confirmation of registration, kindly please confirm that we have received your registration form. Alternatively, you may also submit your name, contact information and interest in the matter, in writing, to the EAP using the contact details given below (**before 28 June 2023**). The draft Environmental Impact Report (EIR) and Operational Environmental Management Plan (OEMP) will be available for public review and commenting for a period of 30 days: **19 May 2023 to 28 June 2023**. Hardcopies of the Draft EIR, OEMP and supporting documentation will be available for review at: Lesedi Solar Facility (the Site) and the Postmasburg Library: 13 Springbok Street, Postmasburg from **25 May 2023**. Electronic copies of the report will be provided to registered I&APs via email or other means, as relevant. Please inform us should you require a copy of the report. The reports are also available for download using the following link: <https://www.dropbox.com/sh/ey7b9gtcajyw6yi/AACbmW-VaquX0SIVFrk2-k6Wa?dl=0>. A public meeting will be held at the Refenste Primary School: Groenwater, Postmasburg on **13 June 2023 at 17:00-19:00**. **Comments on the draft EIR and Operational OEMP can be submitted to the EAP at the contact details below, by 28 June 2023**. EARTHnSKY Environmental (Pty) Ltd. Lizette Kloppers: Tel and WhatsApp: 061 524 2211; Email: [lizette@earthnsky.co.za](mailto:lizette@earthnsky.co.za) / [lizette.earthnsky@gmail.com](mailto:lizette.earthnsky@gmail.com); Fax to Email: 086 552 6837.



**KITSISO YA KAROLO 2 YA KOPO YA PHETOLO YA THEBOLELO YA GO DIRA TIRO MO TIKOLOGONG:  
75 MW HUMANSRUS PHOTOVOLTAIC (PV) LEFELO LE LE 1 LA MOTLAKASE WA SOLAR  
(DFFE NOMORO YA REFERENSE YA: 2022-09-0038)**

Kitsiso e e mo lebatling leno la dikitsiso ke ya go itsise wena, jaaka yo go ka diragalang gore o nne Motho yo o Nang le Kgatlhego le yo o Amegang (*Interested and Affected Party [I&AP]*) ka kopo ya Karolo 2 ya Phetolo ya Thebolelo ya go Dira Tiro mo Tikologong (*Environmental Authorisation [EA]*) ya 75 MW Humansrus Photovoltaic (PV) 1 Solar Power Facility (e e bidiwang Lesedi Power Company). Kopo eno e neilwe Lefapha la Dikgwa, Tshwaro ya Ditlhapi le (*Department of Forestry, Fisheries and the Environment [DFFE]*) (Bolaodi jo Gaisanang) go ya ka Molao wa Naga wa Taolo ya Tikologo (*National Environmental Management Act [NEMA]*), 1998, o o fetotsweng, le Melawana ya Tshakatsheko ya go Amega ga Tikologo (*Environmental Impact Assessment [EIA]*), 2014, (Melawana go ya ka dikarolo (25(5) le 44 tsa NEMA, 1998), e e fetotsweng ka 7 Moranang 2017 le 1 Seetebosigo 2017. Mabapi le kopo eno ya Phetolo ya EA, tiro ya Phetolo ya Karolo 2 ya EA e tlele go dirwa ka jaana go nnile le phetogo mo tirong yotlhe ya EA ya Lesedi Power Company Mokopi, ebong Lesedi Power Company (Pty) Ltd., e tlhomile EARTHnSKY Environmental (Pty) Ltd jaaka Basekaseki ba Tikologo ba ba ikemetseng ka nosi (*Environmental Assessment Practitioner [EAP]*) go rulaganyetsa tiro ya kopo eno Ka dinako tsotlhe EAP e tla dira tumalanong le tse di batliwang ke mo Molaong wa Tshireletso ya Tshedimosetso ka ga Motho (*Protection of Personal Information Act, 2013 [Molao No. 14 wa 2013]*) (POPIA).

**TLHALOSO YA POROJEKE**

Lesedi Solar Power Facility e e leng teng mo nakong eno e 4 km kwa borwa bothaba jwa matlo a Groenwater le 30 km kwa bothaba jwa Postmasburg kwa Kapa Bokone. Go agiwa ga Lesedi Solar Power Facility go simolotse ka Ngwanatsele 2012, mo nakong e EA e neng e dirisiwa (Phatwe 2011 go ya go Phatwe 2014) mme e santse e dirisiwa le mo nakong eno. Ditiro tsotlhe tsa Lesedi Solar Power Facility di simolotse ka 21 Motsheganong 2014 mme go solofetswe gore lefelo leo le kgone go dirisiwa dingwaga di ka nna 25. Mokopi, o dira kopo ya diphetogo tse di farologaneng mo EA ya yone e e ntseng e le teng (12/12/20/1903/1, ya letlha la 23 Tlhakole 2012) e e ntsheditsweng 75 MW Humansrus Photovoltaic (PV) 1 Solar Power Facility (e e bidiwang Lesedi Power Project):

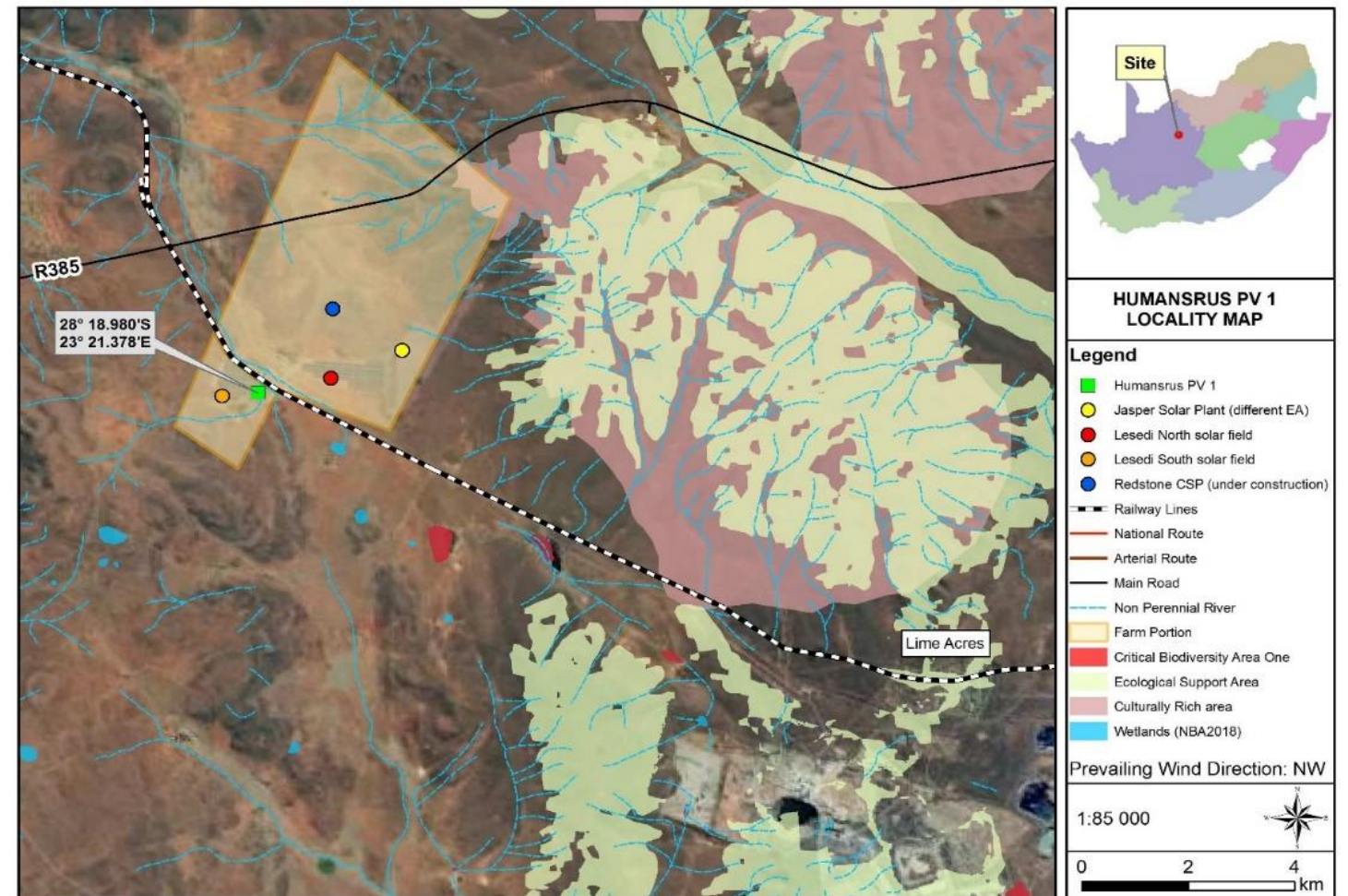
1. Tlhomamiso ya motho o sele yo go tshwanetseng ga ikgolaganngwa le ene wa Oakleaf Investment Holdings 79 (RF) (Pty) Ltd. (E e Dirang kgwebo ka leina la Lesedi Power Company (Pty) Ltd.);
2. Go fetola bogolo le lefelo la seteishene se sebotlana, le go bontsha gore lefelo la seteishene se sebotlana le na le phaposi ya taolo, diteranefoma tse di ka kwantle tsa 132kV, switchgear ya motlakase, dipolokelo tsa capacitor le gore e terateletswe gore e sirelediwe le go babalelwa.
3. Gore o bontshe fa dikago tsa Operations and Maintenance (O&M) di leng teng, le go bontsha gore di na le ofisi le dikago tsa bobolokelo, tshireletsego, le matlwana a boithusetso, bopakelo jwa dikoloi, lefelo le le ka kwantle la bobolokelo le lefelo la go phepafatsa metsi.
4. Go akaretsa megala ya motlakase e e tsamayang kwa godimo ya 22kV gareng ga lefelo la solar e e kwa bokone le seteishene se sebotlana - go kgabaganya seporo sa terena le tsela ya D3381;
5. Go tloswa ga karolo e e bonalang ya 200m le ya 50m ya megala ya motlakase e e tsamayang kwa godimo ya 22kV.
6. Go bontsha marang a PV a bolelele jwa go fitlha go 1km go kgabaganya lefelo la solar le le kwa borwa le go fitlha go 1.5 km go kgabaganya lefelo la solar le le kwa bokone, se e leng dikarolo tsa 100m fa go fopholediwa;
7. Gore lefelo leno le kgone go tsenya bobolokelo jwa nakwana jwa dimojule tsa PV tsa dilatliwa tsa solar tse di fitlhang go 300 mo saeteng, tumalanong le 2013 Norms and Standards tsa Bobolokelo jwa Dilatliwa (Molao wa NEM:WA No. 59 wa 2008);
8. Go tsamaisanya lefelo le le reboletsweng la kago eno le molelwane wa polasi, gore go kgone go nna le lefelo la bobolokelo jwa dilatliwa, le go bontsha gore mosimanyana o o epelwang go thiba o mongwe o ne o sa tlhokege mo saeteng ka nako ya kago, ka gonne go ne ga dirisiwa dilatliwa go thiba;
9. Go bontsha gore go ne go na le phanele ya go lekanya go tsena ga marang a motlakase wa solar ka nako ya tshakatsheko ya go kgonega, go tsaya tshedimosetso ka sedirisiwa sa solar se se nayang tshedimosetso ka thulaganyo ya lefelo, mme e se ya nako yotlhe, le gore e ne ya tloswa pele ga ditiro di simololwa;
10. Go akaretsa diteishene tsa maemo a bosa tse di itirisang (autonomous weather stations [AWS]), mo e ka nngang 4m go ya kwa godimo gore maemo a lefelo leo a nne a tlhokometswe ka metlha ka nako ya tiro e e feditsweng, le diteishene tse tharo tse di tshwanetseng go phepafadiwa, tsa bogolo jo bo fopholediwang go nna 4m<sup>2</sup> nngwe le nngwe ya tsone, go tlhokomela le go lemoga fa tiro e sa dirwe sentle; le
11. Tumelelo ya diteroiwa tsa go bapisa thulaganyo ya tiro le go dirwa ga yone le dipolane tsa lefelo la tiro yotlhe.

**LEFELO LA POROJEKE**

Naga le lefelo la porojeke: Karolo e e setseng ya Polasi 469, Hay RD. Dipalo tsa GPS tsa kwa lefelo la porojeke le leng teng: 28°18'58.80"S; 23°21'22.68"E. Porojeke eno e mo teng ga melelwane ya mmasepala ya Mmasepala wa Selegae wa Tsantsabane le Mmasepala wa Kgaolo wa ZF Mgcawu, Porofense ya Kapa Bokone.

**GO TSAYA KAROLO GA MORAFE**

Tiro ya go tsaya karolo ga morafe ya kopo eno e dirwa go ya ka tse di batliwang mo go Kgaolo 6 ya Melawana ya EIA ya Sedimonthole 2014, e e fetotsweng. Fa o ka batla go ikwadisa jaaka I&AP mabapi le kopo ya phetolo, le gore morago o nne o itsisiwe mabapi le kafa porojeke e tseletseng ka teng, tsweetswee kopa o bo o tlatse foromo ya go ikwadisa jaaka "Motho yo o Nang le Katlhego le yo o Amegang (e e ka bonwang mo go EAP). Fa e le gore ga wa amogela tlhomamiso ya gore o ikwadisitse, tsweetswee dira gore o tlhomamise gore re amogetse foromo ya gago ya go ikwadisa. Ntle le moo, o ka romela le leina la gago, tshedimosetso ya go ikgolaganya le wena le kgatlhego ya gago mo kgannyeng eno, ka go kwalela, EAP o dirisa dintlha tsa go ikgolaganya le ene tse di newang fa tlase (pele ga **28 Seetebosigo 2023**). Terafote ya Pego ya go Amega ga Tikologo (*Environmental Impact Report [EIR]*) le *Operational Environmental Management Plan (OEMP)* e tla bo le teng gore e sekasekiwe ke botlhe le go tshwaela mo go yone mo malatsing a le 30: **Motsheganong 19, 2023 go ya go Seetebosigo 28, 2023**. Dipampiri tsa Terafote ya EIR, OEMP le ditokumente tse di tshetsang di tlele go nna teng go ka sekasekiwa kwa: Lesedi Solar Facility (Lefelo) le kwa Postmasburg Library: 13 Springbok Street, Postmasburg - go tswa **Motsheganong 25, 2023**. Dikhopi tsa mo khomphiutheng tsa pego eno di tla newa bo-I&AP ba ba kwadisitsweng ka imeile kgotsa ka ditsela tse dingwe, fa go tshwanela. Tsweetswee re itsise fa e le gore o batla khopi ya pego eno. Gape dipego di teng go ka laisololwa go dirisiwa linki e e latelang: <https://www.dropbox.com/sh/ey7b9gtcajy6yi/AACbmW-VaquXOSIVFrk2-k6Wa?dl=0>. Go tlele go tshwarwa phuthego ya botlhe kwa Refentse Primary School: Groenwater, Postmasburg ka **13 Seetebosigo 2023 ka 17:00-19:00. Ditshwaelo tsa terafote ya EIR le Operational OEMP di ka romelwa EAP kwa dintlheng tsa go ikgolaganya le bone tse di fa tlase, ka 28 Seetebosigo 2023** EARTHnSKY Environmental (Pty) Ltd. Lizette Kloppers: Mogala le WhatsApp: 061 524 2211; Imeile: [lizette@earthnsky.co.za](mailto:lizette@earthnsky.co.za) / [lizette.earthnsky@gmail.com](mailto:lizette.earthnsky@gmail.com); Romela Fekese kwa Imeileng ya: 086 552 6837.



**KENNISGEWING VAN 'N DEEL 2 OMGEWINGSMAGTIGING WYSIGINGS AANSOEK:  
75 MW HUMANSRUS FOTOVOLTAÏESE SONKRAG-FASILITEIT  
(DEPARTEMENTELE VERWYSINGSNOMMER: 2022-09-0038)**

Hierdie kennisgewingbord dien om u, as 'n moontlike Belanghebbende en Geaffekteerde Party, in kennis te stel van 'n Deel 2 Omgewingsmagtiging Wysigings aansoek wat onderneem word vir die bestaande 75 MW Humansrus Fotovoltaïese sonkrag-fasiliteit (ook bekend as "Lesedi Power Company"). Die aansoek vir die wysiging van die bestaande Omgewingsmagtiging is by die Departement van Bosbou, Visserye en die Omgewing (DFFE) (die Bevoegde Owerheid) ingedien ingevolge die Wet op Nasionale Omgewingsbestuur (NEMA), 1998 (Wet Nr. 107 van 1998), soos gewysig, en die Omgewingsimpakevaluering (OIE) Regulasies, 2014 (Regulasies ingevolge artikels 24(5) en 44 van NEMA, 1998), soos gewysig. 'n Deel 2 Omgewingsmagtiging Wysigings aansoek word gedoen omdat daar 'n verandering in die omvang van die Omgewingsmagtiging plaasgevind het. EARTHnSKY Environmental (Edms) Bpk. is aangestel deur die aansoeker, Lesedi Power Company (Pty) Ltd., as die onafhanklike Omgewingsimpakbepalingspraktisyn wat getaak is met die uitvoer van bogenoemde aansoek prosesse. Die Omgewingsimpakbepalingspraktisyn sal ten alle tye verseker dat die proses aan die Wet op die Beskerming van Persoonlike Inligting (Wet Nr. 14 van 2013) (POPIA) voldoen.

**PROJEK BESKRYWING**

Die bestaande Lesedi sonkrag-fasiliteit is geleë 4km suid-oos van die Groenwater nedersetting en 30km oos van Postmasburg, in die Noord-Kaap Provinsie. Die konstruksie van die sonkrag-fasiliteit het in November 2012 begin, binne die goedgekeurde Omgewingsmagtiging tydperk (Augustus 2011 tot Augustus 2014). Die sonkrag-fasiliteit is van 21 Mei 2014 af ten volle operasioneel en sal vir 25 jaar operasioneel wees. Die aansoeker doen hiermee dus aansoek, deur middel van 'n Deel 2 aansoek prosesse, om verskeie wysigings aan die bestaande Omgewingsmagtiging (12/12/20/1903/1, gedateer 23 Februarie 2012) soos uitgereik vir die 75 MW Humansrus Fotovoltaïese 1 Sonkrag-fasiliteit, aan te bring:

1. Bevestiging van die verandering van die relevante kontakpersoon van Oakleaf Investment Holdings 79 (RF) (Pty) Ltd. (handel as Lesedi Power Company (Pty) Ltd.);
2. Die grootte en ligging van die substasie te wysig, sodoende aan te dui dat die substasie bestaan uit die volgende: 'n beheerkamer, eksterne 132kV-transformators, elektriese skakel tuie en kapasitorbanke. Die substasie is ook omhein vir sekuriteit doeleindes;
3. Die ligging van die Operasionele en Onderhoud geboue en infrastruktuur aan te dui wat die volgende in sluit: 'n kantoor en stoor geboue, sekuriteit, ablusie fasiliteite, parking, 'n buite stoor en 'n water behandeling fasiliteit;
4. Die bogrondse 22kV-kraglyne tussen die noordelike sonkrag veld en die substasie in te sluit. Die kraglyn span oor die spoorlyn en die D3381-pad;
5. Die verwydering van die 200m en 50m visuele buffers, wat tans in plek is, vir die bogrondse 22kV kraglyne;
6. Om aan te dui dat die fotovoltaïese panele bestaan uit 100m aaneenlopende seksies. In die suidelike son veld is die paneel rye ongeveer 1 km lank en in die noordelike son veld tot in met 1,5 km lank;
7. Die tydelike stoor van tot en met 300 afval sonkrag paneel modules te mag onderneem, in ooreenstemming met die vereistes van die 2013 Norme en Standaarde vir die Berging van Afval (soos per die Nasionale Omgewingsbestuur Wet op Afval Bestuur, Wet Nr. 59 van 2008);
8. Die gemagtigde totale ontwikkelings oppervlakte met die plaasgrens te belyn. Hierdie dien ook om die bolaag grond wat gegeneer was tydens die konstruksiefase, in 'n hoop te kan stoor op die fasiliteit. Verder meer, om te bevestig dat 'n klein leen groef nie nodig was tydens die konstruksiefase nie, aangesien oortollige materiaal vir opvulling op die terrein gebruik was;
9. Om te bevestig dat die sonbestraling meet paneel wat in plek was tydens die beplannings fase, reeds verwyder is. Die meet paneel was gebruik om data in te samel wat in ag geneem was vir die finale uitleg van die fasiliteit.
10. Om drie outonome weerstasies in te sluit, elk ongeveer 4m in hoogte. Die weerstasies word gebruik vir die deurlopende monitering van plaaslike weerstoestande tydens die operasionele fase. Drie besoedelingstasies (soiling stations) (elk ongeveer 4m<sup>2</sup>) is ook op die fasiliteit om operasionele doeltreffendheid deurlopend te monitor; en
11. Goedkeuring van die finale konstruksie tekening en uitlegplanne vir die hele fasiliteit.

**PROJEK LIGGING**

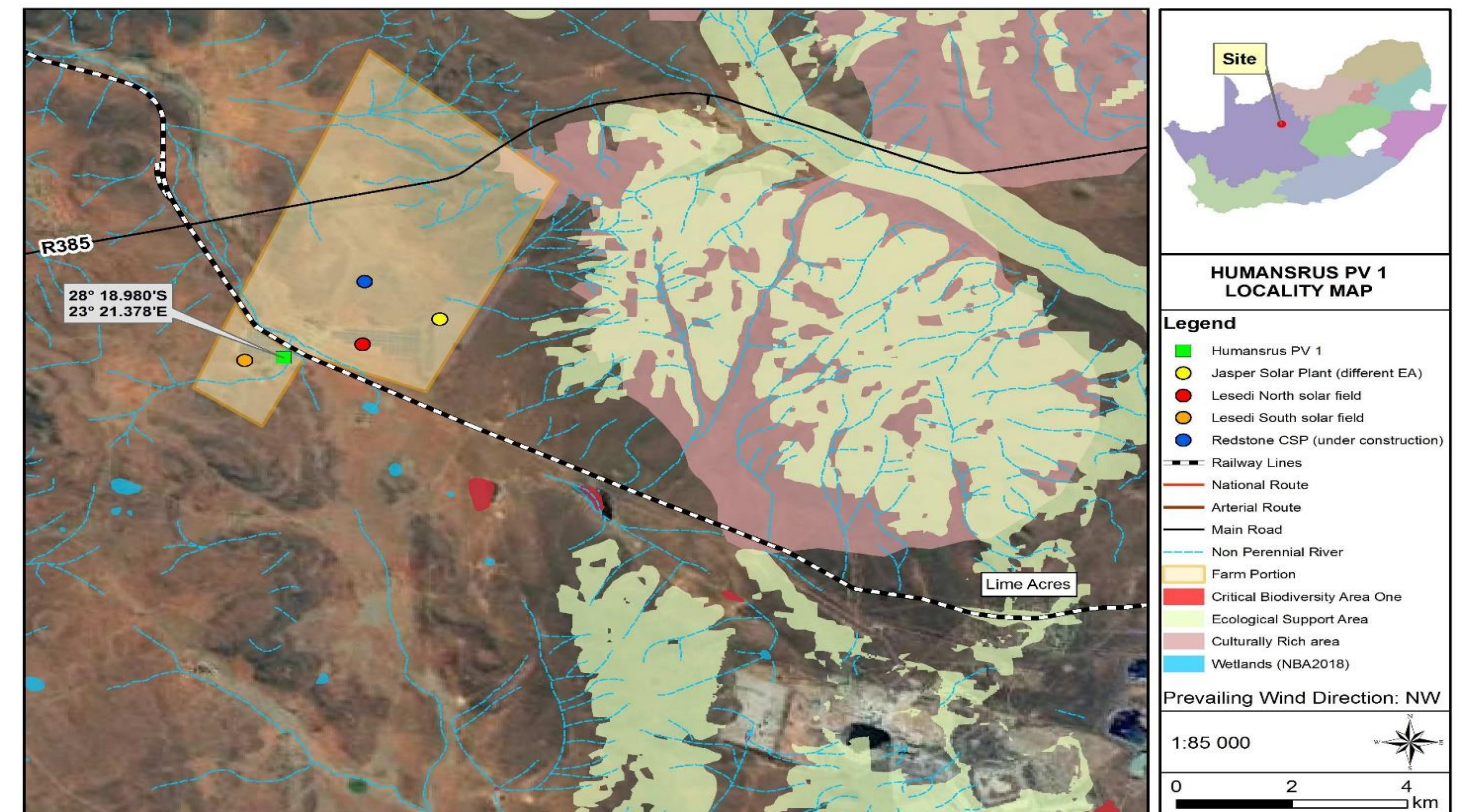
- Projek eiendom: Restant van Plaas 469, Hay RD.
- GPS-koördinate: 28°18'58.80"S; 23°21'22.68"E.

- Die fasiliteit val in die munisipaliteite van Tsantsabane (plaaslik) en die ZF Mgcawu (distrik) in die Noord-Kaapse Provinsie.

**PUBLIEKE DEELNAME PROSES**

Die publieke deelname proses vir die bogenoemde aansoek word uitgevoer volgens die vereistes van Hoofstuk 6 van die OIE-regulasies van 4 Desember 2014, soos gewysig. Indien u wil registreer as 'n Belanghebbende en Geaffekteerde Party vir die projek en daarna op hoogte gehou word van die vordering van die projek en alle publieke deelname geleenthede, versoek en voltooi asseblief 'n "Belanghebbende en Geaffekteerde Party" registrasie vorm (verkrygbaar by die Omgewingsimpakbepalingspraktisyn vir die projek). As u nie 'n bevestiging van registrasie ontvang nie, moet u asseblief bevestig dat ons u registrasievorm ontvang het. Alternatiewelik kan u ook u naam, kontakbesonderhede en belang in die saak skriftelik aan die Omgewingsimpakbepalingspraktisyn verskaf teen **28 Junie 2023**.

Die konsep Omgewingsimpak verslag, operasionele omgewingsbestuursplan (EMPr) en bylae sal aan die publiek beskikbaar gemaak word vir hersiening en om kommentaar te lewer vir 'n tydperk van 30 dae, vanaf **19 Mei 2023 tot 28 Junie 2023**. Alle geregistreerde Belanghebbende en Geaffekteerde Partye sal ook in kennis gestel word. 'n Harde kopieë van die verslag sal beskikbaar wees vir hersiening vanaf **25 Mei 2023** by die Lesedi Sonkrag-fasiliteit, asook by die plaaslike biblioteek Postmasburg: 13 Springbok Straat, Postmasburg. 'n Elektroniese kopieë van die verslag sal per e-pos of WhatsApp aan geregistreerde Belanghebbende en Geaffekteerde Partye voorsien word. Die verslae is ook op hierdie skakel beskikbaar: <https://www.dropbox.com/sh/ey7b9gtcajw6yi/AACbmW-VaquX0SIVFrk2-k6Wa?dl=0>. Laat weet ons asseblief indien u 'n harde kopie van die verslag benodig. Daar word ook 'n publieke vergadering gehou op **13 Junie om 17:00 tot in met 19:00** by die Refenste Laerskool in Groenwater, Postmasburg. Indien u enige verdere inligting benodig, kontak ons gerus. **Enige kommentaar op die konsep Omgewingsimpak verslag en operasionele omgewingsbestuursplan moet teen 28 Junie 2023 aan die Omgewingsimpakbepalingspraktisyn voorgelê word by die kontakbesonderhede hieronder.** EARTHnSKY Environmental (Edms) Bpk. - Lizette Kloppers, Tel: 061 524 2211, E-pos: [lizette@earthnsky.co.za](mailto:lizette@earthnsky.co.za) / [lizette.earthnsky@gmail.com](mailto:lizette.earthnsky@gmail.com), Faks na E-pos: 086 552 6837.



**PART 2 ENVIRONMENTAL AUTHORISATION AMENDMENT APPLICATION: 75 MW HUMANSRUS PHOTOVOLTAIC (PV) 1 SOLAR POWER FACILITY (DFFE REF NO.: 2022-09-0038).** Potential Interested and Affected Party's (I&APs) are informed of the application for a Part 2 Environmental Authorisation (EA) Amendment for the 75 MW Humansrus Photovoltaic (PV) 1 Solar Power Facility (referred to as Lesedi Power Company). The application has been lodged with the Department of Forestry, Fisheries and the Environment (DFFE) (the Competent Authority) in terms of the National Environmental Management Act (NEMA), 1998, as amended, and the Environmental Impact Assessment (EIA) Regulations, 2014, as amended. A Part 2 EA Amendment process in terms of Section 32 of the EIA Regulations is required as there has been a change in scope of the EA (EA 12/12/20/1903/1). The Applicant, Lesedi Power Company (Pty) Ltd., has appointed EARTHnSKY Environmental (Pty) Ltd. as the independent Environmental Assessment Practitioner (EAP) to facilitate the application process. The EAP shall at all times adhere to the requirements on the Protection of Personal Information Act, 2013 (Act No. 14 of 2013) (POPIA). **PROJECT DESCRIPTION:** The Applicant, is applying for various amendments to its existing EA (12/12/20/1903/1, dated 23 February 2012) issued for the 75 MW Humansrus Photovoltaic (PV) 1 Solar Power Facility (referred to as Lesedi Power Project). **PROJECT LOCATION:** Remainder of Farm 469, Hay RD (GPS coordinates: 28°18'58.80"S; 23°21'22.68"E), Tsantsabane Local Municipality, ZF Mgcawu District Municipality, Northern Cape Province. **PUBLIC PARTICIPATION:** The public participation processes for this application are conducted according to the requirements of Chapter 6 of the EIA Regulations of 4 December 2014, as amended. Should you wish to register as an I&AP for the amendment application, and subsequently be kept informed of the progress of the project, please request and complete an "Interested and Affected Party" registration form (obtainable from the EAP). If you do not receive a confirmation of registration, kindly please confirm that we have received your registration form. Alternatively, you may also submit your name, contact information and interest in the matter, in writing, to the EAP using the contact details given below (**before 28 June 2023**). The draft Environmental Impact Report (EIR) and Operational Environmental Management Plan (OEMP) will be available for public review and commenting for a period of 30 days: **19 May 2023 to 28 June 2023**. Hardcopies of the Draft EIR, OEMP and supporting documentation will be available for review at: Lesedi Solar Facility (the Site) and the Postmasburg Library: 13 Springbok Street, Postmasburg from **25 May 2023**. Electronic copies of the report will be provided to registered I&APs via email or other means, as relevant. Please inform us should you require a copy of the report. The reports are also available for download using the following link: <https://www.dropbox.com/sh/ey7b9gtcayw6yi/AACbmW-VaquX0SIVFrk2-k6Wa?dl=0>. A public meeting will be held at the Refenste Primary School: Groenwater, Postmasburg on **13 June 2023 at 17:00-19:00**. **Comments on the draft EIR and Operational OEMP can be submitted to the EAP at the contact details below, by 28 June 2023.** EARTHnSKY Environmental (Pty) Ltd. Lizette Kloppers: Tel and WhatsApp: 061 524 2211; Email: [lizette@earthnsky.co.za](mailto:lizette@earthnsky.co.za) / [lizette.earthnsky@gmail.com](mailto:lizette.earthnsky@gmail.com); Fax to Email: 086 552 6837.

**KAROLO 2 YA KOPO YA PHETOLO YA THEBOLELO YA GO DIRA TIRO MO TIKOLOGONG: 75 MW HUMANSRUS PHOTOVOLTAIC (PV) 1 SOLAR POWER FACILITY (DFFE REF NO.: 2022-09-0038).** Ba go nang le kgonego ya go nna Batho ba ba Nang le Kgatlhego le ba ba Amegang (Interested and Affected Party bo-I&AP) ba itsisiwe ka kopo ya Karolo 2 ya Phetolo ya Thebolelo ya go Dira Tiro mo Tikologong (Environmental Authorisation [EA]) ya 75 MW Humansrus Photovoltaic (PV) 1 Solar Power Facility (e e bidiwang Lesedi Power Company). Kopo eno e neilwe Lefapha la Dikgwa, Tshwaro ya Dithlapi le (*Department of Forestry, Fisheries and the Environment [DFFE]*) (Bolaodi jo Gaisanang) go ya ka Molao wa Naga wa Taolo ya Tikologo (*National Environmental Management Act [NEMA]*), 1998, o o fetotsweng, le Melawana ya Tshekatsheko ya go Omega ga Tikologo (Environmental Impact Assessment [EIA],) 2014, e e fetotsweng. Tiro ya Karolo 2 ya Phetolo ya EA go ya ka Karolo 32 ya Melawana ya EIA e ya tlhokega ka jaana go nnile le phetogo mo tirong yotlhe ya EA (EA 12/12/20/1903/1). Mokopi, ebong Lesedi Power Company (Pty) Ltd., e tlhomile EARTHnSKY Environmental (Pty) Ltd. jaaka Basekaseki ba Tikologo ba ba ikemetseng ka nosi (*Environmental Assessment Practitioner [EAP]*) go rulaganyetsa tiro ya kopo eno. Ka dinako tsotlhe EAP e tla dira tumalanong le tse di batliwang mo Molaong wa Tshireletso ya Tshedimosetso ka ga Motho (*Protection of Personal Information Act, 2013* (Molao No. 14 wa 2013) [POPIA]). **TLHALOSO YA POROJEKE:** Mokopi, o kopa gore go dirwe diphetolo tse di farologaneng mo go EA ya bone e a nang le yone mo nakong eno (12/12/20/1903/1, ya letlha la 23 Tlhakole 2012) e e ntsheditsweng 75 MW Humansrus Photovoltaic (PV) 1 Solar Power Facility (e bidiwang Lesedi Power Project). **LEFELO LA POROJEKE:** Karolo e e Setseng ya Polasi 469, Hay RD (GPS coordinates: 28°18'58.80"S; 23°21'22.68"E), Mmasepala wa Selegae wa Tsantsabane, Mmasepala wa Kgaolo ya ZF Mgcawu, Porofense ya Kapa Bokone. **GO TSAYA KAROLO GA MORAFE:** Tiro ya go tsaya karolo ga morafe e dirwa go ya ka tse di batliwang mo go Kgaolo 6 ya Melawana ya EIA ya Sedimonthole 2014, e e fetotsweng. Fa o ka batla go ikwadisa jaaka I&AP mabapi le tiro ya phetolo, le gore morago o nne o itsisiwe mabapi le kafa porojeke e tswelletseng ka teng, tswetswee kopa foromo le go tlatsa ya go ikwadisa jaaka I&AP (e e ka bonwang mo go EAP). Ntle le moo, romela leina la gago, tshedimosetso ya go igkolaganya le wena le kgatlhego ya gago mo kgannyeng eno, ka go kwalela, EAP o dirisa dintlha tse di newang fa tlase (pele ga 28 Seetebosigo 2023). Terafote ya Pego ya go Omega ga Tikologo (Environmental Impact Report [EIR]) le Operational Environmental Management Plan (OEMP) e tla bo le teng gore e sekasekiwe ke botlhe le go tshwaela mo go yone mo malatsing a le 30: Motsheganong 19, 2023 go ya go Seetebosigo 28, 2023. Dipampiri tsa Terafote ya EIR, OEMP le ditokumente tse di tshegetsang di tlile go nna teng go ka sekasekiwa kwa: Lesedi Solar Facility (Lefelo) le kwa Postmasburg Library: 13 Springbok Street, Postmasburg - go tswa Motsheganong 25, 2023. Dikhopi tsa mo khomphiutheng tsa pego eno di tla newa bo-I&AP ba ba kwadisitsweng ka imeile kgotsa ka ditsela tse dingwe, fa go tshwanela. Tswetswee re itsise fa e le gore o batla khopi ya pego. Gape dipego di teng go ka laisololwa go dirisiwa linki e e latelang: <https://www.dropbox.com/sh/ey7b9gtcajyw6yi/AACbmW-VaquX0SIVFrk2-k6Wa?dl=0>. Go tlile go tshwarwa phuthego ya botlhe kwa Refentse Primary School: Groenwater, Postmasburg ka 13 Seetebosigo 2023 ka 17:00-19:00. Ditshwaelo tsa terafote ya EIR le Operational OEMP di ka romelelwa EAP kwa dintlheng tsa go igkolaganya le bone tse di fa tlase, ka 28 Seetebosigo 2023. EARTHnSKY Environmental (Pty) Ltd. Lizette Kloppers: Mogala le WhatsApp: 061 524 2211; Imeile: [lizette@earthnsky.co.za](mailto:lizette@earthnsky.co.za) / [lizette.earthnsky@gmail.com](mailto:lizette.earthnsky@gmail.com); Romela Fekese kwa Imeileng ya: 086 552 6837.

**KENNISGEWING VAN 'N DEEL 2 OMGEWINGSMAGTIGING WYSIGINGS AANSOEK: 75 MW HUMANSRUS FOTOVOLTAÏESE SONKRAG-FASILITEIT (DEPARTEMENTELE VERWYSINGSNOMMER: 2022-09-0038)** Hierdie advertensie dien om u, as 'n moontlike Belanghebbende en Geaffekteerde Party, in kennis te stel van 'n Deel 2 Omgewingsmagtiging Wysigings aansoek wat onderneem word vir die bestaande 75 MW Humansrus Fotovoltaïese sonkrag-fasiliteit (ook bekend as "Lesedi Power Company"). Die aansoek vir die wysiging van die bestaande Omgewingsmagtiging is by die Departement van Bosbou, Visserye en die Omgewing (DFFE) (die Bevoegde Owerheid) ingedien ingevolge die Wet op Nasionale Omgewingsbestuur (NEMA), 1998 (Wet Nr. 107 van 1998), soos gewysig, en die Omgewingsimpakevaluering (OIE) Regulasies, 2014 (Regulasies ingevolge artikels 24(5) en 44 van NEMA, 1998), soos gewysig. 'n Deel 2 Omgewingsmagtiging Wysigings aansoek word gedoen omdat daar 'n verandering in die omvang van die Omgewingsmagtiging plaasgevind het. EARTHnSKY Environmental (Edms) Bpk. is aangestel deur die aansoeker, Lesedi Power Company (Pty) Ltd., as die onafhanklike Omgewingsimpakbepalingspraktisyn wat getaak is met die uitvoer van bogenoemde aansoek prosesse. Die Omgewingsimpakbepalingspraktisyn sal ten alle tye verseker dat die proses aan die Wet op die Beskerming van Persoonlike Inligting (Wet Nr. 14 van 2013) (POPIA) voldoen. **PROJEK BESKRYWING** Die bestaande Lesedi sonkrag-fasiliteit is geleë 4km suid-oos van die Groenwater nedersetting en 30km oos van Postmasburg, in die Noord-Kaap Provinsie. Die konstruksie van die sonkrag-fasiliteit het in November 2012 begin, binne die goedgekeurde Omgewingsmagtiging tydperk (Augustus 2011 tot Augustus 2014). Die sonkrag-fasiliteit is van 21 Mei 2014 af ten volle operasioneel en sal vir 25 jaar operasioneel wees. Die aansoeker doen hiermee dus aansoek, deur middel van 'n Deel 2 aansoek proses, om verskeie wysigings aan die bestaande Omgewingsmagtiging (12/12/20/1903/1, gedateer 23 Februarie 2012) soos uitgereik vir die 75 MW Humansrus Fotovoltaïese 1 Sonkrag-fasiliteit, aan te bring. **PROJEK LIGGING** Projek eiendom: Restant van Plaas 469, Hay RD. GPS-koördinate: 28°18'58.80"S; 23°21'22.68"E. Die fasiliteit val in die munisipaliteite van Tsantsabane (plaaslik) en die ZF Mgcawu (distrik) in die Noord-Kaapse Provinsie. **PUBLIEKE DEELNAME PROSES** Die publieke deelname proses vir die bogenoemde aansoeke word uitgevoer volgens die vereistes van Hoofstuk 6 van die OIE-regulasies van 4 Desember 2014, soos gewysig. Indien u wil registreer as 'n Belanghebbende en Geaffekteerde Party vir die projek en daarna op hoogte gehou word van die vordering van die projek en alle publieke deelname geleenthede, versoek en voltooi asseblief 'n "Belanghebbende en Geaffekteerde Party" registrasie vorm (verkrygbaar by die Omgewingsimpakbepalingspraktisyn vir die projek). As u nie 'n bevestiging van registrasie ontvang nie, moet u asseblief bevestig dat ons u registrasievorm ontvang het. Alternatiewelik kan u ook u naam, kontakbesonderhede en belang in die saak skriftelik aan die Omgewingsimpakbepalingspraktisyn verskaf teen **28 Junie 2023**. Die konsep Omgewingsimpak verslag, operasionele omgewingsbestuursplan (EMPr) en bylae sal aan die publiek beskikbaar gemaak word vir hersiening en om kommentaar te lewer vir 'n tydperk van 30 dae, vanaf **19 Mei 2023 tot 28 Junie 2023**. Alle geregistreerde Belanghebbende en Geaffekteerde Partye sal ook in kennis gestel word. 'n Harde kopieë van die verslag sal beskikbaar wees vir hersiening vanaf **25 Mei 2023** by die Lesedi Sonkrag-fasiliteit, asook by die plaaslike biblioteek Postmasburg: 13 Springbok Straat, Postmasburg. 'n Elektroniese kopieë van die verslag sal per e-pos of WhatsApp aan geregistreerde Belanghebbende en Geaffekteerde Partye voorsien word. Die verslae is ook op hierdie skakel beskikbaar: <https://www.dropbox.com/sh/ey7b9gtcajyw6yi/AACbmW-VaquX0SIVFrk2-k6Wa?dl=0>. Laat weet ons asseblief indien u 'n harde kopie van die verslag benodig. Daar word ook 'n publieke vergadering gehou op **13 Junie om 17:00 tot in met 19:00** by die Refenste Laerskool in Groenwater, Postmasburg. Indien u enige verdere inligting benodig, kontak ons gerus. **Enige kommentaar op die konsep Omgewingsimpak verslag en operasionele omgewingsbestuursplan moet teen 28 Junie 2023 aan die Omgewingsimpakbepalingspraktisyn voorgelê word by die kontakbesonderhede hieronder.** EARTHnSKY Environmental (Edms) Bpk. - Lizette Kloppers, Tel: 061 524 2211, E-pos: [lizette@earthnsky.co.za](mailto:lizette@earthnsky.co.za) / [lizette.earthnsky@gmail.com](mailto:lizette.earthnsky@gmail.com), Faks na E-pos: 086 552 6837.