

Legend

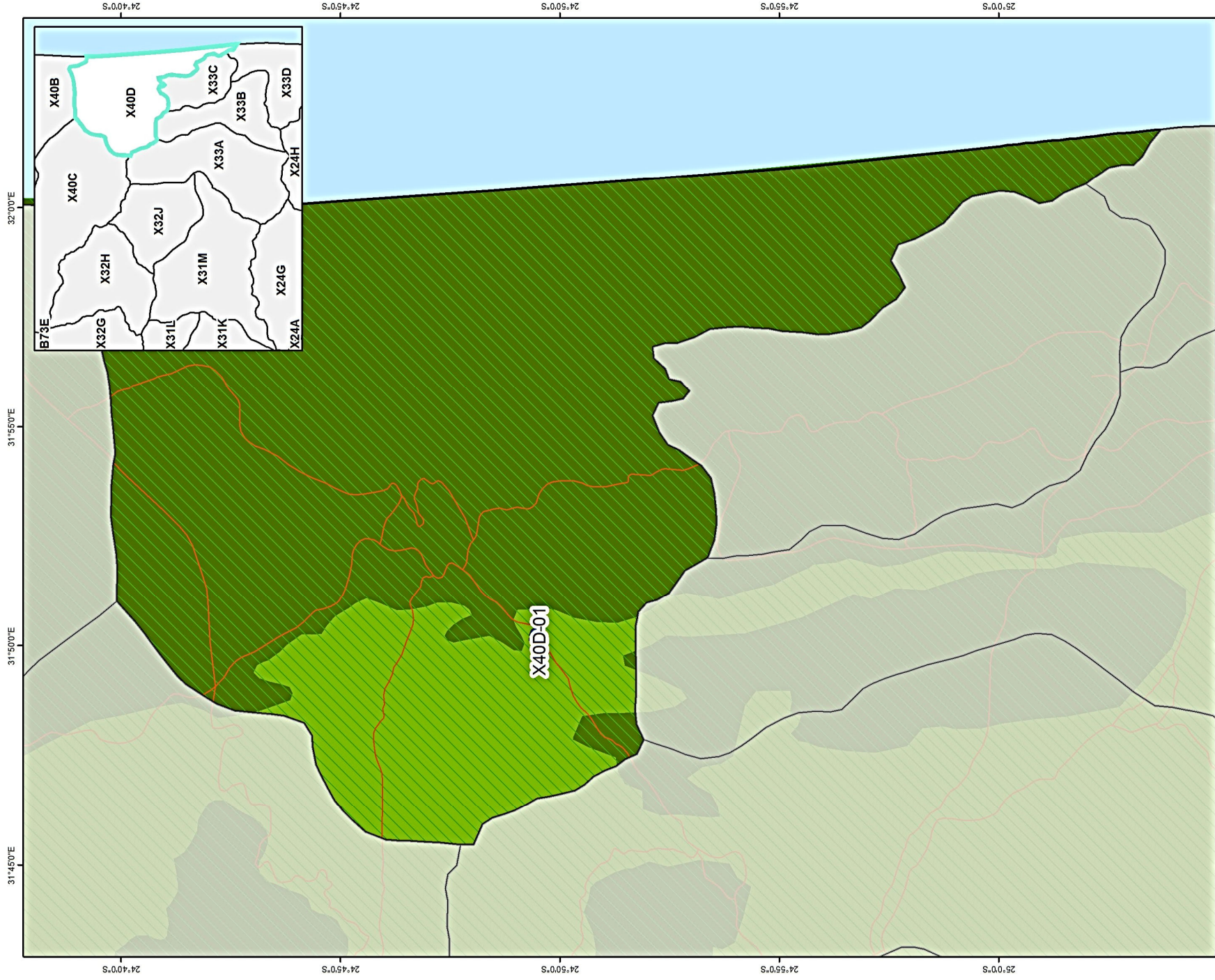
- Wetland
- Quaternary boundary
- Roads
- Protected areas
 - CBA (terrestrial)
 - CBA (aquatic)
- Ecosystem protection level
 - Well protected
 - Moderately protected
 - Poorly protected
- Ecosystems threat status
 - Vulnerable
 - Endangered
 - Critically endangered



Coordinate system : Geographic
Datum : WGS84

Limpopo - Kruger National Park - B90E

1:182,110



Legend

- Wetland
- Quaternary boundary
- Roads
- Protected areas
- CBA (terrestrial)
- CBA (aquatic)

- Well protected
- Moderately protected
- Poorly protected

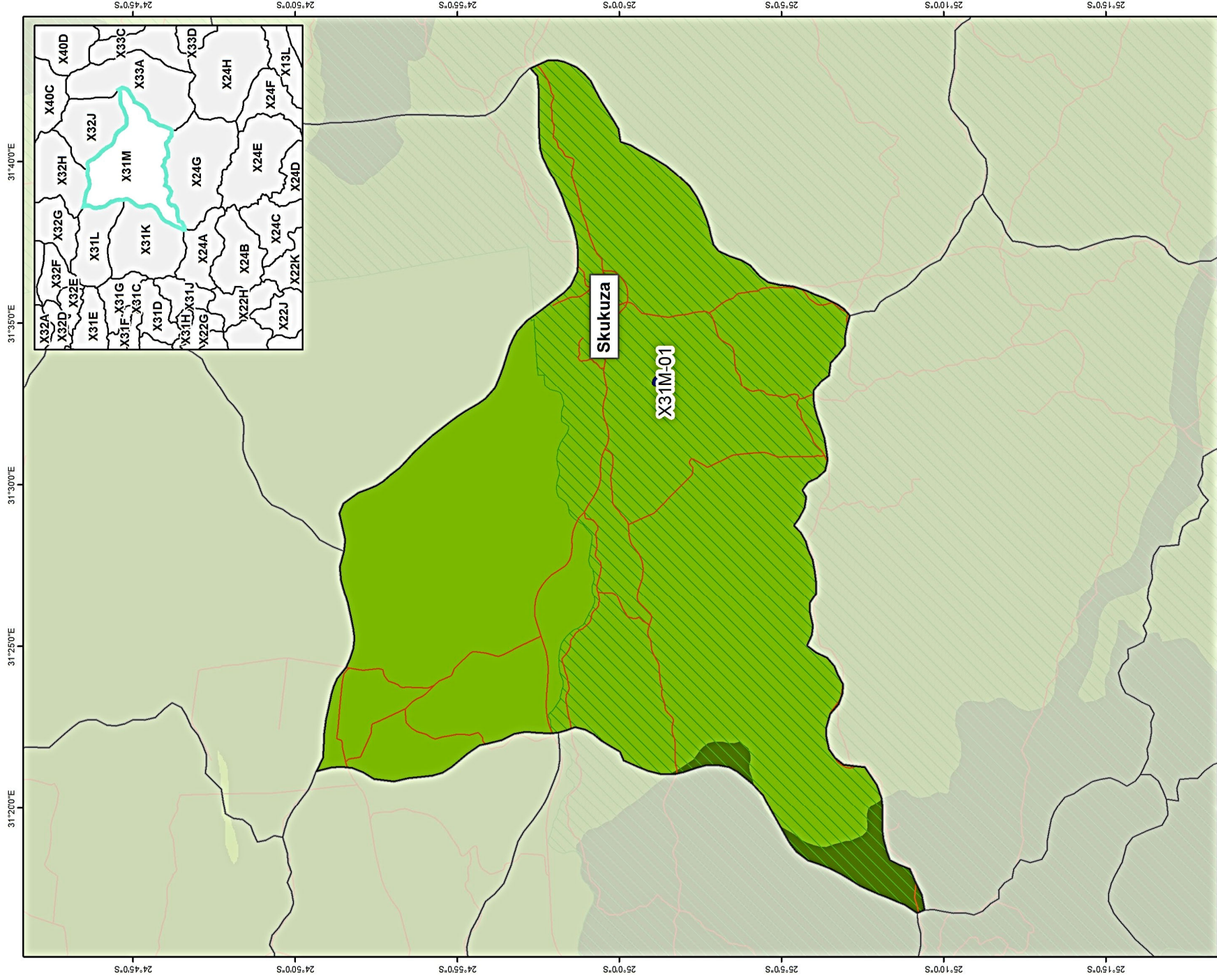
- Vulnerable
- Endangered
- Critically endangered

- N

Coordinate system : Geographic
Datum : WGS84

Mpumalanga - Kruger National Park - X40D

1:209,680



Legend

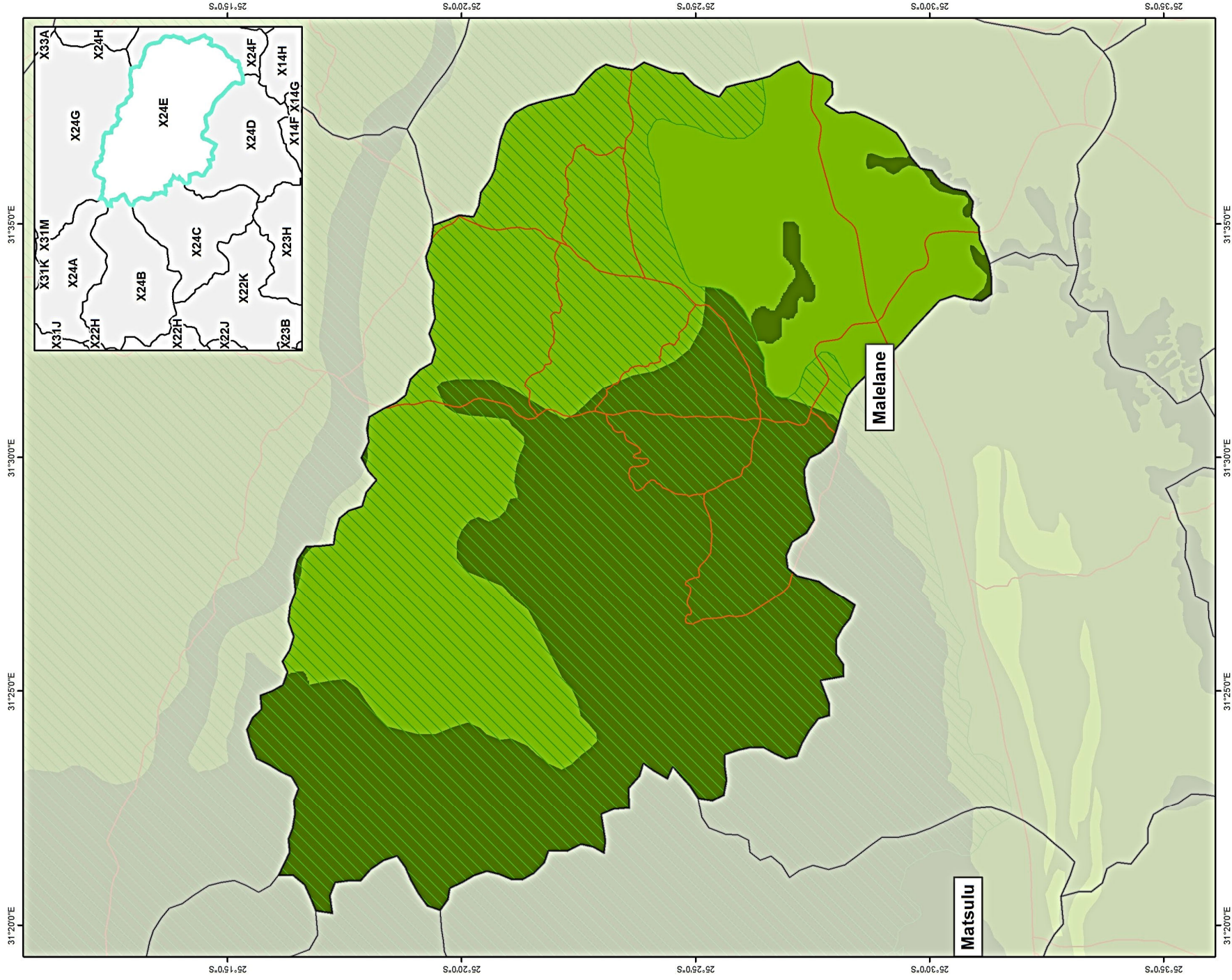
- Wetland
- Quaternary boundary
- Roads
- Protected areas
- CBA (terrestrial)
- CBA (aquatic)
- Well protected
- Moderately protected
- Poorly protected
- Vulnerable
- Endangered
- Critically endangered



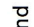
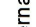
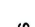
Coordinate system : Geographic
Datum : WGS84

Mpumalanga - Kruger National Park - X31M

1:284,200






Legend

-  Wetland
-  Quaternary boundary
-  Roads

-  Protected areas
-  CBA (terrestrial)
-  CBA (aquatic)

-  Well protected
-  Moderately protected
-  Poorly protected

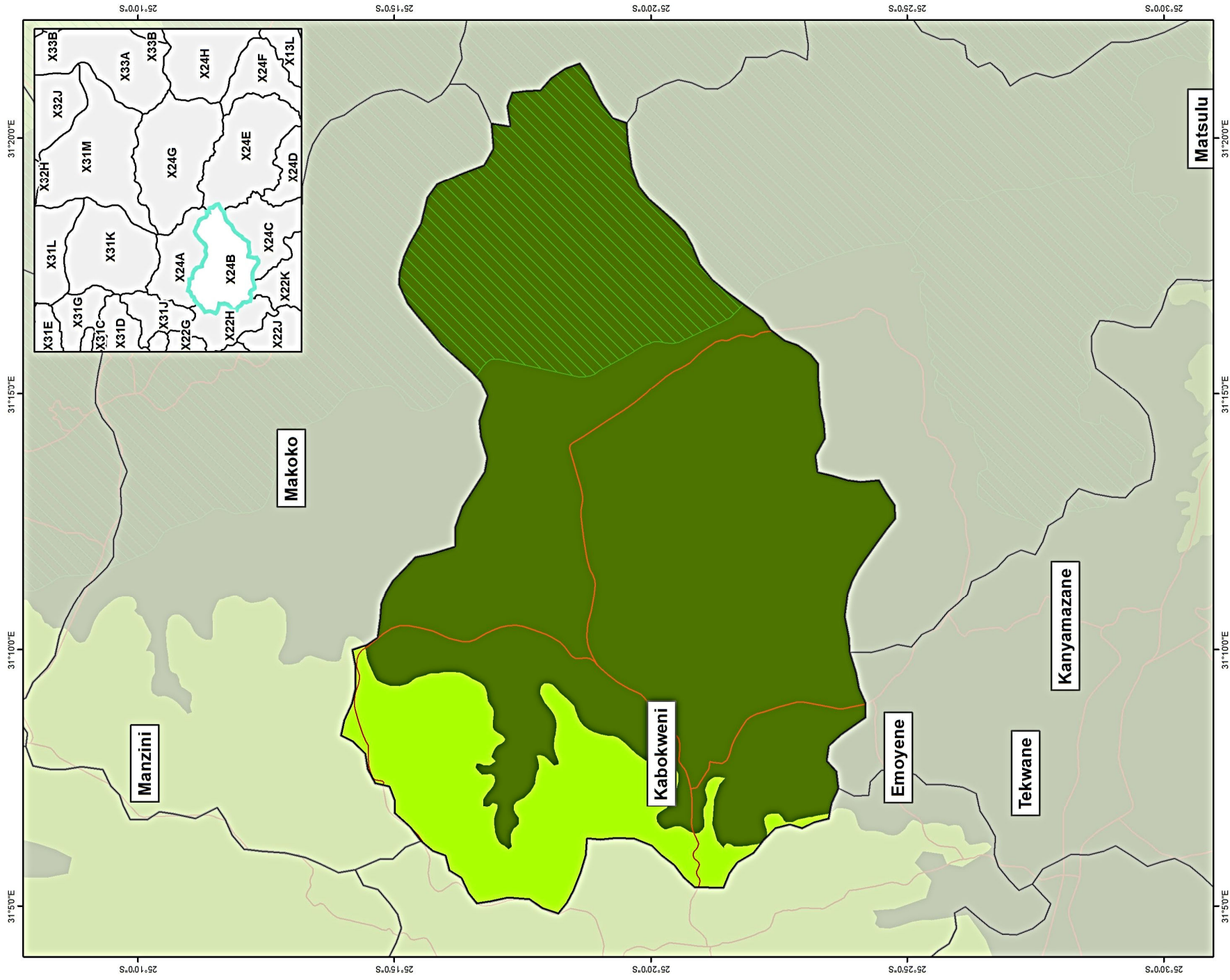
-  Vulnerable
-  Endangered
-  Critically endangered



Coordinate system : Geographic
Datum : WGS84

Mpumalanga - Kruger National Park - X24E

1:196,530



Legend

- Wetland
- Quaternary boundary
- Roads
- Protected areas
- CBA (terrestrial)
- CBA (aquatic)

- Well protected
- Moderately protected
- Poorly protected

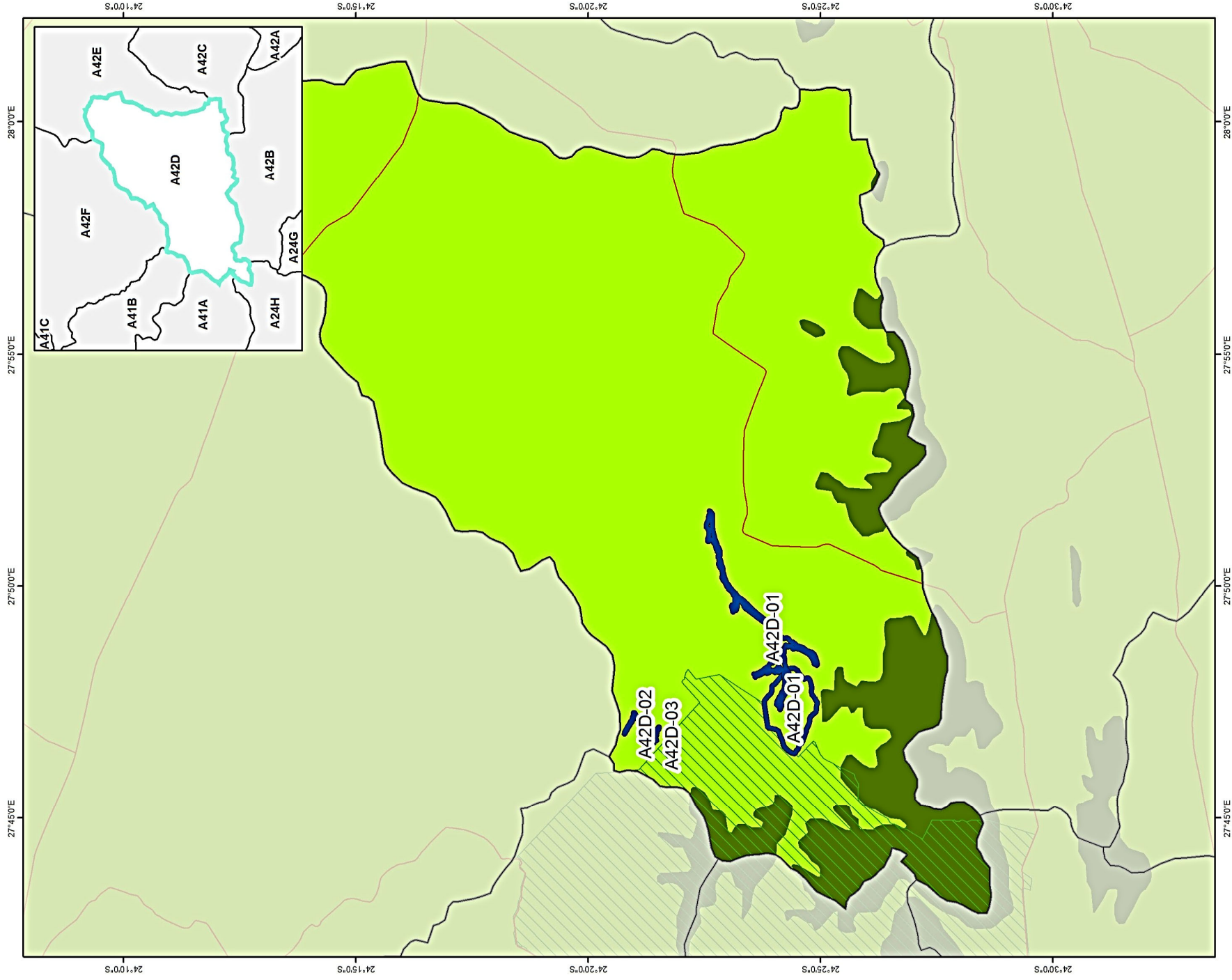
- Vulnerable
- Endangered
- Critically endangered

- N



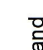

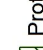
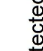

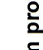


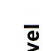

Coordinate system : Geographic
Datum : WGS84

Mpumalanga - Kruger National Park - X24B

1:179,000



Legend

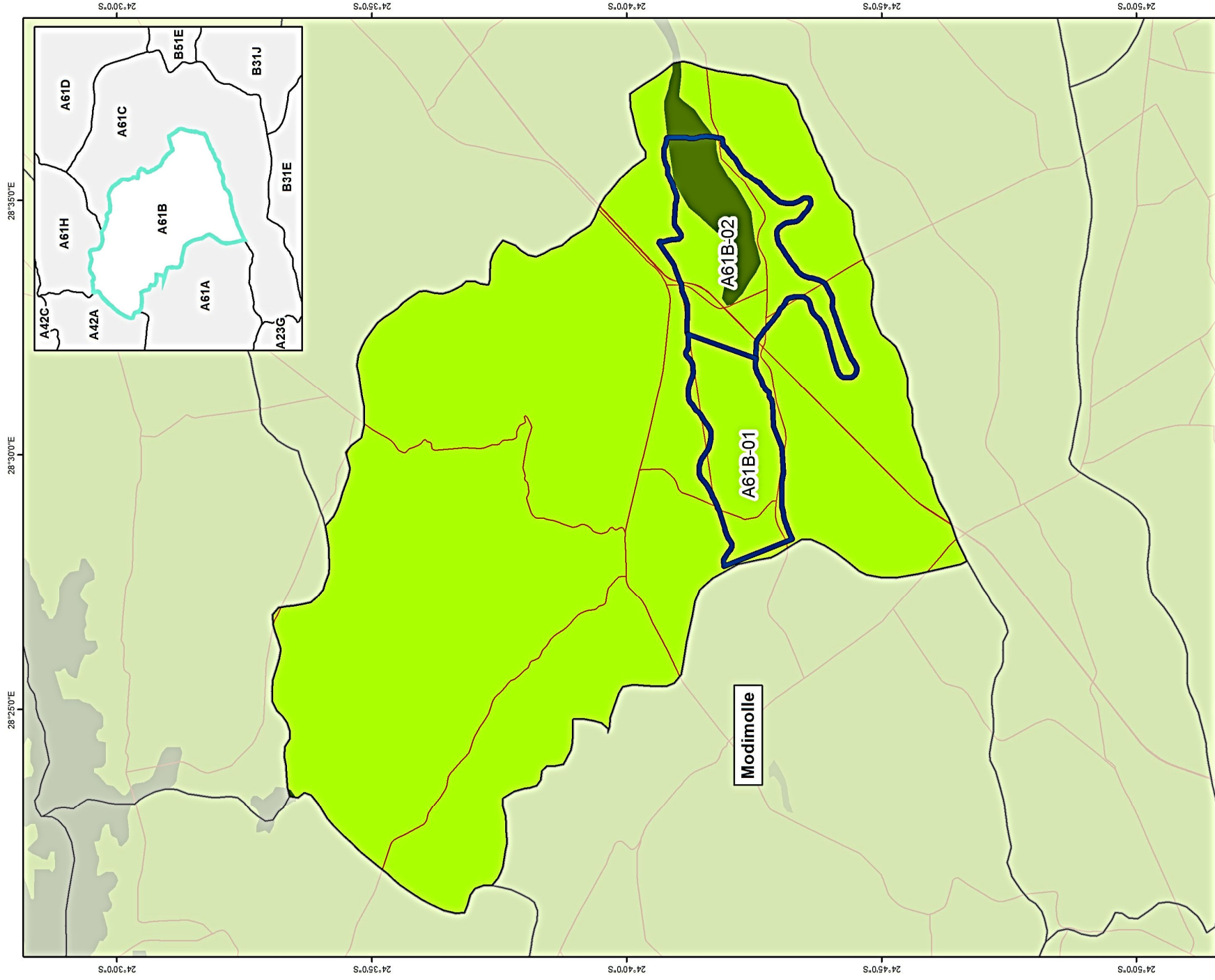
-  Wetland
-  Quaternary boundary
-  Roads
-  Protected areas
-  CBA (terrestrial)
-  CBA (aquatic)
-  Well protected
-  Moderately protected
-  Poorly protected
-  Vulnerable
-  Endangered
-  Critically endangered









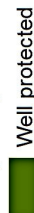

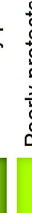
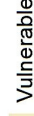

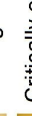
Coordinate system : Geographic
Datum : WGS84

Limpopo - Waterberg - A42D

1:197,470



Legend

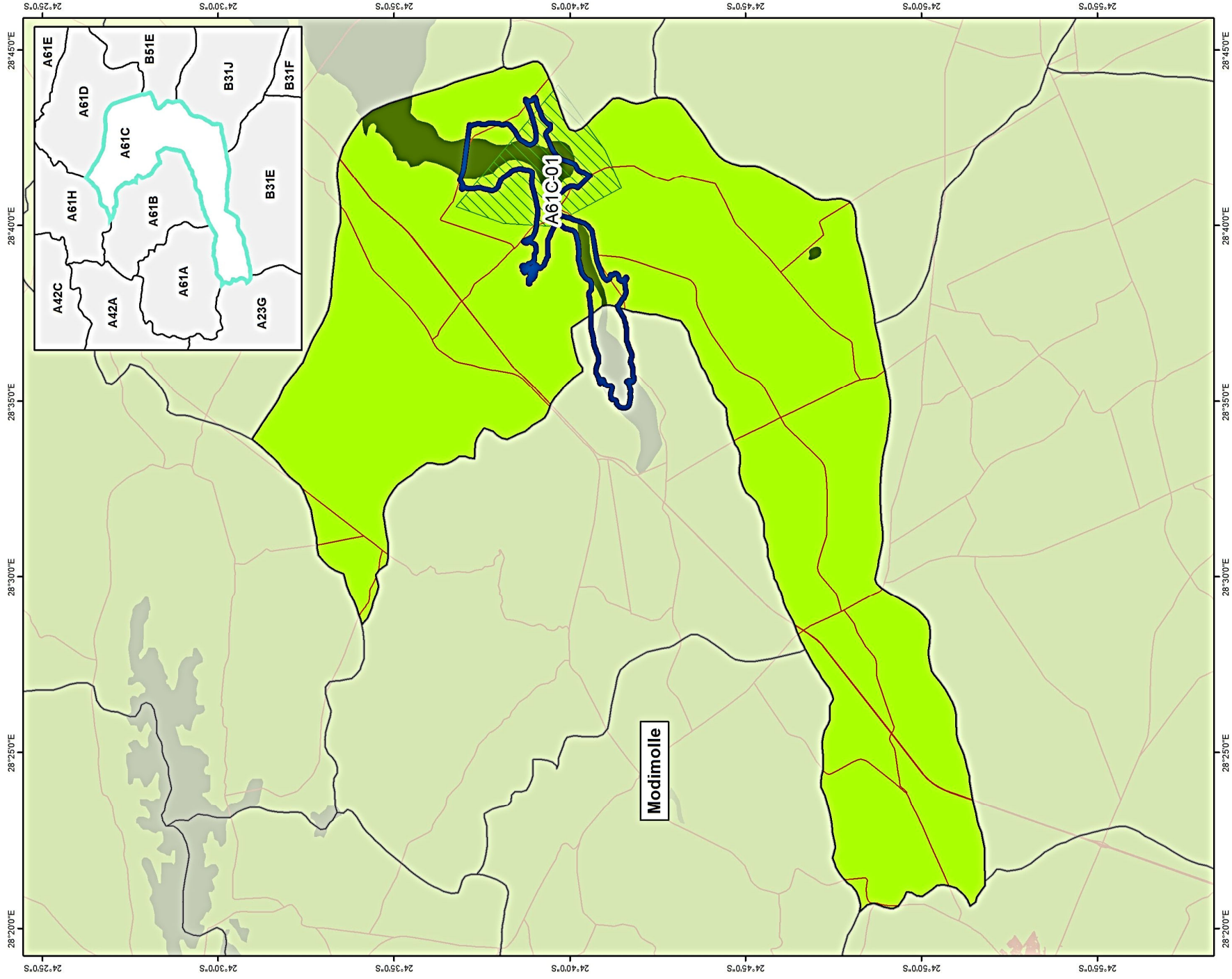
-  Wetland
-  Quaternary boundary
-  Roads
-  Protected areas
-  CBA (terrestrial)
-  CBA (aquatic)
-  Well protected
-  Moderately protected
-  Poorly protected
-  Vulnerable
-  Endangered
-  Critically endangered



Coordinate system : Geographic
Datum : WGS84

Limpopo - Waterberg - A61B

1:180,470



Legend

- Wetland
- Quaternary boundary
- Roads
- Protected areas
- CBA (terrestrial)
- CBA (aquatic)
- Well protected
- Moderately protected
- Poorly protected
- Vulnerable
- Endangered
- Critically endangered

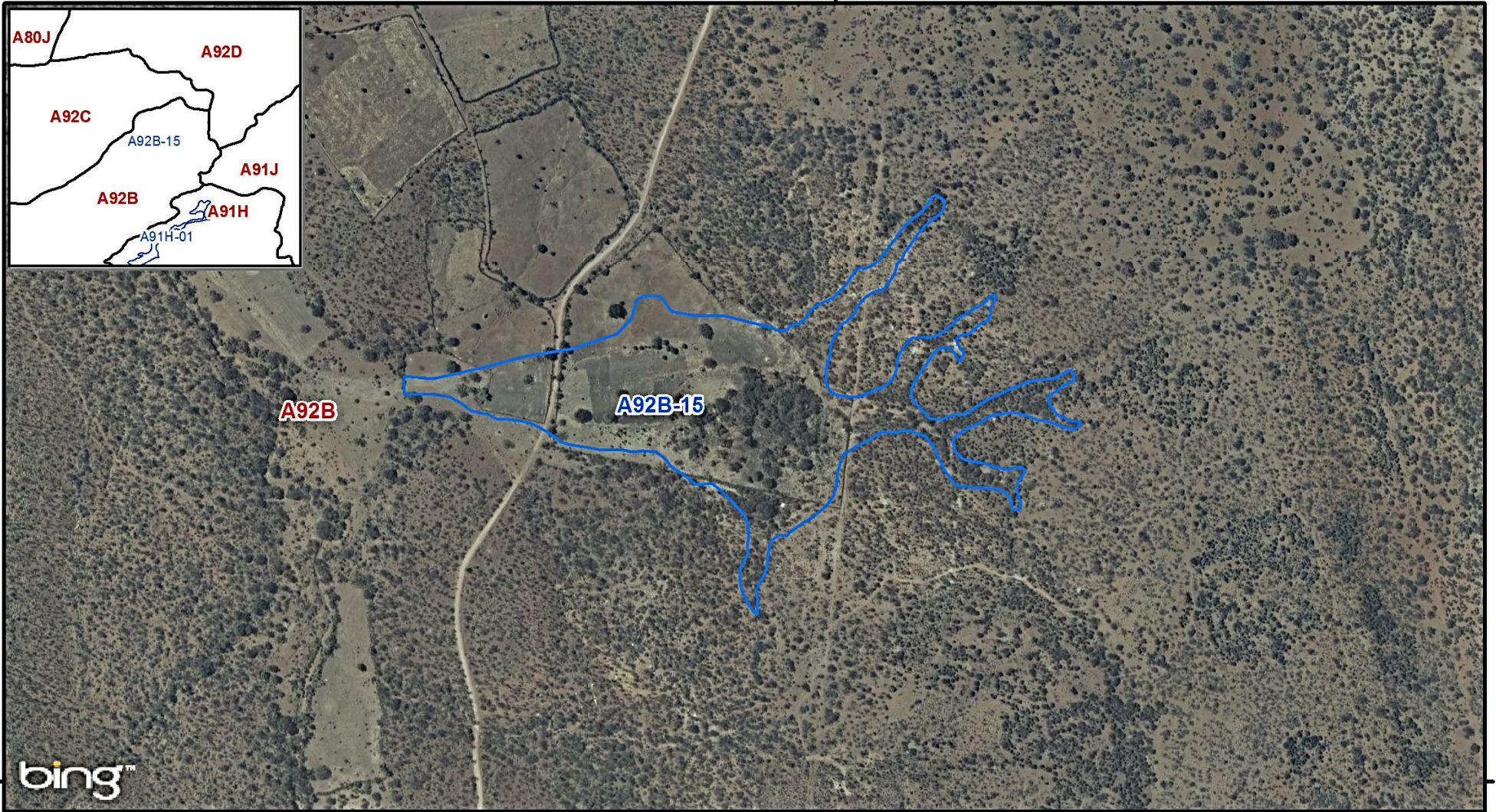


Coordinate system : Geographic
Datum : WGS84

Limpopo - Waterberg - A61C

1:261,210

22°34'0"S

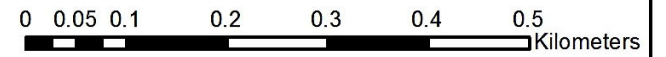


30°47'0"E

30°47'0"E

22°34'0"S

-  Quaternary Boundary
-  Wetlands



Co ordinate system : Geographic
Datum : WGS84

Limpopo - Mutale - A92B-15 - Tshamushoka - m01

1:10,000



Quaternary Boundary
 Wetlands

N

0 0.0275 0.055 0.11 0.165 0.22 0.275 Kilometers

Co ordinate system : Geographic
 Datum : WGS84

Limpopo - Mutale - A92B-16 - Tshamushoka - m01

1:5,000

30°48'0"E



30°48'0"E

▣ Quaternary Boundary
▭ Wetlands

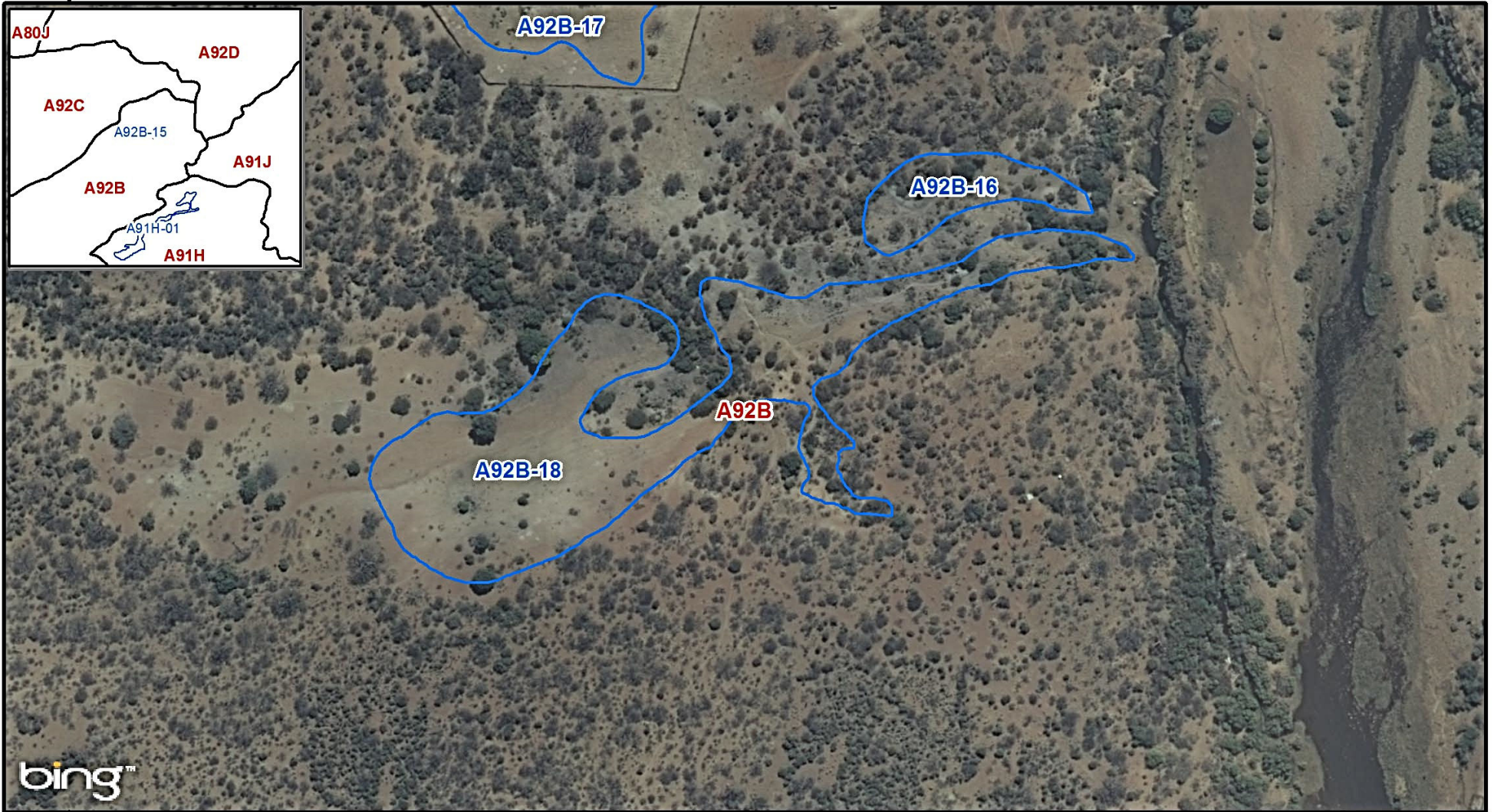
0 0.0275 0.055 0.11 0.165 0.22 0.275 Kilometers

Co ordinate system : Geographic
Datum : WGS84

Limpopo - Mutale - A92B-17 - Tshamushoka - m01

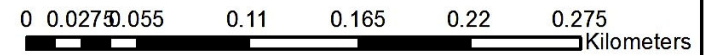
1:5,000

30°48'0"E



30°48'0"E

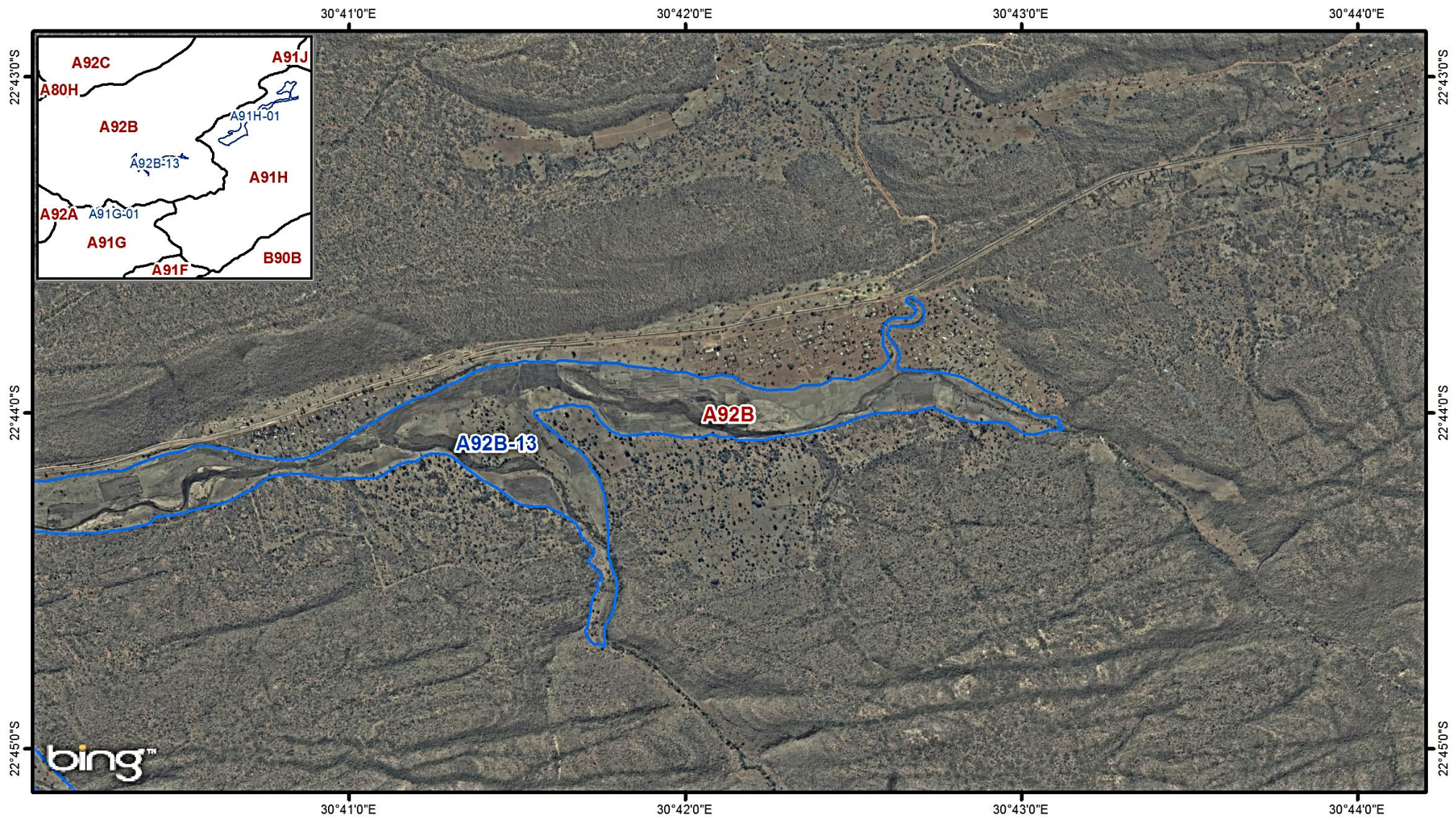
-  Quaternary Boundary
-  Wetlands



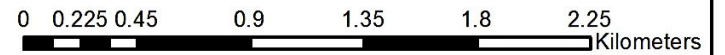
Co ordinate system : Geographic
Datum : WGS84

Limpopo - Mutale - A92B-18 - Tshamushoka - m01

1:5,000



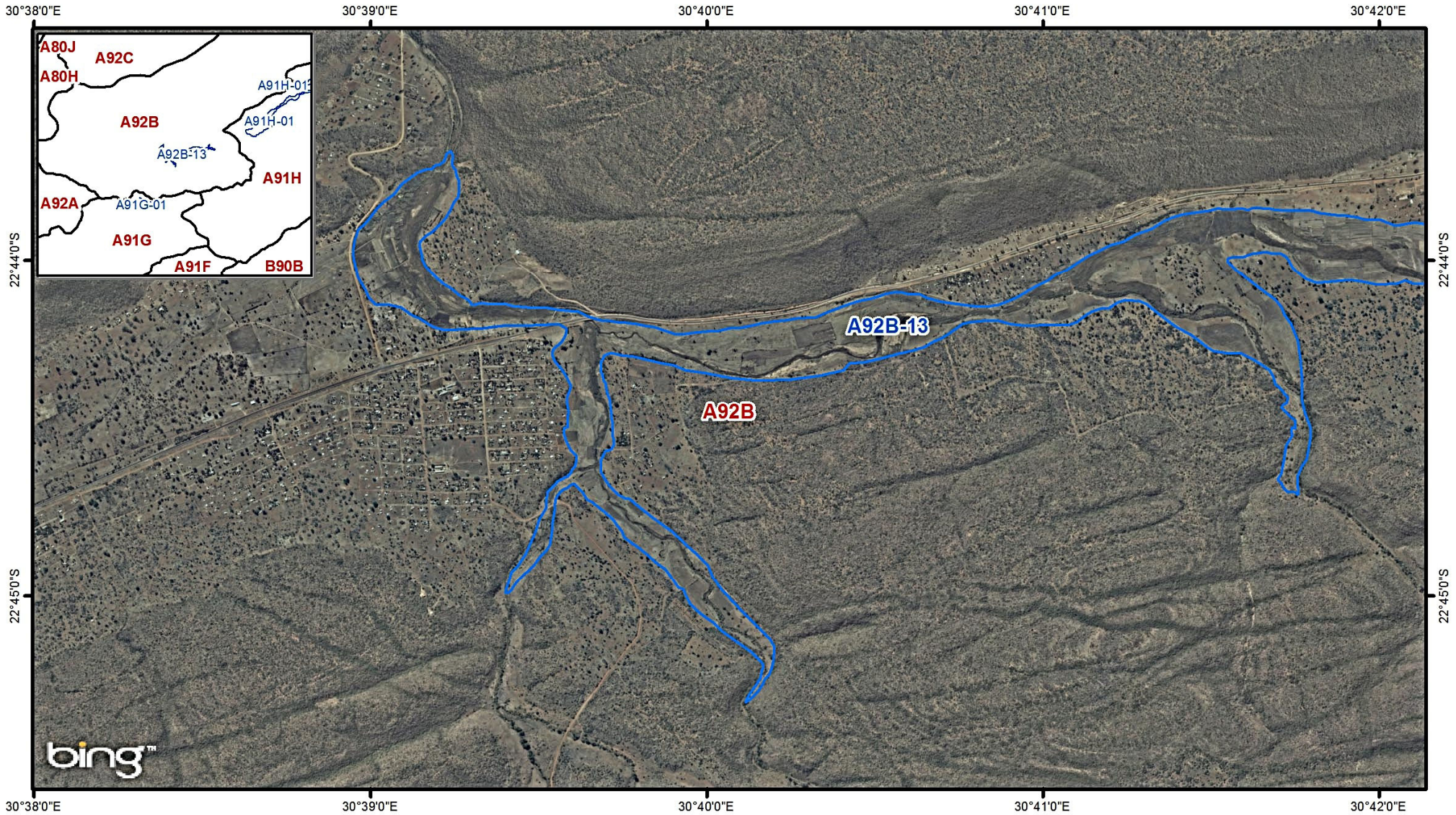
-  Quaternary Boundary
-  Wetlands



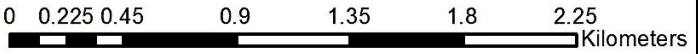
Co ordinate system : Geographic
Datum : WGS84

Limpopo - Mutale - A92B-13 - Sambandou - m01

1:40,000



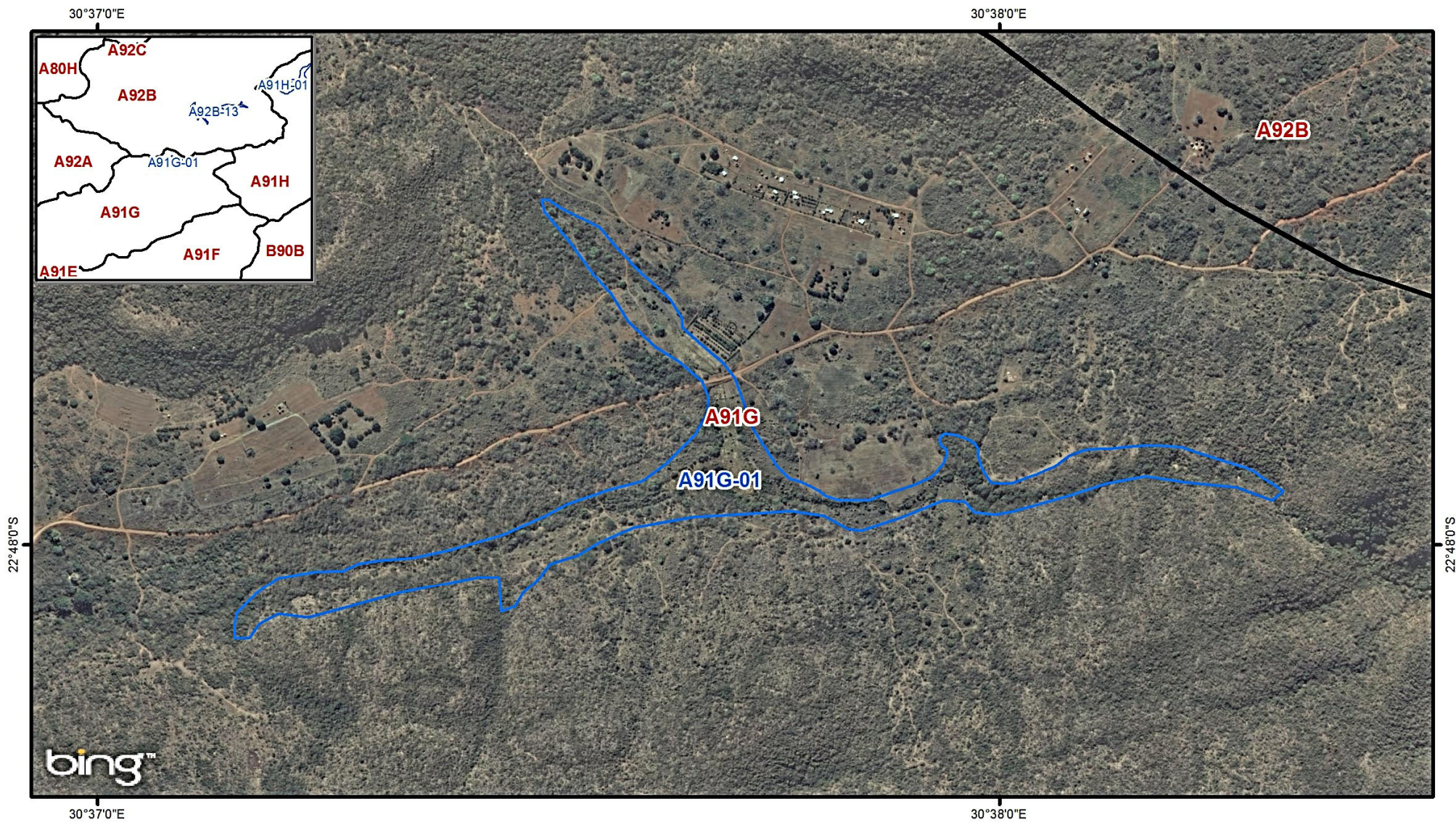
- Quaternary Boundary
- Wetlands





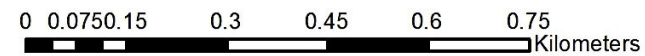
Co ordinate system : Geographic
Datum : WGS84

Limpopo - Mutale - A92B-13 - Sambandou - m02

1:40,000



-  Quaternary Boundary
-  Wetlands



Co ordinate system : Geographic
Datum : WGS84

Limpopo - Mutale - A91G-01 - Lwama-Tshedzi - m01

1:15,000

22°51'0"S

22°52'0"S

22°53'0"S

30°18'0"E

30°18'0"E

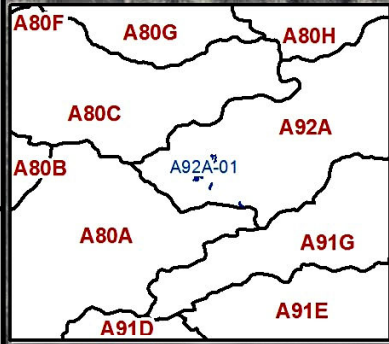
30°17'0"E

30°17'0"E

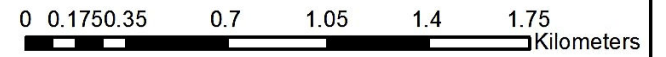
22°51'0"S

22°52'0"S

22°53'0"S



-  Quaternary Boundary
-  Wetlands



Co ordinate system : Geographic
 Datum : WGS84



Limpopo - Mutale - A92A-01 - Mutale-Fundudzi - m01

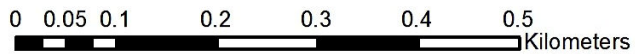
1:35,000

22°54'0"S



22°54'0"S

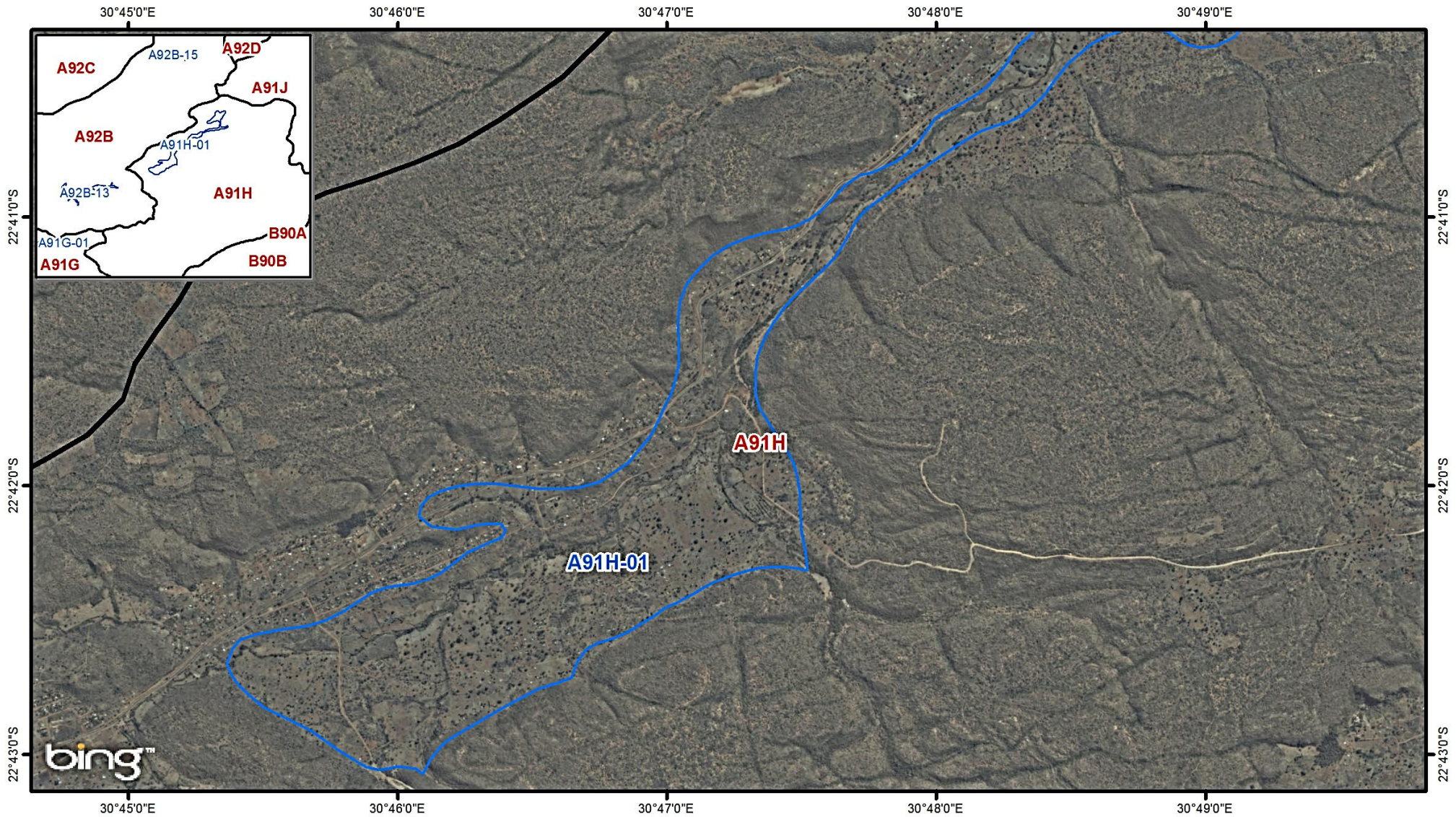
-  Quaternary Boundary
-  Wetlands



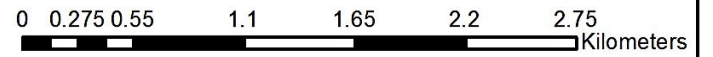
Co ordinate system : Geographic
 Datum : WGS84

Limpopo - Mutale - A92A-01 - Mutale-Fundudzi - m02

1:10,000



- Quaternary Boundary
- Wetlands



Co ordinate system : Geographic
Datum : WGS84

Limpopo - Mutale - A91H-01 - Mkuya Lambwe - m01

1:50,000