

- Quaternary Boundary
- Wetlands



Co ordinate system : Geographic  
Datum : WGS84

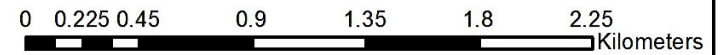
Limpopo - Mutale - A91H-01 - Mkuya Lambwe - m02

1:50,000





- Quaternary Boundary
- Wetlands

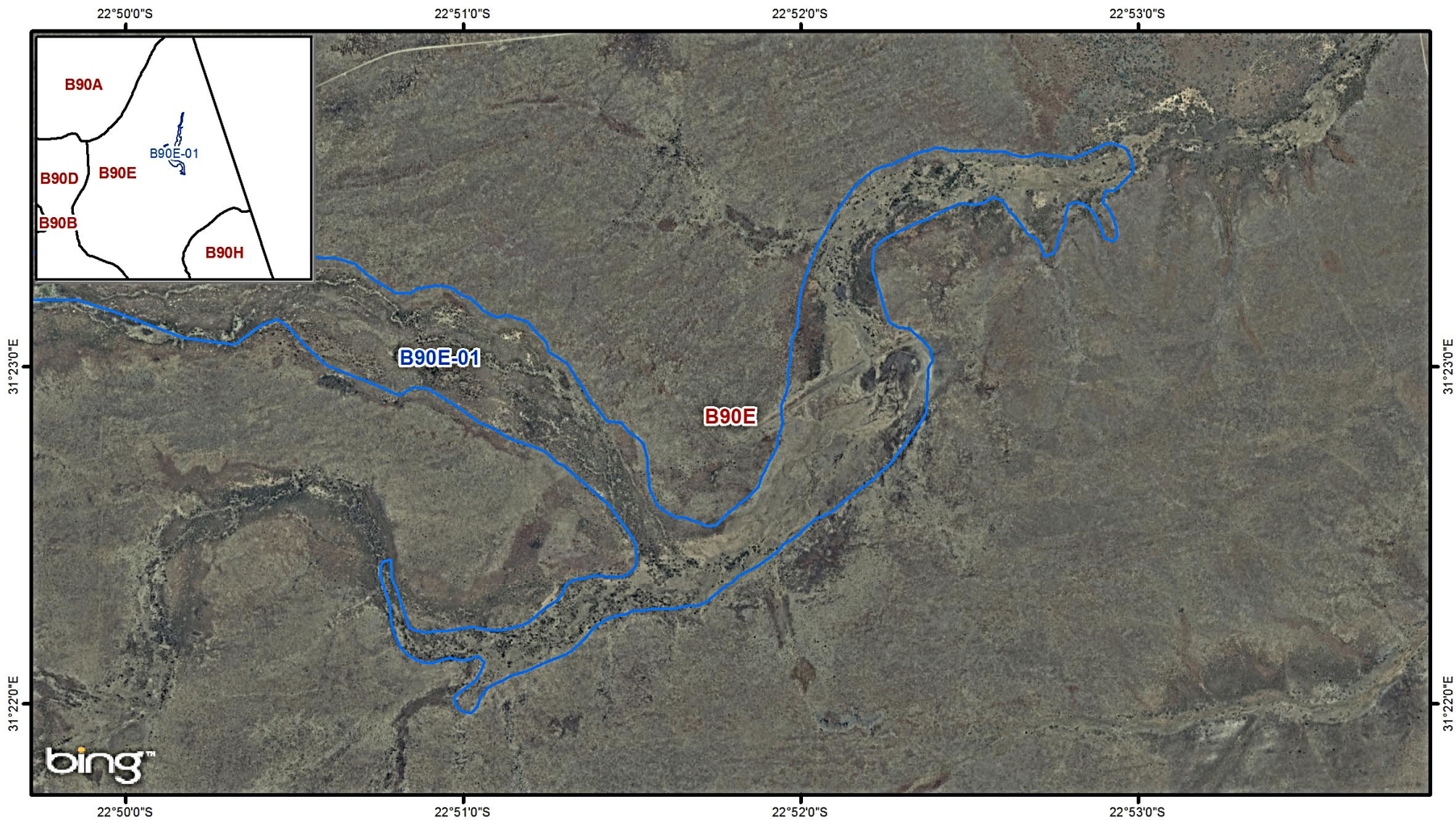


Co ordinate system : Geographic  
Datum : WGS84

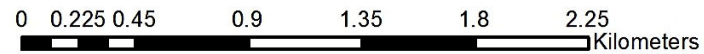
Limpopo - Kruger National Park - B90E-01 - Langtoon - m01

1:40,000





- Quaternary Boundary
- Wetlands



Co ordinate system : Geographic  
Datum : WGS84

Limpopo - Kruger National Park - B90E-01 - Langtoon - m02


1:40,000

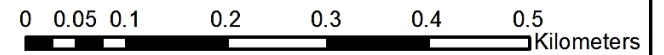


31°50'0"E



31°50'0"E

-  Quaternary Boundary
-  Wetlands



Co ordinate system : Geographic  
Datum : WGS84

Mpumalanga - Kruger National Park - X40D-01 - Silolweni dam - m01

1:10,000



25°1'0"S

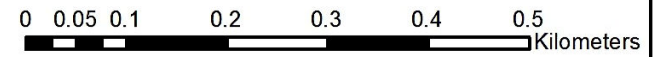


25°1'0"S

31°33'0"E

31°33'0"E

-  Quaternary Boundary
-  Wetlands



Co ordinate system : Geographic  
 Datum : WGS84

Mpumalanga - Kruger National Park - X31M-01 - Nwatsishaka Road - m01

1:10,000

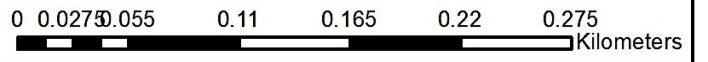


31°23'0"E



31°23'0"E

- Quaternary Boundary
- Wetlands

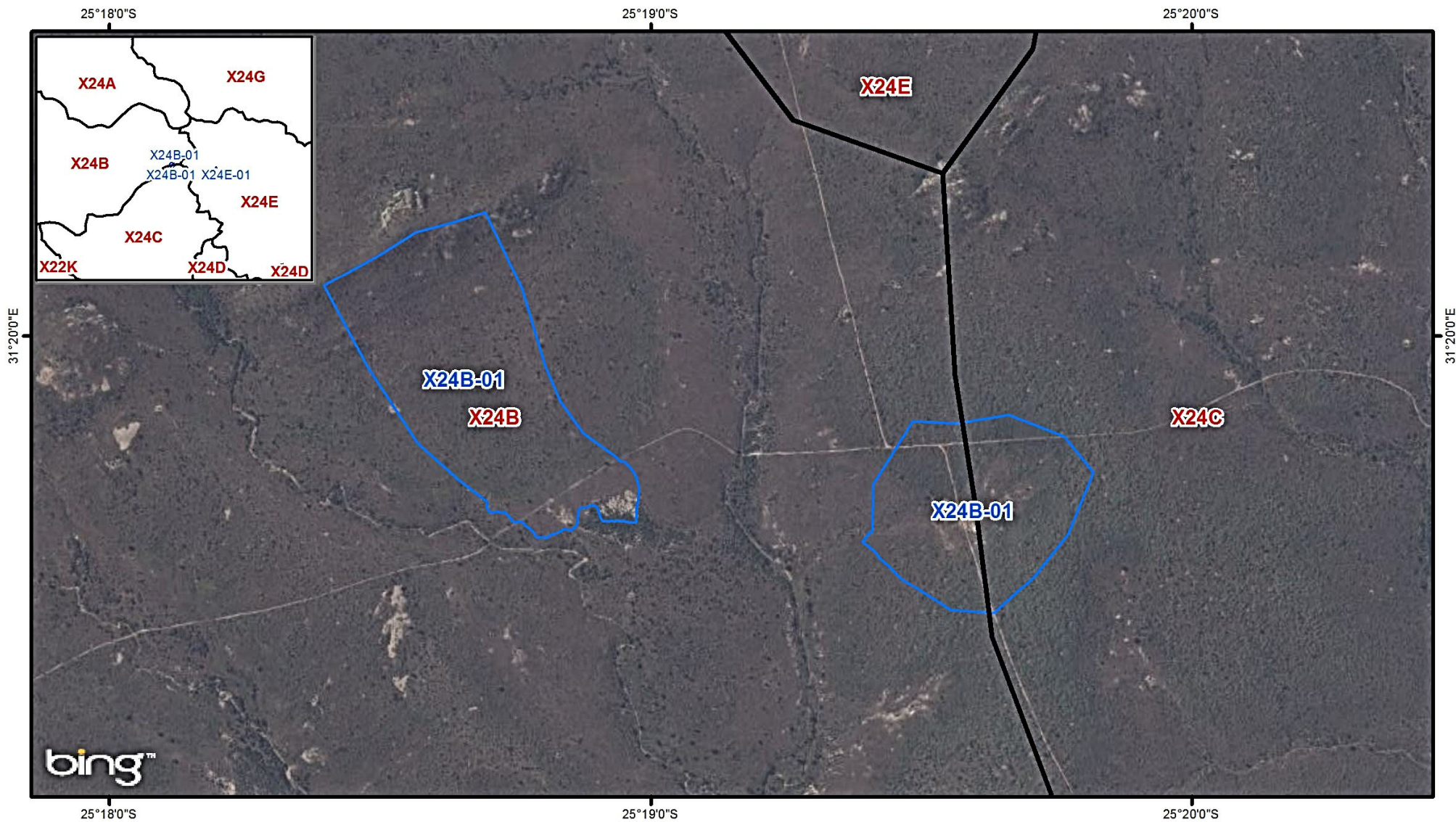




Co ordinate system : Geographic  
 Datum : WGS84

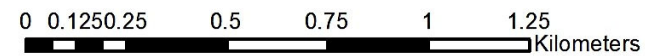
Mpumalanga - Kruger National Park - X24E-01 - Wetland - m01

1:5,000





-  Quaternary Boundary
-  Wetlands

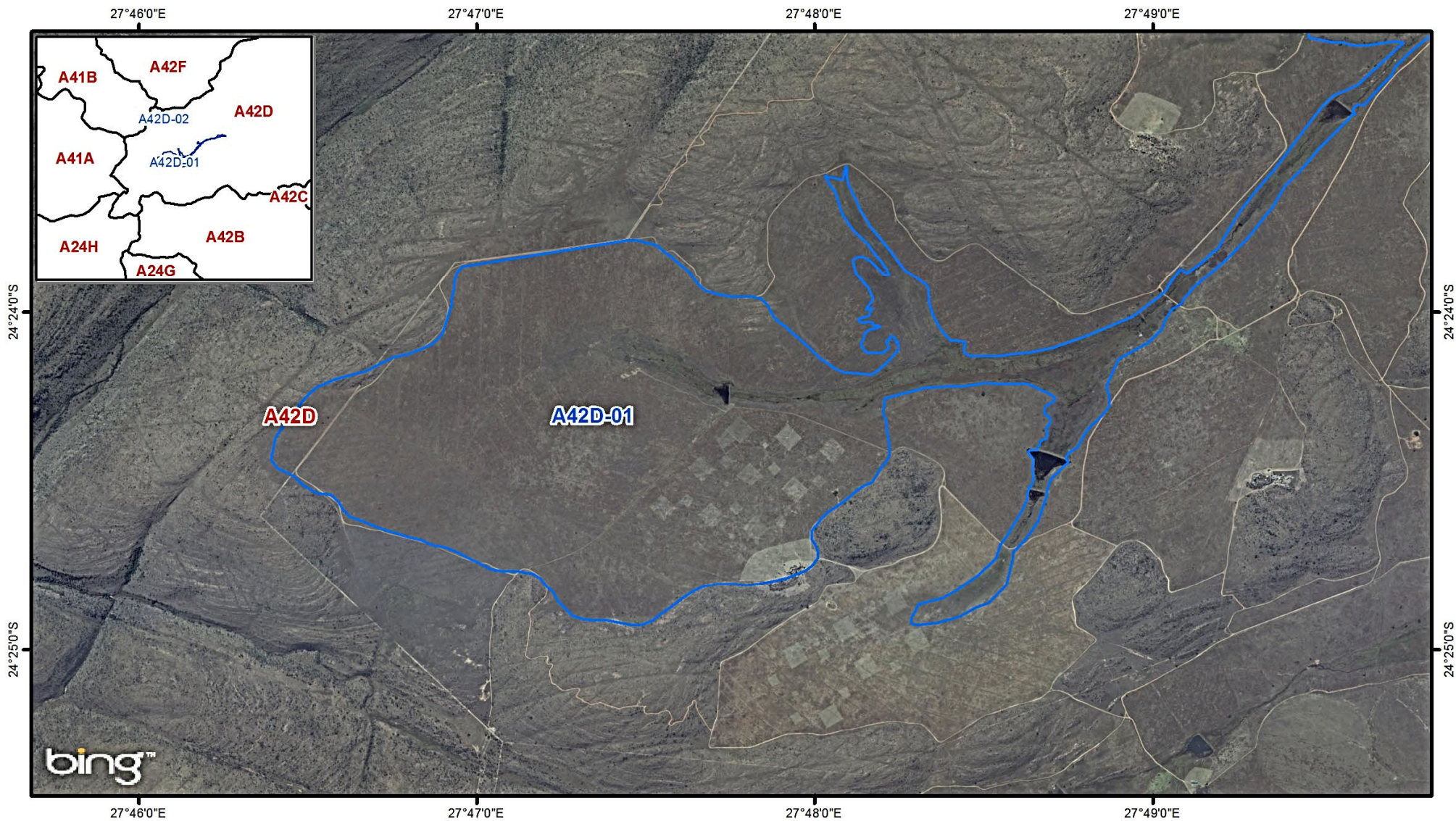


Co ordinate system : Geographic  
Datum : WGS84

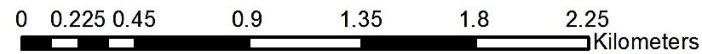
Mpumalanga - Kruger National Park - X24B-01 - Site 13 - Seep catchment - m01

1:25,000





- Quaternary Boundary
- Wetlands

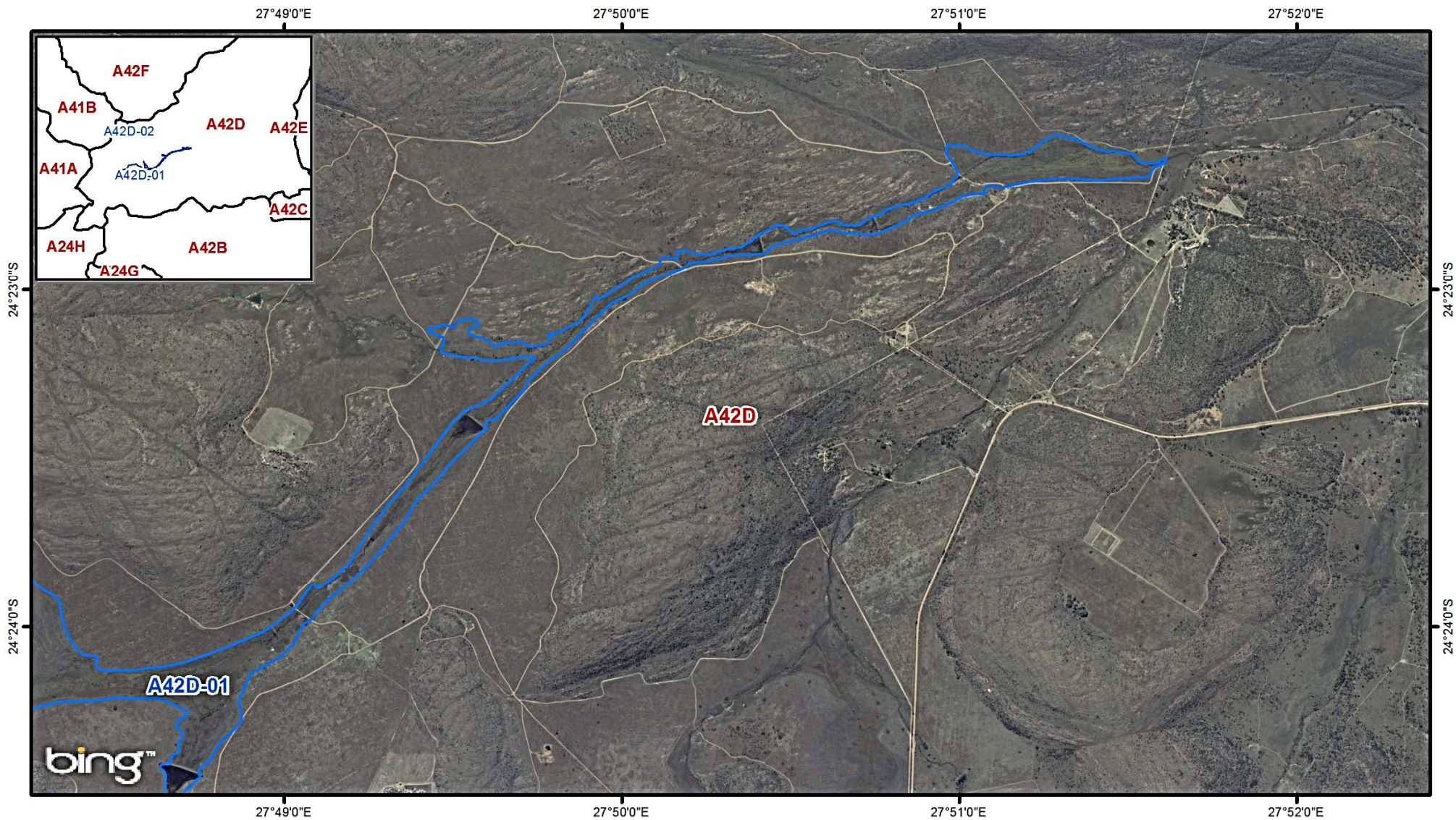


Co ordinate system : Geographic  
Datum : WGS84

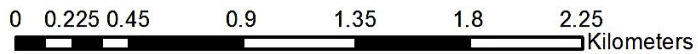
Limpopo - Waterberg - A42D-01 - Welgevonden - Pitse - m01

1:40,000





- Quaternary Boundary
- Wetlands



Co ordinate system : Geographic  
 Datum : WGS84

Limpopo - Waterberg - A42D-01 - Welgevonden - Pitse - m02

1:40,000



24°21'0"S

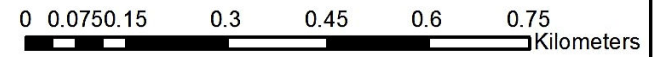


27°47'0"E

27°47'0"E

24°21'0"S

-  Quaternary Boundary
-  Wetlands



Co ordinate system : Geographic  
 Datum : WGS84



Limpopo - Waterberg - A42D-02 - Oli-gat - m01

1:15,000





Quaternary Boundary  
 Wetlands

N  
  
 0 0.05 0.1 0.2 0.3 0.4 0.5 Kilometers  




Co ordinate system : Geographic  
 Datum : WGS84

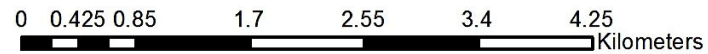
**Limpopo - Waterberg - A42D-03 - Kobus-se-pad - m01**

1:10,000





-  Quaternary Boundary
-  Wetlands

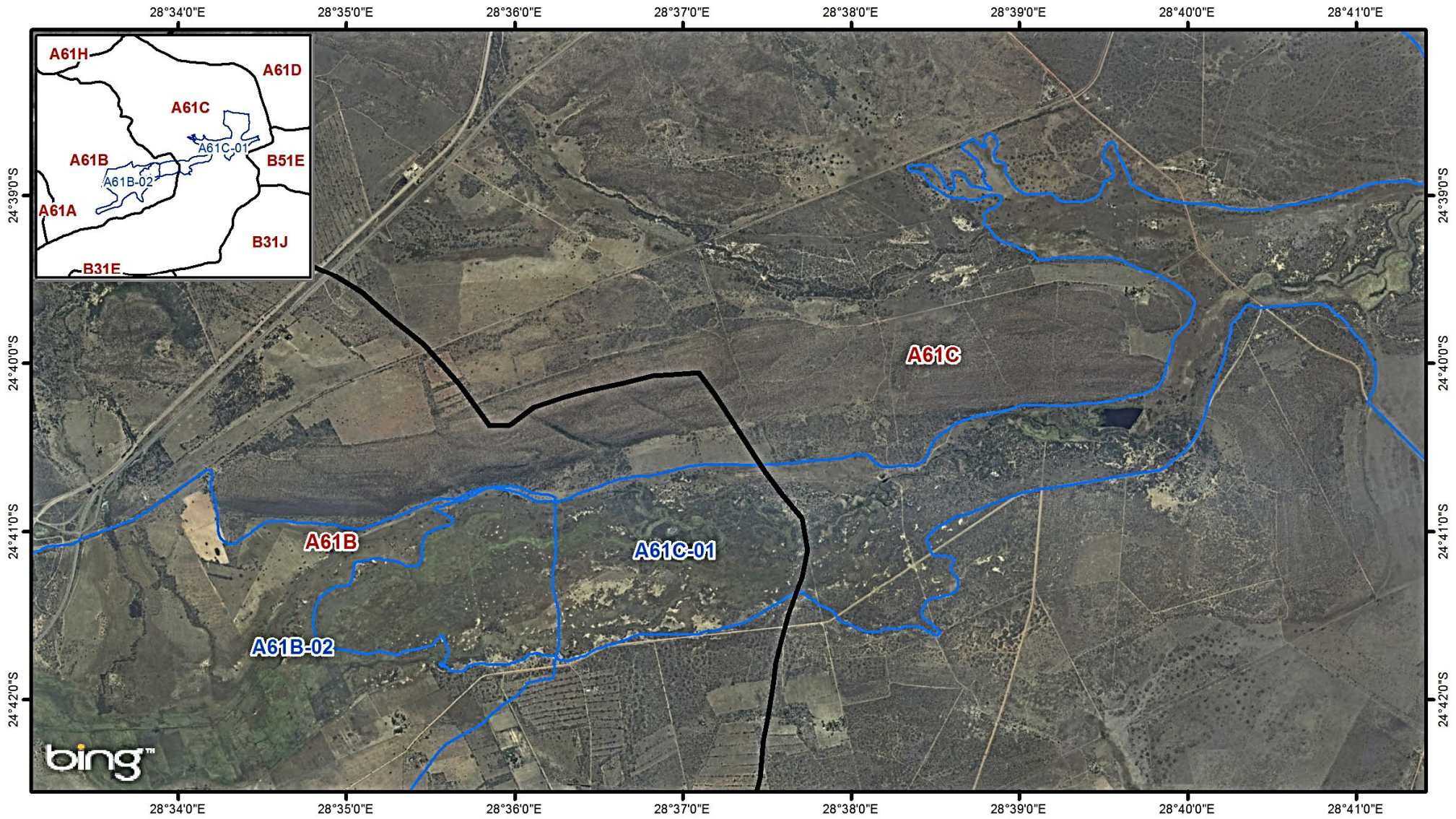


Co ordinate system : Geographic  
Datum : WGS84

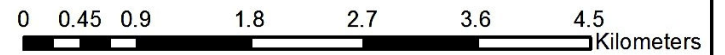
Limpopo - Waterberg - A61B-02 - Upper Nyl - m01

1:75,000





- Quaternary Boundary
- Wetlands

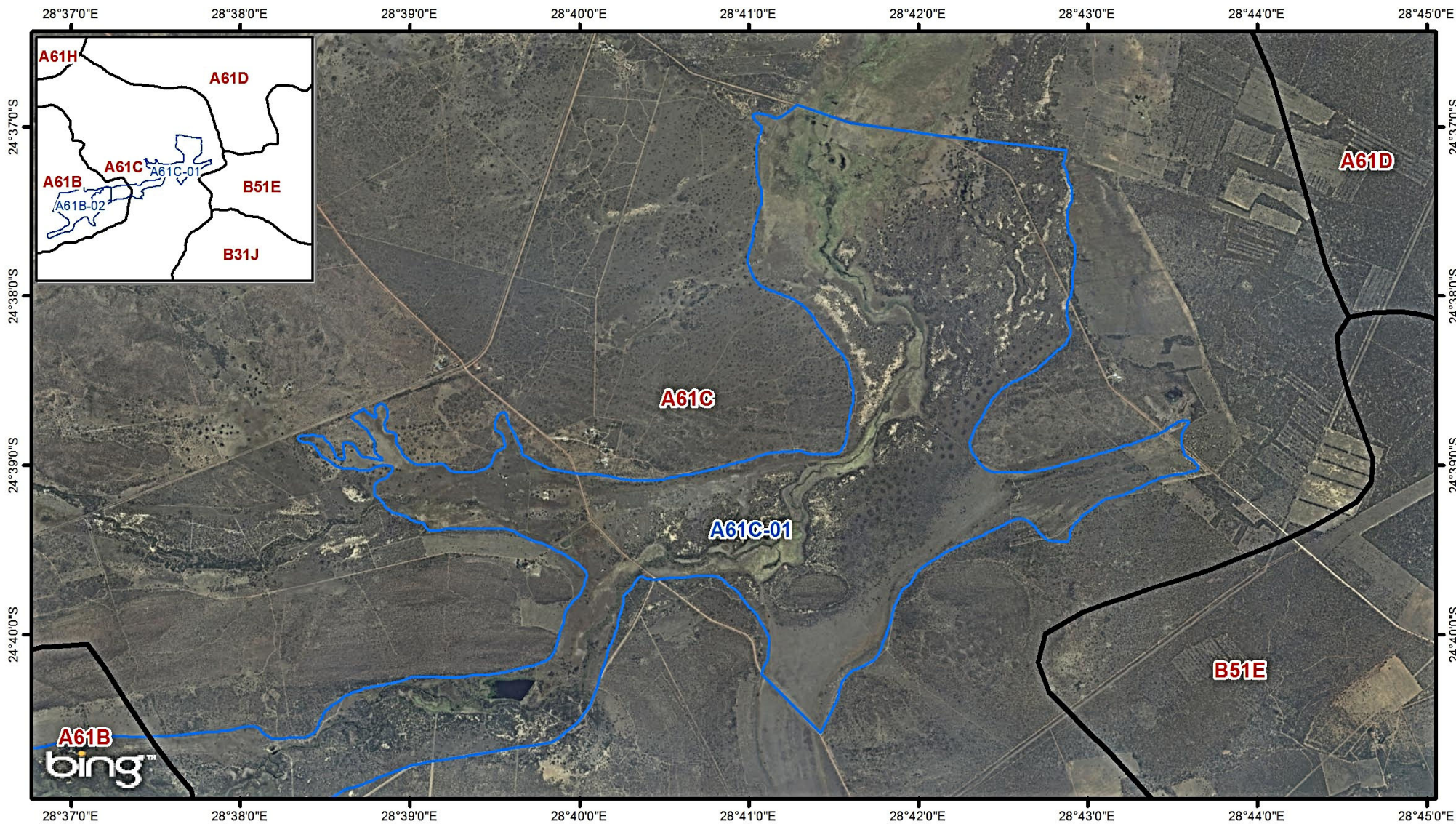


Co ordinate system : Geographic  
Datum : WGS84

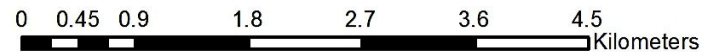
Limpopo - Waterberg - A61C-01 - Nylsvlei Boekenhout - m01

1:80,000





- Quaternary Boundary
- Wetlands

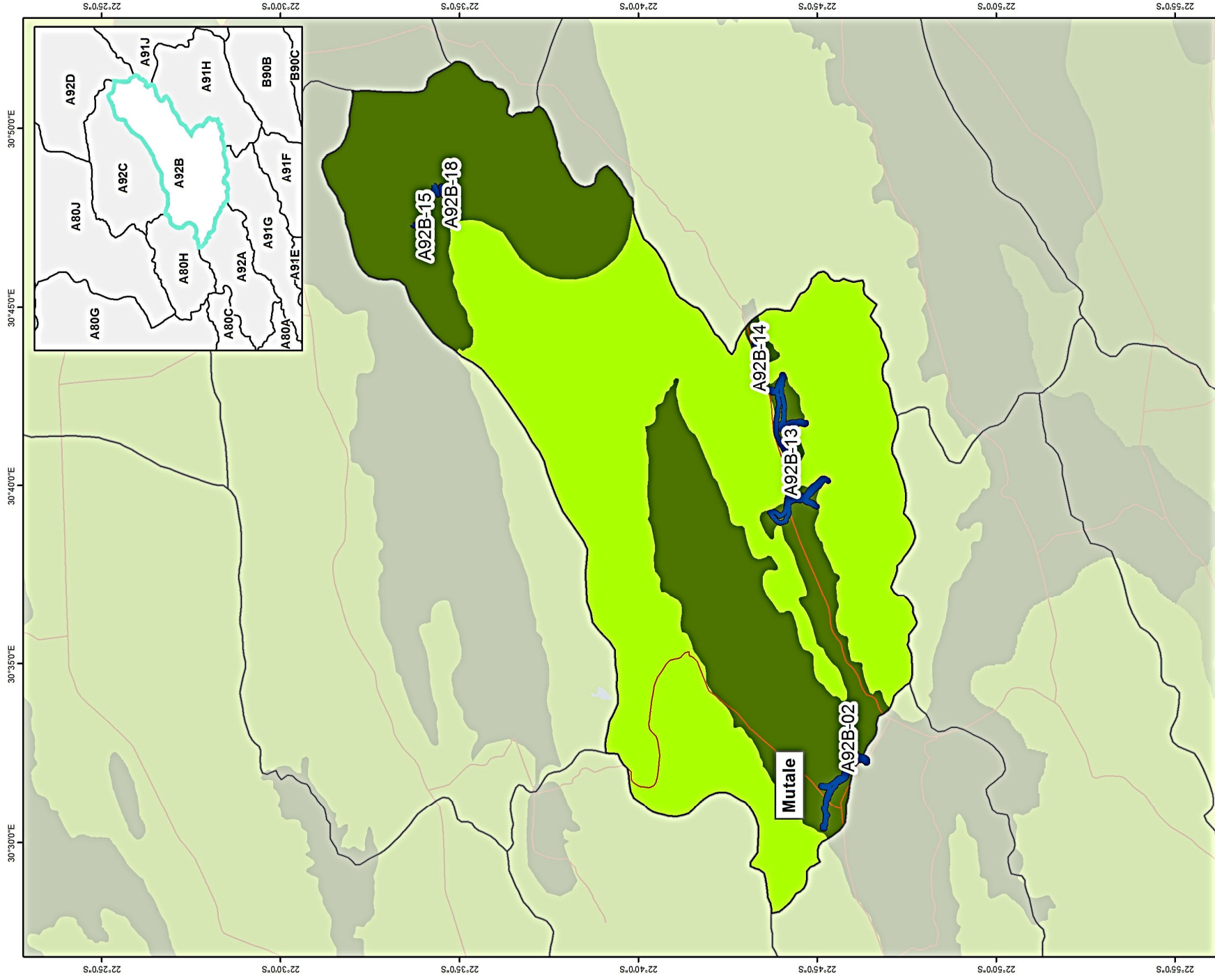


Co ordinate system : Geographic  
Datum : WGS84













Limpopo - Waterberg - A61C-01 - Nylsvlei Boekenhout - m02

1:80,000





### Legend

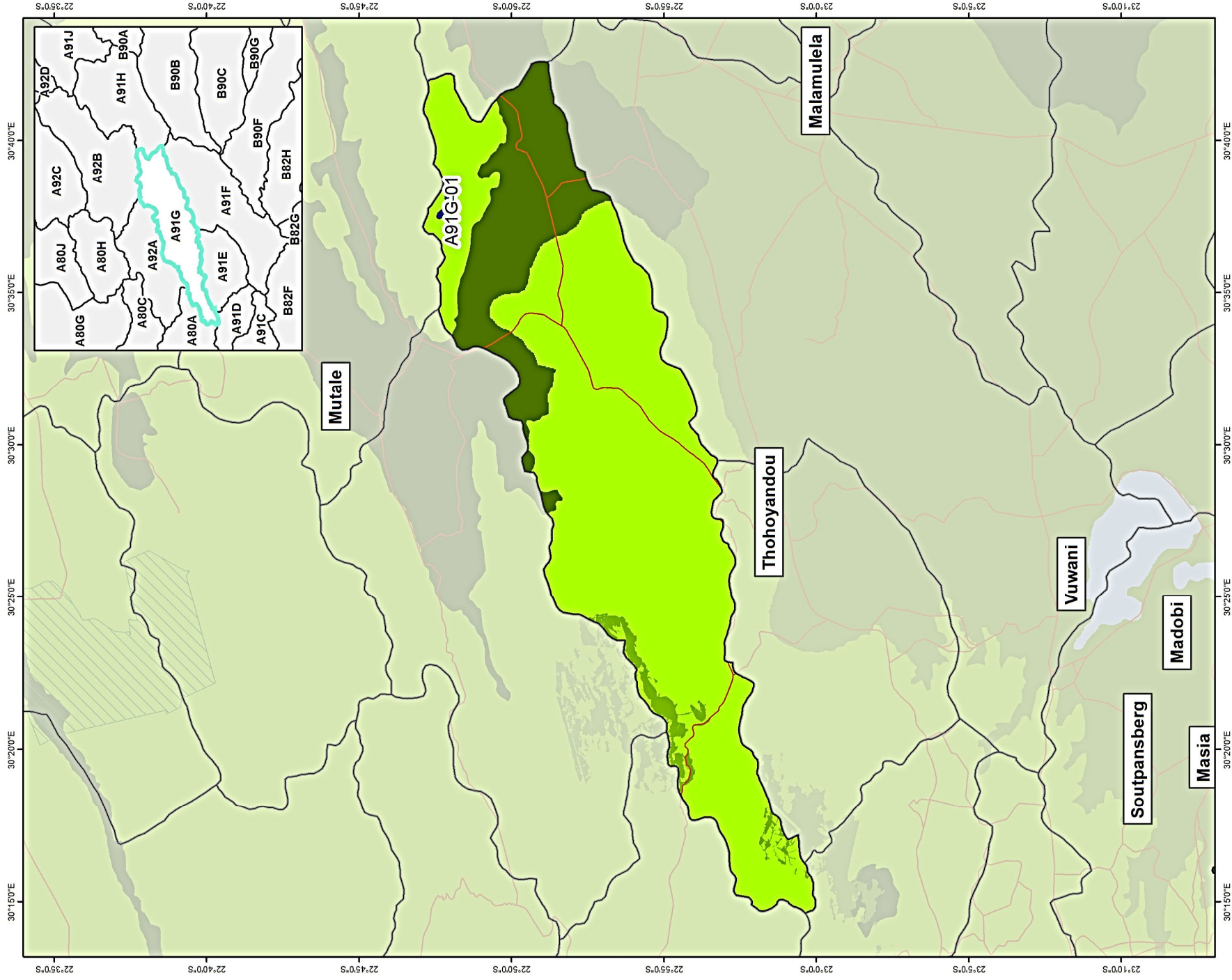
-  Wetland
  -  Protected areas
  -  Quaternary boundary
  -  CBA (terrestrial)
  -  Roads
  -  CBA (aquatic)
- | Ecosystem protection level  |                      | Ecosystems threat status  |                       |  |
|---|----------------------|---|-----------------------|--|
|  | Well protected       |  | Vulnerable            |  |
|  | Moderately protected |  | Endangered            |  |
|  | Poorly protected     |  | Critically endangered |  |

Coordinate system : Geographic  
Datum : WGS84













### Limpopo - Mutale - A92B

1:257,120





**Legend**

-  Wetland
-  Quaternary boundary
-  Roads
-  Protected areas
-  CBA (terrestrial)
-  CBA (aquatic)
-  Well protected
-  Moderately protected
-  Poorly protected
-  Vulnerable
-  Endangered
-  Critically endangered

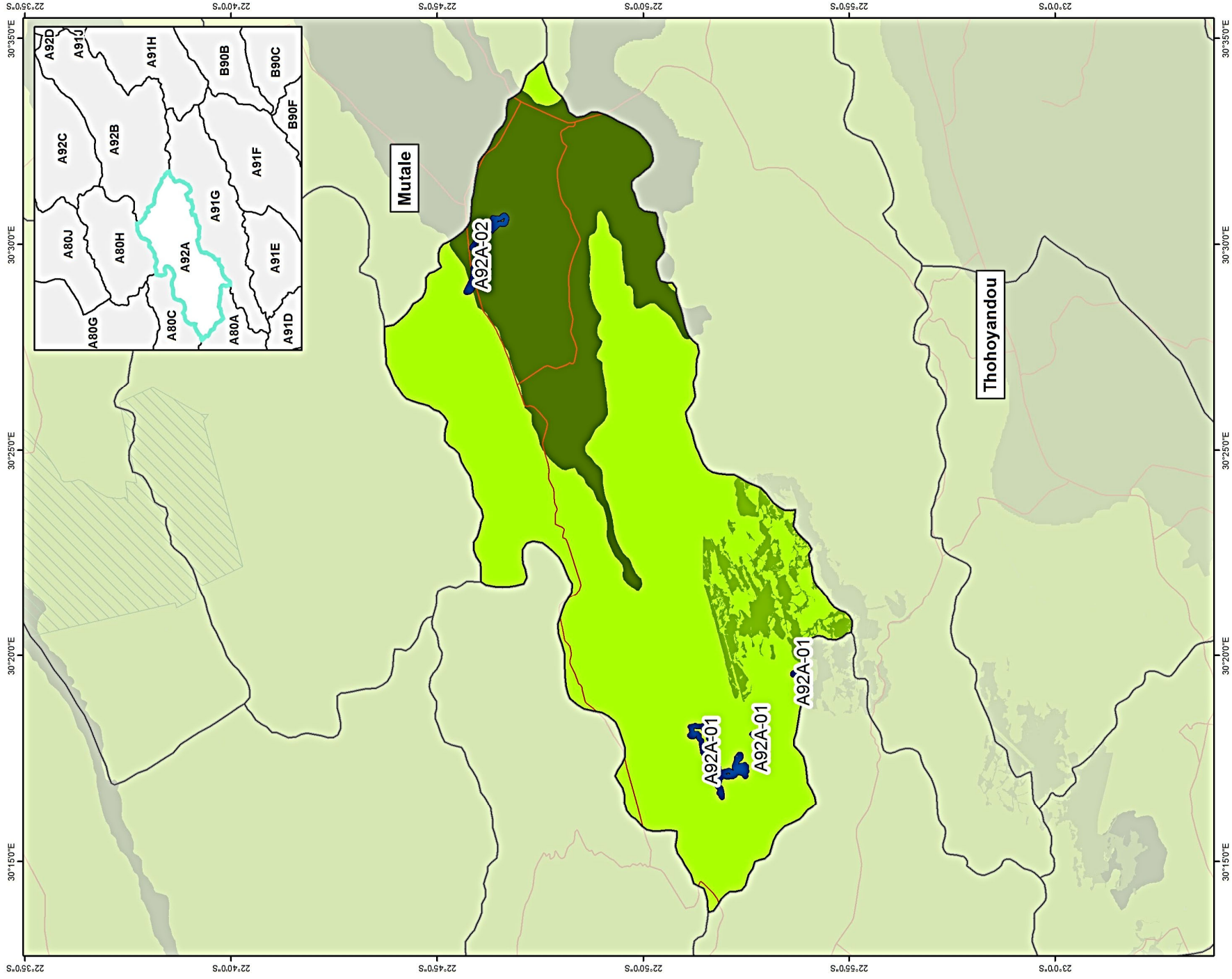


Coordinate system : Geographic  
Datum : WGS84

**Limpopo - Mutale - A91G**

1:301,060





**Legend**

- Wetland
- Quaternary boundary
- Roads
- Protected areas
  - CBA (terrestrial)
  - CBA (aquatic)
- Ecosystem protection level**
  - Well protected
  - Moderately protected
  - Poorly protected
- Ecosystems threat status**
  - Vulnerable
  - Endangered
  - Critically endangered

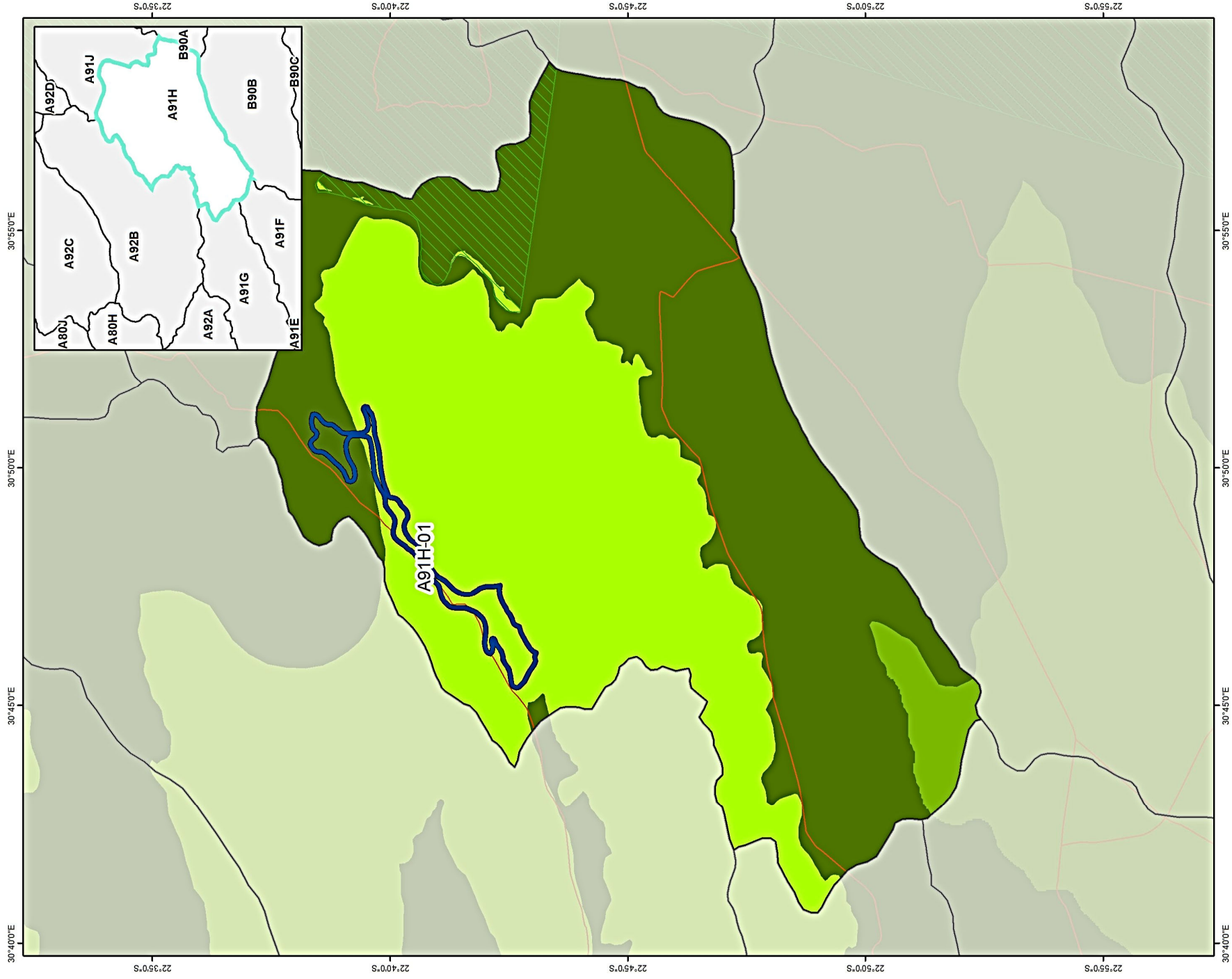
Coordinate system : Geographic  
Datum : WGS84

**Limpopo - Mutale - A92A**

1:222,920







**Legend**

- Wetland
- Quaternary boundary
- Roads
- Protected areas
- CBA (terrestrial)
- CBA (aquatic)

- Well protected
- Moderately protected
- Poorly protected

- Vulnerable
- Endangered
- Critically endangered



Coordinate system : Geographic  
Datum : WGS84

**Limpopo - Mutale - A91H**

1:193,240