













Legend

-  Wetland
-  Quaternary boundary
-  Roads
-  Protected areas
-  CBA (terrestrial)
-  CBA (aquatic)
-  Well protected
-  Moderately protected
-  Poorly protected
-  Vulnerable
-  Endangered
-  Critically endangered



Coordinate system : Geographic
Datum : WGS84

Northern Cape - Kamiesberg - F50E

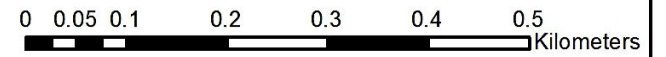
1:174,890

30°19'0"S



30°19'0"S

-  Quaternary Boundary
-  Wetlands





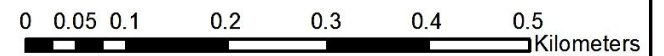
Co ordinate system : Geographic
Datum : WGS84

Northern Cape - Kamiesberg - F30A-03 - Kleikop - m01

1:10,000



-  Quaternary Boundary
-  Wetlands



Co ordinate system : Geographic
Datum : WGS84

Northern Cape - Kamiesberg - F30A-04 - Kleikop - m01

1:10,000

30°19'0"S



18°6'0"E

18°6'0"E

30°19'0"S

Quaternary Boundary
 Wetlands

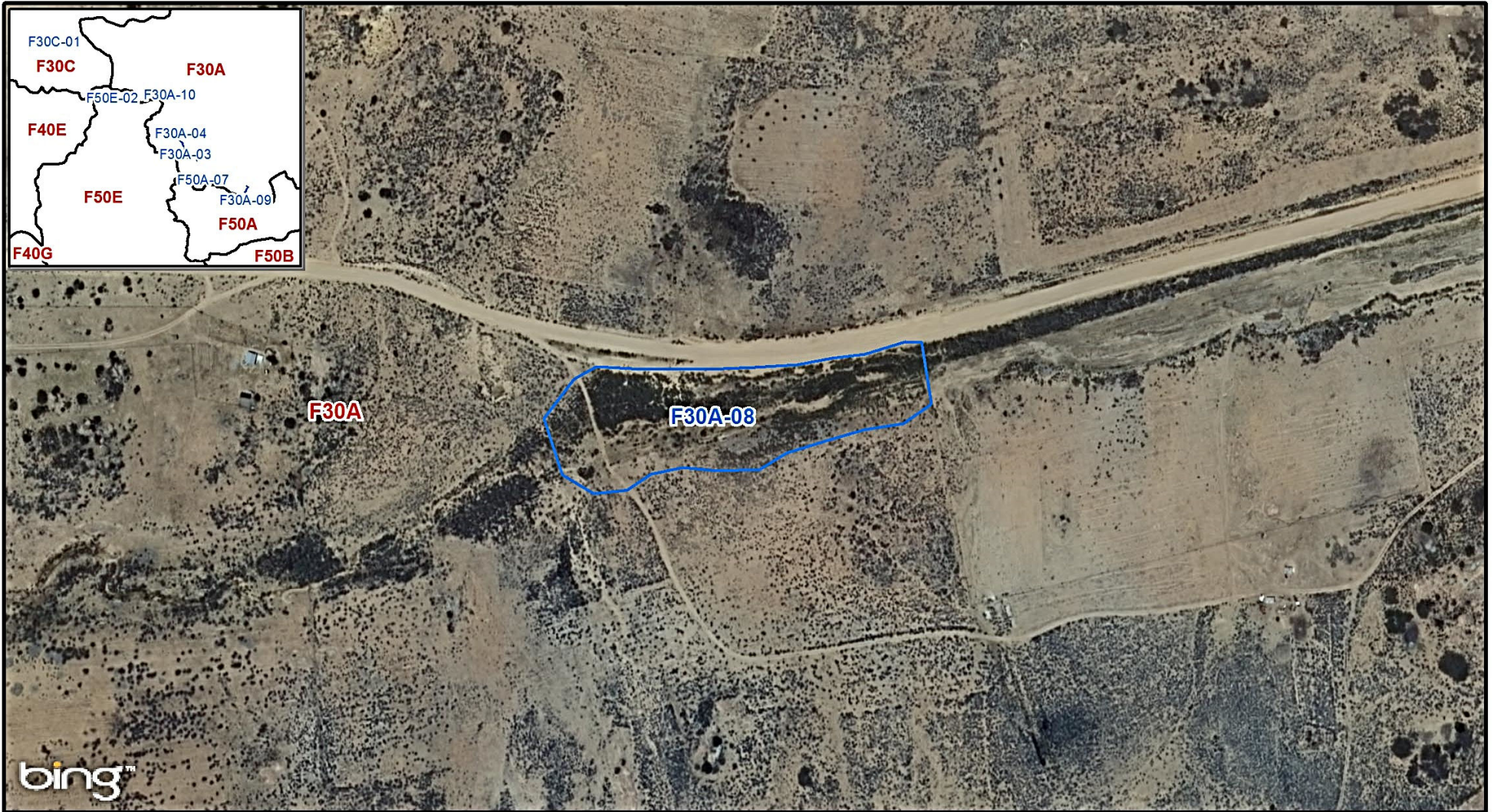


0 0.05 0.1 0.2 0.3 0.4 0.5
 Kilometers

Co ordinate system : Geographic
 Datum : WGS84

Northern Cape - Kamiesberg - F30A-06 - Schaaprivier 3 - m01

1:10,000



Quaternary Boundary
 Wetlands

0 0.0275 0.055 0.11 0.165 0.22 0.275 Kilometers

Co ordinate system : Geographic
 Datum : WGS84

Northern Cape - Kamiesberg - F30A-08 - Langvlei - m01

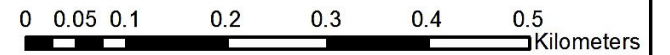
1:5,000

30°21'0"S



30°21'0"S

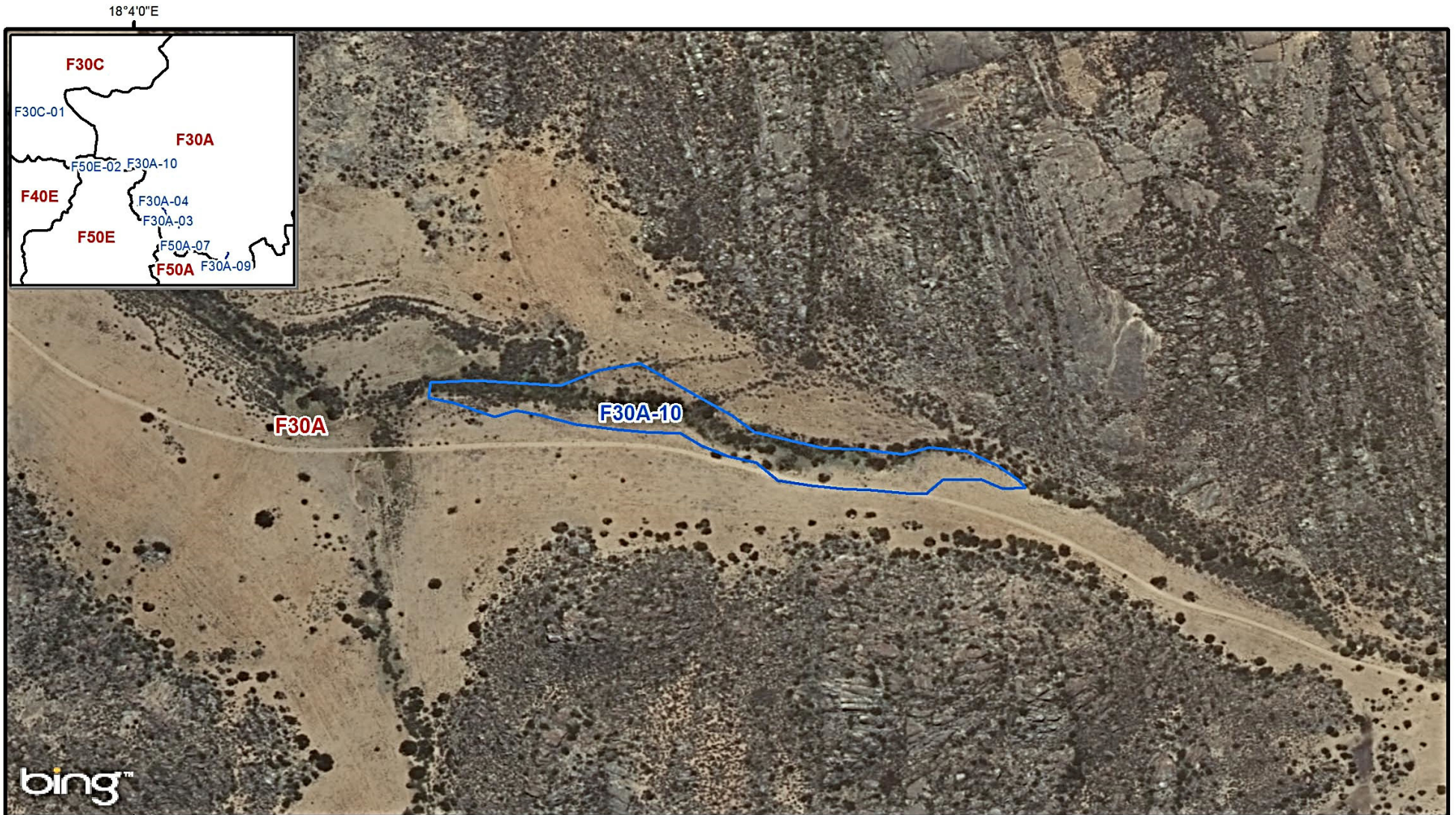
-  Quaternary Boundary
-  Wetlands



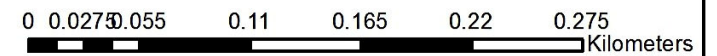
Co ordinate system : Geographic
Datum : WGS84

Northern Cape - Kamiesberg - F30A-09 - Natpad 5 - m01

1:10,000



-  Quaternary Boundary
-  Wetlands

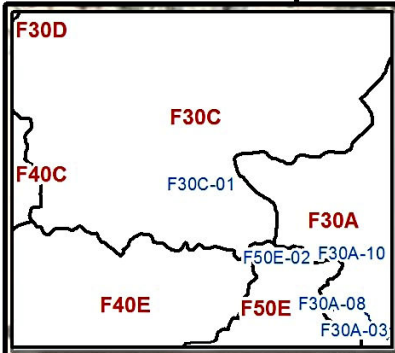


Co ordinate system : Geographic
Datum : WGS84

Northern Cape - Kamiesberg - F30A-10 - Windpoort - m01

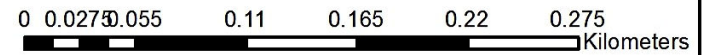
1:5,000

17°56'0"E



17°56'0"E

-  Quaternary Boundary
-  Wetlands





Co ordinate system : Geographic
Datum : WGS84

Northern Cape - Kamiesberg - F30C-01 - Kleingas - m01

1:5,000



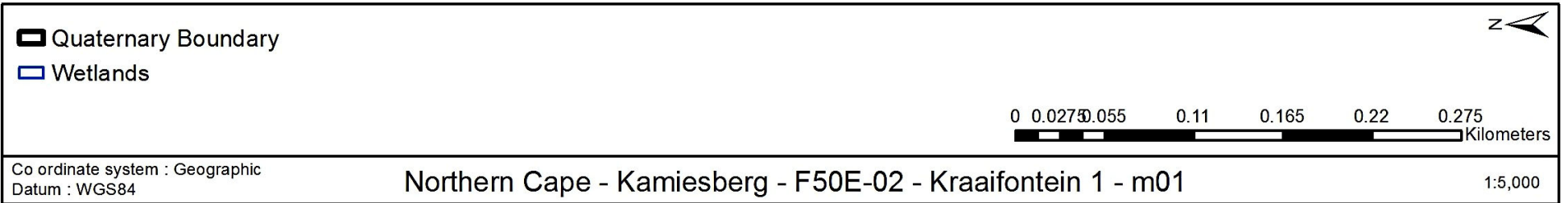
Quaternary Boundary
 Wetlands

N

 0 0.075 0.15 0.3 0.45 0.6 0.75 Kilometers


Co ordinate system : Geographic
 Datum : WGS84

Northern Cape - Kamiesberg - F50A-07 - Xharas - m01

1:15,000





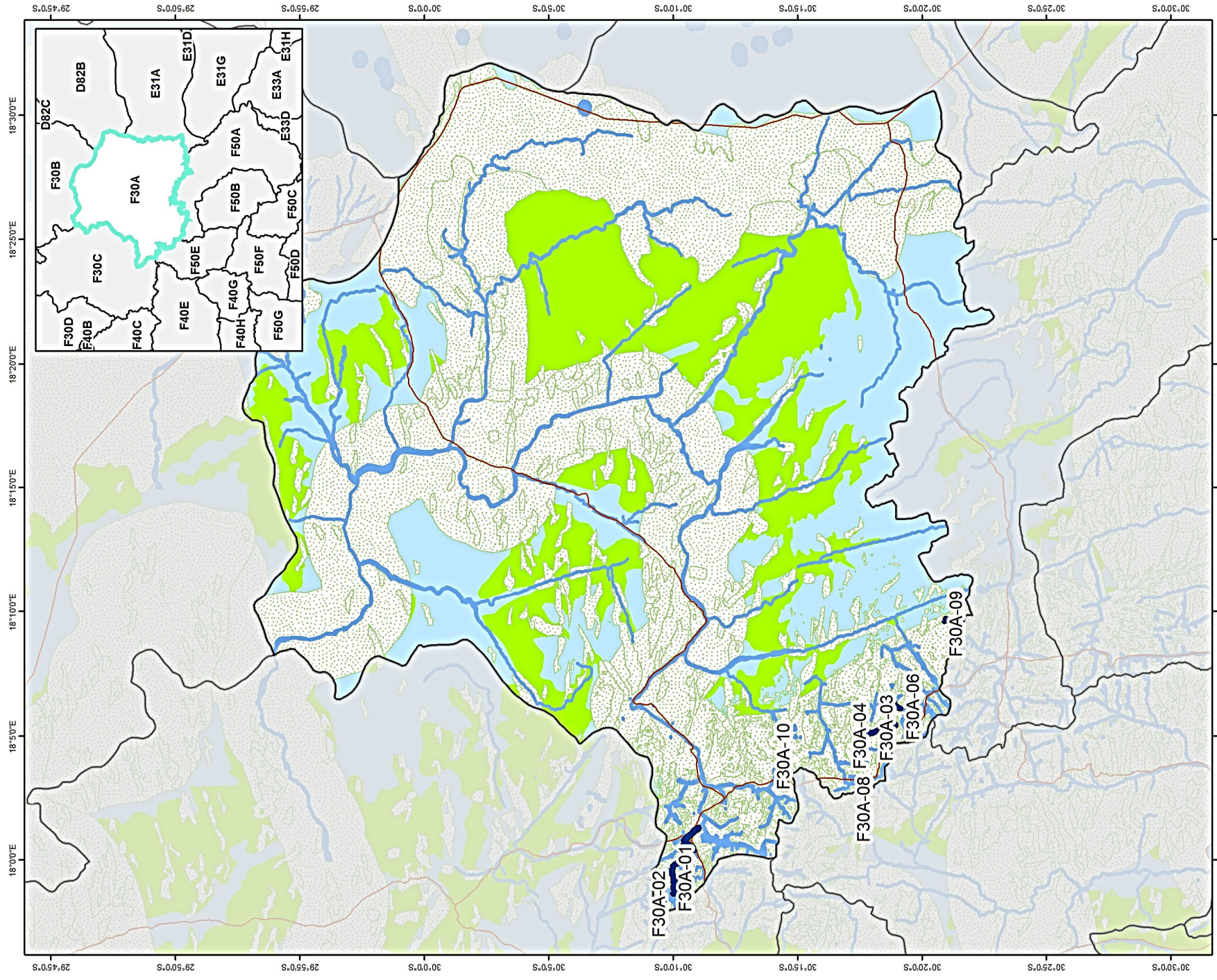
-  Quaternary Boundary
-  Wetlands



Co ordinate system : Geographic
Datum : WGS84

Northern Cape - Kamiesberg - F50G-01 - Groenrivier - m01

1:5,000



Legend

- Wetland
- Quaternary boundary
- Roads
- Protected areas
- CBA (terrestrial)
- CBA (aquatic)

- Ecosystem protection level**
- Well protected
 - Moderately protected
 - Poorly protected

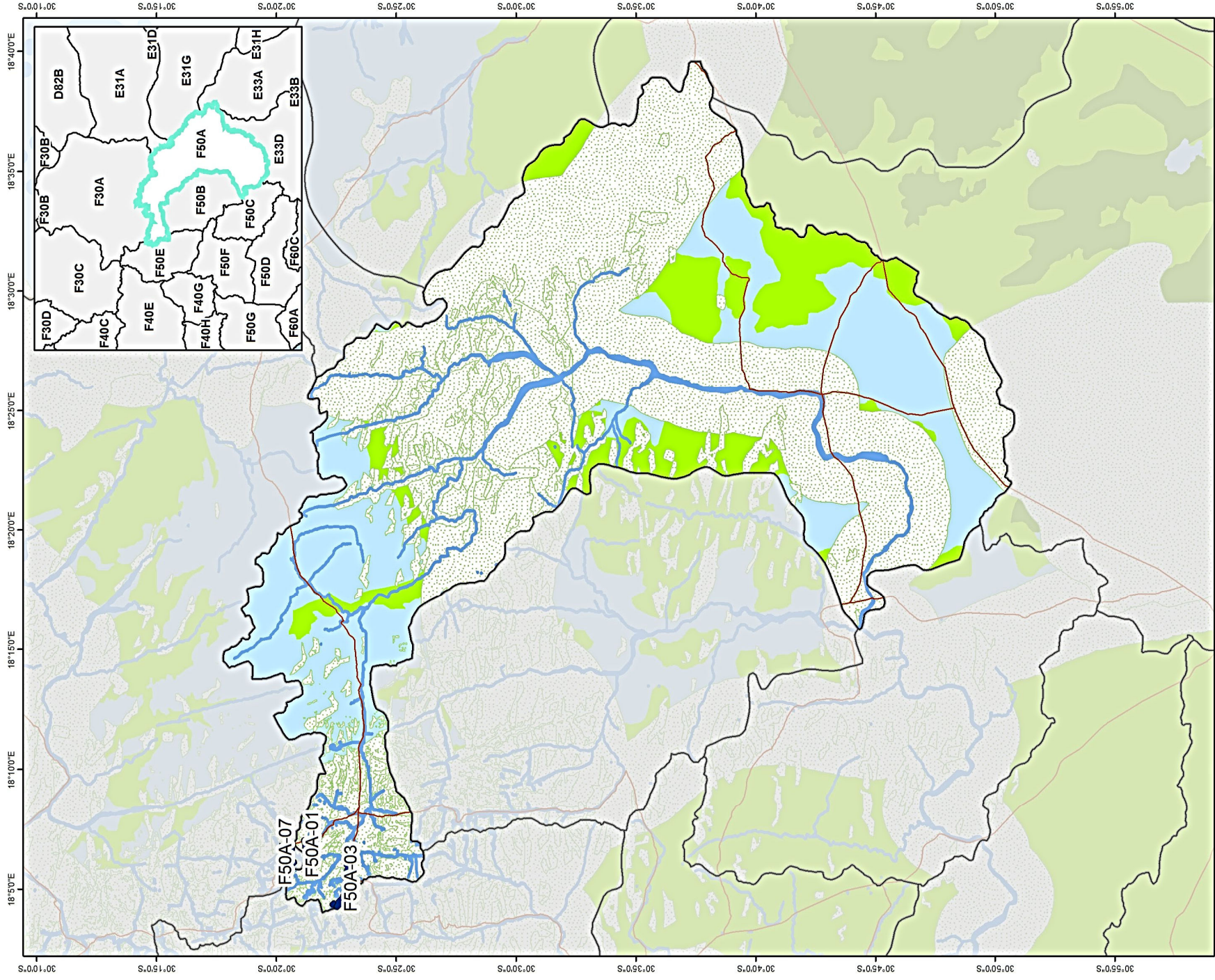
- Ecosystems threat status**
- Vulnerable
 - Endangered
 - Critically endangered

Coordinate system : Geographic
Datum : WGS84

Northern Cape - Kamiesberg - F30A

1:368,180





Legend

- Wetland
- Quaternary boundary
- Roads
- Protected areas
- CBA (terrestrial)
- CBA (aquatic)

- Well protected
- Moderately protected
- Poorly protected

- Vulnerable
- Endangered
- Critically endangered

- N

Coordinate system : Geographic
Datum : WGS84

Northern Cape - Kamiesberg - F50A

1:383,500