

Appendix A

LOCALITY MAPS

29°00'E

29°50'E

28°25'0"S

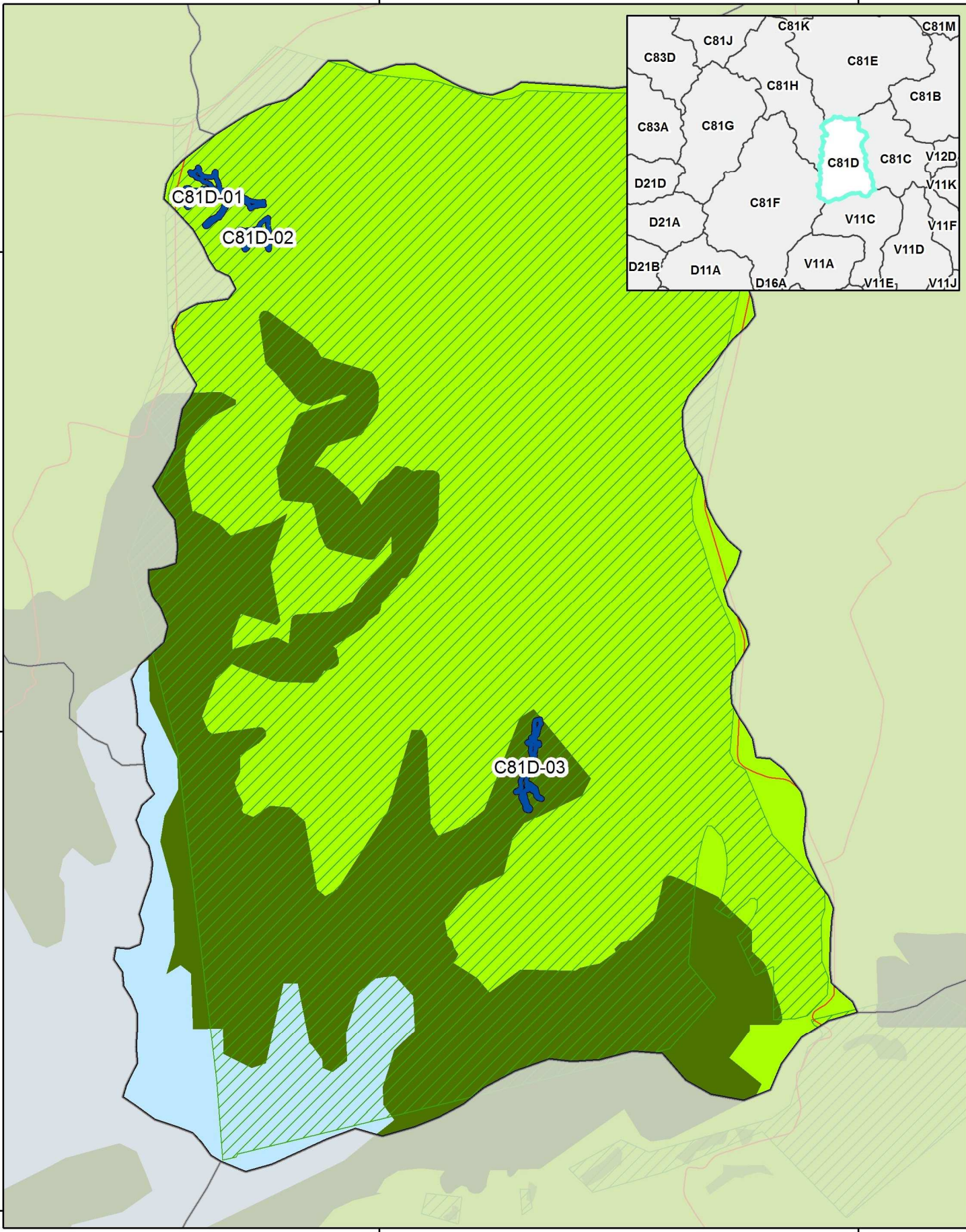
28°30'0"S

28°35'0"S

28°25'0"S

28°30'0"S

28°35'0"S



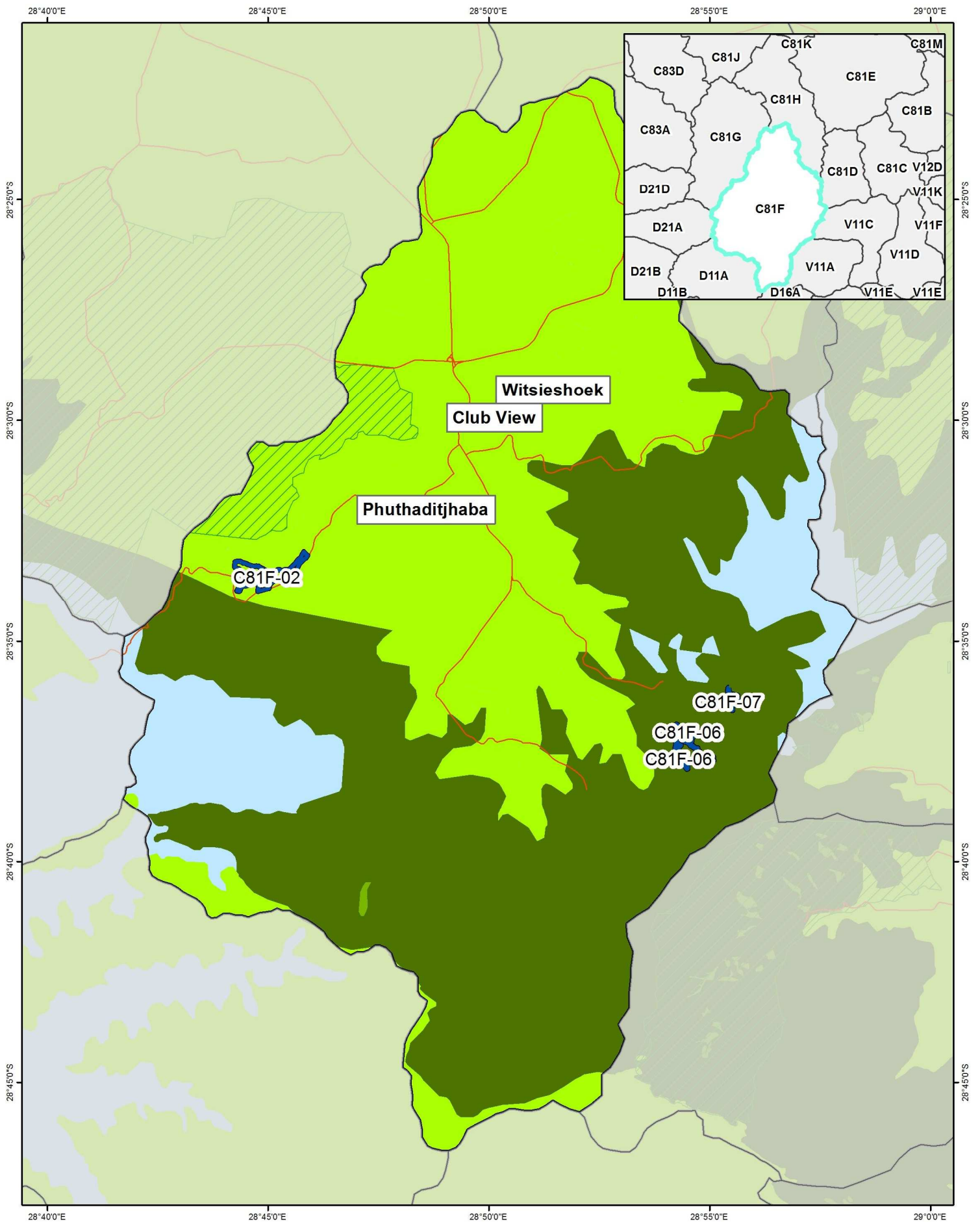
Legend			
Wetland	Protected areas	Ecosystem protection level	Ecosystems threat status
Quaternary boundary	CBA (terrestrial)	Well protected	Vulnerable
Roads	CBA (aquatic)	Moderately protected	Endangered
		Poorly protected	Critically endangered



Coordinate system : Geographic
Datum : WGS84

Free State - Maluti - C81D

1:98,520



Legend

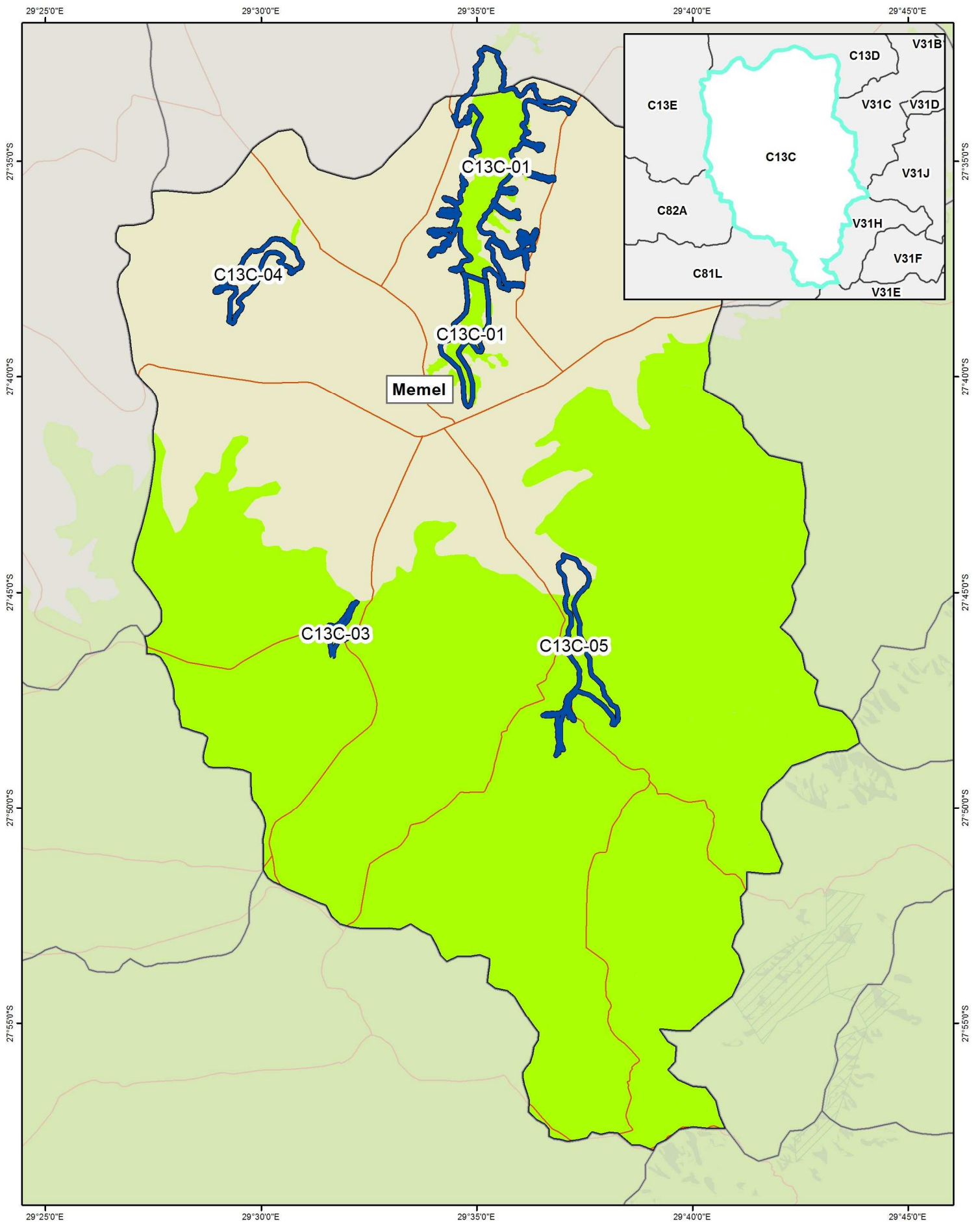
Wetland	Protected areas	Ecosystem protection level	Ecosystems threat status
Quaternary boundary	CBA (terrestrial)	Well protected	Vulnerable
Roads	CBA (aquatic)	Moderately protected	Endangered
		Poorly protected	Critically endangered



Coordinate system : Geographic
Datum : WGS84

Free State - Maluti - C81F

1:206,530



Legend

- | | | | |
|---------------------|-------------------|-----------------------------------|---------------------------------|
| Wetland | Protected areas | Ecosystem protection level | Ecosystems threat status |
| Quaternary boundary | CBA (terrestrial) | Well protected | Vulnerable |
| Roads | CBA (aquatic) | Moderately protected | Endangered |
| | | Poorly protected | Critically endangered |



Coordinate system : Geographic
Datum : WGS84

Free State - Seekoeivlei - C13C

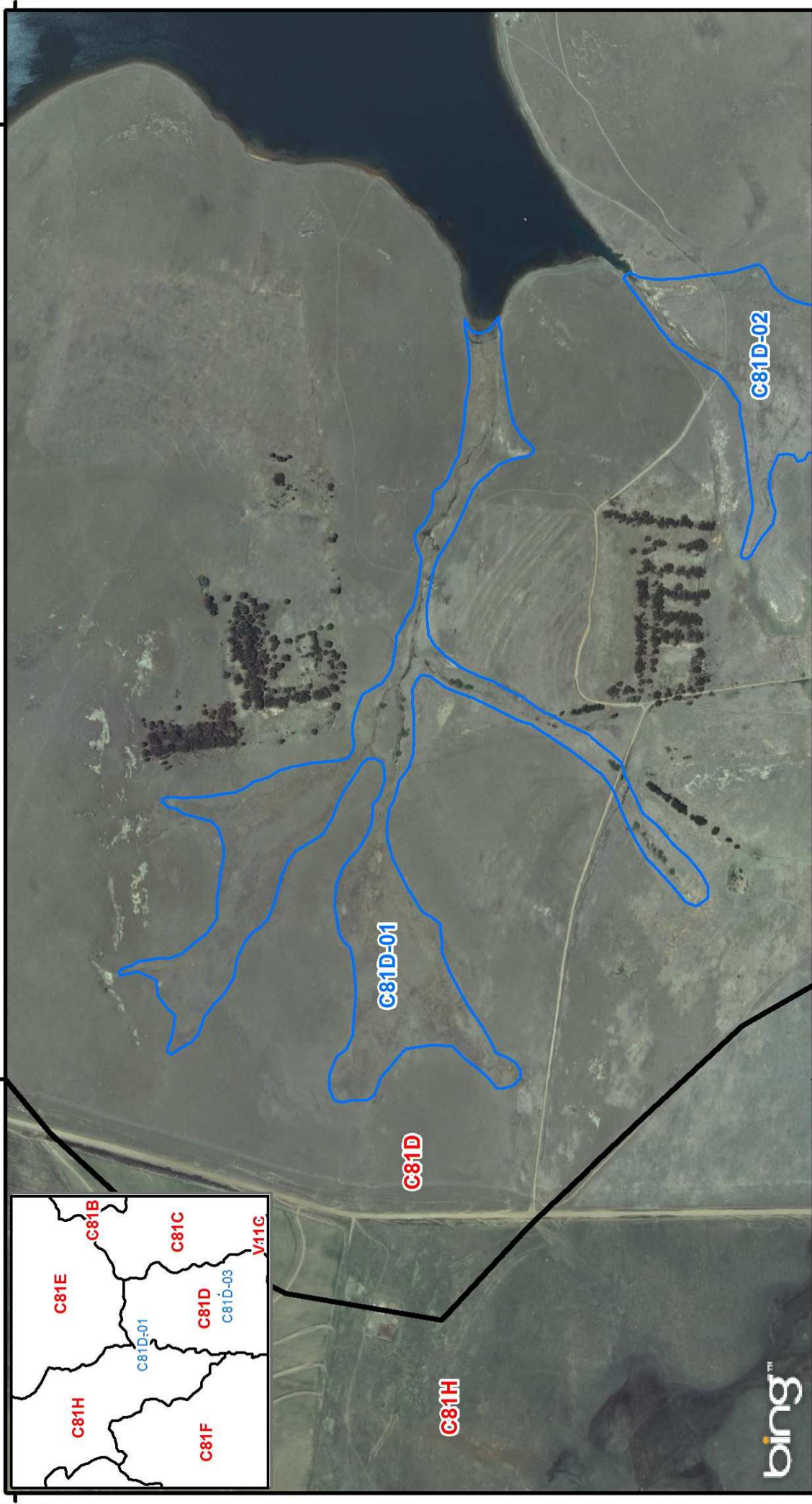
1:211,420

28°24'0"S

28°59'0"E

28°58'0"E

28°24'0"S



28°59'0"E

28°58'0"E



 Quaternary Boundary

 Wetlands



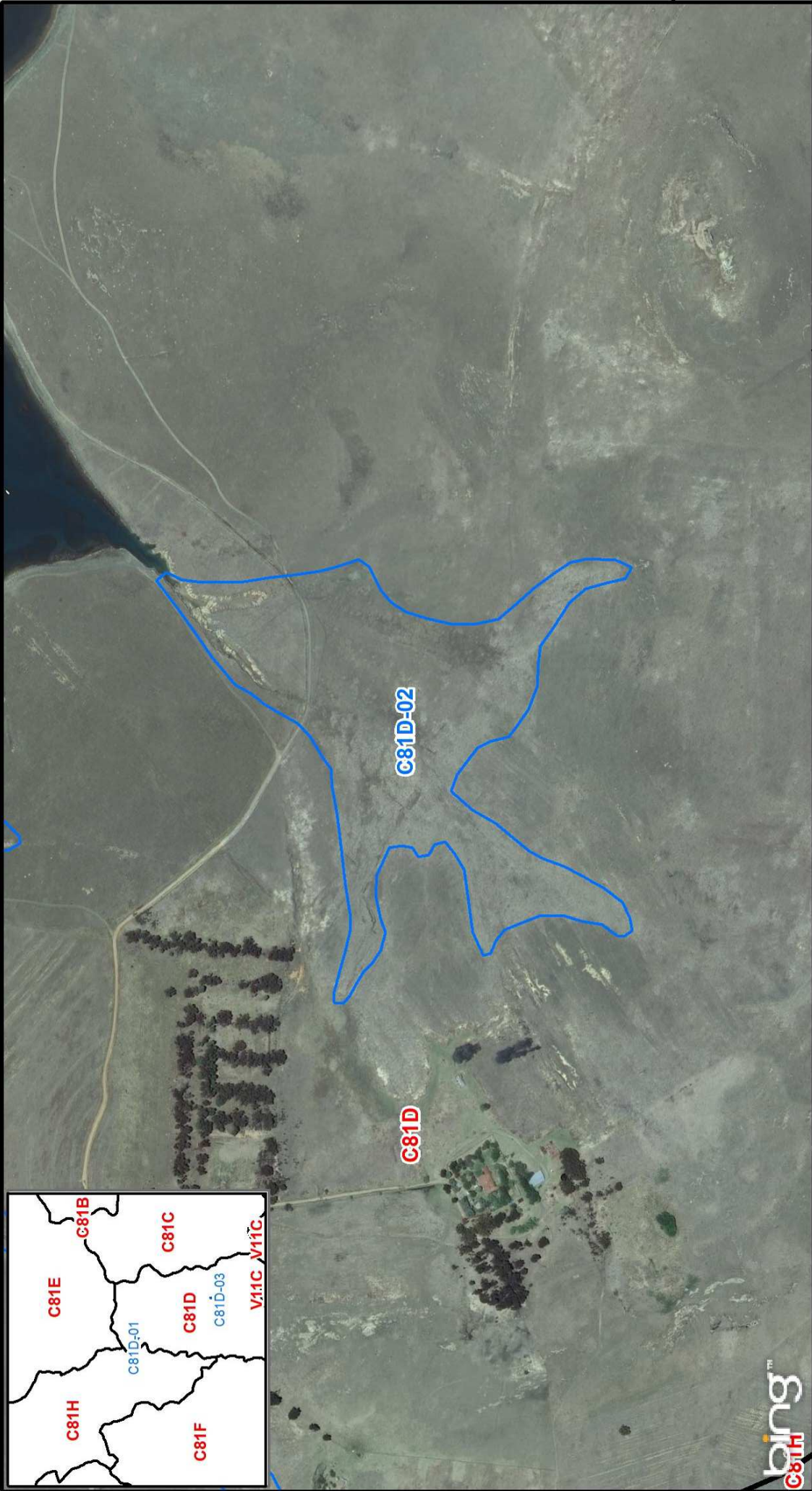
Co ordinate system : Geographic
Datum : WGS84

Free State - Maluti - C81D-01 - Escol 1 (Sterkfontein NR) - m01

1:15,000

28°59'0"E

28°25'0"S



28°25'0"S

28°59'0"E



Quaternary Boundary

Wetlands



Co ordinate system : Geographic
Datum : WGS84

Free State - Maluti - C81D-02 - Escol 2 (Sterkfontein NR) - m01

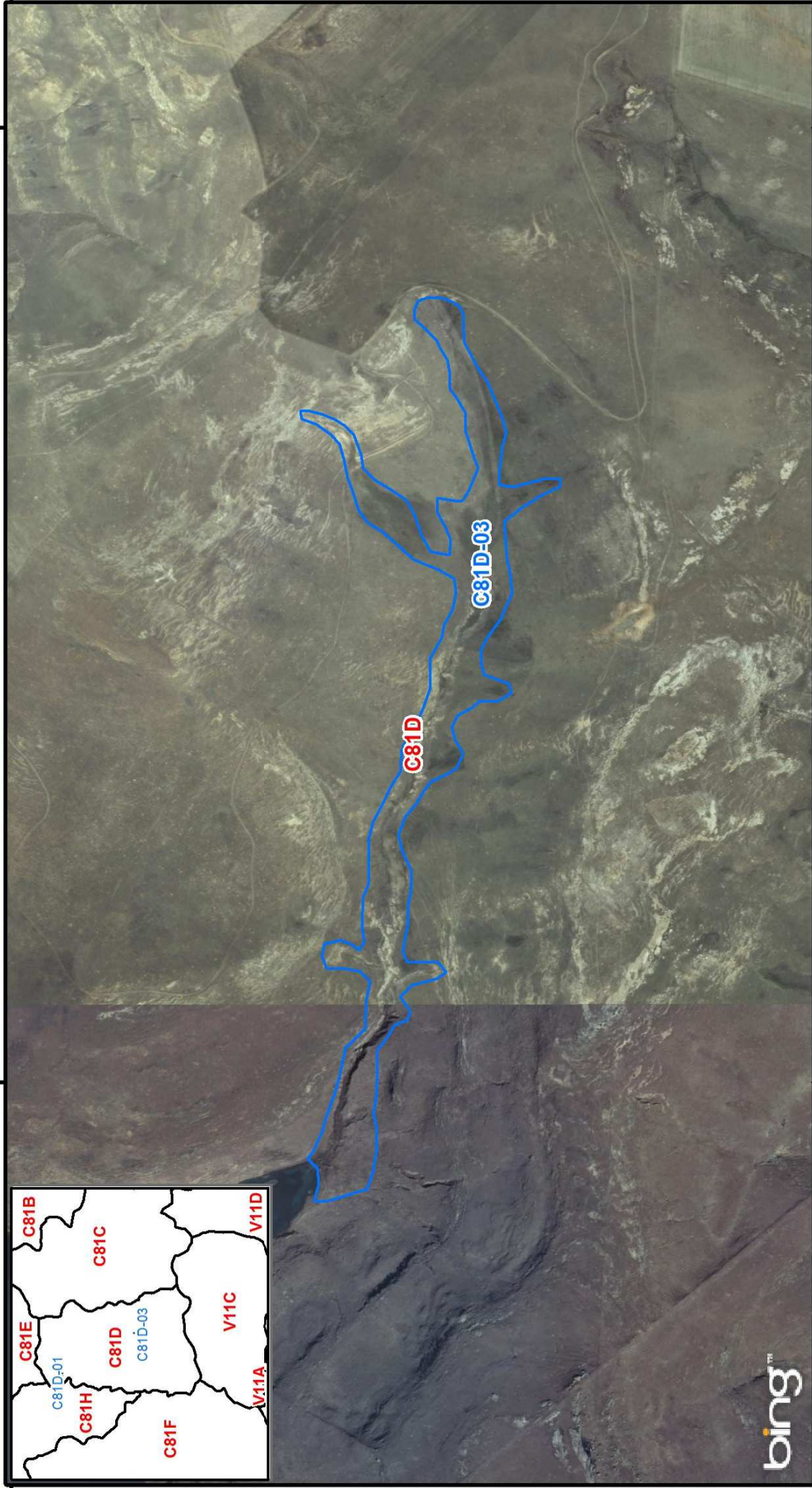
1:10,000

29°2'0"E

28°31'0"S

28°30'0"S

29°2'0"E



28°31'0"S

28°30'0"S



 Quaternary Boundary

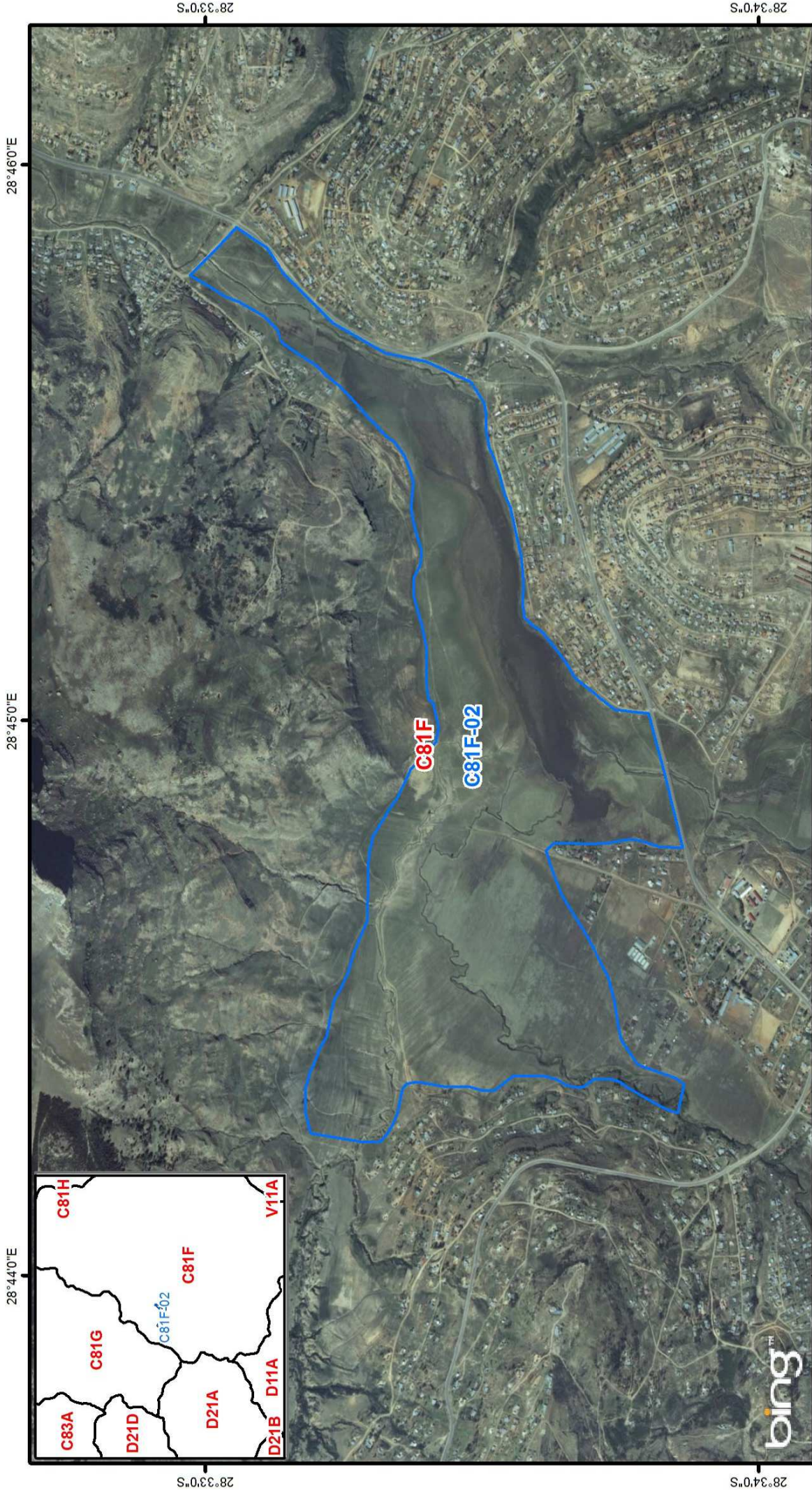
 Wetlands



Co ordinate system : Geographic
Datum : WGS84

Free State - Maluti - C81D-03 - Sterkfontein 1 - m01

1:15,000



28°44'0"E 28°45'0"E 28°46'0"E

28°34'0"S 28°33'0"S

Quaternary Boundary

Wetlands

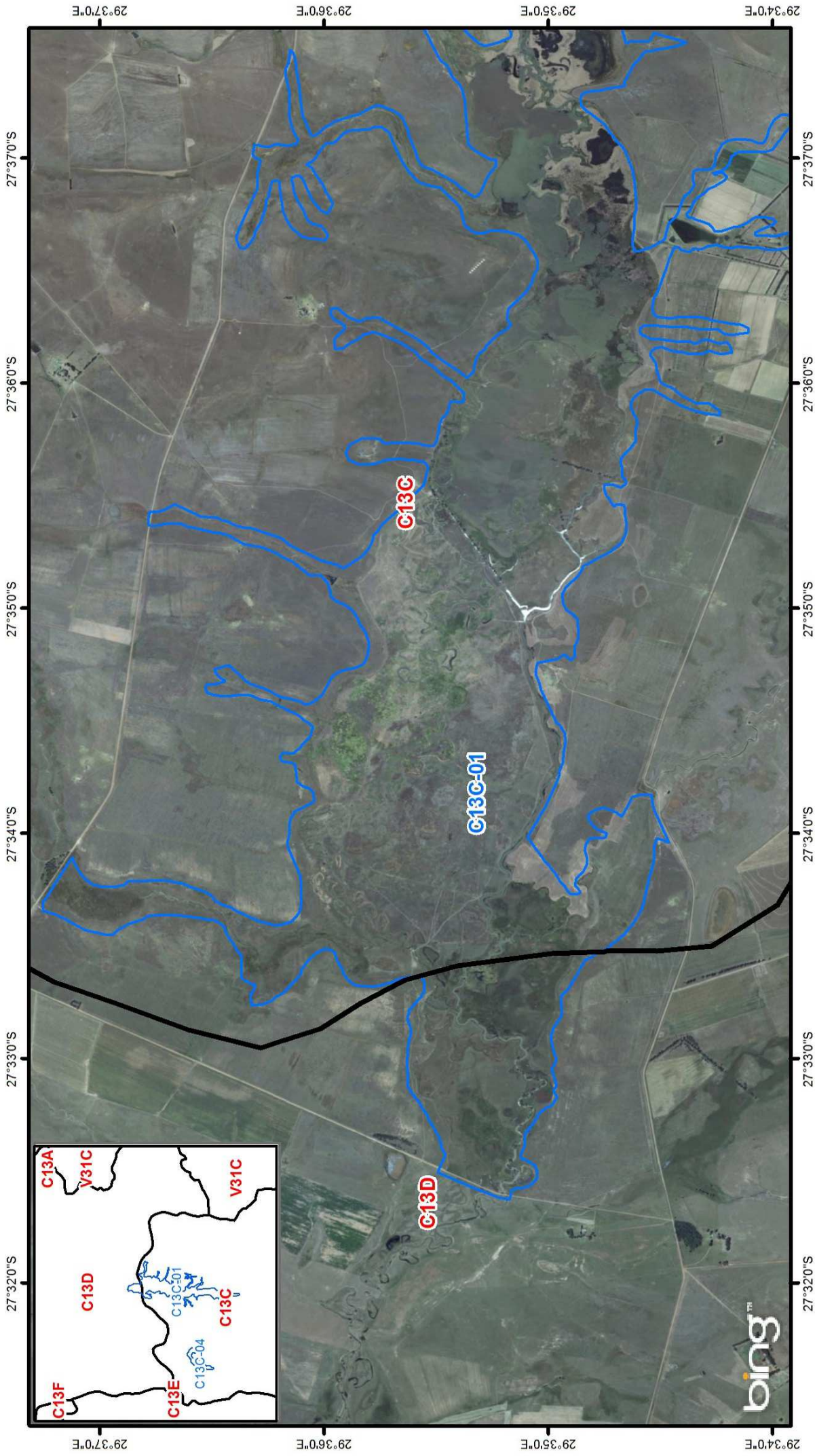
0 0.1250.25 0.5 0.75 1 1.25 Kilometers

28°44'0"E 28°45'0"E 28°46'0"E

Co ordinate system : Geographic
 Datum : WGS84

Free State - Maluti - C81F-02 - Monontsha - m01

1:25,000



Quaternary Boundary

Wetlands

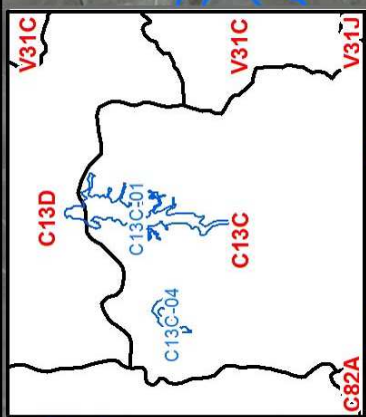
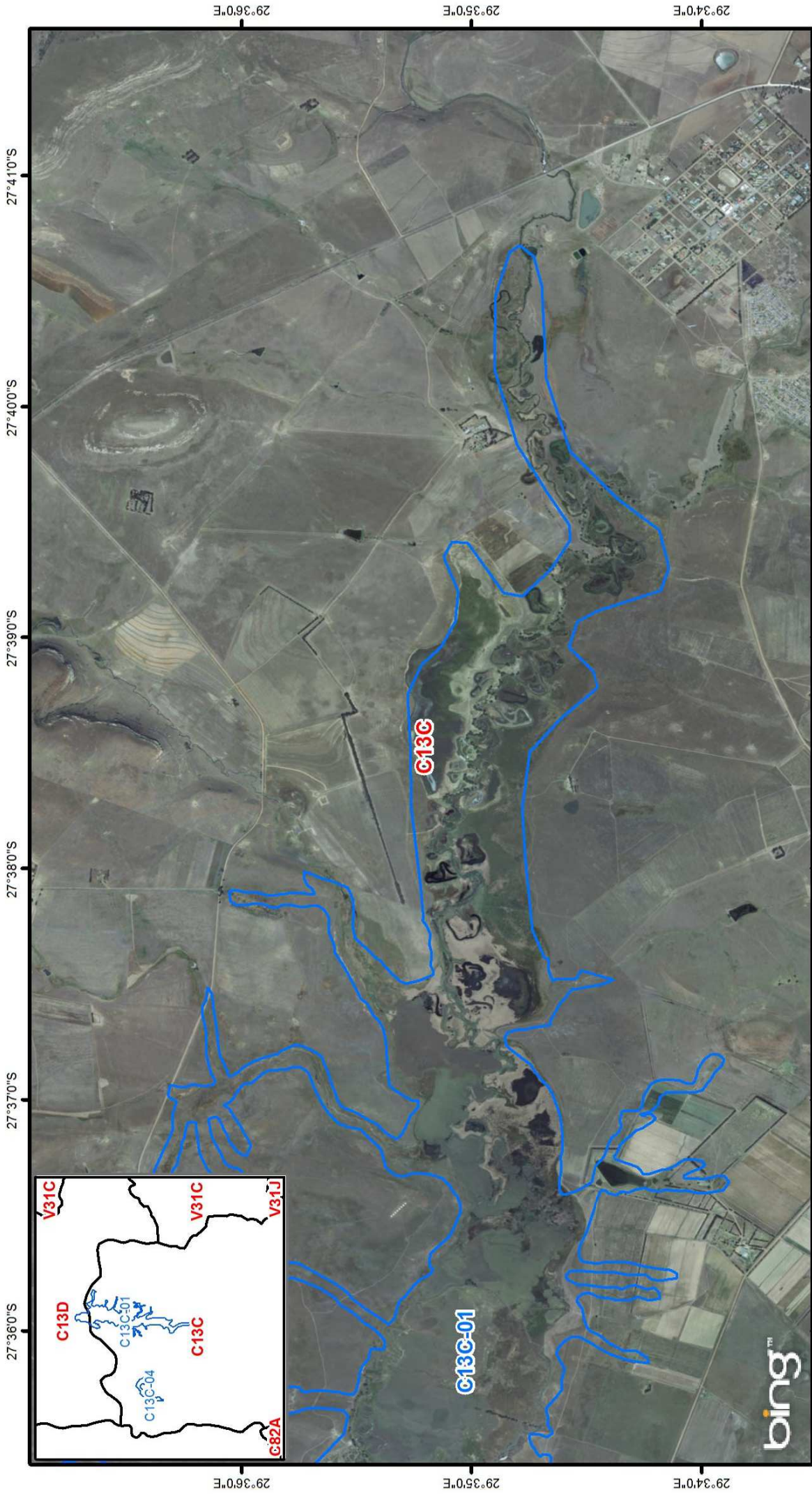
0 0.325 0.65 1.3 1.95 2.6 3.25 Kilometers

N

Co ordinate system : Geographic
 Datum : WGS84

Free State - Seekoeivlei - C13C-01 - Seekoeivlei - Houthoekspruit - m01

1:60,000



Quaternary Boundary

Wetlands

0 0.325 0.65 1.3 1.95 2.6 3.25 Kilometers

N

Co ordinate system : Geographic
 Datum : WGS84

Free State - Seekoeivlei - C13C-01 - Seekoeivlei - Houthoekspruit - m02

1:60,000



29°31'0"E

27°39'0"S

27°38'0"S

27°37'0"S

27°36'0"S

29°30'0"E

29°29'0"E

27°39'0"S

27°38'0"S

27°37'0"S

27°36'0"S



 Quaternary Boundary

 Wetlands



Co ordinate system : Geographic
Datum : WGS84

Free State - Seekoeivlei - C13C-04 - Bergplaats - m01

1:40,000