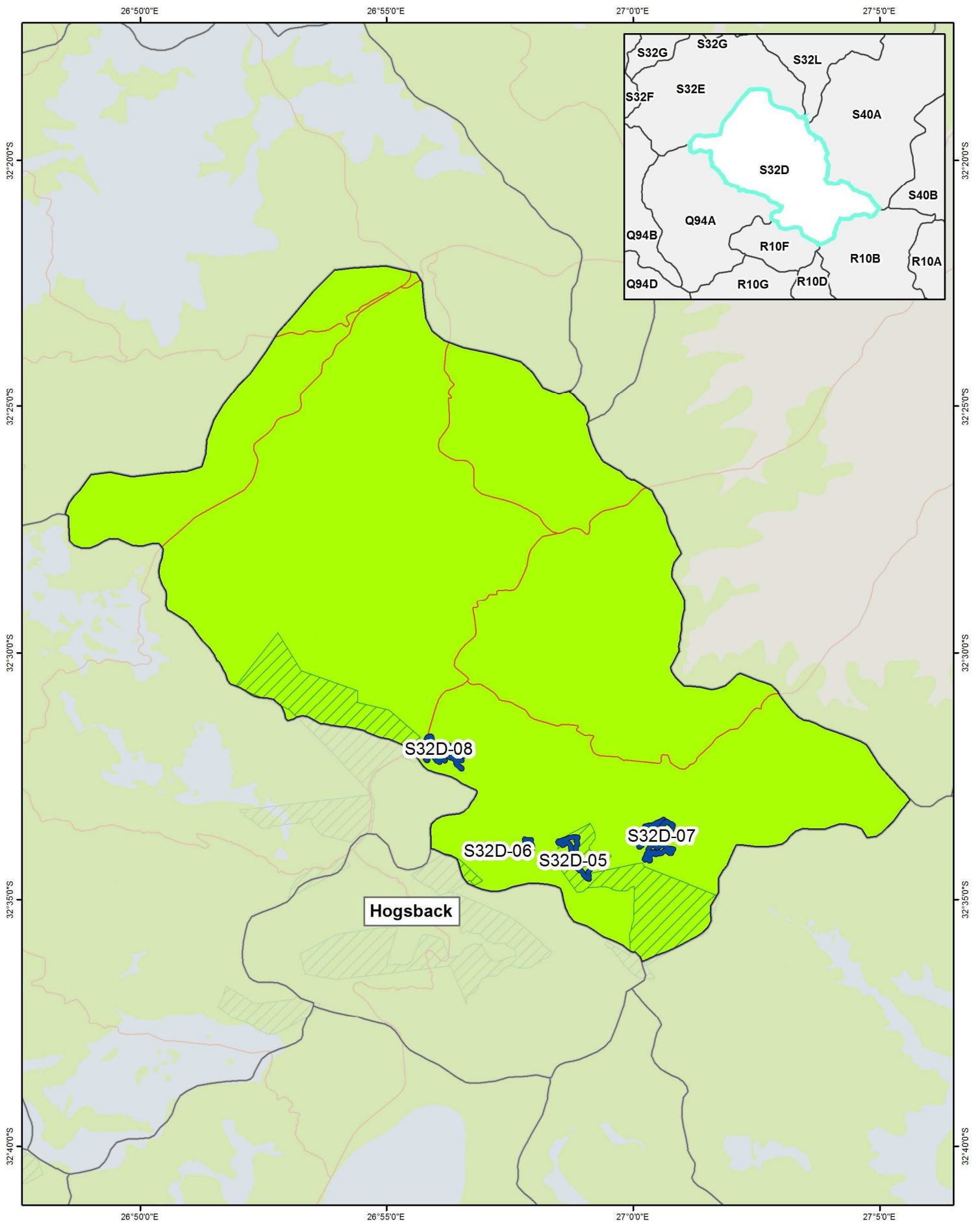


Appendix A

LOCALITY MAPS



Legend

- | | | | |
|---------------------|-------------------|-----------------------------------|---------------------------------|
| Wetland | Protected areas | Ecosystem protection level | Ecosystems threat status |
| Quaternary boundary | CBA (terrestrial) | Well protected | Vulnerable |
| Roads | CBA (aquatic) | Moderately protected | Endangered |
| | | Poorly protected | Critically endangered |



Coordinate system : Geographic
Datum : WGS84

Eastern Cape - Hogsback - S32D

1:184,940

25°25'0"E

25°30'0"E

25°35'0"E

33°40'0"S

33°45'0"S

33°50'0"S

33°55'0"S

34°0'0"S

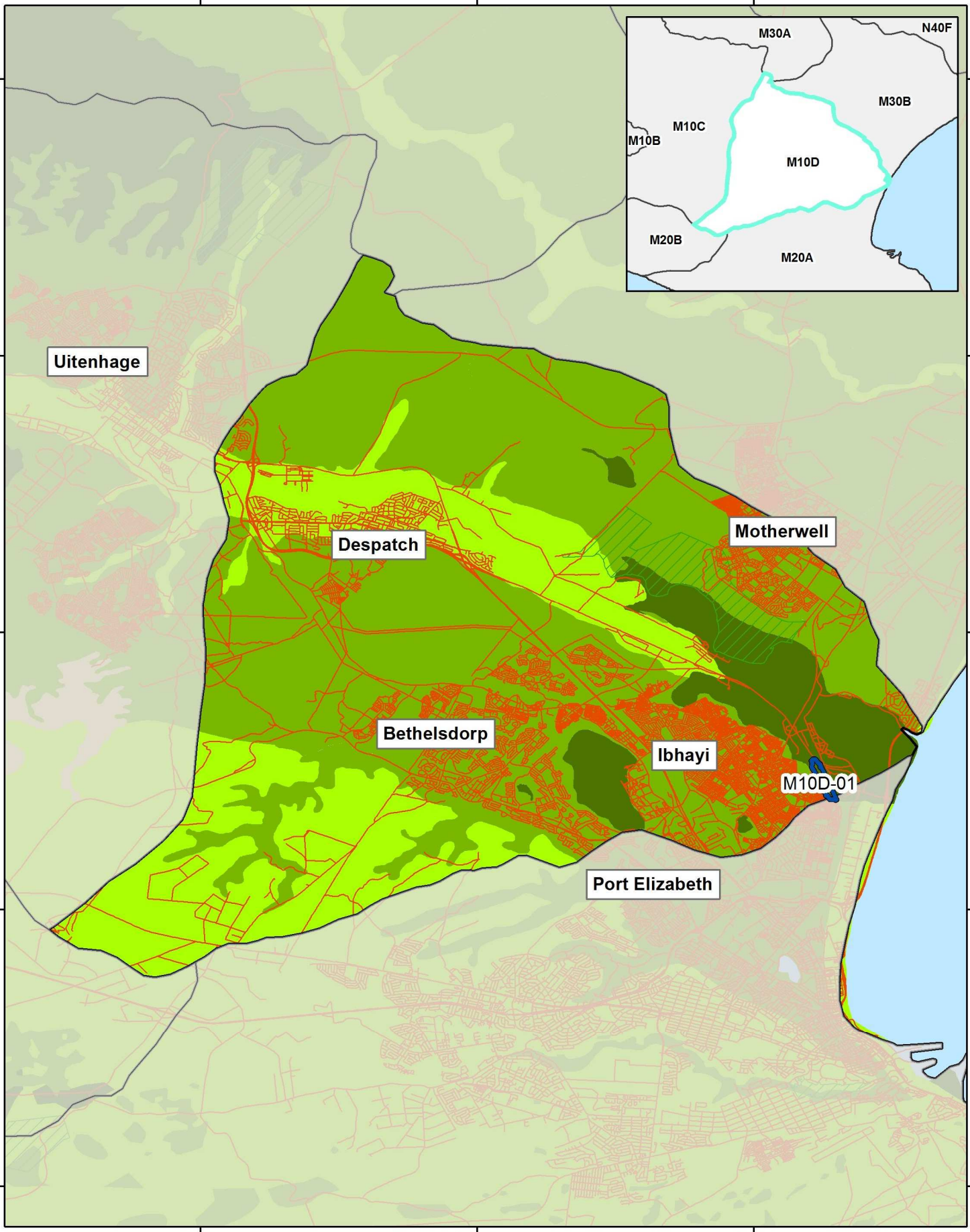
33°40'0"S

33°45'0"S

33°50'0"S

33°55'0"S

34°0'0"S



25°25'0"E

25°30'0"E

25°35'0"E

Legend

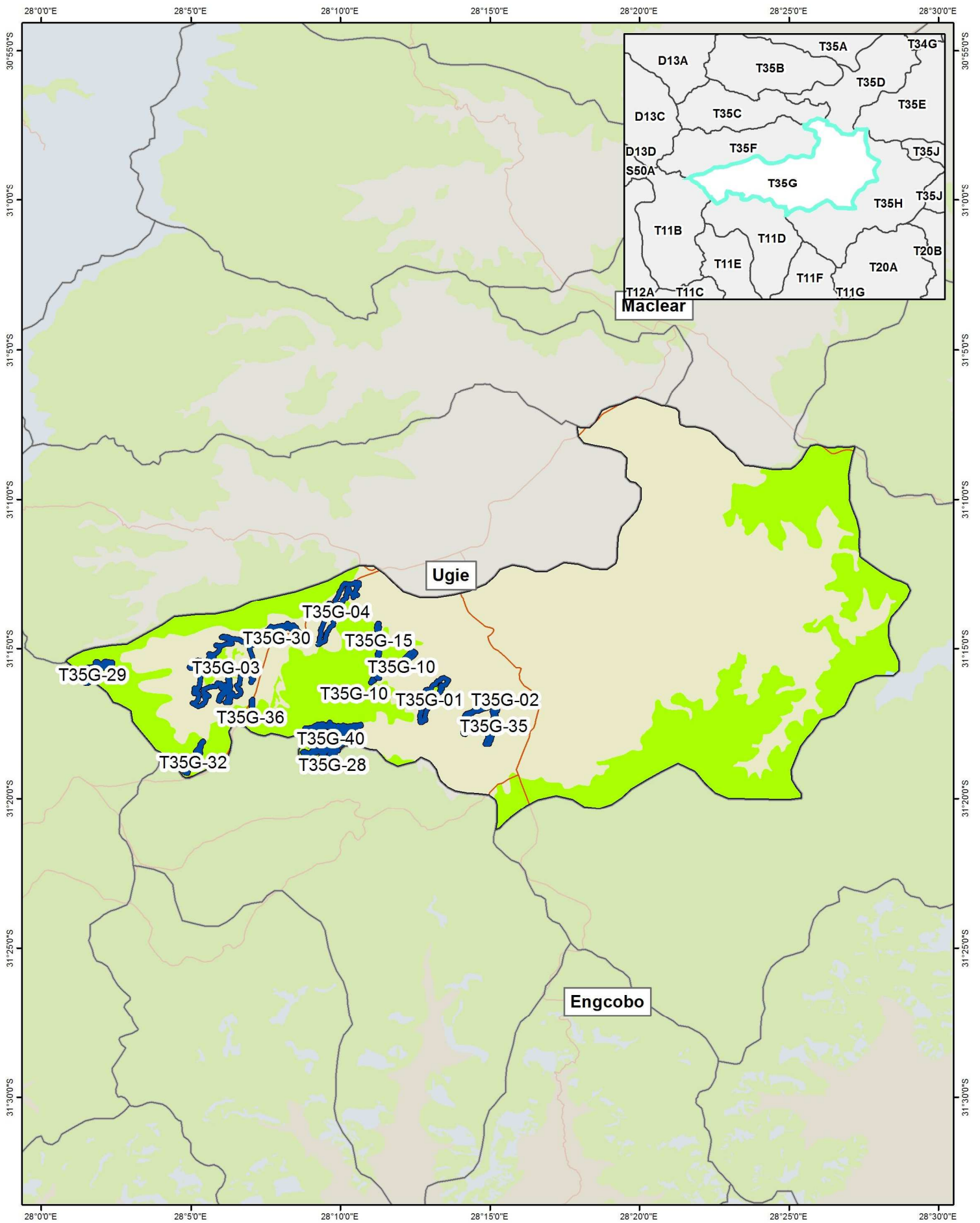
Wetland	Protected areas	Ecosystem protection level	Ecosystems threat status
Quaternary boundary	CBA (terrestrial)	Well protected	Vulnerable
Roads	CBA (aquatic)	Moderately protected	Endangered
		Poorly protected	Critically endangered



Coordinate system : Geographic
 Datum : WGS84

Eastern Cape - PE Metro - M10D

1:170,210



Legend

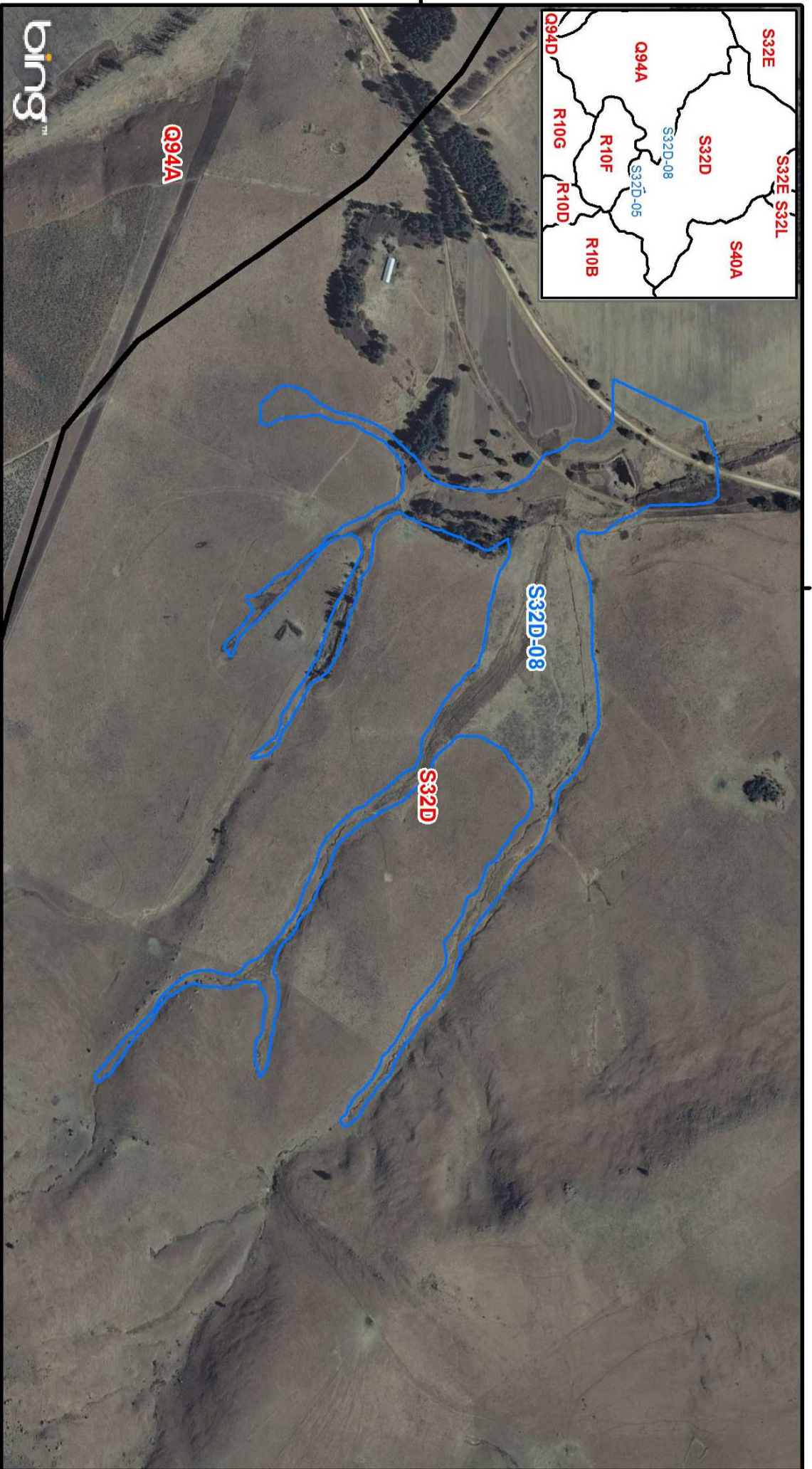
- | | | | |
|---------------------|-------------------|-----------------------------------|---------------------------------|
| Wetland | Protected areas | Ecosystem protection level | Ecosystems threat status |
| Quaternary boundary | CBA (terrestrial) | Well protected | Vulnerable |
| Roads | CBA (aquatic) | Moderately protected | Endangered |
| | | Poorly protected | Critically endangered |



Coordinate system : Geographic
Datum : WGS84

Eastern Cape - Gatberg - T35G

1:304,830



-  Quaternary Boundary
-  Wetlands



Co ordinate system : Geographic
 Datum : WGS84

Eastern Cape - Hogsback - S32D-08 - Dunskey - m01

1:15,000

25°36'0"E



25°36'0"E

33°53'0"S

33°53'0"S



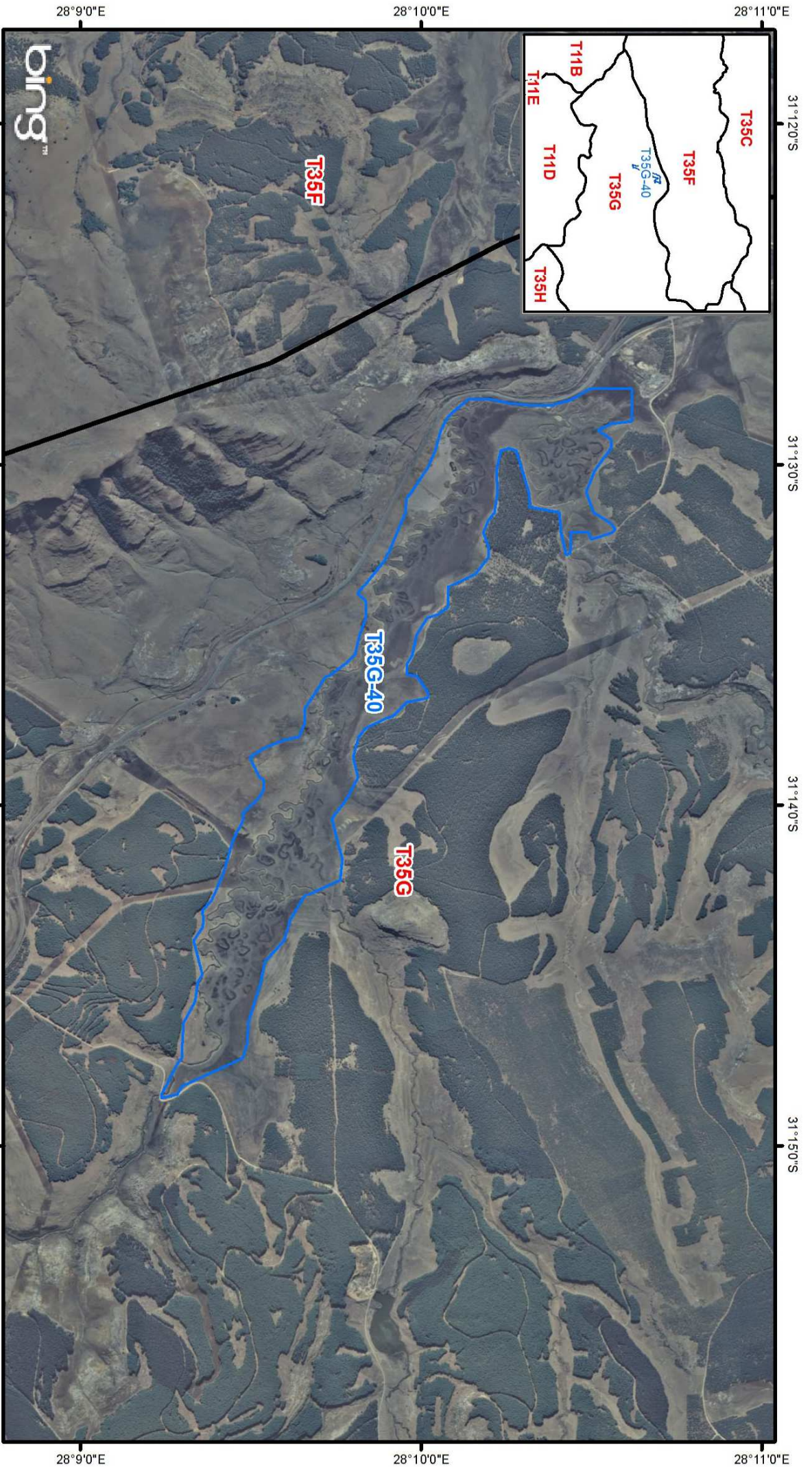
- Quaternary Boundary
- Wetlands



Co ordinate system : Geographic
 Datum : WGS84

Eastern Cape - PE Metro - M10D-01 - Swartkop's Vlei - m01

1:10,000



 Quaternary Boundary
 Wetlands

Co ordinate system : Geographic
 Datum : WGS84
 Eastern Cape - Gatberg - T35G-40 - Parmerton - m01

0 0.225 0.45 0.9 1.35 1.8 2.25
 Kilometers
 1:40,000