

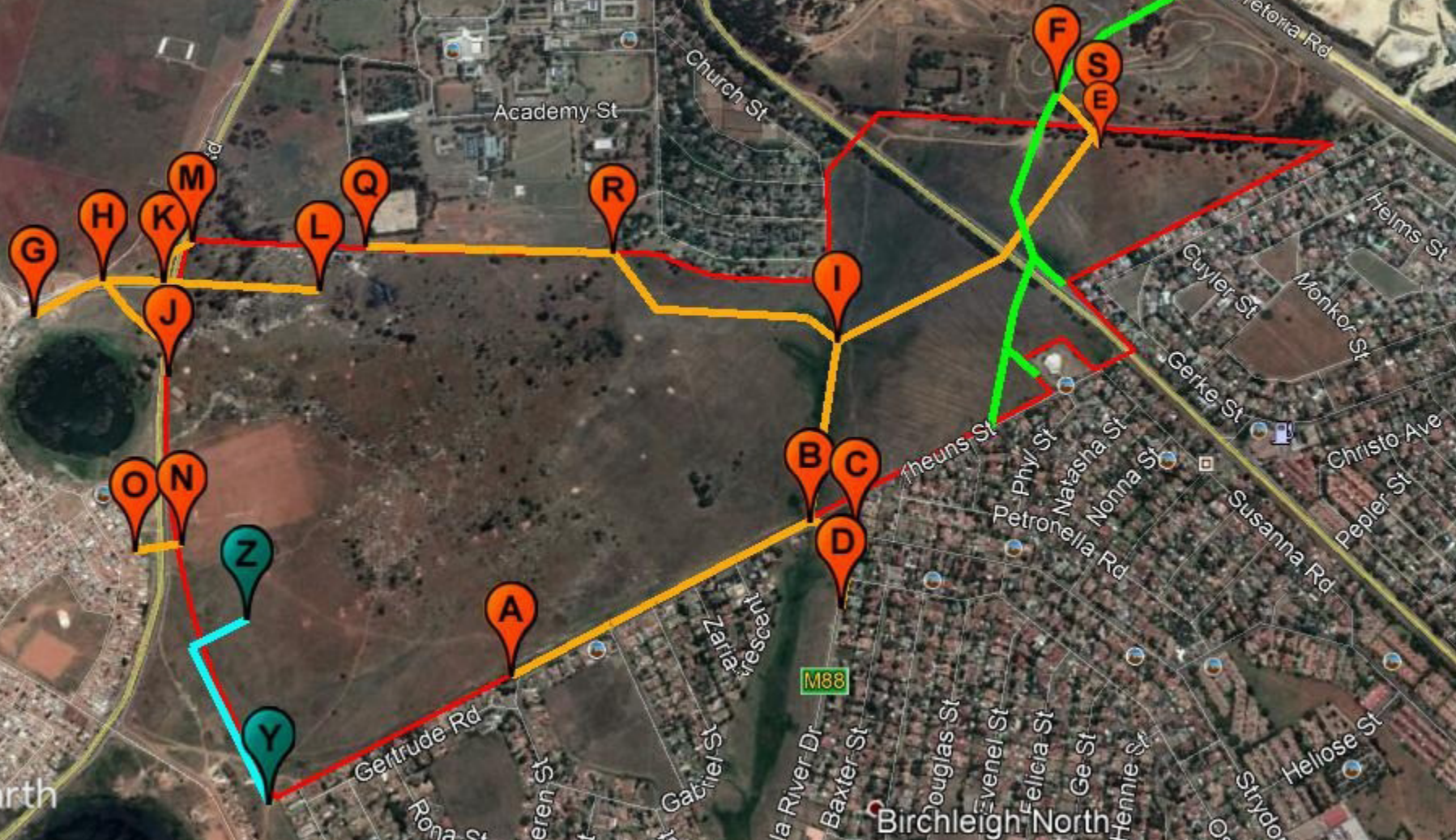
Google Earth

Image © 2019 DigitalGlobe  
© 2018 Google  
© 2018 AfriGlobe (Pty) Ltd.



1 km

Birchleigh North



Google Earth

Image © 2019 DigitalGlobe  
© 2018 Google  
© 2018 AfricGE (Pty) Ltd.



1 km

## Route Position Information

### Alternative: **Proposal**

- Point A (sewer pipeline)
- Point B (sewer pipeline)
- Point C (sewer pipeline)
- Point D (sewer pipeline)
- Point E (sewer pipeline)
- Point F (sewer pipeline)
- Point G (sewer pipeline)
- Point H (sewer pipeline)
- Point J (sewer pipeline)
- Point K (sewer pipeline)
- Point L (sewer pipeline)
- Point M (sewer pipeline)
- Point N (sewer pipeline)
- Point O (sewer pipeline)
- Point Y (water pipeline)
- Point Z (water pipeline)
- Point 1 (upgrade & extension of road)
- Point 2 (upgrade & extension of road)
- Point 3 (upgrade & extension of road)
- Point 4 (upgrade & extension of road)
- Point 5 (upgrade & extension of road)

Latitude (S):

Longitude (E):

-26.035654°	28.235122°
-26.041347°	28.238215°
-26.042206°	28.237999°
-26.041878°	28.236366°
-26.047436°	28.246436°
-26.046636°	28.247741°
-26.026306°	28.243116°
-26.027620°	28.243892°
-26.028995°	28.241711°
-26.028815°	28.243820°
-26.031887°	28.243538°
-26.029344°	28.244726°
-26.029390°	28.238054°
-26.028511°	28.237925°
-26.031194°	28.232666°
-26.030678°	28.236438°
-26.026277°	28.232006°
-26.029577°	28.235538°
-26.028906°	28.243662°
-26.029626°	28.247067°
-26.026020°	28.243104°

### Alternative: **Alternative 1**

- Point A (sewer pipeline)
- Point B (sewer pipeline)
- Point C (sewer pipeline)
- Point D (sewer pipeline)
- Point G (sewer pipeline)
- Point H (sewer pipeline)
- Point J (sewer pipeline)
- Point K (sewer pipeline)
- Point L (sewer pipeline)
- Point M (sewer pipeline)
- Point I (sewer pipeline)
- Point Q (sewer pipeline)
- Point R (sewer pipeline)
- Point S (sewer pipeline)
- Point Y (water pipeline)
- Point Z (water pipeline)
- Point 1 (upgrade & extension of road)
- Point 2 (upgrade & extension of road)
- Point 3 (upgrade & extension of road)
- Point 4 (upgrade & extension of road)
- Point 5 (upgrade & extension of road)

Latitude (S):

Longitude (E):

-26.035654°	28.235122°
-26.041347°	28.238215°
-26.042206°	28.237999°
-26.041878°	28.236366°
-26.026306°	28.243116°
-26.027620°	28.243892°
-26.028995°	28.241711°
-26.028815°	28.243820°
-26.031887°	28.243538°
-26.029344°	28.244726°
-26.042013°	28.242124°
-26.032770°	28.244519°
-26.037656°	28.244238°
-26.047415°	28.246881
-26.031194°	28.232666°
-26.030678°	28.236438°
-26.026277°	28.232006°
-26.029577°	28.235538°
-26.028906°	28.243662°
-26.029626°	28.247067°
-26.026020°	28.243104°