

Environmental Impact Assessment (EIA) for the  
Proposed Construction, Operation and  
Decommissioning of a Sea Water Reverse Osmosis  
Plant and Associated Infrastructure Proposed at  
Lovu on the KwaZulu-Natal South Coast

# FINAL EIA REPORT

Appendix D:  
Layout and Sensitivity Maps

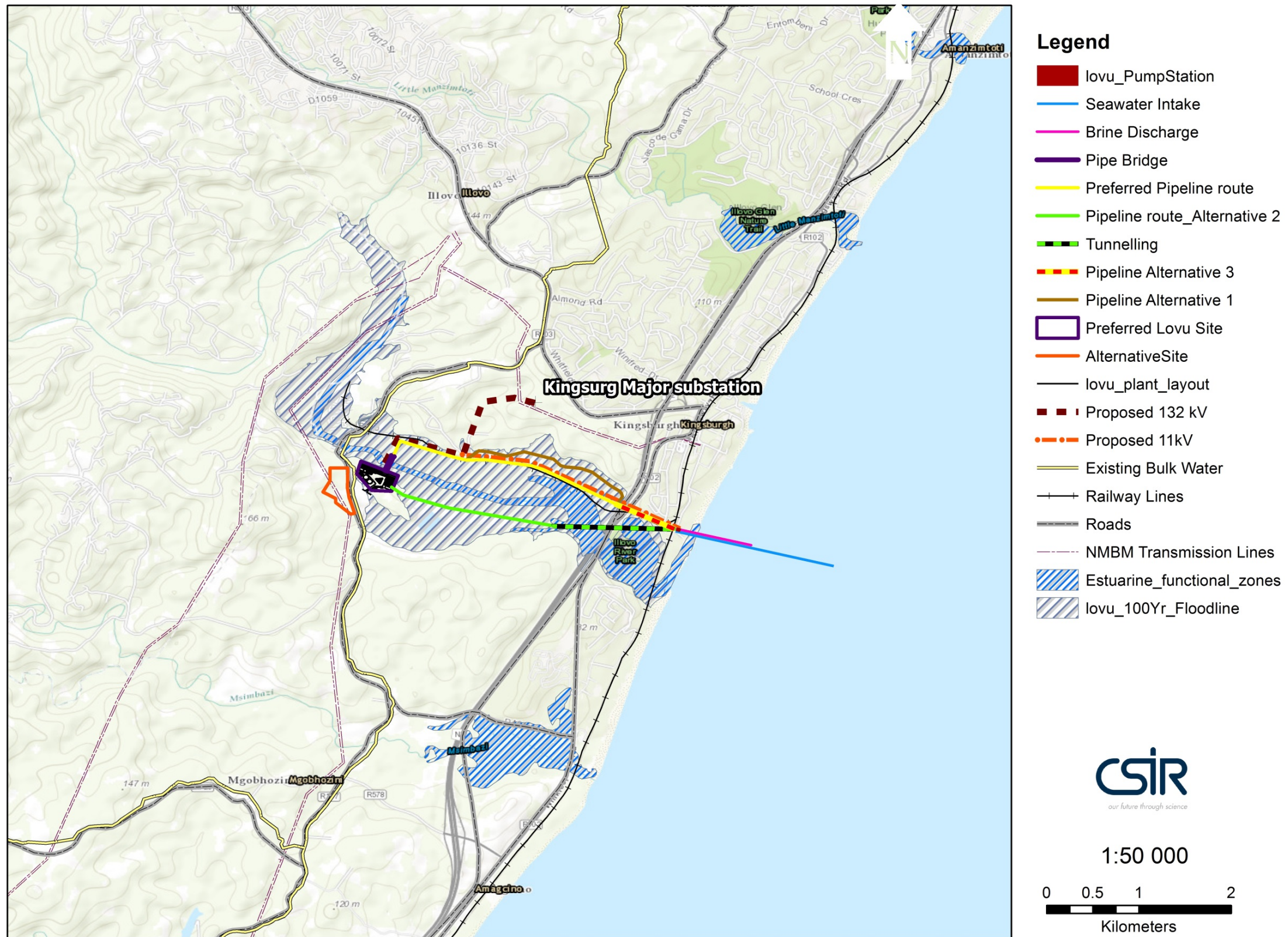


Figure 1 Topographic map 1/50 000 showing the location of the proposed project

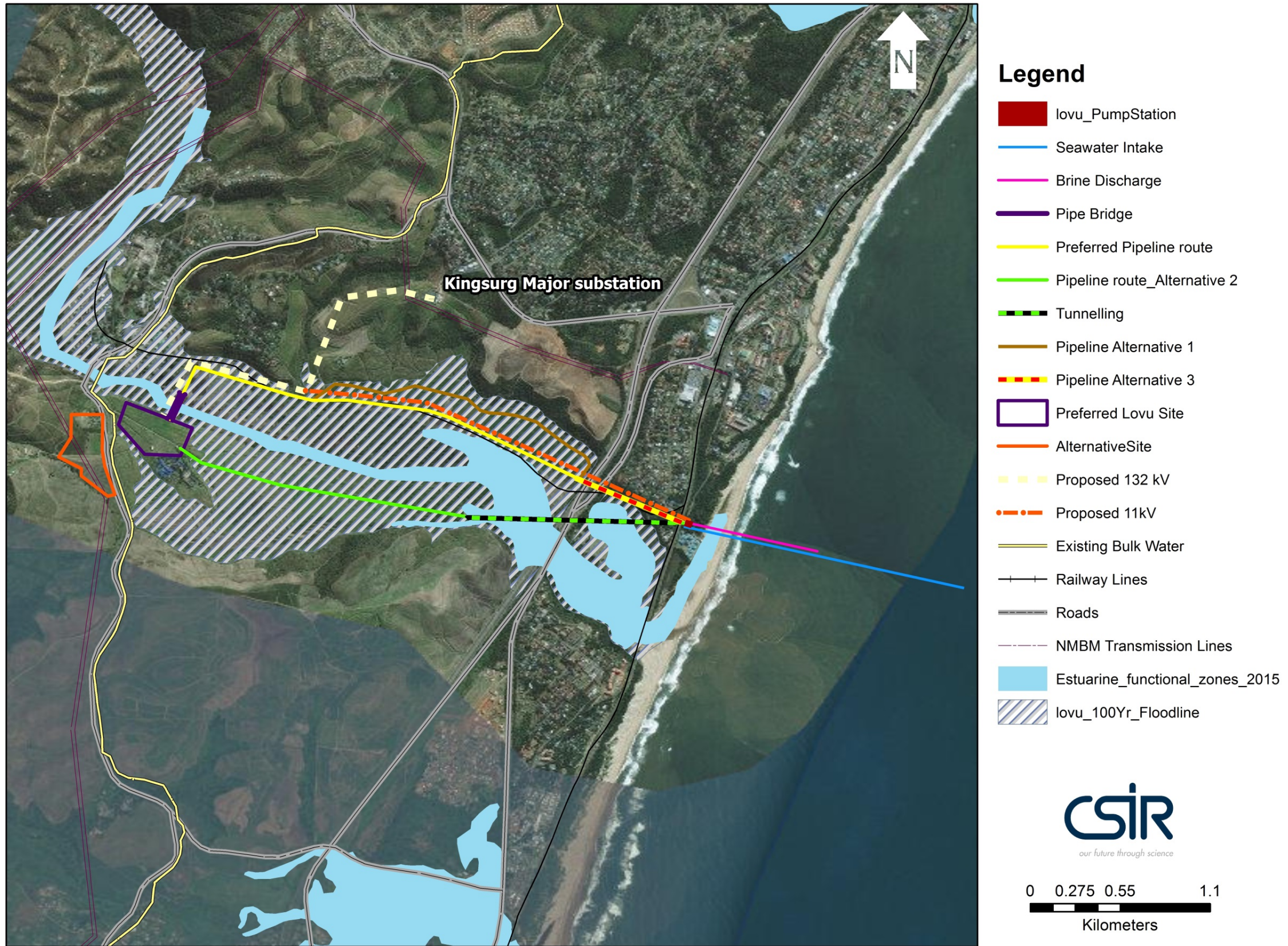


Figure2 Location map for the proposed project

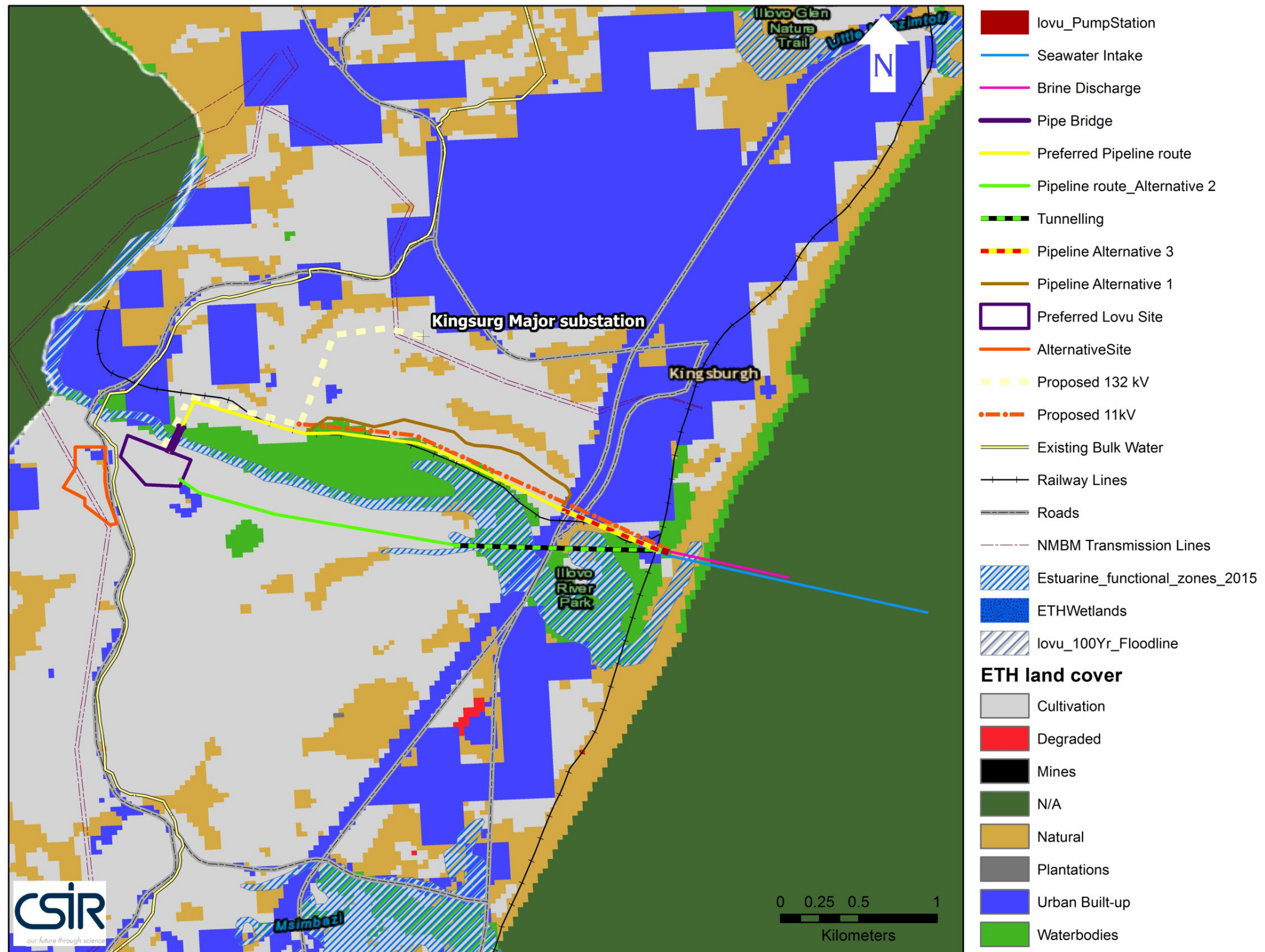


Figure 3 Landcover (SANBI)

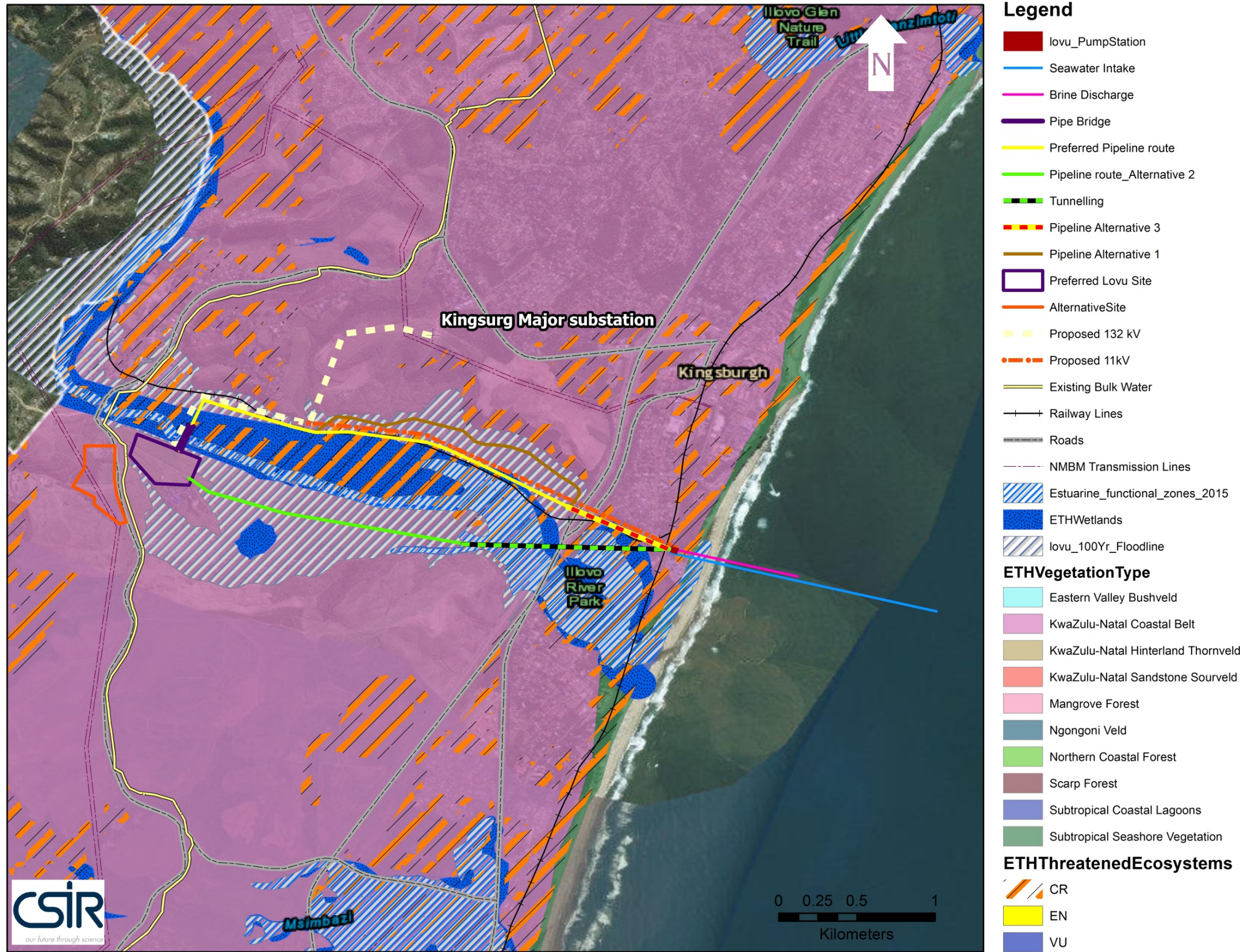


Figure 4 Proposed project in relation to vegetation types and remaining Threatened ecosystems

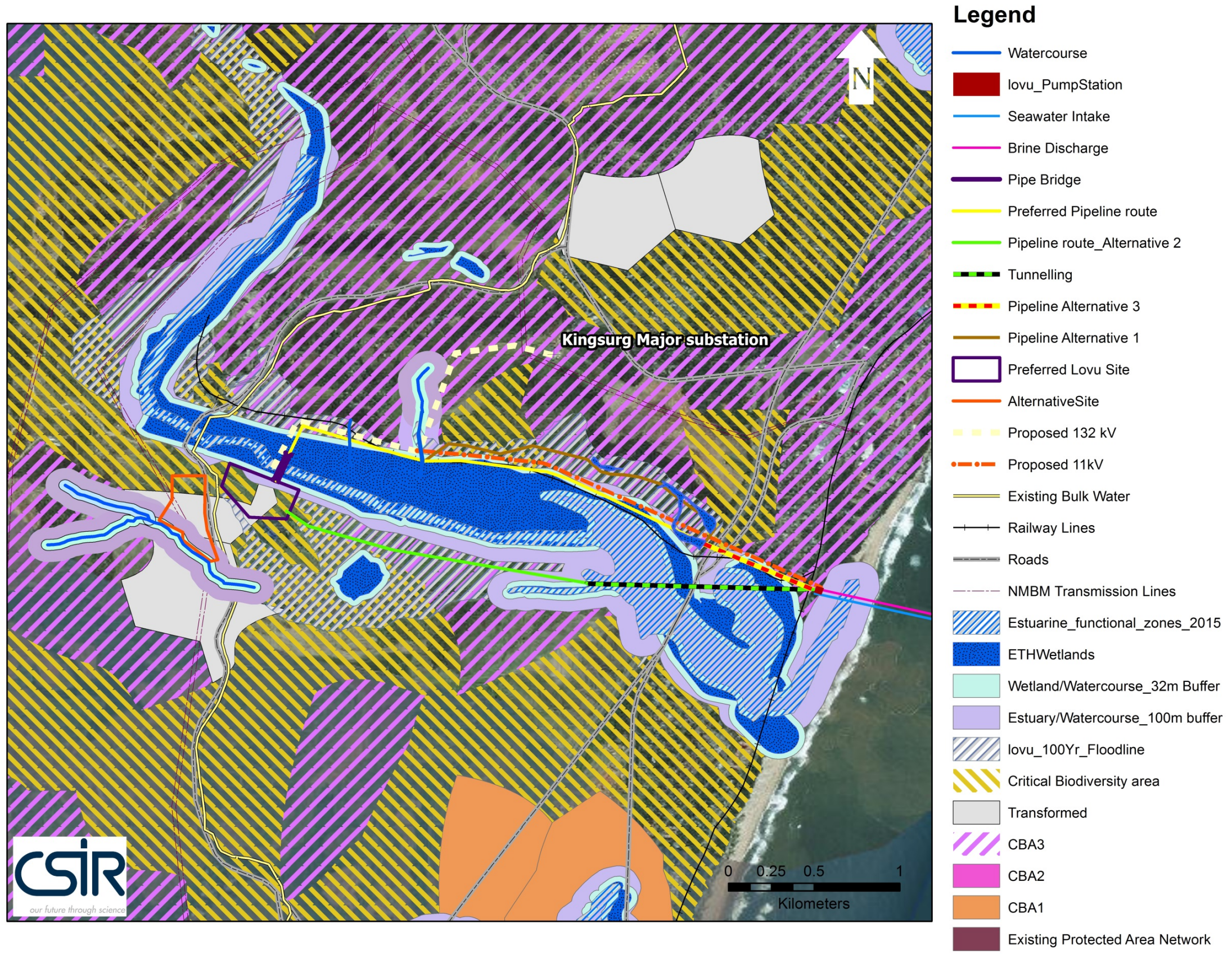


Figure 5 Proposed project in relation to CBA as defined in the EKZNW Terrestrial Systematic Conservation Plan