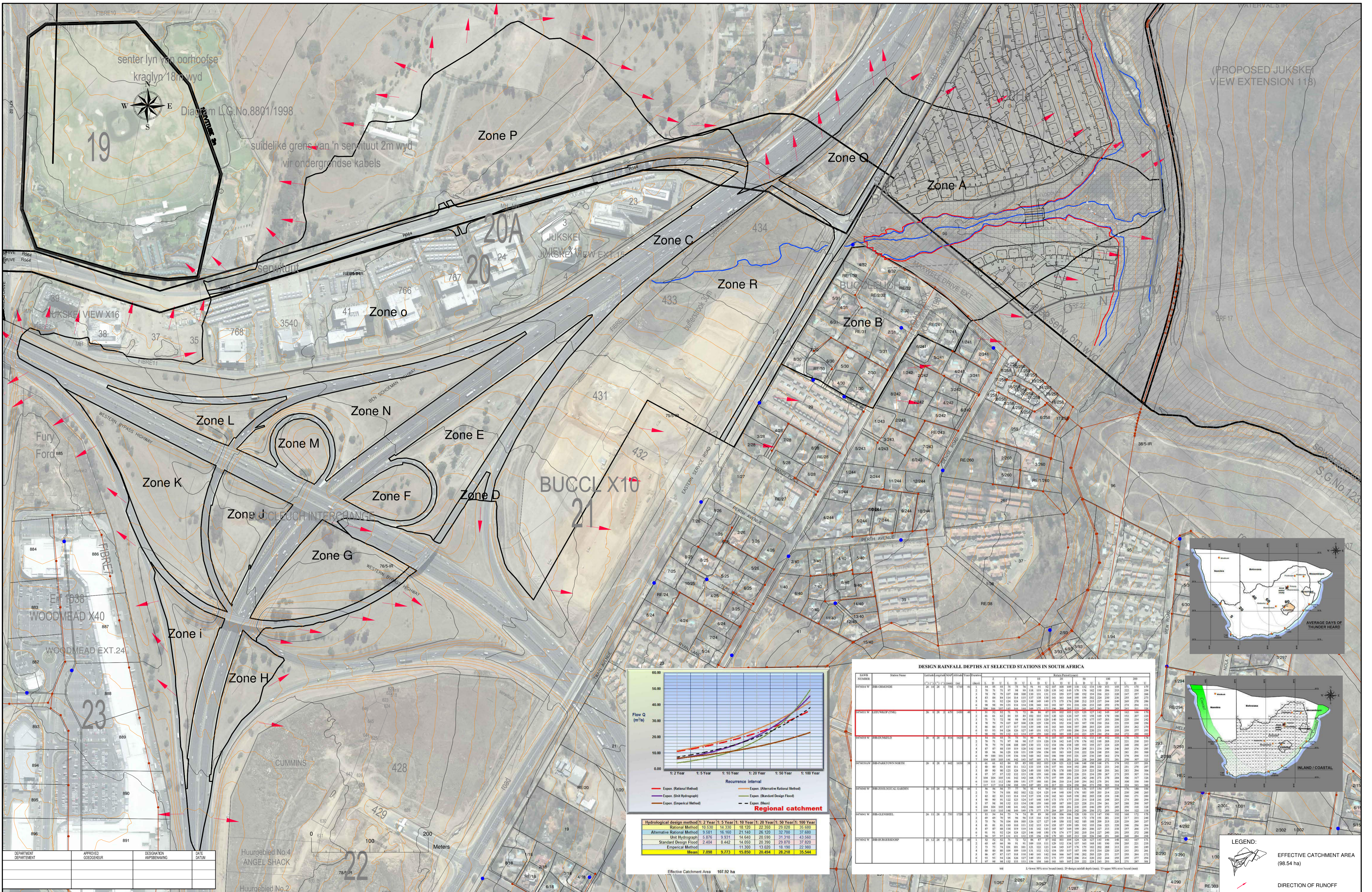


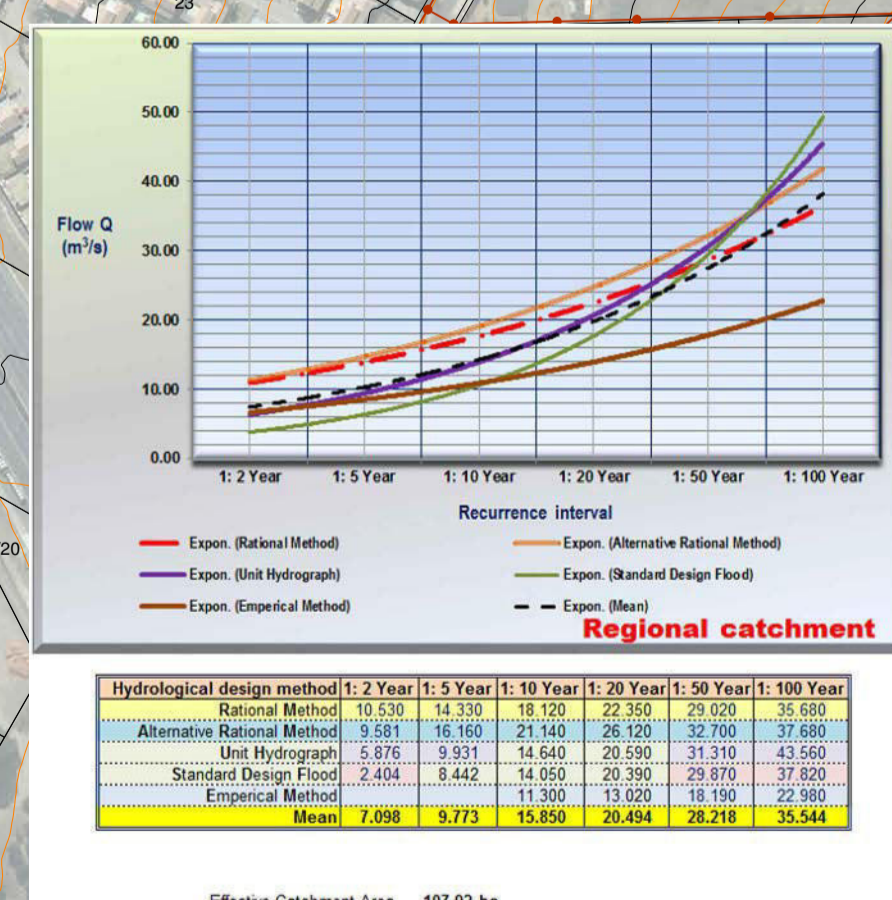
## **6) Design Layouts**

### **a) 16/09/400/00 Regional catchment area**



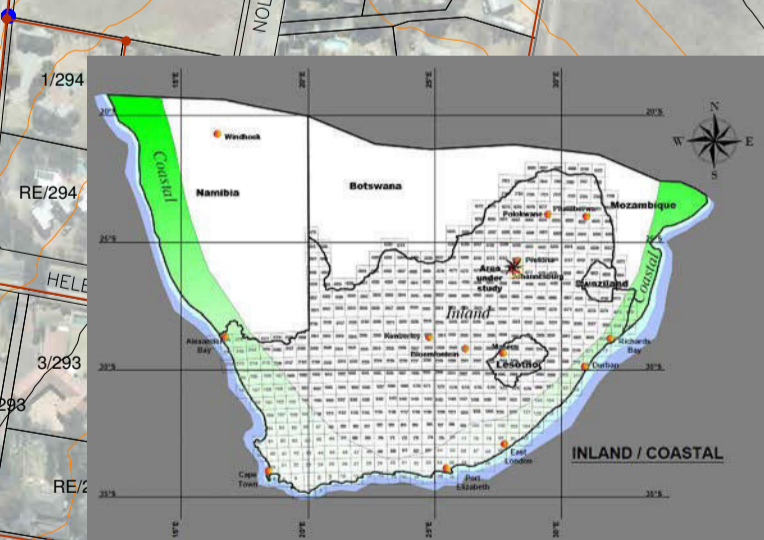
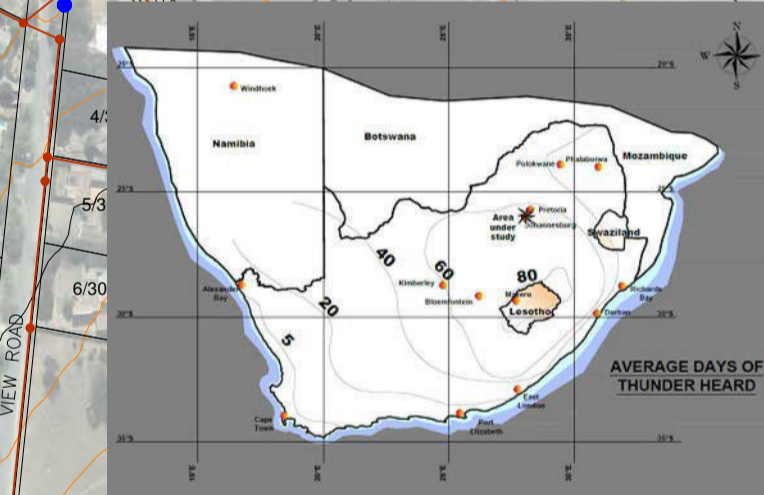


(PROPOSED JUKSKEI VIEW EXTENSION 118)



**DESIGN RAINFALL DEPTHS AT SELECTED STATIONS IN SOUTH AFRICA**

STATION	STATION NAME	1:2	1:5	1:10	1:20	1:50	1:100	1:200	1:500	1:1000
DE1001 W	DE1001 W	28	38	48	58	68	78	88	98	108
DE1002 W	DE1002 W	28	38	48	58	68	78	88	98	108
DE1003 W	DE1003 W	28	38	48	58	68	78	88	98	108
DE1004 W	DE1004 W	28	38	48	58	68	78	88	98	108
DE1005 W	DE1005 W	28	38	48	58	68	78	88	98	108
DE1006 W	DE1006 W	28	38	48	58	68	78	88	98	108
DE1007 W	DE1007 W	28	38	48	58	68	78	88	98	108
DE1008 W	DE1008 W	28	38	48	58	68	78	88	98	108
DE1009 W	DE1009 W	28	38	48	58	68	78	88	98	108
DE1010 W	DE1010 W	28	38	48	58	68	78	88	98	108



**LEGEND:**  
 EFFECTIVE CATCHMENT AREA (96.54 ha)  
 DIRECTION OF RUNOFF

CONSULTING ENGINEERS - RAADGEWENDE INGENIEURSBUREAU  
**C-plan**  
 CIVIL ENGINEERS (PTY) LTD  
 16/09/400/00 Rev.0

Johannesburg Roads Agency (Pty) Ltd  
 66 Steyn Street  
 Johannesburg  
 2000  
 Private Bag 170  
 Braamfontein  
 2017

Johannesburg Roads Agency (Pty) Ltd  
**Extension 128**  
**Waterfall Kikuyu**  
 HYDROLOGICAL : REGIONAL CATCHMENT

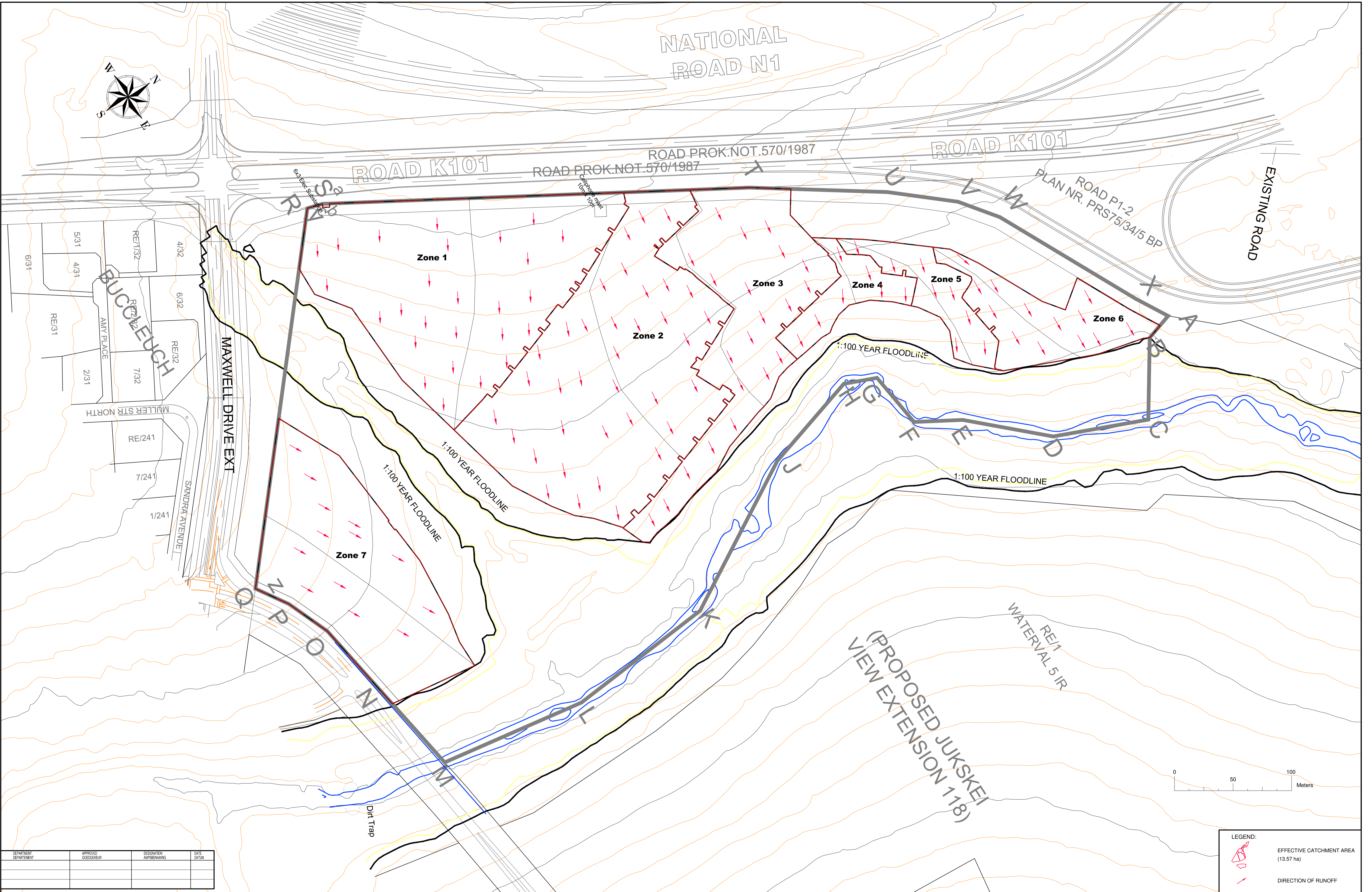
DESIGN MANAGER  
 BESTUURERS  
 DATE

SCALE	AMENDMENTS - WYSIGINGS	APPROVED	DATE	DRAWING No.
As shown	0 SUBMITTED TO COUNCIL FOR APPROVAL	08 Oct 2016	24 Oct 2016	TEKENING Nr.
				FILE No
				LEER Nr.



**b) 16/09/400/01 Pre development conditions**





DEPARTMENT	APPROVED	DESIGNATION	DATE
DEPARTMENT	GOEDGEKUR	AMPSBENAWING	DATUM

**CONSULTING ENGINEERS - RAADGEWENDE INGENIEURSBUREAU**

**C-plan**  
CIVIL ENGINEERS (PTY) LTD

400 OUTENBERG RD  
PO BOX 8622  
WILLOWDEN  
1554  
TEL: 011 472 2377  
FAX: 011 472 2355

J.B. Besseling  
2002/70026  
17 Oct. 2016

**Johannesburg Roads Agency (Pty) Ltd**

66 Silver Street  
Johannesburg  
2000  
Private Bag 170  
Braamfontein  
2017

Telephone +27 (0) 11 266 5000  
Facsimile +27 (0) 11 266 9181  
www.jra.co.za  
www.jrap.co.za

**Johannesburg Roads Agency (Pty) Ltd**

### Extension 128

### Waterfall Kikuyu

**STORMWATER MANAGEMENT - PRE DEVELOPMENT CONDITIONS**

DESIGN MANAGER	SCALE	AMENDMENTS - WYSIGINGS	APPROVED	DATE	DRAWING No.
BESTUURER	1:1 500	0 SUBMITTED TO COUNCIL FOR APPROVAL	GOEDGEKUR	10 Oct. 2016	TEKENING Nr.
DATE	DATUM				FILE No
					LEER No

**LEGEND:**

EFFECTIVE CATCHMENT AREA (13.57 ha)

DIRECTION OF RUNOFF



**c) 16/09/400/02 Post development conditions**







# ANNEXURE D:

## MAPS



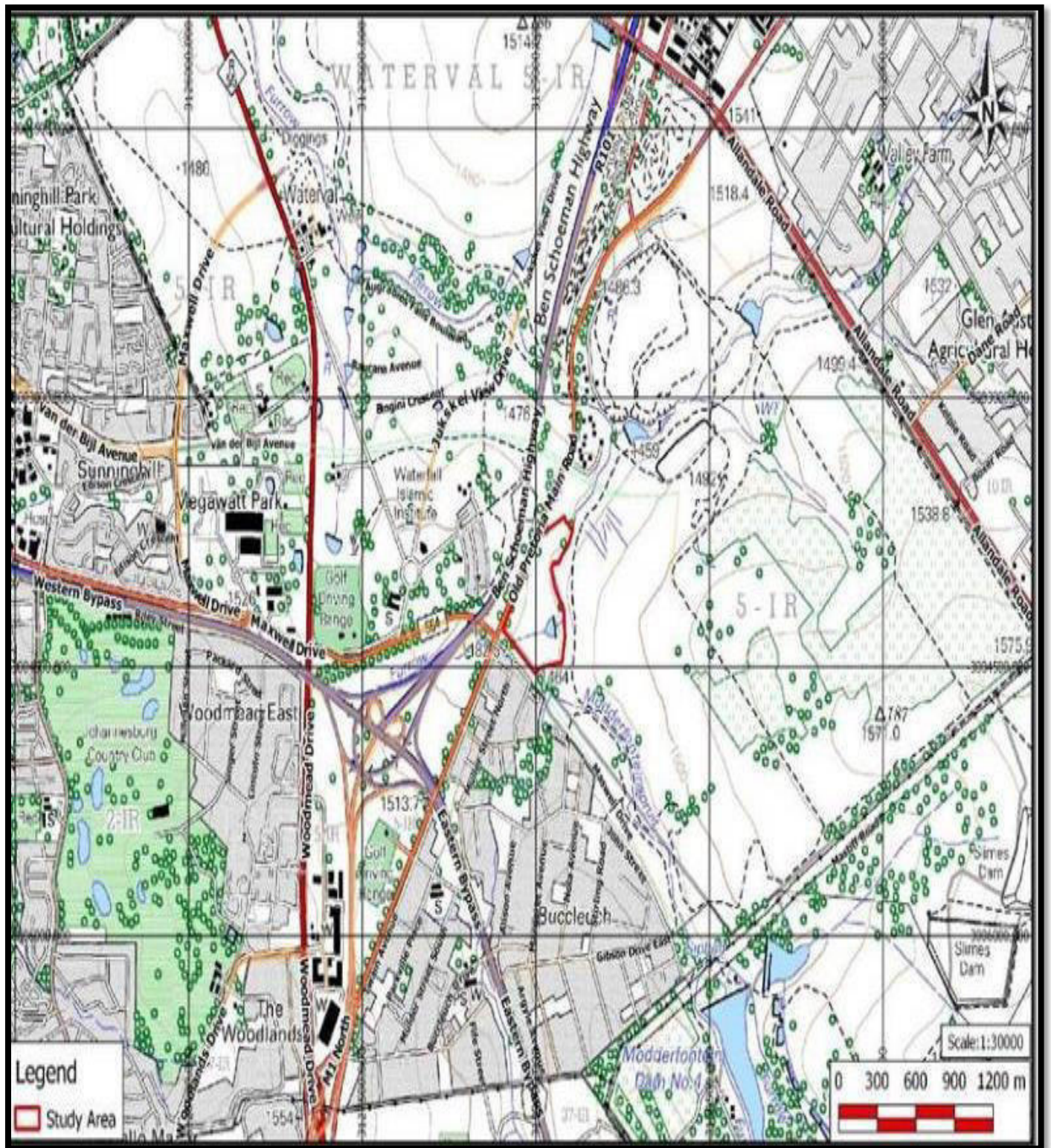


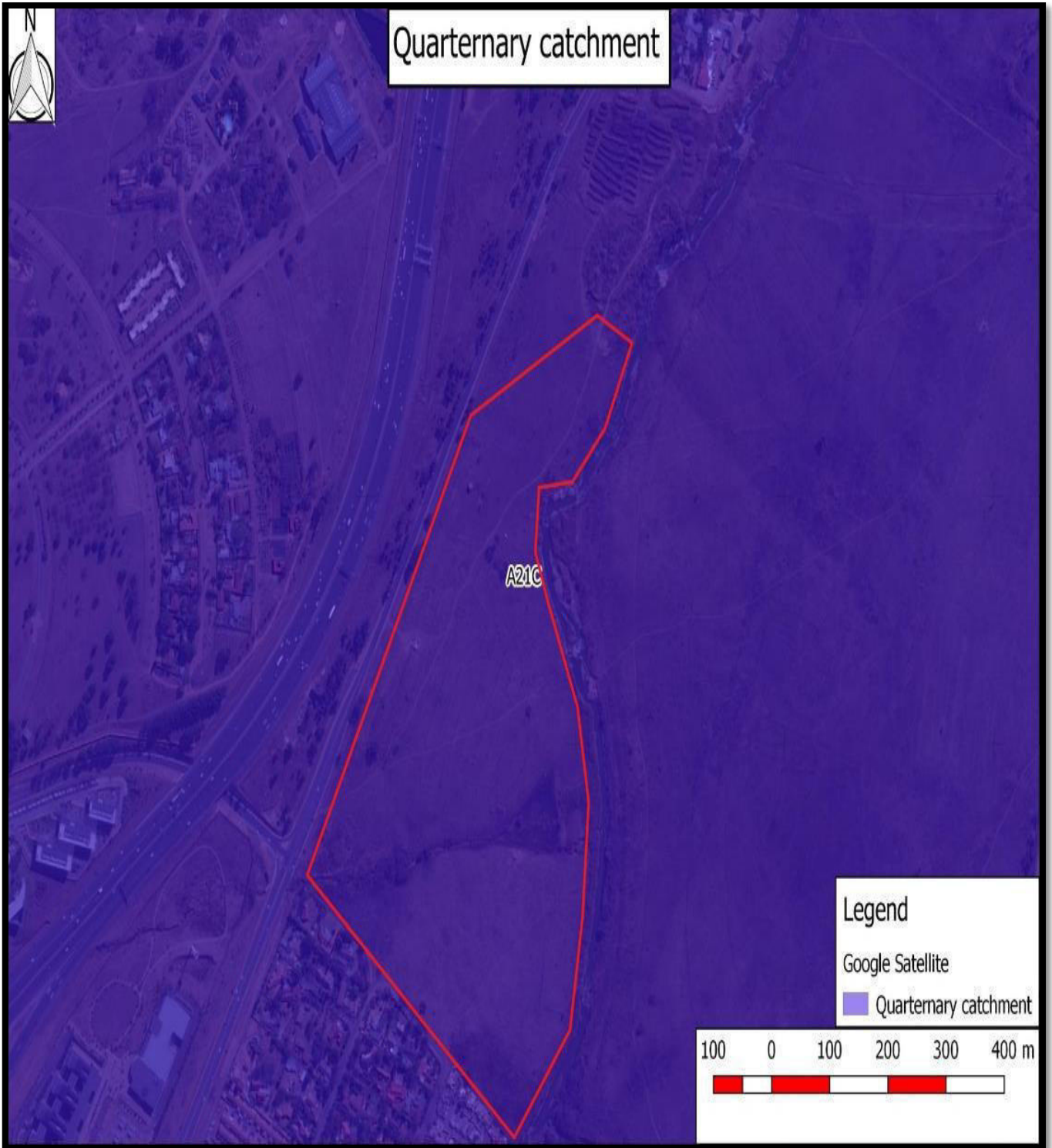
Figure 1: Locality Map





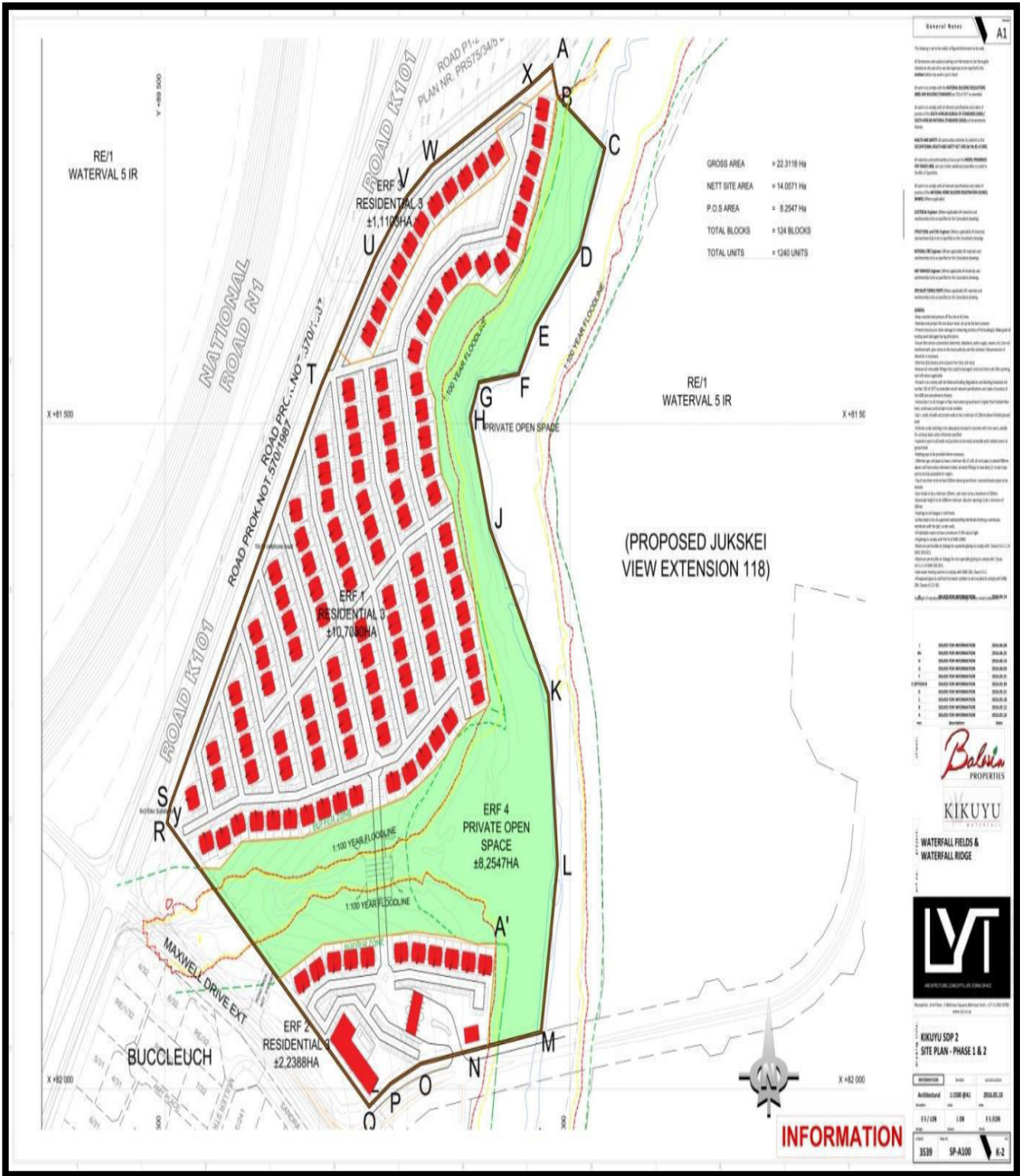
Figure 2: Aerial Map





**Figure 3: Quaternary Catchment Map**





**Figure 4: Layout Plan**



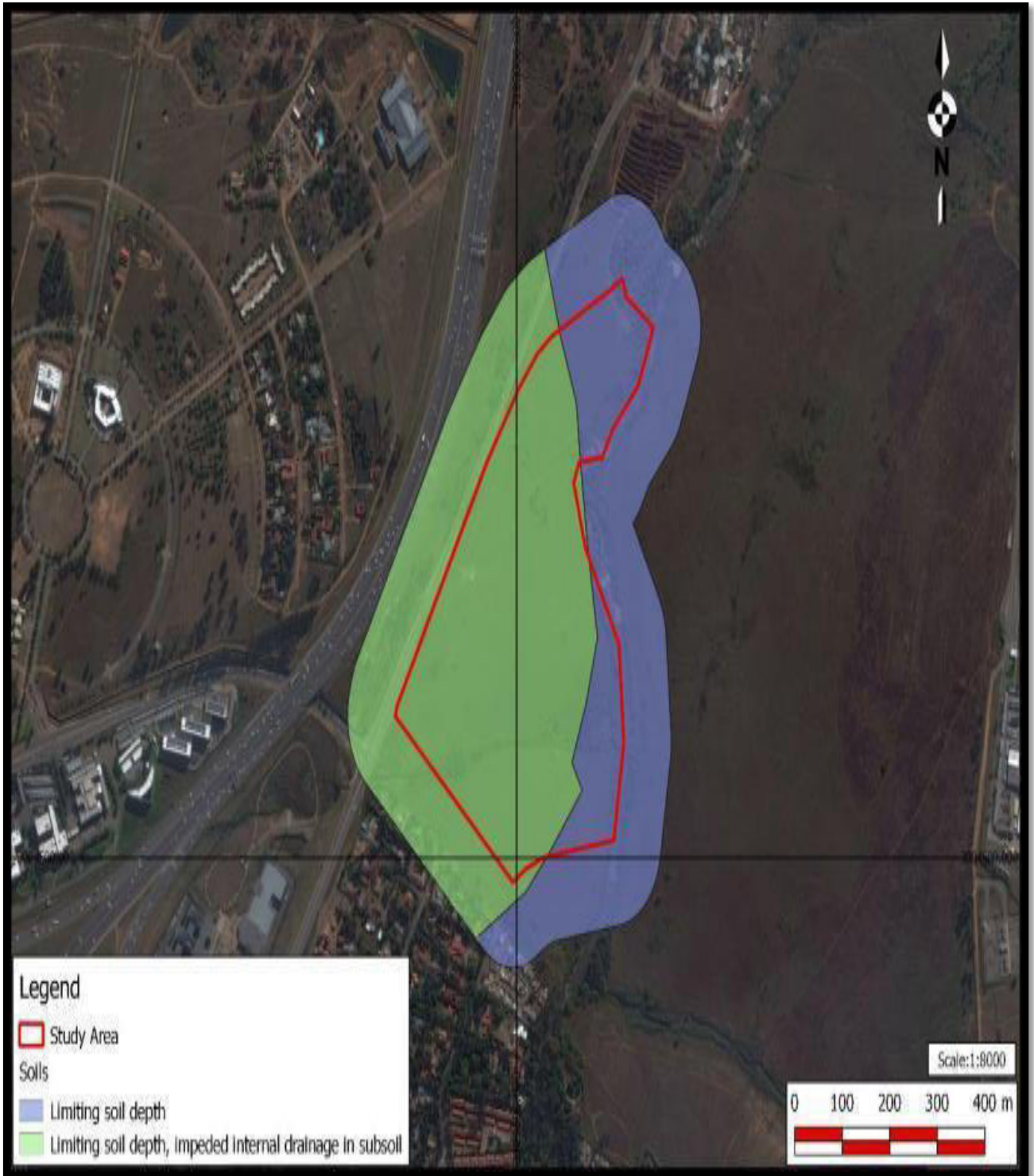
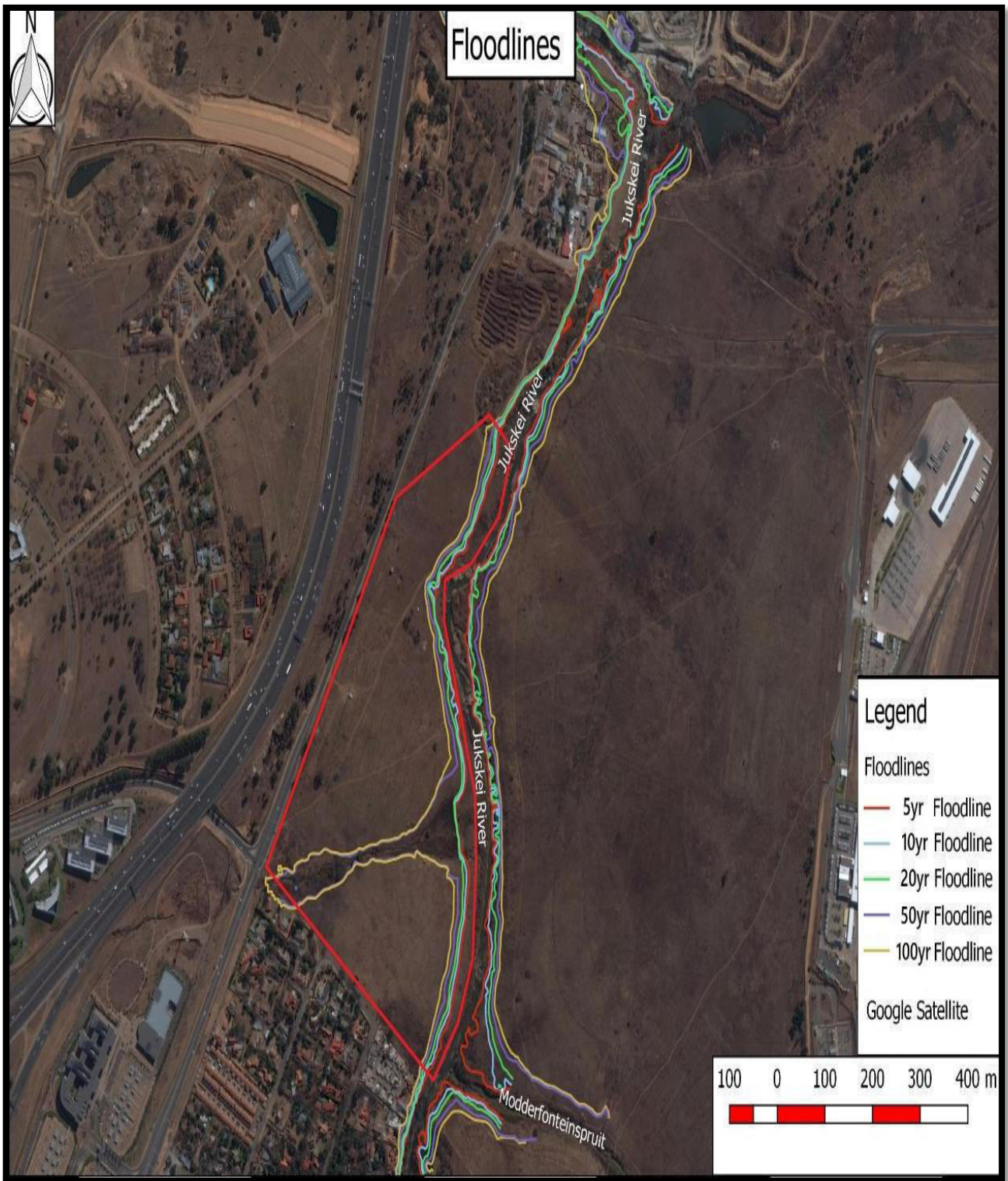


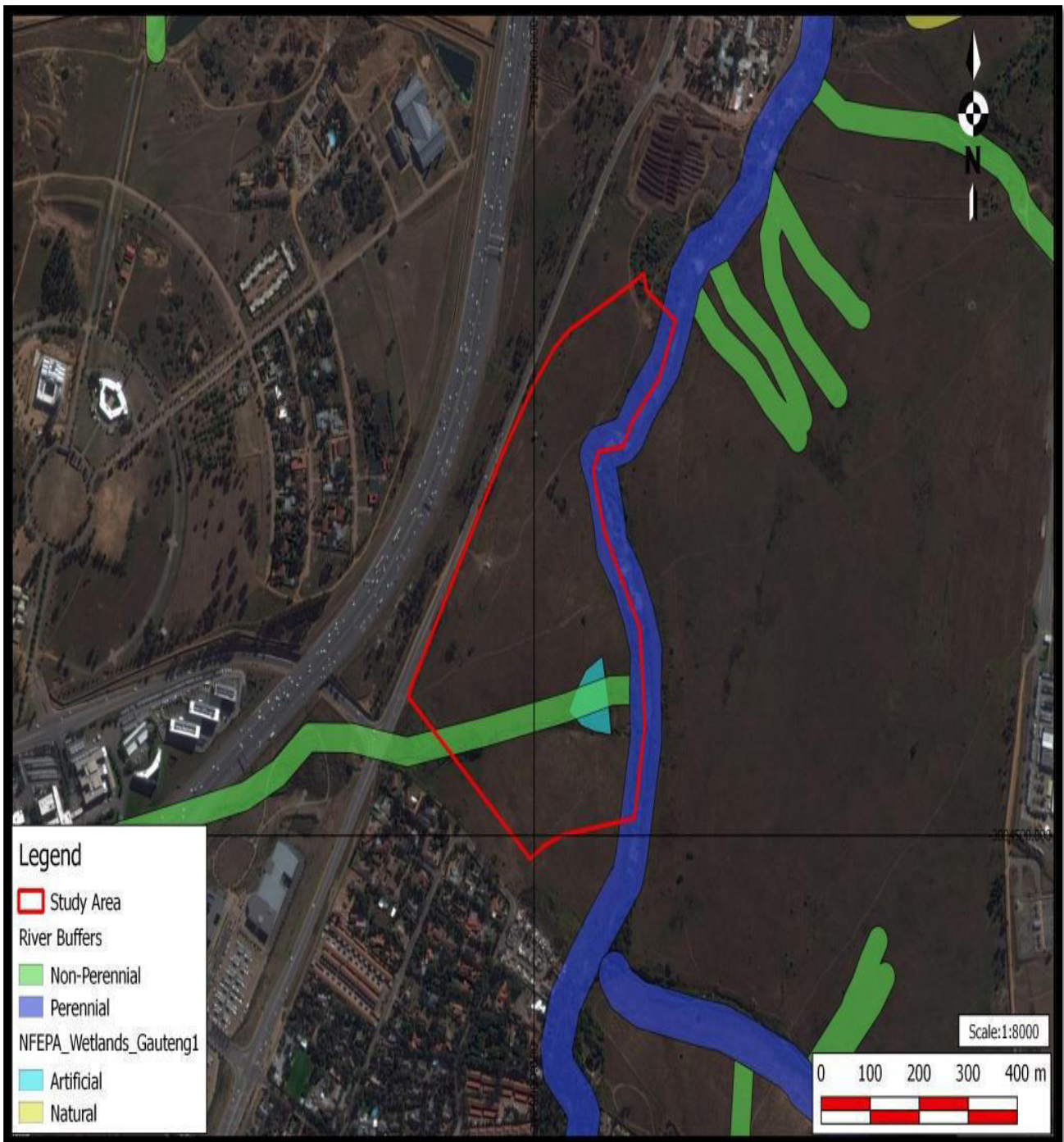
Figure 5: Soil Map





**Figure 6: Floodline Map**





**Figure 7: Rivers and Wetlands Map**



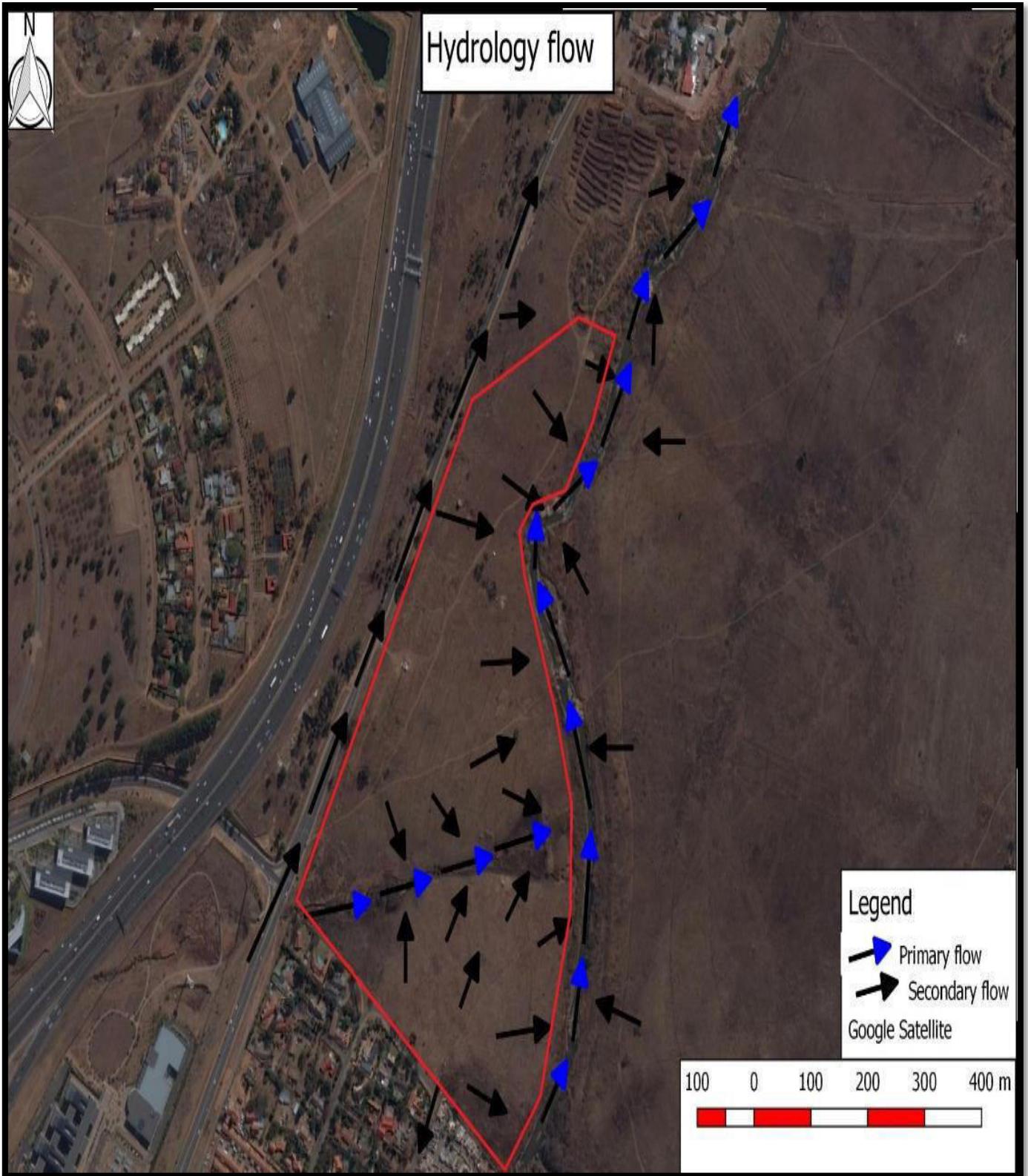
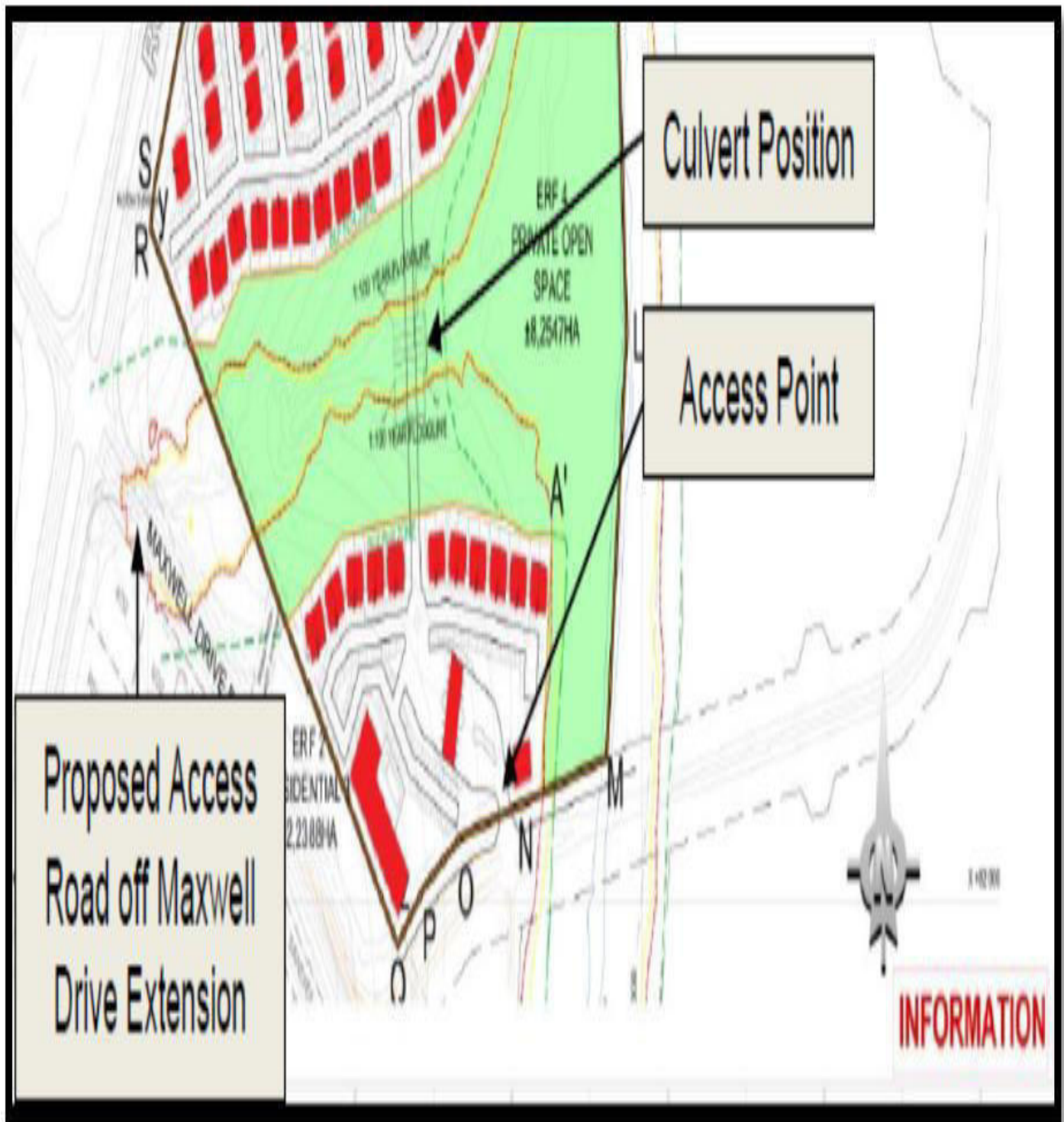


Figure 8: Hydrology Map





**Figure 9:**  
**Bridge Access Road and culvert crossings**



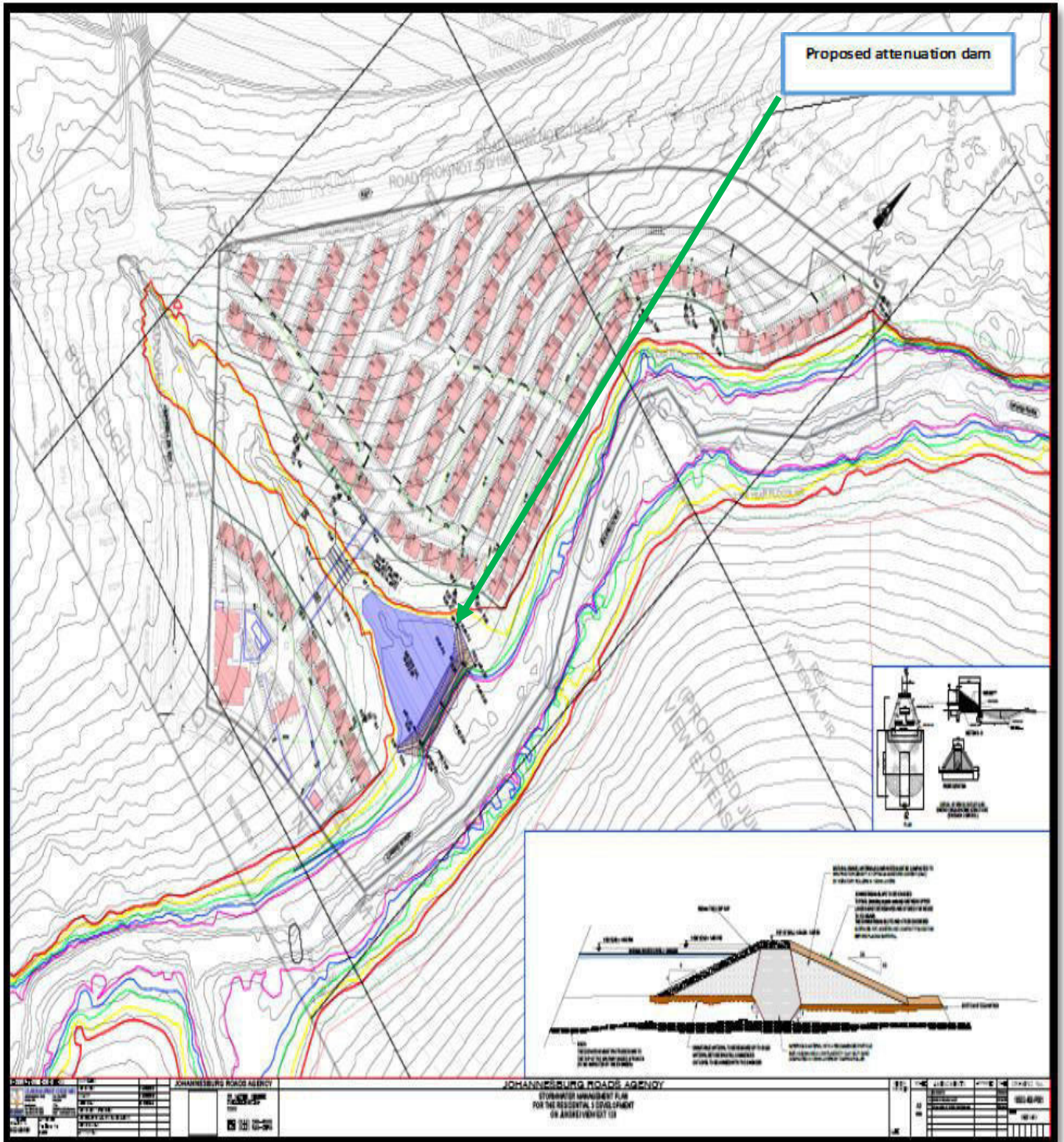


Figure 10: Storm Water Plan