



Comprehensive and Professional Solutions for all Heritage Related Matters

CK 2006/014630/23

VAT NO.: 4360226270

**FINAL REPORT ON THE INVESTIGATION, EXHUMATION AND
RELOCATION OF A NUMBER OF UNKNOWN & UNCLAIMED GRAVES
FROM PORTION 14 OF THE FARM OLIFANTSFONTEIN 402JR
IMPACTED ON BY TOWNSHIP DEVELOPMENT (STRAWBERRY FARM)
BETWEEN IRENE AND OLIFANTSFONTEIN IN TSHWANE**

For:

**M&T Development (Pty) Ltd
P.O.Box 39727
FAERIE GLEN
0043**

A. J. Pelser

Accredited member of ASAPA & Principal Investigator of Graves

REPORT: APAC021/48

June 2021

P.O.BOX 73703

LYNNWOOD RIDGE

0040

Tel: 083 459 3091

Fax: 086 695 7247

Email: apac.heritage@gmail.com

Member: AJ Pelser BA (UNISA), BA (Hons) (Archaeology), MA (Archaeology) [WITS]

©Copyright

The information contained in this report is the sole intellectual property of APELSER ARCHAEOLOGICAL CONSULTING cc. It may only be used for the purposes it was commissioned for by the client.

DISCLAIMER:

Although all possible care is taken to identify all sites of cultural importance during a survey of study areas, the nature of archaeological and historical sites are as such that it is always possible that hidden or subterranean sites could be overlooked during the study. APELSER ARCHAEOLOGICAL CONSULTING and its personnel will not be held liable for such oversights or for costs incurred as a result thereof.

A handwritten signature in black ink, appearing to be 'J. Pel' or similar, written in a cursive style.

SUMMARY

Anton Pelser (of APELSER ARCHAEOLOGICAL CONSULTING cc) was appointed by M&T Development (Pty) Ltd in conjunction with AVBOB Johannesburg to undertake the archaeological investigation, exhumation & relocation of a number of unknown and unclaimed graves located on a site located on Portion 14 of the farm Olifantsfontein 402JR, between Irene & Olifantsfontein, in the Greater Tshwane Municipality of Gauteng. The graves are to be impacted on by their so-called Strawberry Farm Township Development. A total of 104 graves (105 individuals) were identified on the site.

Of the 104 graves only 5 had formal headstones, with 3 of these containing partially legible inscriptions that provided names and dates. The names on these provided two surnames namely Nxumalo/Xumalo & Jali, and the dates 1936 (date of death) & 1977 (unsure). As the two graves with identifiable dates were located on opposite sides of the cemetery, it seems as if the age of the burials here range between the early 1930's and late 1970's. Most of the graves however remain unidentified in terms of the dates of death and burial. The bulk of the graves were only demarcated by stones and/or bricks and cement borders without formal headstones, while some had single unmarked stones as headstones.

Social consultation, which included the erection of Site Notices & Newspaper advertisements, undertaken between September 2018 & March 2020, was unable to trace any descendants or family members related to these graves. After delays mainly due to covid-19, a SAHRA permit was issued to APAC cc in April 2021. The physical exhumation & relocation work was conducted during the June 2021.

The archaeological portion of the work was carried out under SAHRA Permit No.: 3232 – Case ID No.: 16127.

This document discusses the results of the fieldwork and investigations carried out.

It is concluded that the work was done successfully and that the planned & ongoing Township Development actions in the area can continue, taking cognizance of the conclusions & recommendations put forward at the end of this document. All the graves and remains from the burials will be reburied in the Waterfall Municipal Cemetery.

CONTENTS

SUMMARY

CONTENTS

INTRODUCTION

AIMS

LEGISLATIVE REQUIREMENTS

METHODOLOGY

DESCRIPTION OF THE AREA & SITES

INVESTIGATION AND RELOCATION OF BURIALS

CONCLUSIONS AND RECOMMENDATIONS

REFERENCES

**FINAL REPORT ON THE INVESTIGATION, EXHUMATION AND
RELOCATION OF A NUMBER OF UNKNOWN & UNCLAIMED GRAVES
FROM PORTION 14 OF THE FARM OLIFANTSFONTEIN 402JR IMPACTED
ON BY TOWNSHIP DEVELOPMENT (STRAWBERRY FARM)
BETWEEN IRENE AND OLIFANTSFONTEIN IN TSHWANE**

INTRODUCTION

Anton Pelser (of APELSER ARCHAEOLOGICAL CONSULTING cc) was appointed by M&T Development (Pty) Ltd in conjunction with AVBOB Johannesburg to undertake the archaeological investigation, exhumation & relocation of a number of unknown and unclaimed graves located on a site located on Portion 14 of the farm Olifantsfontein 402JR, between Irene & Olifantsfontein, in the Greater Tshwane Municipality of Gauteng. The graves are to be impacted on by their so-called Strawberry Farm Township Development. A total of 104 graves (105 individuals) were identified on the site.

Of the 104 graves only 5 had formal headstones, with 3 of these containing partially legible inscriptions that provided names and dates. The names on these provided two surnames namely Nxumalo/Xumalo & Jali, and the dates 1936 (date of death) & 1977 (unsure). As the two graves with identifiable dates were located on opposite sides of the cemetery, it seems as if the age of the burials here range between the early 1930's and late 1970's. Most of the graves however remain unidentified in terms of the dates of death and burial. The bulk of the graves were only demarcated by stones and/or bricks and cement borders without formal headstones, while some had single unmarked stones as headstones.

Social consultation, which included the erection of Site Notices & Newspaper advertisements, undertaken between September 2018 & March 2020, was unable to trace any descendants or family members related to these graves. After delays mainly due to covid-19, a SAHRA permit was issued to APAC cc in April 2021. The physical exhumation & relocation work was conducted during the June 2021.

The archaeological portion of the work was carried out under SAHRA Permit No.: 3232 – Case ID No.: 16127.

AIMS

The main aims with the investigation and exhumation of the graves from the Strawberry Farm Grave Site (in this case) situated on Portion 14 of the farm Olifantsfontein 402JR were the following:

- (a) the detailed investigation of all possible graves & burials located on the site,
- (b) the successful exhumation and relocation of all the burials and remains recovered to the Waterfall Municipal Cemetery in Waterval City 16km south-west of the site.

LEGISLATIVE REQUIREMENTS

Aspects concerning the conservation of cultural resources are dealt with mainly in two acts. These are the National Heritage Resources Act (Act 25 of 1999) and the National Environmental Management Act (Act 107 of 1998).

1.1 The National Heritage Resources Act

According to the above-mentioned law the following is protected as cultural heritage resources:

- a. Archaeological artifacts, structures and sites older than 100 years
- b. Ethnographic art objects (e.g. prehistoric rock art) and ethnography
- c. Objects of decorative and visual arts
- d. Military objects, structures and sites older than 75 years
- e. Historical objects, structures and sites older than 60 years
- f. Proclaimed heritage sites
- g. **Grave yards and graves older than 60 years**
- h. Meteorites and fossils
- i. Objects, structures and sites of scientific or technological value.

Archaeology, palaeontology and meteorites

Section 35(4) of this act states that no person may, without a permit issued by the responsible heritage resources authority:

- a. destroy, damage, excavate, alter, deface or otherwise disturb any archaeological or paleontological site or any meteorite;
- b. destroy, damage, excavate, remove from its original position, collect or own any archaeological or paleontological material or object or any meteorite;
- c. trade in, sell for private gain, export or attempt to export from the Republic any category of archaeological or paleontological material or object, or any meteorite; or
- d. bring onto or use at an archaeological or paleontological site any excavation equipment or any equipment that assists in the detection or recovery of metals or archaeological and paleontological material or objects, or use such equipment for the recovery of meteorites.
- e. alter or demolish any structure or part of a structure which is older than 60 years as protected.

The above mentioned may only be disturbed or moved by an archaeologist, after receiving a permit from the South African Heritage Resources Agency.

Human remains

In terms of Section 36(3) of the National Heritage Resources Act, no person may, without a permit issued by the relevant heritage resources authority:

- a. destroy, damage, alter, exhume or remove from its original position of otherwise disturb the grave of a victim of conflict, or any burial ground or part thereof which contains such graves;
- b. destroy, damage, alter, exhume or remove from its original position or otherwise disturb any grave or burial ground older than 60 years which is situated outside a formal cemetery administered by a local authority; or
- c. bring onto or use at a burial ground or grave referred to in paragraph (a) or (b) any excavation, or any equipment which assists in the detection or recovery of metals.

Human remains that are less than 60 years old are subject to provisions of the Human Tissue Act (Act 65 of 1983) and to local regulations. Exhumation of graves must conform to the standards set out in the **Ordinance on Excavations (Ordinance no. 12 of 1980)** (replacing the old Transvaal Ordinance no. 7 of 1925).

Permission must also be gained from the descendants (where known), the National Department of Health, Provincial Department of Health, Premier of the Province and local police. Furthermore, permission must also be gained from the various landowners (i.e. where the graves are located and where they are to be relocated) before exhumation can take place.

Human remains can only be handled by a registered undertaker or an institution declared under the **Human Tissues Act (Act 65 of 1983 as amended)**.

Unidentified/unknown graves are also handled as older than 60 until proven otherwise.

1.2 The National Environmental Management Act

This act states that a survey and evaluation of cultural resources must be done in areas where development projects, that will change the face of the environment, will be undertaken. The impact of the development on these resources should be determined and proposals for the mitigation must be made.

METHODOLOGY

Background information – The results of previous work carried out in the area (Heritage Impact Assessments) are normally used to provide background to the project and the graves identified and recorded in the area under discussion.

Mapping and Photographing – Aerial images (Google Earth) of the area, providing a location for the area and the grave site, are produced. Photographs of the area, as well as each individual grave/burial, any skeletal remains and grave goods that are recovered are also taken as part of the documentation process. A detailed map for the Strawberry Farm grave site and the graves on it were also drawn and will be included in the report.

Investigation and Exhumation – Normally graves are exhumed by hand using picks and shovels and where possible remains are documented photographically in position. Remains are then removed, placed in coffins, described and documented. In cases where no skeletal remains or cultural material are found in a burial a soil sample is taken for reburial as standard practice. In this case, an earthmoving machine (TLB) was used to open up the trenches up to the level of the burial pits and to assist with removing of soil overburden and remains.

Burial Forms – A Burial form for each individual burial is normally completed. Basic information on burial position, grave goods, general preservation and other general observations are included on these forms. These forms will not be reproduced in this report while the information on the burials will be summarized and interpreted at the end. The forms will however be archived for future reference if required. A separate file containing detailed photographs of all the graves and the remains from the each of these are provided as well.

DESCRIPTION OF THE AREA AND SITE

The Strawberry Farm Grave Site is located on Portion 14 of the original farm Olifantsfontein 402JR, between Irene & Olifantsfontein, in the Greater Tshwane Municipality of Gauteng. The site will be impacted on by M&T Development's planned Township Development on the property on which the grave site is located.

A total of 104 graves (105 individuals) were identified on the site. Of the 104 graves only 5 had formal headstones, with 3 of these containing partially legible inscriptions that provided names and dates. The names on these provided one surname namely Nxumalo/Xumalo, and the dates 1936 (date of death) & 1977 (unsure). As the two graves with identifiable dates were located on opposite side of the cemetery, it seems as if the age of the burials here range between the early 1930's and late 1970's. Most of the graves however remain unidentified in terms of the dates of death and burial. The bulk of the graves were only demarcated by stones and/or bricks and cement borders without formal headstones, while some had single unmarked stones as headstones. All the graves were relocated to the Waterfall Municipal Cemetery in Waterval City, approximately 16km south-west of the site.

GPS Location of the Strawberry Farm Grave Site: S25 55 40.68 E28 14 06.89
Waterfall Cemetery Location (approximate): S26 02 30.73 E28 08 15.51

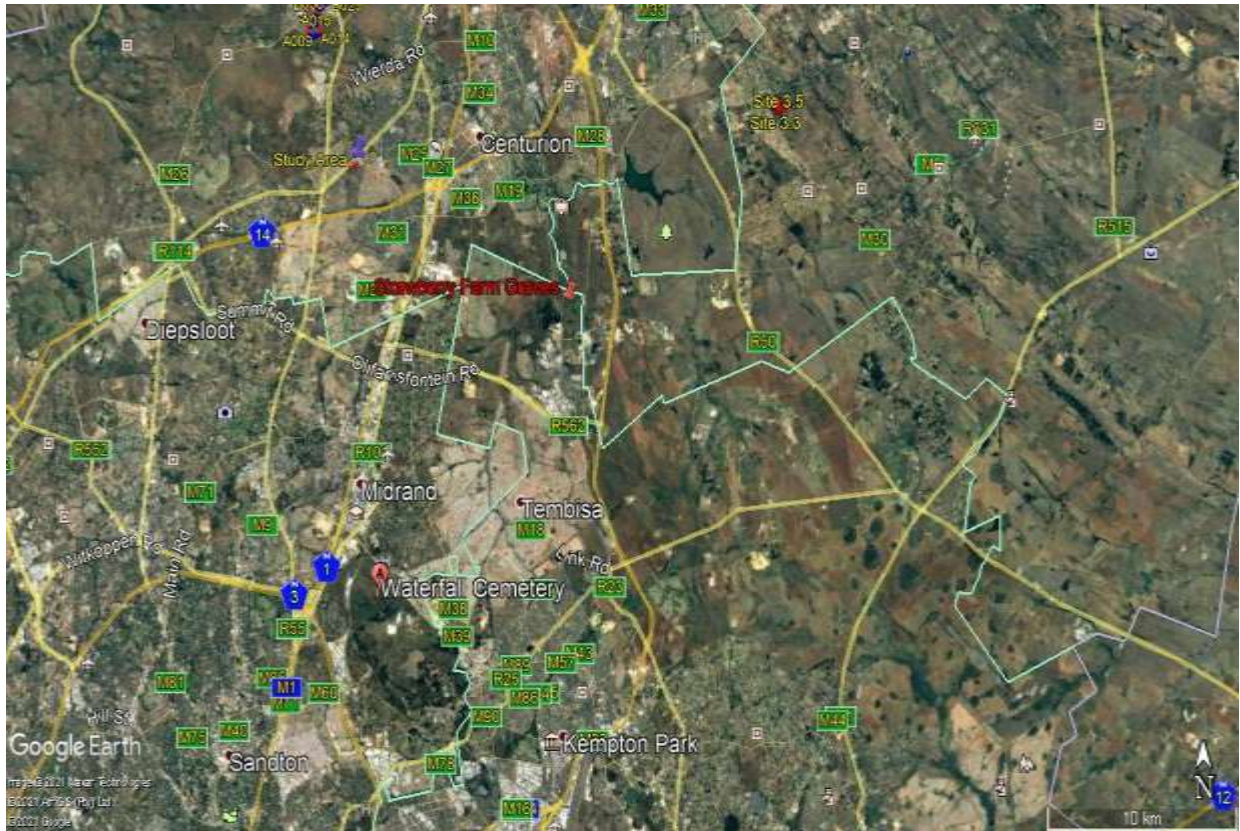


Figure 1: General location of the Strawberry Farm Grave Site (in red) in relation to Waterfall Cemetery (Google Earth 2021).



Figure 2: Closer view of Strawberry Farm Grave Site Location (Google Earth 2020).



Figure 3: Detailed view of grave site showing the individual graves (Google Earth 2020).



Figure 3: General view of the grave site.



Figure 4: General view of the site after completion of the exhumation & relocation work in June 2021.

INVESTIGATION AND RELOCATION OF THE BURIALS

A total of 104 graves (105 individuals) were identified on the site. One of the graves (SF40) contained the remains of two infant burials bringing the total to 105 individuals. Of the 104 graves only 5 had formal headstones, with 3 of these containing partially legible inscriptions that provided names and dates. Two graves with headstones provided the dates of 1936 & 1977. The 1936 one is clearly indicated as date of death, and although the 1977 date does not indicate if it is date of death it is assumed as such. With the two graves with identifiable dates located on opposite sides of the cemetery, it seems as if the age of the burials here range between the early 1930's and late 1970's. Most of the graves however remain unidentified in terms of the dates of death and burial. The bulk of the graves were only demarcated by stones and/or bricks and cement borders without formal headstones, while some had single unmarked stones as headstones.

Social consultation, which included the erection of Site Notices & Newspaper advertisements, undertaken between September 2018 & March 2020, was unable to trace any descendants or family members related to these graves. After delays mainly due to covid-19, a SAHRA permit was issued to APAC cc in April 2021. The physical exhumation & relocation work was conducted during the June 2021.

The following families were represented by the graves (based on headstones with partially legible inscriptions):

1. *Nxumalo/Xumalo*

Grave SF64 was that of **Nhlakazeni Amos Nxumalo**. No dates of birth or death are indicated.

Grave SF103 was that of **Esta Xumalo**. The date 1.10.1977 is indicated and it is assumed to be the date of death.

2. *Jali*

Grave SF28 was that of **Alina R.Jali**. No dates or other information could be seen on the headstone inscription.

The headstones of these three individual were on slate with the inscriptions carved into them. Because of factors such as veld fires and other natural exposure these do crack and fracture, with parts of the headstones where these inscriptions would have been not preserved anymore. Two other graves had headstones. One was a formal cement headstone in the form of a cross, while the other was a metal plaque. Both had no inscriptions on them.



Figure 5: The slate headstone on the grave of Alina R. Jali (Grave SF28). She died on the 16th of April 1936.



Figure 6: Cement cross on grave SF55.



**Figure 7: The slate headstone from the grave of Nhlakazeni Amos Nxumalo
Grave SF64.**



Figure 8: Grave SF102 had a metal plaque as headstone.



Figure 9: The slate headstone of Esta Xumalo with the date 1.10.1977 (Grave SF103).

In general the preservation of human skeletal remains from the burials was poor to fair with most of the skeletons being incomplete. A few were better preserved and nearly complete. The remains from baby/infant and juvenile graves were nearly all incomplete, with a large number not preserved at all. In cases where no remains were found in known graves soil samples were taken for reburial purposes as is standard practice. Grave goods found included coffin wood pieces, coffin plastic, coffin handles, nails and screws, as well as pieces (some small fragments & other larger sections) of corrugated iron sheeting that were placed on top of the burial pits and coffins. Personal items from the burials were few, but included fragments of clothing, blankets, baby dummies & feeding bottles, strings of beads and a copper bangle. Two artificial (metal) legs were recovered from one of the burials (SF99). In a number of cases the human remains were found still wrapped in coffin plastic and blankets relatively intact, and in these individual cases these were not opened up and photographed as such. Most of these are however the remains of either still-born infants or small babies. Evidence of termite activity seen in some of the burial pits also played a role in the preservation of remains.

A number of the graves had glass bottles (medicinal & alcoholic), drinking glasses, porcelain plates and saucers and coffee mugs and tea cups, as well as other ceramic vessels placed on top of them. These were also removed and reburied with each burial.

A total of **45** graves contained no skeletal remains at all and soil samples were taken from them for reburial purposes. Some of these burials did contain some other items such as coffin plastic, corrugated iron sheeting, coffin wood and handles.

Of the total of **105** confirmed graves/burials the following regarding age & sex can be provided:

- (a) **Infants/Babies/Juveniles:** 67 (or 67.61% of the deceased individuals buried here)
- (b) **Adults:** 34 (or 32.39% of the deceased individuals buried here)
- (c) **Males:** 11
- (d) **Females:** 7

The ages and sex of the individuals were based on the size of graves as packed on the ground surface, the remains recovered, clothing items found, headstone inscriptions and in cases were possible using skeletal characteristics found on the pelvic and cranial remains of individuals.

The graves from which the soil samples were recovered were mainly those of infants or children (based on the size of the stone-packed graves on the surface) although some could be of adults as well. With children (due to a variety of factors) sometimes no skeletal remains are preserved and only material such as coffin remains or clothing is found.

The graves were all dug up to the level of the original bedrock or up to the level where remains were found and the remains then excavated and removed by hand and then placed in the coffins for reburial. Sterile, undisturbed layers were characterized by layers of dolomite/stones, and gravel. On average the depth of the burial pits was between 1.20 and 1.50m below the surface level, with a few slightly deeper.

The graves were all laid out in an East/West direction, with the heads on the Western sides. Although the remains of coffins were found in many of the burials, it seems as if some individuals were buried wrapped only in plastic and/or blankets placed directly into the burial pits. All the graves were relocated to the Waterfall Municipal Cemetery in Waterval City, approximately 16km south-west of the site.

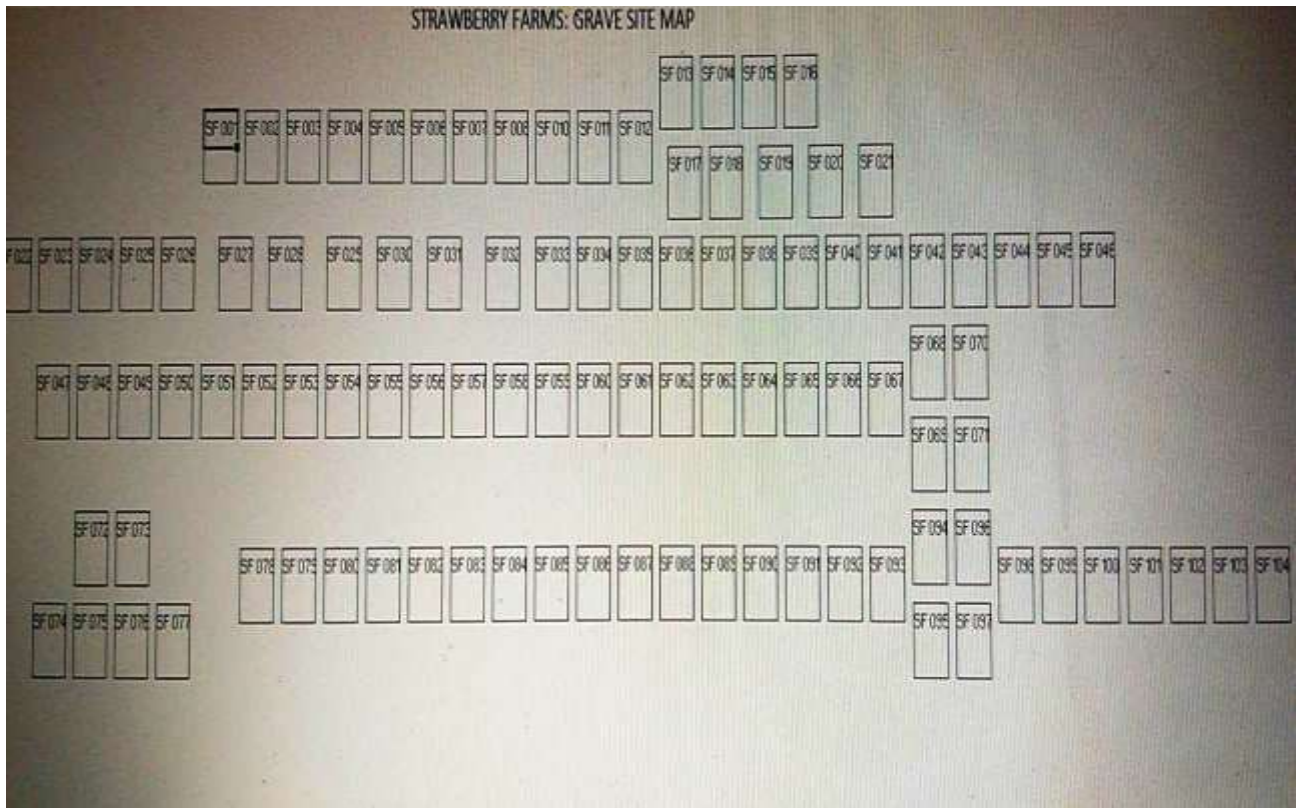


Figure 10: Map of the Strawberry Farm Grave Site with a schematic layout showing the position of each identified grave.

Each confirmed grave/burial will be discussed briefly below:

- SF001:** Stone-packed grave without headstone. The size of the grave indicates an infant/child burial. No human skeletal remains or other grave goods were recovered and a Soil Sample was taken for reburial purposes.
- SF002:** Stone-packed grave without headstone. The size of the grave indicates an infant/child burial. No human skeletal remains were recovered, although some pieces of corrugated iron sheeting were found in the burial pit. A Soil Sample was taken for reburial purposes.
- SF003.** Stone-packed grave without headstone. Porcelains cups, saucers and tea pot on grave. Found pieces of corrugated iron sheeting in the grave, as well as metal coffin handles. The fragmented remains of an Adult individual recovered.
- SF004:** Stone-packed grave without headstone. Glass jar and fragment of porcelain saucer on grave. Metal coffin handle found in burial pit as well as the fragmented remains of an Adult individual.

- SF005:** Stone-packed grave without headstone. Pieces of glass bottle (Carafino – wine?) on top of grave. Coffin wood fragments and a metal coffin handle piece found in burial pit. The fragmented skeletal remains of an Adult individual were recovered from the grave.
- SF006:** Grave with cement dressing. No headstone. The size of the grave indicated that an infant/baby was buried here. Besides pieces of corrugated iron sheeting, no other goods or skeletal remains were found. Soil sample taken for reburial purposes.
- SF007:** Grave with cement dressing. No headstone. The size of the grave indicated that an infant/baby was buried here. Besides plastic baby feeding bottles no other remains were found. Soil sample taken for reburial purposes.
- SF008:** Stone-packed grave without headstone. The size of the grave indicated that an infant/baby was buried here. No grave goods or skeletal remains were found. Soil sample taken for reburial purposes.
- SF009:** Stone-packed grave without headstone. The size of the grave indicated that an infant/baby was buried here. Some glass medicine bottles and a fish paste vessel were placed on top of the grave. Black plastic coffin wrapping was found in the burial pit, but no skeletal remains were preserved. Soil sample taken for reburial purposes.
- SF010:** Stone-packed grave without headstone. The size of the grave indicated that an infant/baby was buried here. The fragmented remains of a young infant were found still wrapped in white coffin plastic inside the burial pit. Besides corrugated iron sheeting over the burial pit no other grave goods were present.
- SF011:** Stone-packed grave without headstone. The size of the grave indicated that an infant/baby was buried here. A glass jar was found on top of the grave. Besides some white plastic coffin wrapping, no other grave goods or skeletal remains were present in the burial pit. Soil sample taken for reburial purposes.
- SF012:** Stone-packed grave without headstone. The size of the grave indicated that an infant/baby was buried here. Corrugated iron sheeting and white plastic coffin wrapping was found in the burial pit, but no skeletal remains were preserved. Soil sample taken for reburial purposes.
- SF013:** Stone-packed grave without headstone. The size of the grave indicated that an infant/baby was buried here. White plastic coffin wrapping, coffin handles, pieces of baby clothing (including a jersey) and a blue plastic dummy (for a boy?) was found in the burial pit, but no skeletal remains were preserved. Soil sample taken for reburial purposes.

- SF014:** Stone-packed grave without headstone. The size of the grave indicated that an infant/baby was buried here. A glass fish paste bottle/baby food bottle was placed on top of the grave. White plastic coffin wrapping, coffin handles, pieces of baby clothing, corrugated iron sheeting, coffin wood fragments and metal coffin decorations were found in the burial pit, but no skeletal remains were preserved. Soil sample taken for reburial purposes.
- SF015:** Stone-packed grave without headstone. The size of the grave indicated that an infant/baby was buried here. White plastic coffin wrapping, coffin handles, corrugated iron sheeting pieces, coffin wood fragments and the fragmented remains of a young infant were recovered from the burial.
- SF016:** Stone-packed grave without headstone. The size of the grave indicated that an infant/baby was buried here. Fragments of white plastic coffin wrapping, items of baby clothing and a blanket, a glass medicine bottle and a string of white beads were found in the burial pit, but no skeletal remains were preserved. Soil sample taken for reburial purposes.
- SF0017:** Stone-packed grave without headstone. The size of the grave indicated that an infant/baby was buried here. A number of glass bottles and jars were placed on top of the grave. White plastic coffin wrapping, corrugated iron sheeting and items of baby clothing (including a jersey) were found in the burial pit, but no skeletal remains were preserved. Soil sample taken for reburial purposes.
- SF018:** Stone-packed grave without headstone. The size of the grave indicated that an infant/baby was buried here. A number of glass medicine bottles and a jar were placed on top of the grave. White plastic coffin wrapping, coffin wood fragments and a white & blue striped baby jersey) were found in the burial pit, as well as the fragmented remains of a young infant.
- SF019:** Stone-packed grave without headstone. The size of the grave indicated that an infant/baby was buried here. No grave goods or any skeletal remains were recovered from the burial pit and a soil sample was taken for reburial purposes.
- SF020:** Stone-packed grave without headstone. The size of the grave indicated that an adult was buried here. A number of glass bottles and remains of a drinking glass decorated with metal wiring were placed on top of the grave. The fragmented and incomplete skeletal remains of a young adult individual were recovered from the burial.
- SF021:** Stone-packed grave without headstone. The size of the grave indicated that an adult was buried here. White coffin plastic wrapping and the fragmented and the nearly complete skeletal remains of an adult individual

were recovered from the burial. Based on the robustness of the long bone and thick brow ridges on the skull this could be the remains of an Adult Male.

- SF022:** Stone-packed grave without headstone. The size of the grave indicated that an infant/baby was buried here. Besides the remains of a baby blanket no other grave goods or any skeletal remains were recovered from the burial pit and a soil sample was taken for reburial purposes.
- SF023:** Stone-packed grave without headstone. The size of the grave indicated that an infant/baby was buried here. Corrugated iron sheeting was found in the burial pit, while a drinking glass and pieces of a porcelain tea cup was placed on top of the grave. No other grave goods or any skeletal remains were recovered from the burial pit and a soil sample was taken for reburial purposes.
- SF024:** Stone-packed grave without headstone. The size of the grave indicated that an infant/baby was buried here. A drinking glass was placed on top of the grave. No other grave goods or any skeletal remains were recovered from the burial pit and a soil sample was taken for reburial purposes.
- SF025:** Stone-packed grave without headstone. The size of the grave indicated that an infant/baby was buried here. No grave goods or any skeletal remains were recovered from the burial pit and a soil sample was taken for reburial purposes.
- SF026:** Stone-packed grave without headstone. The size of the grave indicated that an infant/baby was buried here. No grave goods or any skeletal remains were recovered from the burial pit and a soil sample was taken for reburial purposes.
- SF027:** Stone-packed grave without headstone. The size of the grave indicated that an infant/baby was buried here. Besides a small fragment of black plastic coffin wrapping no grave goods or any skeletal remains were recovered from the burial pit and a soil sample was taken for reburial purposes.
- SF028:** Stone-packed grave with a slate headstone. This was the grave of Alina R.Jali who passed away on the 16th of April 1936. Although the grave size seemed to indicate that of an adult burial, no skeletal remains or any grave goods were found in the burial pit. A soil sample was taken for reburial purposes.
- SF029:** Stone-packed grave without headstone. The size of the grave indicated that an infant/baby was buried here. No grave goods or any skeletal remains were recovered from the burial pit and a soil sample was taken for

reburial purposes. Evidence of termite activity was found in the burial pit and this would have contributed to the lack of preservation of any material.

- SF030:** Stone-packed grave without headstone. The size of the grave indicated that an infant/baby was buried here. No grave goods or any skeletal remains were recovered from the burial pit and a soil sample was taken for reburial purposes.
- SF031:** Stone-packed grave without headstone. The size of the grave indicated that an infant/baby was buried here. No grave goods or any skeletal remains were recovered from the burial pit and a soil sample was taken for reburial purposes.
- SF032:** Stone-packed grave without headstone. The size of the grave indicated that an adult was buried here. The fragmented and incomplete skeletal remains (mostly long bones) of an Adult individual were recovered from the burial. No other grave goods were present.
- SF033:** Stone-packed grave without headstone. The size of the grave indicated that an infant/baby was buried here. No grave goods or any skeletal remains were recovered from the burial pit and a soil sample was taken for reburial purposes.
- SF034:** Stone-packed grave without headstone. The size of the grave indicated that an infant/baby was buried here. No grave goods or any skeletal remains were recovered from the burial pit and a soil sample was taken for reburial purposes.
- SF035:** Stone-packed grave without headstone. The size of the grave indicated that an infant/baby was buried here. No grave goods or any skeletal remains were recovered from the burial pit and a soil sample was taken for reburial purposes.
- SF036:** Stone-packed grave without headstone. The size of the grave indicated that an infant/baby was buried here. A glass medicine bottle was found on top of the grave, while a fragment of a carpet or blanket in which the individual would have been wrapped was also found. No other grave goods or any skeletal remains were recovered from the burial pit and a soil sample was taken for reburial purposes.
- SF037:** Stone-packed grave without headstone. The size of the grave indicated that an infant/baby was buried here. The grave goods included only a piece of corrugated iron sheeting, while some long bone shafts of a young infant was the only skeletal remains recovered from the burial pits.

- SF038:** Stone-packed grave without headstone. The size of the grave indicated that an Adult individual was buried here. Corrugated iron sheeting was found covering the burial pit, while a metal coffin handle was also recovered. The fragmented and incomplete skeletal remains of an adult were found in the burial pit. Based on the pelvis (v-shaped sciatic notch) and robustness of the long bones this was probably an Adult Male individual. With a sawn off cranium this person had seemingly undergone an autopsy prior to being buried.
- SF039:** Stone-packed grave without headstone. The size of the grave indicated that an infant/baby was buried here. The remains were found still wrapped in white coffin plastic, with no evidence of a coffin found. The wrapping was not opened but the size indicated the burial of a young infant.
- SF040:** Stone-packed grave without headstone. The size of the grave indicated that an infant/baby was buried here. Two glass medicine bottles were found on top of the grave, while the remains of two infants were found in the burial pit. Both were still wrapped inside their white plastic coffin wrapping and they were not opened. Two small infants (possibly still-born) are represented by the remains.
- SF041:** Stone-packed grave without headstone. The size of the grave indicated that an infant/baby was buried here. A piece of coffin wood was found in the burial pit that also contained the still wrapped remains of a young infant (possibly still-born).
- SF042:** Stone-packed grave without headstone. The size of the grave indicated that an infant/baby was buried here. The burial pit contained the wrapped remains of a young infant (possibly still-born).
- SF043:** Stone-packed grave without headstone. The size of the grave indicated that an infant/baby was buried here. Plastic coffin wrapping and a piece of baby clothing was found in the burial pit, but no skeletal remains were preserved.
- SF044:** Stone-packed grave without headstone. The size of the grave indicated that an infant/baby was buried here. Glass bottles and porcelain fragments were found on top of the grave. White plastic coffin wrapping with the remains still inside was recovered from the burial pit, as well as items of baby clothing and a blanket.
- SF045:** Stone-packed grave without headstone. The size of the grave indicated that an infant/baby was buried here. Glass bottles, a large ceramic vessel and an enamel bowl were found on top of the grave. White plastic coffin wrapping with the remains still inside was recovered from the burial pit, as well as items of baby clothing, including a red colored jersey.

- SF046:** Stone-packed grave without headstone. The size of the grave indicated that an infant/baby was buried here. Glass medicine bottles and a cooldrink bottle were found on top of the grave. White plastic coffin wrapping, a baby blanket and a blue & white striped jersey was found in the burial pit. No skeletal remains were present.
- SF047:** Stone-packed grave without headstone. The size of the grave indicated that an infant/baby was buried here. Besides a fragment of canvass with nails attached (part of the inside lining of a coffin) no other grave goods or skeletal remains were found. A soil sample was taken for reburial purposes.
- SF048:** Stone-packed grave without headstone. The size of the grave indicated that an Adult was possibly buried here. No grave goods or any skeletal remains were found and a soil sample was again taken for reburial purposes.
- SF049:** Stone-packed grave without headstone. The size of the grave indicated that an infant/baby was buried here. No grave goods or any skeletal remains were found and a soil sample was taken for reburial purposes.
- SF050:** Stone-packed grave without headstone. The size of the grave indicated that an Adult was possibly buried here. A glass bottle was found on top of the grave. The fragmented and incomplete skeletal remains of an adult individual were recovered from the burial. Based on the oval-shaped sciatic notch on the pelvis this might have been an Adult Female.
- SF051:** Stone-packed grave without headstone. The size of the grave indicated that an Adult was possibly buried here. No grave goods were found and the very fragmented remains of an adult individual were recovered. Based on a fragment of mandible (lower jaw) without any teeth this seems to indicate an adult of fairly old age (senile).
- SF052:** Stone-packed grave without headstone. The size of the grave indicated that an infant/baby was buried here. Besides a small fragment of black plastic coffin wrapping no other grave goods or any skeletal remains were found and a soil sample was taken for reburial purposes.
- SF053:** Stone-packed grave without headstone. The size of the grave indicated that an infant/baby was buried here. No grave goods or any skeletal remains were found and a soil sample was taken for reburial purposes.
- SF054:** Stone-packed grave without headstone. The size of the grave indicated that an infant/baby was buried here. A glass medicine bottle was found on top of the grave, but no grave goods or any skeletal remains were found and a soil sample was taken for reburial purposes.

- SF055:** This grave was demarcated with cement and bricks and had a cement cross without any inscription. The size of the grave indicated that an adult was buried here. No grave goods or any human skeletal remains were however found and a soil sample was taken for reburial purposes.
- SF056:** Stone-packed grave without headstone. The size of the grave indicated that an Adult was possibly buried here. No grave goods were found and the very fragmented remains of an adult individual were recovered. Only long bone fragments and some cranial pieces were present in the burial pit.
- SF057:** Stone-packed grave without headstone. The size of the grave indicated that an Adult was possibly buried here. Besides small pieces of black plastic coffin wrapping, no other grave goods were found. The fragmented and incomplete remains of a young adult individual were recovered from the burial pit.
- SF058:** Stone-packed grave without headstone. The size of the grave indicated that an infant/baby was buried here. No grave goods or any skeletal remains were found and a soil sample was taken for reburial purposes.
- SF059:** Stone-packed grave without headstone. The size of the grave indicated that an infant/baby was buried here. No grave goods or any skeletal remains were found and a soil sample was taken for reburial purposes.
- SF60:** Stone-packed grave without headstone. The size of the grave indicated that an infant/baby was buried here. No grave goods or any skeletal remains were found and a soil sample was taken for reburial purposes.
- SF061:** Stone-packed grave without headstone. The size of the grave indicated that an Adult was possibly buried here. No grave goods were found and the fragmented and incomplete remains of an adult individual were recovered from the burial pit.
- SF062:** Stone-packed grave without headstone. The size of the grave indicated that an infant/baby was buried here. Besides a single metal coffin nail no other grave goods or any skeletal remains were found and a soil sample was taken for reburial purposes.
- SF063:** Stone-packed grave without headstone. The size of the grave indicated that an infant/baby was buried here. Although a small fragment of clothing was recovered from the burial pit no other grave goods or any skeletal remains were found and a soil sample was taken for reburial purposes.
- SF064:** Stone-packed grave with slate headstone with partial inscription visible. The grave of Nhlakazeni Amos Nxumalo. No date of death given. A small plastic snuff box found on top of grave. The remains were found still

intact white plastic coffin wrapping. The skeletal remains are those of an adult male and fairly well preserved. The apron (blue colored) of a pastor/priest was found inside the burial as well.

SF065: Stone-packed grave without headstone. The size of the grave indicated that an Adult was possibly buried here. The remains were found still wrapped inside white plastic coffin material, as well as a blanket. An adult male is represented based on the red, white and black striped pants found inside the wrapping.

SF066: Stone-packed grave without headstone. The size of the grave indicated that an Adult was possibly buried here. Grave goods included white plastic coffin wrapping, coffin handles and coffin screws. The human skeletal remains were fragmented and incomplete, but represented an adult male based on the v-shaped sciatic notch on the pelvis.

SF067: Stone-packed grave without headstone. The size of the grave indicated that an Adult was possibly buried here. Grave goods found included coffin wood fragments, white plastic coffin wrapping and corrugated iron sheeting on the burial pit. The skeletal remains were found still wrapped inside the coffin plastic. Based on the white, blue and red striped skirt the remains are those of an adult female, while the oval-shaped sciatic notch on the pelvis and the gracile long bones seem to confirm this.

SF068: Stone-packed grave without headstone. The size of the grave indicated that an infant/baby was buried here. Other than a small piece of white plastic coffin wrapping no other grave goods were found in the burial. Small fragments of longbone shafts of a small infant/baby were the only skeletal remains recovered.

SF069: Stone-packed grave without headstone. The size of the grave indicated that an infant/baby was buried here. The remains were found still intact and wrapped in pink plastic coffin wrapping and a blanket. The wrapping was not opened but the burial is clearly that of a small infant.

SF070: Stone-packed grave without headstone. The size of the grave indicated that an infant/baby was buried here. A porcelain coffee mug was found on top of the grave. Besides pieces of corrugated iron sheeting found covering the burial no other grave goods or any skeletal remains were found and a soil sample was taken for reburial purposes.

SF071: Stone and cement rubble packed grave without headstone. The size of the grave indicated that an infant/baby was buried here. Pieces of metal coffin decorative panels were found together with the still fairly intact coffin of an infant. The coffin was not opened.

- SF072:** Stone-packed grave without headstone. The size of the grave indicated that an infant/baby was buried here. Coffin plastic wrapping, coffin wood fragments, items of clothing (including a baby jersey) and the fragmented skeletal remains of a small infant was recovered from the burial pit.
- SF073:** Stone-packed grave without headstone. The size of the grave indicated that an infant/baby was buried here. Two glass bottles and the ceramic lid of a jar was found on top of the grave. The remains of a young infant/child were found still wrapped inside white plastic coffin wrapping inside the burial pit.
- SF074:** Stone-packed grave without headstone. The size of the grave indicated that an infant/baby was buried here. Coffin plastic wrapping fragments were found as well as two long bones of a small infant.
- SF075:** Stone-packed grave without headstone. The size of the grave indicated that an infant/baby was buried here. Coffin plastic wrapping fragments were found as well as the fragmented and incomplete skeletal remains of a young child. The mandible found in the burial had some deciduous teeth, with a few still un-erupted, possibly indicating a child aged around 4 to 6 years of age or slightly older.
- SF076:** Stone-packed grave without headstone. The size of the grave indicated that an infant/baby was buried here. Corrugated iron sheeting was found covering the burial pit, while the remains were still wrapped in coffin plastic. Items of baby clothing (including a jersey) and a blanket was recovered, but the remains were not opened in the wrapped plastic.
- SF077:** Stone-packed grave without headstone. The size of the grave indicated that an infant/baby was buried here. A white plastic fertilizer bag was found on top of corrugated iron sheeting that covered the burial pit. An intact coffin wrapped in white coffin plastic was found in the burial, representing a small infant individual. The coffin was not opened and removed complete from the burial pit.
- SF078:** Stone-packed grave without headstone. The size of the grave indicated that an Adult was possibly buried here. A small glass saucer was found on top of the grave. Grave goods included pieces of white plastic coffin wrapping, coffin wood fragments and coffin handles. The incomplete skeletal remains of an adult person was recovered and based on the robust longbones, as well as pelvis and pronounced brow ridges this was most likely an adult male individual buried here.
- SF079:** Stone-packed grave without headstone. The size of the grave indicated that an Adult was possibly buried here. Two drinking glasses was found on top of the grave. No other graves goods were recovered and the

remains were found still intact inside a fairly well preserved coffin (pressed wood) wrapped in white plastic. The coffin was not opened but the remains seem to indicate a juvenile or young adult individual based on the size of the coffin.

- SF080:** Stone-packed grave without headstone. The size of the grave indicated that an infant/baby was buried here. A glass jar was found on top of the grave. The remains of an infant (possibly still-born) was found still intact and wrapped in white coffin plastic in the burial and was removed unopened from the grave.
- SF081:** Stone-packed grave without headstone. The size of the grave indicated that an infant/baby was buried here. No grave goods or any skeletal remains were found and a soil sample was taken for reburial purposes.
- SF082:** Stone-packed grave without headstone. The size of the grave indicated that an infant/baby was buried here. No grave goods or any skeletal remains were found and a soil sample was taken for reburial purposes.
- SF083:** Stone-packed grave without headstone. The size of the grave indicated that an infant/baby was buried here. No grave goods or any skeletal remains were found and a soil sample was taken for reburial purposes.
- SF084:** Stone-packed grave without headstone. The size of the grave indicated that an infant/baby was buried here. No grave goods or any skeletal remains were found and a soil sample was taken for reburial purposes.
- SF085:** Stone-packed grave without headstone. The size of the grave indicated that an infant/baby was buried here. Besides corrugated iron sheeting on the burial pit and plastic coffin wrapping no grave goods or any skeletal remains were found and a soil sample was taken for reburial purposes.
- SF086:** Stone-packed grave without headstone. The size of the grave indicated that an infant/baby was buried here. No grave goods or any skeletal remains were found and a soil sample was taken for reburial purposes.
- SF087:** Stone-packed grave without headstone. The size of the grave indicated that an infant/baby was buried here. No grave goods or any skeletal remains were found and a soil sample was taken for reburial purposes.
- SF088:** Stone-packed grave without headstone. The size of the grave indicated that an infant/baby was buried here. White plastic coffin wrapping and coffin screws were recovered, as well as items of baby clothing. Fragmented skeletal remains (mainly longbones) of a small infant were found in the burial.

- SF089:** Stone-packed grave without headstone. The size of the grave indicated that an infant/baby was buried here. No grave goods or any skeletal remains were found and a soil sample was taken for reburial purposes.
- SF090:** Stone-packed grave without headstone. The size of the grave indicated that an Adult was possibly buried here. A piece of a porcelain saucer was found on top of the grave. Coffin plastic as well as clothing pieces and a blanket were recovered with the fragmented skeletal remains of an adult individual. Based on the robust longbones and the v-shaped sciatic notch on the pelvis this seems to have been an adult male individual buried here.
- SF091:** Stone-packed grave without headstone. The size of the grave indicated that an Adult was possibly buried here. Plastic coffin wrapping and a strand of copper wire was found together with the fragmented remains of an adult individual. Based on the v-shaped sciatic notch on the pelvis this was likely an adult male.
- SF092:** Stone-packed grave without headstone. The size of the grave indicated that an Adult was possibly buried here. Coffin plastic, pieces of clothing/blanket was recovered from the burial. The skeletal remains found seem to represent that of an adult female based on the oval-shaped sciatic notch on the pelvis. With the teeth still in very good condition and not worn down much this was likely a young adult individual. The person also had an autopsy with the cranium top sawn off.
- SF093:** Stone-packed grave without headstone. The size of the grave indicated that an Adult was possibly buried here. Coffin plastic, coffin wood fragments and the remains of a blanket was found together with the skeletal remains of an adult individual. The v-shaped sciatic notch on the pelvis seems to indicate a male person.
- SF094:** Brick-packed grave without headstone. Size indicates that an adult was buried here. A number of porcelain coffee mugs, tea cups, saucers, tea pot and a broken glass vessel was found on top of the grave. The skeletal remains was found still intact in white plastic wrapping, while fragments of a green colored blanket was also found in the burial. The oval-shaped sciatic notch on the pelvis is characteristic of a female individual.
- SF095:** Cement demarcated grave without headstone. A number of glass and ceramic/porcelain glasses and other items were found on top of the grave. The fragmented and incomplete skeletal remains of an adult individual were recovered from the burial pit.
- SF096:** Stone-packed grave without headstone. The size of the grave indicated that an Adult was possibly buried here. A number of glass bottles and drinking glasses were found on top of the grave. No other grave goods

were found. The fragmented remains of a possible adult female were recovered. The oval-shaped sciatic notch on the pelvis, as well as gracile longbones seems to indicate this.

- SF097:** Stone-packed grave without headstone. The size of the grave indicated that an infant/baby was buried here. Corrugated iron sheeting was found covering the burial pit. A fairly intact pressed wood coffin in white plastic wrapping was recovered, representing the remains of a young infant. The coffin was not opened up to document the remains.
- SF098:** Stone-packed grave without headstone. The size of the grave indicated that an Adult was possibly buried here. Plastic coffin wrapping was found, while a copper bangle was also recovered. The remains were that of an adult individual and most likely female based on the oval-shaped sciatic notch on the pelvis. This individual also had an autopsy with the cranial top sawn off.
- SF099:** Stone-packed grave without headstone. The size of the grave indicated that an Adult was possibly buried here. The remains were found intact still wrapped in white coffin plastic. An adult individual is represented. Two iron artificial legs were also found in the burial pit next to the wrapped remains.
- SF100:** Stone-packed grave without headstone. The size of the grave indicated that an Adult was possibly buried here. The remains were found intact still wrapped in white coffin plastic. An adult individual is represented. Some coffin wood fragments were also recovered.
- SF101:** Graves packed with asbestos roof tiles. The remains of an infant/baby were found still wrapped in plastic in the burial pit.
- SF102:** Stone-packed grave with metal plaque as headstone. No inscription was visible. The size of the grave indicated that an Adult was possibly buried here. A glass jar and plastic snuff container was found on top of the grave. Coffin plastic was found, with the remains wrapped in a blanket. The skeletal remains were fragmented but represented an adult person. This individual also had an autopsy with the cranial top sawn off.
- SF103:** Cement demarcated grave with a slate headstone. The grave of Esta Xumalo 1.10.1977. Corrugated iron sheeting, plastic coffin wrapping, coffin wood fragments, a blanket and clothing remains were found. The skeletal remains were fragmented and represented those of an adult female.
- SF104:** Stone-packed grave with metal plaque as headstone. No inscription was visible. The size of the grave indicated that an Adult was possibly buried

here. Corrugated iron sheeting was found covering the burial pit. The remains were found intact still wrapped inside what seems to have been a fairly good coffin (casket). The remains were those of an adult individual.

PHOTOS OF THE INDIVIDUAL GRAVES/BURIALS AND THE CULTURAL MATERIAL AND SKELETAL REMAINS RECOVERED WILL NOT BE INCLUDED IN THE REPORT AND WILL BE PROVIDED IN A SEPARATE FILE FOR INFORMATION AND PERUSAL.

CONCLUSIONS AND RECOMMENDATIONS

Anton Pelser (of APELSER ARCHAEOLOGICAL CONSULTING cc) was appointed by M&T Development (Pty) Ltd in conjunction with AVBOB Johannesburg to undertake the archaeological investigation, exhumation & relocation of a number of unknown and unclaimed graves located on a site located on Portion 14 of the farm Olifantsfontein 402JR, between Irene & Olifantsfontein, in the Greater Tshwane Municipality of Gauteng. The graves are to be impacted on by their so-called Strawberry Farm Township Development. A total of 104 graves (105 individuals) were identified on the site.

Of the 104 graves only 5 had formal headstones, with 3 of these containing partially legible inscriptions that provided names and dates. The names on these provided two surnames namely Nxumalo/Xumalo & Jali, and the dates 1936 (date of death) & 1977 (unsure). As the two graves with identifiable dates were located on opposite sides of the cemetery, it seems as if the age of the burials here range between the early 1930's and late 1970's. Most of the graves however remain unidentified in terms of the dates of death and burial. The bulk of the graves were only demarcated by stones and/or bricks and cement borders without formal headstones, while some had single unmarked stones as headstones.

Social consultation, which included the erection of Site Notices & Newspaper advertisements, undertaken between September 2018 & March 2020, was unable to trace any descendants or family members related to these graves. After delays mainly due to covid-19, a SAHRA permit was issued to APAC cc in April 2021. The physical exhumation & relocation work was conducted during the June 2021.

The archaeological portion of the work was carried out under SAHRA Permit No.: 3232 – Case ID No.: 16127.

It is concluded that the work was done successfully and that the planned & ongoing Township Development actions in the area can continue, taking cognizance of the conclusions & recommendations put forward at the end of this document. All the graves and remains from the burials will be reburied in the Waterfall Municipal Cemetery.

Finally, it needs to be stated that although extensive efforts are made to identify all possible graves in an area of impact, and to remove all possible remains from these graves, there is always a possibility that previously unknown and unmarked graves and

remains could be present in the area. Should any be uncovered during the development actions, work in the area should be stopped and an expert be called in to investigate and provide recommendations on the way forward.

REFERENCES

Location of Study Area and Grave Site: Google Earth 2020 & 2021.