

Karreebosch Renewable Wind Project

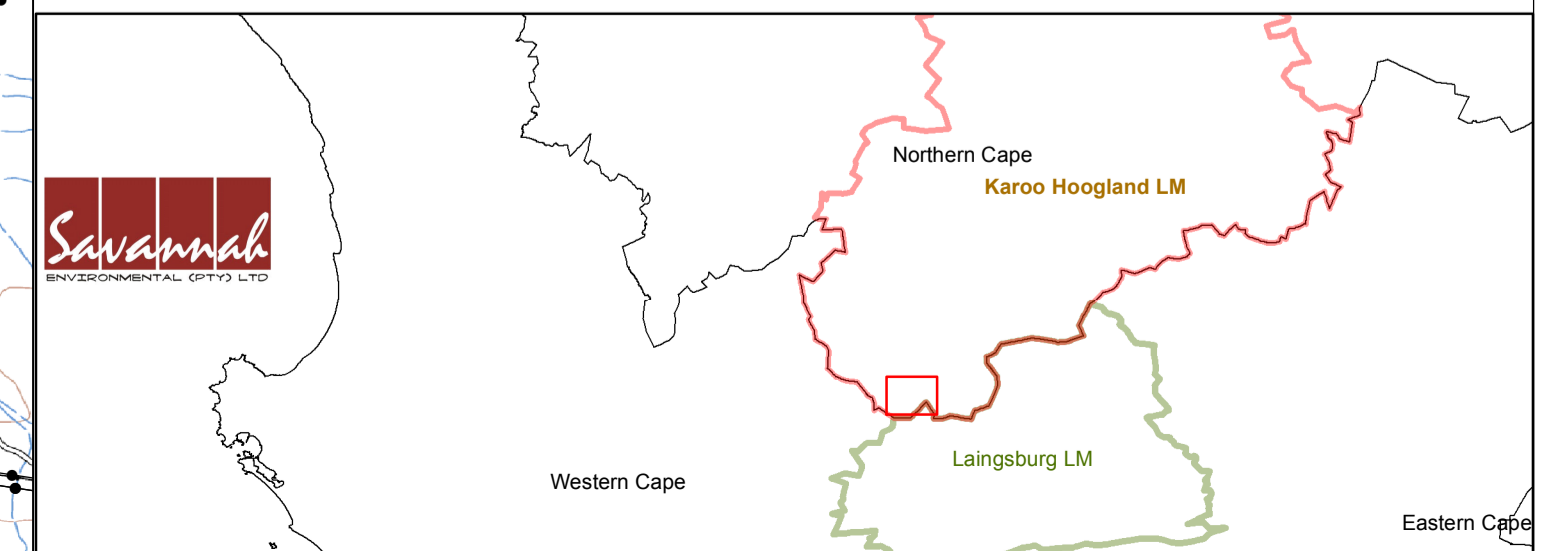
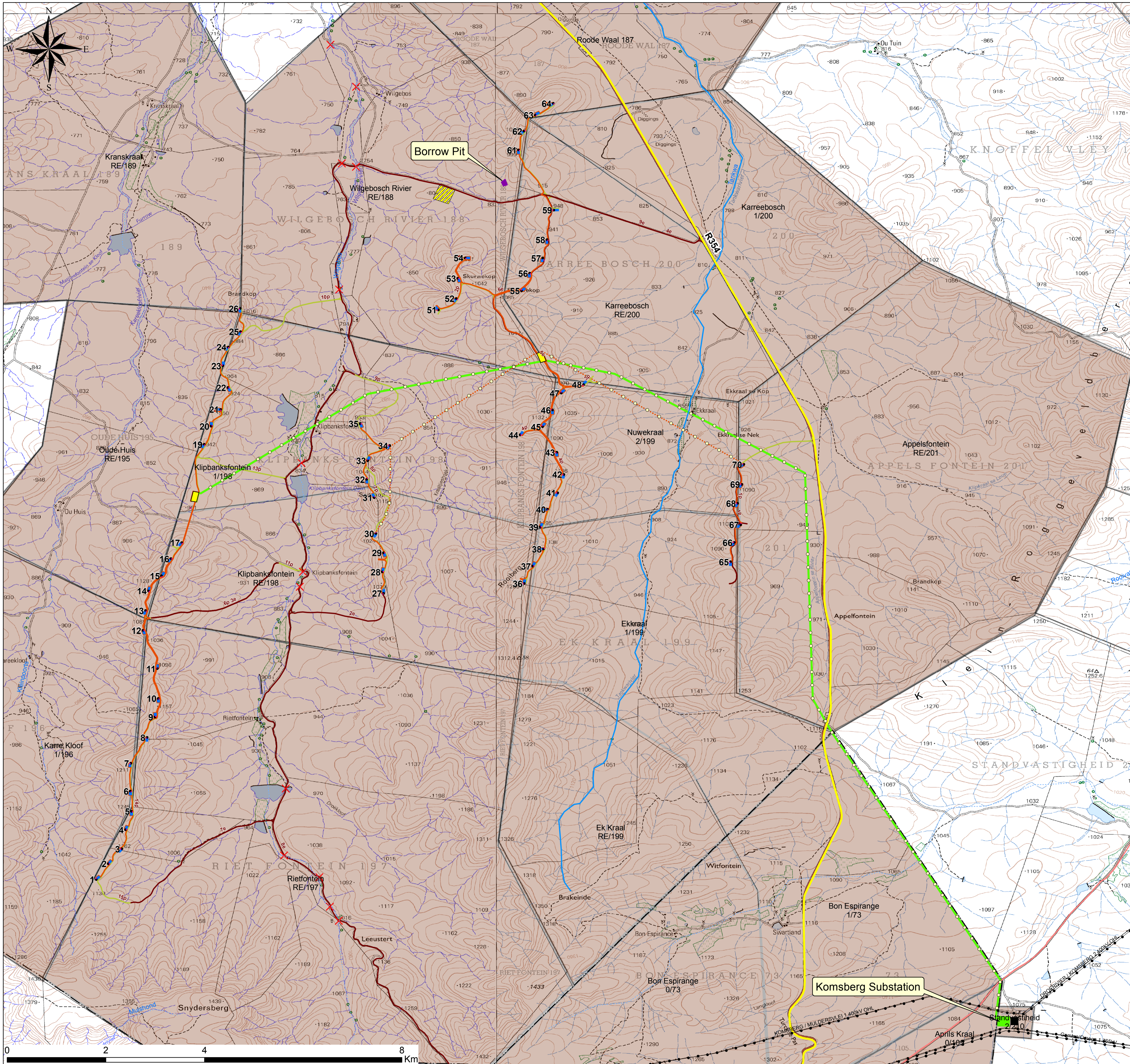
Layout Plan
(Mitigation strategy and preferred alternatives)

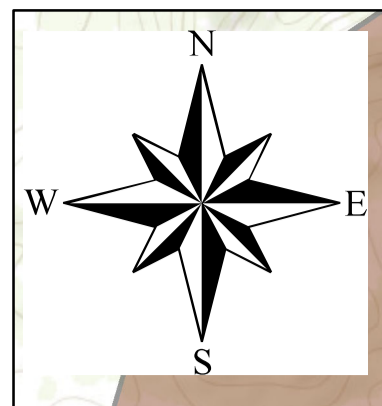
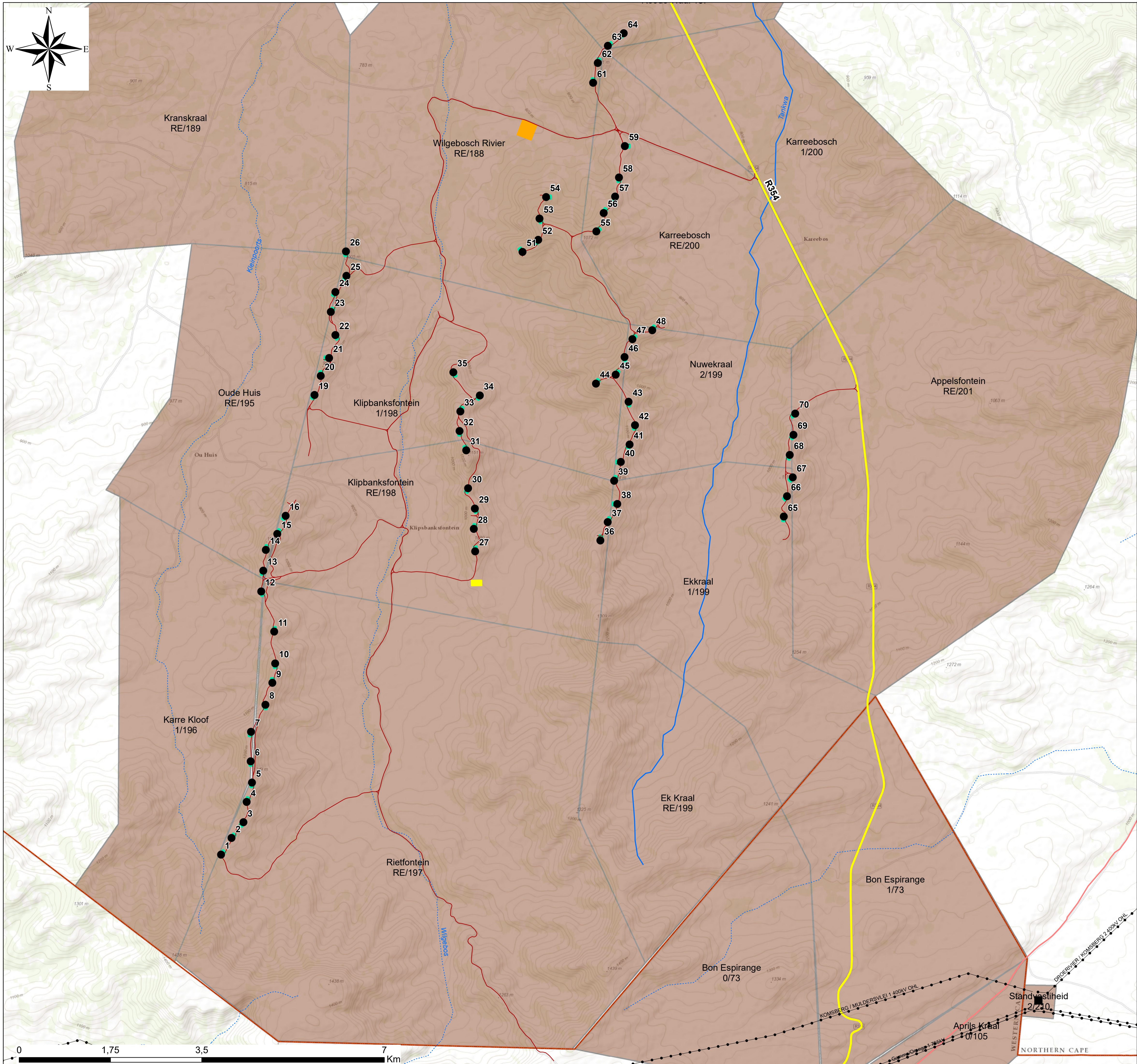
Legend

- Eskom 400kV Transmission Substation
- Existing Transmission Power Line
- Regional road
- Secondary road
- Perennial river
- Non - perennial river
- Karreebosch wind project site

Layout Plan:

- 66 Wind Turbine Position (25m Foundation)
- ✗ Watercourse crossings
- Turbine Mini Substations (2x2m ,up to 10x10m)
- Crane pad / Laydown area (70m X 50m)
- Alternative 2 - 2 x 33/132 Substations (with permanent buildings)
- 132-400kV substation at Komsberg
- Borrow Pit
- Temporary Construction Areas & Spoil Heaps (with temporary buildings)
- Pylons at 250m interval
- 33kV Underground cabling incl. cable trenches (1x1m)
- 33kV Overhead lines (incl. service road)
- Alternative 2 - 132kV Line (incl. service road)
- Existing Access Road to be upgraded (road width during construction and operation = up to 12m) (e)
- Planned Access Road (road width during construction and operation = up to 12m) (p)





Karreebosch Renewable Wind Project

Layout Map

Legend

- Eskom 400kV Transmission Substation
- Existing Transmission Power Line
- Regional road
- Secondary road
- Perennial River
- Non-perennial River
- ▭ Provincial Boundary
- ▭ Karreebosch Wind Project Site

Layout Plan:

- Turbine
- Access Roads
- ▭ Construction Camp
- ▭ Crane Pad
- ▭ Substation



Scale: 1:35 000
 Projection: LO21
 Map Ref.: Karreebosch P2 Amend - Layout Map - 24.07.18

