





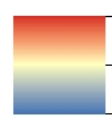








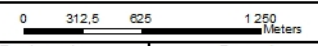
MAP 4: TOPOGRAPHY

Kranspan MRA Project

Legend

-  Haul Road
 -  Contours
 -  Opencast Area
 -  Mine Infrastructure
 -  Farm Portions
 -  Proposed Kranspan MRA
- ELEVATION (m)**
-  High : 1737
Low : 0
- ROAD NETWORK**
-  Main Road
 -  Secondary Road
 -  Railway Line
- RIVERS & STREAMS**
-  Non-perennial
 -  Perennial
 -  Wetlands

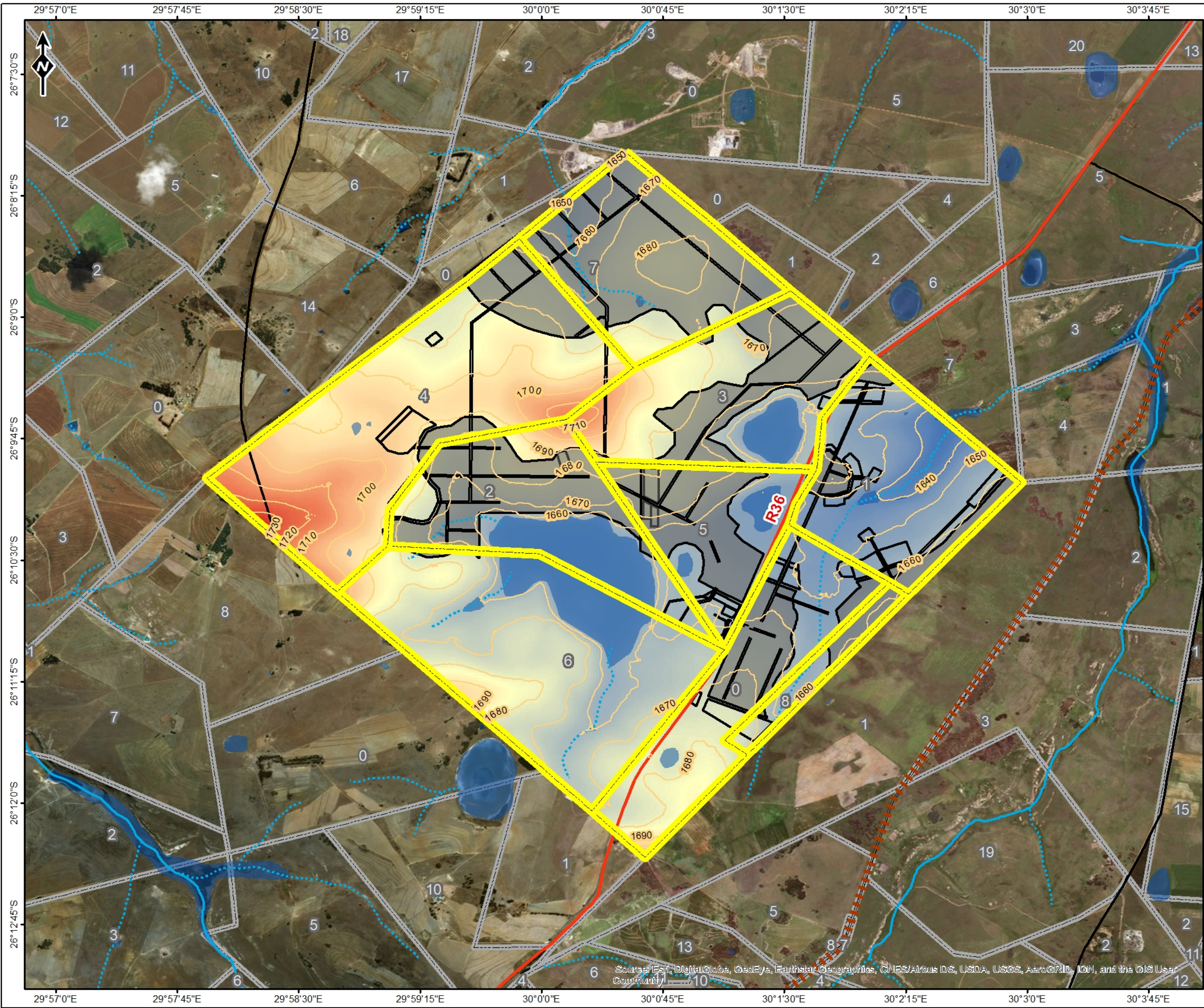
TOPOGRAPHY



Reviewed: P. Furniss Environmental Scientist	Drawn by: NH Cele GIS Specialist
--	--

Coordinate System: GCS WGS 1984
Datum: WGS 1984

	Scale: 1:40 000
	Version: Final
	Date: 2018/10/24

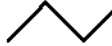






Source: Esri, DigitalGlobe, GeoEye, Earthstar Geographics, CNES/Airbus DS, USDA, USGS, AeroGRID, IGN, and the GIS User Community

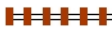
MAP 5: SOILS

Kranspan MRA Project

Legend

-  Haul Road
-  Opencast Area
-  Mine Infrastructure
-  Proposed Kranspan MRA
-  Farm Portions

ROAD NETWORK

-  Main Road
-  Secondary Road
-  Railway Line

RIVERS & STREAMS

-  Non-Perennial River
-  Perennial River
-  Wetlands

SOIL CHARACTERISTICS

- Avg Soil Depth**
- Clay % Top Soils**


SOILS

0 420 840 1 680 Meters	
Reviewed: P. Furniss Environmental Scientist	Drawn by: NH Cele GIS Specialist

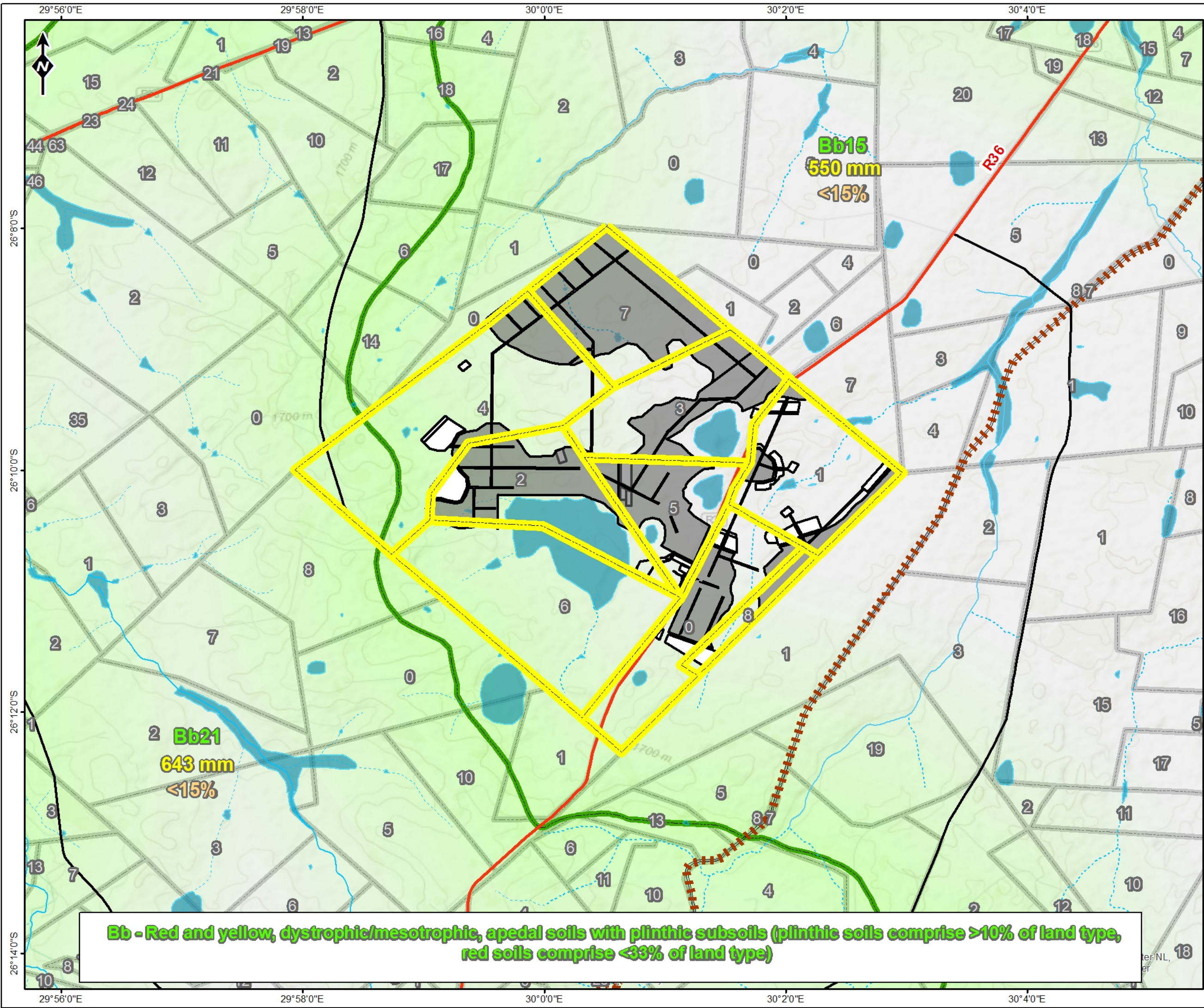
Coordinate System: GCS WGS 1984
Datum: WGS 1984



Scale: 1:53 625
Version: Final
Date: 2018/10/24

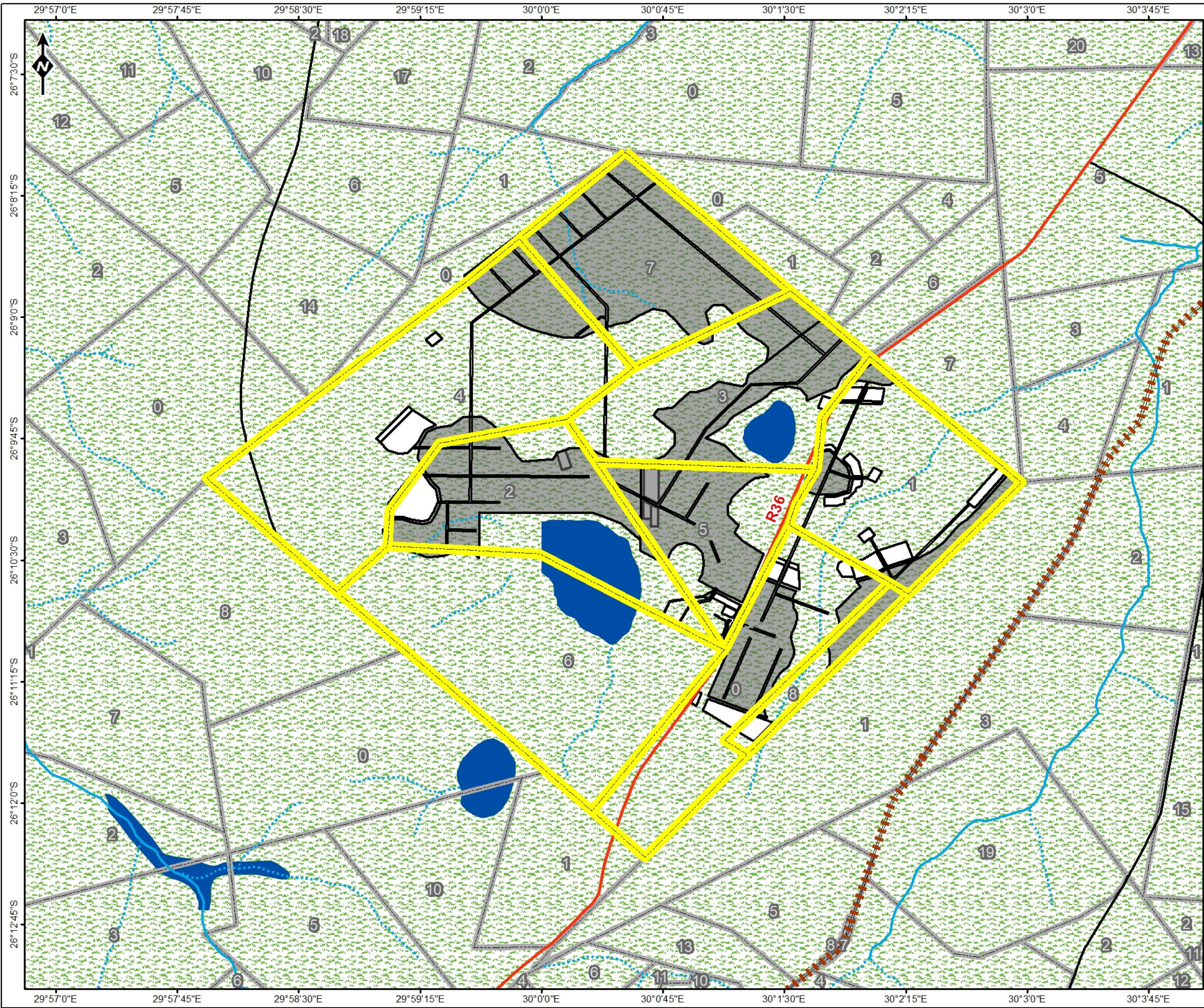


© OpenStreetMap (and contributors), CC-BY-SA



Bb - Red and yellow, dystrophic/mesotrophic, apedal soils with plinthic subsoils (plinthic soils comprise >10% of land type, red soils comprise <33% of land type)

MAP 6: VEGETATION



Kranspan MRA Project

Legend

- Haul Road
 - Opencast Area
 - Mine Infrastructure
 - Proposed Kranspan MRA
 - Farm Portions
- VEGETATION**
- Eastern Highveld Grassland
 - Eastern Temperate Freshwater Wetlands
- ROAD NETWORK**
- Main Road
 - Secondary Road
 - Railway Line
- RIVERS & STREAMS**
- Non-perennial
 - Perennial

VEGETATION

0 312,5 625 1250 Meters

Reviewed: P. Furniss Environmental Scientist	Drawn by: NH Cele GIS Specialist
Coordinate System: GCS WGS 1984 Datum: WGS 1984	

	Scale: 1:40 000
	Version: Final
	Date: 2018/10/24

