

Title: Figure 1:  
Locality Map: Region

Property Description:  
Erven 5530, 5645 & 1, Upington, //Khara Hals  
Municipality, Northern Cape Province

**LEGEND**

 Study Area

**MACROPLAN**  
Spatial & Environmental Planning  
Urban & Regional Development  
Infrastructure & Transport  
Environmental Services  
Local Government Services

**GORITZ**  
Local Government Services

P. O. Box 987  
Upington  
8800  
macroplan@mweb.co.za

Reference: **KHA/HOU/PAB/01**

Scale: 1: 75 000

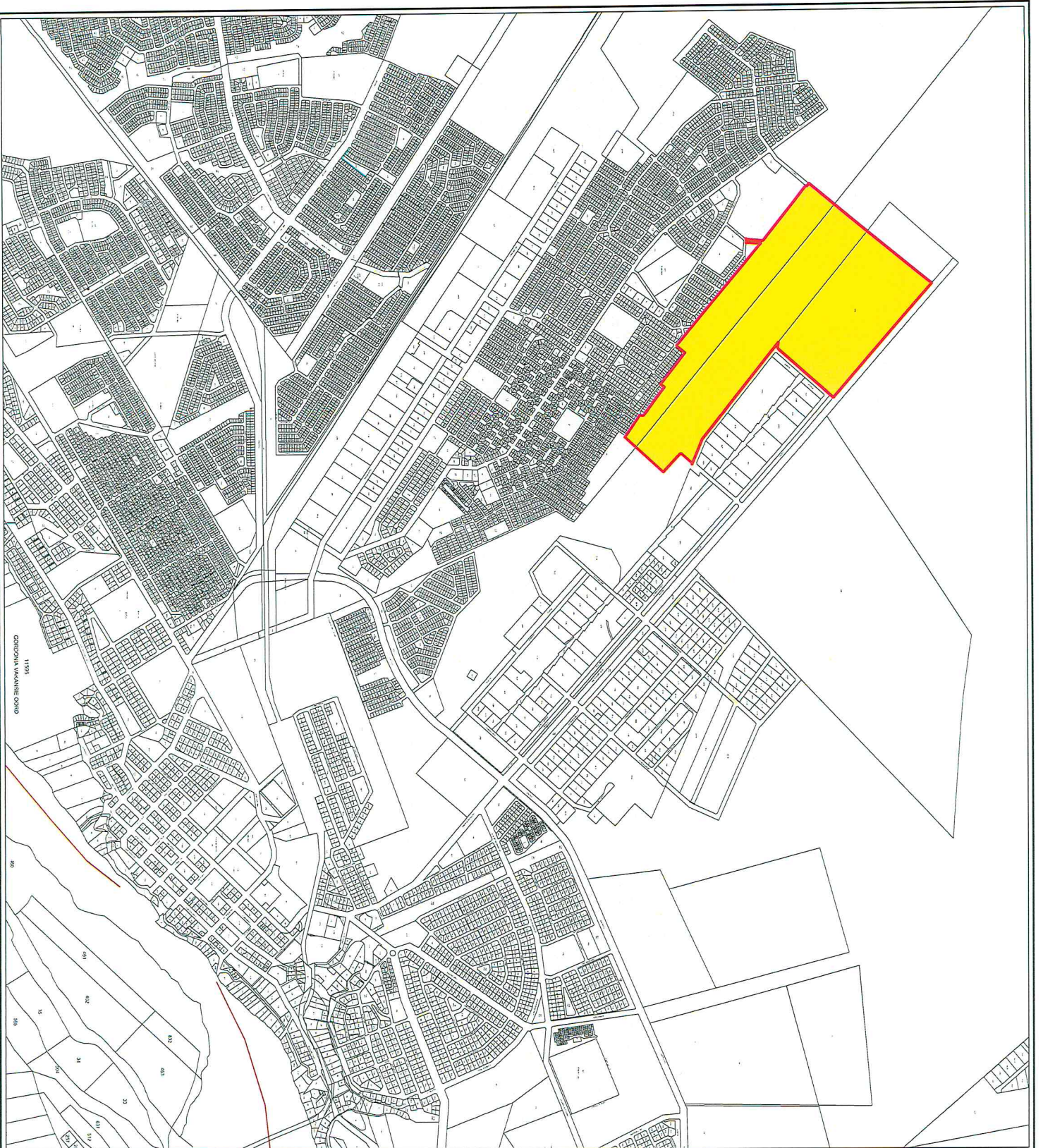
Date: Nov. 2013

Drawn: J. Treurnich

Dis signed: J. Treurnich







Title  
**Figure 2:  
 Locality Map: Local**

Property Description  
**Erven 5530, 5645 & 1, Uprington, //Khara Hais  
 Municipality, Northern Cape Province**

**LEGEND**

 Study Area

**MACROPLAN**  
 Town & Regional Planning  
 Spatial Design  
 CONSULTANTS  
 Local Planning

P.O. Box 987  
 Uprington  
 8800  
 macroplan@nwweb.co.za

T. 054 332 3642  
 F. 054 332 4283



Reference: **KH-M/HOU/PAB/02**

Scale: **1: 20 000**

Date: **Nov. 2013**

Designed: **J. Treurnich**

Drawn: **J. Treurnich**

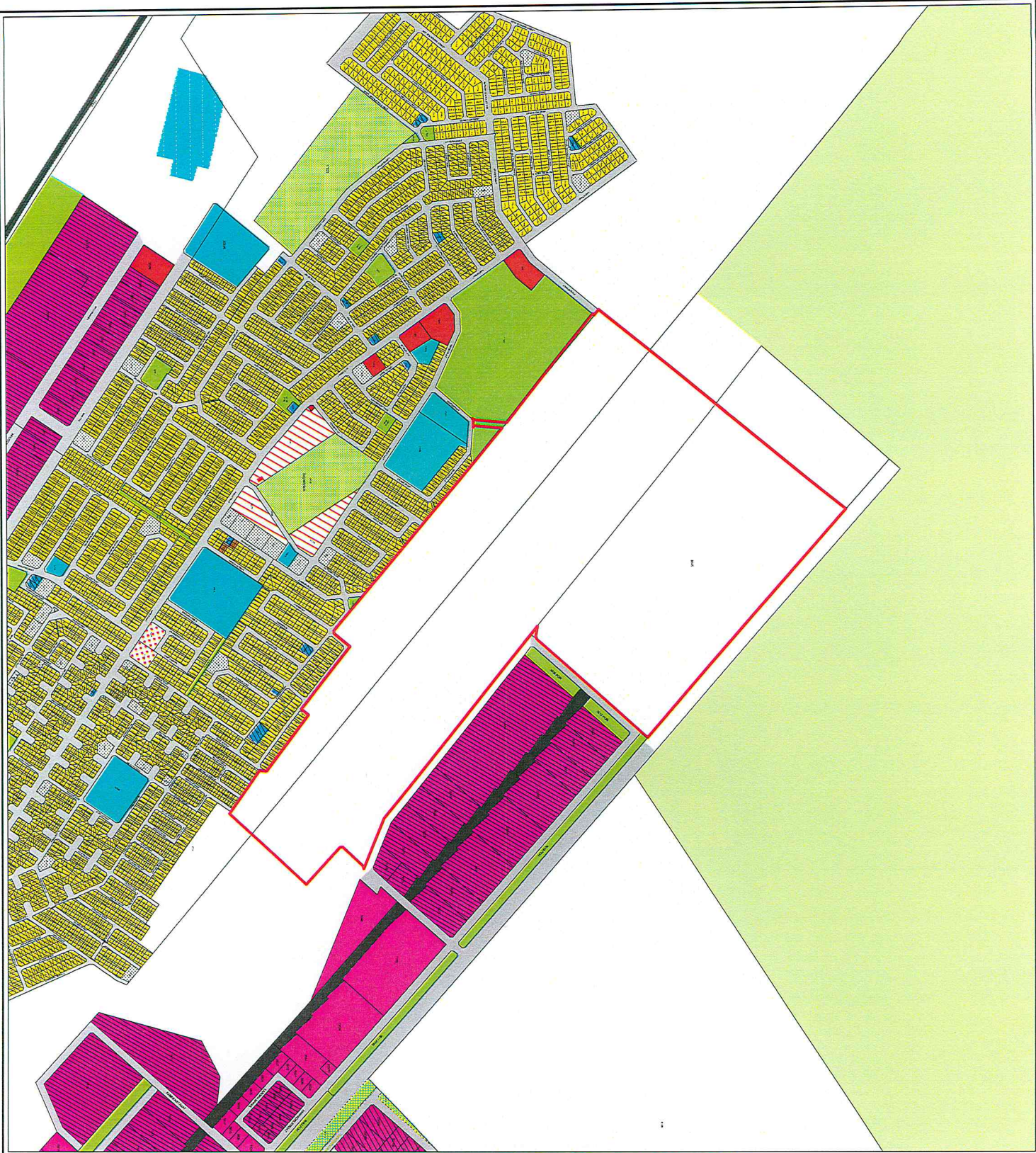


**Figure 3:  
Zoning Map: Excerpt**

Property Description:  
Erven 5530, 5645 & 1, Uptington, //Khara Hais  
Municipality, Northern Cape Province

**LEGEND**

Study Area	
Ba.1: Public Park / Recreation	D1.1 Service Trade Industry
Ba.2: Landscaped Areas	D1.2 Service Station
Ba.3: Parks and Open Spaces	D1.3 Casino
D1.1: Phase of Instruction	D1.4 Adult Entertainment
D1.2: Phase of Workshop	D1.5 SMME Incubators
D1.3: Institution	D1.6 Mixed Use Development
D1.4: Government Uses	D1.7 Composites
D1.5: Municipal Uses	D1.8 Sports Fields and Infrastructure
D1.6: Single Residential House	D1.9 Resorts and Tourism
D1.7: Group Housing	Ea.1 Agricultural Industry
D1.8: Accommodation Facilities	Ea.2 Industrial Development Zone
D1.9: Fibre Residential Building	Ea.3 Light Industry
D1.10: Mixed Density Residential	Ea.4 Industry
D1.11: Care Housing	Ea.5 Tobacco Industry
D1.12: Subsidised Housing	Ea.6 Executive Industry
D1.13: Informal Housing	Fa.1 Public Streets
D1.14: Small Holdings	Fa.2 Public Parking
D1.15: Residential Estate	Fa.3 Railway Lines
D1.16: Business Premises	Fa.4 Power Lines
D1.17: Commercial	Ga.1 Unspecified Zone



**MACROPLAN**  
Spatial & Environmental  
Systems & Design Services

**COBBETTLA**  
Spatial Design  
Land Use Services

P.O. Box 987  
Uptington  
8800

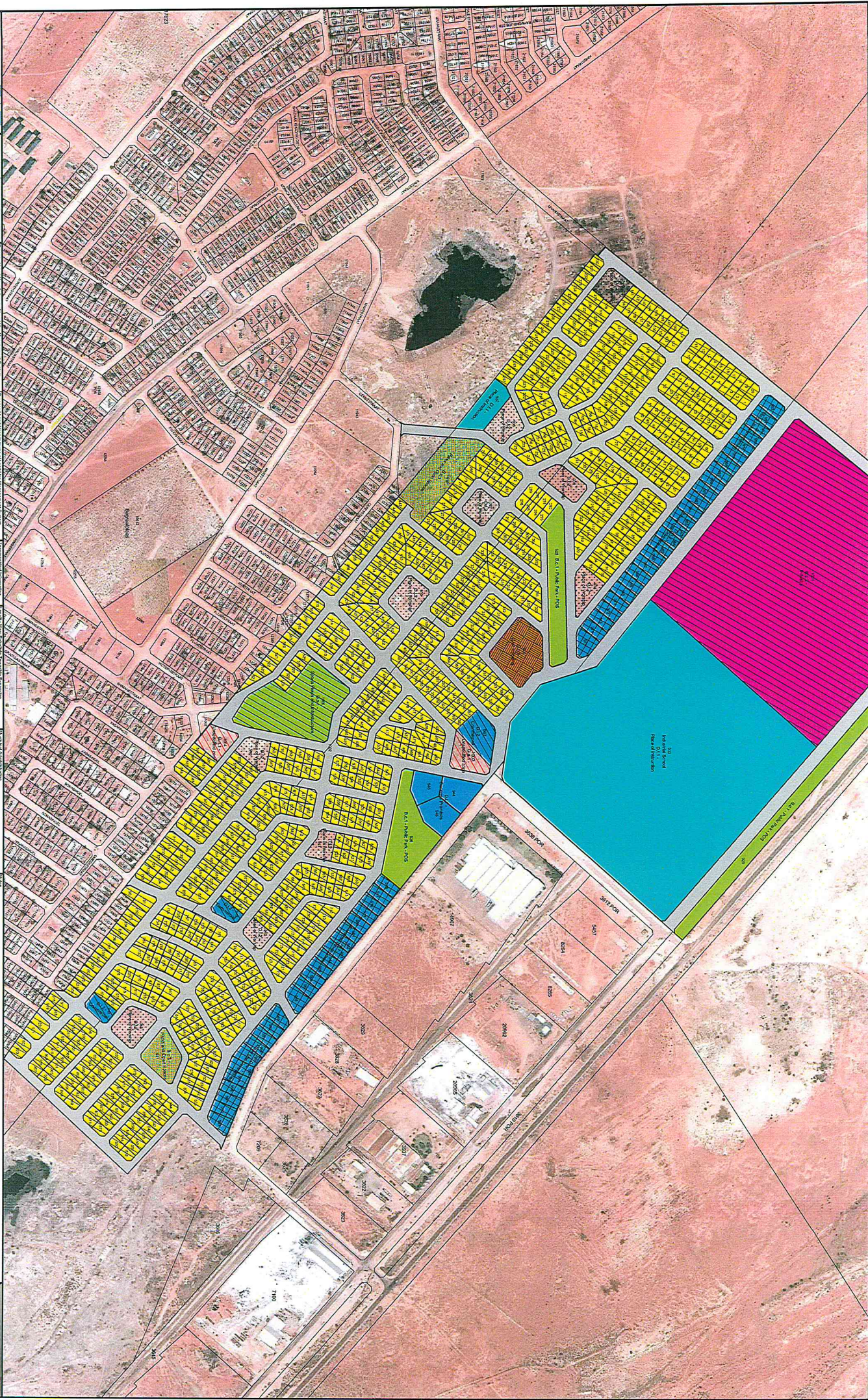
T. 054 332 3642  
F. 054 332 4283  
macroplan@mweb.co.za

Reference:  
**KHA/HOU/PAB/03**



Scale:	1: 10 000	Designed:	J. Treurnich
Date:	Nov. 2013	Drawn:	J. Treurnich





**Partially**  
**Residential Expansion**  
**//Kibera Halls**  
**Municipality**  
 Date: 20/01/2014  
 Scale: 1:2000  
**Final Layout Plan**  
**UKHMPAB/F02**



**Proposed Land Use & Form of Land Use Management System**

Code	Form of Land Use Management System	Area (m <sup>2</sup> )	Percentage (%)
1	Residential (Single Unit)	1,234,567	15.2
2	Residential (Multi-Unit)	8,765,432	108.1
3	Commercial	123,456	1.5
4	Industrial	234,567	2.9
5	Public Use	345,678	4.3
6	Open Space	456,789	5.7
7	Water Body	567,890	7.1
8	Other	678,901	8.5
<b>Total</b>		<b>8,146,170</b>	<b>100.0</b>

**Proposed Land Use & Form of Land Use Management System**

Code	Form of Land Use Management System	Area (m <sup>2</sup> )	Percentage (%)
1	Residential (Single Unit)	1,234,567	15.2
2	Residential (Multi-Unit)	8,765,432	108.1
3	Commercial	123,456	1.5
4	Industrial	234,567	2.9
5	Public Use	345,678	4.3
6	Open Space	456,789	5.7
7	Water Body	567,890	7.1
8	Other	678,901	8.5
<b>Total</b>		<b>8,146,170</b>	<b>100.0</b>

**100% Properties created**  
**423 Residential properties created**  
 in the form of 423 lots of 100m<sup>2</sup> each.

**MACROPLAN**  
 Town Planning & Land Use Specialists  
 P.O. Box 89  
 00100 Nairobi  
 Kenya  
 Tel: 011 254 20 234 233  
 Fax: 011 254 20 234 233  
 Email: info@macroplan.co.ke  
 Website: www.macroplan.co.ke

**//Kibera Halls**  
**Local Municipality**