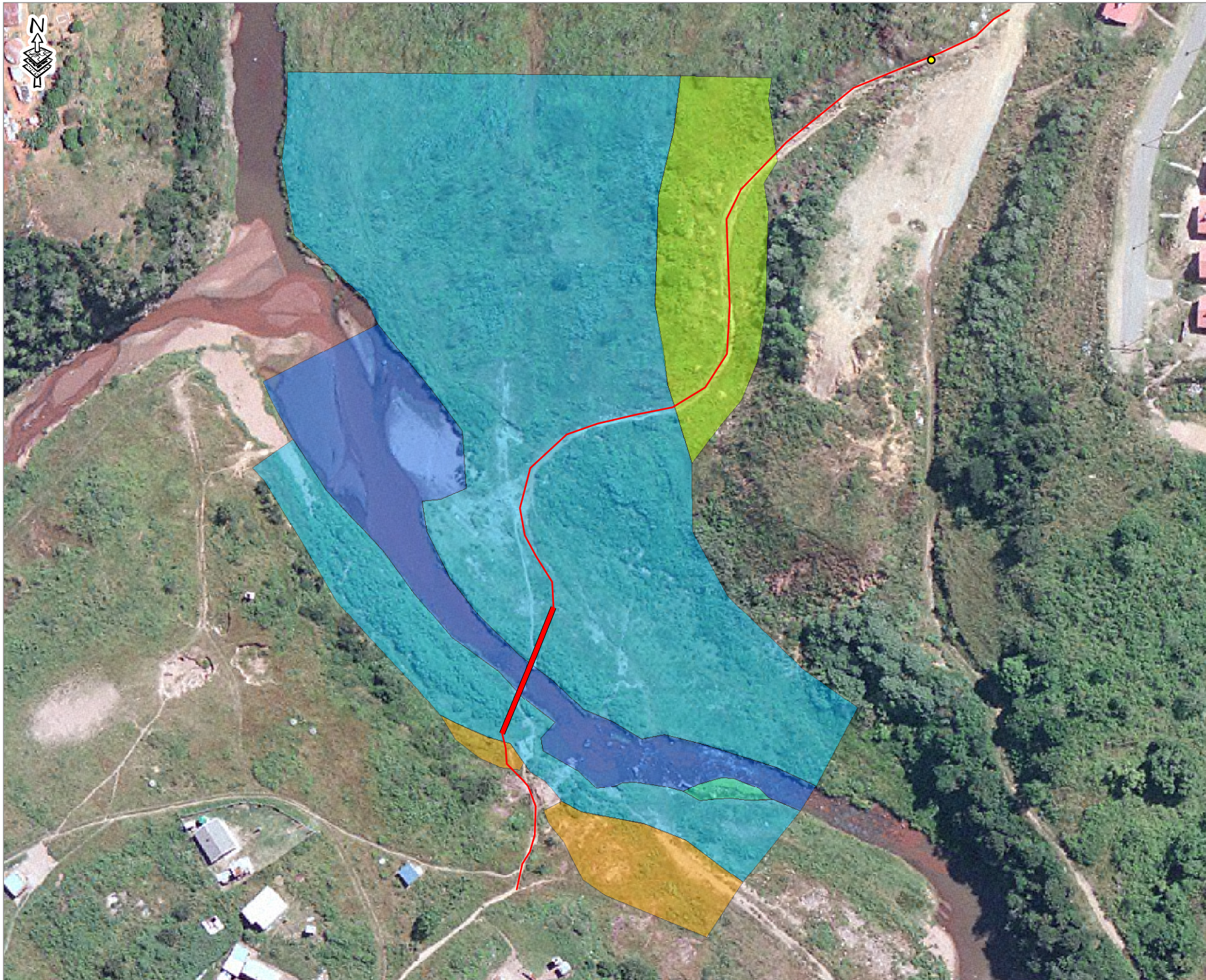



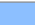

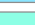

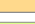


FIGURE 2: DELINEATED WETLAND AND RIPARIAN AREAS



- Legend**
-  Stormwater Outlet Headwall
 -  Existing Pedestrian Pathway
 -  Existing Informal Bridge
 -  Active Channel 2013
 -  Seasonal Floodplain Wetland
 -  Flood Bench
 -  Terrace
 -  Hillslope Seepage Wetland

Data Sources: THE CHIEF DIRECTORATE OF SURVEY & MAPPING
1:50 000 TOPOGRAPHICAL SERIES

Disclaimer:

FIGURE NO.: 2

MAP NUMBER: 14-501-FZ-01

DRAWN BY: R. EDWARDS
WETLAND ECOLOGIST

REVIEWED BY: R. STOW
SENIOR SCIENTIST

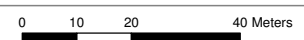
DATUM: WGS84
PROJECTION: GEOGRAPHIC
LO: 31

DATE: 10-09-14

CLIENT: SIVEST

PROJECT: MBOKODWENI RIVER PEDESTRIAN BRIDGE

SCALE: 1:1 386




GCS
Water & Environmental
Consultants

4a Old Main Road
Judges Walk
Kloof, 3610
South Africa
T • +27(31) 764-7130
F • +27(31) 764-7140