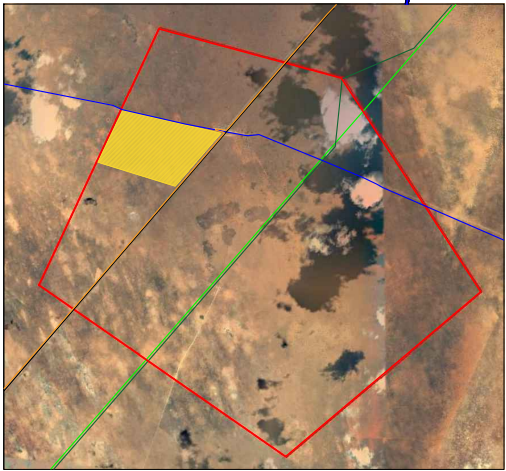
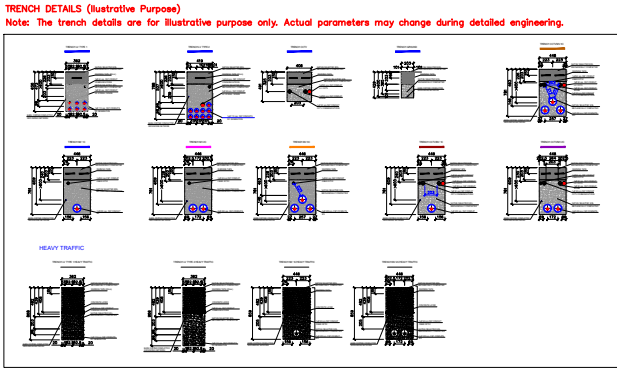


Foot Print			
Site	285 ha	Office Room	200 m2
EIA	300 ha	Staff Room	200 m2
Lay down area	1950 m2	Security Room	56 m2
BESS area	20000 m2	Substation	4900 m2

Kgalalelo Solar Power Plant (RF) (Pty) Ltd



Legends	
	150MW BESS
	Borrow Pit
	Excess Material
	Sub Soil
	Top Soil
	Lay down area
	Coordination of point: 28° 12.858'S , 22° 32.573'E
	PV plant land Border, 285 Hectares
	EIA land Border, 300 Hectares
	Existing Barrier / Fences
	2.8 MWac (2x1.4) Inverter & Transformer Station
	Rack 2V/30
	Proposed Connection line Route
	Site Access Road Width: 10 - 12 m Total Length: 41 m
	Perimeter Road Width: 10 - 12 m Total Length: 6 900 m
	Internal Roads Width: 7 m Total Length: 14 530 m

<div>E:\subsolaras_kaga_wp_250px.png</div> <div>Subsolar Company</div>		Project :  Tirisano Solar Power Plant (RF)(Pty) Ltd 142.8 MWdc Photovoltaic Power Plant  DWG No:	Title :  Preliminary Layout of PVP		Scale : 1:5000 Unit : Meter	Electrical Parameters	
Address :			Project Name : Tirisano		DATE : 2020.09.30	DC capacity of plant	142.8 MW
			Design : Technical Department of Subsolar Co.			Number of modules	385920 each 370 Wp
						Number of Inverters	44 each 2.8 MWac