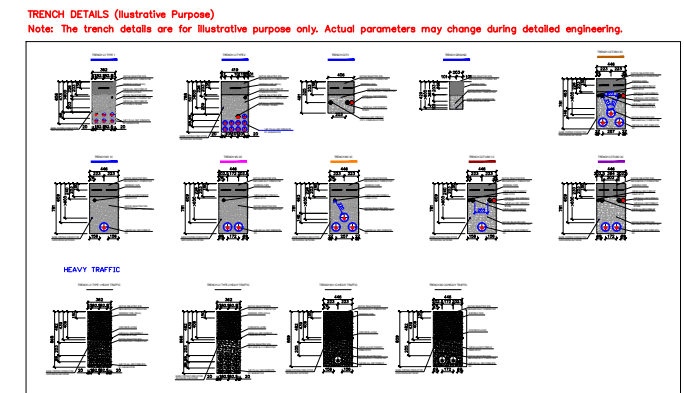
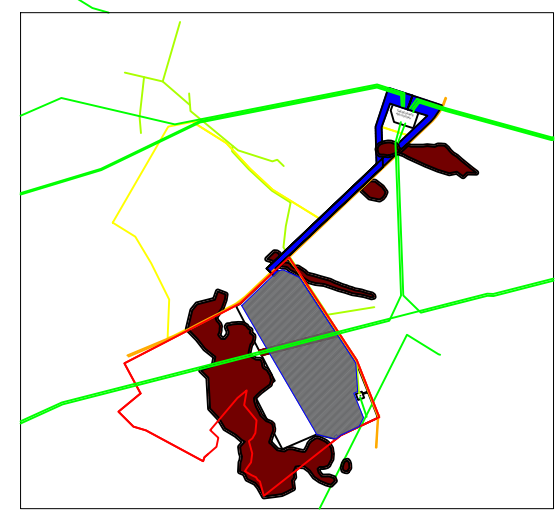
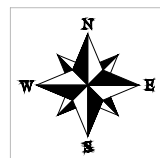
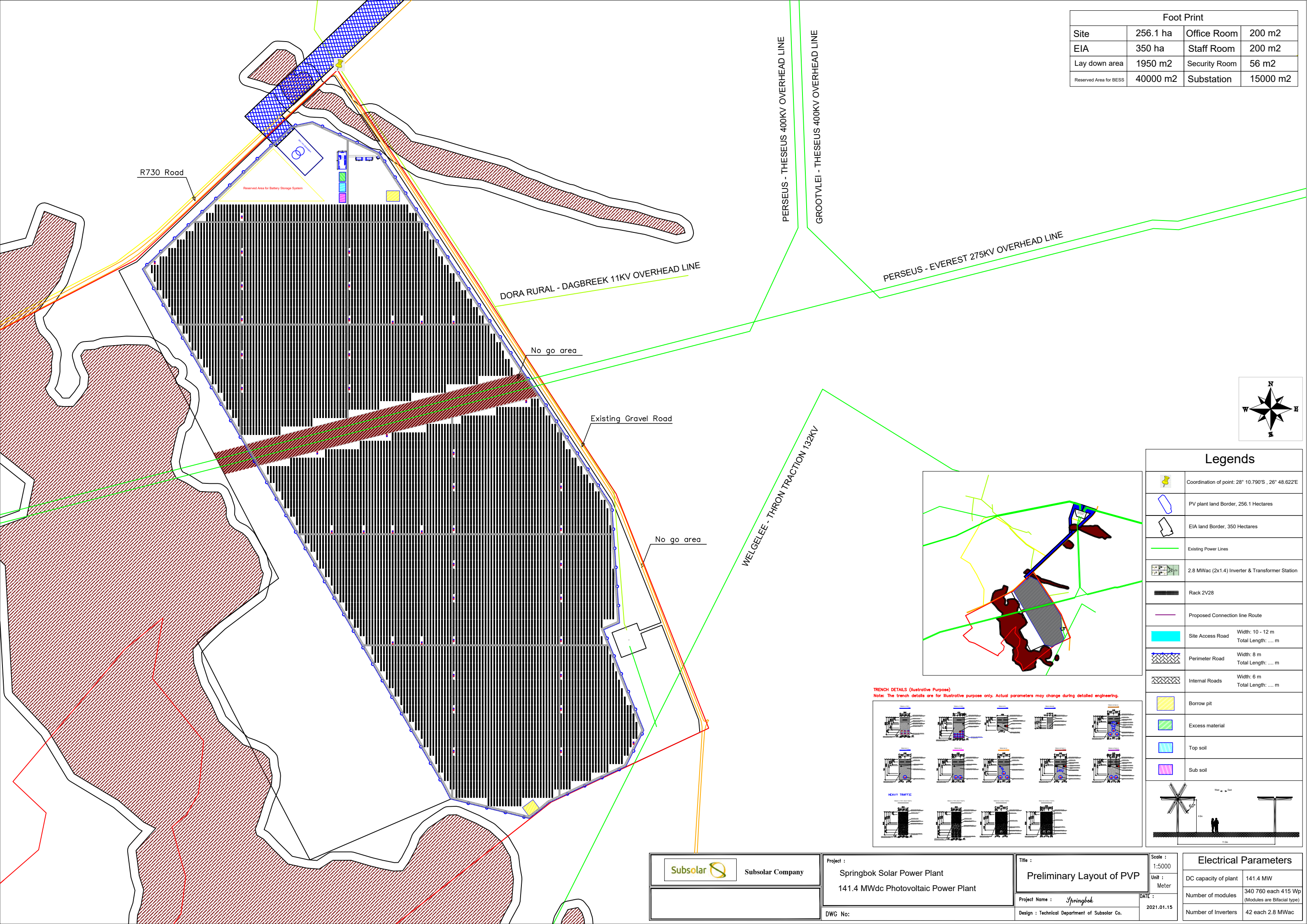


Foot Print			
Site	256.1 ha	Office Room	200 m2
EIA	350 ha	Staff Room	200 m2
Lay down area	1950 m2	Security Room	56 m2
Reserved Area for BESS	40000 m2	Substation	15000 m2



Legends	
	Coordination of point: 28° 10.790'S , 26° 48.622'E
	PV plant land Border, 256.1 Hectares
	EIA land Border, 350 Hectares
	Existing Power Lines
	2.8 MWac (2x1.4) Inverter & Transformer Station
	Rack 2V28
	Proposed Connection line Route
	Site Access Road Width: 10 - 12 m Total Length: ... m
	Perimeter Road Width: 8 m Total Length: ... m
	Internal Roads Width: 6 m Total Length: ... m
	Borrow pit
	Excess material
	Top soil
	Sub soil
	Scale: 1:5000 Unit: Meter

**Subsolar** Subsolar Company

Project : Springbok Solar Power Plant  
 141.4 MWdc Photovoltaic Power Plant

Title : Preliminary Layout of PVP  
 Project Name : Springbok  
 Design : Technical Department of Subsolar Co.

Scale : 1:5000  
 Unit : Meter  
 DATE : 2021.01.15

Electrical Parameters	
DC capacity of plant	141.4 MW
Number of modules	340 760 each 415 Wp (Modules are Bifacial type)
Number of Inverters	42 each 2.8 MWac