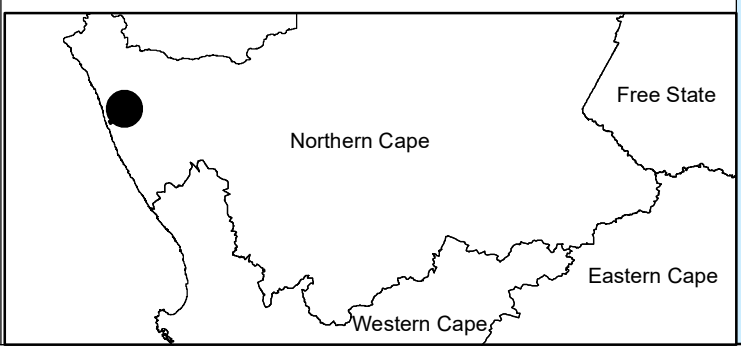


Namas Wind Farm, Northern Cape

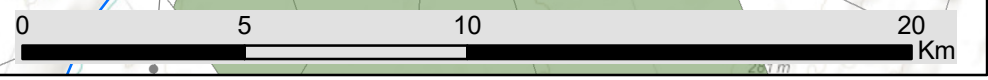
Locality Map

Legend

- Town
- Eskom substation
- Eskom power line (to be constructed)
- Eskom power line (existing)
- Regional road
- Perennial river
- Non-perennial river
- Namaqua National Park
- Namas Wind Farm Project Site
- Farm Portions



Scale: 1:170 000
 Projection: LO17
 Map Ref: Namas - Locality Map (WF) - 06.06.18



Namas Wind Farm, Northern Cape

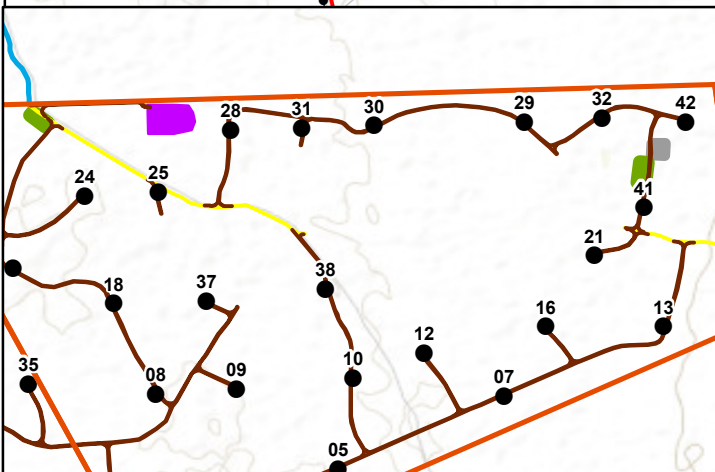
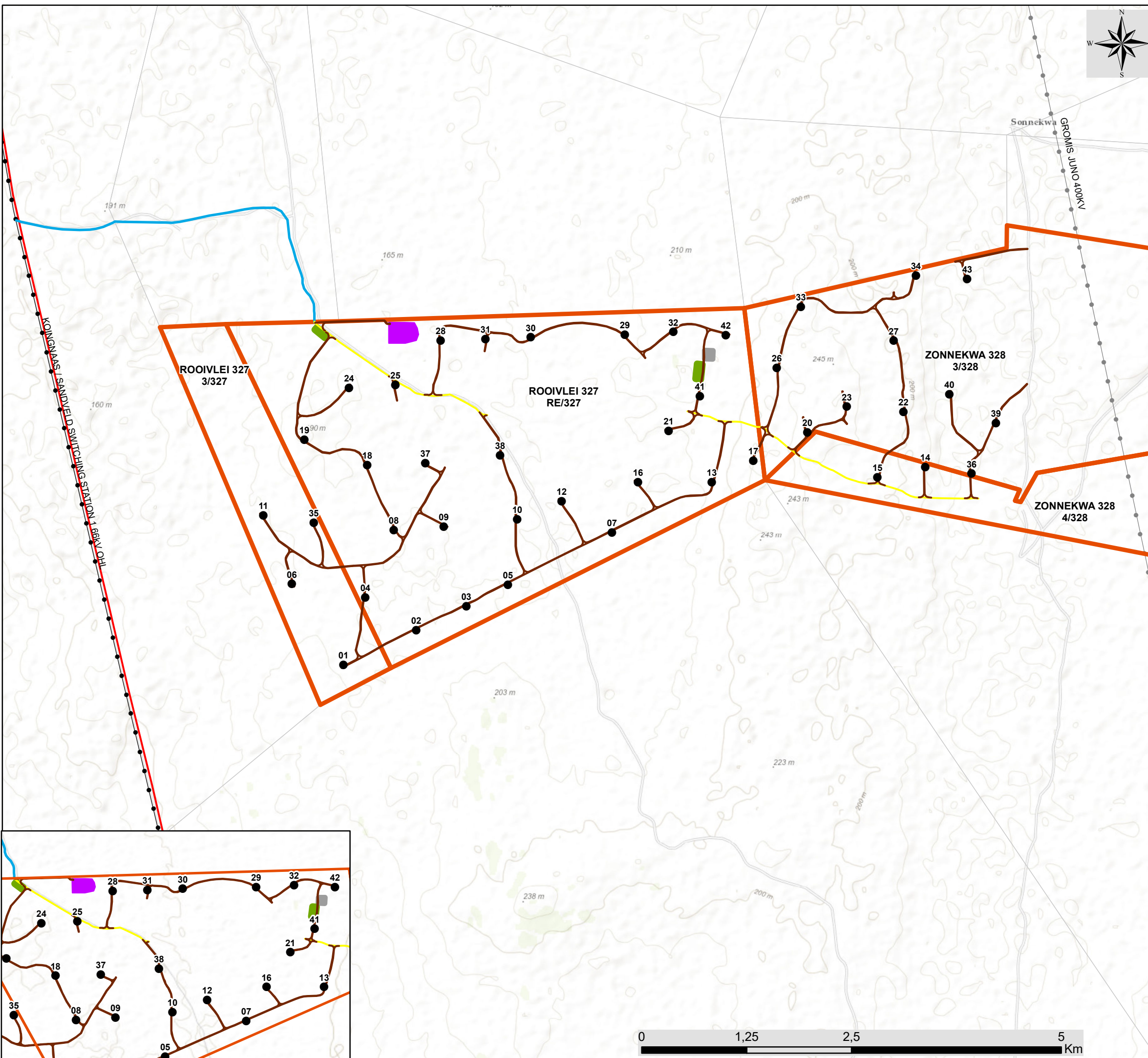
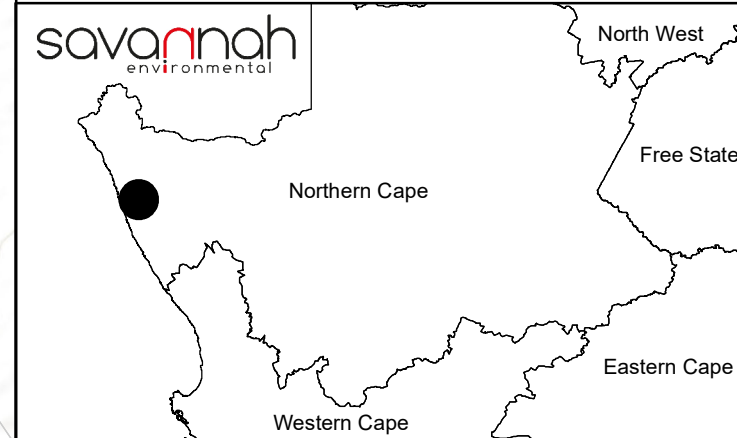
Layout Map



Legend

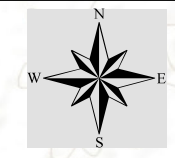
- Eskom power line (to be constructed)
 - Eskom power line (existing)
 - Main road
 - Farm Portions
 - Namas Wind Farm Affected Properties
- Layout Plan (development footprint):**
- Wind Turbine
 - Access Alternative (to be upgraded)
 - Existing roads to be upgraded
 - Internal Access Roads to be constructed
 - On-site Facility Substation
 - Laydown area
 - O&M Buildings

Scale: 1:44 000
Projection: LO17
Map Ref: Namas - Layout Map (zoom-in) (WF) - 13.09.18



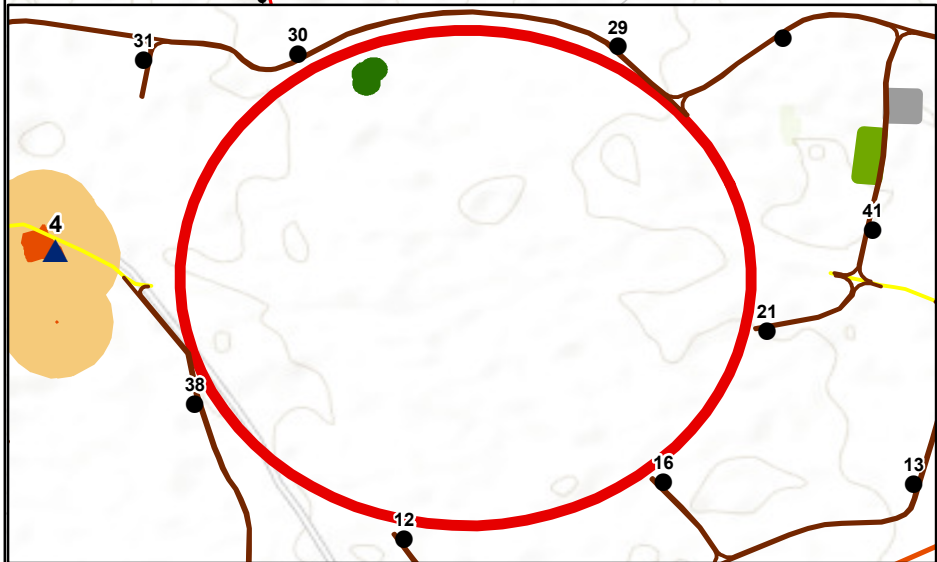
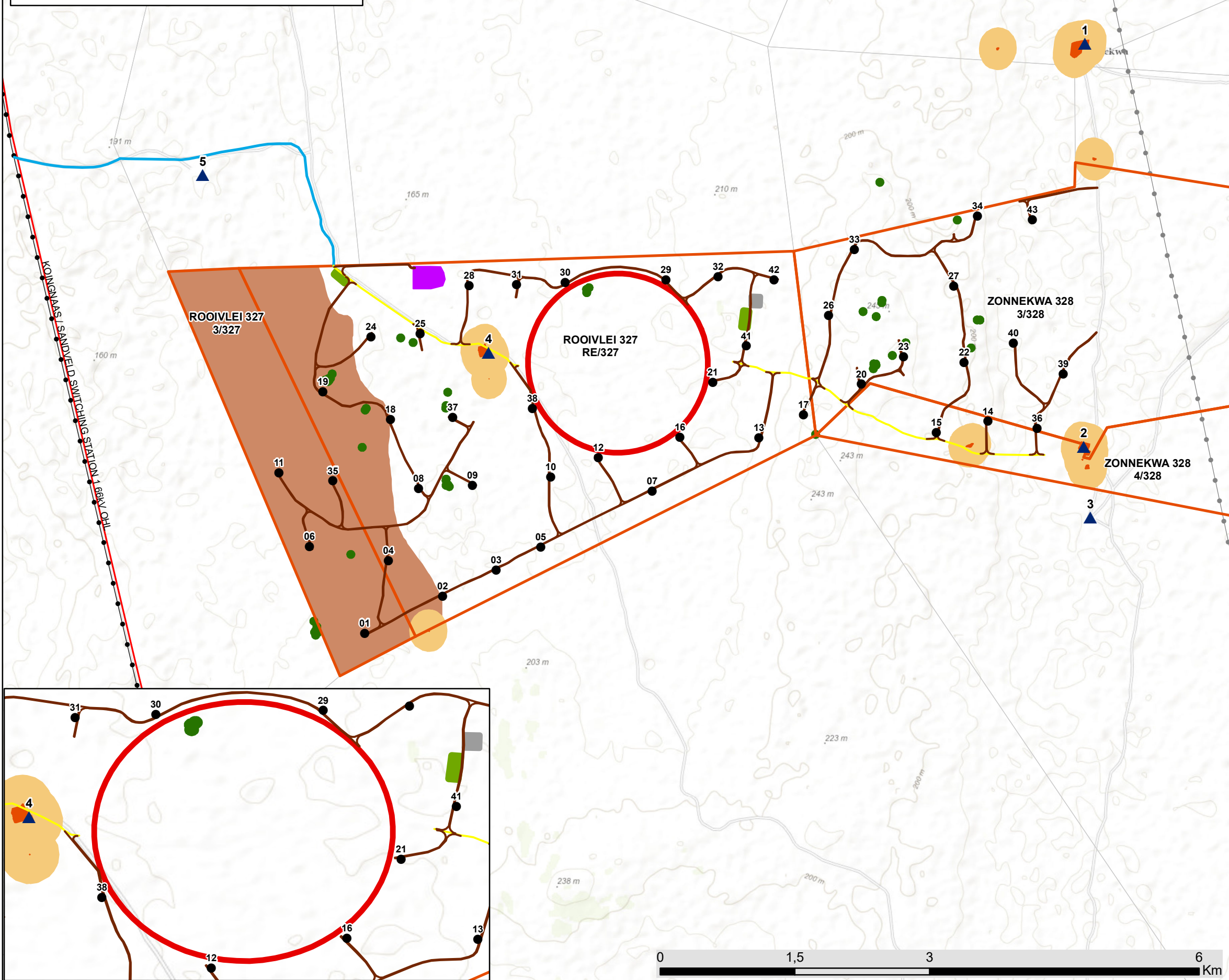
Namas Wind Farm, Northern Cape

Environmental Sensitivity and Layout Map

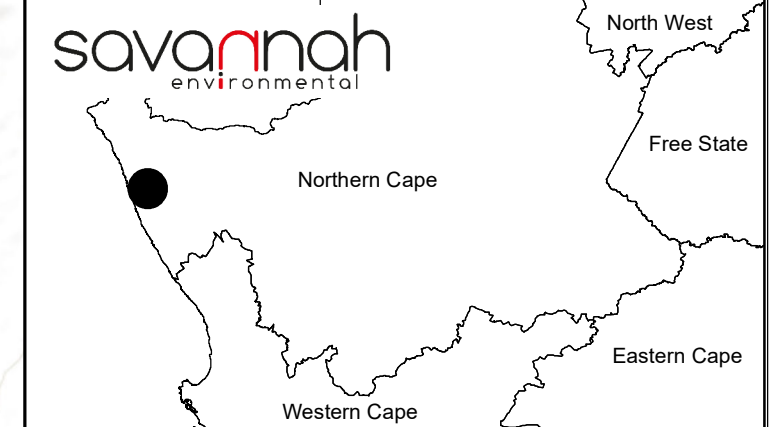
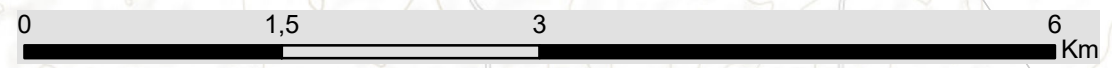


Legend

- Eskom substation
 - Eskom power line (to be constructed)
 - Eskom power line (existing)
 - Regional road
 - Main road
 - Perennial river
 - Non-perennial river
 - Farm Portions
 - Namas Wind Farm Project Site
- Layout Plan (development footprint):**
- Wind Turbine
 - Access Alternative (to be upgraded)
 - Existing roads to be upgraded
 - Internal Access Roads to be constructed
 - On-site Facility Substation
 - Laydown area
 - O&M Buildings
- Sensitive Environmental Features:**
- Noise Sensitive Development
 - Secretarybird Nest 1km Buffer (Avifauna No-Go Area)
 - High Bat Sensitivity Area
 - 200m High Bat Sensitivity Buffer
 - Significant Heritage Sites (50m buffer)
 - Coastal Duneveld (Moderately High Ecological Sensitivity)



Scale: 1:44 000
 Projection: LQ17
 Map Ref: Namas - Sensitivity & Layout Map (WF) - 05.06.18



Appendix N: Site Coordinates

Corner point coordinates (Project Site – starting in the western corner moving clockwise):

Coordinates		
	Latitude (S)	Longitude (E)
1	29° 50' 8,530" S	17° 8' 34,952" E
2	29° 50' 0,765" S	17° 12' 54,287" E
3	29° 49' 37,294" S	17° 14' 50,728" E
4	29° 49' 28,481" S	17° 14' 50,904" E
5	29° 49' 56,786" S	17° 18' 16,455" E
6	29° 52' 2,488" S	17° 18' 34,257" E
7	29° 51' 7,323" S	17° 13' 3,632" E
8	29° 52' 34,630" S	17° 9' 46,378" E