

TOPLINE LANDFILL SITE

Site Notices Placed on the 02<sup>nd</sup> October 2015



Figure 1: Site Notice placed close to the cell at coordinates 28°45'31.00"S; 21°50'13.00"E



Figure 2: View towards the east showing the site notice discussed in Figure 1 in relation to the cell in the background and indicated by a red arrow in the

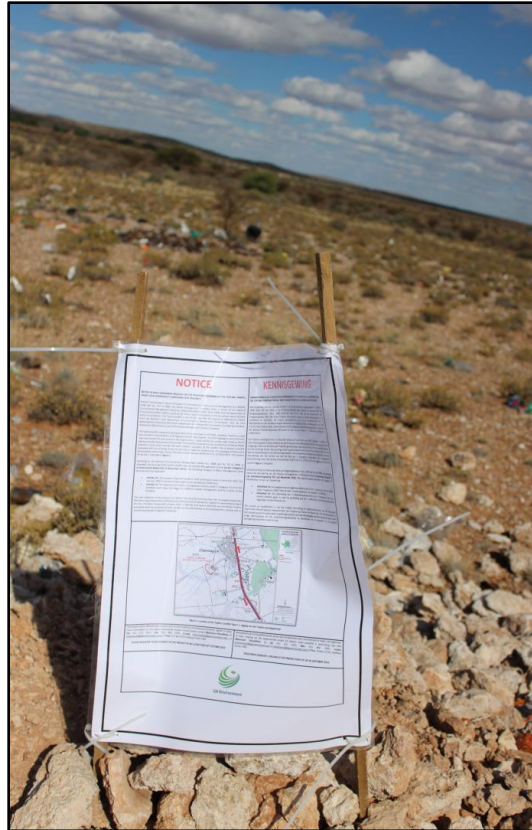


Figure 3: Close up of Site Notice discussed in Figures 1 and 2



Figure 4: Sited Notice placed on a fence,  $28^{\circ}45'22.00''S$ ;  $21^{\circ}50'23.00''E$  of one of the last properties before the vacant land 270 m from the cell along the gravel road leading to the site.





Figure 5: Livingstone Cafe, where an A4 site Notice was placed

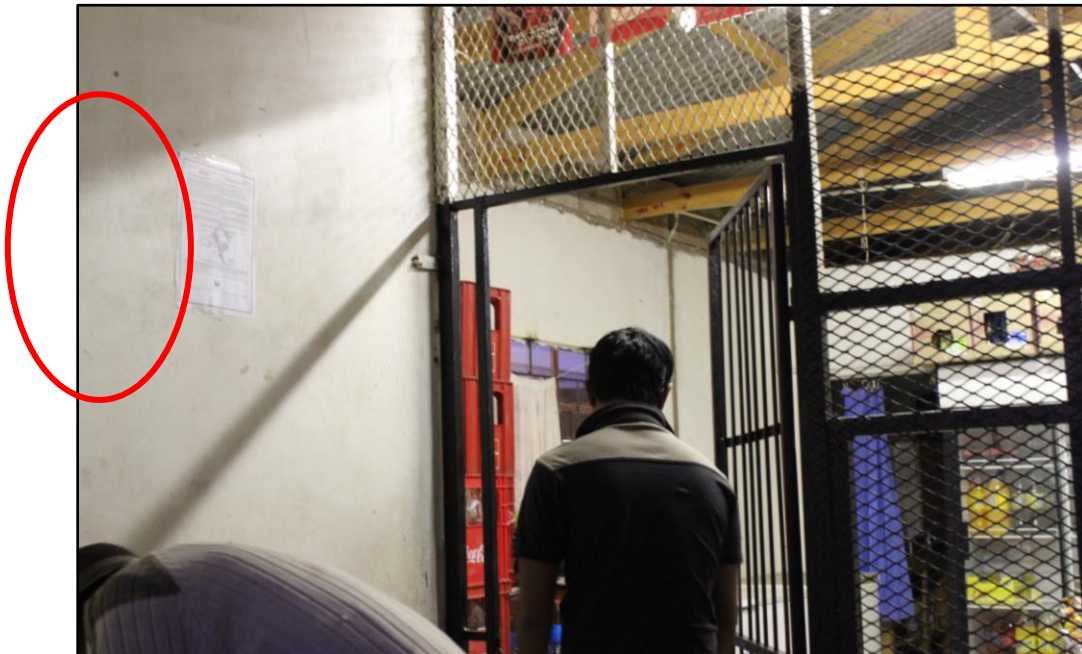


Figure 6: A4 Site Notice on the walls of the tuckshop

Placement of A4 Site Notice at the !Kheis Local Municipality Offices in Groblershoop



Figure 7: !Kheis Local Municipality Offices



Figure 8: Notice board at the !Kheis Local Municipality Offices indicating the A4 Notice in the left hand corner of the board

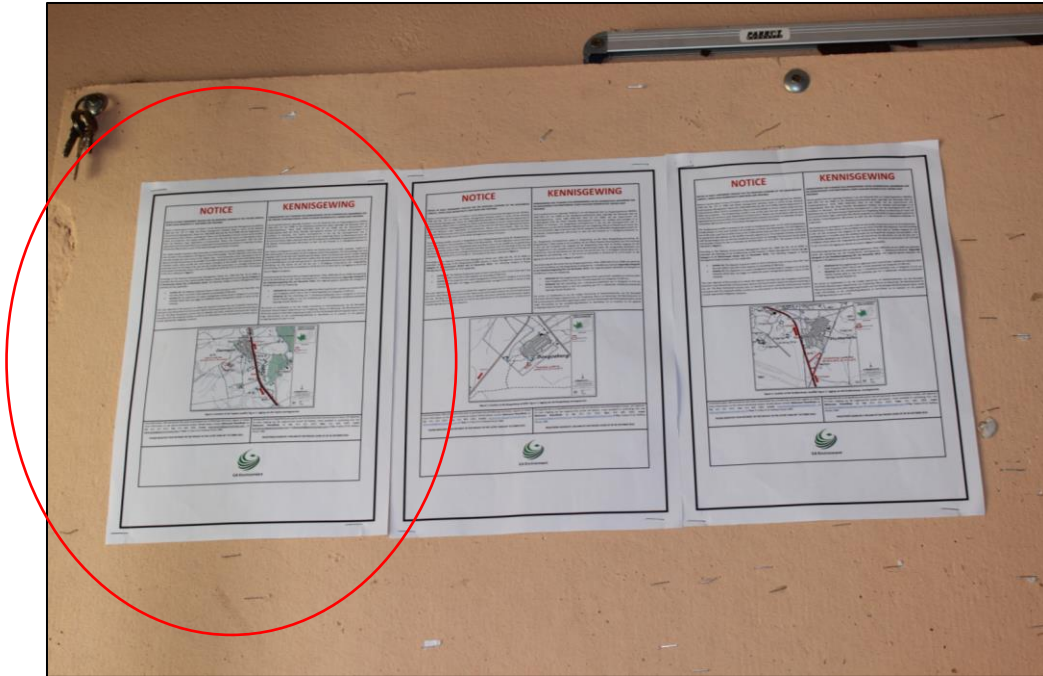


Figure 9: Topline A4 Site Notice indicated by red oval

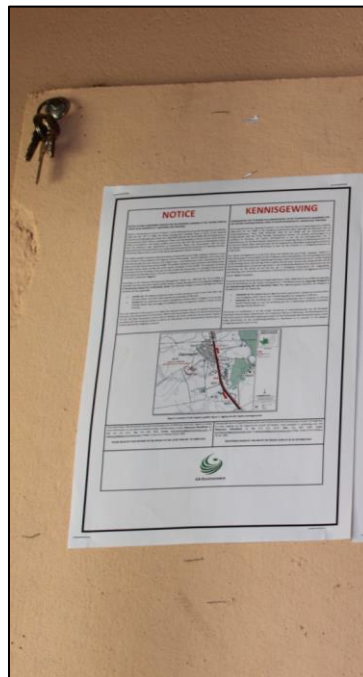


Figure 10: Close up of the Topline A4 Site Notice