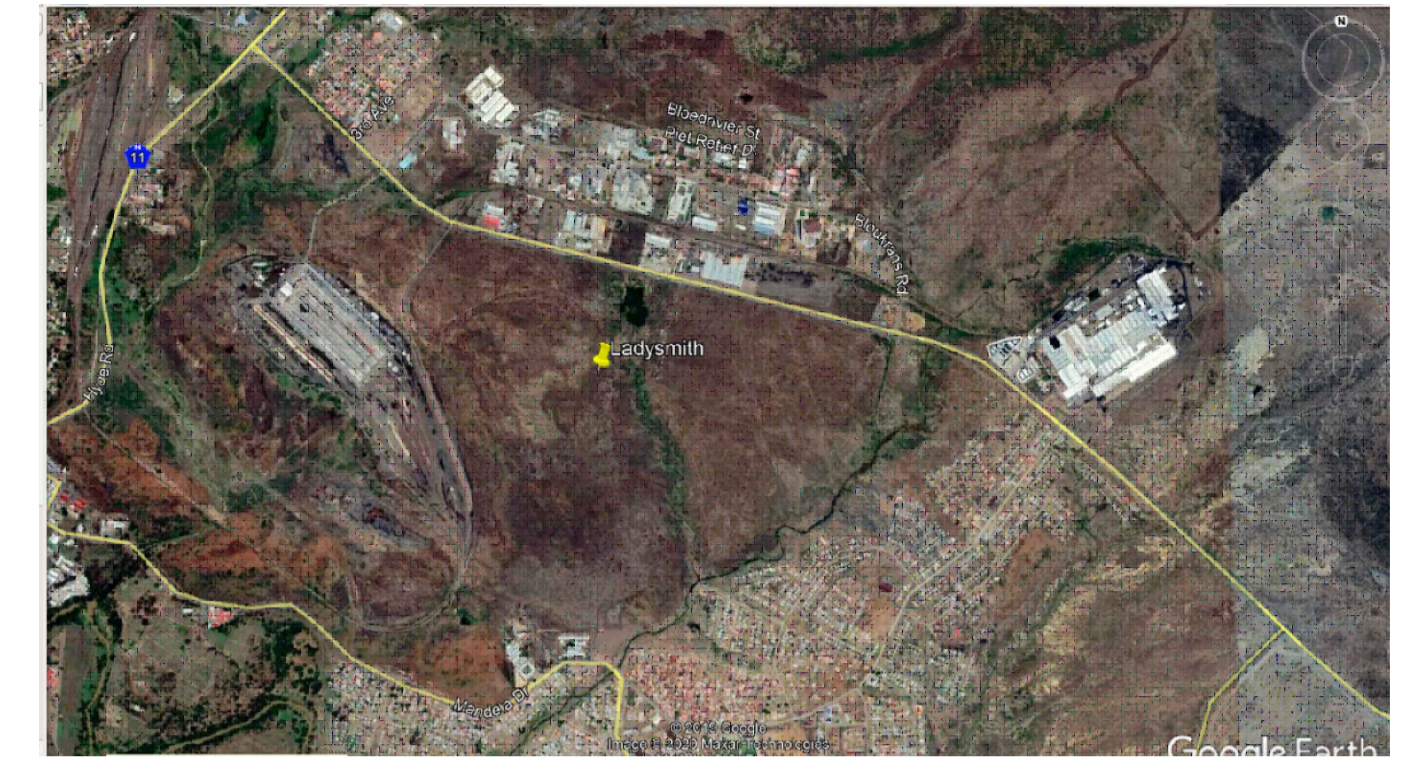


# LOCALITY MAP



Land Use Zone	Sites	Area (Ha)	%
Residential 1	2244	98.34	36.27
Residential 3	8	3.07	1.41
Light Industry	34	5.07	1.87
Business	51	4.03	1.49
Religious	11	1.22	0.45
Creche	9	0.46	0.17
Tourism	11	33.91	12.51
Substation (Eskom)	1	2.15	0.79
Active Open Space	3	4.02	1.48
Passive Open Space	6	50	18.44
Community Facility	3	1.5	0.55
Educational	3	8.9	3.28
Roads		57.72	21.29
<b>Total</b>	<b>2384</b>	<b>271.09</b>	<b>100</b>

PROPOSED TOWNSHIP ESTABLISHMENT  
ON A PART OF THE ERF 15990 OF  
LADYSMITH, UNDER

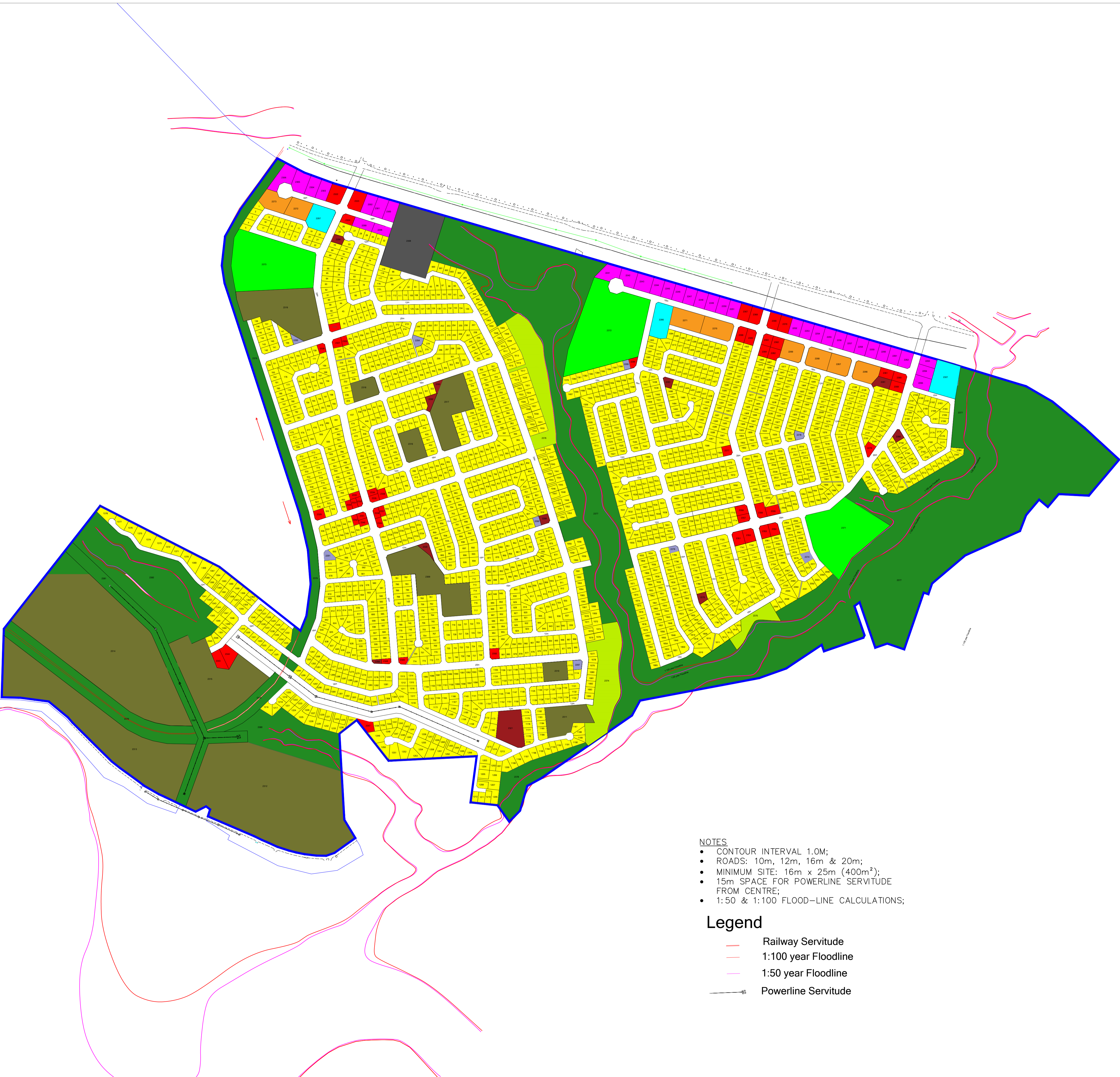
ALFRED DUMA LOCAL MUNICIPALITY

**DRAWN BY:** N.W. BALOYI

**SCALE:**

**DATE:** JANUARY 2020

CONSULTANTS



- NOTES**
- CONTOUR INTERVAL 1.0M;
  - ROADS: 10m, 12m, 16m & 20m;
  - MINIMUM SITE: 16m x 25m (400m<sup>2</sup>);
  - 15m SPACE FOR POWERLINE SERVITUDE FROM CENTRE;
  - 1:50 & 1:100 FLOOD-LINE CALCULATIONS;

### Legend

- Railway Servitude
- 1:100 year Floodline
- 1:50 year Floodline
- Powerline Servitude