

Appendix 3: Maps

Appendix 3(a): Route Plan Maps

Appendix 3(b): Sensitivity Maps

Appendix 3(a): Route Plan Maps



EMKHIWENI SUBSTATION
AND 400KV LINE FROM
EMKHIWENI SUBSTATION
TO SILIMELA

Locality Map

Legend

1: 50 000

Raster

400kV

— Powerline

Substation

Boundary

Loop in

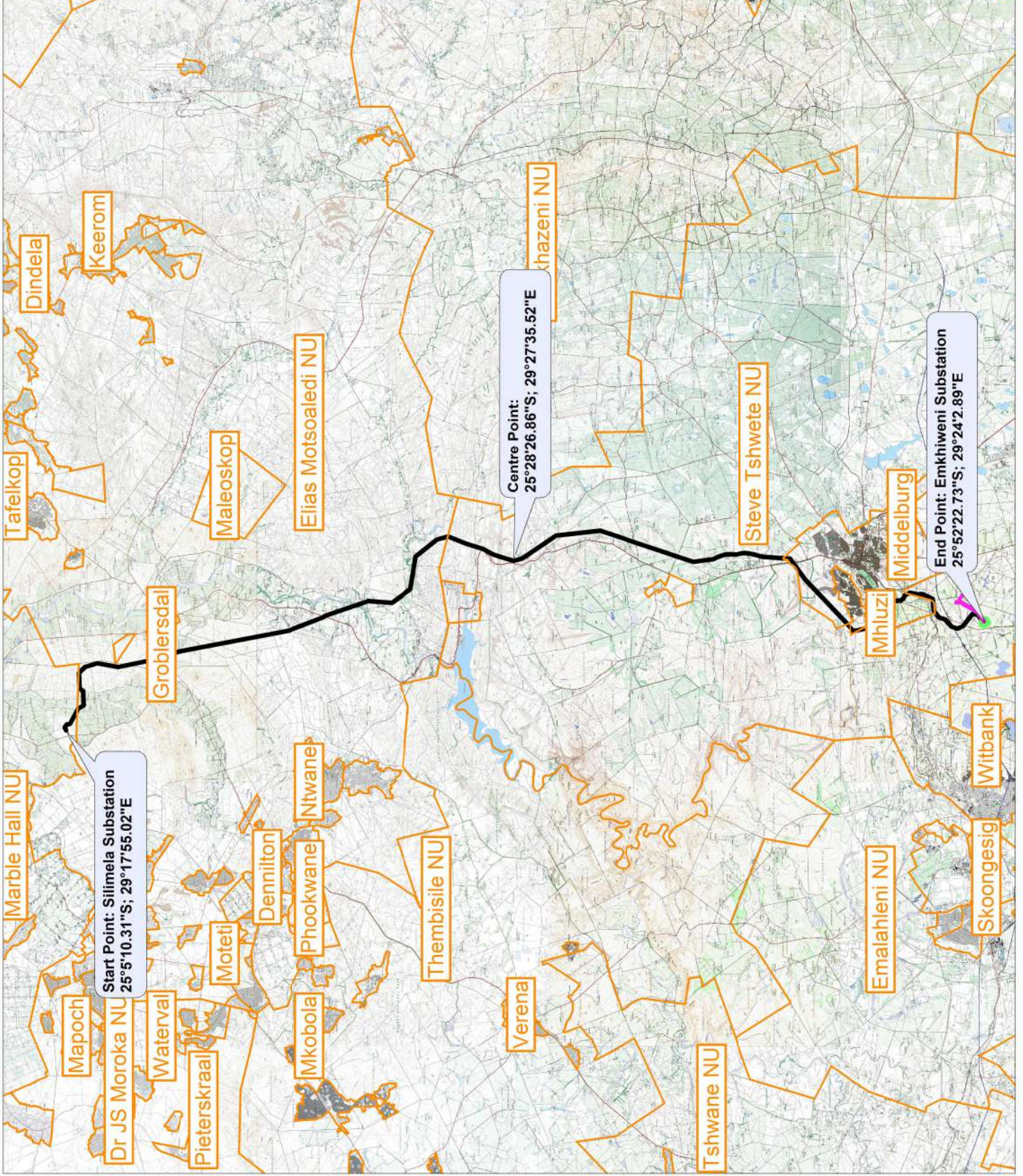
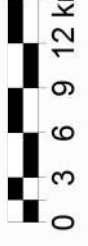
Lines for

Substation

□ Main Places



Scale 1:500000





**EMKHIWENI SUBSTATION
AND 400KV LINE FROM
EMKHIWENI SUBSTATION
TO SILIMELA**

Locality Map

Legend

400kV



Powerline

Substation



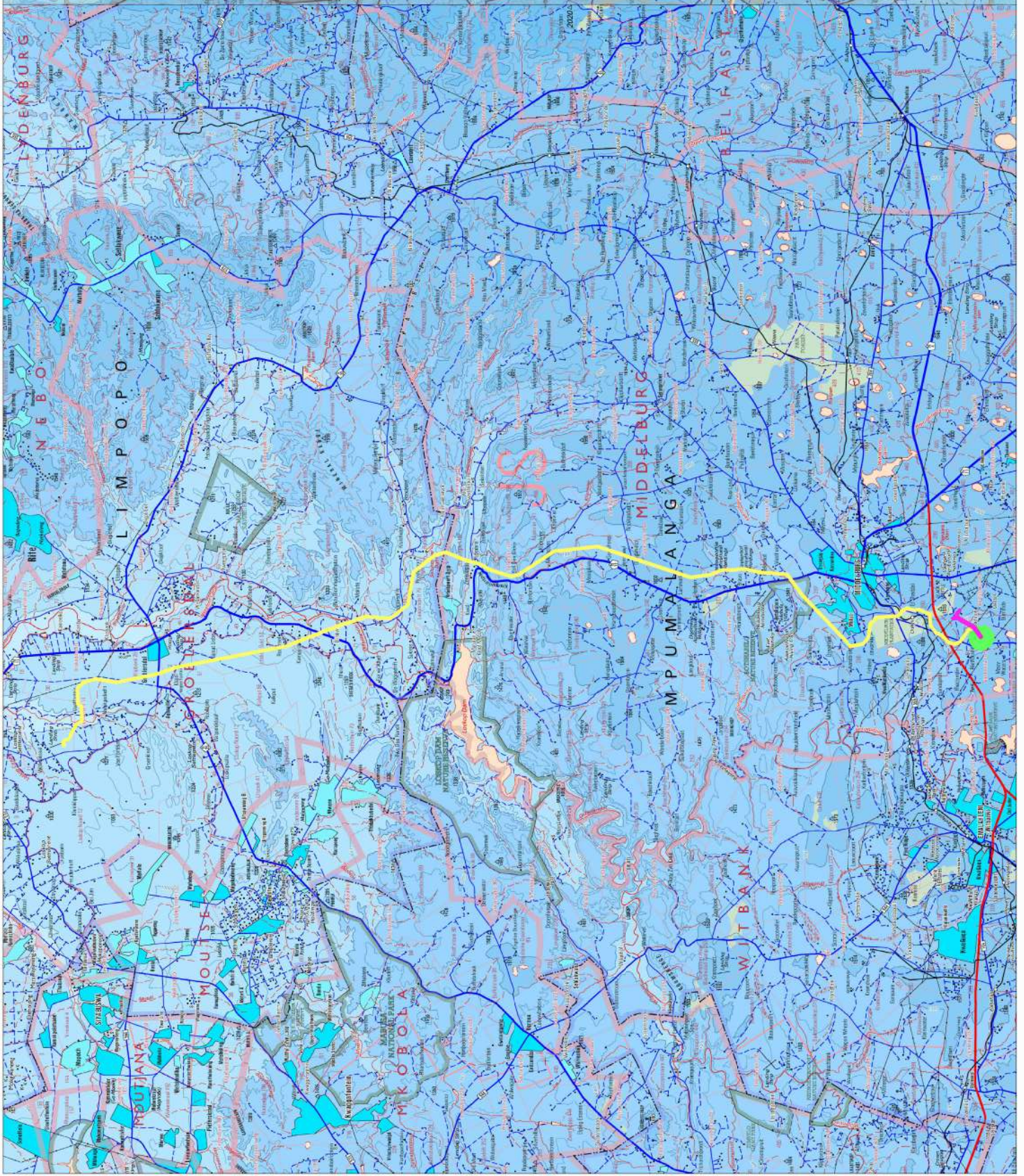
Boundary

Loop in

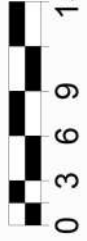
Lines for



Substation



Scale 1:500000





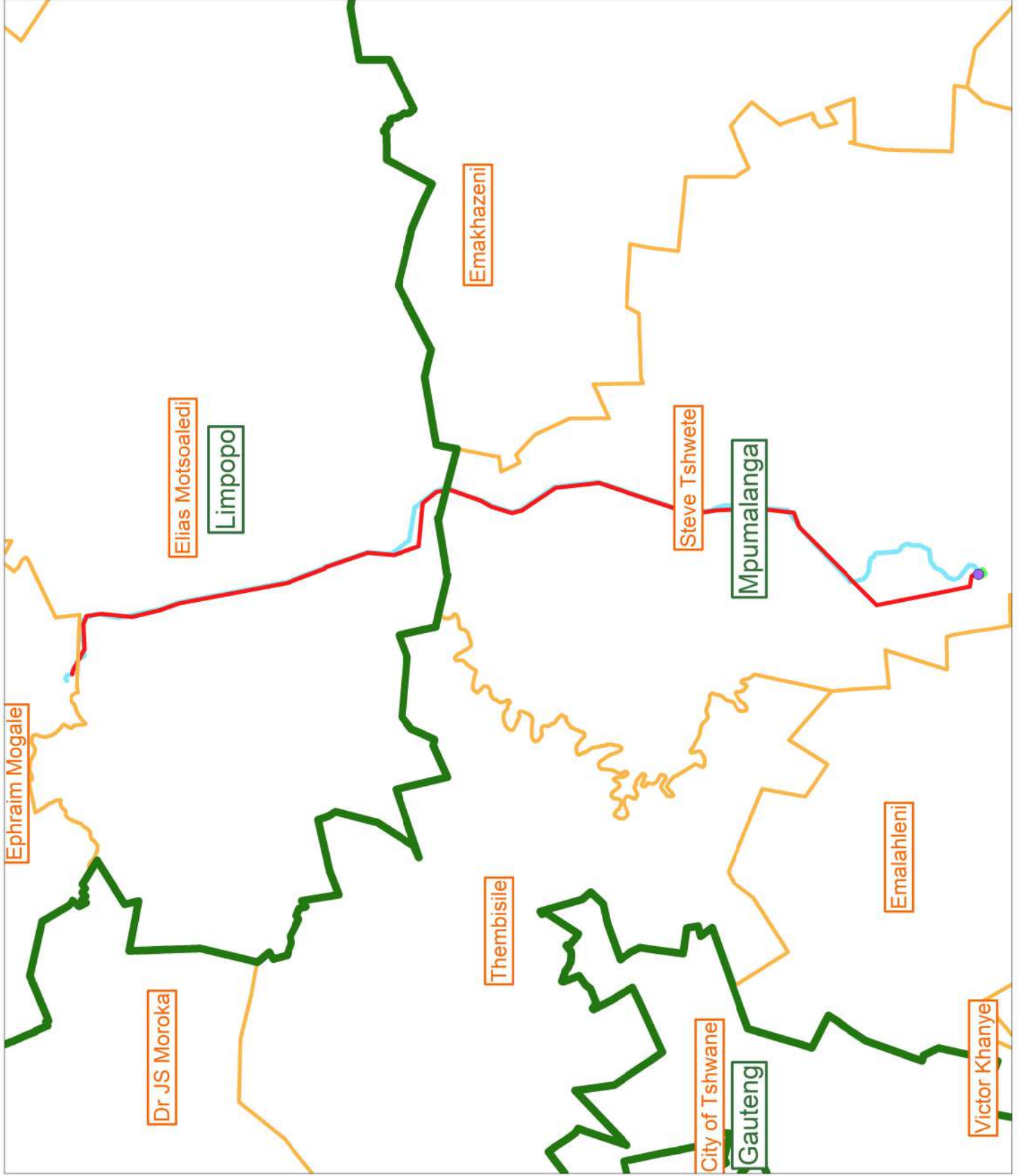
EMKHIWENI SUBSTATION AND 400KV LINE FROM EMKHIWENI SUBSTATION TO SILIMELA

Previously Approved Powerline and Substation

Legend

- Proposed Powerline
- Proposed Substation
- Previous Powerline Approved
- Previous Substation Site Approved
- Local Municipalities 2016
- Provinces

Scale 1:500000





**EMKHIWENI SUBSTATION
AND 400KV LINE FROM
EMKHIWENI SUBSTATION
TO SILIMELA**

Land Use Map

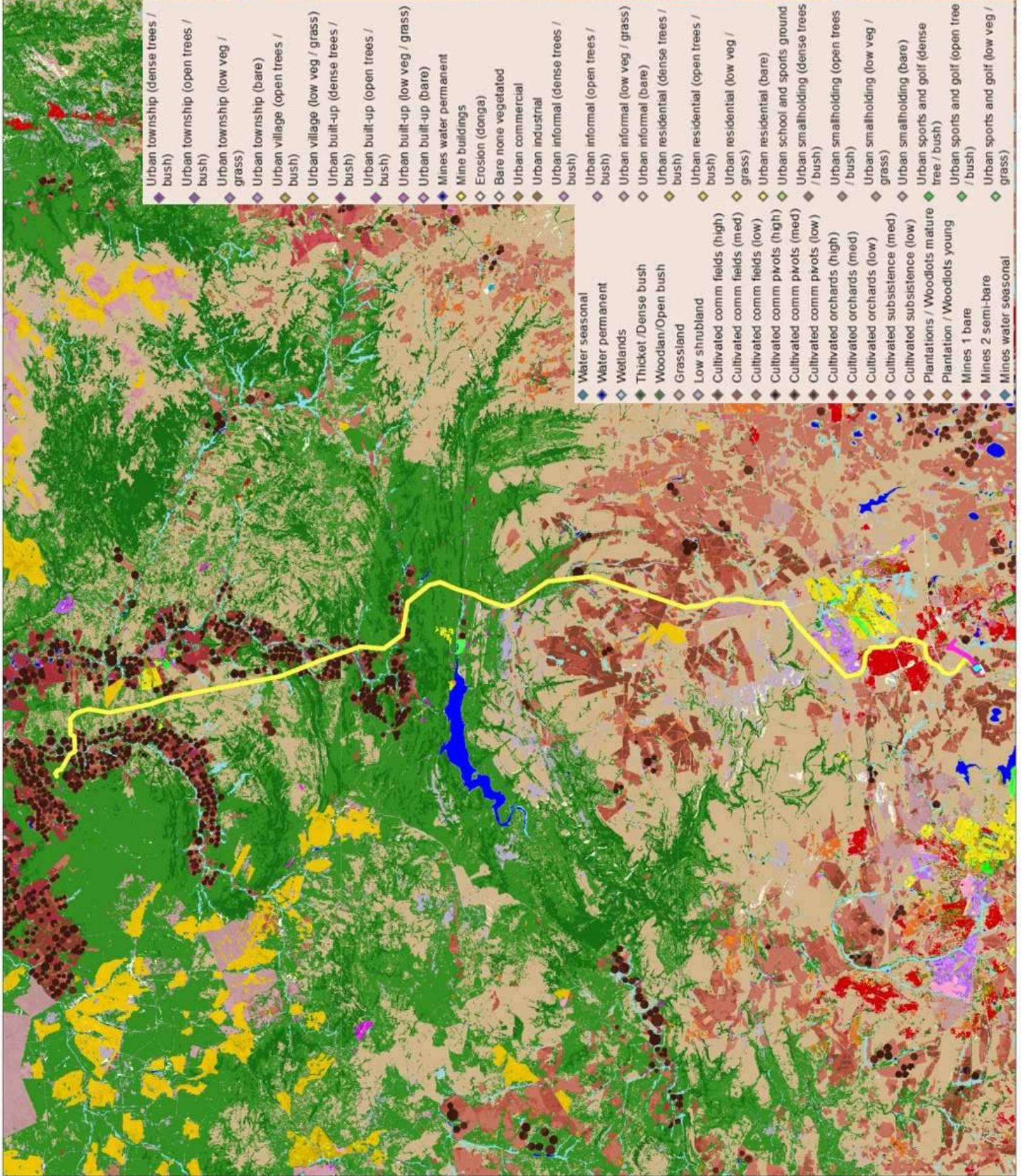
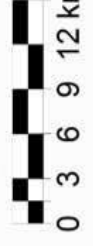
Legend

Proposed Developments

- 55m Servitude
- Full Fence
- Access Road
- Internal Road
- Construction Road
- Proposed Powerline
- Loop in Lines for Substation
- Substation Fence
- Emkhiweni Substation Boundary



Scale 1:500000



- Urban township (dense trees / bush)
- Urban township (open trees / bush)
- Urban township (low veg / grass)
- Urban township (bare)
- Urban village (open trees / bush)
- Urban village (low veg / grass)
- Urban built-up (dense trees / bush)
- Urban built-up (open trees / bush)
- Urban built-up (low veg / grass)
- Urban built-up (bare)
- Mines water permanent
- Mine buildings
- Erosion (donga)
- Bare none vegetated
- Urban commercial
- Urban industrial
- Urban informal (dense trees / bush)
- Urban informal (open trees / bush)
- Urban informal (low veg / grass)
- Urban informal (bare)
- Urban residential (dense trees / bush)
- Urban residential (open trees / bush)
- Urban residential (low veg / grass)
- Urban residential (bare)
- Urban school and sports ground
- Urban smallholding (dense trees / bush)
- Urban smallholding (open trees / bush)
- Urban smallholding (low veg / grass)
- Urban smallholding (bare)
- Urban sports and golf (dense tree / bush)
- Urban sports and golf (open tree / bush)
- Urban sports and golf (low veg / grass)
- Water seasonal
- Water permanent
- Wetlands
- Thicket / Dense bush
- Woodland / Open bush
- Grassland
- Low shrubland
- Cultivated comm fields (high)
- Cultivated comm fields (med)
- Cultivated comm fields (low)
- Cultivated comm pivots (high)
- Cultivated comm pivots (med)
- Cultivated comm pivots (low)
- Cultivated orchards (high)
- Cultivated orchards (med)
- Cultivated orchards (low)
- Cultivated subsistence (med)
- Cultivated subsistence (low)
- Plantations / Woodlots mature
- Plantation / Woodlots young
- Mines 1 bare
- Mines 2 semi-bare
- Mines water seasonal



**EMKHIWENI SUBSTATION
AND 400KV LINE FROM
EMKHIWENI SUBSTATION
TO SILMELA**

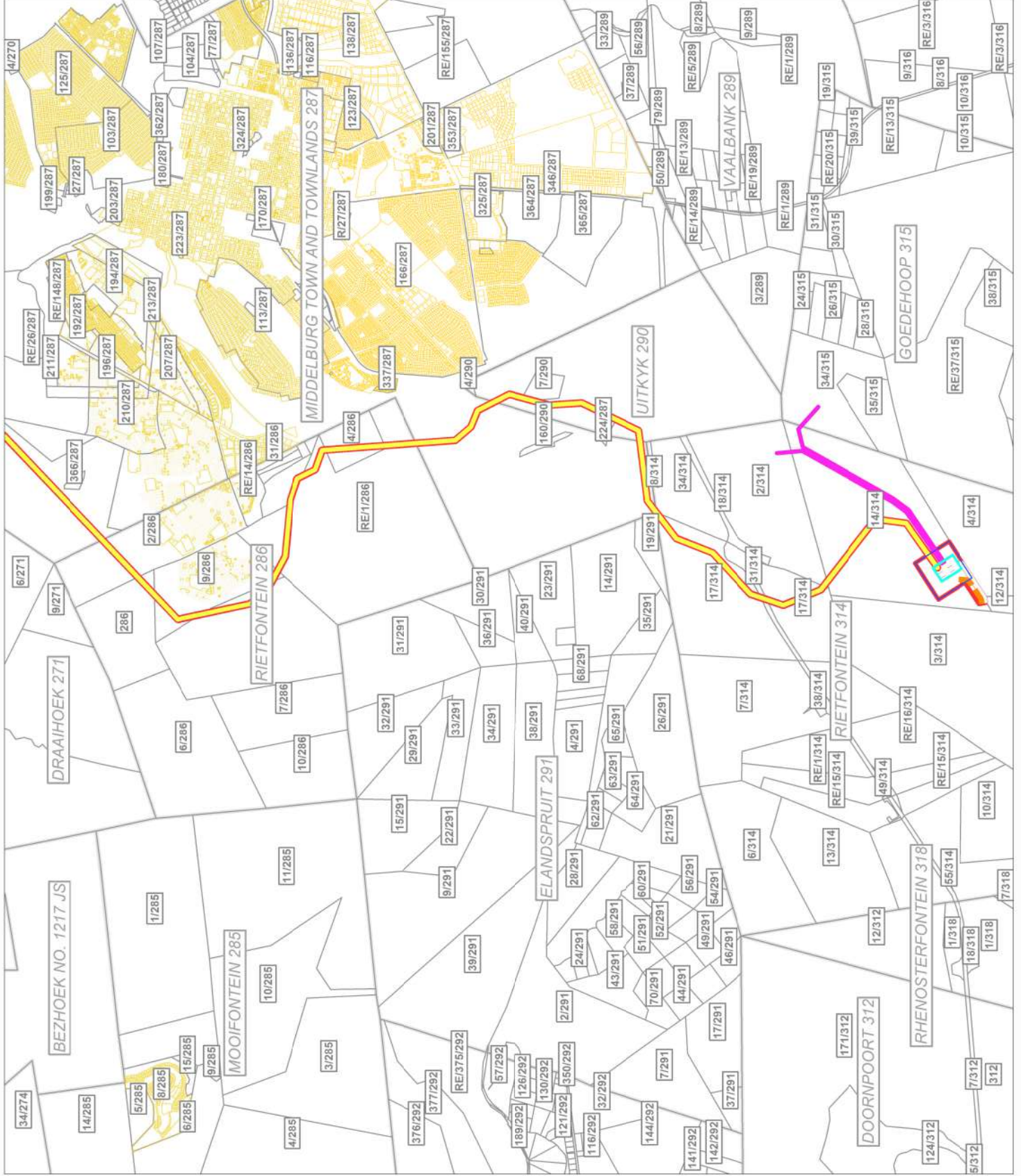
**Cadastral Map
Section 1**

Legend

- Limpopo
- Parent farms
- Farm portions
- Mpumalanga
- Parent farms
- Farm portions
- Erven
- Proposed Developments
- 55m Servitude
- Full Fence
- Access Road
- Internal Road
- Construction Road
- Proposed Powerline
- Loop in Lines for Substation
- Substation Fence
- Emkhiweni Substation
- Boundary



Scale 1:85000





**EMKHIWENI SUBSTATION
AND 400KV LINE FROM
EMKHIWENI SUBSTATION
TO SILMELA**

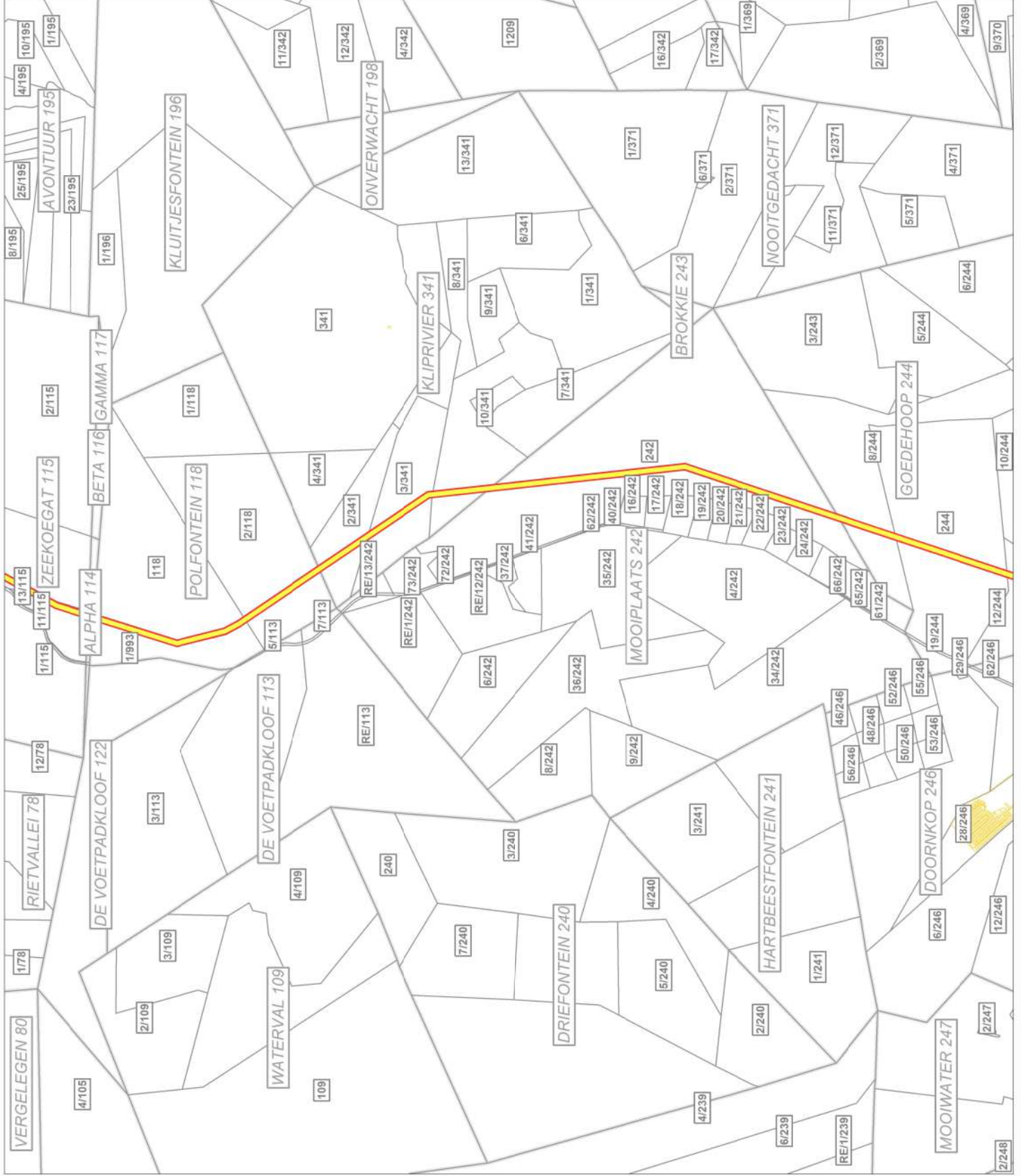
**Cadastral Map
Section 3**

Legend

- Limpopo
- Parent farms
- Farm portions
- Mpumalanga
- Parent farms
- Farm portions
- Erven
- Proposed Developments
- 55m Servitude
- Full Fence
- Access Road
- Internal Road
- Construction Road
- Proposed Powerline
- Loop in Lines for Substation
- Substation Fence
- Emkhiweni Substation
- Boundary



Scale 1:85000





**EMKHIWENI SUBSTATION
AND 400KV LINE FROM
EMKHIWENI SUBSTATION
TO SILIMELA**

**Cadastral Map
Section 4**

Legend

- Limpopo
- Parent farms
- Farm portions
- Mpumalanga
- Parent farms
- Farm portions
- Erven
- Proposed Developments**
- 55m Servitude
- Full Fence
- Access Road
- Internal Road
- Construction Road
- Proposed Powerline
- Loop in Lines for Substation
- Substation Fence
- Emkhiweni Substation
- Boundary



Scale 1:85000





**EMKHIWENI SUBSTATION
AND 400KV LINE FROM
EMKHIWENI SUBSTATION
TO SILMELA**

**Cadastral Map
Section 5**

Legend

Limpopo

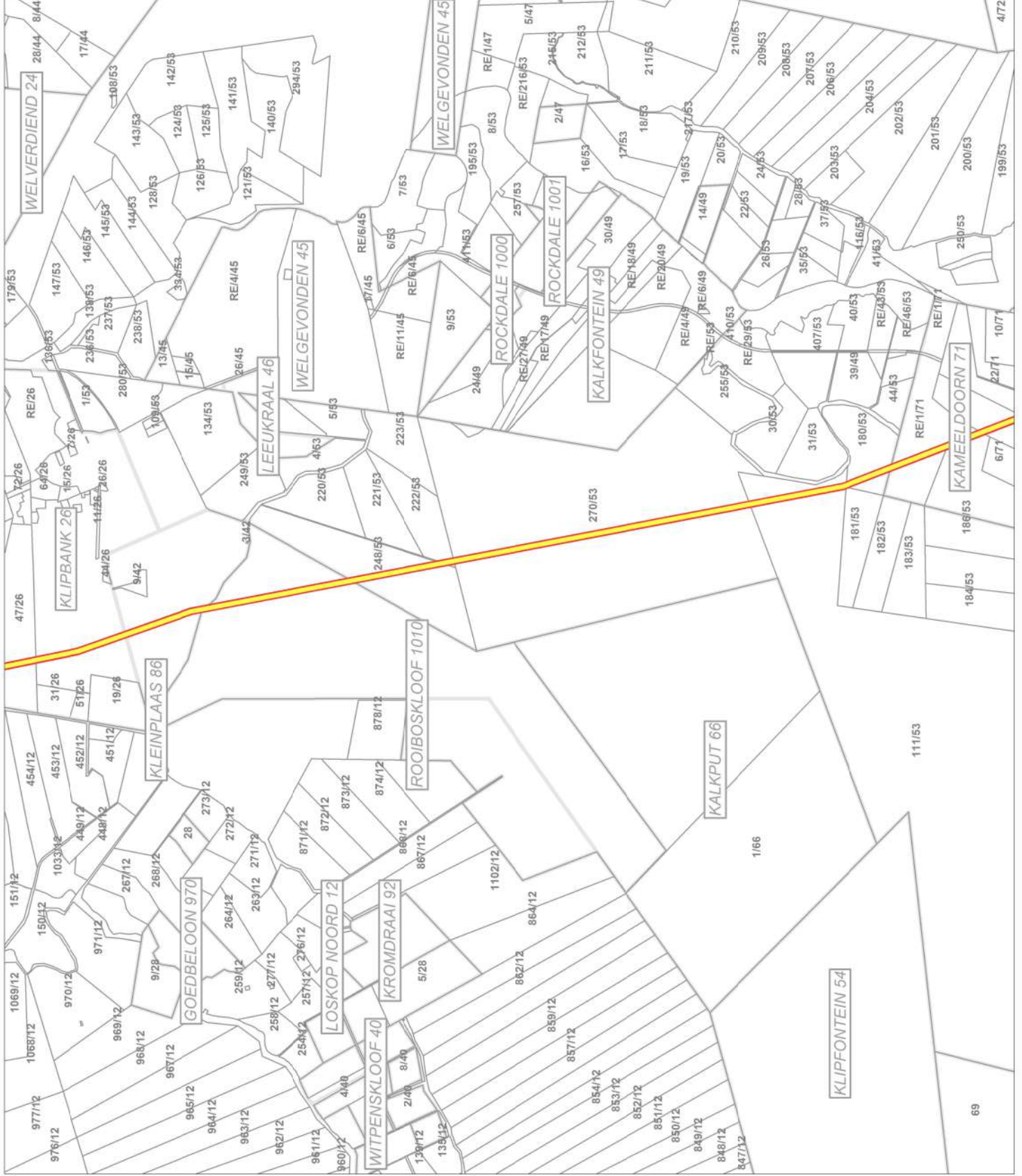
- Parent farms
- Farm portions
- Mpumalanga
- Parent farms
- Farm portions
- Erven

Proposed Developments

- 55m Servitude
- Full Fence
- Access Road
- Internal Road
- Construction Road
- Proposed Powerline
- Loop in Lines for Substation
- Substation Fence
- Emkhiweni Substation
- Boundary



Scale 1:85000





**EMKHIWENI SUBSTATION
AND 400KV LINE FROM
EMKHIWENI SUBSTATION
TO SILMELA**

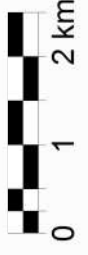
**Cadastral Map
Section 6**

Legend

- Limpopo**
- A** Parent farms
- Farm portions
- M** Mpumalanga
- A** Parent farms
- Farm portions
- E** Erven
- Proposed Developments**
- 55m Servitude
- Full Fence
- Access Road
- Internal Road
- Construction Road
- Proposed Powerline
- Loop in Lines for Substation
- Substation Fence
- Emkhiweni Substation
- Boundary



Scale 1:85000



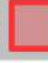



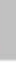



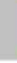


**EMKHIWENI SUBSTATION
AND 400KV LINE FROM
EMKHIWENI SUBSTATION
TO SILIMELA**

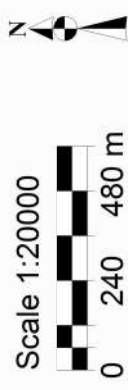
**Emkhiweni Substation
Layout Map**

Legend

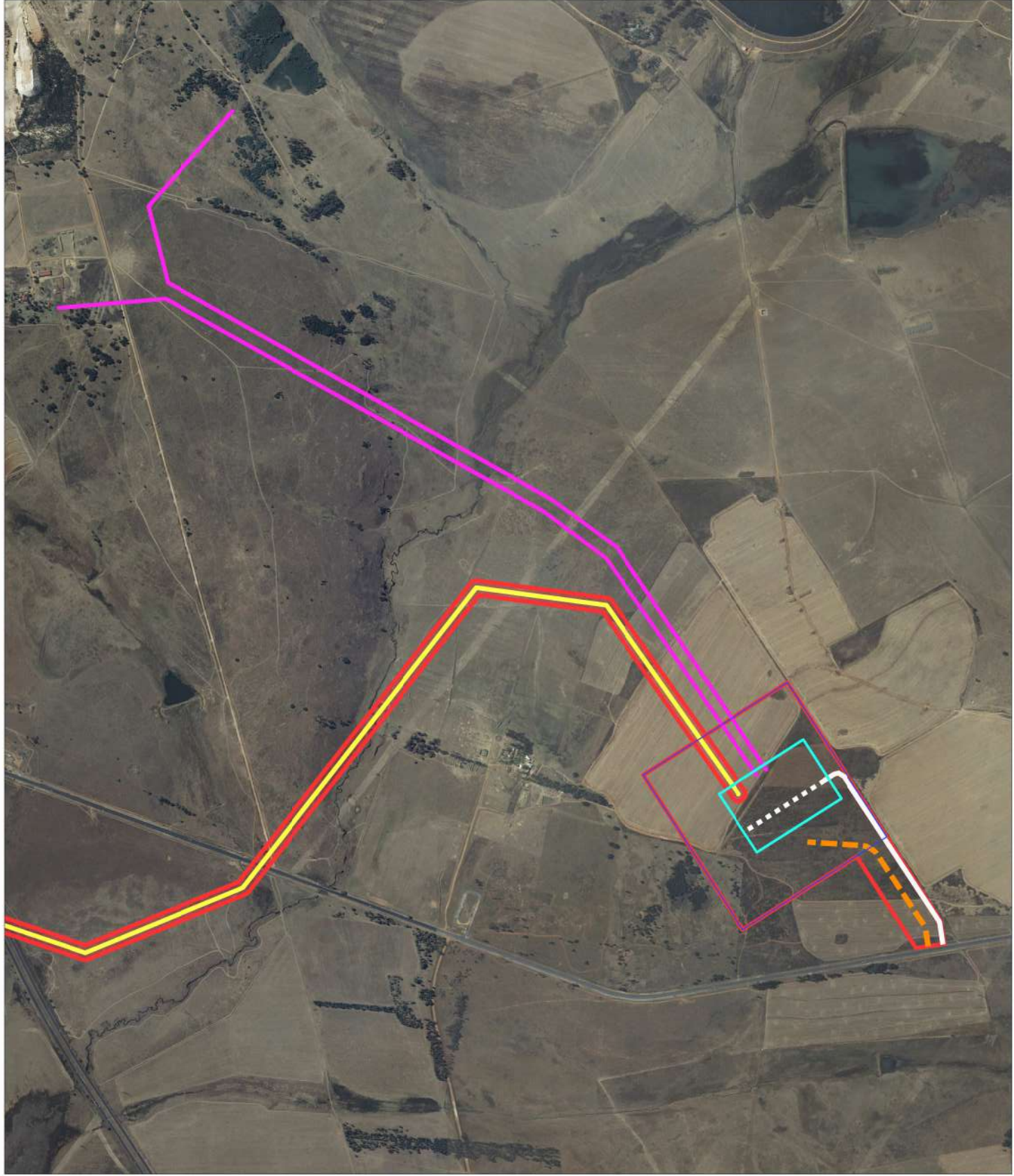
Proposed Developments

-  55m Servitude
-  Full Fence
-  Access Road
-  Internal Road
-  Construction Road
-  Proposed Powerline
-  Loop in Lines for Substation
-  Substation Fence
-  Emkhiweni Substation Boundary

Scale 1:20000



0 240 480 m



Appendix 3(b): Sensitivity Maps



**EMKHIWENI SUBSTATION
AND 400KV LINE FROM
EMKHIWENI SUBSTATION
TO SILIMELA**

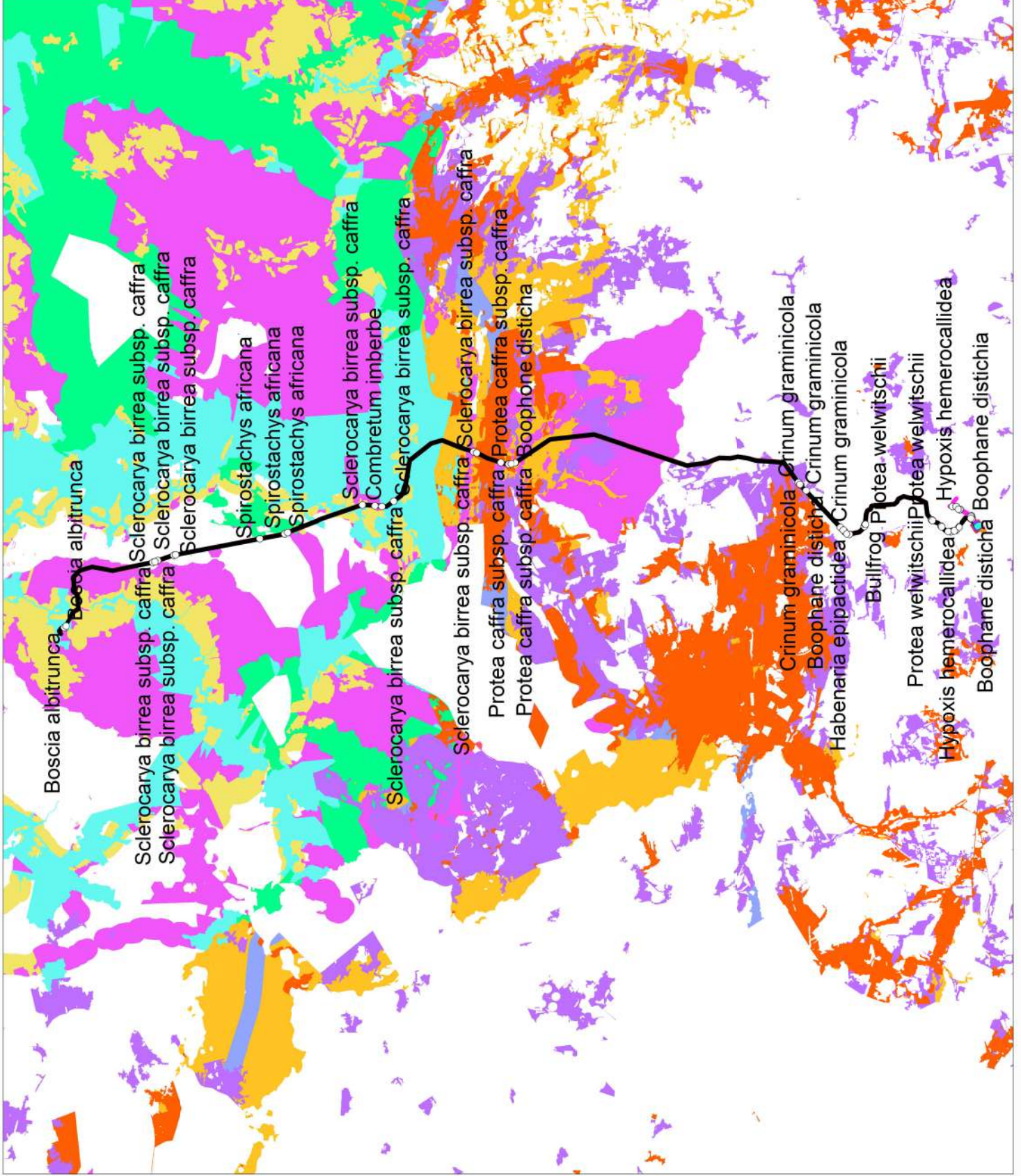
Sensitivity Map 1

Legend

- Proposed Developments**
- 55m Servitude
 - Full Fence
 - Access Road
 - Internal Road
 - Construction Road
 - Proposed Powerline
 - Loop in Lines for Substation
 - Substation Fence
 - Emkhiweni Substation Boundary
- Limpopo C-Plan**
- Critical Biodiversity Area 1
 - Critical Biodiversity Area 2
 - Ecological Support Area 1
 - Ecological Support Area 2
 - MBSP2
 - CBA Irreplaceable
 - CBA Optimal
 - ESA Landscape corridor
 - ESA Local corridor
 - Species of conservation concern



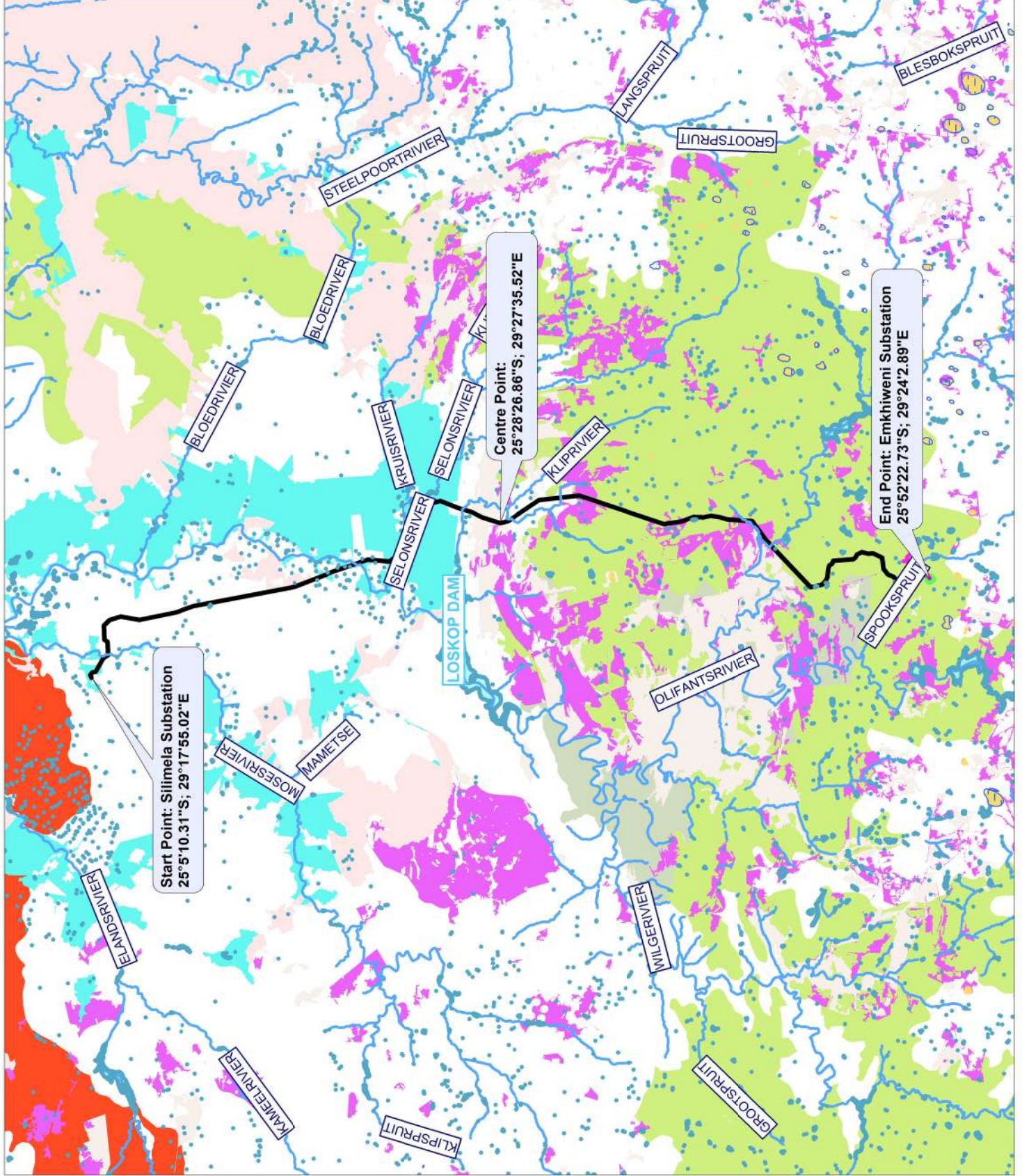
Scale 1:500000





EMKHIWENI SUBSTATION AND 400KV LINE FROM EMKHIWENI SUBSTATION TO SILIMELA
Sensitivity Map 3

- Legend**
- 400kV Powerline
 - Substation Boundary
 - Loop in Lines for Substation
 - Threatened ecosystems
 - Eastern Temperate Freshwater Wetlands
 - Loskop Mountainlands
 - Rand Highveld Grassland
 - Springbokvlakte Thornveld
 - Watercourses
 - Perennial center line
 - Dam
 - Perennial pan
 - CBA's
 - CBA Optimal
 - CBA Irreplaceable
 - Critical Biodiversity Area 2
 - Critical Biodiversity Area 1





EMKHIWENI SUBSTATION AND 400KV LINE FROM EMKHIWENI SUBSTATION TO SILIMELA

Sensitivity Map 2

- Legend**
- | | |
|---------------------------------|-------------------------------------------|
| Highways | Proposed Developments |
| tertiary_link | 55m Servitude |
| secondary_link | Full Fence |
| tertiary | Access Road |
| secondary | Internal Road |
| primary | Construction Road |
| trunk | Proposed Powerline |
| motorway | Loop in Lines for Substation |
| IBA | Substation Fence |
| Loskop Dam Nature Reserve | Emkhiweni Substation |
| Threatened ecosystems | Boundary |
| Rand Highveld Grassland | Heritage Resources |
| Protected Areas | Poishard Material |
| Kwaggavoevoetpad Nature Reserve | Railways |
| Loskop Dam Nature Reserve | rail |
| Loskop Dam Nature Reserve | Avifauna Sensitivities |
| Mabusa Nature Reserve | Collision risk sections |
| Mdala Nature Reserve | Delimited Wetlands |
| Mkombo Nature Reserve | Delimited Wetlands (unported KML) Wetland |
| Moutse | 32m Buffer |
| SS Skosana Nature Reserve | 32m Wetland Buffer |
| Withbank Nature Reserve | |
| Agricultural Sensitivities | |
| Powerline_Irrigation | |



Scale 1:500000

