

**TOWNSHIP ESTABLISHMENT ON THE REMAINDER OF  
PORTION 3 OF THE FARM DOORNPAN 193 IP, JB MARKS  
LOCAL MUNICIPALITY, NORTH WEST PROVINCE**

**1:100 RETURN PERIOD FLOODLINE DETERMINATION REPORT**

**November 2021**

PREPARED BY:



**Dalimede Projects (PTY) LTD**

No. 11 Pierre street, IT Park RentCo Building,  
Office 6,  
Bendor, Polokwane, South Africa, 0699

Tel: 015 291 0775

E-mail: [admin@dalimede.com](mailto:admin@dalimede.com)

PREPARED FOR:



**Nkanivo Development Consultants**

456 Rosebud street  
Tijger Vallei Ext 20  
Pretoria, 0081

Tel: +27 65 919 4732

Cell: +27 83 277 7347

Email: [info@nkanivo.co.za](mailto:info@nkanivo.co.za) / [nyiko@nkanivo.co.za](mailto:nyiko@nkanivo.co.za)

## Contents

1. INTRODUCTION .....	4
1.1 Study Request.....	4
1.2 Locality .....	4
1.3 Background .....	5
2. Methodology .....	7
2.1 General .....	7
2.2 Flood Modelling Methodology .....	7
2.3 Rational Method.....	8
2.4 Alternative Rational Method .....	8
2.5 Standard Design Flood (SDF) Method .....	9
3. ANALYSIS .....	10
4. CONCLUSION.....	20
5. REFERENCES .....	21
ANNEXURE 1: FLOODLINE CERTIFICATE.....	22
ANNEXURE 2: FLOODLINE DELINEATION .....	23
ANNEXURE 3: HEC-RAS PROGRAMME MODELLING RESULTS .....	24
ANNEXURE 4: LONGITUDINAL FLOW PROFILE FOR THE FLOOD PEAK.....	25
ANNEXURE 5: FLOW CROSS SECTIONS FOR THE FLOOD PEAK.....	26

## List of tables

Table 1 Design Rainfall Values for the site .....	9
Table 2 Rainfall data .....	10
Table 3 Catchment area.....	11
Table 4 Catchment Characteristic .....	14
Table 5 Rural area - Surface slope.....	14
Table 6 Rural area – Permeability .....	14
Table 7 Rural area - Vegetation.....	14
Table 8 Urban .....	15
Table 9 Run-off factors .....	15
Table 10 Hydrological input data .....	16
Table 11 Catchment characteristics .....	16
Table 12 Estimated stormwater flow (m <sup>3</sup> /s) .....	17
Table 13 Estimated stormwater flow (m <sup>3</sup> /s) .....	17
Table 14 Applications and limitation of flood calculation methods .....	18
Table 15 Catchment generated estimated 1:100 peak flow .....	18
Table 16 Stream Peak flows estimates .....	18

## List of Figures

Figure 1 Location of development site .....	4
Figure 2 Project site .....	5
Figure 3 Streams onsite (blue line) .....	6
Figure 4 Quaternary catchments .....	11
Figure 5 Catchment delineation (yellow line boundary) .....	12
Figure 6 Catchment .....	13

## 1. INTRODUCTION

### 1.1 Study Request

Dalimede Projects (PTY) LTD was appointed by Nkanivo Development Consultants to undertake a floodline assessment for the proposed development of a township on the Remainder of Portion 3 of the Farm 193 IP, in the JB Marks Local Municipality, North West Province

### 1.2 Locality

The site is situated 4.2km North West of Ventersdorp town CDB. Ventersdorp town is 95 kilometres south west of Rustenburg town, along the R30 highway. The area is administered by the JB Marks Local Municipality, in Dr Kenneth Kaunda District Municipality, North West Province, South Africa. GPS coordinates of site are 26°18'11.18"S 26°47'26.59"E.

The locality map is shown on the figures below.

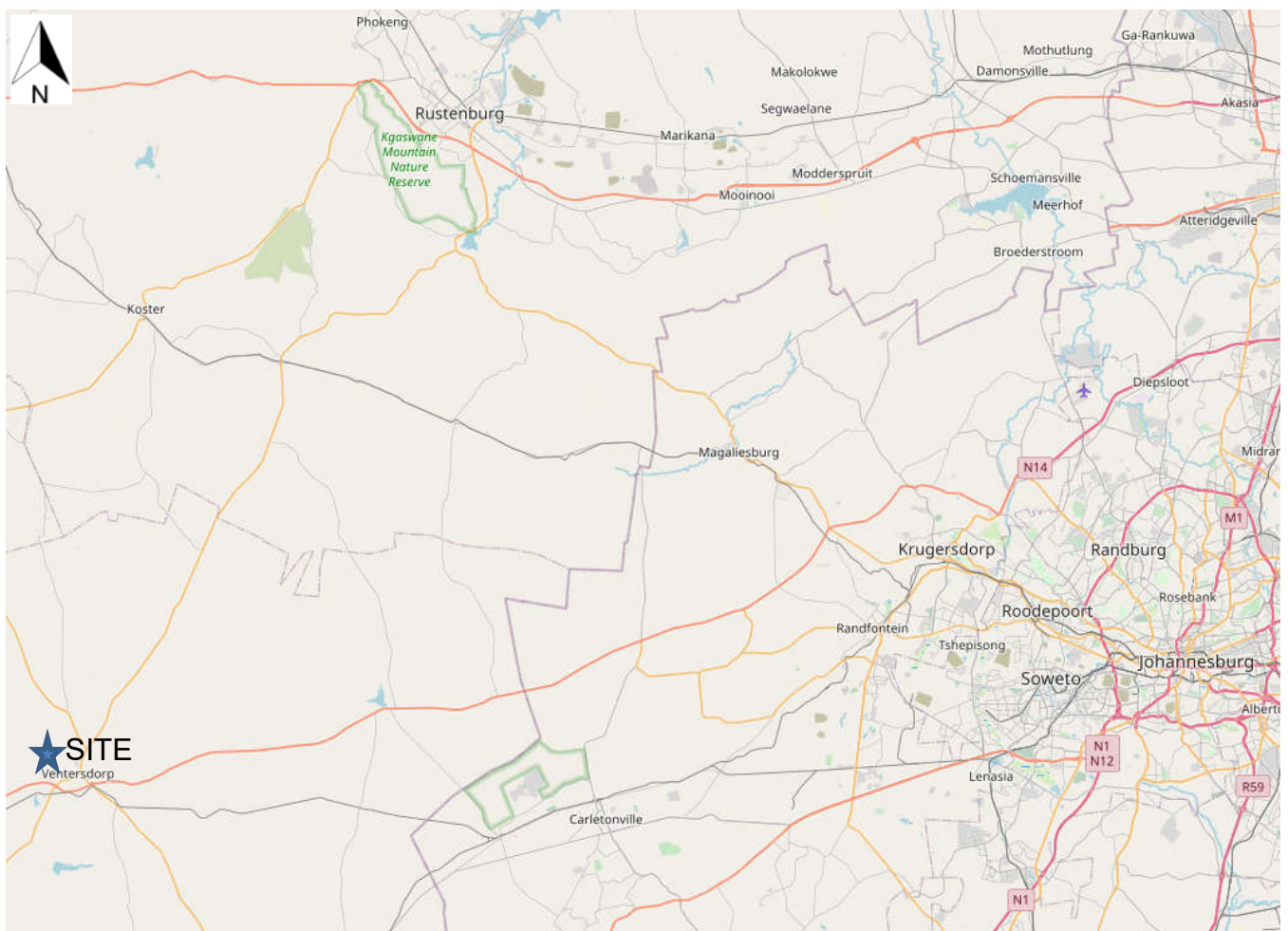


Figure 1 Location of development site

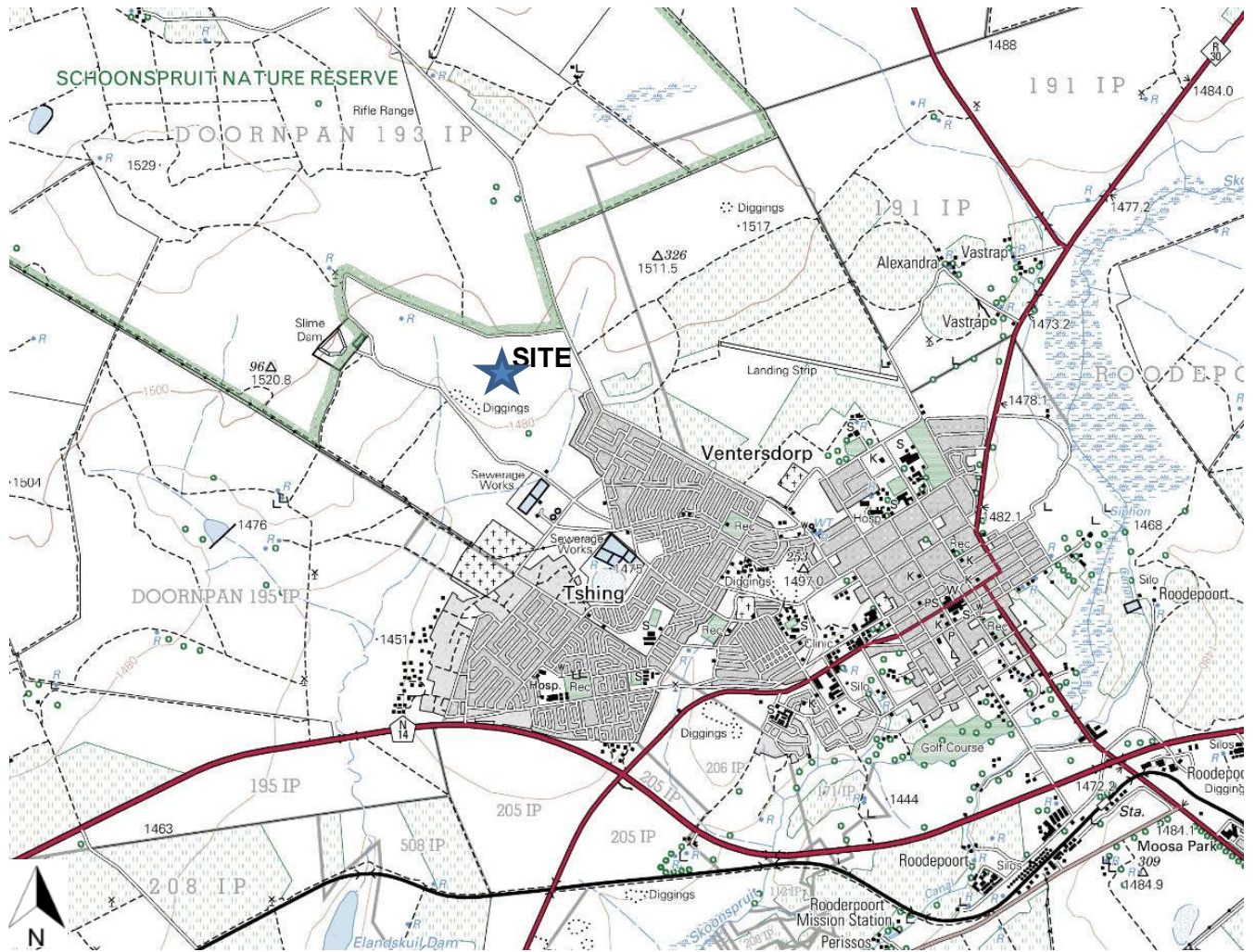


Figure 2 Project site

### 1.3 Background

A flood line analysis must be conducted along the stream / river traversing or in proximity to the site of proposed development. The stream onsite flows to the Skoonspruit river.

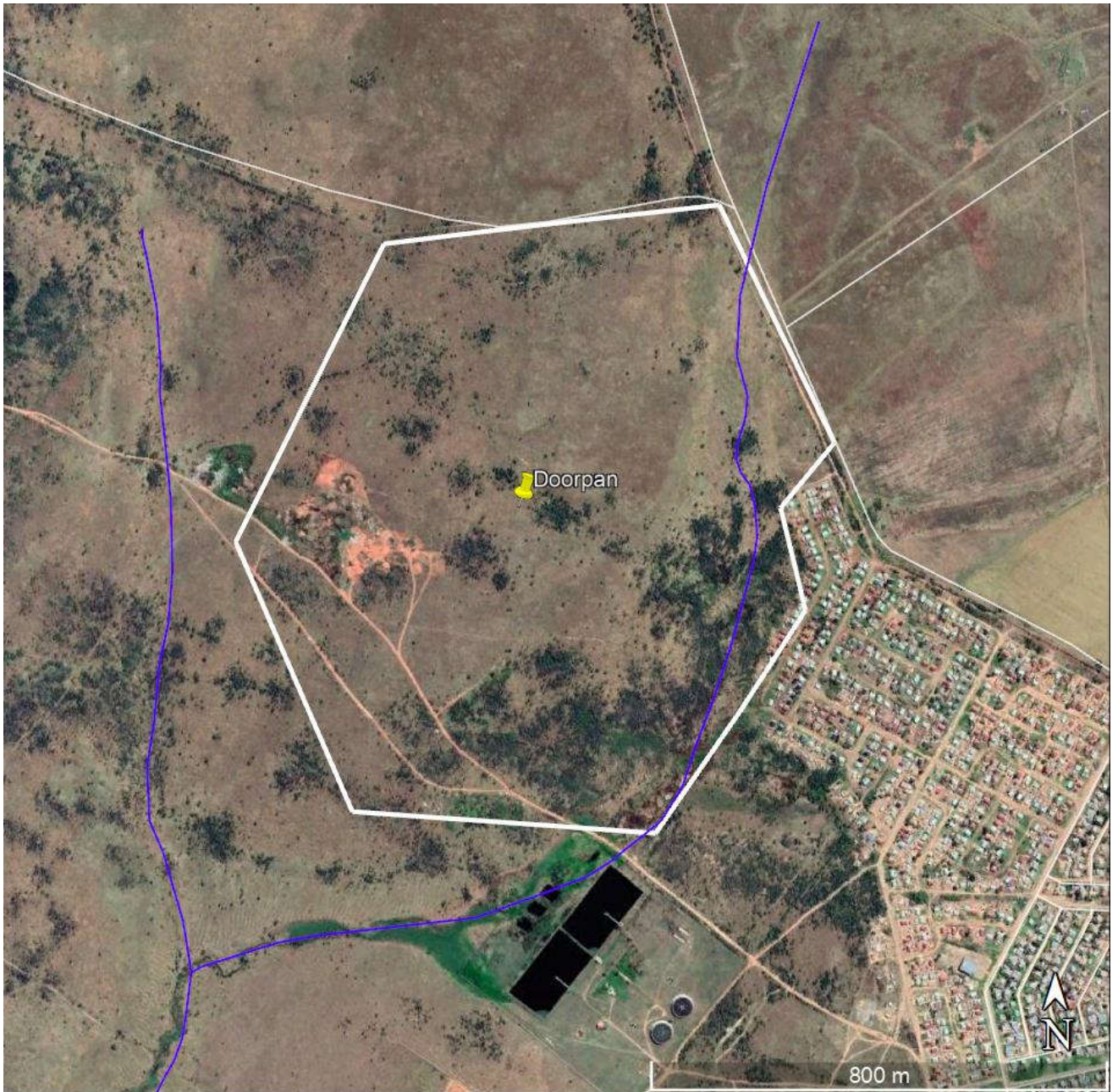


Figure 3 Streams onsite (blue line)

## 2. Methodology

### 2.1 General

The study consists of 2 major components:

- a flood analysis to determine the flood peak flow and,
- a surface water profile analysis to determine the flood line.

The magnitude of a flood is dependent on many factors, such as catchment size, slope and rainfall intensity. There are several different methods for determining floods and in general, different methods arrive at different estimates of the peak flow rate. The accepted approach is therefore to use several methods and then make a judgment call as to which method is the most applicable to the catchment under consideration. For this study, the Rational, Alternative Rational, Standard Design Flood (SDF) methods were used to determine the peak flow rate for the 1:100 return flood.

The reason for choosing these methods was because they are applicable to the catchment and to show the variance in the flood line between the method that produced the highest flood peak and the method that produced the lowest flood peak. Hence a flood line has been produced to take cognisance of the uncertainty related to estimating floods and flood lines.

The area of the catchment in which the adjacent stream is located was determined using GIS software as were additional properties applicable to the catchment, such as the length of the watercourse and the centroid of the catchment. The flood peak flows provide the flow used in the flood line analysis using the *HEC-RAS* software.

Other input required for *HEC-RAS* is channel geometry and roughness parameters. Channel cross-sections were taken at points along the river / stream course, within the area that contour lines were provided. The stream reaches that were analysed are in a natural state. See the figure below for the streams in catchment area.

### 2.2 Flood Modelling Methodology

Flood peaks for the catchments selected for flood modelling were estimated by the following methods using the Utility Programs for Drainage (UPD) software with the methods detailed in the SANRAL Drainage Manual, 2013:

- Rational Method (RM).
- Alternative Rational Method (ARM).
- Standard Design Flood (SDF).

### **2.3 Rational Method**

This method is based on the conservation of mass and is applicable for catchment areas below 15 km<sup>2</sup>. Aerial and time distributions of rainfall in this method are assumed to be uniform throughout the catchment. Flood peaks and empirical hydrographs can be determined by this method.

Where: The peak flow is obtained from the following relationship:

$$Q = \frac{CIA}{3.6}$$

Where: Q = peak flow (m<sup>3</sup>/s)

C = runoff coefficient (dimensionless)

I = average rainfall intensity over the catchment (mm/hour)

A = effective runoff area of the catchment (km<sup>2</sup>)

3.6 = conversion factor

### **2.4 Alternative Rational Method**

This method is based on the rational method with the point precipitation being adjusted using the Design Rainfall Estimation Methodology developed by Smithers and Schulze (2003) to consider local South African conditions.

Design rainfall values for the study area were extracted from the database of six closest to site South African Weather Service stations, using the Design Rainfall Utility developed by Smithers and Schulze (2000).



Table 1 Design Rainfall Values for the site

Duration		Return Period (Years) Design Rainfall Depth (mm)						
		1:2	1:5	1:10	1:20	1:50	1:100	1:200
5	m	9	12.2	14.5	16.7	19.6	21.8	24.1
10	m	13.3	18.2	21.5	24.7	29.1	32.4	35.8
15	m	16.8	22.9	27	31.2	36.6	40.9	45.2
30	m	21.3	29	34.2	39.5	46.4	51.7	57.2
45	m	24.4	33.3	39.3	45.3	53.2	59.4	65.6
1	h	26.9	36.7	43.3	49.9	58.7	65.5	72.4
1.5	h	30.9	42.1	49.7	57.3	67.4	75.2	83.1
2	h	34.1	46.4	54.9	63.2	74.3	82.9	91.6
4	h	39.6	53.9	63.7	73.4	86.3	96.2	106.4
6	h	43.2	58.8	69.5	80.1	94.1	105	116.1
8	h	46	62.6	74	85.2	100.2	111.7	123.5
10	h	48.2	65.7	77.6	89.4	105.1	117.2	129.6
12	h	50.2	68.3	80.7	93	109.3	121.9	134.8
16	h	53.4	72.7	85.9	99	116.3	129.7	143.5
20	h	56	76.3	90.1	103.8	122	136.1	150.5
24	h	58.3	79.3	93.7	108	126.9	141.6	156.5
1	h	48.4	66	77.9	89.8	105.5	117.7	130.2
2	h	59.5	81	95.7	110.3	129.7	144.6	159.9
3	h	67.1	91.4	108	124.5	146.3	163.2	180.4
4	h	72.6	98.8	116.8	134.6	158.2	176.4	195.1
5	h	77.1	105	124.1	143	168	187.5	207.3
6	h	81.1	110.3	130.4	150.3	176.6	197	217.8
7	h	84.5	115.1	136	156.7	184.1	205.4	227.1

## 2.5 Standard Design Flood (SDF) Method

This method is an empirically calibrated version of the Rational method. A major component in the development of the SDF method was the identification of regions with homogeneous flood producing characteristics. The geographic requirement was that the boundaries had to follow catchment watersheds and related to the Department of Water and Sanitation (DWS) drainage region numbering system, formally the Department of Water Affairs and Forestry (DWAF).

The regions are called 'basins' to avoid confusion with DWAF's drainage regions and the South African Weather Services' (SAWS) rainfall districts. Each basin must contain at least one flow gauging station from the DWAF published TR102 Catalogue of hydrological catchment parameters. The only information required for its application is the area of the catchment, the length and slope of the main stream / river, and the drainage basin in which it is located.

### 3. ANALYSIS

#### 3.1 Flood Analysis

To make the analysis possible, properties of the catchments that influence the runoff relating to the 1:100 return flood event need to be determined. These properties are described in the following sections.

#### 3.2 Catchment Properties

The catchment topography is mainly composed of flat areas (at 99% of catchment) with a small portion of hilly areas (at 1% of catchment). The topographic elevation in the catchment ranges from 1470m to 1520m above sea level. The landscape soils are mostly characterised by slow infiltration rates. The permeability being restricted (Schulze, 2010). The soils are classified to have a moderately high runoff potential.

The Mean Annual Precipitation (MAP) of the catchment was determined from weather stations gridded from in the vicinity of the site. The MAP for the catchment is estimated to be 619mm.

Table 2 Rainfall data

Station Name	SAWS	Distance	Record	Latitude		Longitude	MAP	
	Number	(km)	(Years)	(°)	(')	(°)	(')	(mm)
Ventersdorp (Hosp)	0473559_W	3.6	76	26	18	26	49	614
Palmietfontein	0473713_W	13	55	26	22	26	53	530
Klipplaatdrift (Skl)	0473416_W	15.4	62	26	26	26	44	490
Roodekop	0473686_W	17	74	26	26	26	52	569
Makokskraal "Benroy"	0473200_W	18.4	34	26	20	26	37	576
Buckingham	0474020_W	25.5	48	26	20	27	1	650

The climate is characterised by hot and rainy summers for a long period as well as cool and dry winters over a short period.

The climate is classified as warm and temperate. In winter, there is much less rainfall than in summer.

There are no river gauging stations on the catchment.

### 3.3 Catchment Delineation

The catchment area is within the Middle Vaal Water Management Area.

The catchment in the table below was delineated to cover the stream within or in proximity of the project boundary and were utilised to determine the flood peaks for 1:100 return extreme events. The catchment information is listed in the table below.

Table 3 Catchment area

Catchment Site	Catchment area (km <sup>2</sup> )	Remark	Quaternary catchment
C1	2.586	Catchment	C24E

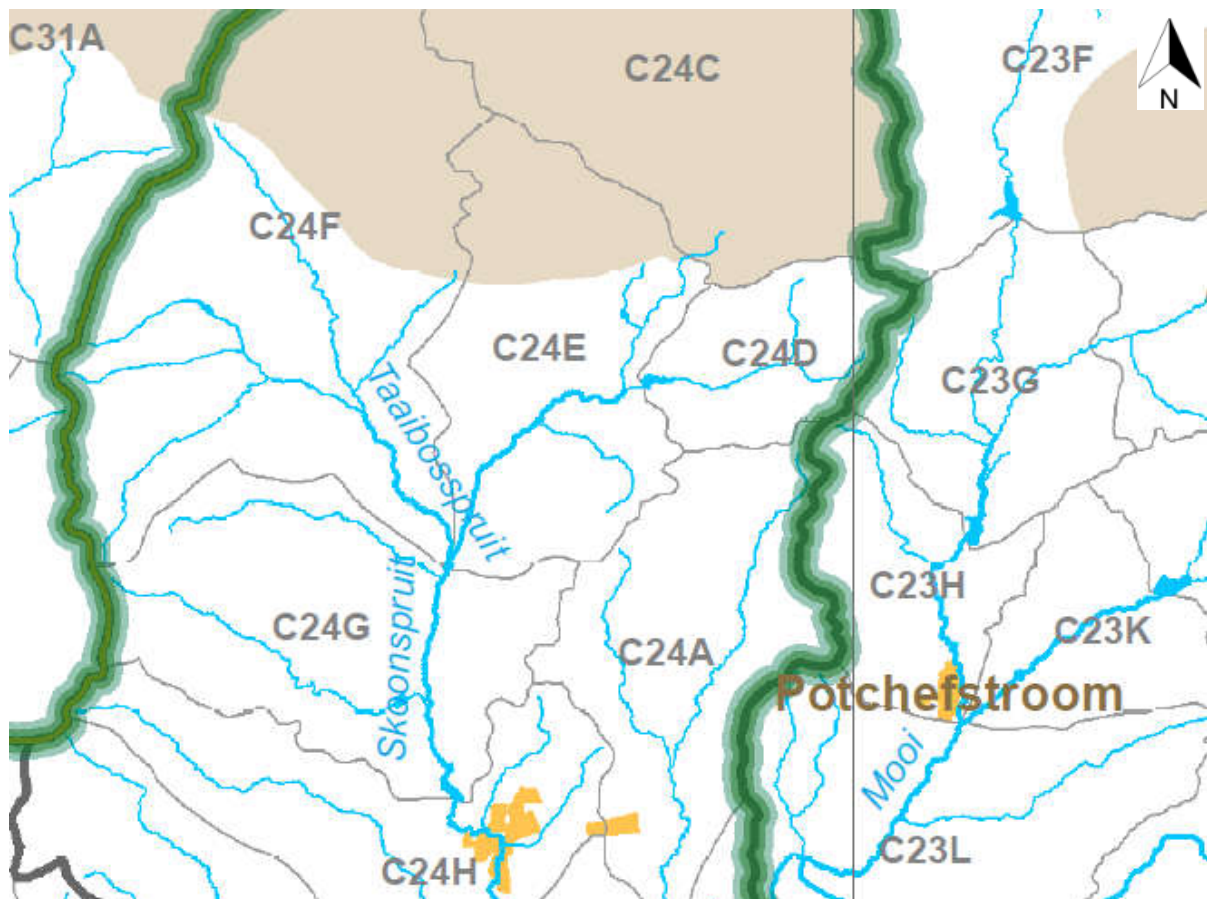


Figure 4 Quaternary catchments

The delineated catchment is shown in the figures below.

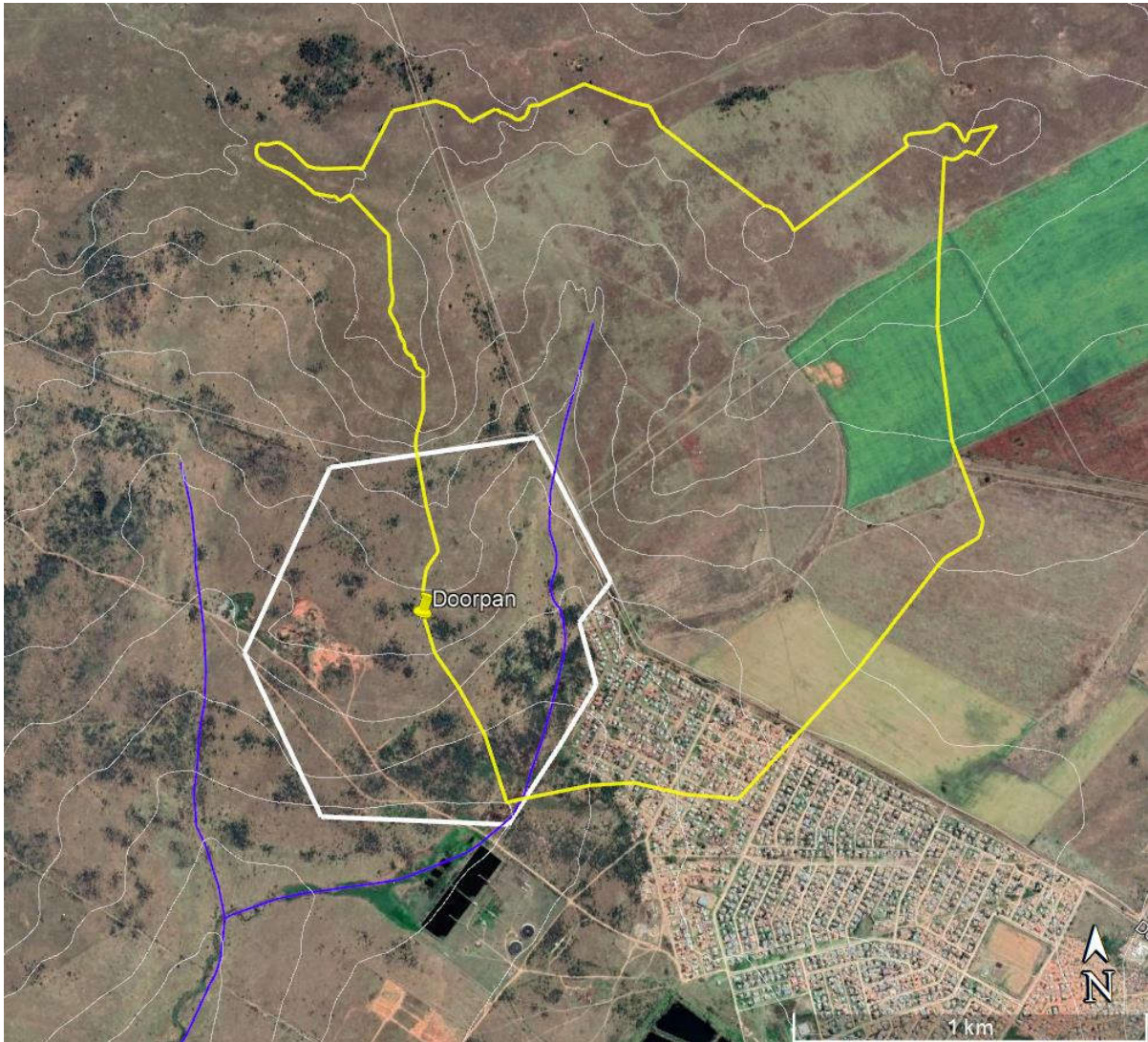


Figure 5 Catchment delineation (yellow line boundary)

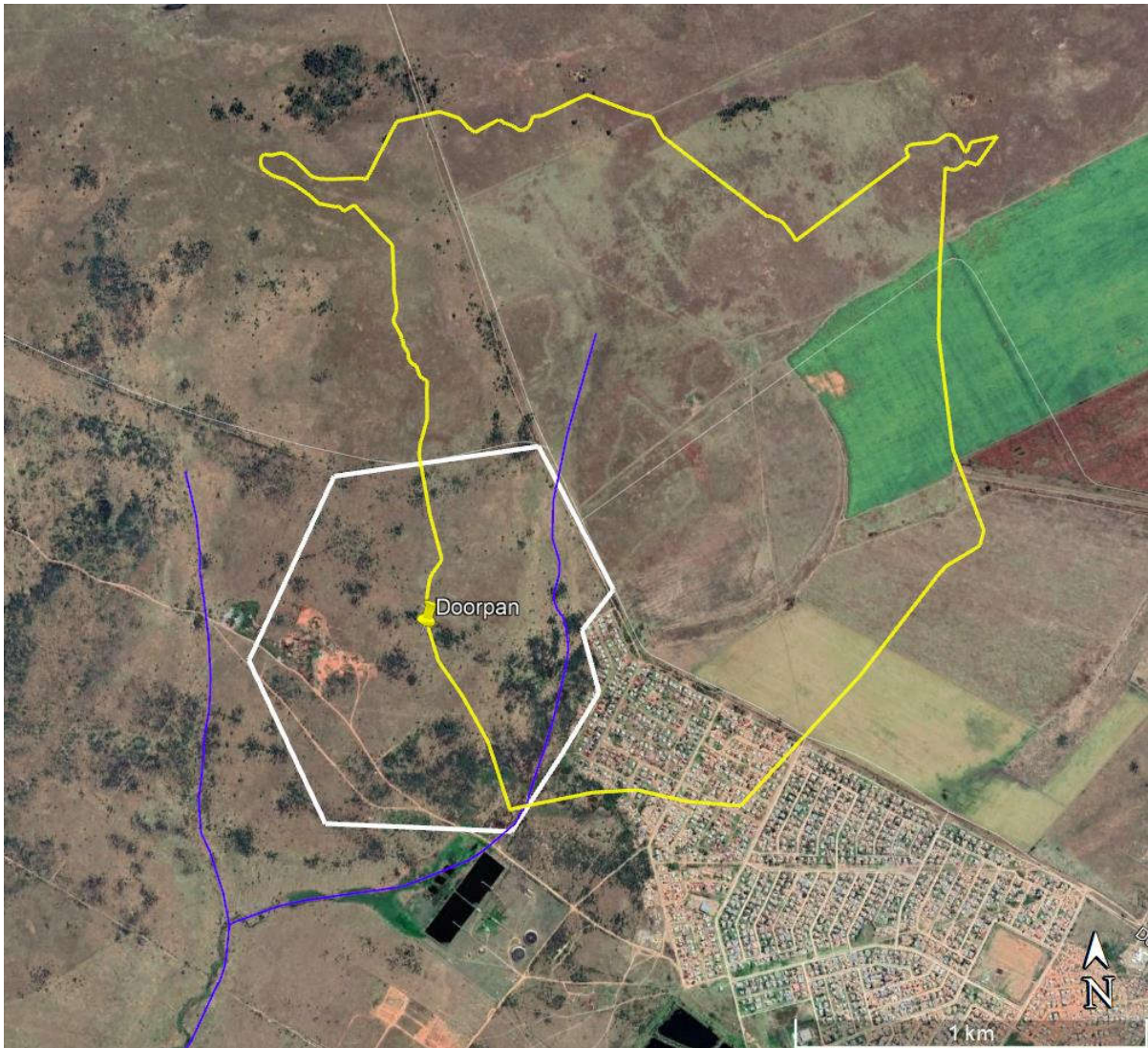


Figure 6 Catchment

### 3.4 Catchment Characteristics

The catchment characteristics are shown the following tables below.

Table 4 Catchment Characteristic

Characteristic	Rural	Urban	Lakes	Total
	Distribution	Distribution	Distribution	
Catchment	%	%	%	(%)
C1	92%	8%	0%	100%

Table 5 Rural area - Surface slope

Rural area - Surface slope	Lakes and pans (<3%)	Flat area (3 to 10%)	Hilly (10 to 30%)	Steep areas (>30%)	Total
	Distribution	Distribution	Distribution	Distribution	
Catchment	(%)	(%)	(%)	(%)	(%)
C1	59%	40%	1%	0%	100%

Table 6 Rural area – Permeability

Rural area - Permeability	Very permeable	Permeable	Semi-permeable	Impermeable	Total
	Distribution	Distribution	Distribution	Distribution	
Catchment	(%)	(%)	(%)	(%)	(%)
C1	3%	20%	75%	2%	100%

Table 7 Rural area - Vegetation

Rural area - Vegetation	Thick bush & forests	Light bush & cultivated land	Grasslands	Bare	Total
	Distribution	Distribution	Distribution	Distribution	
Catchment					(%)
C1	3%	30%	62%	5%	100%

Table 8 Urban

Catchment	<u>Lawns</u>			<u>Residential areas</u>			<u>Industry</u>			<u>Business</u>			
	Sandy, flat (%)	Sandy, steep (%)	Heavy soil, flat (%)	Heavy soil, steep (%)	Houses (%)	Flats (%)	Light industry (%)	Heavy industry (%)	City centre (%)	Suburban (%)	Streets (%)	Maximum flood (%)	Total (%)
C1			5%		70%						25%		100.0%

Table 9 Run-off factors

Catchment	Run-off factor			
	Rural (C <sub>R</sub> )	Urban (C <sub>U</sub> )	Lakes (C <sub>L</sub> )	Combined (C)
C1	0.372	0.596	0	0.390

Table 10 Hydrological input data

Catchment	Catchment Area (km <sup>2</sup> )	Longest water course (km)	Height difference 1085 method (m)	Days thunder was heard (No.)	Area Dolomite (%)	Mean Annual Precipitation (mm)	SDF Basin no. (No.)
C1	2.586	2.442	33.0	60	0	619	7

Table 11 Catchment characteristics

Catchment Site	Catchment area (km <sup>2</sup> )	Longest water course, L (km)	Height difference along 10-85 slope (m)	Average slope S <sub>av</sub> (m/m)	Time of concentration, T <sub>c</sub> (hours)	% Slope	MAP (mm)	Run-off factor C
C1	2.586	2.442	33.0	0.01800490	0.619418703	1.80%	619	0.39



### 3.5 Flood magnitudes

The flood magnitudes from the 1:2 return up to 1:100 return floods are presented in the Tables below.

Table 12 Estimated stormwater flow (m<sup>3</sup>/s)

	Rational method							Alternative rational method						
	1:2	1:5	1:10	1:20	1:50	1:100		1:2	1:5	1:10	1:20	1:50	1:100	
<b>Return Catchment</b>														
C1	8.98	12.90	17.18	22.25	30.26	38.88		7.97	14.20	19.56	25.39	33.31	40.15	

Table 13 Estimated stormwater flow (m<sup>3</sup>/s)

	Standard design flood method				
	1:2	1:5	1:10	1:20	1:50
<b>Return Catchment</b>					
C1	3.51	12.31	20.49	29.75	43.56

The applications and limitation of flood calculation methods are shown in the table below.

Table 14 Applications and limitation of flood calculation methods

Method	Recommended maximum area (km <sup>2</sup> )	Return period of floods that could be determined
Statistical method	No limitation (larger areas)	1:2 to 1:200
Rational method	Usually less than 15km <sup>2</sup>	1:2 to 1:200
Unit Hydrograph method	15km <sup>2</sup> to 5,000km <sup>2</sup>	1:2 to 1:100
Standard Design Flood method	No limitation	1:2 to 1:200
SCS-SA method	Less than 30km <sup>2</sup>	1:2 to 1:100
Empirical methods	No limitation (larger areas)	1:10 to 1:100

### 3.6 Flood magnitudes for the 1:100-year floods

The Rational, Alternative Rational (AR), and Standard Design Flood (SDF) methods were used to select the flood peak.

The results from the various methods were similar, hence the method with the highest magnitude of the peak flow was used for the 1:100 return flood for a sub-catchment.

The selected maximum peak flows are shown in the table below.

Table 15 Catchment generated estimated 1:100 peak flow

<b>C1</b>	Catchment, estimated 100year peak flow =	55.17	m <sup>3</sup> /s
-----------	--	-------	-------------------

The estimated 1:100 stream flow is listed in the table below.

Table 16 Stream Peak flows estimates

Stream - Reach	Flow (m <sup>3</sup> /s)
Stream 1	55.17

### **3.7 Flood line Modelling**

The HEC-RAS model was used to determine the flood line during the event of a flood for any return period, and in this case the 1:100-year floods were modelled.

### **3.8 Cross section profile**

Cross sectional data was generated using GIS and CAD software, as well as the 0.5m contour lines that were obtained from the topographic surveyor appointed by the Client. Sections shown in Annexure 5 were used to approximate the geometry for the river / stream.

### **3.9 Flood profiles**

Annexure 4 shows the longitudinal profile for the 1:100 return peak flow.

#### **4. CONCLUSION**

The determination of the 1:100 return period floodlines was undertaken for the site of the proposed development. The results of this determination provide an indication as to the extent of the areas that will be inundated by the 1:100 return design flood.

It is recommended that a buffer zone of 20m should be provided between the 1:100 flood line and any proposed development.

The lateral extent of the 1:100 return flood line is shown in Annexure 2. These flood lines have also been provided as Gauss Conform WGS84 LO27 coordinated CAD dwg softcopy files.

## **5. REFERENCES**

- Smithers J.C. and Schulze R.E. (2002): Drainage rainfall and flood estimation in South Africa, WRC project KS/1060.
- The South African National Roads Agency Limited (2013): Drainage manual, 6<sup>th</sup> Edition.

## ANNEXURE 1: FLOODLINE CERTIFICATE



Branch Offices  
Polokwane, Limpopo

**DALIMEDE PROJECTS (PTY) LTD**  
No. 11 Pierre street,  
IT Park RentCo Building, Office 6,  
Bendor, Polokwane, South Africa, 0699  
Tel: 015 291 0775, Cell: 079 368 8414,  
E-mail: admin@dalimede.com

Reg. No: 2014 / 233383 / 07

---

## FLOOD LINE CERTIFICATE

Dalimede Projects (PTY) LTD was appointed by Nkanivo Development Consultants to undertake a floodline assessment for the proposed development of a township on the Remainder of Portion 3 of the Farm 193 IP, in the JB Marks Local Municipality, North West Province

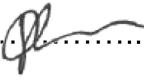
This will entail to delineate the 1:100 return flood line.

**Site:** *Portion 3 of the farm Doornpan 193 IP*  
**Township Name:** *Doornpan, Ventersdorp town*  
**Co-ordinates:** *26°18'11.18"S 26°47'26.59"E*  
**Municipality:** *JB Marks Local Municipality, in Dr Kenneth Kaunda District*

In terms of section 114 of the National Water Act, Act 36 of 1998 the above-mentioned property is partially affected by flood water within the 1:100 period from the stream / river as indicated in the floodline report. Development must be done outside of the floodline.

It is recommended that a buffer zone of 20m should be provided between the 1:100 flood line and any proposed development.

Thus, done and signed in Polokwane on this day 26 May 2021

Signature:  .....

Engineer: Litmos Mthunzi

Pr Tech Eng

Pr no.: ECSA 201770075




---

## ANNEXURE 2: FLOODLINE DELINEATION



**NOTES**

**KEY**

-  FLOODLINE
-  CROSS SECTION
-  STREAM / RIVER

**REVISIONS**

REV	DATE	SIGN	DESCRIPTION
0	...././..	...	.....

**CLIENT**

**Nkanivo**  
Development Consultants  
Nkanivo Development Consultants  
456 Rosebud street  
Tiger Valley EX 20  
Pretoria, 0081

Tel: +27 65 919 4732  
Cell: +27 83 277 7347  
Email: info@nkanivo.co.za / nyilko@nkanivo.co.za

**CONSULTANT**



**Dalimede Projects (PTY) LTD**  
No. 11 Pierre street, IT Park RentCo Building, Office 6,  
Bendor, Polokwane, South Africa, 0699

Tel: 015 291 0775, Cell: 079 368 8414,  
E-mail: admin@dalimede.com  
GPS: Lat: -29.894692 Long: 29.479758

**DRAWING STATUS**

FOR INFORMATION

**PROJECT TITLE**

Feasibility study for township establishment on Portion 3 of the farm Doornpan 193 IP, Ventersdorp town, North West Province

**PROJECT LOCATION**

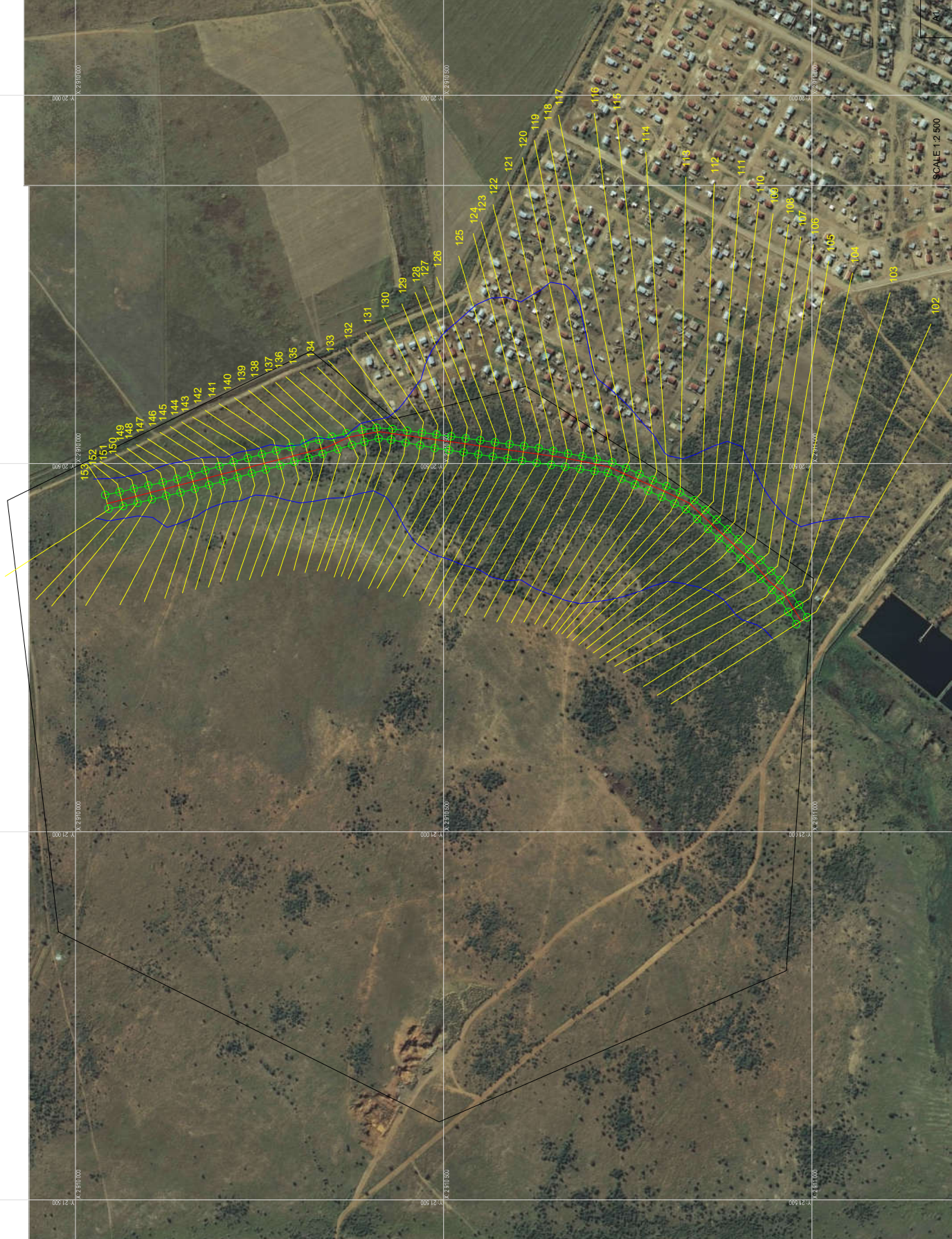
The site is situated 4.2km North West of Ventersdorp town CDR Ventersdorp town is 95 kilometres south west of Rustenburg town, along the R30 highway. GPS coordinates of site: 28°18'11.16" S, 29°47'26.59" E

**DRAWING DESCRIPTION**

FLOODLINE DELINEATION 1:100 RETURN PERIOD

SCALE	DATE	DESIGNED	DRAWN	CHECKED
As Shown	May 2021	LM	HM	CM

DRAWING No.	REVISION
DOORINPAN/FL01	B



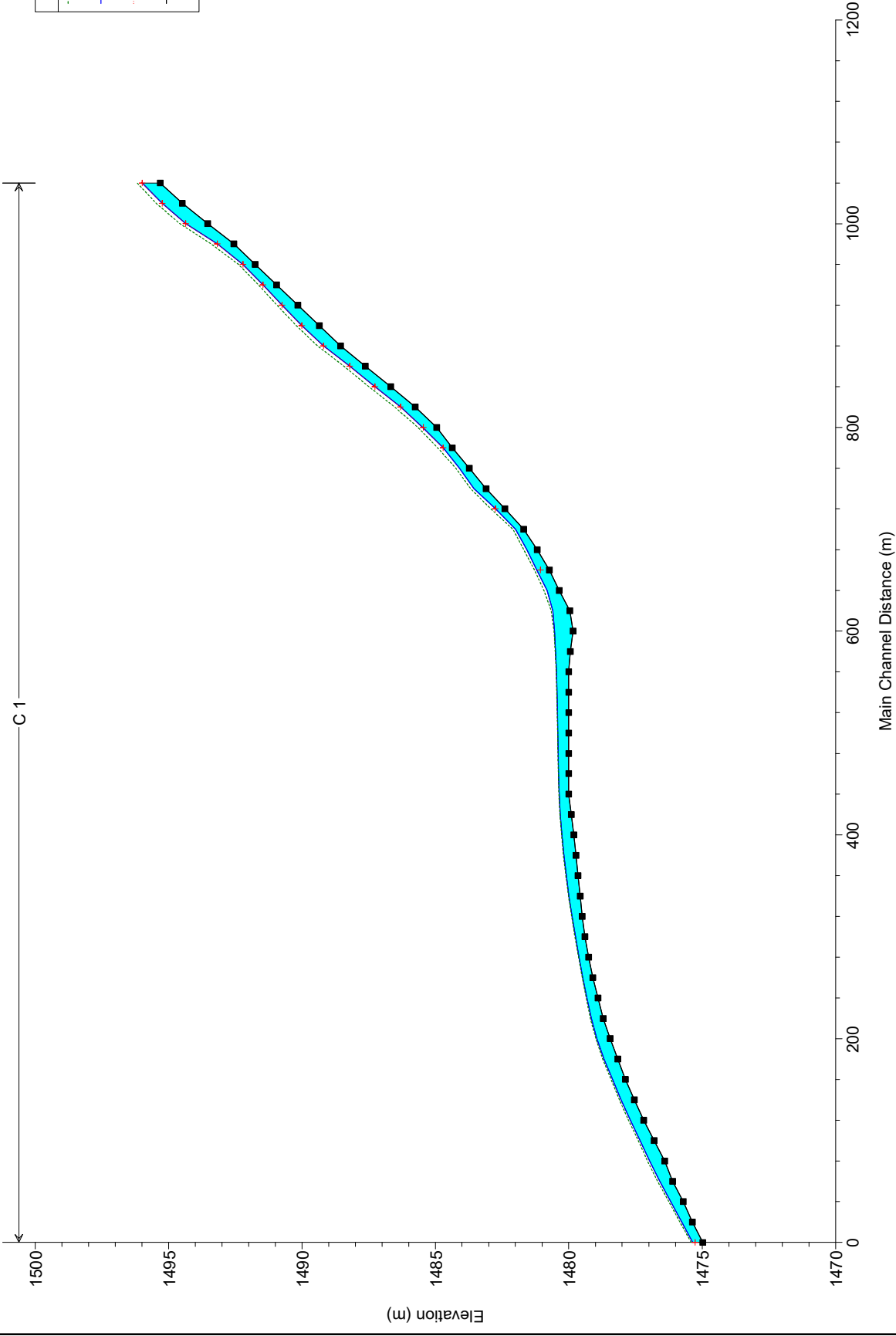
## ANNEXURE 3: HEC-RAS PROGRAMME MODELLING RESULTS

HEC-RAS Plan: Current mode River: C Reach: 1 Profile: 1:100

Reach	River Sta	Profile	Q Total (m3/s)	Min Ch El (m)	W.S. Elev (m)	Crit W.S. (m)	E.G. Elev (m)	E.G. Slope (m/m)	Vel Chnl (m/s)	Flow Area (m2)	Top Width (m)	Froude # Chl
1	153	1:100	55.17	1495.32	1495.99	1495.99	1496.19	0.030290	2.42	31.72	82.49	1.01
1	152	1:100	55.17	1494.49	1495.24	1495.24	1495.46	0.028139	2.48	30.11	71.69	0.99
1	151	1:100	55.17	1493.54	1494.36	1494.36	1494.59	0.027133	2.49	29.51	66.78	0.98
1	150	1:100	55.17	1492.56	1493.18	1493.18	1493.41	0.030938	2.51	28.66	65.67	1.03
1	149	1:100	55.17	1491.76	1492.22	1492.21	1492.39	0.038427	2.27	31.65	90.16	1.09
1	148	1:100	55.17	1490.96	1491.46	1491.46	1491.64	0.036326	2.35	31.84	90.20	1.08
1	147	1:100	55.17	1490.15	1490.75	1490.75	1490.94	0.030281	2.38	32.46	88.49	1.01
1	146	1:100	55.17	1489.35	1490.00	1490.00	1490.21	0.029886	2.46	30.84	78.64	1.01
1	145	1:100	55.17	1488.56	1489.20	1489.20	1489.42	0.031392	2.46	28.85	66.69	1.03
1	144	1:100	55.17	1487.63	1488.21	1488.21	1488.43	0.034021	2.43	28.27	66.72	1.06
1	143	1:100	55.17	1486.68	1487.27	1487.27	1487.50	0.034713	2.40	27.51	65.08	1.07
1	142	1:100	55.17	1485.76	1486.31	1486.31	1486.53	0.039093	2.23	27.09	65.87	1.09
1	141	1:100	55.17	1484.95	1485.48	1485.45	1485.66	0.033913	1.73	29.75	72.18	0.97
1	140	1:100	55.17	1484.37	1484.72	1484.72	1484.91	0.040526	1.23	28.63	73.61	0.96
1	139	1:100	55.17	1483.73	1484.10		1484.23	0.027076	1.07	34.36	84.52	0.79
1	138	1:100	55.17	1483.10	1483.55		1483.68	0.027955	1.45	35.31	93.45	0.87
1	137	1:100	55.17	1482.40	1482.75	1482.75	1482.93	0.045691	1.32	29.89	85.39	1.02
1	136	1:100	55.17	1481.69	1481.99		1482.09	0.019943	0.79	39.09	90.60	0.66
1	135	1:100	55.17	1481.18	1481.57		1481.69	0.027386	1.42	36.83	102.11	0.86
1	134	1:100	55.17	1480.73	1481.20	1481.06	1481.28	0.014883	1.31	45.56	107.41	0.67
1	133	1:100	55.17	1480.36	1480.82		1480.93	0.025678	1.84	38.03	103.36	0.89
1	132	1:100	55.17	1479.96	1480.60		1480.65	0.007829	1.29	57.63	122.34	0.52
1	131	1:100	55.17	1479.84	1480.54		1480.56	0.002629	0.77	91.55	165.12	0.30
1	130	1:100	55.17	1479.94	1480.50		1480.51	0.001916	0.56	110.47	204.35	0.25
1	129	1:100	55.17	1480.00	1480.47		1480.48	0.001609	0.48	126.76	255.54	0.23
1	128	1:100	55.17	1480.00	1480.45		1480.45	0.000948	0.36	158.88	293.75	0.17
1	127	1:100	55.17	1480.00	1480.43		1480.43	0.000807	0.32	174.83	327.22	0.16
1	126	1:100	55.17	1480.00	1480.42		1480.42	0.000687	0.29	187.22	342.98	0.14
1	125	1:100	55.17	1480.00	1480.40		1480.41	0.000531	0.25	208.46	373.50	0.13
1	124	1:100	55.17	1480.00	1480.39		1480.39	0.000806	0.30	187.45	389.12	0.15
1	123	1:100	55.17	1480.00	1480.37		1480.37	0.001510	0.40	157.28	400.42	0.21
1	122	1:100	55.17	1479.90	1480.32		1480.33	0.002654	0.52	132.24	397.30	0.28
1	121	1:100	55.17	1479.81	1480.27		1480.28	0.003195	0.62	126.25	410.23	0.31
1	120	1:100	55.17	1479.73	1480.19		1480.20	0.004014	0.73	118.58	424.60	0.35
1	119	1:100	55.17	1479.65	1480.10		1480.12	0.004875	0.81	109.52	435.07	0.39
1	118	1:100	55.17	1479.57	1479.99		1480.01	0.005788	0.84	93.27	317.27	0.42
1	117	1:100	55.17	1479.50	1479.87		1479.90	0.006004	0.78	90.08	305.99	0.42
1	116	1:100	55.17	1479.39	1479.74		1479.77	0.006683	0.76	83.53	282.88	0.43
1	115	1:100	55.17	1479.26	1479.61		1479.64	0.006456	0.75	82.41	266.75	0.42
1	114	1:100	55.17	1479.10	1479.47		1479.50	0.007225	0.83	78.58	242.50	0.45
1	113	1:100	55.17	1478.91	1479.32		1479.35	0.008090	0.94	75.25	237.85	0.49
1	112	1:100	55.17	1478.71	1479.16		1479.19	0.009478	1.12	74.12	259.05	0.54
1	111	1:100	55.17	1478.45	1478.95		1478.99	0.010486	1.25	72.87	266.62	0.58
1	110	1:100	55.17	1478.17	1478.68		1478.73	0.015904	1.55	62.81	259.63	0.71
1	109	1:100	55.17	1477.87	1478.37		1478.42	0.015766	1.48	59.13	218.00	0.70
1	108	1:100	55.17	1477.54	1478.04		1478.10	0.015759	1.55	56.42	194.38	0.71
1	107	1:100	55.17	1477.19	1477.68		1477.76	0.018943	1.70	50.45	170.11	0.78
1	106	1:100	55.17	1476.80	1477.33		1477.40	0.016949	1.65	50.79	159.39	0.74
1	105	1:100	55.17	1476.41	1476.97		1477.05	0.017283	1.72	49.21	152.14	0.75
1	104	1:100	55.17	1476.11	1476.59		1476.68	0.021933	1.81	46.60	156.57	0.84
1	103	1:100	55.17	1475.71	1476.18		1476.25	0.018555	1.51	51.79	180.45	0.75
1	102	1:100	55.17	1475.37	1475.77		1475.83	0.023421	1.47	50.25	195.42	0.81
1	101	1:100	55.17	1474.98	1475.35	1475.27	1475.41	0.019011	1.25	54.66	204.49	0.72

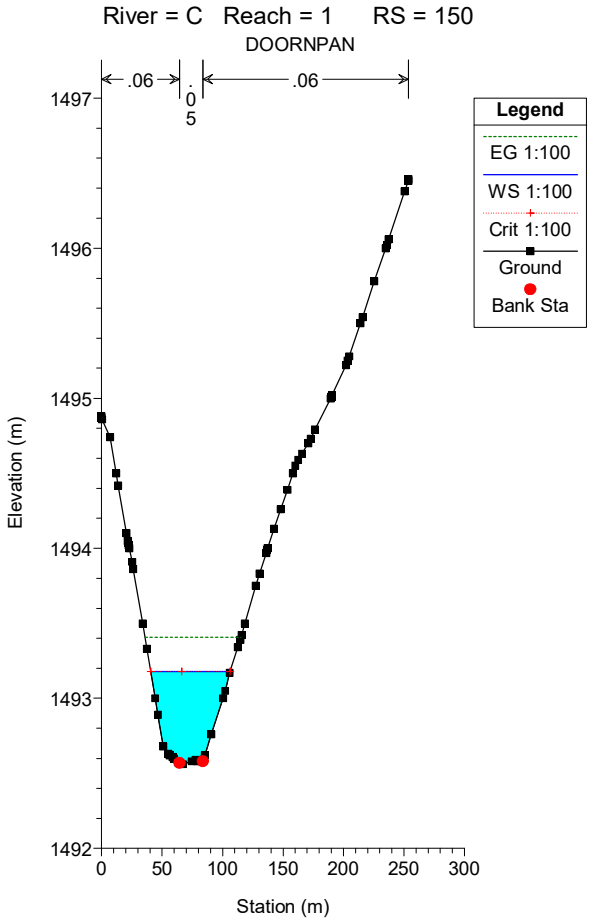
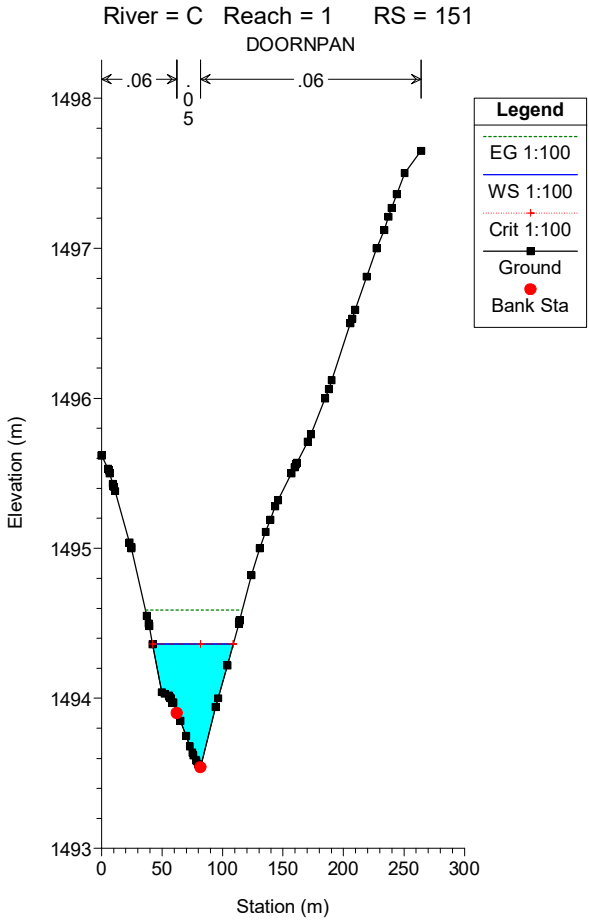
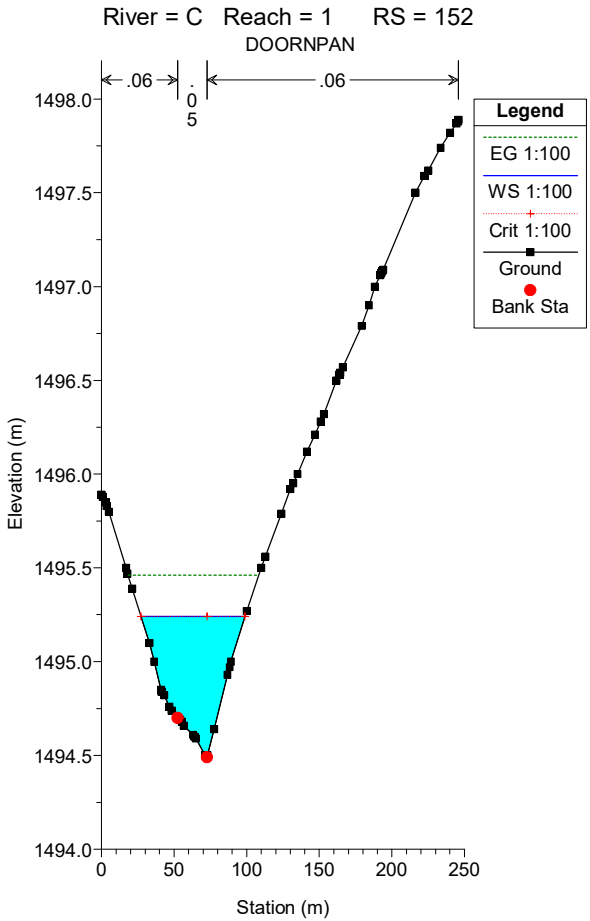
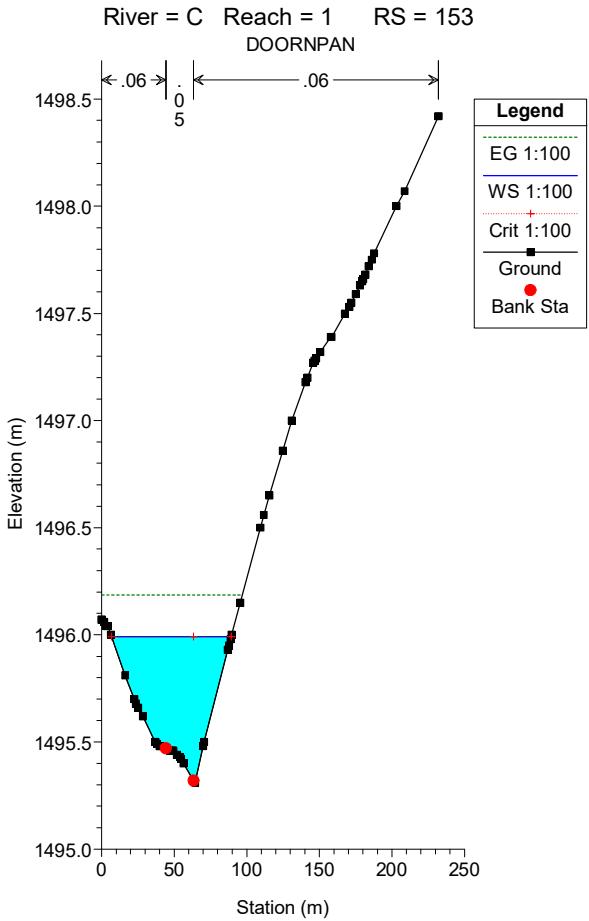
## ANNEXURE 4: LONGITUDINAL FLOW PROFILE FOR THE FLOOD PEAK

DOORNIPAN

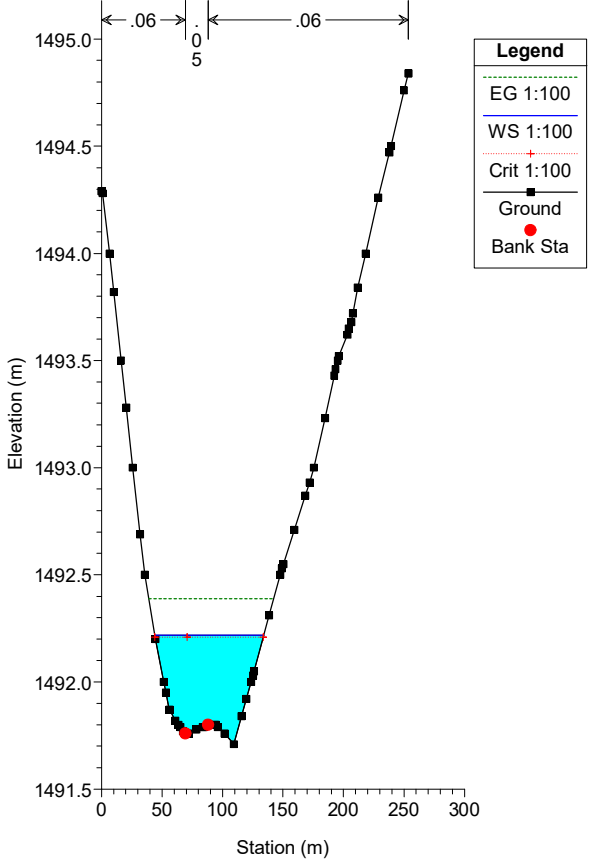


Legend	
EG 1:100	(Dotted green line)
WS 1:100	(Solid blue line)
Crit 1:100	(Dashed red line)
Ground	(Black line with square markers)

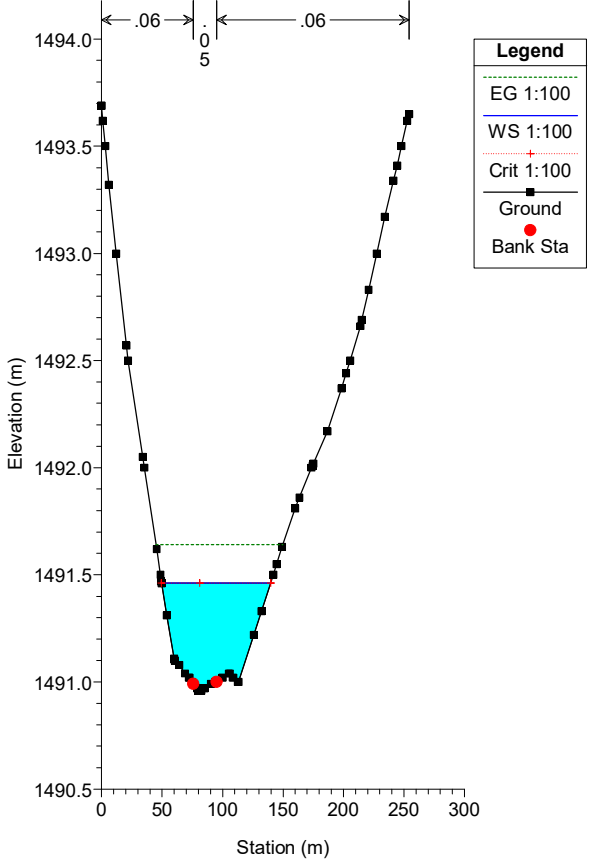
## ANNEXURE 5: FLOW CROSS SECTIONS FOR THE FLOOD PEAK



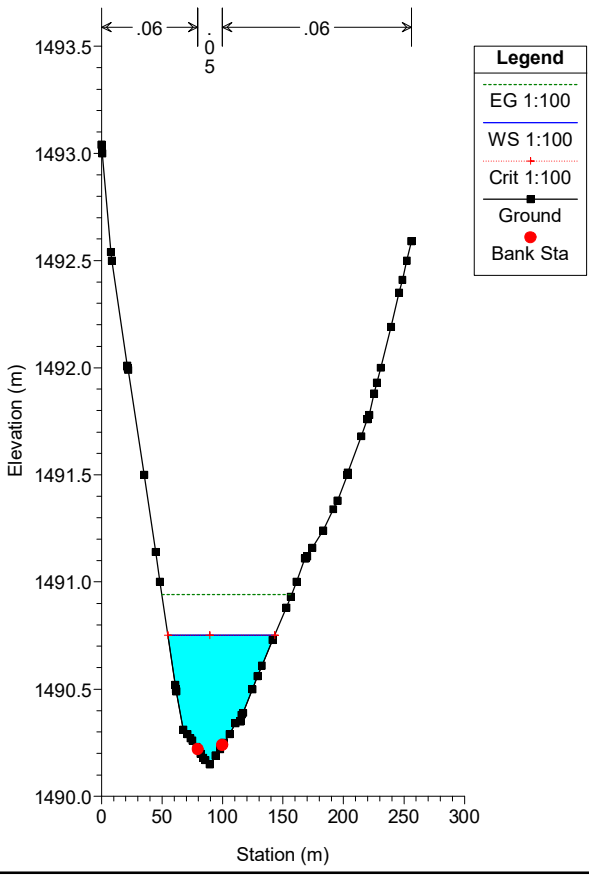
River = C Reach = 1 RS = 149  
DOORNPAN



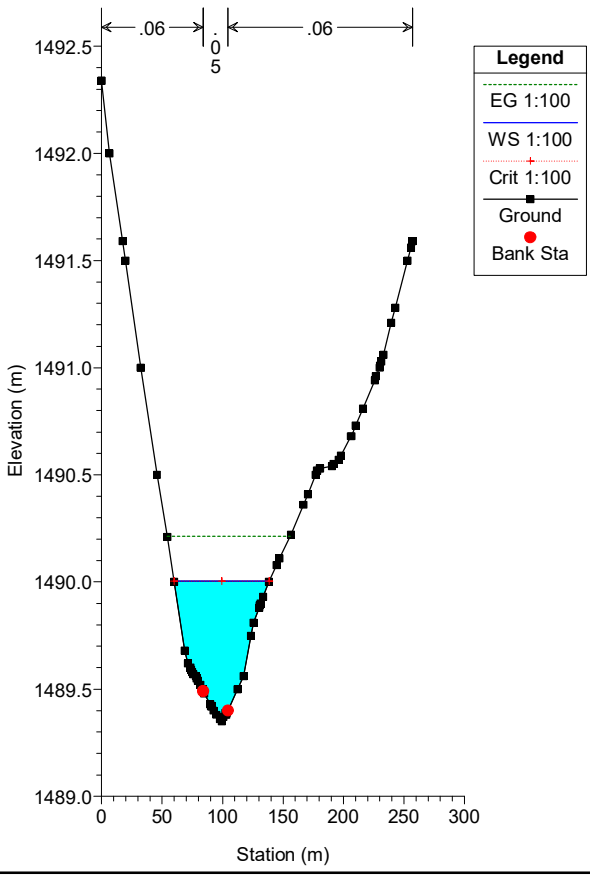
River = C Reach = 1 RS = 148  
DOORNPAN



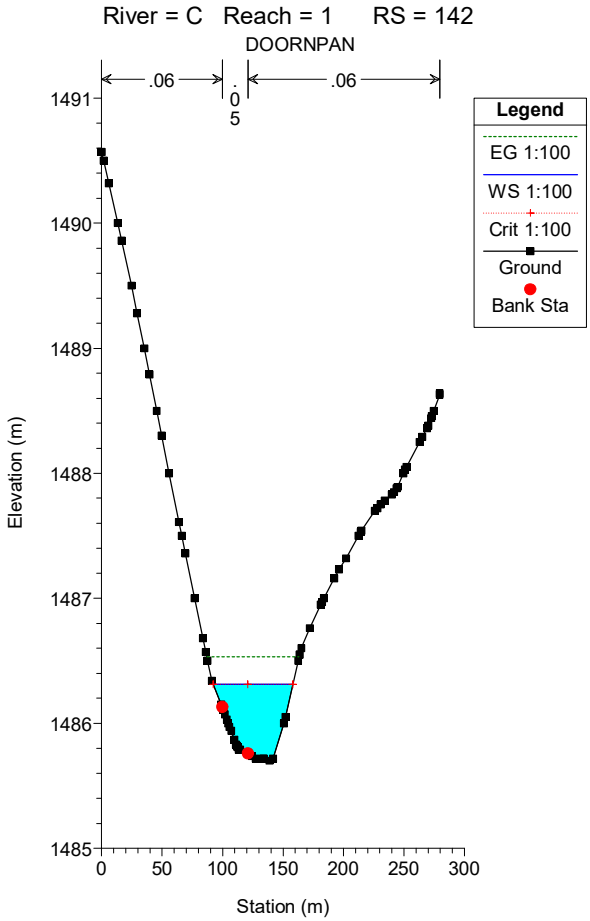
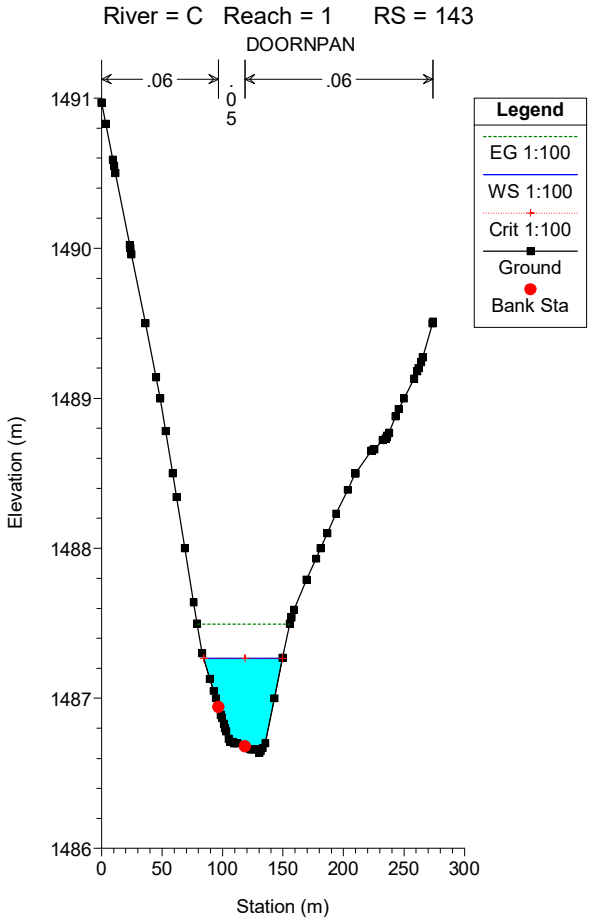
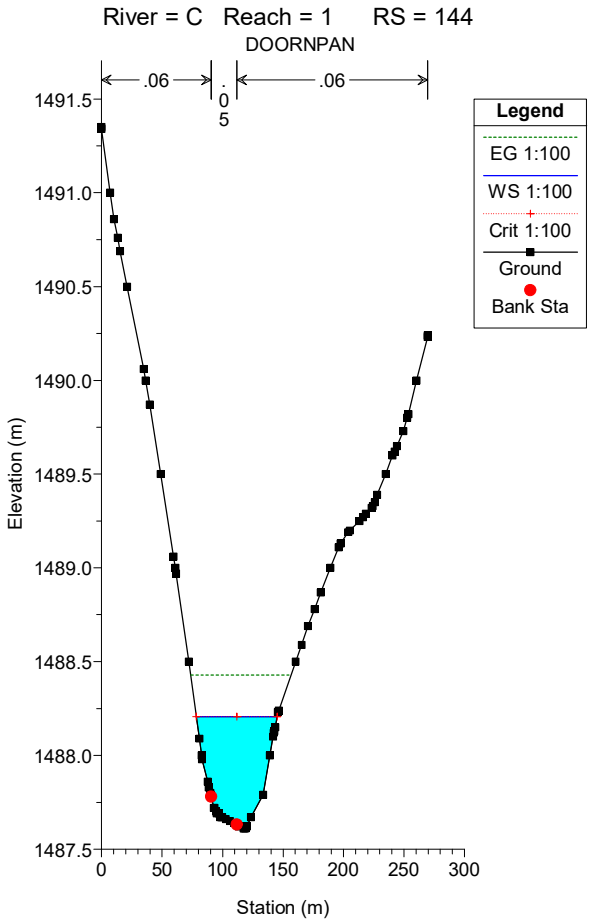
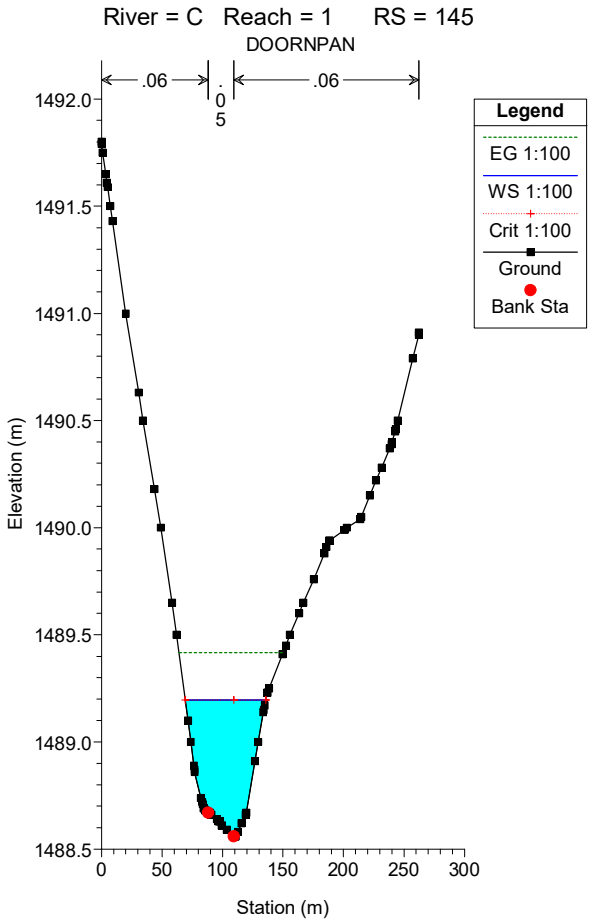
River = C Reach = 1 RS = 147  
DOORNPAN



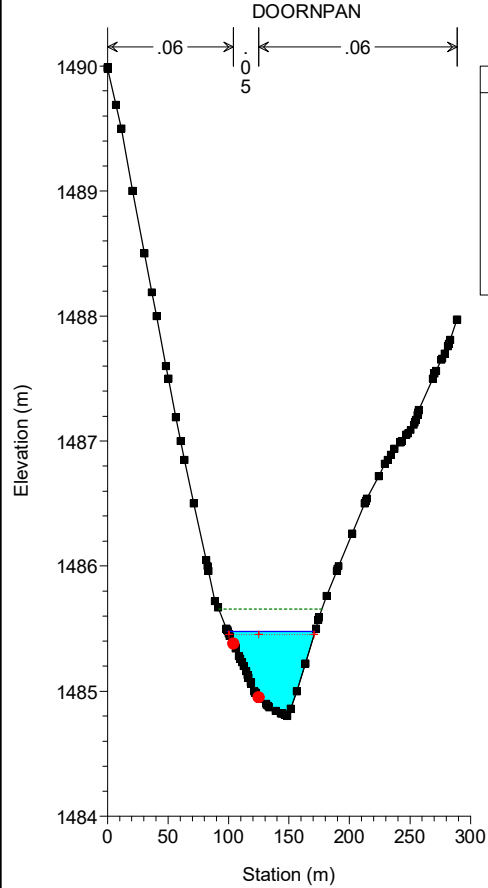
River = C Reach = 1 RS = 146  
DOORNPAN



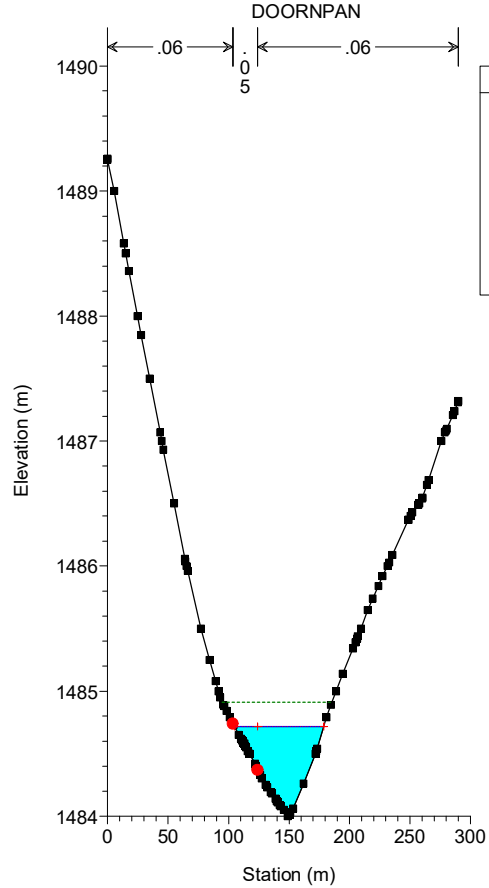




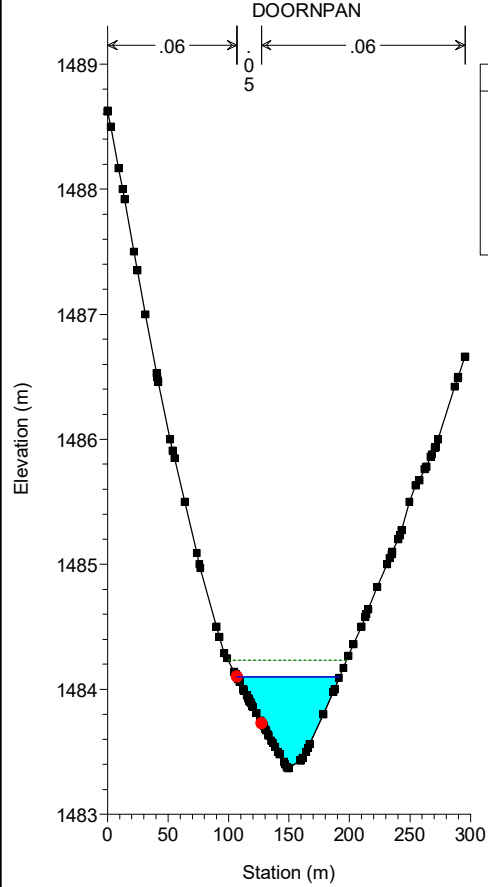
River = C Reach = 1 RS = 141



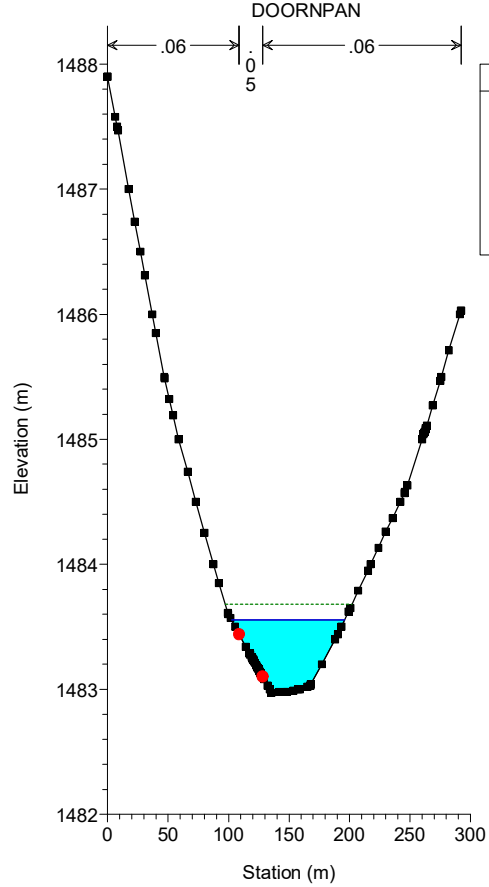
River = C Reach = 1 RS = 140

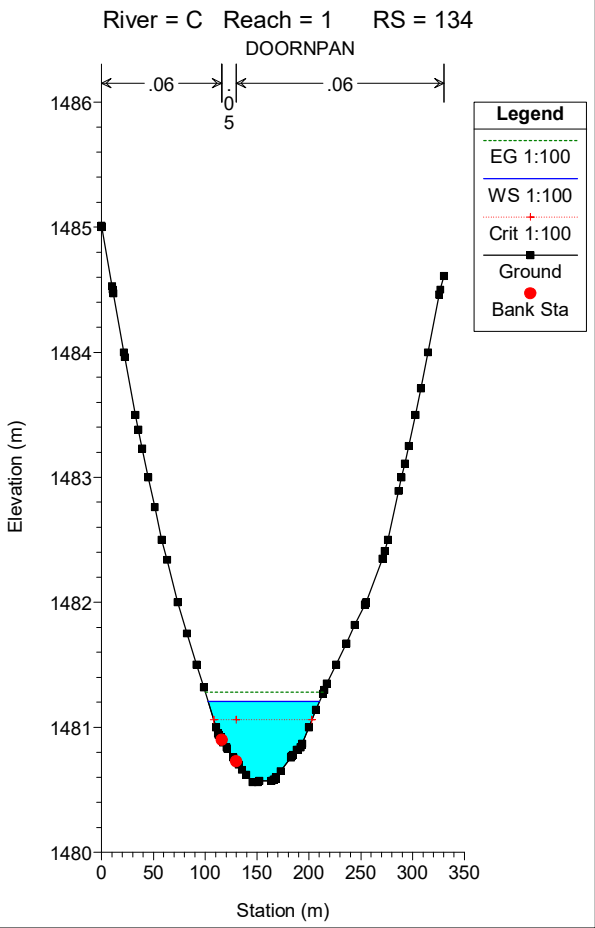
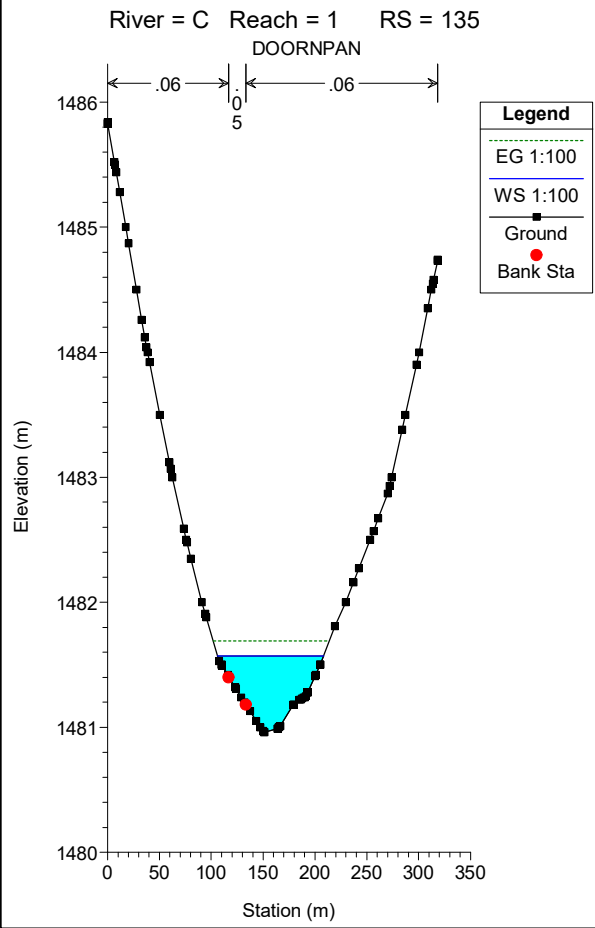
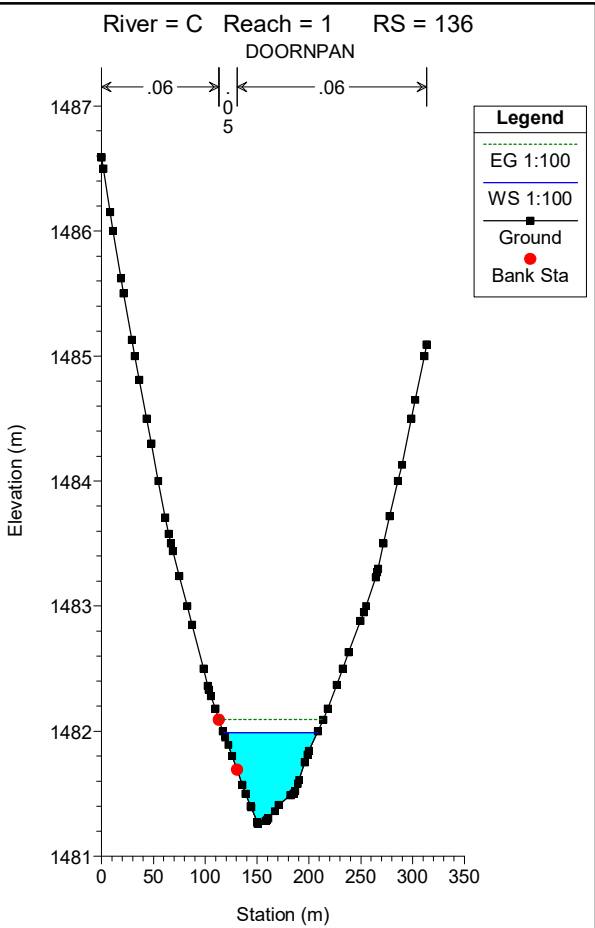
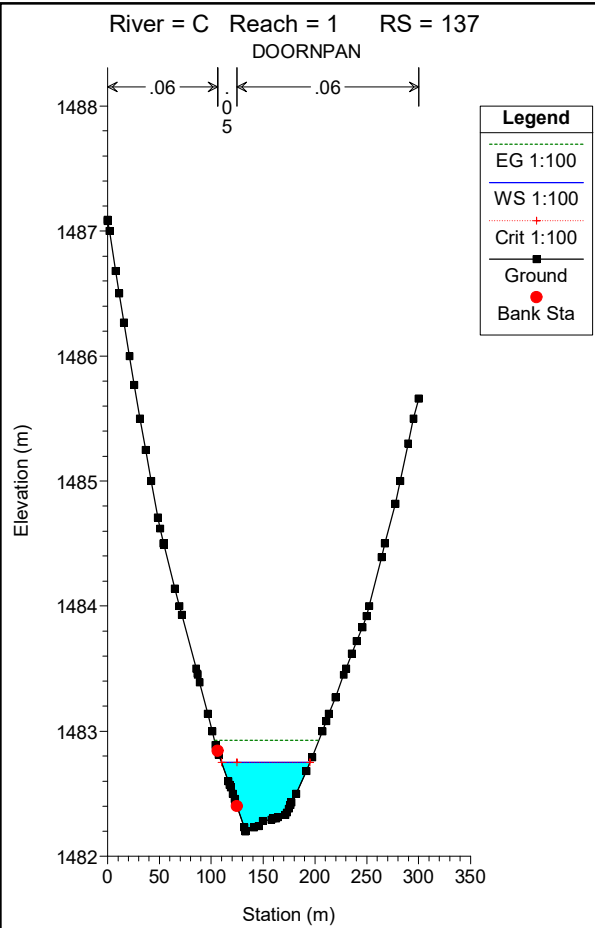


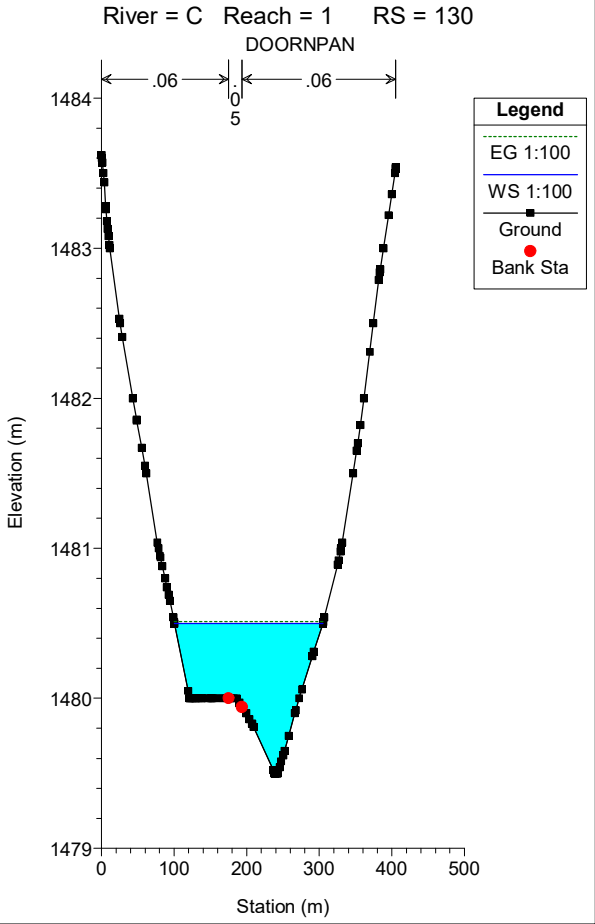
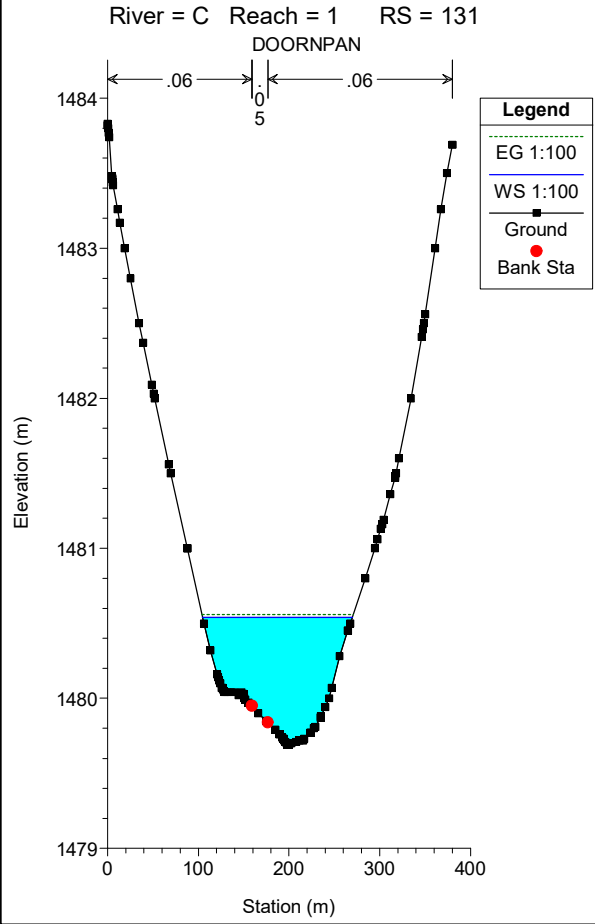
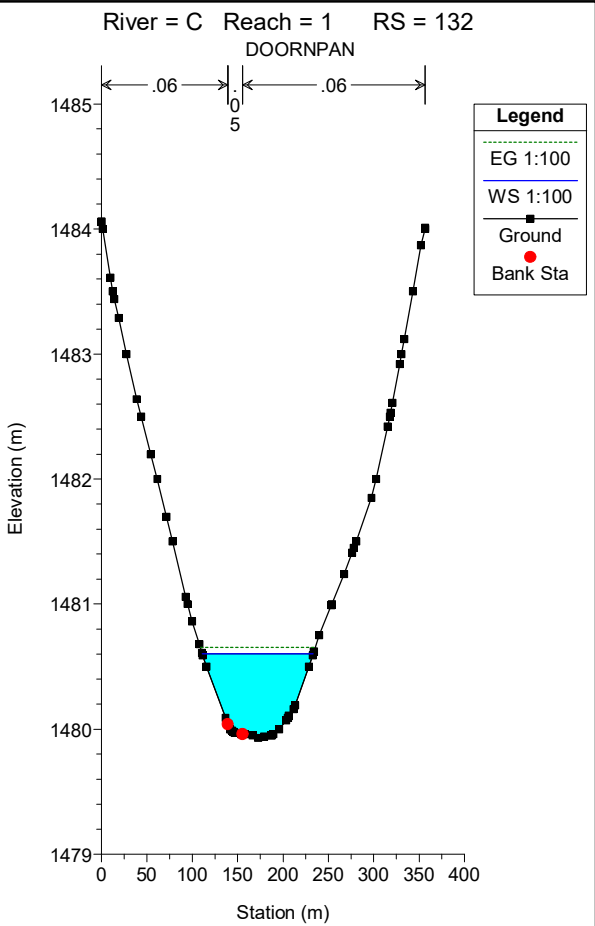
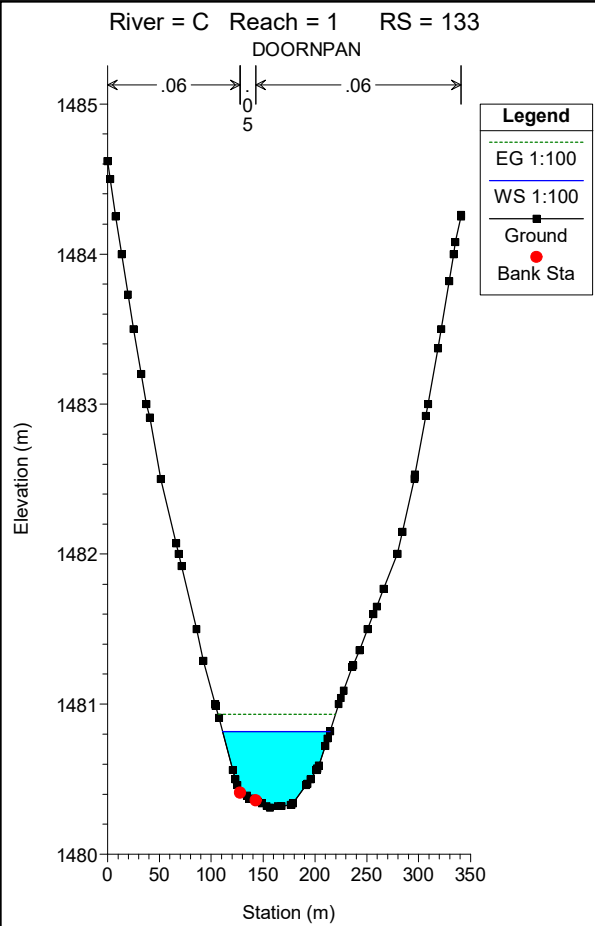
River = C Reach = 1 RS = 139

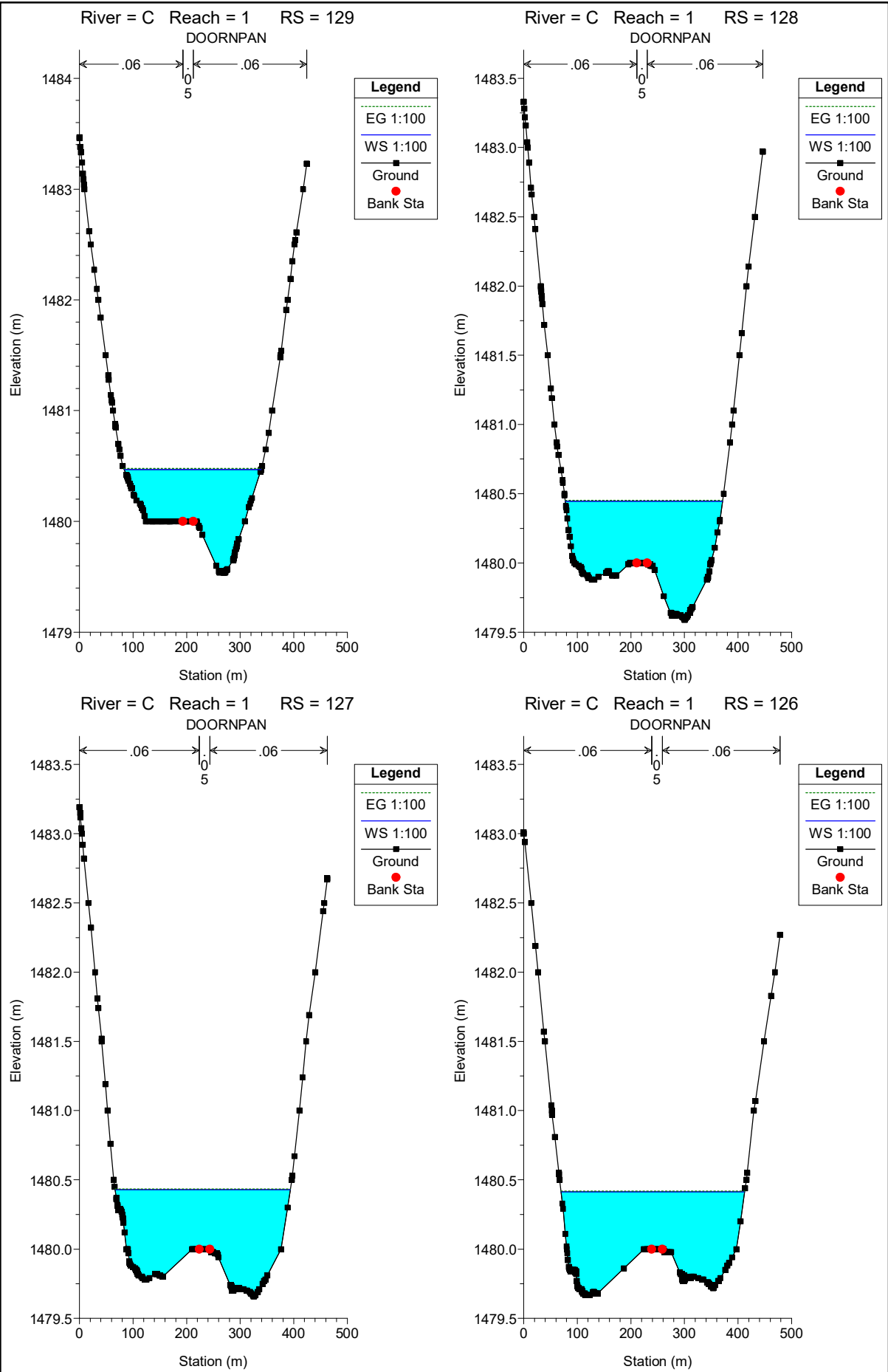


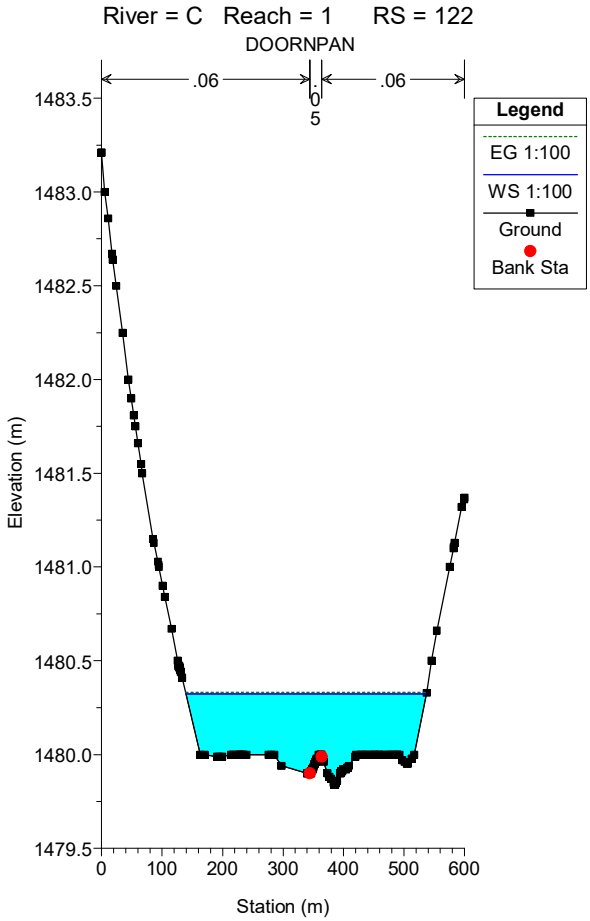
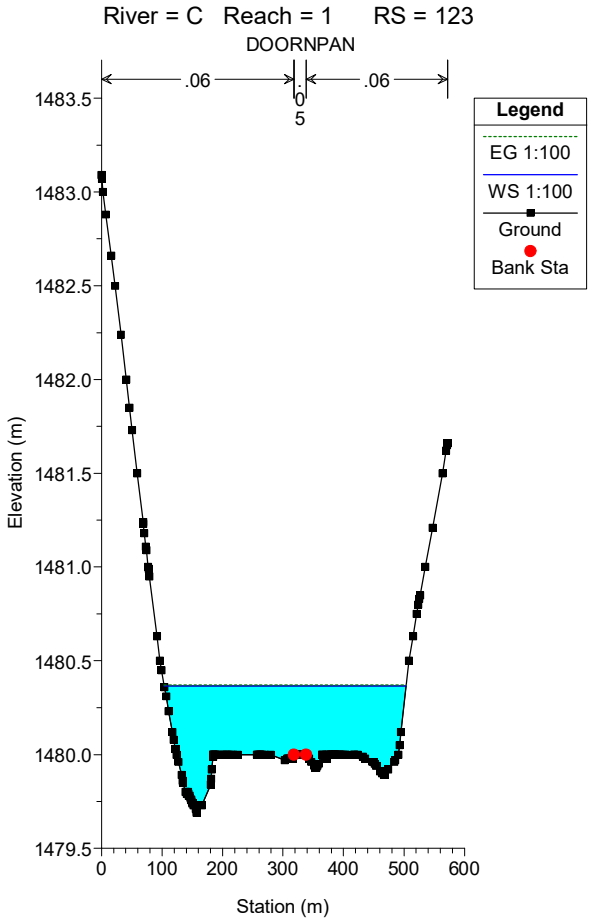
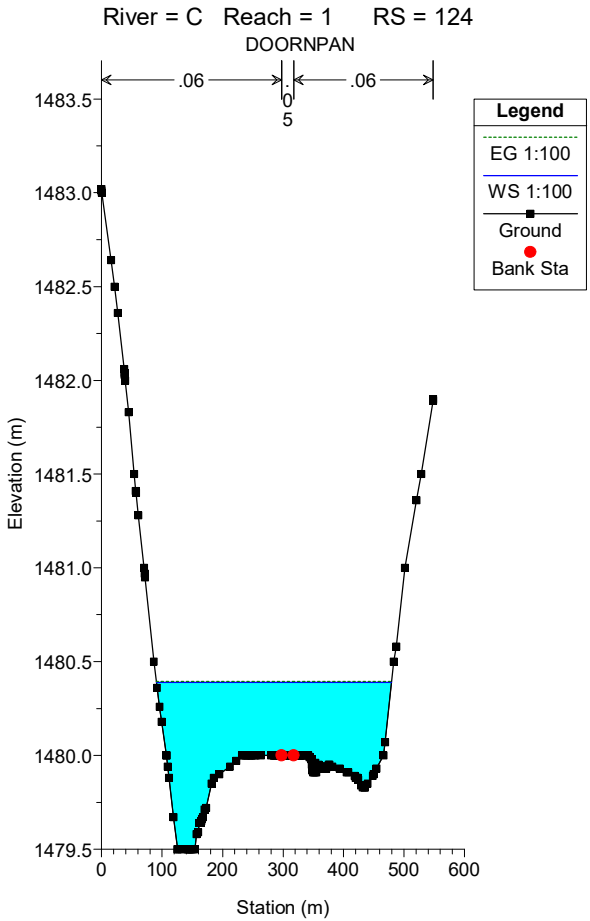
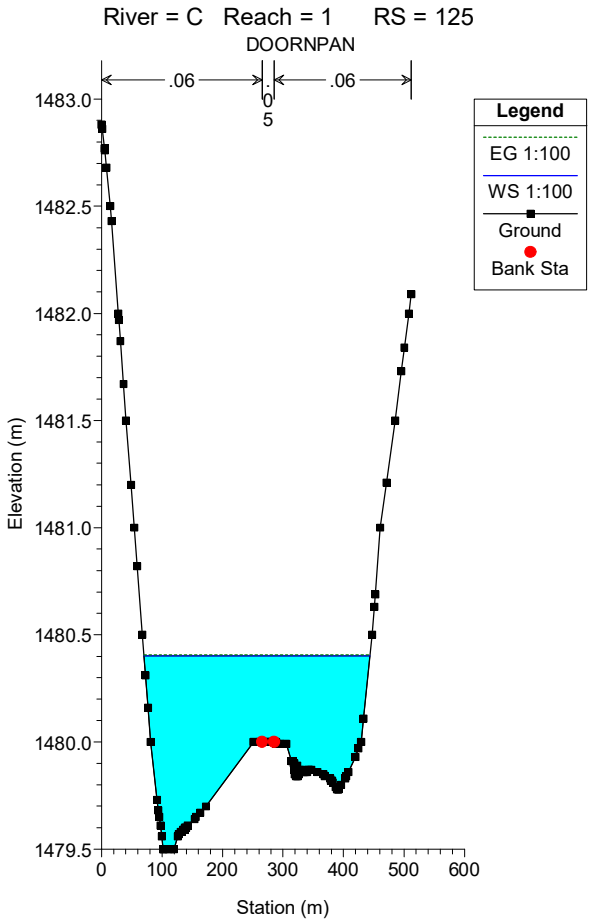
River = C Reach = 1 RS = 138

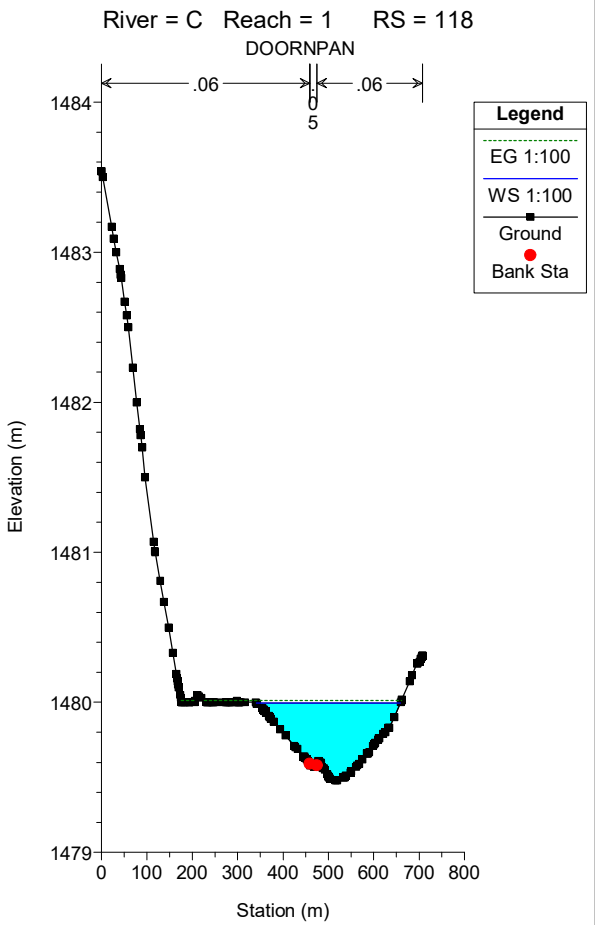
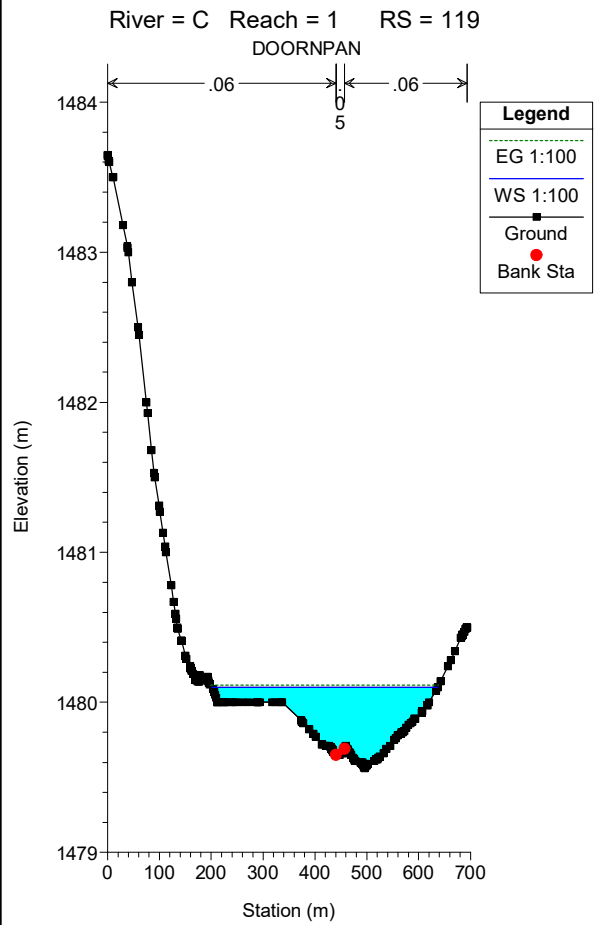
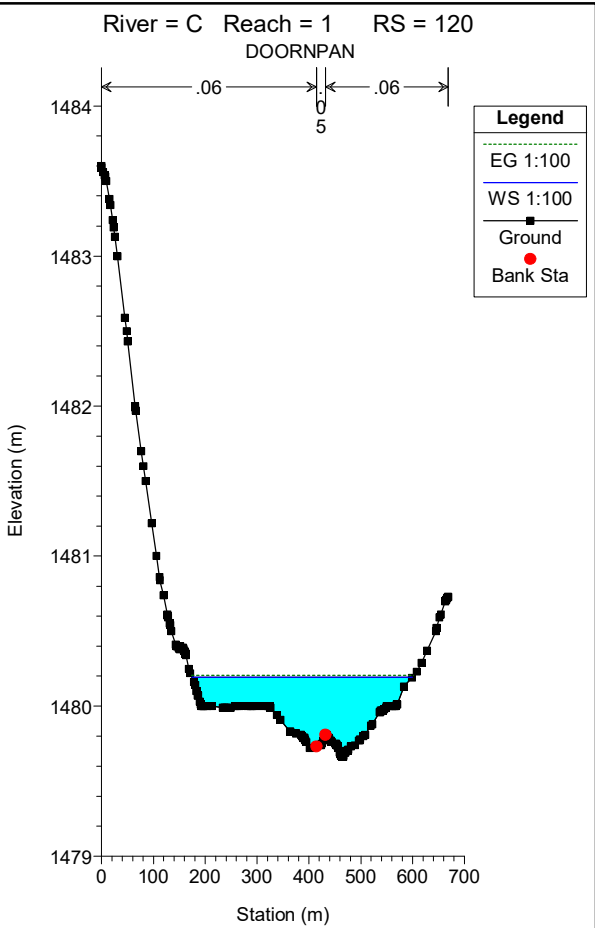
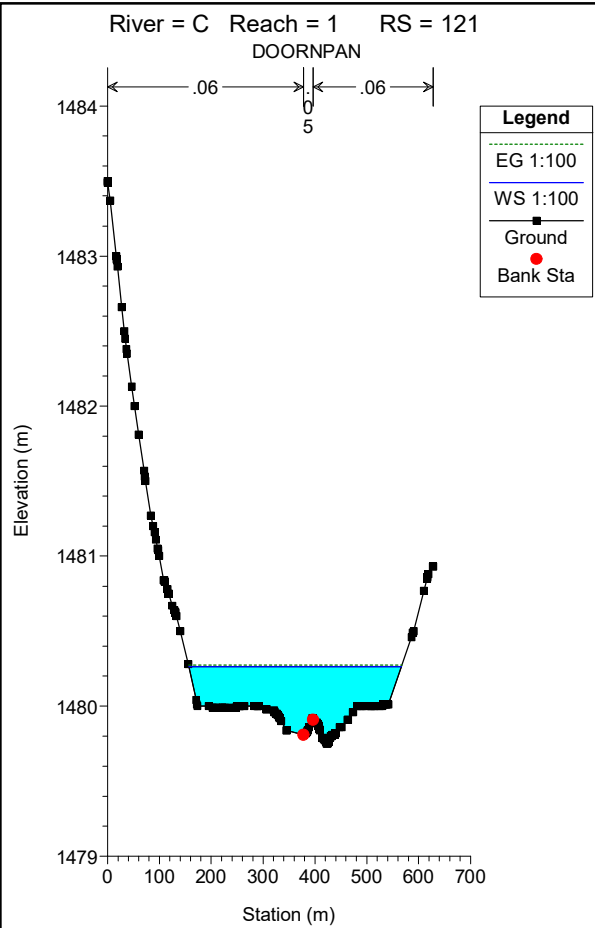


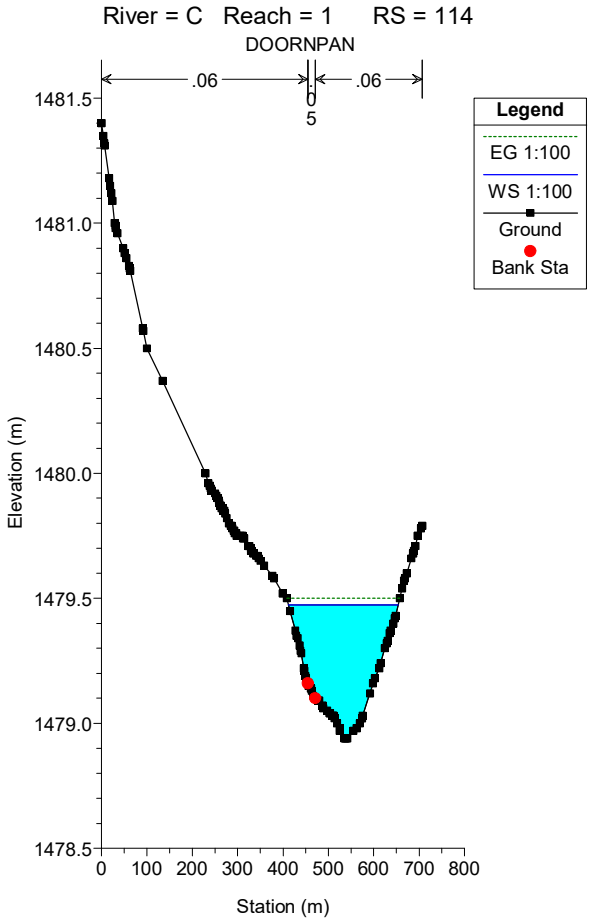
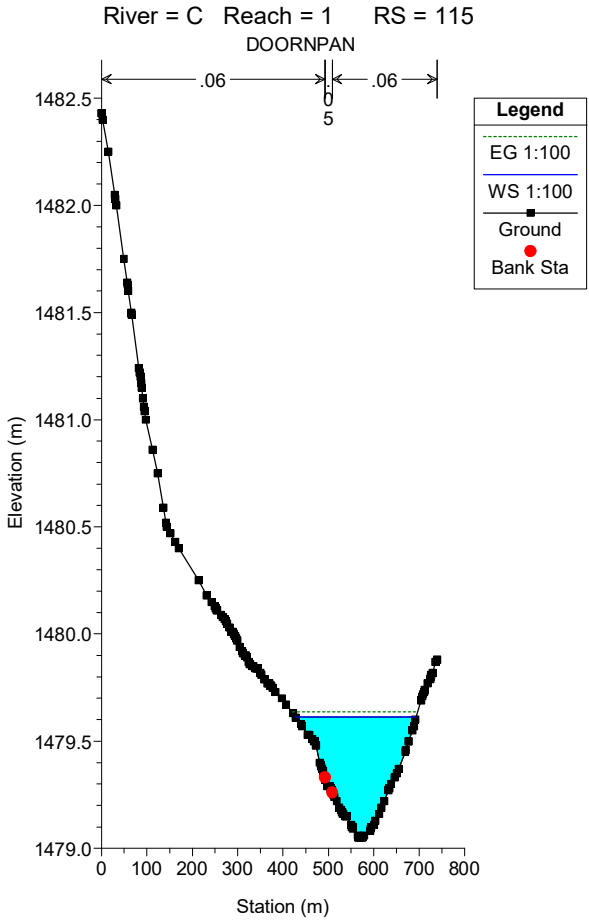
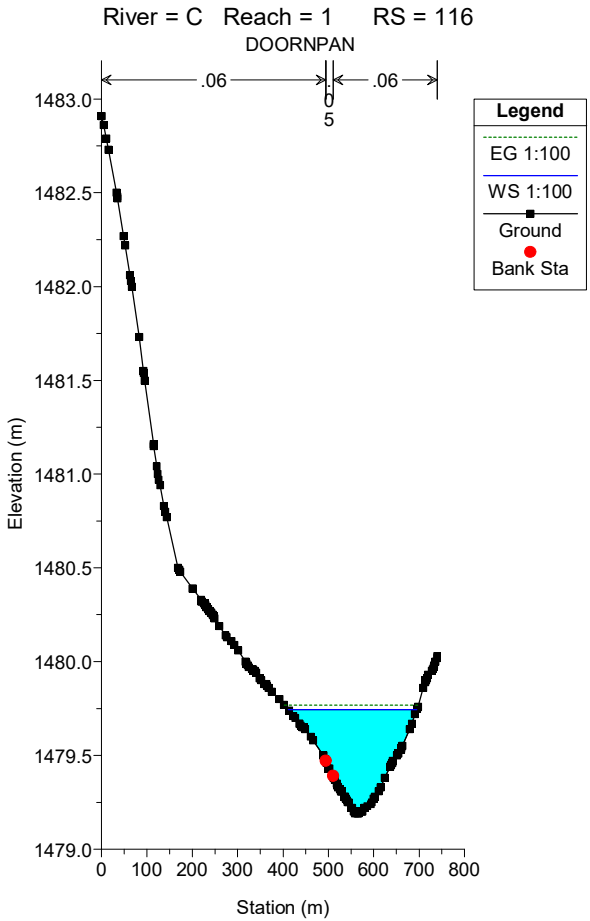
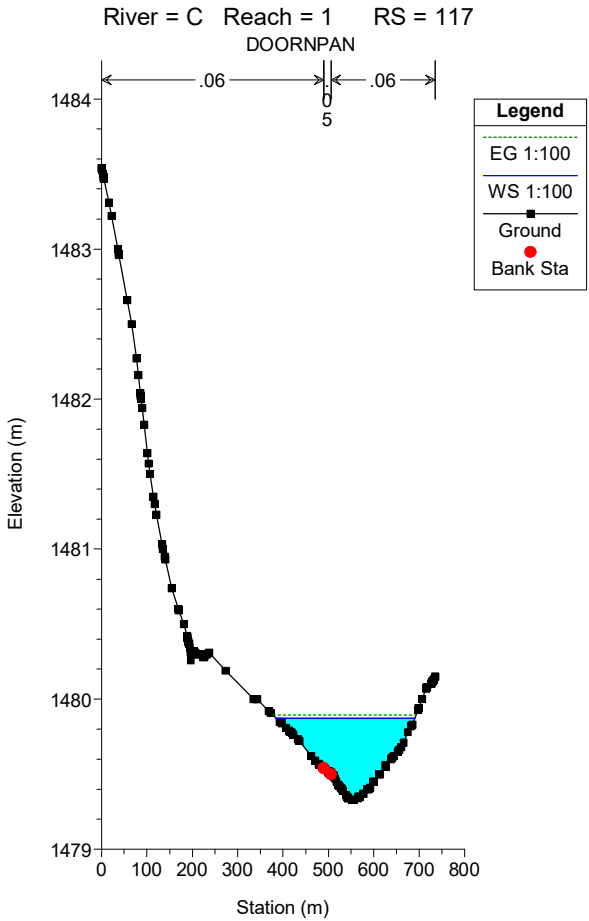






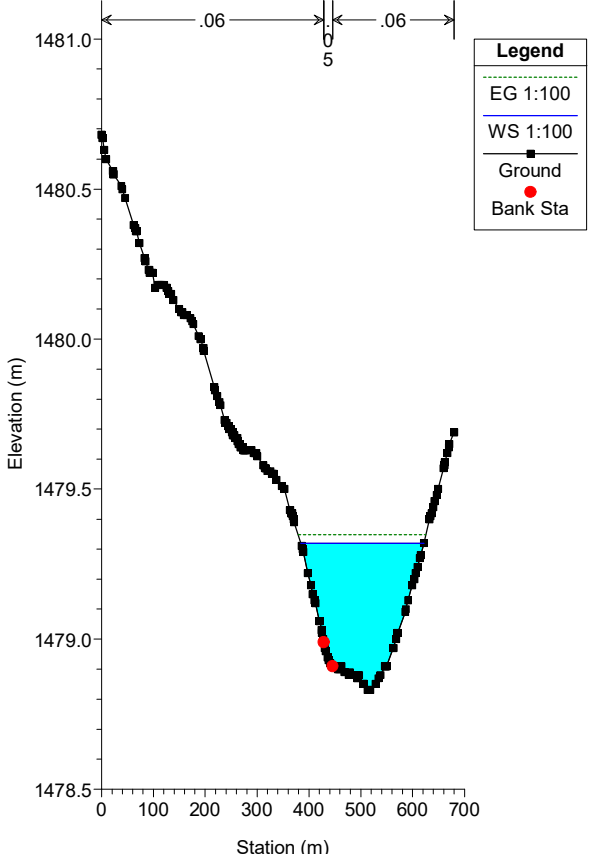




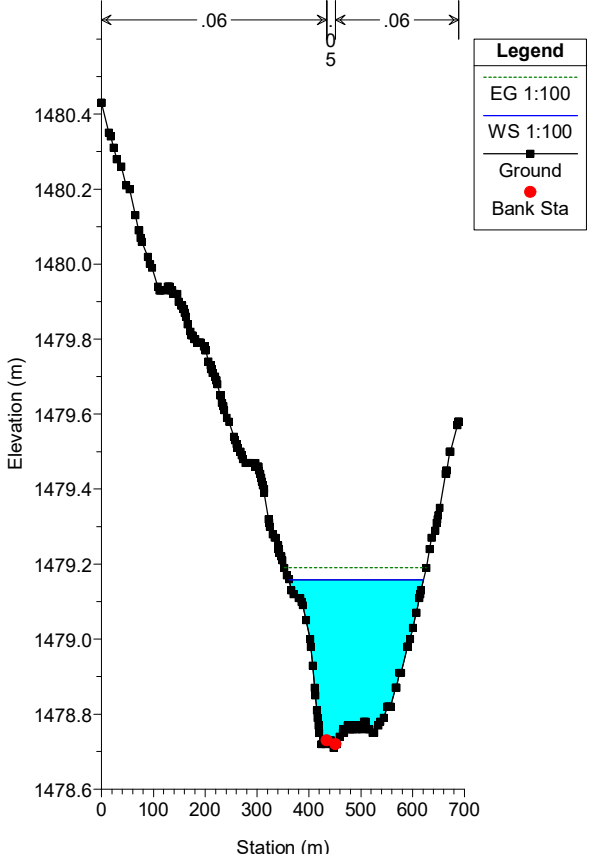




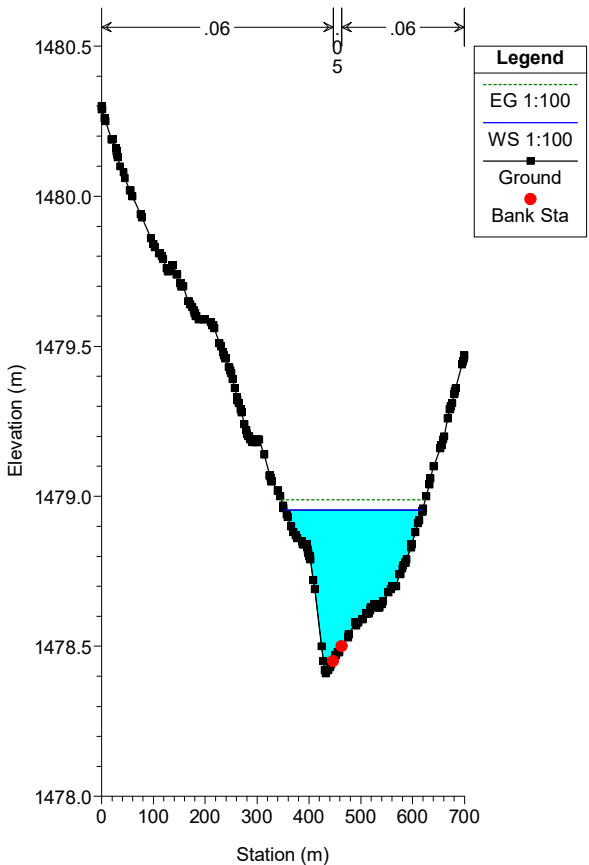
River = C Reach = 1 RS = 113  
DOORNPAN



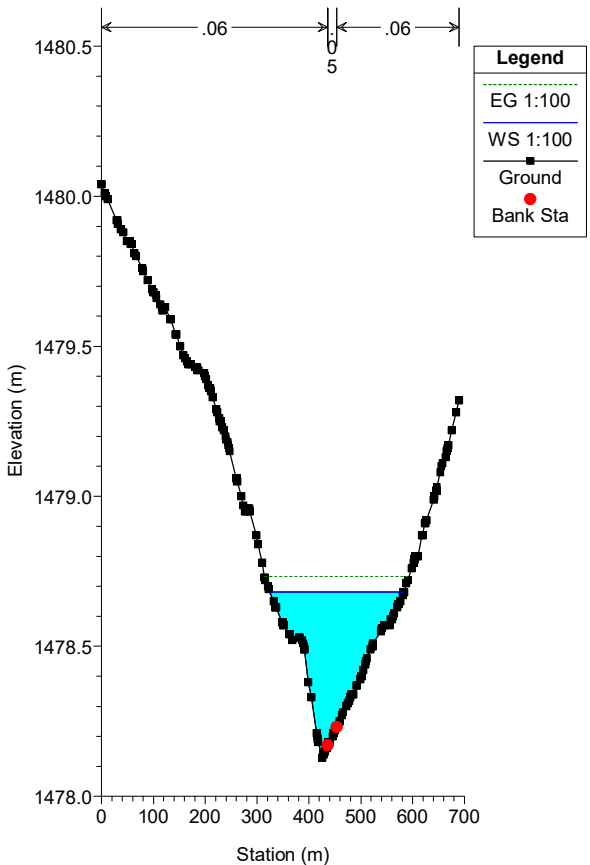
River = C Reach = 1 RS = 112  
DOORNPAN

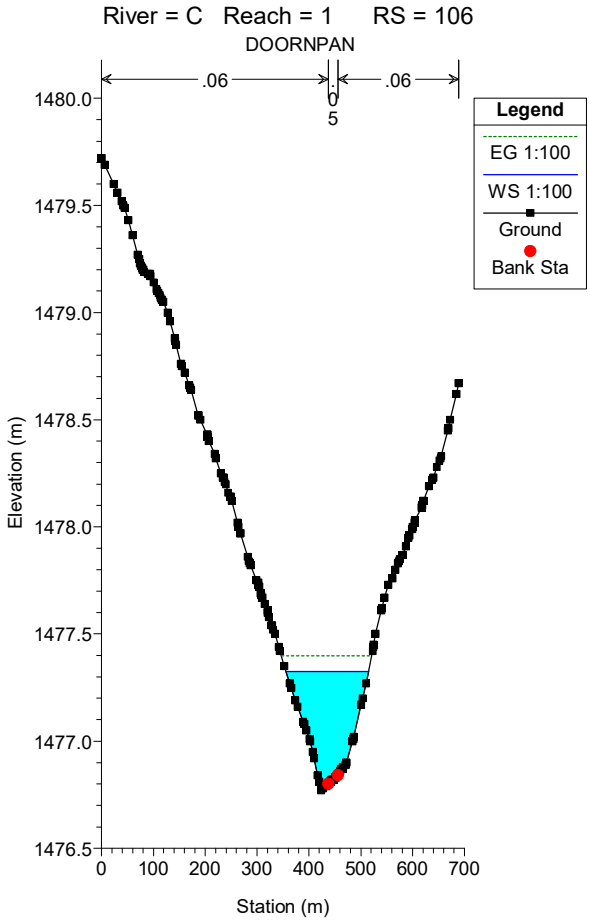
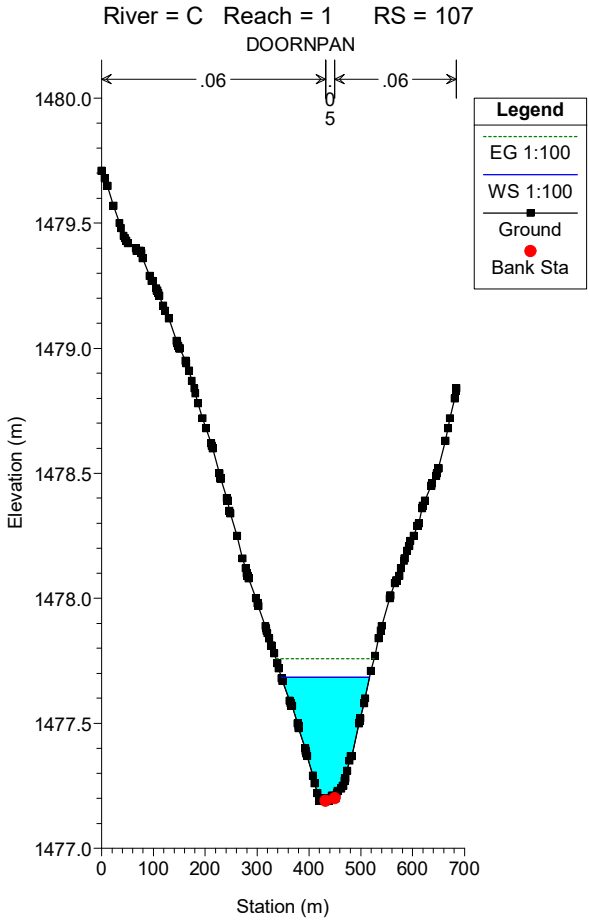
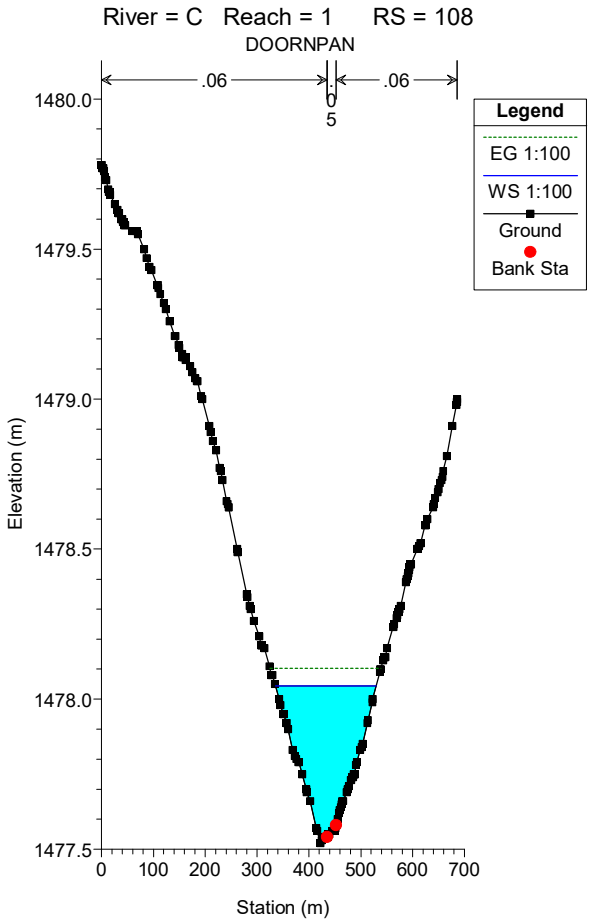
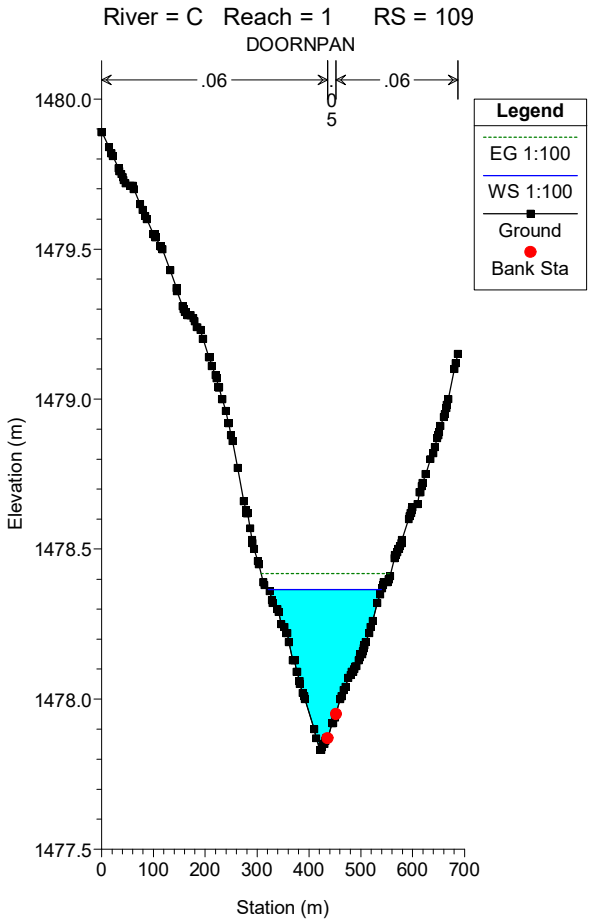


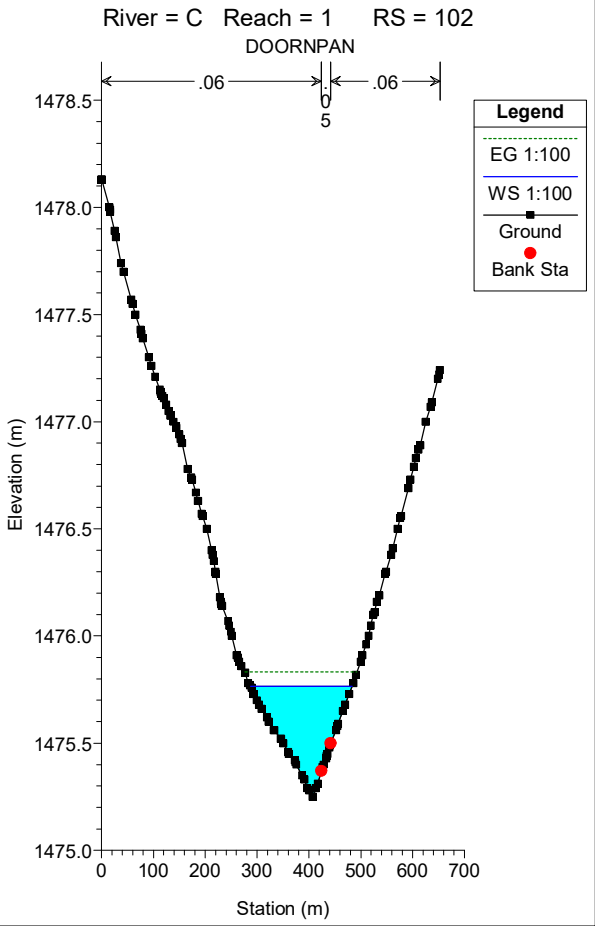
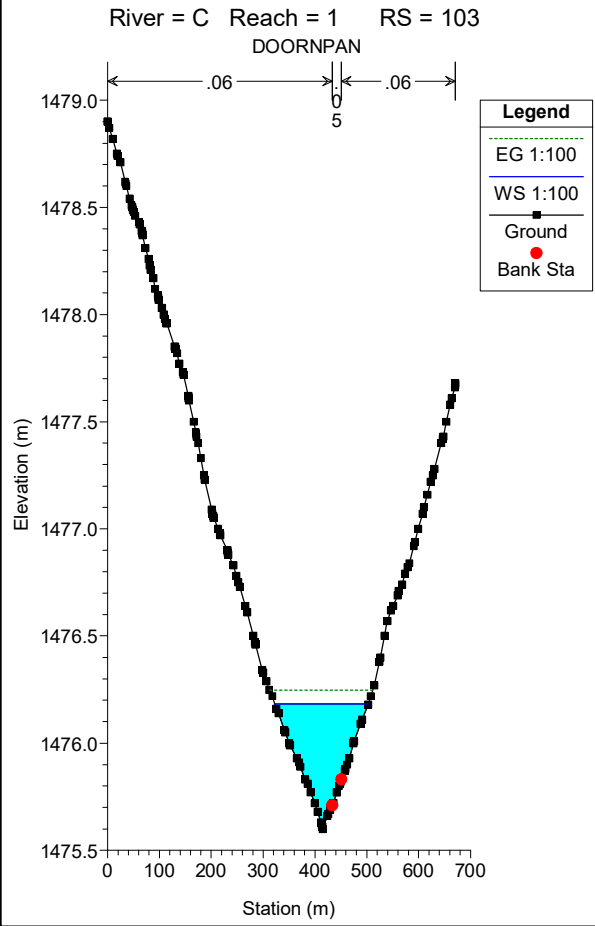
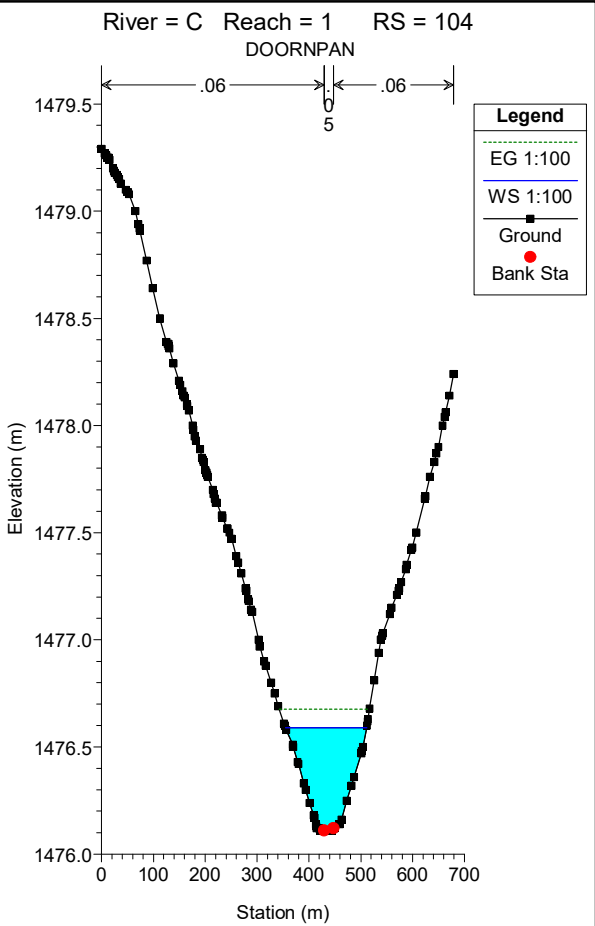
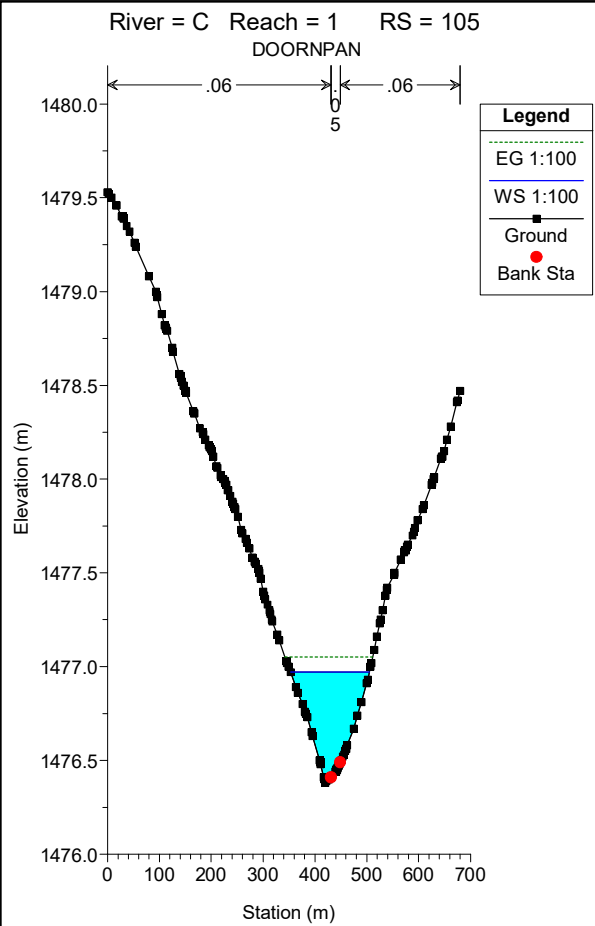
River = C Reach = 1 RS = 111  
DOORNPAN



River = C Reach = 1 RS = 110  
DOORNPAN







River = C Reach = 1 RS = 101

DOORNPAN

