

APPENDIX C3
SITE NOTICES AND NEWSPAPER
ADVERTISEMENTS

SITE NOTICES

NOTICE OF BASIC ASSESSMENT PROCESS PUBLIC PARTICIPATION PROCESS

FRONTEER WIND FARM, EASTERN CAPE PROVINCE

Project Name: Fronteer Wind Farm, Eastern Cape Province

Applicant: Fronteer (Pty) Ltd

Proposed Activity: The development of a wind farm with a contracted capacity of up to 213MW which will include up to 38 wind turbines and associated infrastructure including an on-site switching station, collector substation, 132kV power line, access roads (gravel in nature), concrete foundations and hardstands, laydown areas, cabling to be laid underground where practical, temporary concrete batching plant, staff accommodation, and operation and maintenance buildings.

Location: The project site is located between Somerset East and Makhanda, approximately 11km north-west of Makhanda, within the Makana Local Municipality and the Sarah Baartman District Municipality in the Eastern Cape Province. The site falls within Focus Area 3 of the Renewable Energy Development Zones (REDZ), which is known as the Cookhouse REDZ.

Eight (8) properties comprise the wind farm project site: Remainder of Farm Table Hill Farm No 187, Portion 2 of Table Hill Farm No 187, Portion 3 of the Farm Table Hill Farm No 187, Remainder of the Farm Hounshow No 131, Portion 1 of Farm Draai Farm No 184, Portion 1 of Farm No 132, Portion 1 of Farm Burnt Kraal No 189, Portion 1 of Farm Table Hill No 187.

Basic Assessment Process: In terms of Sections 24 and 24D of the National Environmental Management Act (No 107 of 1998), as read with Government Notice R324 – R327, as amended, Environmental Authorisation is required for the project. As the project site is located within a REDZ, a Basic Assessment (BA) process is required to be undertaken in accordance with GNR114 (February 2018). Savannah Environmental is undertaking the required environmental assessment and public participation process.

To obtain further information and register on the project database, please submit your name, contact information and interest in the project to:

Nicolene Venter of Savannah Environmental

P.O. Box 148, Sunninghill, 2157

Tel: 011 656 3237

Mobile: 060 978 8396

Fax: 086 684 0547

Email: publicprocess@savannahsa.com

Website: www.savannahsa.com



November 2020

KENNISGEWING VAN 'N BASIESE EVALUERINGSPROSES OPENBARE DEELNAMEPROSES

FRONTEER WINDPLAAS, OOS-KAAPROVINSIE

Projeknaam: Fronteer Windplaas, Oos-Kaapprovinsie

Applikant: Fronteer (Edms.) Bpk.

Beoogde aktiwiteit: Die ontwikkeling van 'n windplaas met 'n gekontrakteerde vermoë van hoogstens 213 MW, wat tot 38 windturbines en verwante infrastruktuur sal insluit, met insluiting van 'n interne skakelstasie, kollektorsubstasie, 132 kV kraglyn, toegangspaaie (gruis van aard), betonfondasies en vasteblaaie, stapelwerfgebiede, kables wat ondergronds gelê moet word waar prakties moontlik, tydelike betonlotaanleg, personeelverblyf en bedryfs- en instandhoudingsgeboue.

Ligging: Die projekterrein is geleë tussen Somerset-Oos en Makhanda, sowat 11 km noordwes van Makhanda in die Makana Plaaslike Munisipaliteit en die Sarah Baartman Distriksmunisipaliteit in die Oos-Kaapprovinsie. Die terrein is in Fokusgebied 3 van die Hernubare Kragontwikkelingsones (REDZ), wat bekendstaan as die Cookhouse REDZ.

Die windplaasprojek beslaan agt (8) eiendomme: Restant van die plaas Table Hill Farm No. 187, Gedeelte 2 van Table Hill Farm No. 187, Gedeelte 3 van die plaas Table Hill Farm No. 187, Restant van die plaas Hounshow No. 131, Gedeelte 1 van die plaas Draai Farm No. 184, Gedeelte 1 van Plaasno. 132, Gedeelte 1 van die plaas Burnt Kraal No. 189, Gedeelte 1 van die plaas Table Hill No. 187.

Basiese Evalueringsproses: Ingevolge Artikel 24 en 24D van die Nasionale Wet op Omgewingsbestuur (Wet 107 van 1998), saamgelees met Staatskennisgewing R324 tot R327, soos gewysig, moet 'n Omgewingsmagtiging vir die projek onderneem word. Aangesien die projekterrein in 'n REDZ geleë is, moet 'n Basiese Evalueringsproses (BE) ingevolge Staatskennisgewing R114 (Februarie 2018) onderneem word. Savannah Environmental onderneem die vereiste omgewingsevaluering en openbare deelnameproses.

Ten einde meer inligting te bekom en om op die projek se databasis te registreer, verstrek asseblief u naam, kontakbesonderhede en belang by die projek aan:

Nicolene Venter van Savannah Environmental

Posbus 148, Sunninghill, 2157

Tel: 011 656 3237

Selfoon: 060 978 8396

Faks: 086 684 0547

E-pos: publicprocess@savannahsa.com

Webwerf: www.savannahsa.com



November 2020

PROOF OF SITE NOTICES (Date placed: Thursday, 03 December 2020)



Site Notice #1: Placed at the boundary fence of the farm Draai Farm, along the R344

Co-ordinates: 33°11'34.24"S & 26°25'3.01"E





Site Notice #2: Placed at the boundary fence of the farm Draai Farm, along the R344 and R67 (Krantzdrift) gravel road

Co-ordinates: 33°11'36.30"S & 26°24'57.10"E

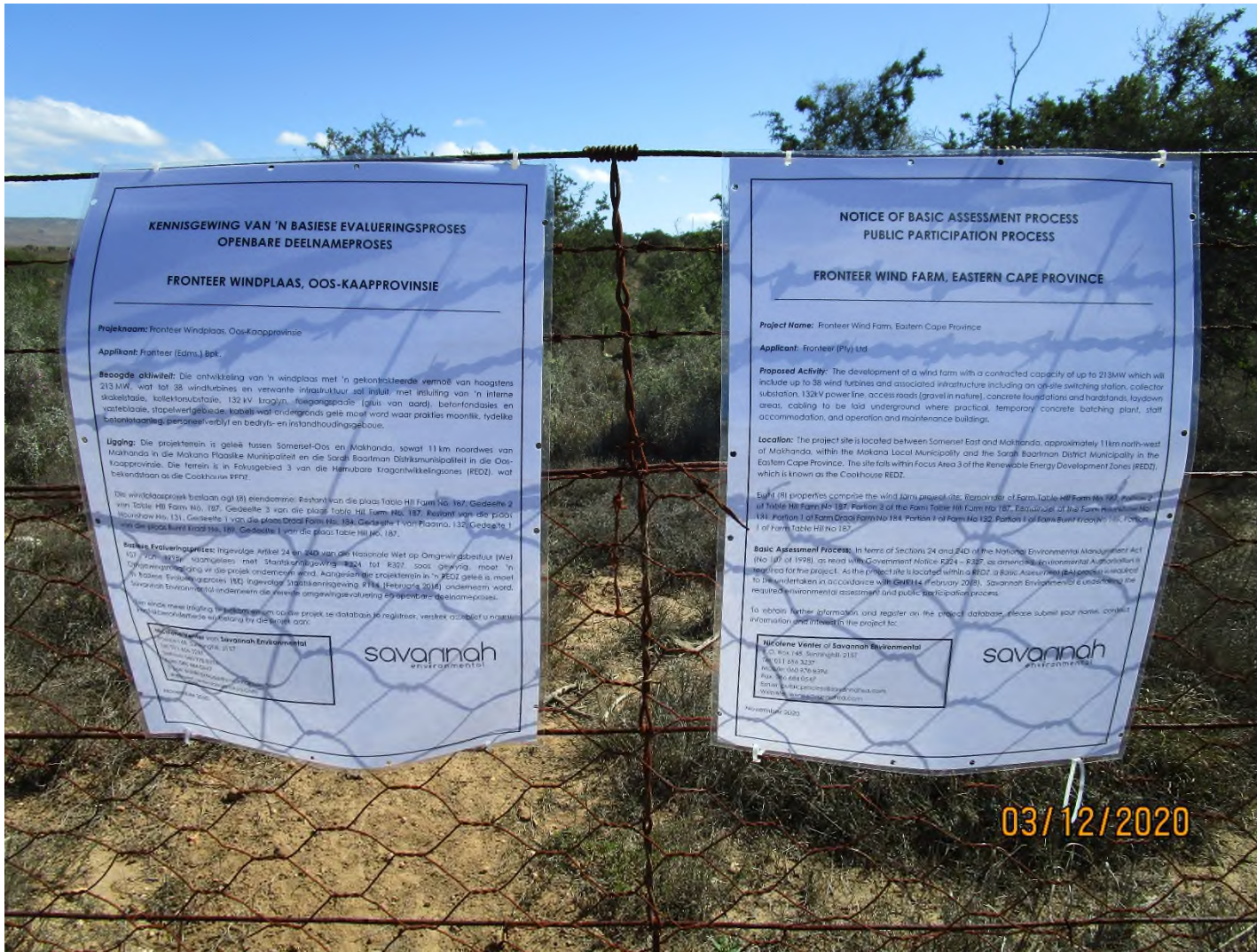




Site Notice #3: Placed at the boundary fence of the farm Table Hill, along the R350

Co-ordinates: 33°13'54.00"S & 26°24'32.90"E





Site Notice #4: Placed at the boundary fence of the farm Table Hill, Portion 1, along the R350

Co-ordinates: 33°14'6.30"S & 26°25'0.30"E





Site Notice #5: Placed at the boundary fence of the farm Table Hill, Portion 2, along the R350

Co-ordinates: 33°14'32.30"S / 26°25'23.20"E





Site Notice #6 (North): Placed at the boundary fence of the farm Table Hill, Remaining Extent, along the R350

Co-ordinates: 33°15'13.59"S & 26°27'0.25"E





Site Notice #6(south): Placed at the boundary fence of the farm Table Hill, Remaining Extent (southern fence), along the R350

Co-ordinates: 33°15'13.91"S & 26°27'0.07"E





Site Notice #7: Placed at the boundary fence of Farm 692, along the R350

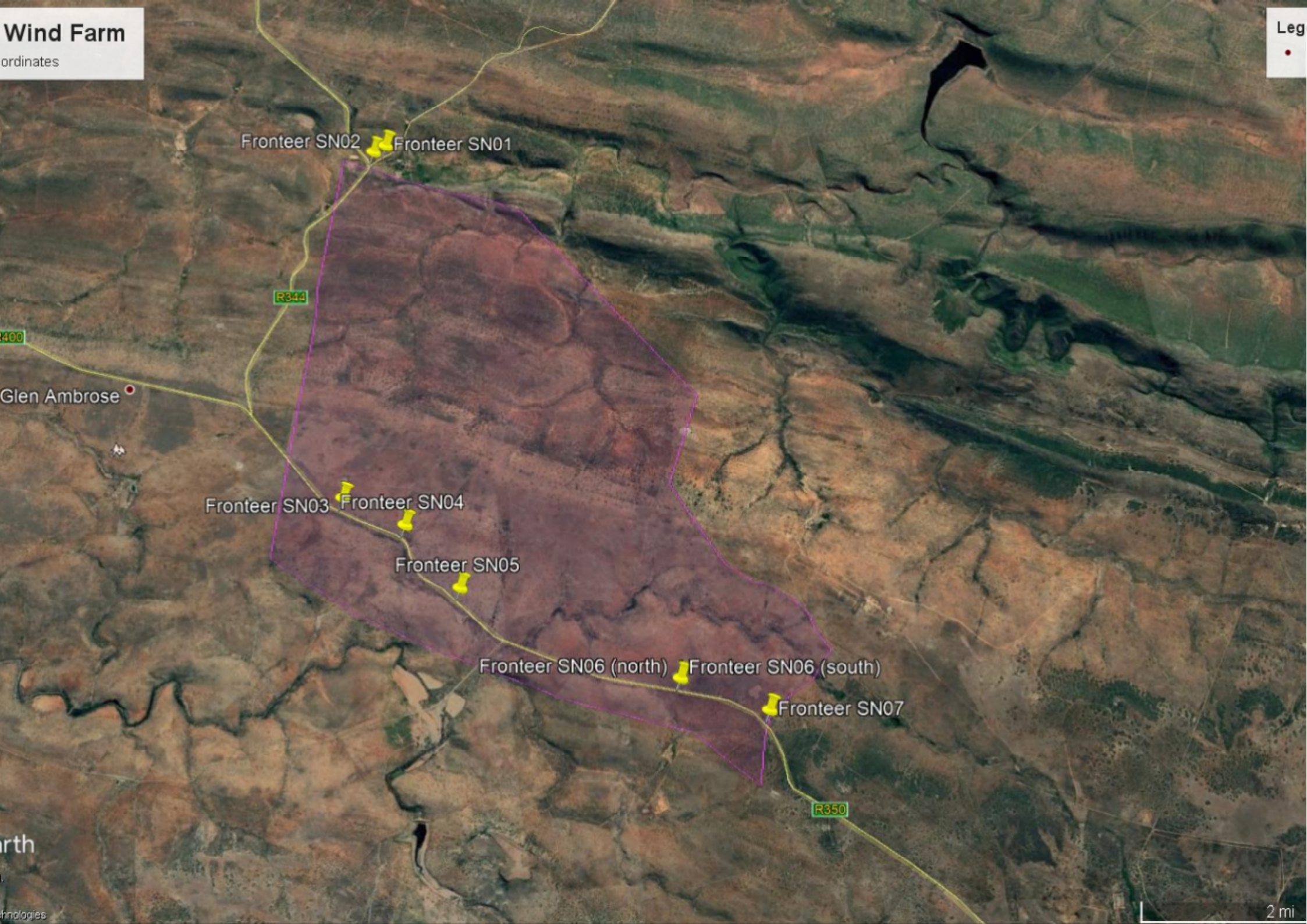
Co-ordinates: 33°15'28.73"S & 26°27'38.96"E



Wind Farm

Coordinates

Legend
•



PROCESS NOTICES

PROOF OF PROCESS NOTICES (Date placed: Thursday, 03 & Friday, 04 December 2020)

MAKHANDA LIBRARY





Ms Zodwa Nikaelo
Librarian

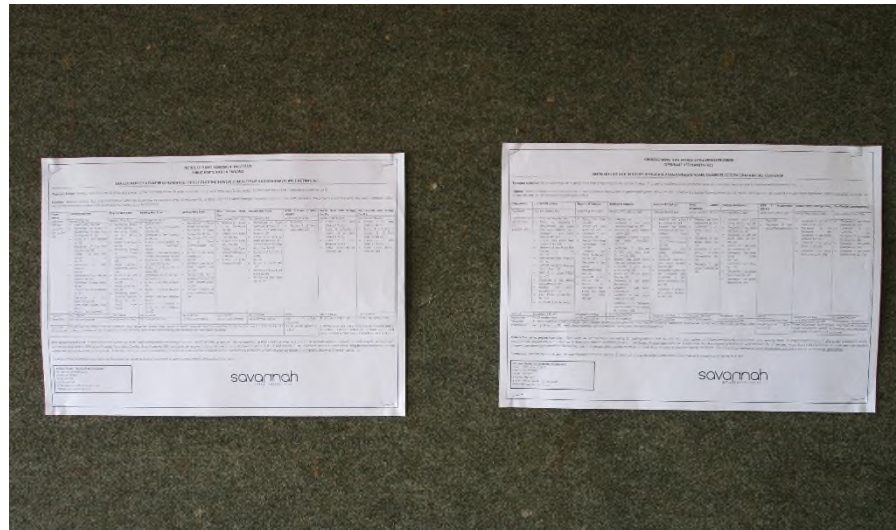




DUNA PUBLIC LIBRARY







EXTENSION 6 PUBLIC LIBRARY





NEWSPAPER ADVERTISEMENTS

**NOTICE OF BASIC ASSESSMENT PROCESSES
PUBLIC PARTICIPATION PROCESS**

DEVELOPMENT OF A CLUSTER OF RENEWABLE ENERGY FACILITIES BETWEEN SOMERSET EAST AND GRAHAMSTOWN, EASTERN CAPE

Proposed Activity: Development of a cluster of renewable energy facilities consisting of nine (9) projects, including six (6) wind farms, two (2) solar energy facilities and one (1) Main Transmission Substation (MTS).

Location: Between Somerset East and Grahamstown within the Cookhouse Renewable Energy Development Zone (REDZ) and the Eastern Strategic Transmission Corridor. The entire extent of the projects is located within the Sarah Baartman District Municipality and within the Blue Crane Route and the Makana Local Municipalities.

Project Name	Hamlett Wind Farm	Ripponn Wind Farm	Redding Wind Farm	Aeolus Wind Farm	Wind Garden Wind Farm	Fronteer Wind Farm	REDZ 3 Power Corridor 400MTS	Solaris Fields Solar Energy Facility	Sun Garden Solar Energy Facility
Applicant	Hamlett (Pty) Ltd	Ripponn (Pty) Ltd	Redding Wind (Pty) Ltd	Aeolus (Pty) Ltd	Wind Garden (Pty) Ltd	Fronteer (Pty) Ltd	Wind Relic (Pty) Ltd	Solaris Fields (Pty) Ltd	Sun Garden (Pty) Ltd
Affected properties (i.e. project site)	<ul style="list-style-type: none"> » Farm Vaalkop No 164 » Remainder of Portion 1 (Middlevale) of Farm Van Aardts Kraal No 163 » Portion 1 of Farm Jaskraal No 160 » Remainder of Farm Riet Fontein A No 159 » Portion 1 of Farm Riet Fontein A No 159 » Remainder of Farm Jaskraal No 160 » Remainder of Farm Nieuwe Grond A No 129 » Remainder of Farm Wilton No 409 » Portion 2 of Farm Middleton No 219 » Remainder of Farm Bloemhof No 166 » Farm Wilde Honden Kloof No 216 » Portion 1/166 Bloemhof 	<ul style="list-style-type: none"> » Remaining Extent of Farm No 381 » Remaining Extent of Farm Wilton No 409 » Portion 7 of Farm No 381 » Remaining Extent of Farm Hartebeest Kuil No 220 » Portion 1 of Farm Hartebeest Kuil No 220 » Portion 2 of Farm Haartebeestkuil No 220 » Portion 2 of Farm No 230 » Remaining Extent of Portion 4 (Pruim Plaas) of Farm Draai Hoek No 221 	<ul style="list-style-type: none"> » Farm No 369 » Portion 2 of Farm Shepherds Rest No 272 » Remainder of Farm Varkens Kuil No 269 » Portion 3 (Vlak Leegte) of Farm Driefontein No 259 » Portion 1 (Opmeet Fontein) of farm Gras Fonteyn No 258 » Remainder of Farm Draai Van Klein Visrivier 254 » Portion 1 of Farm Bothas Hoop 358m » Remainder of 271 of Farm Request 271 » Portion 2 of Farm Request 271 » Portion 1 of Farm Request 271 » Portion 9 of Farm Britzkraal No 253 » Portion 8 (a Portion of Portion 7) of Farm Britzkraal No 253 	<ul style="list-style-type: none"> » Remainder of Farm Brand Rug No 268 » Remainder of Farm Varkens Kuil No 269 » Remainder of Portion 3 of Farm Commadagga No 266 » Portion 1 of Farm Vaalkdrans No 299 » Portion 1 Glen Roy of Farm Varkens Kuil No 269 » Portion 3 Glen Roy a portion of Portion 1 of Farm Modderfontein No 302 » Portion 2 Spitzkop of Farm Varkens Kuil No 269 	<ul style="list-style-type: none"> » Remaining Extent of Farm Brackkloof No 183 » Portion 5 of Farm Hilton No 182 » Portion 8 of Farm Hilton No 182 » Portion 4 of Farm Vandermerweskraal No 132 » Portion 1 of Farm Thursford No 183 	<ul style="list-style-type: none"> » Remainder of Farm Table Hill Farm No 187 » Portion 2 of Table Hill Farm No 187 » Portion 3 of the Farm Table Hill Farm No 187 » Remainder of the Farm Hounshow No 131 » Portion 1 of Farm Draai No 184 » Portion 1 of Farm No 132 » Portion 1 of Farm Burnt Kraal No 189 » Portion 1 of Farm Table Hill No 187 	<ul style="list-style-type: none"> » Farm 434 » Portion 3 of Farm Driefontein 259 	<ul style="list-style-type: none"> » Portion 9 of Farm Britzkraal No 253 » Portion 8 (a Portion of Portion 7) of Farm Britzkraal No 253 » Portion 7 of Farm Britzkraal No 253 » Portion 1 of Farm Bothas Hoop No 358 	<ul style="list-style-type: none"> » Portion 9 of Farm Britzkraal No 253 » Portion 8 (a Portion of Portion 7) of Farm Britzkraal No 253 » Portion 7 of Farm Britzkraal No 253 » Portion 1 of Farm Bothas Hoop No 358
Capacity	Up to 333MW	Up to 324MW	Up to 576MW	Up to 297MW	Up to 264MW	Up to 213MW	400kV	Up to 300MW	Up to 300MW
Technology	Up to 37 wind turbines	Up to 36 wind turbines	Up to 64 wind turbines	Up to 33 wind turbines	Up to 47 wind turbines	Up to 38 wind turbines	Main Transmission Substation	Photovoltaic (PV) Panels	Photovoltaic (PV) Panels
Associated infrastructure	On-site switching station, collector substation, 132kV power line, access roads (gravel in nature), concrete foundations and hardstands, laydown areas, cabling to be laid underground where practical, temporary concrete batching plant, staff accommodation, and operation and maintenance buildings.						Access roads (gravel in nature)	Collector substation, 132kV power line, access roads (gravel in nature), inverters, temporary laydown areas, staff accommodation, Operation and Maintenance Buildings	

Basic Assessment Process: In terms of Sections 24 and 24D of the National Environmental Management Act (No 107 of 1998), as read with Government Notice R324 – R327, as amended, Environmental Authorisation is required for each project. As the project sites are located within a REDZ and a Strategic Transmission Corridor, Basic Assessment (BA) processes are required to be undertaken in accordance with GN113 and GN114 (February 2018). Savannah Environmental is undertaking the required environmental assessment and public participation process. A Background Information Document (BID) is available for review and comment on the Savannah Environmental website at www.savannahsa.com/public-documents/energy-generation/

To obtain further information and register on the project database and submit comments or queries, please refer to the contact information:

Nicolene Venter of Savannah Environmental
P.O. Box 148, Sunninghill, 2157
Mobile: 060 978 8396
Tel: 011 656 3237
Fax: 086 684 0547
Email: publicprocess@savannahsa.com
Website: www.savannahsa.com



● Board lacks civil society presence to ensure sustainable development, civic and eco-rights groups argue

Nuclear watchdogs rip into regulator

Guy Rogers
rogers@theherald.co.za

Environmental and civil rights watchdogs have raised concerns about the absence of civil society representation on the board of the National Nuclear Regulator, an element required by law.

Koeborg Alert Alliance representative Peter Becker said according to the National Nuclear Regulator (NNR) Act, one member of the board had to be a civil society representative.

"However, when the cabinet announced a new board for the regulator on August 5, no such representative was included.

"This lack of representation is contributing to the ongoing weak governance at the regulator, the role of which is to monitor regulations compliance to ensure safety and the prevention of nuclear accidents."

Wildlife and Environment Society Algoa Bay chair Gary Koekemoer said the legal requirement for civil society representation on the board of the nuclear regulator was an example of how to ensure SAs democracy balanced environmental and citizen interests with those of the state and industry.

"Sustainable development and collective stewardship requires citizen participation and this becomes key in the nuclear industry where the mismanagement of toxic

waste, for instance, has severe consequences for future generations."

Koekemoer said he had been actively involved, as part of NoPENuke, in protesting against Eskom's bid to build a nuclear reactor at Thyspunt, between Cape St Francis and Oyster Bay, and supporting groups like the Thyspunt Alliance in their opposition on environmental and heritage grounds.

That decade-long battle resulted in the national environmental department's record of decision in 2017 that the project should rather proceed at Duynfontein in the Western Cape, adjacent to the existing Koeberg reactor.

He said when democracy came into effect in 1994 it had included excellent environmental legislation with checks and balances.

"But lately some of the regulations coming out of the department have been used as a rubber-stamp exercise where government and industry attempt to short-cut the process."

"We would hope that we have learnt from the state capture debacle that short cuts serve vested interests only and not the interests of citizens."

Thyspunt Alliance spokesperson Trudi Malan said the organisation had, in fact, raised the lack of civil society representation on the board of the regulator while they were opposing the Thyspunt bid.

"That was about three years

ago and all these years later we have still not heard back from them."

Southern African Faith Communities' Environment Institute (Safcei) executive director Francesca de Gasparis said the situation was unacceptable.

"Affected communities such as people living near Vaalputs, a radioactive waste dump in the Northern Cape, have the right to have a representative on the board who will represent their community and their interests for a safe and healthy environment."

"It is not right that mineral resources and energy minister Gwede Mantashe has not appointed a representative as stipulated in the Act."

Organisation Undoing Tax Abuse representative Liz McDaid said the organisation had also been trying without success to get answers from the authorities.

Makoma Lekalaka from Earthlife Africa Johannesburg said the organisation was concerned that the lack of a civil society representative on the regulator's board would mean no progress on cleaning up uranium-heavy toxic mine tailings around Johannesburg.

Becker noted that after Japan's 2011 Fukushima disaster, the International Atomic Energy Agency had recommended that nuclear regulators should be strengthened.

"Yet, according to the regulator's annual financial statements for 2018/2019, the gov-

PRIME PROPERTY: An aerial photograph of the Thyspunt area where Eskom had intended to build a nuclear reactor until its bid was quashed in 2017 by the environment department. The picture also shows the stone traps early Khoisan residents used to lay in the shallows to catch fish. Picture: THYSPUNT ALLIANCE



ernment grant was R16.5m, nearly 20% less than the R20m grant in 2010/2011, just before the Fukushima disaster."

The regulator's annual report also showed that more than one in 10 posts at the agency were vacant, he said.

"If it is both underfunded and understaffed, is the regulator still able to adequately monitor safety at Koeberg?"

"We would stand a better chance of knowing if we had a representative on the board, as required by law."

"The minister should immediately start the process of selecting a true representative of

civil society to serve on the National Nuclear Regulator board," he said.

Becker said that in addition to the non-compliance with the NNR Act, the prescribed process was also questionable.

"It is deeply problematic that we, as civil society, cannot elect our own representative, and that the Act allows this so-called representative to be appointed by the same minister who openly promotes nuclear power."

Mineral resources and energy department spokesperson Johannes Mokobane said the process to bring civil society

representation on the board of the regulator was under way.

"The minister has initiated a comprehensive consultative process with the National Economic Development and Labour Council and the South African National Civic Organisation aimed at identifying suitable candidates to be considered for appointment," Mokobane said.

"Upon conclusion of this process, the identified individuals will be considered by cabinet prior to their appointment being made effective and their identities being made public."

Still no word on lifting traditional circumcision ban

Lulamile Feni

Contralesa, the provincial health department and NGOs have stepped up efforts to ensure a safe summer initiation season by making traditional surgeons and nurses aware of the regulations governing SA's Covid-19 response.

Co-operative governance and traditional affairs minister Nkosazana Dlamini-Zuma has not yet lifted the ban on traditional circumcisions, though the pressure to do so is mounting.

There have already been a series of illegal circumcisions in Buffalo City, OR Tambo and Amathole.

Contralesa provincial secretary Nkosi Mkhanyiseli Dudumayo said the surgeons and nurses were being taught how to apply Covid-19 regulations to the traditional practice.

Both Contralesa and the SA National Civic Organisation (Sanco), which met this week, are angry that an announcement lifting the circumcision ban has not been made.

Sanco provincial secretary Tony Duba said communities had been patient since June, but "that patience is fading".

"We do not want anarchy caused by illegal initiations," Duba said.

"We do not want an uncontrolled situation. We want things to be done in accordance with the law, all Covid-19 regulations being observed."

Dudumayo said that at the meeting Contralesa deputy provincial chair Nkosi Langa

Mavuso had presented a proposal submitted to premier Oscar Mabuzyane to open the summer season.

Dudumayo said Contralesa and Sanco were disappointed that traditional leadership had not yet received a response.

"While we are treated with contemptuous attitudes, there has been no supervision of the traditional initiation rite.

"There has been one fatality and initiates hospitalised.

"To avert such a situation, we call for the summer season to be opened.

"Sanco leadership and NGOs in the health sector will take responsibility, and a programme will see to it that a refresher course is undertaken by traditional surgeons to minimise any blunders that may occur," Dudumayo said.

Contralesa and Sanco agreed that both structures would engage Mabuzyane and Cogta MEC Xolile Nqatha.

"The traditional initiation rite is not a recreational activity but a tradition of passage from boyhood to manhood.

"It is important that this institution which is protected in the main by the traditional leadership must be given the green light to continue.

"When the opening of [academic] schools was touted, it was said that schools were a controlled environment.

"We advance the same argument because there are responsible adults who are involved in the administration of the traditional rite of initiation," Dudumayo said. — Daily Dispatch

NOTICE OF BASIC ASSESSMENT PROCESSES PUBLIC PARTICIPATION PROCESS

DEVELOPMENT OF A CLUSTER OF RENEWABLE ENERGY FACILITIES BETWEEN SOMERSET EAST AND GRAHAMSTOWN, EASTERN CAPE

Proposed Activity: Development of a cluster of renewable energy facilities consisting of nine (9) projects, including six (6) wind farms, two (2) solar energy facilities and one (1) Main Transmission Substation (MTS).

Location: Between Somerset East and Grahamstown within the Cookhouse Renewable Energy Development Zone (REDZ) and the Eastern Strategic Transmission Corridor. The entire extent of the projects is located within the Sarah Baartman District Municipality and within the Blue Crane Route and the Makana Local Municipalities.

Project Name	Hamlett Wind Farm	Ripponn Wind Farm	Redding Wind Farm	Aeolus Wind Farm	Wind Garden Wind Farm	Fronteer Wind Farm	REDZ 3 Power Corridor 400MTS	Solaris Fields Solar Energy Facility	Sun Garden Solar Energy Facility
Applicant	Hamlett (Pty) Ltd	Ripponn (Pty) Ltd	Redding Wind (Pty) Ltd	Aeolus (Pty) Ltd	Wind Garden (Pty) Ltd	Fronteer (Pty) Ltd	Wind Relic (Pty) Ltd	Solaris Fields (Pty) Ltd	Sun Garden (Pty) Ltd
Affected properties (i.e. project site)	<ul style="list-style-type: none"> Farm Vaalkop No 164 Remainder of Portion 1 (Middlevale) of Farm Van Aardt's Kraal No 163 Portion 1 of Farm Jaskraal No 160 Remainder of Farm Rietfontein A No 159 Portion 1 of Farm Rietfontein A No 159 Remainder of Farm Jaskraal No 160 Remainder of Farm Nieuwe Grand A No 129 Remainder of Farm Wilton No 409 Portion 2 of Farm Middleton No 219 Remainder of Farm Bloemhof No 166 Farm Wilde Honden Kloof No 216 Portion 1/166 Bloemhof 	<ul style="list-style-type: none"> Remaining Extent of Farm No 381 Remaining Extent of Farm Wilton No 409 Portion 7 of Farm No 381 Remaining Extent of Farm Hartebeest Kuil No 220 Portion 1 of Farm Hartebeest Kuil No 220 Portion 2 of Farm Hartebeestkuil No 220 Portion 2 of Farm No 230 Remaining Extent of Portion 4 (Pruim Plaas) of Farm Draai Hoek No 221 	<ul style="list-style-type: none"> Farm No 369 Portion 2 of Farm Shepherds Rest No 272 Remainder of Farm Varkens Kuil No 269 Portion 3 (Vlak Leegte) of Farm Driefontein No 259 Portion 1 (Opmeet Fontein) of farm Gras Fonteyn No 258 Remainder of Farm Draai Van Klein Visrivier 254 Portion 1 of Farm Bothas Hoop 358m Remainder of 271 of Farm Request 271 Portion 2 of Farm Request 271 Portion 1 of Farm Request 271 Portion 9 of Farm Britzkraal No 253 Portion 8 (a Portion of Portion 7) of Farm Britzkraal No 253 	<ul style="list-style-type: none"> Remainder of Farm Brand Rug No 268 Remainder of Farm Varkens Kuil No 269 Remainder of Portion 3 of Farm Commadagga No 266 Portion 1 of Farm Vaalkdrans No 299 Portion 1 Glen Roy of Farm Varkens Kuil No 269 Portion 3 Glen Roy a portion of Portion 1 of Farm Modderfontein No 302 Portion 2 Spitzkop of Farm Varkens Kuil No 269 	<ul style="list-style-type: none"> Remaining Extent of Farm Brackkloof No 183 Portion 5 of Farm Hilton No 182 Portion 8 of Farm Hilton No 182 Portion 4 of Farm Vandermerweskraal No 132 Portion 1 of Farm Thursford No 183 	<ul style="list-style-type: none"> Remainder of Farm Table Hill Farm No 187 Portion 2 of Table Hill Farm No 187 Portion 3 of the Farm Table Hill Farm No 187 Remainder of the Farm Hounshoew No 131 Portion 1 of Farm Draai Farm No 184 Portion 1 of Farm No 132 Portion 1 of Farm Burnt Kraal No 189 Portion 1 of Farm Table Hill No 187 	<ul style="list-style-type: none"> Farm 434 Portion 3 of Farm Driefontein 259 	<ul style="list-style-type: none"> Portion 9 of Farm Britzkraal No 253 Portion 8 (a Portion of Portion 7) of Farm Britzkraal No 253 Portion 7 of Farm Britzkraal No 253 Portion 1 of Farm Bothas Hoop No 358 	<ul style="list-style-type: none"> Portion 9 of Farm Britzkraal No 253 Portion 8 (a Portion of Portion 7) of Farm Britzkraal No 253 Portion 7 of Farm Britzkraal No 253 Portion 1 of Farm Bothas Hoop No 358
Capacity	Up to 333MW	Up to 324MW	Up to 576MW	Up to 297MW	Up to 264MW	Up to 213MW	400kV	Up to 300MW	Up to 300MW
Technology	Up to 37 wind turbines	Up to 36 wind turbines	Up to 64 wind turbines	Up to 33 wind turbines	Up to 47 wind turbines	Up to 38 wind turbines	Main Transmission Substation	Photovoltaic (PV) Panels	Photovoltaic (PV) Panels
Associated infrastructure	On-site switching station, collector substation, 132kV power line, access roads (gravel in nature), concrete foundations and handstands, laydown areas, cabling to be laid underground where practical, temporary concrete batching plant, staff accommodation, and operation and maintenance buildings.						Access roads (gravel in nature)	Collector substation, 132kV power line, access roads (gravel in nature), inverters, temporary laydown areas, staff accommodation, Operation and Maintenance Buildings	

Basic Assessment Process: In terms of Sections 24 and 24D of the National Environmental Management Act (No 107 of 1998), as read with Government Notice R324 – R327, as amended, Environmental Authorisation is required for each project. As the project sites are located within a REDZ and a Strategic Transmission Corridor, Basic Assessment (BA) processes are required to be undertaken in accordance with GN113 and GN114 (February 2018). Savannah Environmental is undertaking the required environmental assessment and public participation process. A Background Information Document (BID) is available for review and comment on the Savannah Environmental website at www.savannahsa.com/public-documents/energy-generation/

To obtain further information and register on the project database and submit comments or queries, please refer to the contact information:

Nicolene Venter of Savannah Environmental
P.O. Box 148, Sunninghill, 2157
Mobile: 060 978 8396
Tel: 011 656 3237
Fax: 086 684 0547
Email: publicprocess@savannahsa.com
Website: www.savannahsa.com



**KENNISGEWING VAN BASIESE EVALUERINGSPROSESSE
OPENBARE DEELNAMEPROSES**

ONTWIKKELING VAN 'N GROEP HERNUBARE KRAGANLEGTE TUSSEN SOMERSET-OOS EN GRAHAMSTAD, OOS-KAAP

Beoogde aktiwiteit: Die ontwikkeling van 'n groep hernubare kragaanlegte bestaande uit nege (9) projekte, insluitend ses (6) windplase, twee (2) sonkragaanlegte en een (1) hooftransmissiesubstasie (HTS).

Ligging: Tussen Somerset-Oos en Grahamstad in die Cookhouse Hernubare Kragontwikkelingsone (REDZ) en die Oostelike Strategiese Transmissiekorridor. Die totale omvang van die projekte is in die Sarah Baartman Distrikmunisipaliteit en in die Blou Kraanvoëlroete- en die Makana Plaaslike Munisipaliteit.

Projeknaam	Hamlett Windplaas	Ripponn Windplaas	Redding Windplaas	Aeolus Windplaas	Wind Garden Windplaas	Fronteer Windplaas	REDZ 3 Kragkorridor 400 HTS	Solaris Fields Sonkragaanleg	Sun Garden Sonkragaanleg
Applikant	Hamlett (Edms.) Bpk.	Ripponn (Edms.) Bpk.	Redding Wind (Edms.) Bpk.	Aeolus (Edms.) Bpk.	Wind Garden (Edms.) Bpk.	Fronteer (Edms.) Bpk.	Wind Relic (Edms.) Bpk.	Solaris Fields (Edms.) Bpk.	Sun Garden (Edms.) Bpk.
Geaffekteerde eiendomme (d.i. projekterrein)	<ul style="list-style-type: none"> » Plaas Vaalkop No. 164 » Restant van Gedeelte 1 (Middlevale) van plaas Van Aardts Kraal No. 163 » Gedeelte 1 van plaas Jaskraal No. 160 » Restant van plaas Riet Fontein A No. 159 » Gedeelte 1 van Plaas Riet Fontein A No. 159 » Restant van plaas Jaskraal No. 160 » Restant van plaas Nieuwe Grond A No. 129 » Restant van plaas Wilton No. 409 » Gedeelte 2 van plaas Middleton No. 219 » Restant van plaas Bloemhof No. 166 » Plaas Wilde Honden Kloof No. 216 » Gedeelte 1/166 Bloemhof 	<ul style="list-style-type: none"> » Restant van Plaas No. 381 » Restant van Plaas Wilton No. 409 » Gedeelte 7 van Plaas No. 381 » Restant van Plaas Hartebeest Kuil No. 220 » Gedeelte 1 van plaas Hartebeest Kuil No. 220 » Gedeelte 2 van plaas Haartebeestkuil No. 220 » Gedeelte 2 van Plaas No. 230 » Restant van Gedeelte 4 (Pruim Plaas) van plaas Draai Hoek No. 221 	<ul style="list-style-type: none"> » Plaas No. 369 » Gedeelte 2 van plaas Shepherds Rest No. 272 » Restant van plaas Varkens Kuil No. 269 » Gedeelte 3 (Vlak Leegte) van plaas Driefontein No. 259 » Gedeelte 1 (Opmeet Fontein) van plaas Gras Fonteyn No. 258 » Restant van plaas Draai Van Klein Visrivier 254 » Gedeelte 1 van plaas Bothas Hoop 358m » Restant van 271 van plaas Request 271 » Gedeelte 2 van plaas Request 271 » Gedeelte 1 van plaas Request 271 » Gedeelte 9 van plaas Britzkraal No. 253 » Gedeelte 8 ('n Gedeelte van Gedeelte 7) van plaas Britzkraal No. 253 	<ul style="list-style-type: none"> » Restant van plaas Brand Rug No. 268 » Restant van plaas Varkens Kuil No. 269 » Restant van Gedeelte 3 van plaas Commadagga No. 266 » Gedeelte 1 van plaas Vaalkdrans No. 299 » Gedeelte 1 Glen Roy van plaas Varkens Kuil No. 269 » Gedeelte 3 Glen Roy ('n Gedeelte van Gedeelte 1) van plaas Modderfontein No. 302 » Gedeelte 2 Spitzkop van plaas Varkens Kuil No. 269 	<ul style="list-style-type: none"> » Restant van plaas Brackkloof No. 183 » Gedeelte 5 van plaas Hilton No. 182 » Gedeelte 8 van plaas Hilton No. 182 » Gedeelte 4 van plaas Vandermerweskraal No. 132 » Gedeelte 1 van plaas Thursford No. 183 	<ul style="list-style-type: none"> » Restant van plaas Table Hill Farm No. 187 » Gedeelte 2 van Table Hill Farm No. 187 » Gedeelte 3 van die plaas Table Hill Farm No. 187 » Restant van die plaas Hounshow No. 131 » Gedeelte 1 van plaas Draai Farm No. 184 » Gedeelte 1 van Plaas No. 132 » Gedeelte 1 van plaas Burnt Kraal No. 189 » Gedeelte 1 van plaas Table Hill No. 187 	<ul style="list-style-type: none"> » Plaas 434 » Gedeelte 3 van plaas Driefontein 259 	<ul style="list-style-type: none"> » Gedeelte 9 van plaas Britzkraal No. 253 » Gedeelte 8 ('n Gedeelte van Gedeelte 7) van plaas Britzkraal No. 253 » Gedeelte 7 van plaas Britzkraal No. 253 » Gedeelte 1 van plaas Bothas Hoop No. 358 	<ul style="list-style-type: none"> » Gedeelte 9 van plaas Britzkraal No. 253 » Gedeelte 8 ('n Gedeelte van Gedeelte 7) van plaas Britzkraal No. 253 » Gedeelte 7 van plaas Britzkraal No. 253 » Gedeelte 1 van plaas Bothas Hoop No. 358
Vermoë	Hoogstens 333 MW	Hoogstens 324 MW	Hoogstens 576 MW	Hoogstens 297 MW	Hoogstens 264 MW	Hoogstens 213 MW	400 kV	Hoogstens 300 MW	Hoogstens 300 MW
Tegnologie	Tot 37 windturbines	Tot 36 windturbines	Tot 64 windturbines	Tot 33 windturbines	Tot 47 windturbines	Tot 38 windturbines	Hooftransmissiesubstasie	Fotovoltaïese (FV) panele	Fotovoltaïese (FV) panele
Verwante infrastruktuur	Interne skakelstasie, kollektorsubstasie, 132 kV kraglyn, toegangspaaie (gruis van aard), betonfondasies en vasteblaaie, stapelwerwe, kables wat ondergronds gelê moet word waar prakties moontlik, tydelike betonlotaanleg, personeelverblyf en bedryfs- en instandhoudingsgeboue.						Toegangspaaie (gruis van aard)	Kollektorsubstasie, 132 kV kraglyn, toegangspaaie (gruis van aard), wisselrigters, tydelike stapelwerwe, personeelverblyf, en bedryfs- en instandhoudingsgeboue	

Basiese Evalueringsproses: Ingevolge Artikel 24 en 24D van die Nasionale Wet op Omgewingsbestuur (Wet 107 van 1998), saamgelees met Staatskennisgewing R324 tot R327, soos gewysig, moet 'n Omgewingsmagtiging vir elke projek onderneem word. Aangesien die projekterreine in 'n REDZ en 'n Strategiese Transmissiekorridor geleë is, moet Basiese Evalueringsprosesse (BE's) ingevolge Staatskennisgewing R113 en R114 (Februarie 2018) onderneem word. Savannah Environmental onderneem die vereiste omgewingsevaluering en openbare deelnameproses. 'n Agtergrondinligtingsdokument (AID) is beskikbaar vir oorsig en kommentaar op Savannah Environmental se webwerf by www.savannahsa.com/public-documents/energy-generation/

Raadpleeg asseblief die kontakbesonderhede hieronder om meer inligting te bekom en om op die projek se databasis te registreer en kommentaar of navrae in te dien:

Nicolene Venter van Savannah Environmental
 Posbus 148, Sunninghill, 2157
 Selfoon: 060 978 8396
 Tel: 011 656 3237
 Faks: 086 684 0547
 E-pos: publicprocess@savannahsa.com
 Webwerf: www.savannahsa.com





KALEIDOSKOOP VAN LEWE

Soeke na 'n lewe van sin en betekenis ...

Ds Paul Odendaal

Seëls was klein gegraveerde voorwerpe, meestal in die vorm van 'n ring om af te drukke in klei of was te maak. Seëlafdrukke wys dat die dokument eg is, of dat die dokument nog nie ooggemaak is nie.

Op die seël was gewoonlik die eienaar se naam of kop, amp of familiewapen gegraveer. 'n Seël kon aan 'n persoon gegee word, om aan hom die mag te gee om die eienaar van die seël te verteenwoordig. So lees ons in Gen 41:42 dat koning Farao aan Josef, wat 'n slaaf was in Egipte, sy seëlring gee as teken dat hy nou die tweede hoogste is in die Egiptiese Ryk en dat hy met die Farao se seëlring namens die Farao kon regeer.

Die Bybel noem twee gevalle waar seëls gebruik is om ingange te verseël. Toe die profeet Daniël in die leeu kuil gegooi is, staan daar in Dan 6:18: "Daar is 'n klip gebring en op die opening van die leeu kuil gesit. Die koning het die opening verseël met sy seëlring en met dié van sy hoofamptenare sodat daar niks aan Daniël se lot verander sou kon word nie." Toe Jesus Christus se liggaam in 'n graf gesit is, het die Romeine ook sy graf verseël, sodat die Jode nie kon sê dat Jesus se liggaam gesteel is nie.

Daarom het 'n seëlring deur die geskiedenis van duisende jare altyd die rol vervul om iets te bevestig as outentiek, eg en oorspronklik. Wanneer 'n dokument 'n koninklike seël opgehad het, was dit altyd die finale opdrag van die koning en kan niks daaraan verander word nie. Daarom het die opstellers van die Heidelbergse Kategismus ook die doop beskryf as 'n seël, dat die Drie Enige God die dopeling aanneem om sy kind te wees.

Jou verlossing word as't ware verseël. Jesus Christus het werklik vir jou ook gesterf. Daar word verseël dat jy deel het aan al God se beloftes.

Prof Willie Jonker skryf dat dit in die kinderdoop gaan oor God se voorkomende genade wat die dopeling red. Jesus Christus het gesterf vir my erfsonde en ook alle sonde wat ek nog in my lewe sal doen. Dit is nie die dopeling se geloof en bekering wat die oorsaak of grond van die verlossing is nie. Dit is God wat uit vrye inisiatief sy verlossingsplan met die doop aan die dopeling kom beseël het.

Deur die doop word ons ook verseël as kinders van Abraham. Ons kry deel aan die gemeente. Ons as gemeente ontvang die dopelinge as medebroers en -susters in die Here. Ons as gemeente het net soos hulle ouers en grootouers, die verantwoordelikheid om vir die twee jongelinge die regte pad te wys.

Die dopelinge gaan groot word. Hulle gaan leer om te dans. Dan gaan hulle met hulle metgeselle en lewensmaat dans. Om te dans moet jy leer. Verbondopvoeding is om te leer om in ritme saam met die Drie Enige God te dans. In ritme met die Drie Enige God, beteken om volgens die wil van God te dans. In die doop wat plaasvind "in die naam van die Vader en die Seun en die Heilige Gees", dans die Drie Enige God met die doopplegtigheid. Die Griekse woord om saam met God te dans is "perichoresis".

Die jongeling moet net leer, om soos hulle ouer word, ook saam met die Drie Enige God te dans. Daarom word 'n lewe saam met Christus, so goed opgesom in die lied van: "The Lord of the dance." Die Drie Enige God gee die melodie en die ritme aan. Die dopeling moet net inval by God se dans. Johannes Calvyn het gesê dat die twee vernaamste elemente van geloofsoopvoeding moet liefde en strengheid wees. Liefde kweek geborgenheid en strengheid kweek sekuriteit. Met geborgenheid en sekuriteit het 'n kind alles om 'n suksesvolle grootmenslewe eendag te betree. 'n Jong boompie moet ook konstant gesnoei word om vorm aan te neem. As 'n Kareeboom gelos word, word dit 'n bos. Wanneer 'n Kareeboom gedurig gesnoei word, word dit 'n pragtige boom waaronder jy kan sit en waaronder

Fraudsters Target Legal Practitioners In Latest Fund Scam

The Legal Practitioners Fidelity Fund (LPFF) wishes to alert the public about a current scam attempting to defraud legal professionals by pretending to represent our organisation. This is of great concern to the LPFF, especially given our desire to enhance justice and contribute to the growth of the legal fraternity.

The modus operandi of the fraudsters is to contact legal practitioners about an

erroneous overpayment made into their bank accounts, purportedly by the LPFF. They then request the practitioner to refund a certain amount to them urgently to correct this error. Fraudsters have long used this technique to scam companies and individuals and as such, the LPFF feels this warning is equally relevant to those outside the legal profession.

We encourage legal practitioners to remain vigilant and to contact the LPFF to verify any communications bearing our name that raises suspicion.

Bonfils Barendereka, (Public Relations and Communications) at the LPFF, is available for media interviews to discuss this scam and the red flags that legal practitioners, and other individuals, can look out for to protect themselves from similar fraud attempts.

Amen.

(Ds. Paul Odendaal is leraar van die NG Kerk Adelaide.)

KENNISGEWING VAN BASIESE EVALUERINGSPROSESSE OPENBARE DEELNAMEPROSES

ONTWIKKELING VAN 'N GROEP HERNUBARE KRAGANLEGTE TUSSEN SOMERSET-OOS EN GRAHAMSTAD, OOS-KAAP

Beoogde aktiwiteit: Die ontwikkeling van 'n groep hernubare kragaanlegte bestaande uit nege (9) projekte, insluitend ses (6) windplase, twee (2) sonkragaanlegte en een (1) hooftransmissiesubstasie (HTS).

Ligging: Tussen Somerset-Oos en Grahamstad in die Cookhouse Hernubare Kragontwikkelingsone (REDZ) en die Oostelike Strategiese Transmissiekorridor. Die totale omvang van die projekte is in die Sarah Baartman Distrikmunisipaliteit en in die Blou Kraanvoëlroete- en die Makana Plaaslike Munisipaliteit.

Projeknaam	Hamlett Windplaas	Ripponn Windplaas	Redding Windplaas	Aeolus Windplaas	Wind Garden Windplaas	Fronteer Windplaas	REDZ 3 Kragkorridor 400 HTS	Solaris Fields Sonkragaanleg	Sun Garden Sonkragaanleg
Applicant	Hamlett (Edms.) Bpk.	Ripponn (Edms.) Bpk.	Redding Wind (Edms.) Bpk.	Aeolus (Edms.) Bpk.	Wind Garden (Edms.) Bpk.	Fronteer (Edms.) Bpk.	Wind Relic (Edms.) Bpk.	Solaris Fields (Edms.) Bpk.	Sun Garden (Edms.) Bpk.
Geaffekteerde eiendom (d.i. projekterrein)	» Plaas Vaalkop No. 164 » Restant van Gedeelte 1 (Middlevale) van plaas Van Aardts Kraal No. 163 » Gedeelte 1 van plaas Jaskraal No. 160 » Restant van plaas Rietfontein A No. 159 » Gedeelte 1 van Plaas Rietfontein A No. 159 » Restant van plaas Jaskraal No. 160 » Restant van plaas Nieuwe Grond A No. 129 » Restant van plaas Wilton No. 409 » Gedeelte 2 van plaas Middleton No. 219 » Restant van plaas Bloemhof No. 166 » Plaas Wilde Honden Kloof No. 216 » Gedeelte 1/166 Bloemhof	» Restant van Plaas No. 381 » Restant van Plaas Wilton No. 409 » Gedeelte 7 van Plaas No. 381 » Restant van Plaas Hartebeest Kuil No. 220 » Gedeelte 1 van plaas Hartebeest Kuil No. 220 » Gedeelte 2 van plaas Haartebeestkuil No. 220 » Gedeelte 2 van Plaas No. 230 » Restant van Gedeelte 4 (Pruim Plaas) van plaas Draai Hoek No. 221	» Plaas No. 369 » Gedeelte 2 van plaas Shepherds Rest No. 272 » Restant van plaas Varkens Kuil No. 269 » Gedeelte 3 (Vlak Leegte) van plaas Driefontein No. 259 » Gedeelte 1 (Opmeet Fontein) van plaas Grasfonteyn No. 258 » Restant van plaas Draai Van Klein Visrivier 254 » Gedeelte 1 van plaas Bothas Hoop 358m » Restant van 271 van plaas Request 271 » Gedeelte 2 van plaas Request 271 » Gedeelte 1 van plaas Request 271 » Gedeelte 9 van plaas Britzkraal No. 253 » Gedeelte 8 ('n Gedeelte van Gedeelte 7) van plaas Britzkraal No. 253	» Restant van plaas Brand Rug No. 268 » Restant van plaas Varkens Kuil No. 269 » Restant van Gedeelte 3 van plaas Commadagga No. 266 » Gedeelte 1 van plaas Vaalkrans No. 299 » Gedeelte 1 Glen Roy van plaas Varkens Kuil No. 269 » Gedeelte 3 Glen Roy ('n Gedeelte van Gedeelte 1) van plaas Modderfontein No. 302 » Gedeelte 2 Spitzkop van plaas Varkens Kuil No. 269	» Restant van plaas Brackkloof No. 183 » Gedeelte 5 van plaas Hilton No. 182 » Gedeelte 8 van plaas Hilton No. 182 » Gedeelte 4 van plaas Vandermerweskraal No. 132 » Gedeelte 1 van plaas Thurstford No. 183	» Restant van plaas Table Hill Farm No. 187 » Gedeelte 2 van Table Hill Farm No. 187 » Gedeelte 3 van die plaas Table Hill Farm No. 187 » Restant van die plaas Hounshow No. 131 » Gedeelte 1 van plaas Draai Farm No. 184 » Gedeelte 1 van Plaas No. 132 » Gedeelte 1 van plaas Burnt Kraal No. 189 » Gedeelte 1 van plaas Table Hill No. 187	» Plaas 434 » Gedeelte 3 van plaas Driefontein 259	» Gedeelte 9 van plaas Britzkraal No. 253 » Gedeelte 8 ('n Gedeelte van Gedeelte 7) van plaas Britzkraal No. 253 » Gedeelte 7 van plaas Britzkraal No. 253 » Gedeelte 1 van plaas Bothas Hoop No. 358	» Gedeelte 9 van plaas Britzkraal No. 253 » Gedeelte 8 ('n Gedeelte van Gedeelte 7) van plaas Britzkraal No. 253 » Gedeelte 7 van plaas Britzkraal No. 253 » Gedeelte 1 van plaas Bothas Hoop No. 358
Vermoë	Hoogstens 333 MW	Hoogstens 324 MW	Hoogstens 576 MW	Hoogstens 297 MW	Hoogstens 264 MW	Hoogstens 213 MW	400 kV	Hoogstens 300 MW	Hoogstens 300 MW
Tegnologie	Tot 37 windturbines	Tot 36 windturbines	Tot 64 windturbines	Tot 33 windturbines	Tot 47 windturbines	Tot 38 windturbines	Hooftransmissiesubstasie	Fotovoltaïese (FV) panele	Fotovoltaïese (FV) panele
Verwante infrastruktuur	Interne skakelstasie, kollektorsubstasie, 132 kV kraglyn, toegangspaaie (gruis van aard), betonfondasies en vasteblaaie, stapelwerwe, kabels wat ondergronds gelê moet word waar praktiese moontlik, tydelike betonlotaanleg, personeelverblyf en bedryfs- en instandhoudingsgeboue.						Toegangspaaie (gruis van aard)	Kollektorsubstasie, 132 kV kraglyn, toegangspaaie (gruis van aard), wisselrigters, tydelike stapelwerwe, personeelverblyf, en bedryfs- en instandhoudingsgeboue	

Basiese Evalueringproses: Ingevolge Artikel 24 en 24D van die Nasionale Wet op Omgewingsbestuur (Wet 107 van 1998), saamgelees met Staatskennisgewing R324 tot R327, soos gewysig, moet 'n Omgewingsmagtiging vir elke projek onderneem word. Aangesien die projekterreine in 'n REDZ en 'n Strategiese Transmissiekorridor geleë is, moet Basiese Evalueringprosesse (BE's) ingevolge Staatskennisgewing R113 en R114 (Februarie 2018) onderneem word. Savannah Environmental onderneem die vereiste omgewingsevaluering en openbare deelnameproses. 'n Agtergrondinligtingsdokument (AID) is beskikbaar vir oorsig en kommentaar op Savannah Environmental se webwerf by www.savannahsa.com/public-documents/energy-generation/

Raadpleeg asseblief die kontakbesonderhede hieronder om meer inligting te bekom en om op die projek se databasis te registreer en kommentaar of navrae in te dien:

Nicolene Venter van Savannah Environmental
Posbus 148, Sunninghill, 2157
Selfoon: 060 978 8396
Tel: 011 656 3237
Faks: 086 684 0547
E-pos: publicprocess@savannahsa.com
Webwerf: www.savannahsa.com

savannah
environmental

LIVEREAD