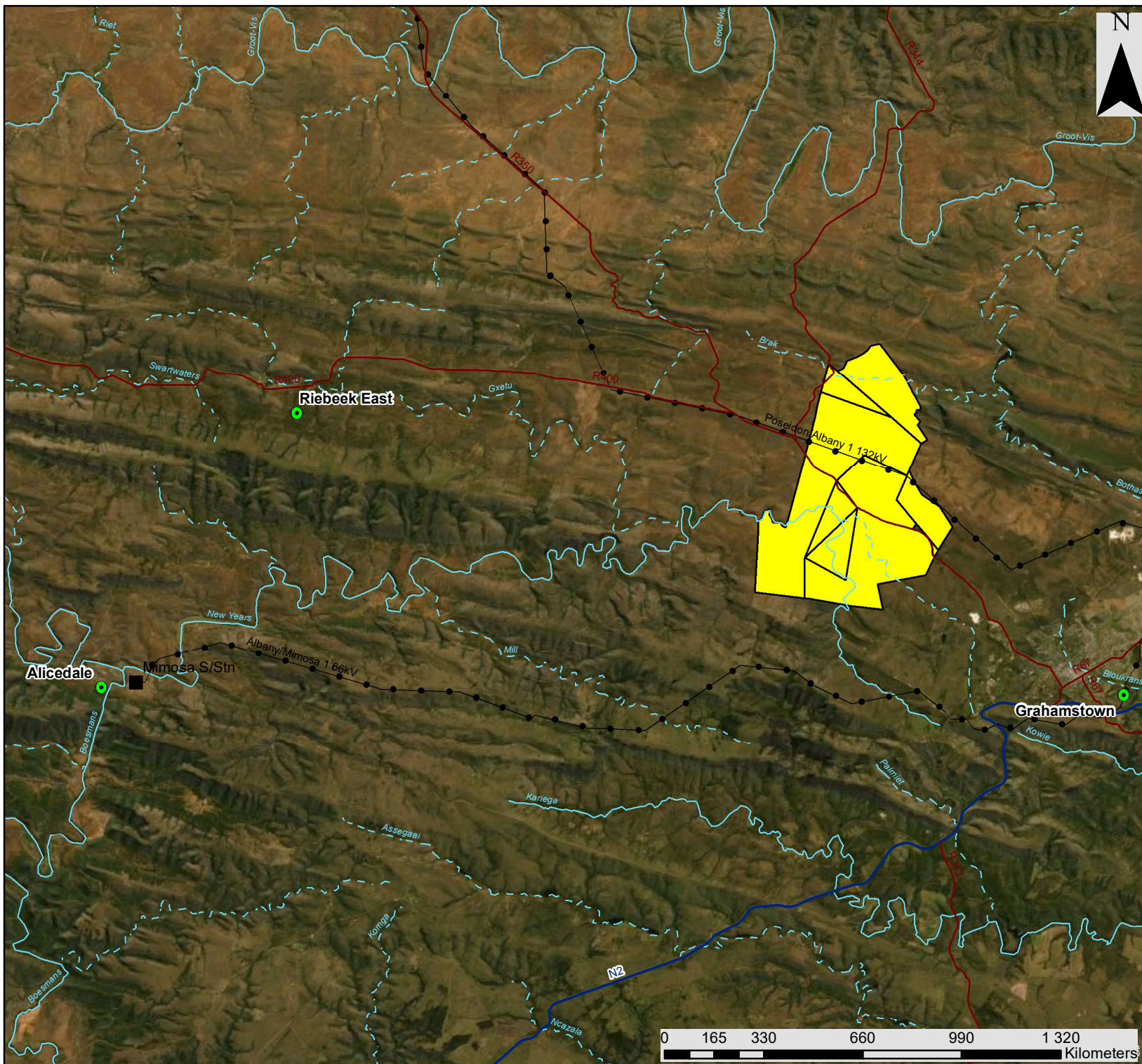


Fronteer Wind Farm, Eastern Cape

Locality Map

Legend

- Town
- Eskom Substation (Existing)
- Eskom Power Line (Existing)
- Regional Road
- National Road
- Perennial River
- - - Non-perennial River
- Project Site



savannah
environmental



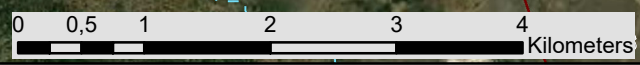
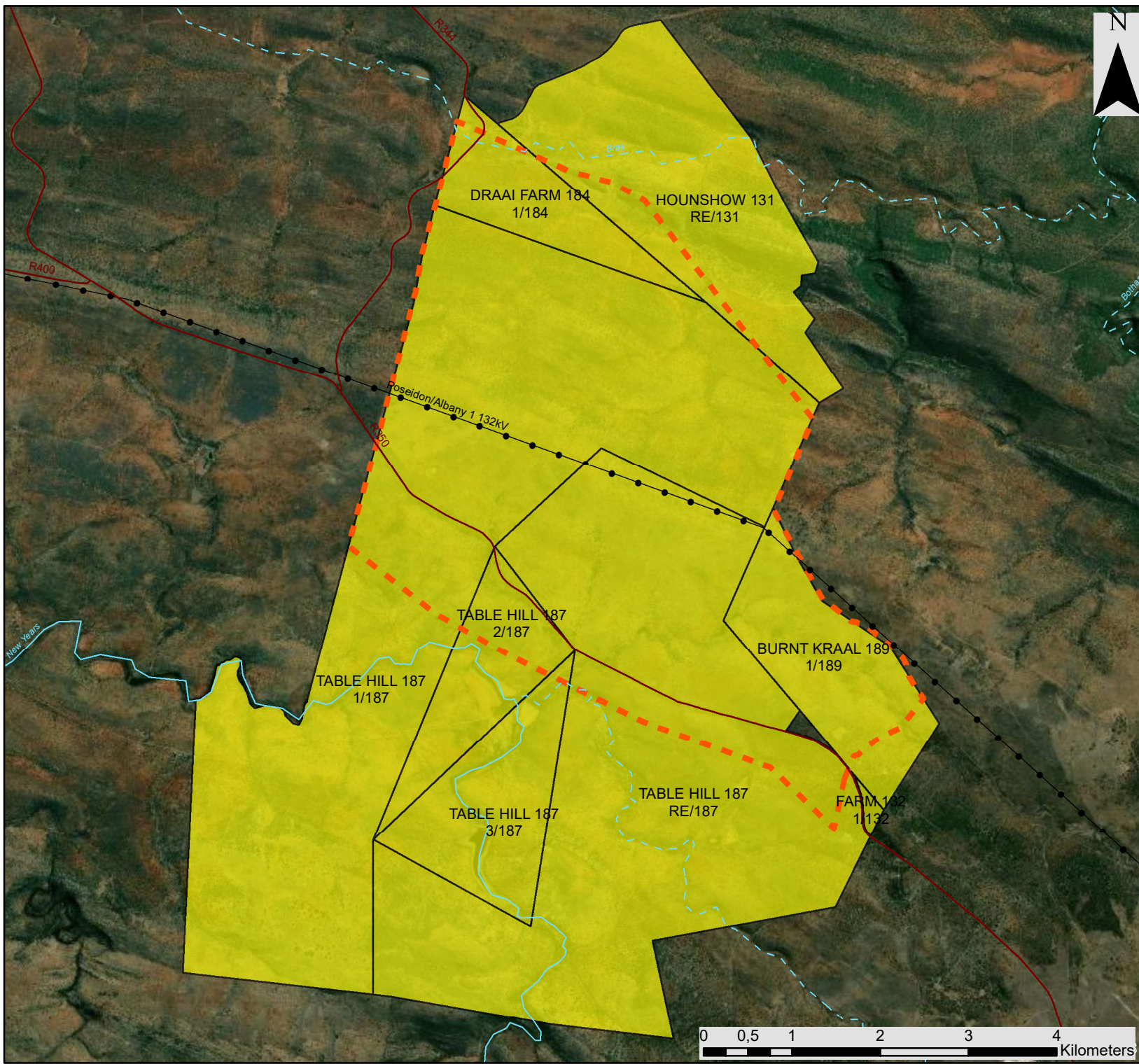
Fronteer Wind Farm, Eastern Cape

Locality Map



Legend

- Town
- Regional Road
- Eskom Power Line (Existing)
- Perennial River
- Non-perennial River
- Project Site
- Development Envelope



Fronteer Wind Farm, Eastern Cape

Development footprint assessed
within the BA process

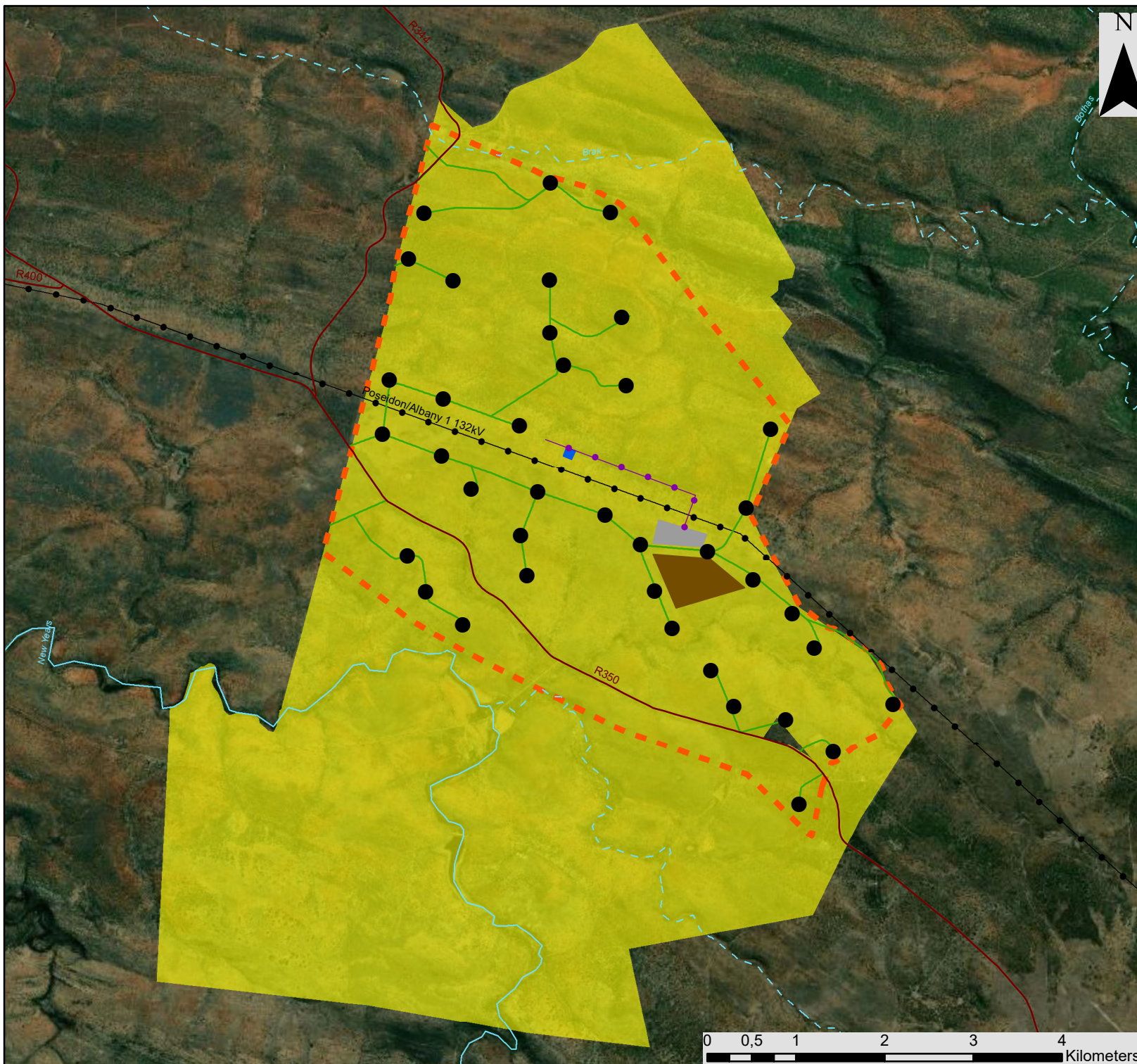
Legend

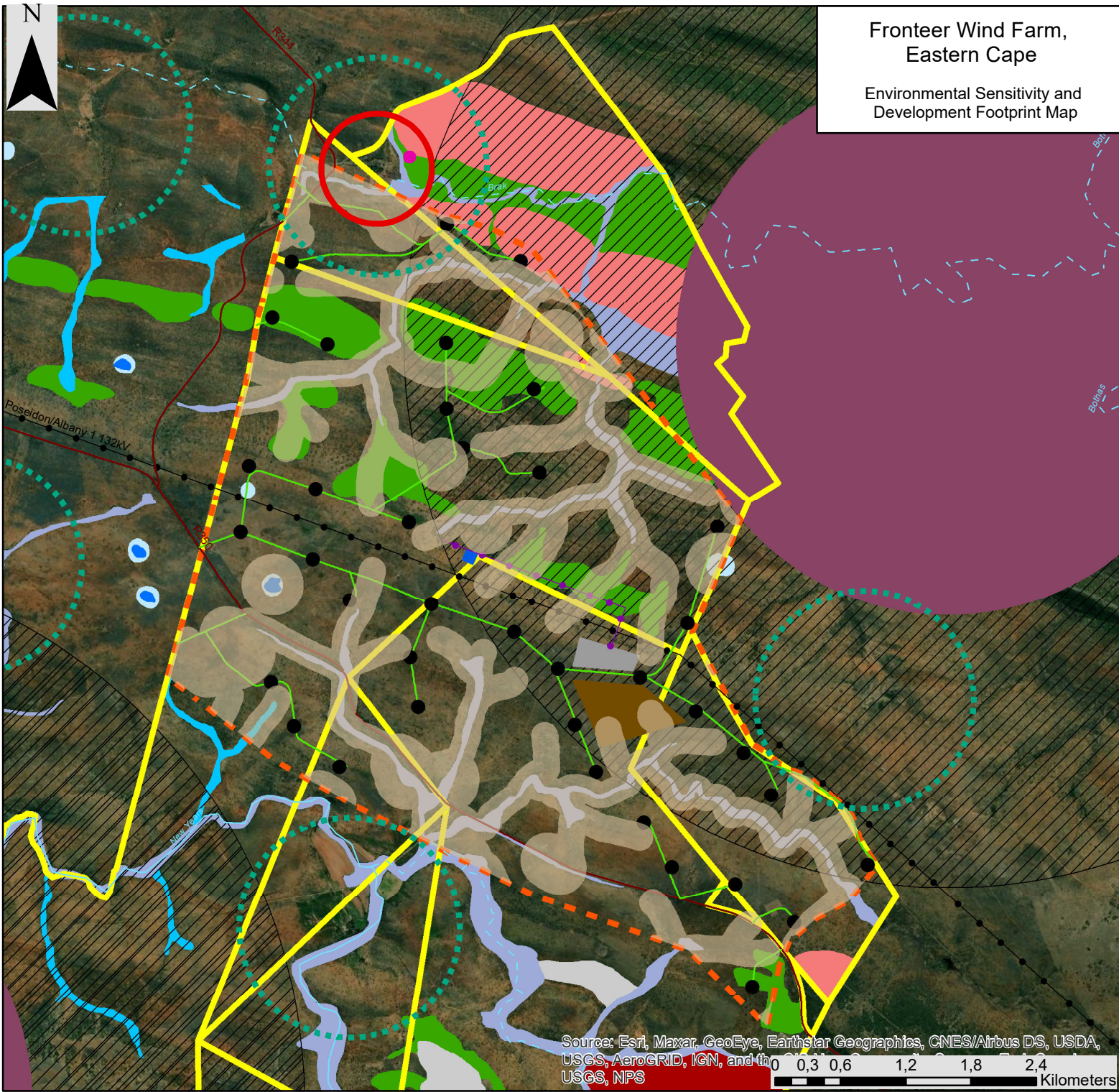
- Eskom Power Line (Existing)
- Regional Road
- Perennial River
- - - Non-perennial River
- - - Development Envelope
- Project Site

Layout Plan:

- Wind Turbine
- Access Road
- Power Line
- On-site Collector Substation
- Switching Station
- Balance of Plant Area

savannah
environmental





**Frontier Wind Farm,
Eastern Cape**
Environmental Sensitivity and
Development Footprint Map

Legend

- Regional Road
- Eskom Power Line (Existing)
- Perennial River
- - - Non-perennial River
- Development Envelope
- Project Site

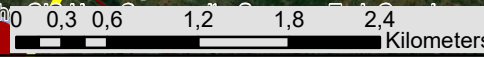
Layout Plan:

- Wind Turbine
- Access Road
- Power Line
- On-site Collector Substation
- Switching Station
- Balance of Plant Area

Environmental Sensitivity:

- Homestead (1000m Cultural Landscape Buffer)
- Historical Structure (500m Heritage No-Go Area)
- Grave (30m Heritage No-Go Area)
- Bat No-Go Areas for Turbines
- Martial Eagle Nest (2.5km Avifauna No-Go Area for turbines)
- Martial Eagle Nest (5km Avifauna Cautionary Buffer)
- Major Drainage (Very High Ecological Sensitivity - No-Go)
- Mountain Top (Very High Ecological Sensitivity - No-Go)
- Pan (Very High Ecological Sensitivity - No-Go)
- Pan (57m High Aquatic Sensitivity No-Go Buffer)
- Minor Drainage (High Ecological Sensitivity)
- Rocky Hills (High Ecological Sensitivity)
- Steep Slopes (High Ecological Sensitivity)
- Thicket (High Ecological Sensitivity)

Source: Esri, Maxar, GeoEye, Earthstar Geographics, CNES/Airbus DS, USDA, USGS, AeroGRID, IGN, and the
USGS, NPS



Fronteer Wind Farm, Eastern Cape

Optimised Development Footprint Map

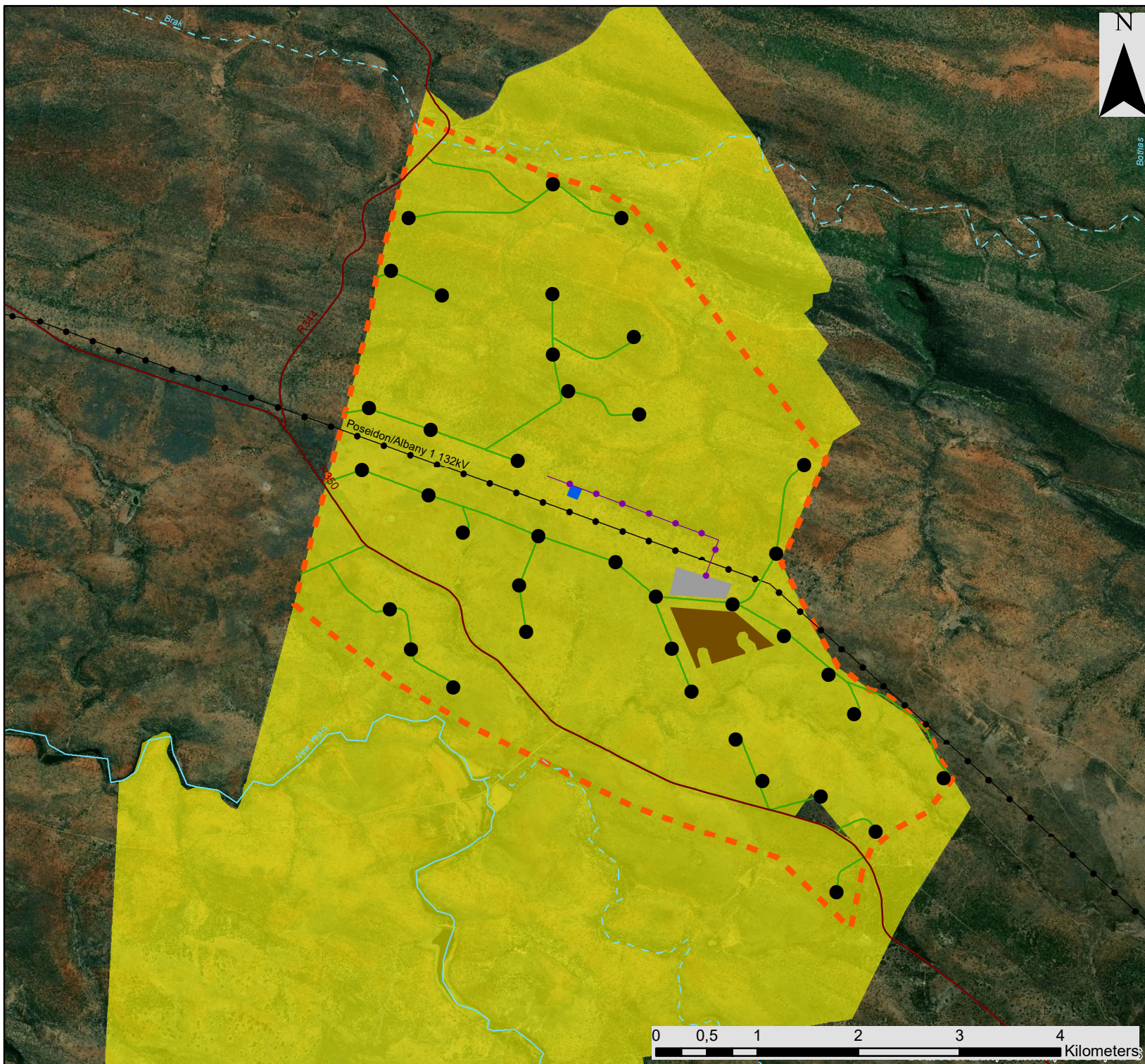
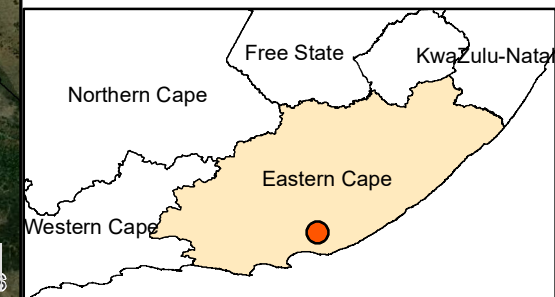
Legend

- Regional Road
- Eskom Power Line (Existing)
- Perennial River
- Non-perennial River
- Development Envelope
- Project Site

Layout Plan:

- Wind Turbine
- Access Road
- Power Line
- On-site Collector Substation
- Switching Station
- Balance of Plant Area

savannah
environmental





Fronteer Wind Farm, Eastern Cape

Environmental Sensitivity and Optimised Development Footprint Map

Legend

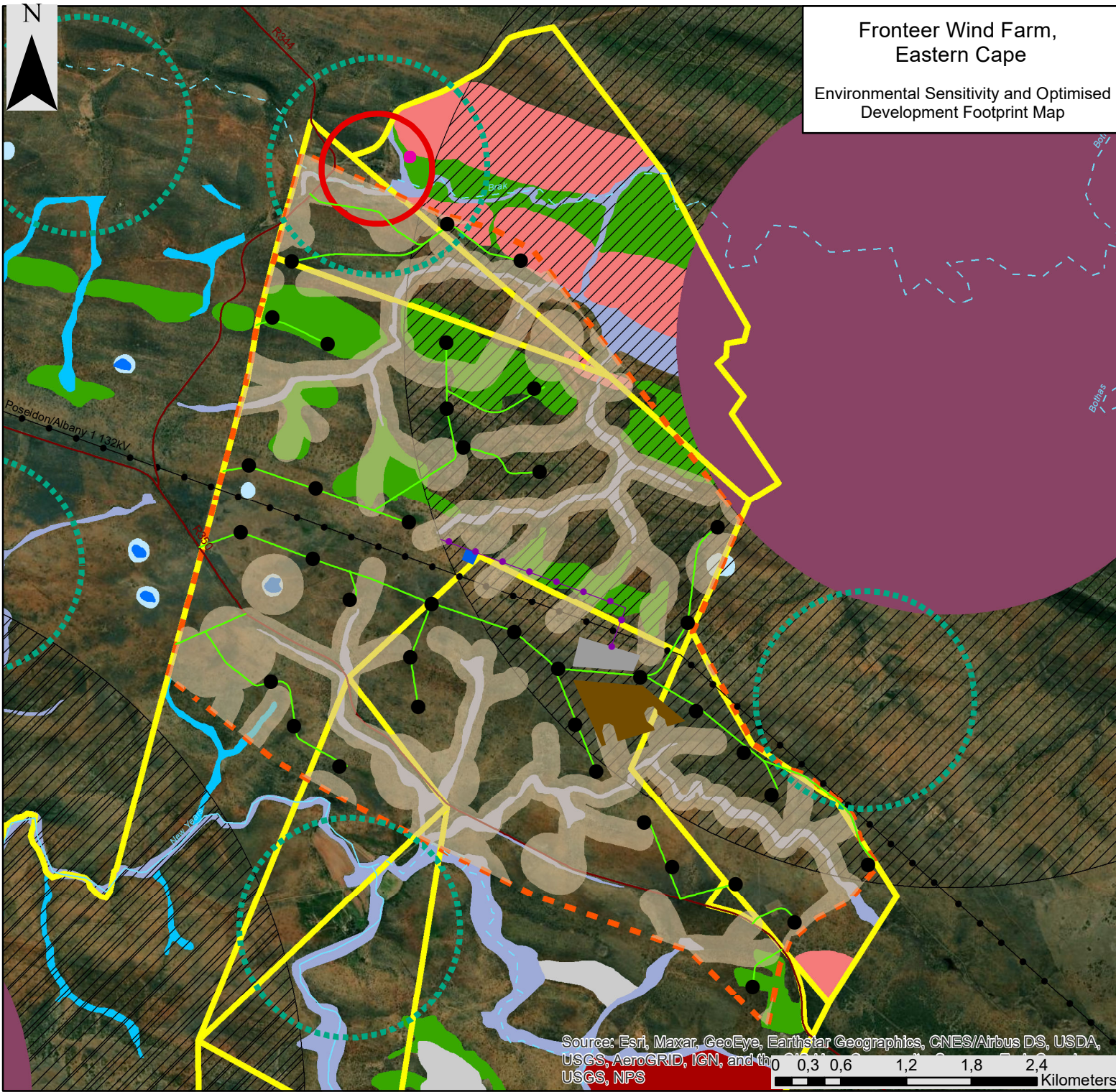
- Regional Road
- Eskom Power Line (Existing)
- Perennial River
- Non-perennial River
- Development Envelope
- Project Site

Layout Plan:

- Wind Turbine
- Access Road
- Power Line
- On-site Collector Substation
- Switching Station
- Balance of Plant Area

Environmental Sensitivity:

- Homestead (1000m Cultural Landscape Buffer)
- Historical Structure (500m Heritage No-Go Area)
- Grave (30m Heritage No-Go Area)
- Bat No-Go Areas for Turbines
- Martial Eagle Nest (2.5km Avifauna No-Go Area for turbines)
- Martial Eagle Nest (5km Avifauna Cautionary Buffer)
- Major Drainage (Very High Ecological Sensitivity - No-Go)
- Mountain Top (Very High Ecological Sensitivity - No-Go)
- Pan (Very High Ecological Sensitivity - No-Go)
- Pan (57m High Aquatic Sensitivity No-Go Buffer)
- Minor Drainage (High Ecological Sensitivity)
- Rocky Hills (High Ecological Sensitivity)
- Steep Slopes (High Ecological Sensitivity)
- Thicket (High Ecological Sensitivity)



Source: Esri, Maxar, GeoEye, Earthstar Geographics, CNES/Airbus DS, USDA, USGS, AeroGRID, IGN, and the
USGS, NPS

0,3 0,6 1,2 1,8 2,4
Kilometers