



SUSTAINABLE
FUTURES ZA

**P.O. Box 749 Rondebosch 7701 Cape Town South Africa
Tel: +27(0)833259965 Fax 0865102537
E-mail: swjohnston@mweb.co.za**

24 March 2014

Dear Sir / Madam

NOTICE OF RELEASE OF FINAL SCOPING REPORT: PROPOSED CONSTRUCTION, OPERATION AND DECOMMISSIONING OF THE SALDANHA REGIONAL MARINE OUTFALL PROJECT FOR FRONTIER SALDANHA UTILITIES (Pty) Ltd AT DANGER BAY NEAR SALDANHA IN THE WESTERN CAPE PROVINCE (DEA&DP Reference Number: 16/3/1/2/F4/17/3009/13)

You are hereby informed of the release of the Final Scoping Report (FSR) for comment for the proposed Saldanha Regional Marine Outfall (SRMO) Project at Danger Bay near Saldanha. **The FSR is released for 30 days from 24 March 2014 until 29 April 2014.**

Background:

Frontier Saldanha Utilities (Pty) Ltd (Frontier Utilities) is proposing the construction, operation and decommissioning of the SRMO Project. The SRMO Project will discharge approximately 8-9 MI of brine per day of treated effluent generated from the following three sources into Danger Bay:

- (i) a proposed Rare Earth Element Separation Plant by Frontier Separation Pty (Ltd) (Environmental Impact Assessment (EIA) undertaken by AGES, Application Ref No. 16/3/1/2/F4/17/3004/13);
- (ii) a proposed Chlor-Alkali Production Facility by Chlor-Alkali Holdings Pty (Ltd) (CAH) (EIA undertaken by MEGA, Application Ref No. 16/3/1/2/F4/17/3053/12); and
- (iii) a regional Waste Water Treatment Works (WWTW) proposed by the Saldanha Bay Municipality (EIA not yet commissioned).

Frontier Utilities has identified alternative terrestrial pipeline routes and various marine disposal pipeline routing alternatives for consideration and evaluation as per the Environmental Impact Assessment (EIA) Regulations. In the Draft Scoping Report, the 'Jacobsbaai Road Eastern Corridor' alternative represented the preferred electrical and pipeline corridor for the development as it followed a sandy, disturbed trench (previously used for agriculture) that would circumnavigate sensitive limestone strandveld mosaics.

In the West Coast District Municipality (WCDM) desalination plant EIA the 'Jacobsbaai Road Western Corridor' was determined to be a no-go area by the botanical specialist Nick Helme due to its botanical sensitivity, as it traverses a surface limestone area which is known to support at least 12 threatened plant species. The SRMOP Draft Scoping Report therefore did not include this corridor as an alternative pipeline routing option.

Subsequent to discussions between WorleyParsons (on behalf of the WCDM) and landowners along the Jacobsbaai Eastern Corridor it has emerged that certain

landowners will not be amiable to negotiate the potential for registering a servitude over their properties. The WCDM (as the project proponent) has no option but to find an alternative corridor route around these erven. In light of this and following discussions with the WCDM and botanical specialist Nick Helme, it was decided that the 'Jacobsbaai Road Western Corridor' should be re-evaluated as a potential alternative in light of the fact that the proposed 'Jacobsbaai Road Eastern Corridor' has proven technically unfeasible. The Jacobsbaai Road Western Corridor will be re-evaluated as part of the WCDM EA Amendment Application to DEA&DP, however, this EA Amendment Application has not yet been submitted to the department and the status of its authorisation is not known at this stage.

As the 'Jacobsbaai Road Eastern Corridor' and 'Afrisam Corridor' have proved unfeasible, during the EIA for the WCDM desalination plant, the botanical specialist has agreed to reconsider the no-go status on the 'Jacobsbaai Road Western Corridor' as part of the proposed EA Amendment.

In light of this, an additional alternative, the Jacobsbaai Western Corridor, is included in this Final Scoping Report (see Figure 1). Frontier Utilities and the WCDM wish to have their pipelines within the same corridor for environmental and technical reasons.

In terms of the EIA Regulations published in terms of Section 24(5) of the National Environmental Management Act (NEMA, Act No. 107 of 1998), projects require authorisation from the Western Cape Department of Environmental Affairs and Development Planning (DEA&DP). In terms of sections 24 and 24D of NEMA, as read with the EIA Regulations published in Government Notices R543, 544, 545 and 546 on 18 June 2010, a full Scoping and EIA process are required.

Frontier Utilities has appointed the CSIR as the independent Environmental Assessment Practitioner to undertake the Scoping and the EIA processes to identify and assess the potential environmental impacts associated with the proposed project, and to propose appropriate mitigation and management measures within the framework of an Environmental Management Plan (EMP). **Sustainable Futures ZA** is managing the public participation process for the EIA.

The outcomes of the EIA process will be used by the authorities to reach a decision on whether or not to grant environmental authorization for the proposed project, and if so, under what conditions.

Final Scoping Report Availability

Please find below a list of venues and the website where the FSR will be available for review and download. The FSR will be available at the:

- **Saldanha Bay Public Library;**
- **Louwville Public Library;**
- **Office of the Jacobsbaai Ratepayers and Residents Association; and the**
- **Project Web site: [www.csir.co.za/eia/frontier marine outfall pipeline.html](http://www.csir.co.za/eia/frontier_marine_outfall_pipeline.html)**

As registered Interested and Affected Parties, you and/or the organisation/department whom you represent now have the opportunity to review and comment on the FSR.

Please ensure your issues/comments and submissions reach **Sustainable Futures ZA** by **29 April 2014 for inclusion into the comments and issues report of the Draft EIR Report.**

Comments can be made as written submissions via fax, post or e-mail.

Please submit your comments to

Shawn Johnston of Sustainable Futures ZA

PO Box 749, Rondebosch, Cape Town, 7701

Fax: 086 510 2537

E-mail: swjohnston@mweb.co.za

Web site : www.csir.co.za/eia/frontier_marine_outfall_pipeline.html

Yours sincerely,
Shawn Johnston
Process Facilitator

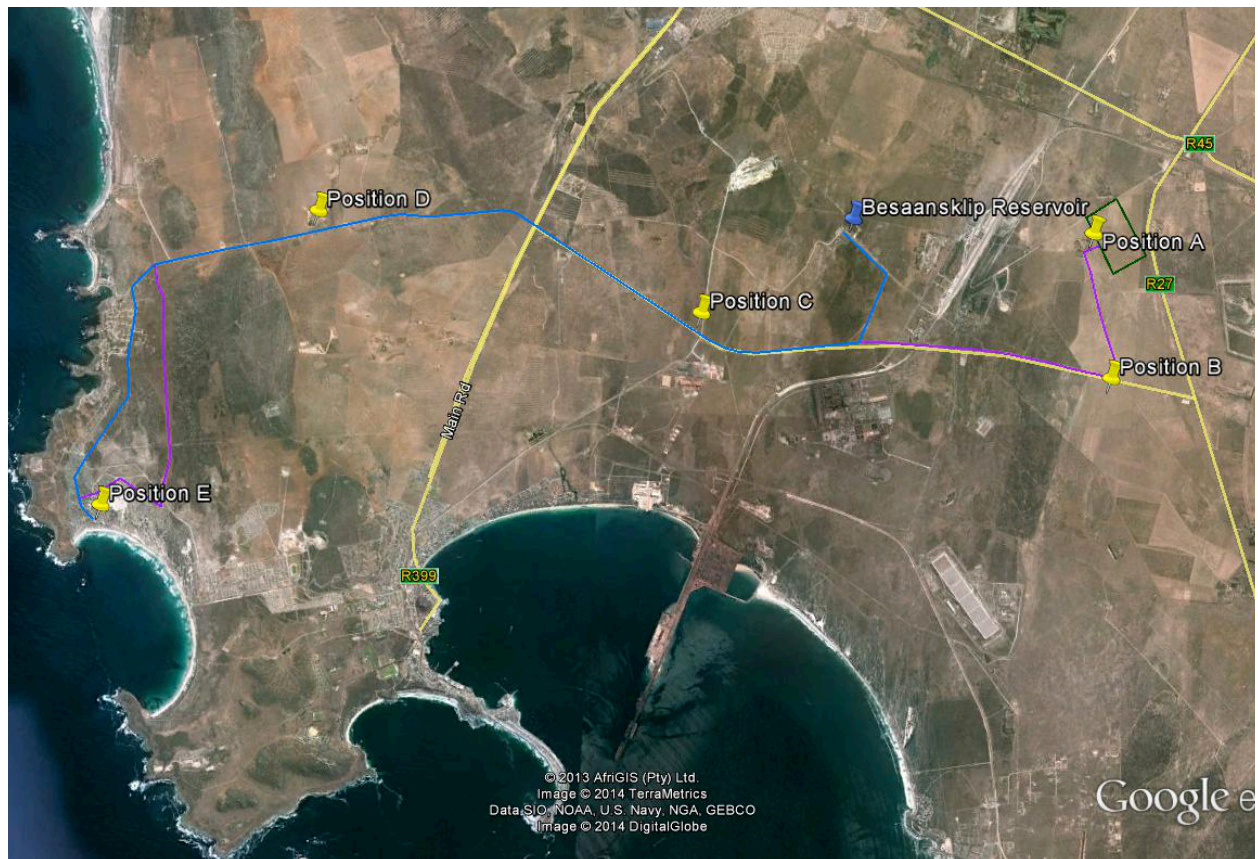


Figure 1 Proposed Saldanha Regional Marine Outfall Pipeline Terrestrial Routing

Legend: Position A (32° 57' 15.19" S 18° 04' 05.03" E)=SSP and CAPF; Position B (32° 58' 24.1" S 18° 04' 18.67 E)=WWTW; Position C (32° 58' 07.86" S 17° 59' 43.89" E) = transfer pump station; Position D (32° 57' 14.58" S 17° 55' 44.92" E) = Vodacom substation; Position E (33° 00' 06.36" S 17° 53' 03.16" E) = Proposed WCDM desalination plant