

**Mercury Cluster Project:
Kleinfontein Solar PV1 (120MW)**
(on Portion 1 of the Farm Kleinfontein No 369, Free State Province)

Proof of Placement of Onsite Advertisement

Onsite Notice

NOTIFICATION OF AN ENVIRONMENTAL IMPACT ASSESSMENT PROCESS

Notice is given, in terms of the **NATIONAL ENVIRONMENTAL MANAGEMENT ACT (Act No 107 of 1998)** and the **2014 EIA Regulations**, as amended, that fourteen applications for Environmental Authorisation are lodged with the Department of Forestry, Fisheries and the Environment (DFFE).

Mercury Cluster Solar PV Project

Solar Farms	Grid Connections	Applicants
100MW Vlakfontein Solar PV1	Vlakfontein Solar PV1 Grid Connection	Vlakfontein Solar PV1 (Pty) Ltd
100MW Biesiefontein Solar PV1	Biesiefontein Solar PV1 Grid Connection	Biesiefontein Solar PV1 (Pty) Ltd
100MW Zaaiplaats Solar PV1	Zaaiplaats Solar PV1 Grid Connection	Zaaiplaats Solar PV1 (Pty) Ltd
100MW Hormah Solar PV1	Hormah Solar PV1 Grid Connection	Hormah Solar PV1 (Pty) Ltd
100MW Kleinfontein Solar PV1	Kleinfontein Solar PV1 Grid Connection	Kleinfontein Solar PV1 (Pty) Ltd
100MW Ratpan Solar PV1	Ratpan Solar PV1 Grid Connection	Ratpan Solar PV1 (Pty) Ltd
75MW Ratpan Solar PV2	Ratpan Solar PV2 Grid Connection	Ratpan Solar PV2 (Pty) Ltd

Projects components could potentially include the following – to be confirmed for each separate application :

- Solar PV Farm
- 132kV Grid Connections with switching station/substations for each PV facility
- Battery Energy Storage Systems (BESS)
- Diesel storage facility of less than 500m³
- Auxiliary Generator Set (GENSET)
- Laydown area for the construction period
- Operational & Maintenance Buildings
- Additional infrastructure (Access Roads - new and/or upgrade; stormwater; water pipelines, etc.)

Listed Activities: (This list of activities could be amended during the course of the investigations and relevance will be confirmed for each application)

Listing Notice 1 (GN R 983): Activities Numbers 11; 12; 14; 19; 24; 27; and 28)

Listing Notice 2 (GN R984: Activity Numbers 1; 4; 14; and 15)

Listing Notice 3(GN 985: Activity Numbers 4; 10; 12; 14; 18; 23)

Additional Relevant Legislation

- Water Use Authorisation issued by the Department of Water & Sanitation will be required in terms of the **National Water Act, 1998 (Act Nr 36 of 1998)**. Section 21(c) 'impeding or diverting the flow of water in a watercourse' and Section 21(i) 'altering the beds, banks, course or characteristics of a watercourse' could be applicable. The relevant applications for Water Use Authorisation will be made with the Department of Water & Sanitation (DWS).
- The **National Heritage Resources Act, 1999 (Act No 25 of 1999)** is triggered and relevant applications will be made with the South African Heritage Resources Authority (SAHRA).
- The **Subdivision of Agricultural Land Act (Act 70 of 1970)** is triggered and relevant applications will be made to the Department of Agriculture, Land Reform and Rural Development (DALRRD)

Project Locality

The project sites are located north and south of the R76, south of the Vaal River and between Parys and Vijoenskroon in the Free State Province. It falls entirely in the Klerksdorp Renewable Energy Development Zone (REDZs) as well as the Central Strategic Transmission Corridor (STC).

You are invited to register as an Interested and/or Affected Party (I&AP). Please submit your name, contact information and interest in, or objection to the matter to the environmental consultants within 30 days from the date of this notice.

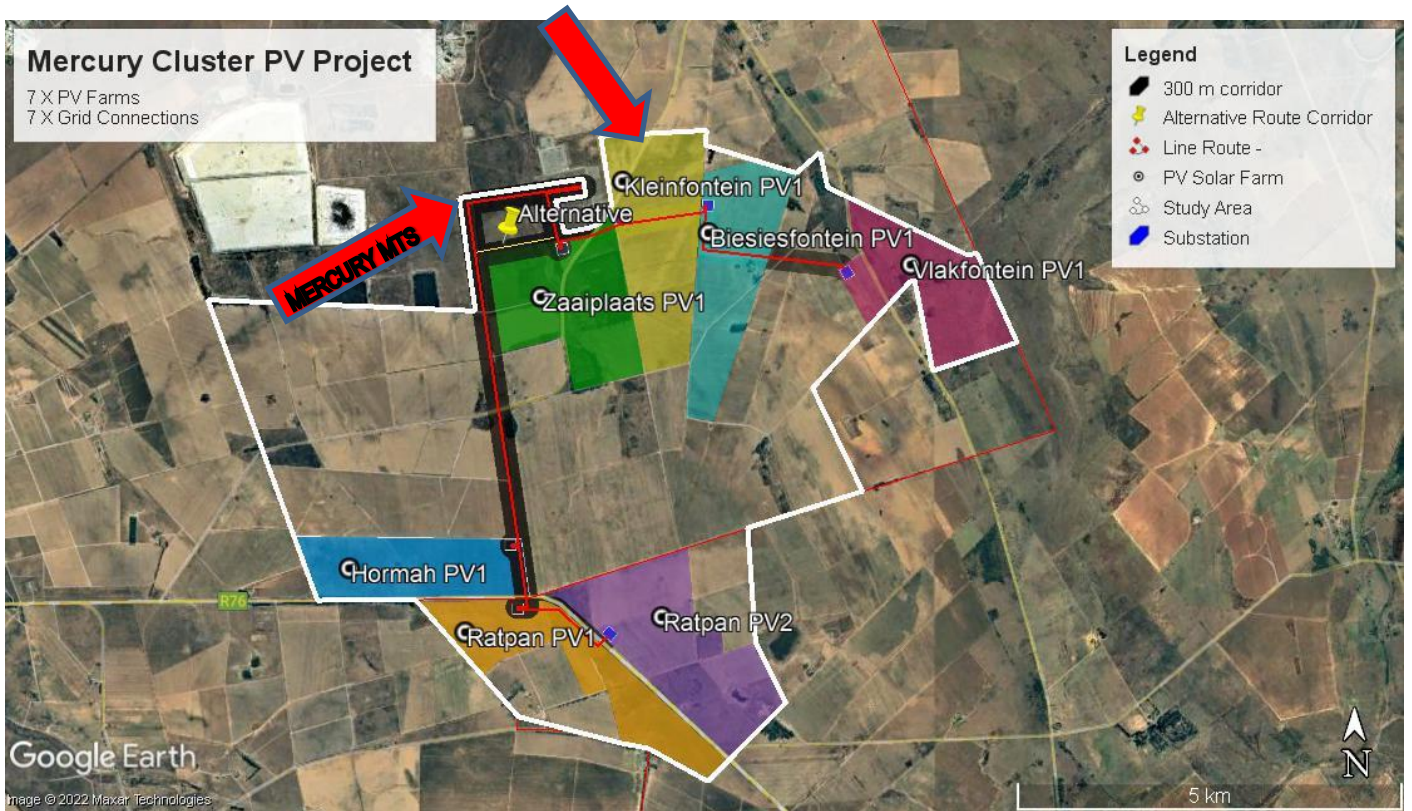
Contact details for **Landscape Dynamics Environmental Consultants:**

E-mail: info@landscapedynamics.co.za; Enquiries: Annelize Erasmus: Tel 082 566 4530; Susanna Nel: Tel 082 888 4060



Date of Placement of Onsite Notice: 22 March 2022

Mercury Cluster Project Map – 7 X PV facilities were initially advertised, but these were changed to 5 sites due to environmental restrictions and associated feasibility



Placement along the gravel road (from which the facility will be accessed) that connects the R76 and the S643





Placement at the gate of the Viljoenskroon Post Office



Placement at the Mercury Main Transmission Substation

