

# Sibanye WRTRP EIA

## Vegetation Types

- Vegetation Types**  
Mucina & Rutherford, 2006
- Andesite Mountain Bushveld
  - Carletonville Dolomite Grassland
  - Eastern Temperate Freshwater Wetlands
  - Gauteng Shale Mountain Bushveld
  - Gold Reef Mountain Bushveld
  - Rand Highveld Grassland
  - Soweto Highveld Grassland
  - Tsakane Clay Grassland

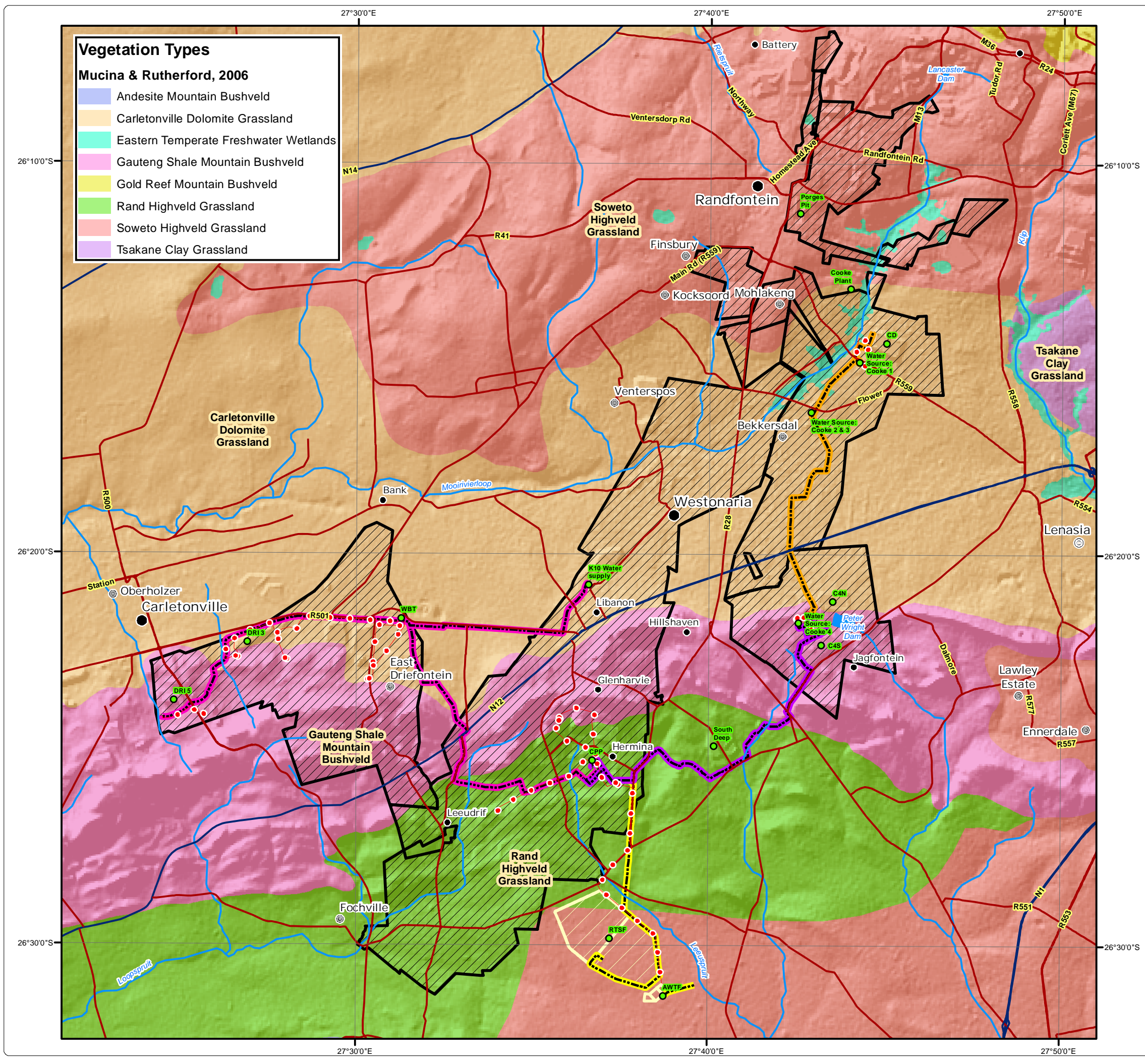
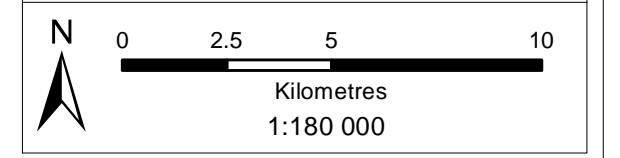
### Legend

- Major Town
- ⊙ Secondary Town
- ⊙ Other Town
- Settlement
- Main Roads
- National Roads
- River
- Dam
- Infrastructure Point
- Powerlines
- Pipelines: Kloof Mining Right
- Pipelines: Driefontein Mining Right
- Pipelines: Cooke Mining Right
- Pipelines: Ezulwini Mining Right
- Regional Tailings Storage Facility
- ▨ Mining Right Boundary



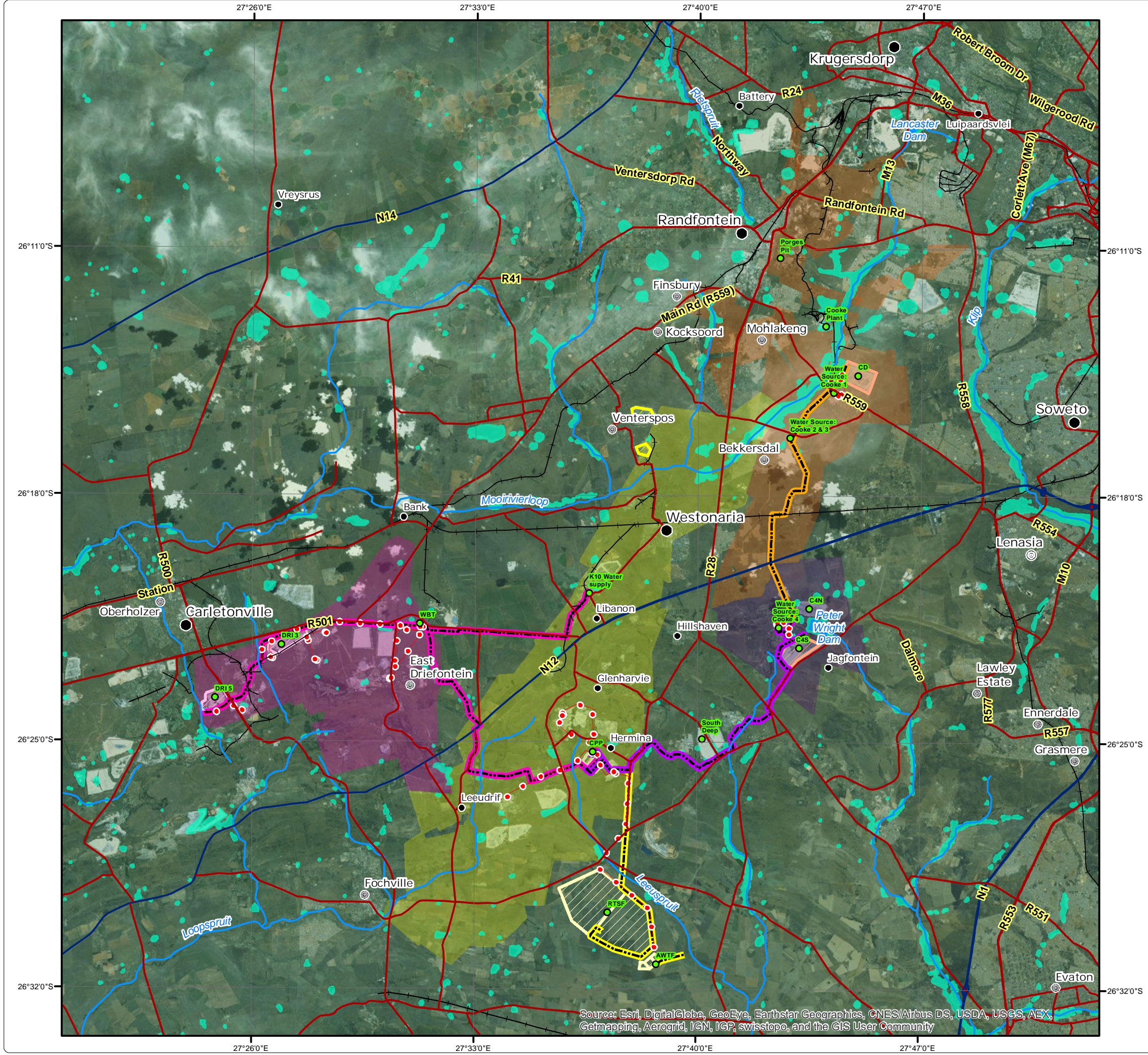
• Sustainability • Service • Positive Change • Professionalism • Future Focused • Integrity

Projection: Transverse Mercator Ref #: sdp.GOL2376.201508.208  
 Datum: WGS 1984 Revision Number: 3  
 Central Meridian: 27°E Date: 07/12/2015



# Sibanye WRTRP EIA

## NFEPA Wetlands



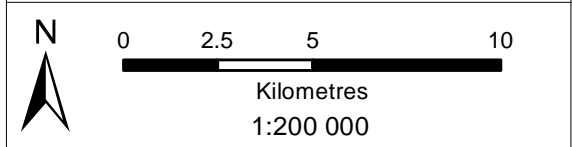
### Legend

- Major Town
  - ⊙ Secondary Town
  - ⊙ Other Town
  - Settlement
  - Main Roads
  - National Roads
  - Railway Line
  - River
  - Dam
  - NFEPA Wetlands
- ### Infrastructure
- Infrastructure Point
  - Powerlines
  - Pipelines: Kooie Mining Right
  - Pipelines: Driefontein Mining Right
  - Pipelines: Cooke Mining Right
  - Pipelines: Ezulwini Mining Right
  - CPP and Future Uranium Plant
  - Regional Tailings Storage Facility
  - TSF within Kooie Mining Right
  - TSF within Driefontein Mining Right
  - TSF within Cooke Mining Right
  - Kooie Mining Right
  - Driefontein Mining Right
  - Cooke Mining Right
  - Ezulwini Mining Right



• Sustainability • Service • Positive Change • Professionalism • Future Focused • Integrity














Projection: Transverse Mercator Ref #: sdp.GOL2376.201503.048  
 Datum: WGS 1984 Revision Number: 1  
 Central Meridian: 27°E Date: 07/12/2015

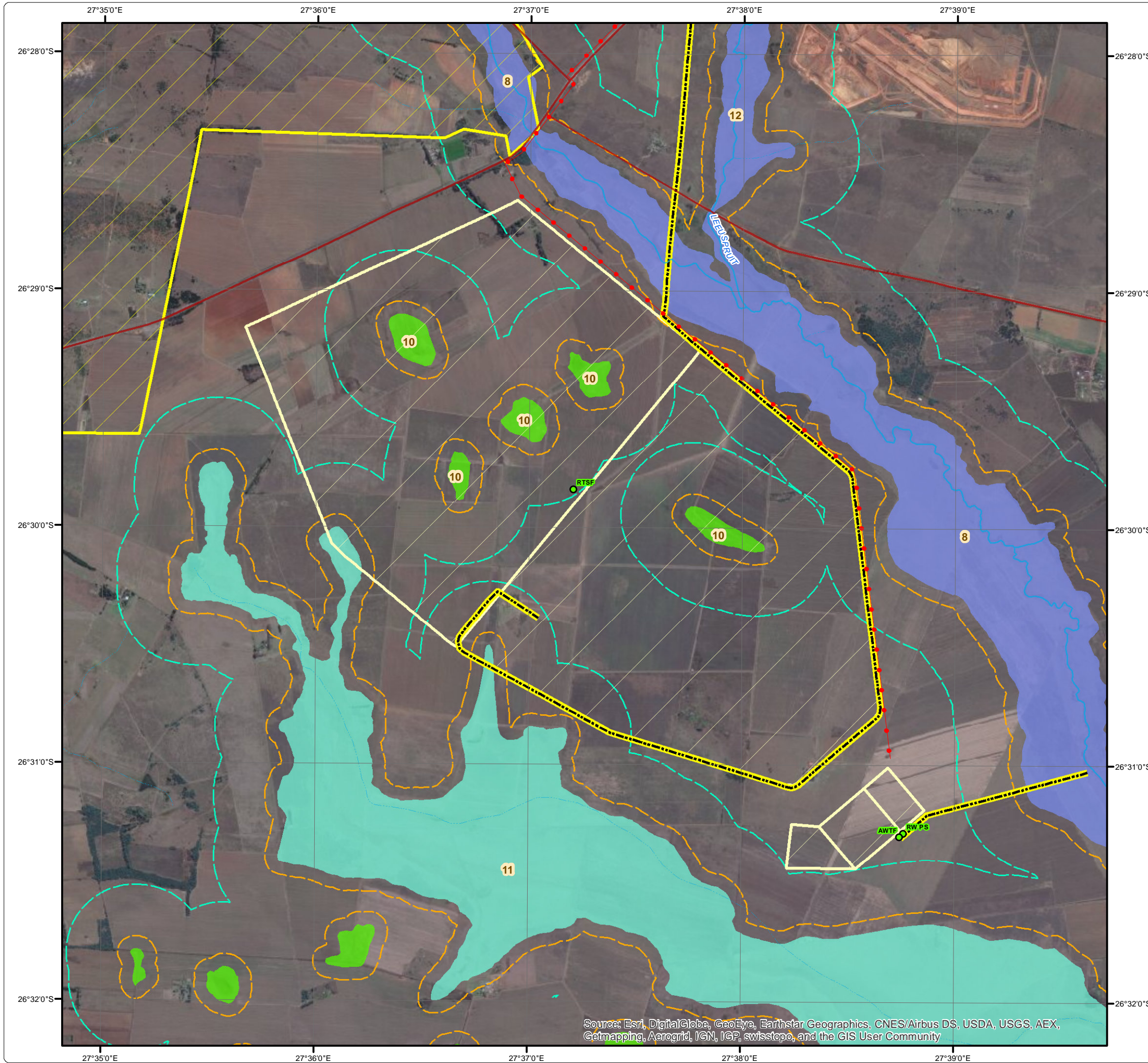


Source: Esri, DigitalGlobe, GeoEye, Earthstar Geographics, CNES/Airbus DS, USDA, USGS, AEX, Getmapping, Aerogrid, IGN, IGP, swisstopo, and the GIS User Community

# Sibanye WRTRP EIA RTSF Footprint and Wetland Delineation

## Legend

-  Main Road
-  Perennial Stream
-  Non-Perennial Stream
- Infrastructure**
-  Infrastructure Point
-  Powerlines
-  Pipelines: Kloof Mining Right
-  Regional Tailings Storage Facility
-  Kloof Mining Right
- Wetland Delineation**
-  Channelled Valley Bottom
-  Pan
-  Valley Bottom
-  100m Wetland Buffer
-  500m Wetland Buffer



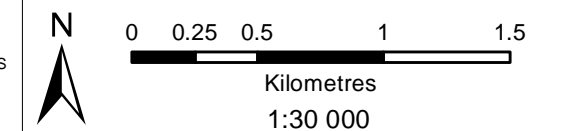
Source: Esri, DigitalGlobe, GeoEye, Earthstar Geographics, CNES/Airbus DS, USDA, USGS, AEX, Getmapping, Aerogrid, IGN, IGP, swisstopo, and the GIS User Community



**DIGBY WELLS**  
ENVIRONMENTAL

• Sustainability • Service • Positive Change • Professionalism • Future Focused • Integrity

Projection: Transverse Mercator      Ref #: sdp.GOL2376.201505.158  
 Datum: WGS 1984                              Revision Number: 1  
 Central Meridian: 27°E                        Date: 22/12/2015

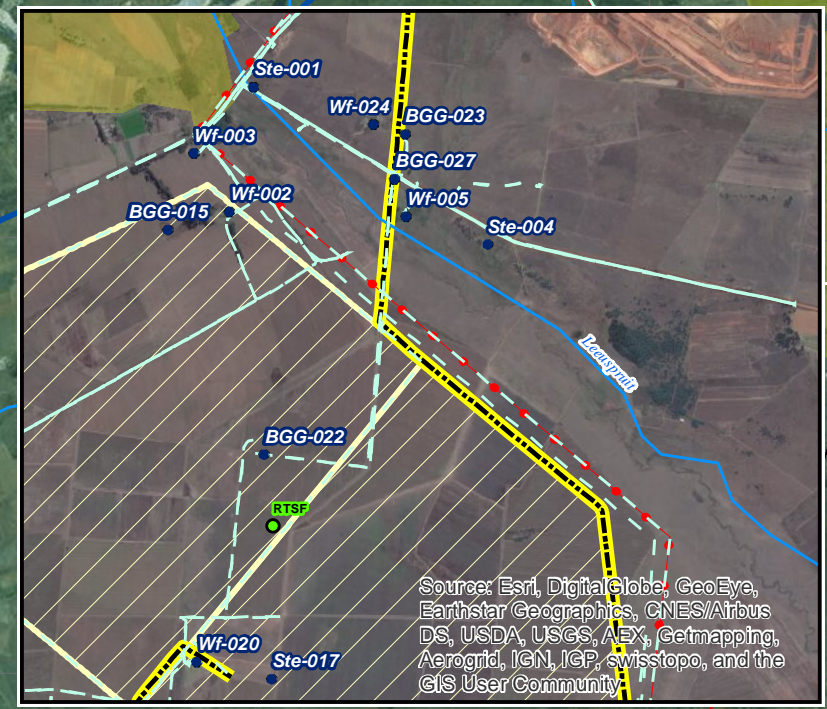
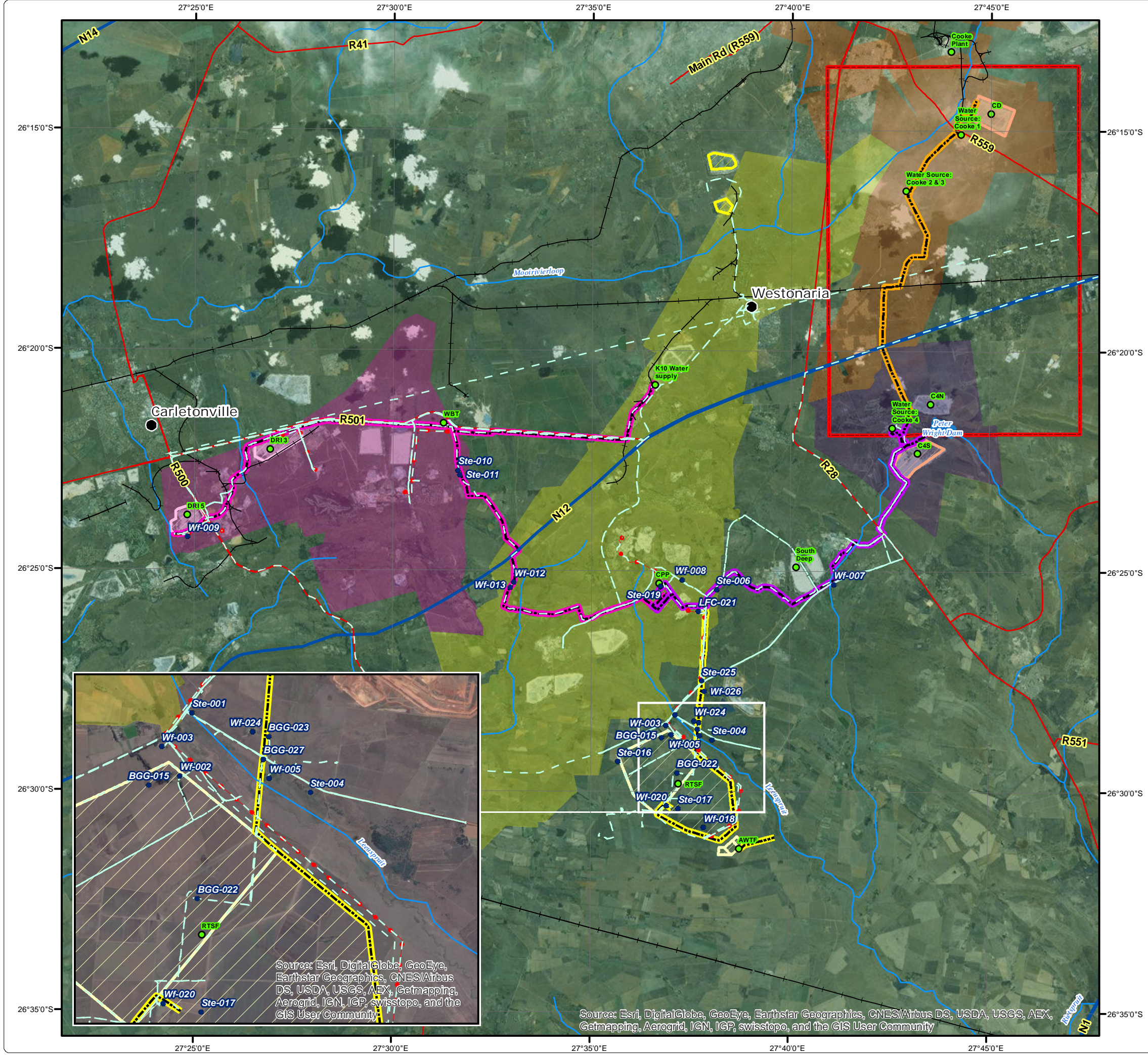


# Sibanye WRTRP EIA

## Identified Heritage Sites

### Legend

- Major Town
- Main Roads
- National Roads
- Railway Line
- River
- Dam
- Identified Heritage Resources**
  - Heritage Site
  - Heritage Tracks
  - Area Excluded from Study
- Infrastructure**
  - Infrastructure Point
  - Powerlines
  - Pipelines: Kloof Mining Right
  - Pipelines: Driefontein Mining Right
  - Pipelines: Cooke Mining Right
  - Pipelines: Ezulwini Mining Right
  - Regional Tailings Storage Facility
  - TSF within Kloof Mining Right
  - TSF within Driefontein Mining Right
  - TSF within Cooke Mining Right
  - Kloof Mining Right
  - Driefontein Mining Right
  - Cooke Mining Right
  - Ezulwini Mining Right

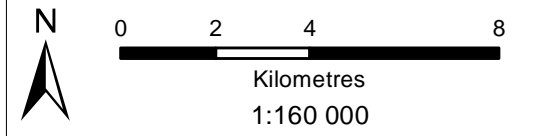


Source: Esri, DigitalGlobe, GeoEye, Earthstar Geographics, CNES/Airbus DS, USDA, USGS, AEX, Getmapping, Aerogrid, IGN, IGP, swisstopo, and the GIS User Community

Source: Esri, DigitalGlobe, GeoEye, Earthstar Geographics, CNES/Airbus DS, USDA, USGS, AEX, Getmapping, Aerogrid, IGN, IGP, swisstopo, and the GIS User Community

• Sustainability • Service • Positive Change • Professionalism • Future Focused • Integrity

Projection: Transverse Mercator Ref #: sdp.GOL2376.201507.088  
 Datum: WGS 1984 Revision Number: 1  
 Central Meridian: 27°E Date: 07/12/2015

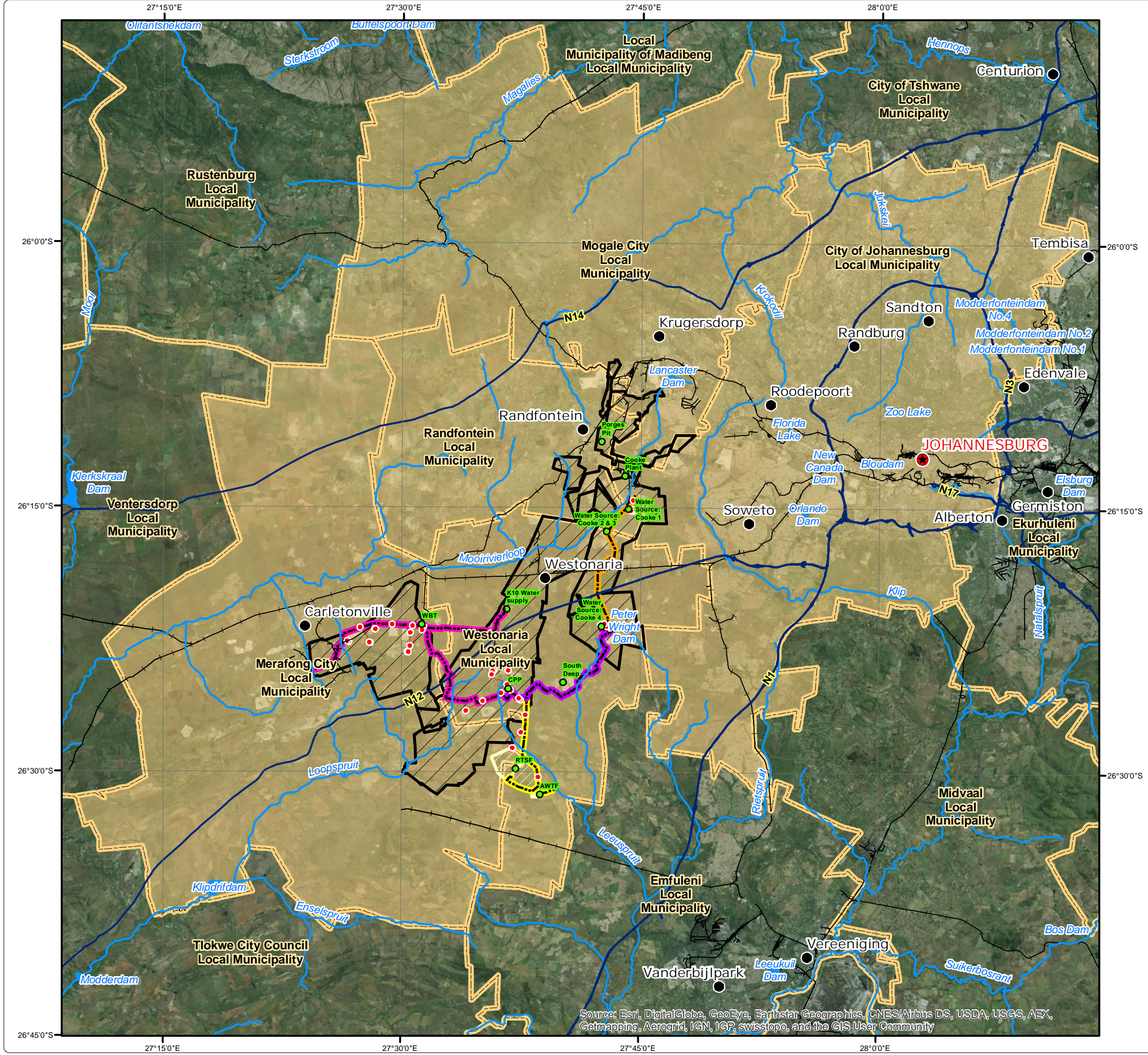


# Sibanye WRTRP EIA


## Local Municipalities

### Legend

- Capital City
  - Major Town
  - River\_Labels
  - National Roads
  - Railway Line
  - River
  - Dam
  - Local Municipal Boundary
  - Affected Local Municipality
- ### Infrastructure
- Infrastructure Point
  - Powerlines
  - Pipelines: Kloof Mining Right
  - Pipelines: Driefontein Mining Right
  - Pipelines: Cooke Mining Right
  - Pipelines: Ezulwini Mining Right
  - Regional Tailings Storage Facility
  - Mining Right Boundary



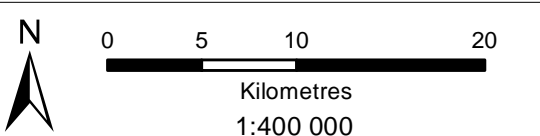
Source: Esri, DigitalGlobe, GeoEye, Earthstar Geographics, CNES/Airbus DS, USDA, USGS, AEX, Getmapping, Aerogrid, IGN, IGP, swisstopo, and the GIS User Community



**DIGBY WELLS**  
ENVIRONMENTAL

• Sustainability • Service • Positive Change • Professionalism • Future Focused • Integrity

Projection: Transverse Mercator	Ref #: sdp.GOL2376.201502.036
Datum: WGS 1984	Revision Number: 3
Central Meridian: 27°E	Date: 22/12/2015



Kilometres  
1:400 000

[www.digbywells.com](http://www.digbywells.com) © Digby Wells Environmental

# Sibanye WRTRP EIA Cooke MRA Infrastructure

## Legend

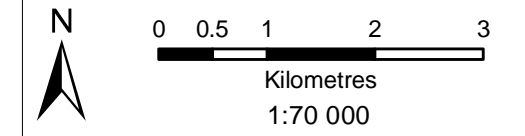
- Major Town
- ⊙ Other Town
- Settlement
- Arterial / National Route
- Main Road
- Minor Road
- Railway Line
- Non-Perennial Stream
- Perennial Stream
- Dam Wall
- Dam / Lake
- Perennial Pan
- Non-Perennial Pan
- Wetland
- Infrastructure Point
- Powerlines
- Pipelines: Cooke Mining Right
- TSF within Cooke Mining Right
- TSF Infrastructure
- Cooke Mining Right

## Infrastructure

**DIGBY WELLS ENVIRONMENTAL**

• Sustainability • Service • Positive Change • Professionalism • Future Focused • Integrity

Projection: Transverse Mercator Ref #: sdp.GOL2376.201508.013  
 Datum: WGS 1984 Revision Number: 1  
 Central Meridian: 27°E Date: 07/12/2015



Source: Esri, DigitalGlobe, GeoEye, Earthstar Geographics, CNES/Airbus DS, USDA, USGS, AEX, Getmapping, Aerogrid, IGN, IGP, swisstopo, and the GIS User Community