

# Sibanye WRTRP EIA

## Composite Map

### Legend

- Other Town
- Settlement
- Arterial / National Route
- Main Road
- Minor Road
- Railway Line
- - - Non-Perennial Stream
- Perennial Stream

### Infrastructure

- Infrastructure Point
- CPP and Uranium Plant Footprint
- Regional Tailings Storage Facility

### Identified Heritage Resources

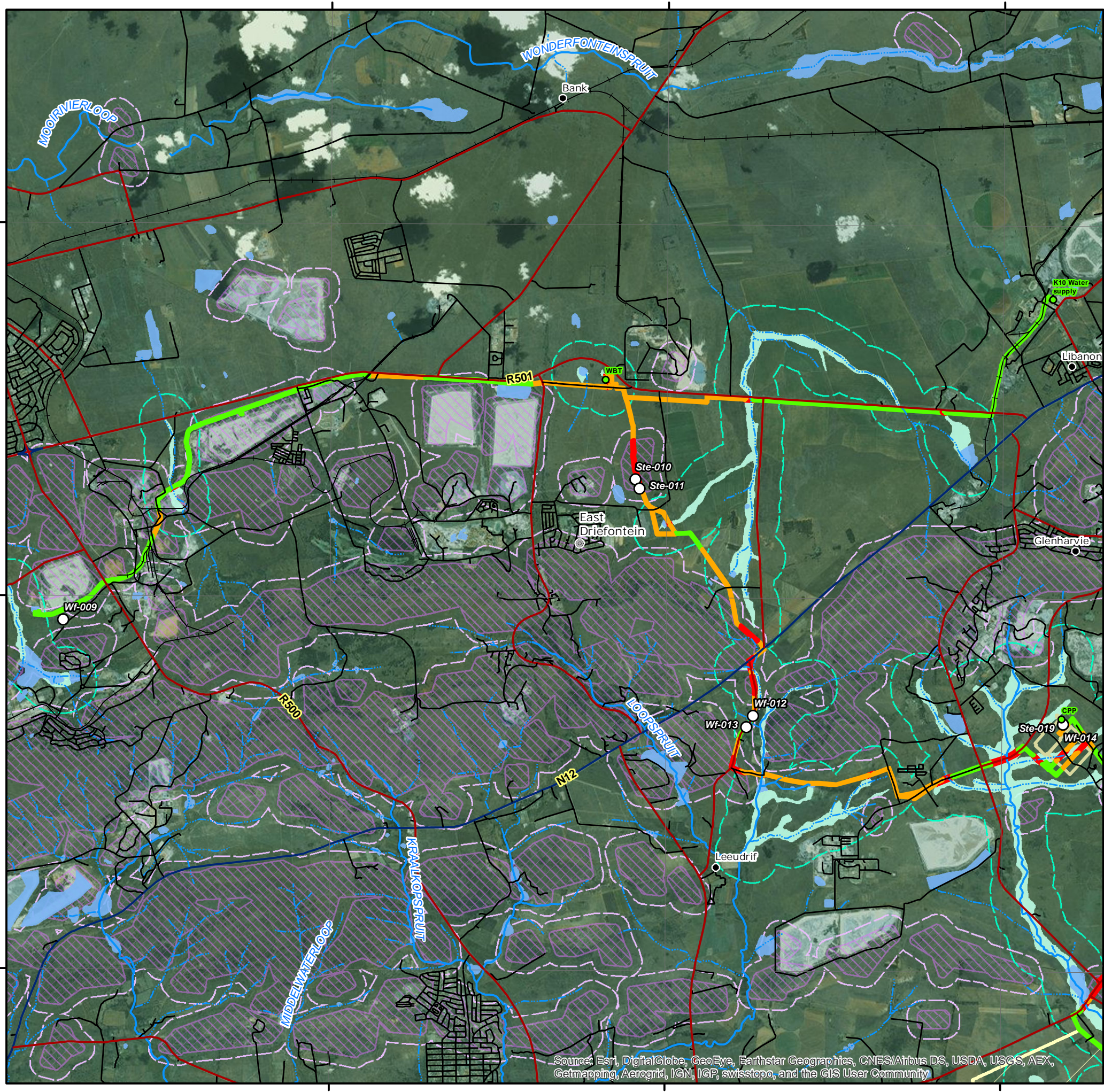
- Heritage Site

### Vegetation Sensitivity

- High
- Medium - High
- Low
- ▨ Ridge (High Sensitivity)
- ▨ 200m Ridge Buffer (Medium-High Sensitivity)

### Wetland Delineation

- NFEPA Wetlands
- Wetland Delineation (High Sensitivity)
- ▨ 500m Delineated Wetland Buffer (Medium Sensitivity)



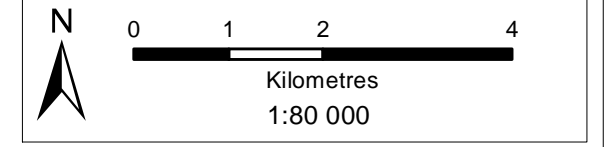
Source: Esri, DigitalGlobe, GeoEye, Earthstar Geographics, CNES/Airbus DS, USDA, USGS, AEX, Getmapping, Aerogrid, IGN, IGP, swisstopo, and the GIS User Community



**DIGBY WELLS**  
ENVIRONMENTAL

• Sustainability • Service • Positive Change • Professionalism • Future Focused • Integrity

Projection: Transverse Mercator Ref #: meg.GOL2376.201512.024  
 Datum: WGS 1984 Revision Number: 3  
 Central Meridian: 27°E Date: 08/12/2015

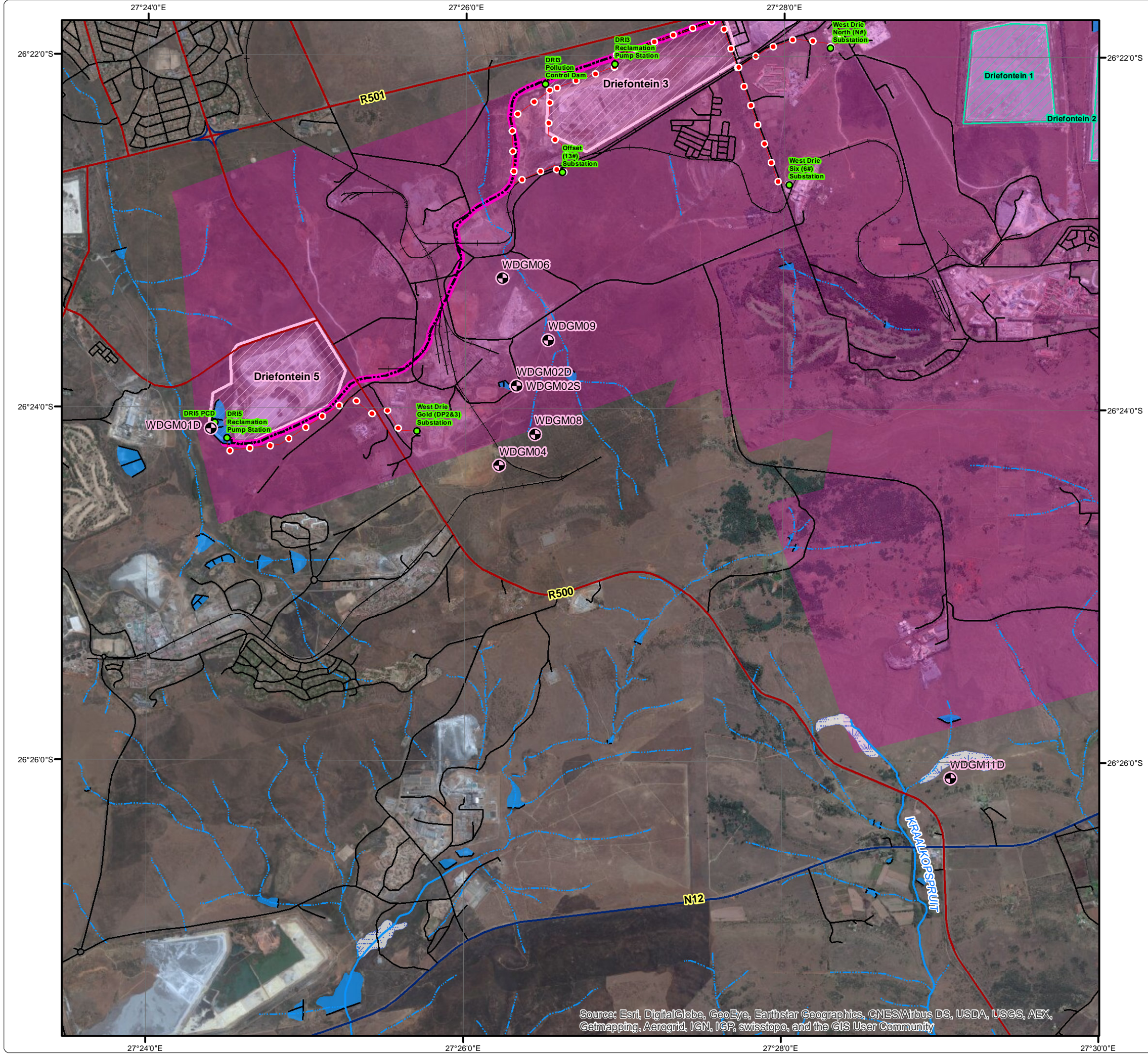




# Sibanye WRTRP EIA Driefontein Monitoring Boreholes

## Legend

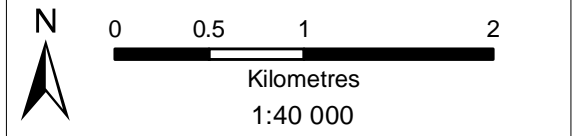
- Driefontein Monitoring Borehole
  - Arterial / National Route
  - Main Road
  - Minor Road
  - Railway Line
  - Non-Perennial Stream
  - Perennial Stream
  - Dam Wall
  - Dam / Lake
  - Wetland
- ### Infrastructure
- Infrastructure Point
  - Powerlines
  - Pipelines: Driefontein Mining Right
  - TSF within Driefontein Mining Right
  - TSF Infrastructure
  - Driefontein Mining Right



**DIGBY WELLS**  
ENVIRONMENTAL

• Sustainability • Service • Positive Change • Professionalism • Future Focused • Integrity

Projection: Transverse Mercator      Ref #: meg.GOL2376.201511.183  
 Datum: WGS 1984      Revision Number: 1  
 Central Meridian: 27°E      Date: 07/12/2015



Source: Esri, DigitalGlobe, GeoEye, Earthstar Geographics, CNES/Airbus DS, USDA, USGS, AEX, Getmapping, Aerogrid, IGN, IGP, swisstopo, and the GIS User Community