

Sibanye WRTRP EIA

CPP Location

Legend

- Settlement
 - Arterial / National Route
 - Main Road
 - Minor Road
 - +— Railway Line
 - Non-Perennial Stream
 - Perennial Stream
 - Dam Wall
 - Dam / Lake
 - Perennial Pan
 - Non-Perennial Pan
 - Wetland
- ### Infrastructure
- Infrastructure Point
 - Powerlines
 - Pipelines: Kloof Mining Right
 - CPP and Future Uranium Plant
 - Regional Tailings Storage Facility
 - TSF Infrastructure
 - Kloof Mining Right

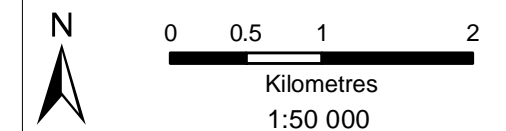


Source: Esri, DigitalGlobe, GeoEye, Earthstar Geographics, CNES/Airbus DS, USDA, USGS, AEX, Getmapping, Aerogrid, IGN, IGP, swisstopo, and the GIS User Community



• Sustainability • Service • Positive Change • Professionalism • Future Focused • Integrity




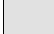
Projection: Transverse Mercator Ref #: sdp.GOL2376.201508.198
 Datum: WGS 1984 Revision Number: 3
 Central Meridian: 27°E Date: 07/12/2015



Sibanye WRTRP EIA

CPP Layout

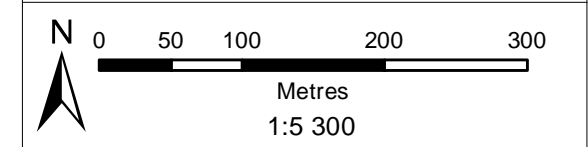
Legend

-  Main Road
-  Minor Road
-  CPP Infrastructure Lines
-  CPP Infrastructure Polygons

Infrastructure	Label	Infrastructure	Label
Sulphide Flotation Feed (Plant Feed)	1	Cooke Rougher Flotation/pH Adjustment	47
Sulphate Flotation	2	Cooke Uranium Rip Effluent	48
Oxide Flotation	3	Elution Wash Clarifier Effluent	49
Ultra Fine Grinding (Milling)	4	Cooke Uranium Tailings Thickener	50
Sulphide	5	Cooke Uranium SX	51
Oxide Concentrate Thickener	6	Central Uranium Leach Plant - 1	52
Carbon in Leach (Oil)	7	Central Uranium pH Adjust - 1	53
Cyanide Detox	8	Central Uranium Rip - 1	54
CI Dewatering	9	Central Uranium Leach Plant - 2	55
Acid Wash, Elution and Regeneration	10	Central Uranium pH Adjust - 2	56
Tailings Thickener	11	Central Uranium Rip - 2	57
Water Services	12	Central Uranium Rip Elution - 2	58
Plant Run-Off	13	Central Uranium SX	59
Process Water Run-Off Dam	14	Central Uranium Adu Plant	60
Air Services	15	Adu Calcining Plant	61
Gold Room	16	Roaster Plant	62
Med, Eng Offices and Lab	17	Sulphuric Acid Storage Tanks	63
Sulphide Flotation Run-Off Dam	18	SX Fire Water	64
Oxide Flotation Run-Off Dam	19	U Raw/Potable Water Storage Tanks	65
MCC and Control Room	20	Cooke Flotation Blowers	66
AU Workshop	21	Air Services U Plant	67
Main Stores	22	Boiler	68
Floculant Plant	23	Diesel Storage Area (U-Plant)	69
Diesel Off Loading and Storage	24	Xanthate and Frother Plant	70
Cyanide Off Loading and Storage	25	Depressant Make-Up System	71
Caustic Off Loading and Storage	26	Ammonia Storage	72
Hydrochloric Acid Off Loading and Storage	27	Security and Change House - U	73
Copper Sulphide Off Loading and Storage	28	Workshop - U	74
Lime Off Loading and Storage	29	Chop House - U	75
SMBS Storage and Make-Up	30	Control Room - U	76
Flotation Regents	31	Met and Engineering Offices - U	77
Weigh Bridge	32	Lab - U	78
Security and Change House	33	Central U Plant Sub	79
Admin Building and Parking	34	Cooke U Plant Sub	80
Equipment Off Loading (Airlock)	35	Medical Station U Plant	81
Heli Pad	36	Acid Storage Weighbridge	82
Temporary Parking	37	Acid Plant	83
MCC	38	Pyrite Dam	84
Plant Entrance	39	U Event Dam	85
Sewerage Plant	40	Converter Maintenance Area	86
Emergency Power Generators	41	Cooling Water Plant	87
Reagents Run-Off Pond	42	Pyrite Feed Preparation	88
Cooke Tailings Feed Plant	43	Gas Cleaning Plant	89
Cooke Uranium Leach	44	Coal Stockpile	90
Cooke Rip Pre-Screening and pH Adjustment	45	Attenuation Dam	91
Cooke Rip Screening and Rip Section 1 and 2	46	Boiler Feed Water Plant	92



Projection: Transverse Mercator Ref #: sdp.GOL2376.201508.199
 Datum: WGS 1984 Revision Number: 1
 Central Meridian: 27°E Date: 07/12/2015



Sibanye WRTRP EIA

RTSF Location

Legend

- Settlement
 - Main Road
 - Minor Road
 - +— Railway Line
 - Non-Perennial Stream
 - Perennial Stream
 - Dam Wall
 - Dam / Lake
 - Non-Perennial Pan
 - Wetland
- ### Infrastructure
- Infrastructure Point
 - Powerlines
 - Pipelines: Kloof Mining Right
 - Topsoil Stockpile
 - Topsoil Spoil
 - CPP and Future Uranium Plant
 - Regional Tailings Storage Facility
 - TSF Infrastructure
 - Kloof Mining Right

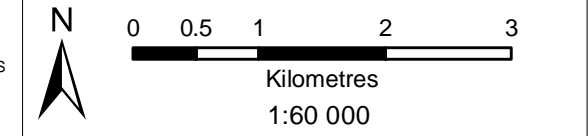


Source: Esri, DigitalGlobe, GeoEye, Earthstar Geographics, CNES/Airbus DS, USDA, USGS, AEX, Getmapping, Aerogrid, IGN, IGP, swisstopo, and the GIS User Community



• Sustainability • Service • Positive Change • Professionalism • Future Focused • Integrity

Projection: Transverse Mercator Ref #: sdp.GOL2376.201508.200
 Datum: WGS 1984 Revision Number: 4
 Central Meridian: 27°E Date: 13/01/2016



Sibanye WRTRP EIA

Ezulwini Land Tenure

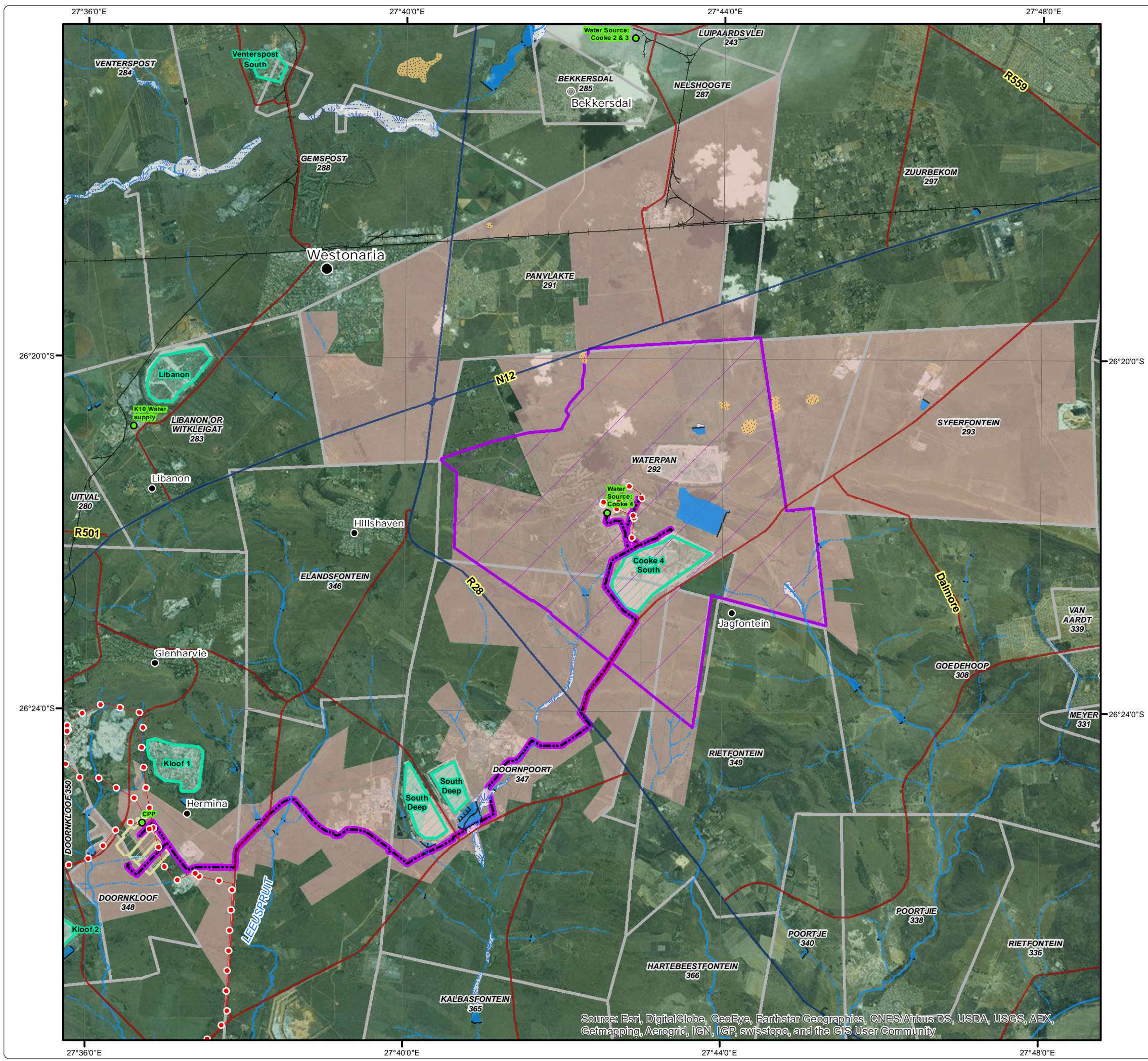
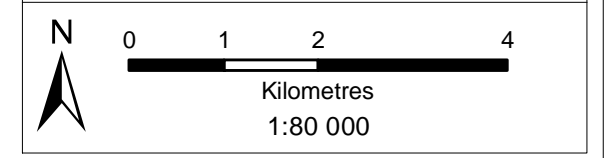
Legend

- Major Town
 - ⊙ Other Town
 - Settlement
 - Arterial / National Route
 - Main Road
 - Railway Line
 - Non-Perennial Stream
 - Perennial Stream
 - Dam Wall
 - Dam / Lake
 - Perennial Pan
 - Non-Perennial Pan
 - Wetland
 - Farm Boundary
 - Directly Affected Farm Portion
- ### Infrastructure
- Infrastructure Point
 - Powerlines
 - Pipelines: Ezulwini Mining Right
 - CPP and Future Uranium Plant
 - TSF Infrastructure
 - Ezulwini Mining Right



• Sustainability • Service • Positive Change • Professionalism • Future Focused • Integrity

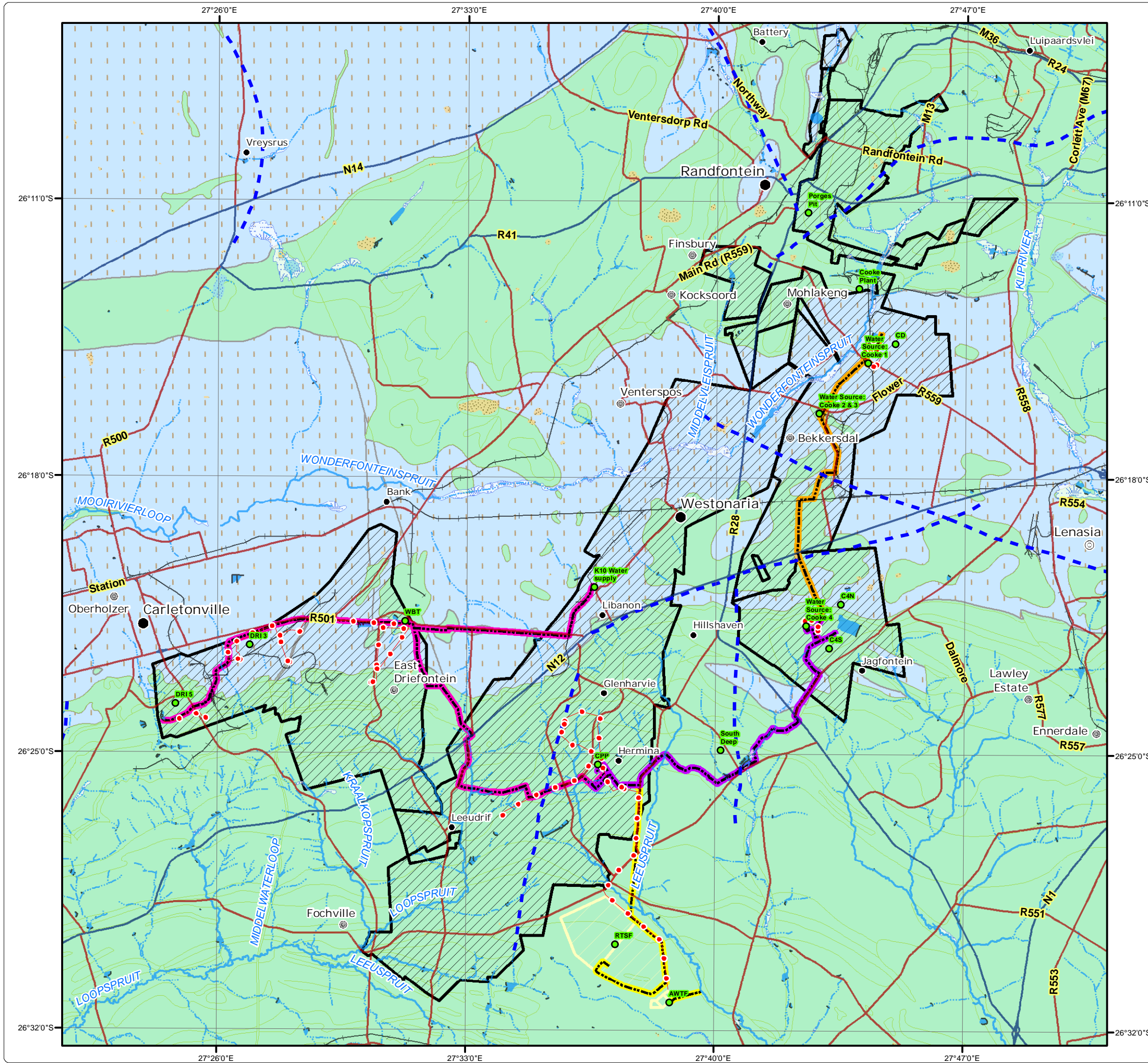
Projection: Transverse Mercator Ref #: sdp.GOL2376.201508.195
 Datum: WGS 1984 Revision Number: 3
 Central Meridian: 27°E Date: 22/12/2015



Source: Esri, DigitalGlobe, GeoEye, Earthstar Geographics, CNES/Airbus DS, USDA, USGS, AEX, Getmapping, Aerogrid, IGN, IGP, swisstopo, and the GIS User Community

Sibanye WRTRP EIA

Regional Geology



Legend

- Major Town
- ⊙ Secondary Town
- ⊙ Other Town
- Settlement
- Arterial / National Route
- Main Road
- Railway Line
- Non-Perennial Stream
- Perennial Stream
- Dam Wall
- Dam / Lake
- Perennial Pan
- Non-Perennial Pan
- Wetland

Infrastructure

- Infrastructure Point
- Powerlines
- Pipelines: Kloof Mining Right
- Pipelines: Driefontein Mining Right
- Pipelines: Cooke Mining Right
- Pipelines: Ezulwini Mining Right
- Regional Tailings Storage Facility
- Mining Right Boundary

Geology

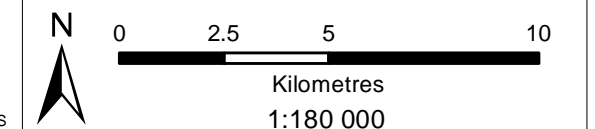
- Structures
- Dolomite
- Transvaal Rocks



DIGBY WELLS
ENVIRONMENTAL

• Sustainability • Service • Positive Change • Professionalism • Future Focused • Integrity

Projection: Transverse Mercator Ref #: sdp.GOL2376.201508.201
 Datum: WGS 1984 Revision Number: 3
 Central Meridian: 27°E Date: 07/12/2015



Sibanye WRTRP EIA Ezulwini Monitoring Boreholes

Legend

- Ezulwini Boreholes
 - Settlement
 - Arterial / National Route
 - Main Road
 - Minor Road
 - Non-Perennial Stream
 - Perennial Stream
 - Dam Wall
 - Dam / Lake
 - Perennial Pan
 - Non-Perennial Pan
 - Wetland
- ### Infrastructure
- Infrastructure Point
 - Powerlines
 - Pipelines: Ezulwini Mining Right
 - TSF Infrastructure
 - Ezulwini Mining Right

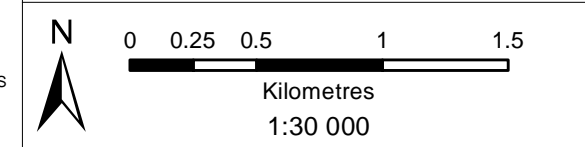


Source: Esri, DigitalGlobe, GeoEye, Earthstar Geographics, CNES/Airbus DS, USDA, USGS, AEX, Getmapping, Aerogrid, IGN, IGP, swisstopo, and the GIS User Community



• Sustainability • Service • Positive Change • Professionalism • Future Focused • Integrity

Projection: Transverse Mercator Ref #: meg.GOL2376.201511.183
 Datum: WGS 1984 Revision Number: 1
 Central Meridian: 27°E Date: 22/12/2015



Sibanye WRTRP EIA Noise Monitoring Locations

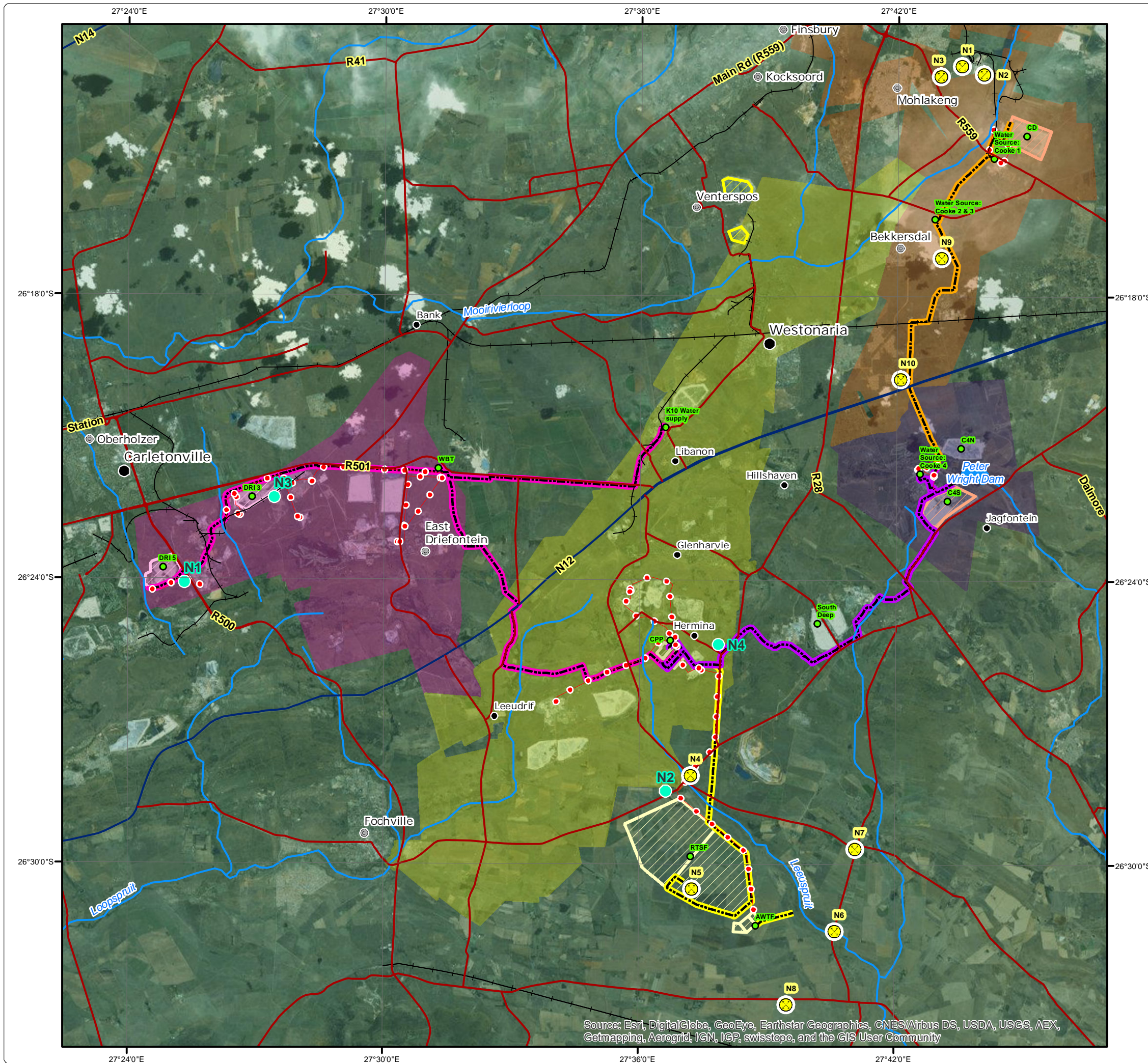
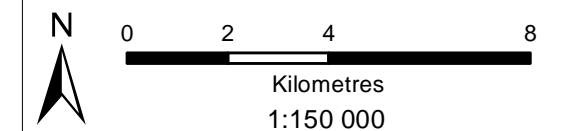
Legend

- Current Noise Monitoring Location
- Historical Noise Monitoring Location
- Major Town
- Other Town
- Settlement
- Main Roads
- National Roads
- Railway Line
- River
- Dam
- Infrastructure Point
- Powerlines
- Pipelines: Kloof Mining Right
- Pipelines: Driefontein Mining Right
- Pipelines: Cooke Mining Right
- Pipelines: Ezulwini Mining Right
- CPP and Future Uranium Plant
- Regional Tailings Storage Facility
- TSF within Kloof Mining Right
- TSF within Driefontein Mining Right
- TSF within Cooke Mining Right
- Kloof Mining Right
- Driefontein Mining Right
- Cooke Mining Right
- Ezulwini Mining Right



• Sustainability • Service • Positive Change • Professionalism • Future Focused • Integrity

Projection: Transverse Mercator Ref #: sdp.GOL2376.201507.042
 Datum: WGS 1984 Revision Number: 1
 Central Meridian: 27°E Date: 07/12/2015



Source: Esri, DigitalGlobe, GeoEye, Earthstar Geographics, CNES/Airbus DS, USDA, USGS, AEX, Getmapping, Aerogrid, IGN, IGP, swisstopo, and the GIS User Community

