

Sibanye WRTRP EIA

Land Use

Land Use
SANBI, 2013

- Cultivated
- Degraded
- Mines
- Natural
- Plantations
- Urban Built-Up
- Waterbodies

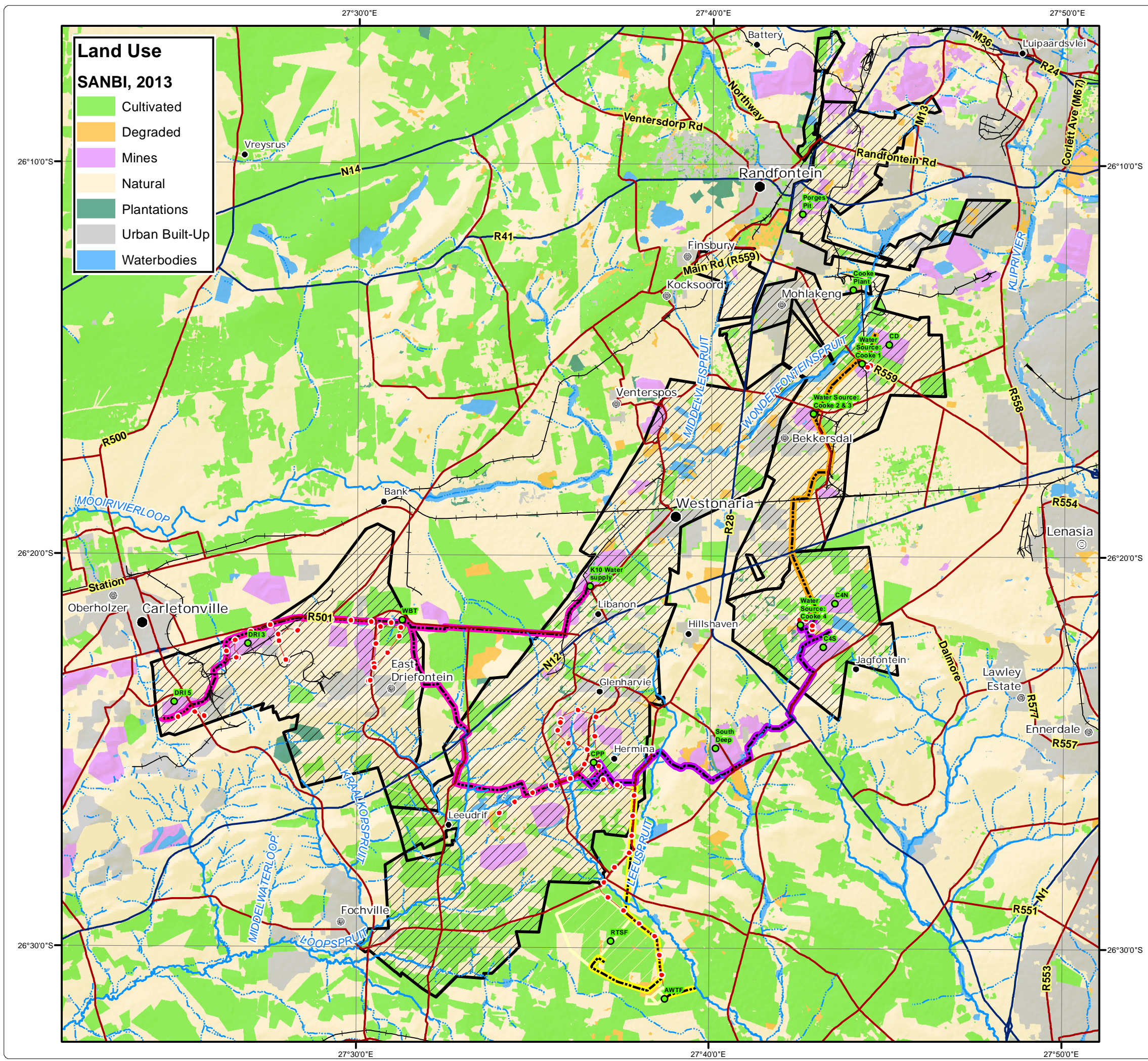
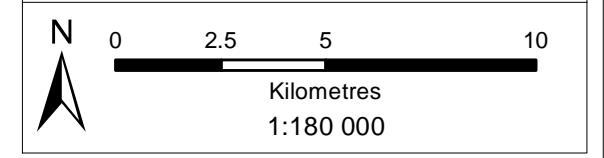
Legend

- Major Town
- Secondary Town
- Other Town
- Settlement
- Arterial / National Route
- Main Road
- Railway Line
- Non-Perennial Stream
- Perennial Stream
- Infrastructure Point
- Powerlines
- Pipelines: Kloof Mining Right
- Pipelines: Driefontein Mining Right
- Pipelines: Cooke Mining Right
- Pipelines: Ezulwini Mining Right
- Regional Tailings Storage Facility
- Mining Right Boundary



• Sustainability • Service • Positive Change • Professionalism • Future Focused • Integrity

Projection: Transverse Mercator Ref #: sdp.GOL2376.201508.205
 Datum: WGS 1984 Revision Number: 3
 Central Meridian: 27°E Date: 07/12/2015



Sibanye WRTRP EIA

Land Capability

Land Capability
Klingebeil, A., & Montgomery, P. (1961)

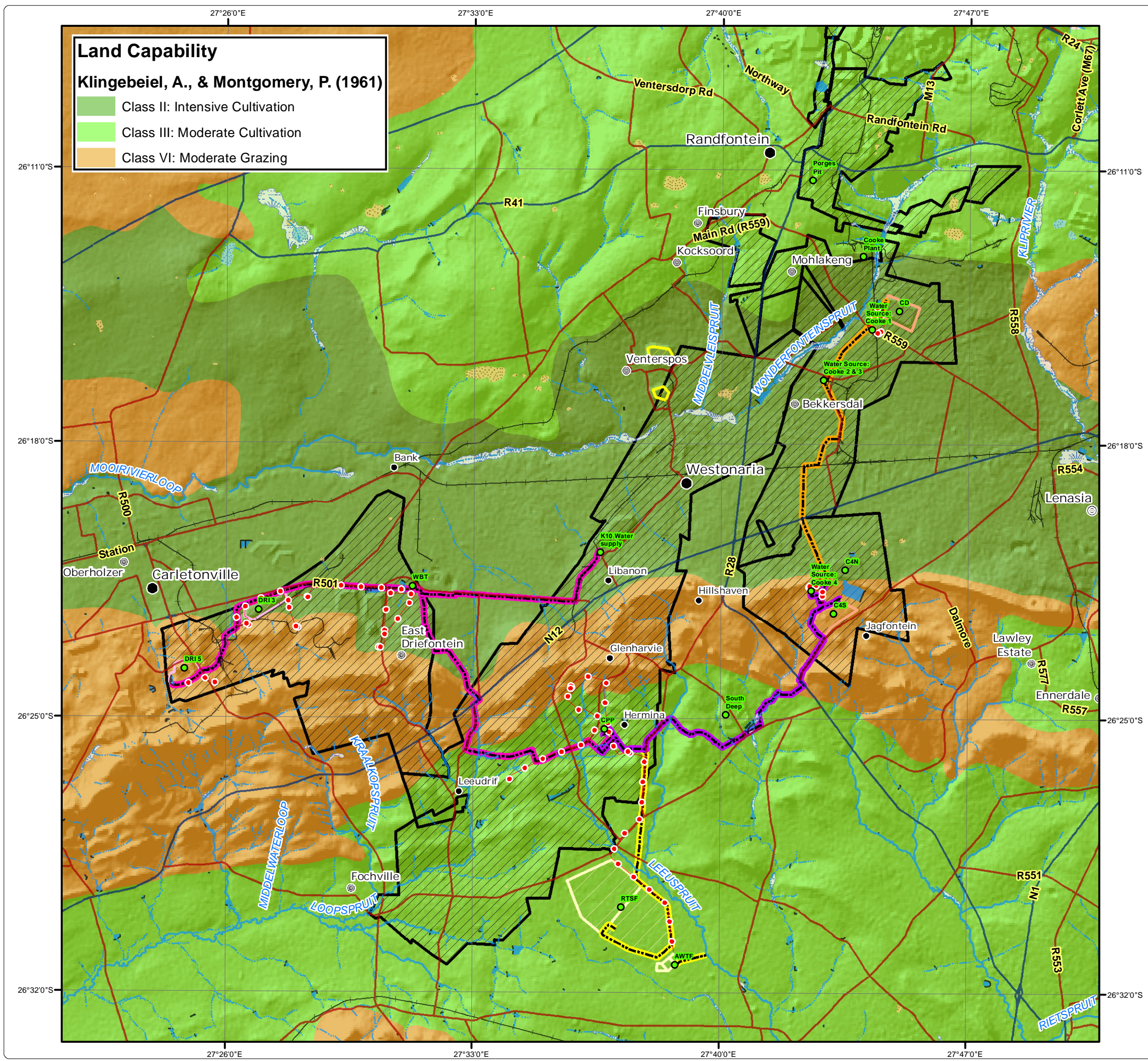
- Class II: Intensive Cultivation
- Class III: Moderate Cultivation
- Class VI: Moderate Grazing

Legend

- Major Town
- Secondary Town
- Other Town
- Settlement
- Arterial / National Route
- Main Road
- Railway Line
- Non-Perennial Stream
- Perennial Stream
- Dam Wall
- Dam / Lake
- Perennial Pan
- Non-Perennial Pan
- Wetland

Infrastructure

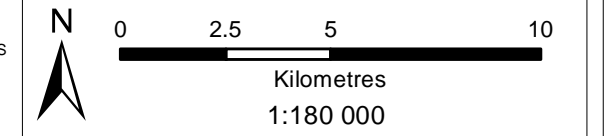
- Infrastructure Point
- Powerlines
- Pipelines: Kloof Mining Right
- Pipelines: Driefontein Mining Right
- Pipelines: Cooke Mining Right
- Pipelines: Ezulwini Mining Right
- Regional Tailings Storage Facility
- TSF within Kloof Mining Right
- TSF within Driefontein Mining Right
- TSF within Cooke Mining Right
- Mining Right Boundary



DIGBY WELLS ENVIRONMENTAL

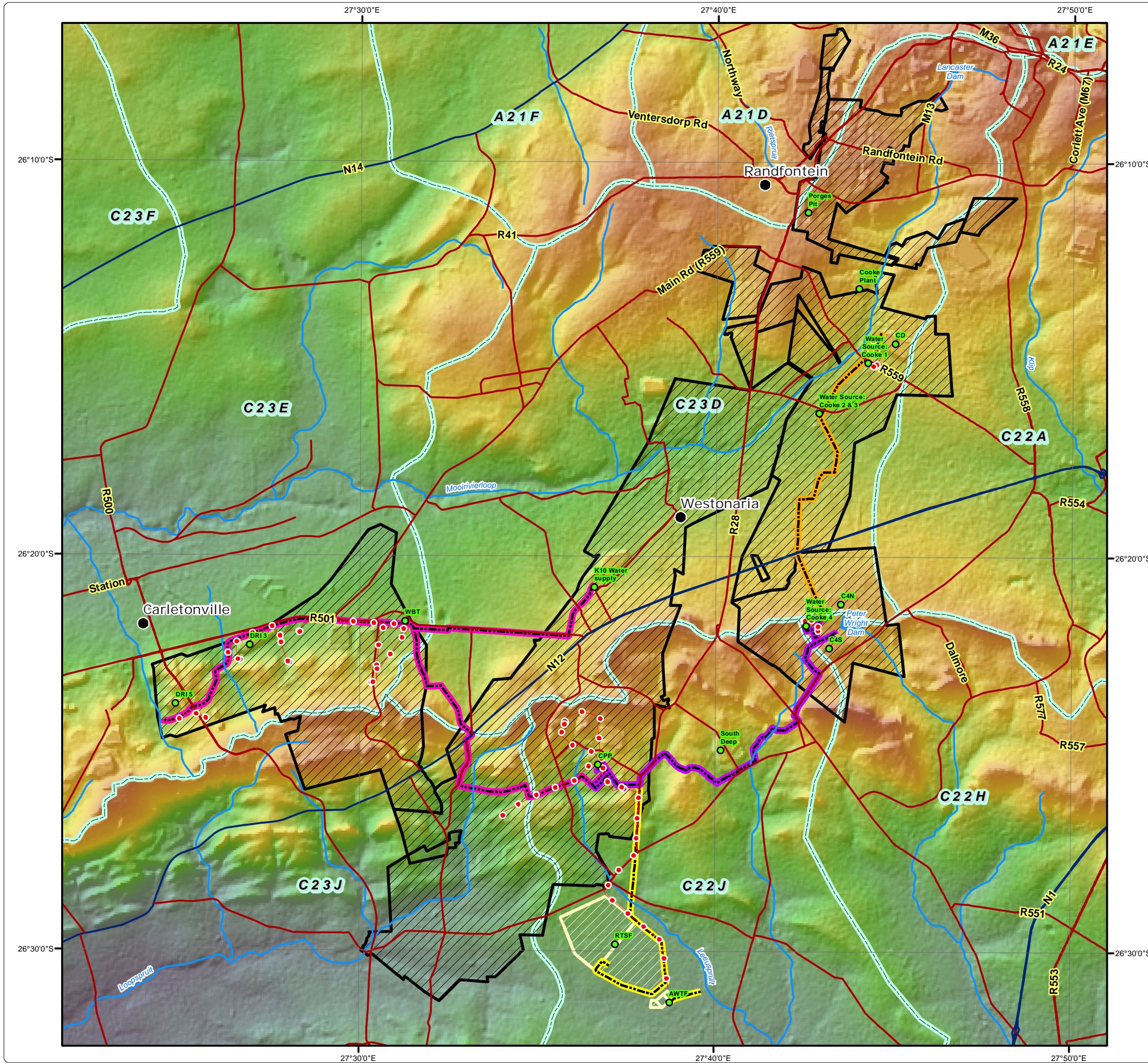
• Sustainability • Service • Positive Change • Professionalism • Future Focused • Integrity

Projection: Transverse Mercator Ref #: sdp.GOL2376.201508.206
 Datum: WGS 1984 Revision Number: 3
 Central Meridian: 27°E Date: 07/12/2015



Sibanye WRTRP EIA

Quaternary Catchments



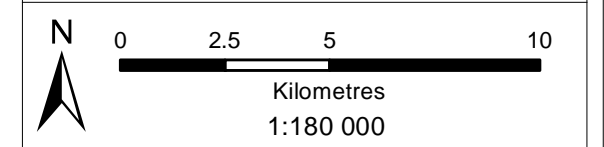
Legend

- Major Town
- Main Roads
- National Roads
- River
- Dam
- Quaternary Catchment Boundary
- Infrastructure**
- Infrastructure Point
- Powerlines
- ▨ Regional Tailings Storage Facility
- Pipelines: Kloof Mining Right
- Pipelines: Driefontein Mining Right
- Pipelines: Cooke Mining Right
- Pipelines: Ezulwini Mining Right
- ▨ Mining Right Boundary
- Topography Model**
- Elevation (m.a.m.s.l.)**
- High : 1838
- Low : 1395



• Sustainability • Service • Positive Change • Professionalism • Future Focused • Integrity

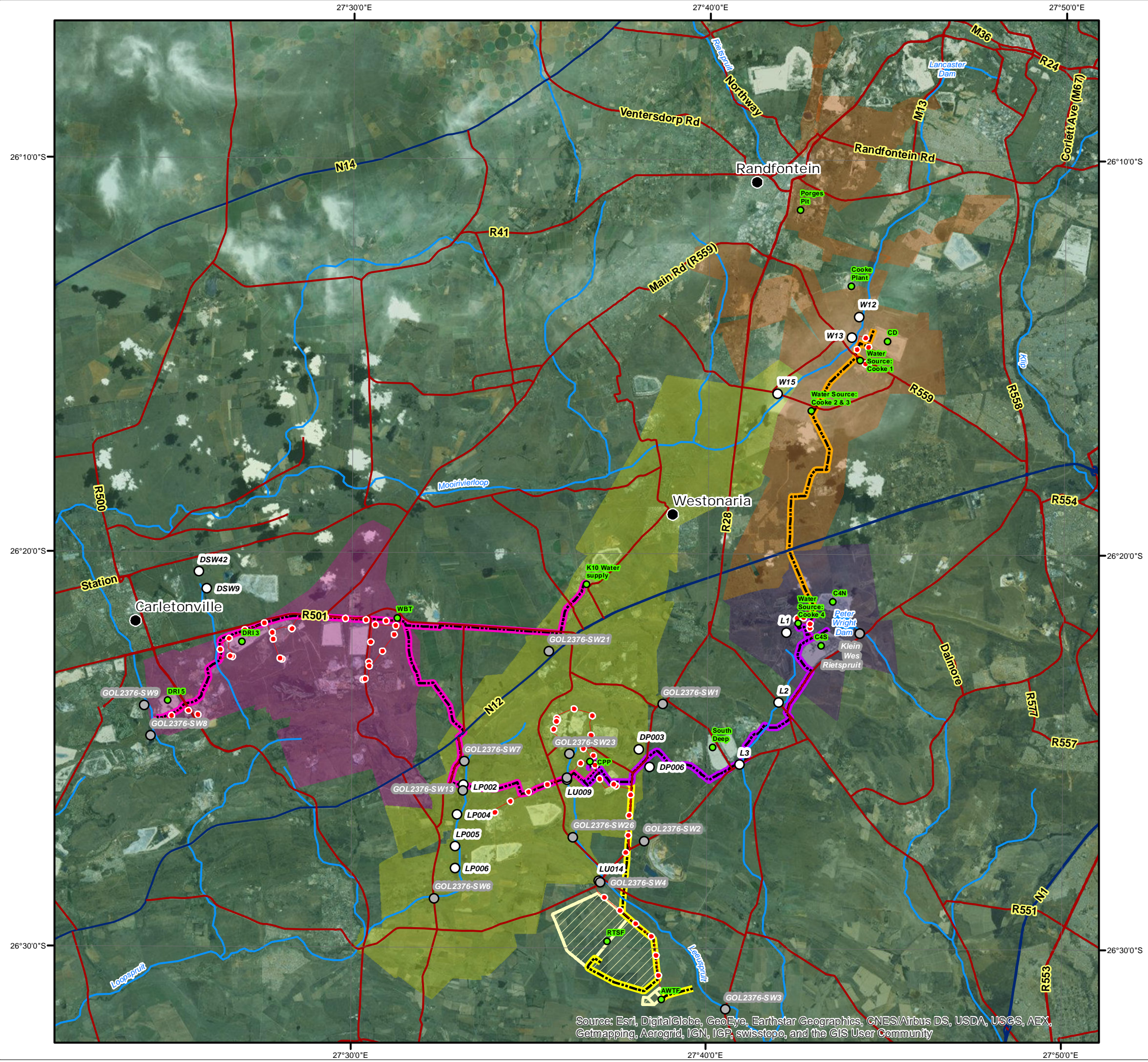
Projection: Transverse Mercator Ref #: sdp.GOL2376.201507.177
 Datum: WGS 1984 Revision Number: 3
 Central Meridian: 27°E Date: 22/12/2015



Sibanye WRTRP EIA Surface Water Monitoring Points

Legend

- Major Town
- Main Roads
- National Roads
- River
- Dam
- Water Quality Monitoring**
- Sibanye
- Digby Wells
- Infrastructure**
- Infrastructure Point
- Powerlines
- ▨ Regional Tailings Storage Facility
- Pipelines: Kloof Mining Right
- Pipelines: Driefontein Mining Right
- Pipelines: Cooke Mining Right
- Pipelines: Ezulwini Mining Right
- Kloof Mining Right
- Driefontein Mining Right
- Cooke Mining Right
- Ezulwini Mining Right

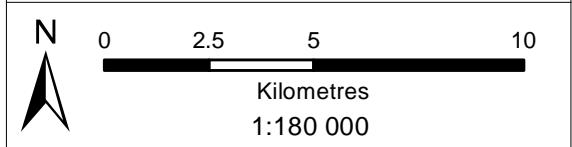


Source: Esri, DigitalGlobe, GeoEye, Earthstar Geographics, CNES/Airbus DS, USDA, USGS, AEX, Getmapping, Aerogrid, IGN, IGP, swisstopo, and the GIS User Community



• Sustainability • Service • Positive Change • Professionalism • Future Focused • Integrity

Projection: Transverse Mercator Ref #: sdp.GOL2376.201507.174
 Datum: WGS 1984 Revision Number: 3
 Central Meridian: 27°E Date: 22/12/2015



Sibanye WRTRP EIA

Vegetation Types

- Vegetation Types**
Mucina & Rutherford, 2006
- Andesite Mountain Bushveld
 - Carletonville Dolomite Grassland
 - Eastern Temperate Freshwater Wetlands
 - Gauteng Shale Mountain Bushveld
 - Gold Reef Mountain Bushveld
 - Rand Highveld Grassland
 - Soweto Highveld Grassland
 - Tsakane Clay Grassland

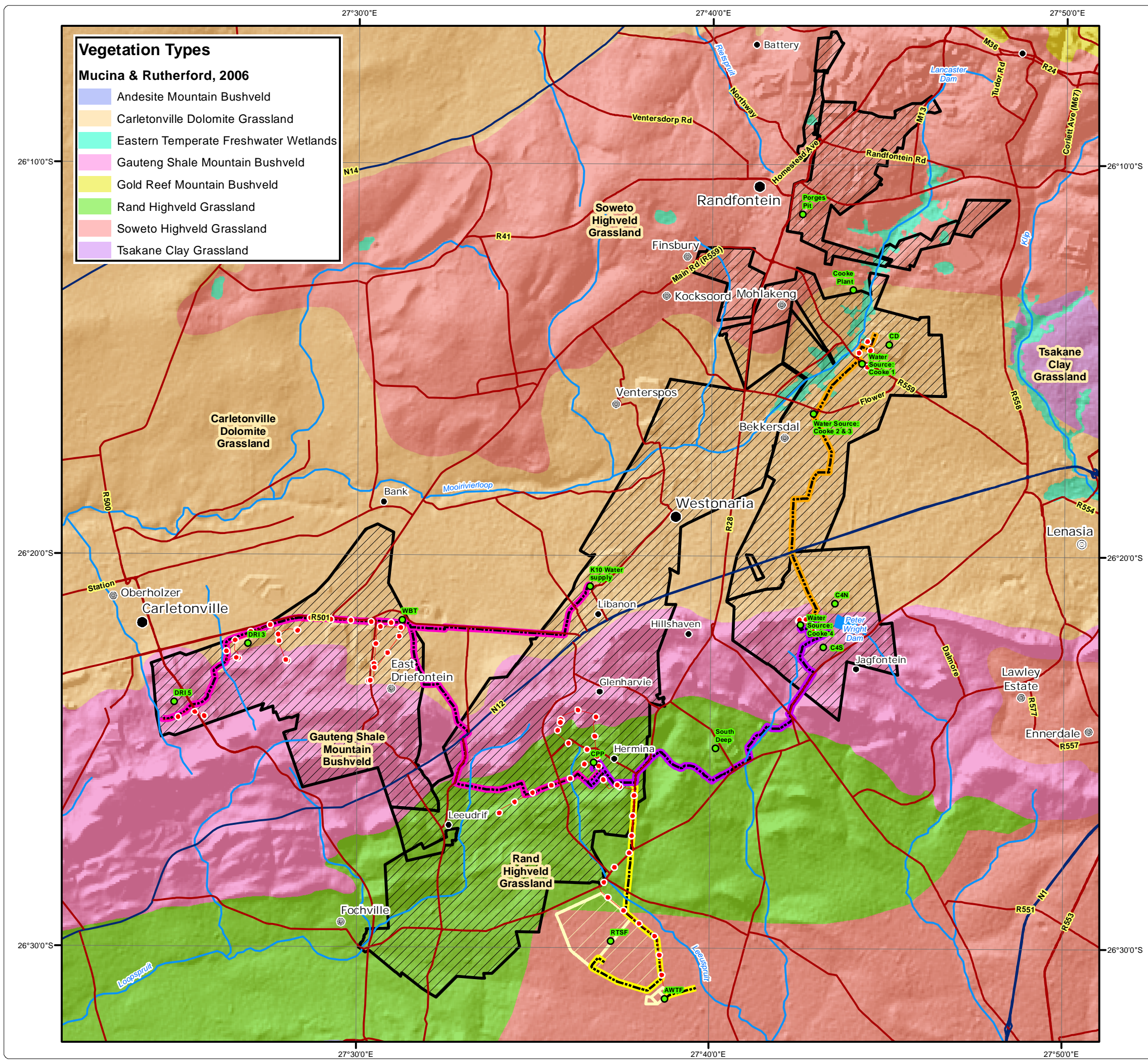
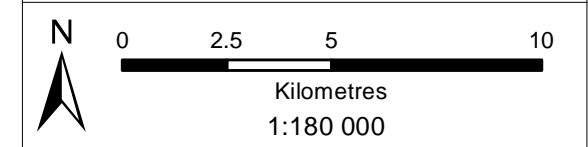
Legend

- Major Town
- ⊙ Secondary Town
- ⊙ Other Town
- Settlement
- Main Roads
- National Roads
- River
- Dam
- Infrastructure Point
- Powerlines
- Pipelines: Kloof Mining Right
- Pipelines: Driefontein Mining Right
- Pipelines: Cooke Mining Right
- Pipelines: Ezulwini Mining Right
- Regional Tailings Storage Facility
- ▨ Mining Right Boundary



• Sustainability • Service • Positive Change • Professionalism • Future Focused • Integrity

Projection: Transverse Mercator Ref #: sdp.GOL2376.201508.208
 Datum: WGS 1984 Revision Number: 3
 Central Meridian: 27°E Date: 07/12/2015



Sibanye WRTRP EIA Aquatic Monitoring Locations

Legend

- Aquatic Monitoring Location
- Major Town
- Other Town
- Settlement
- Main Roads
- National Roads
- Railway Line
- River
- Dam

Infrastructure

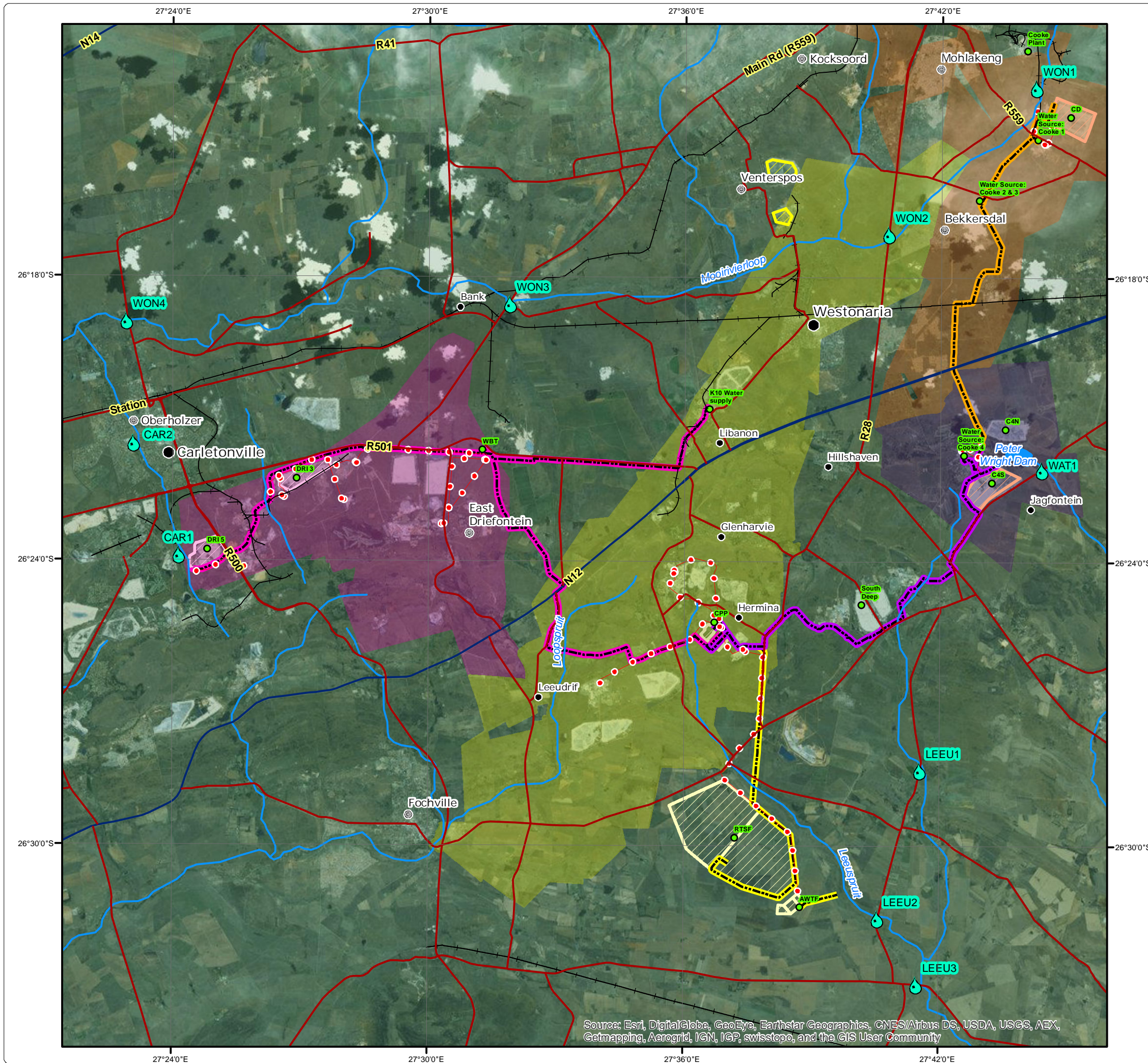
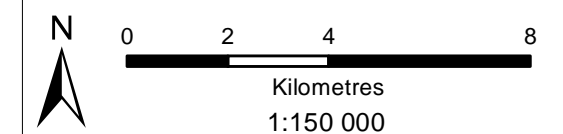
- Infrastructure Point
- Powerlines
- Pipelines: Kloof Mining Right
- Pipelines: Driefontein Mining Right
- Pipelines: Cooke Mining Right
- Pipelines: Ezulwini Mining Right
- CPP and Future Uranium Plant
- Regional Tailings Storage Facility
- TSF within Kloof Mining Right
- TSF within Driefontein Mining Right
- TSF within Cooke Mining Right
- Kloof Mining Right
- Driefontein Mining Right
- Cooke Mining Right
- Ezulwini Mining Right



DIGBY WELLS
ENVIRONMENTAL

• Sustainability • Service • Positive Change • Professionalism • Future Focused • Integrity

Projection: Transverse Mercator	Ref #: sdp.GOL2376.201507.113
Datum: WGS 1984	Revision Number: 1
Central Meridian: 27°E	Date: 07/12/2015

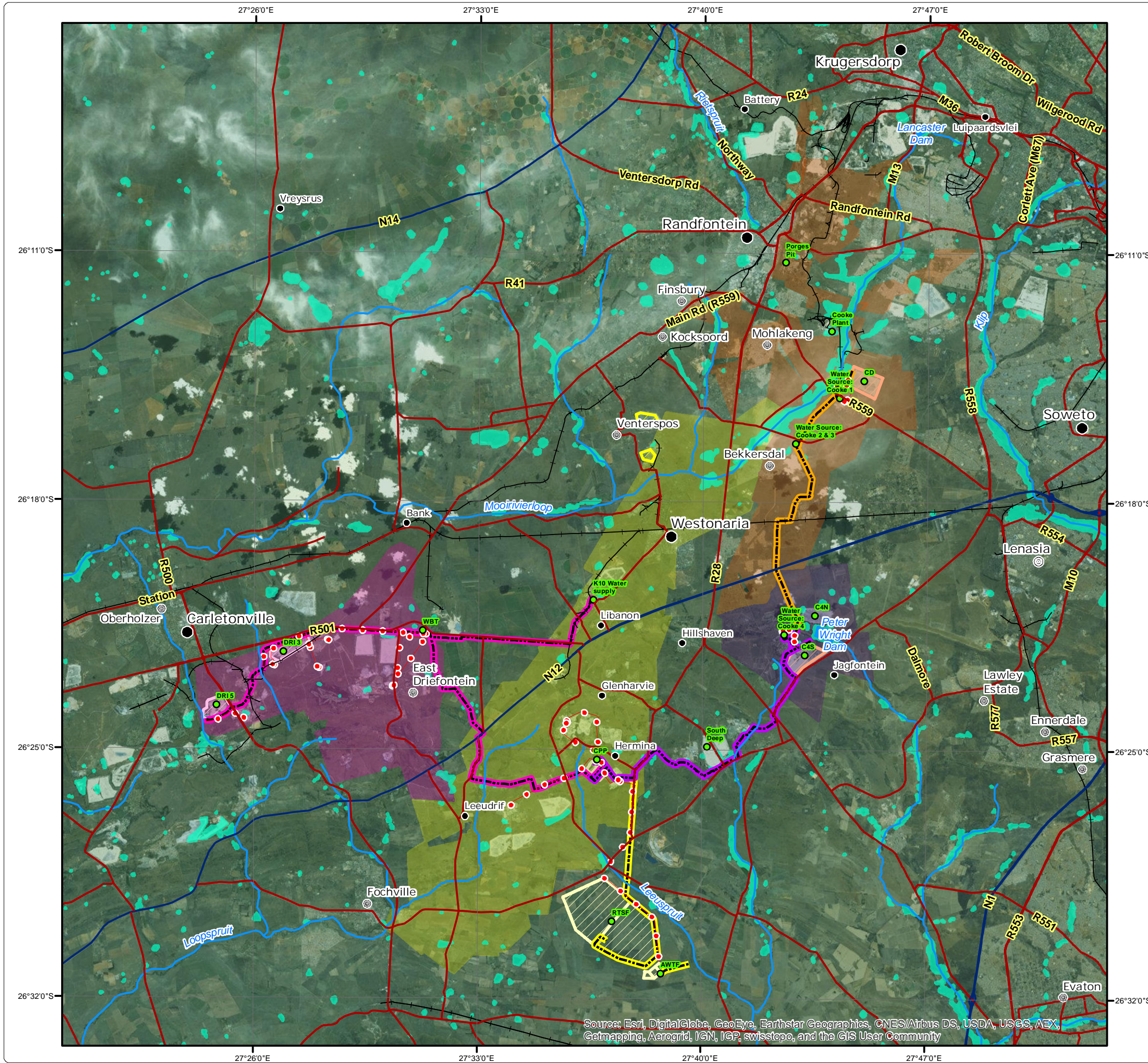


Sibanye WRTRP EIA


NFEPA Wetlands

Legend

- Major Town
 - ⊙ Secondary Town
 - ⊙ Other Town
 - Settlement
 - Main Roads
 - National Roads
 - Railway Line
 - River
 - Dam
 - NFEPA Wetlands
- ### Infrastructure
- Infrastructure Point
 - Powerlines
 - Pipelines: Kloof Mining Right
 - Pipelines: Driefontein Mining Right
 - Pipelines: Cooke Mining Right
 - Pipelines: Ezulwini Mining Right
 - CPP and Future Uranium Plant
 - Regional Tailings Storage Facility
 - TSF within Kloof Mining Right
 - TSF within Driefontein Mining Right
 - TSF within Cooke Mining Right
 - Kloof Mining Right
 - Driefontein Mining Right
 - Cooke Mining Right
 - Ezulwini Mining Right



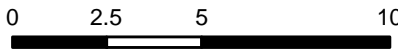
Source: Esri, DigitalGlobe, GeoEye, Earthstar Geographics, CNES/Airbus DS, USDA, USGS, AEX, Getmapping, Aerogrid, IGN, IGP, swisstopo, and the GIS User Community



DIGBY WELLS
ENVIRONMENTAL

• Sustainability • Service • Positive Change • Professionalism • Future Focused • Integrity

Projection: Transverse Mercator	Ref #: sdp.GOL2376.201503.048
Datum: WGS 1984	Revision Number: 1
Central Meridian: 27°E	Date: 07/12/2015



Kilometres
1:200 000

www.digbywells.com © Digby Wells Environmental