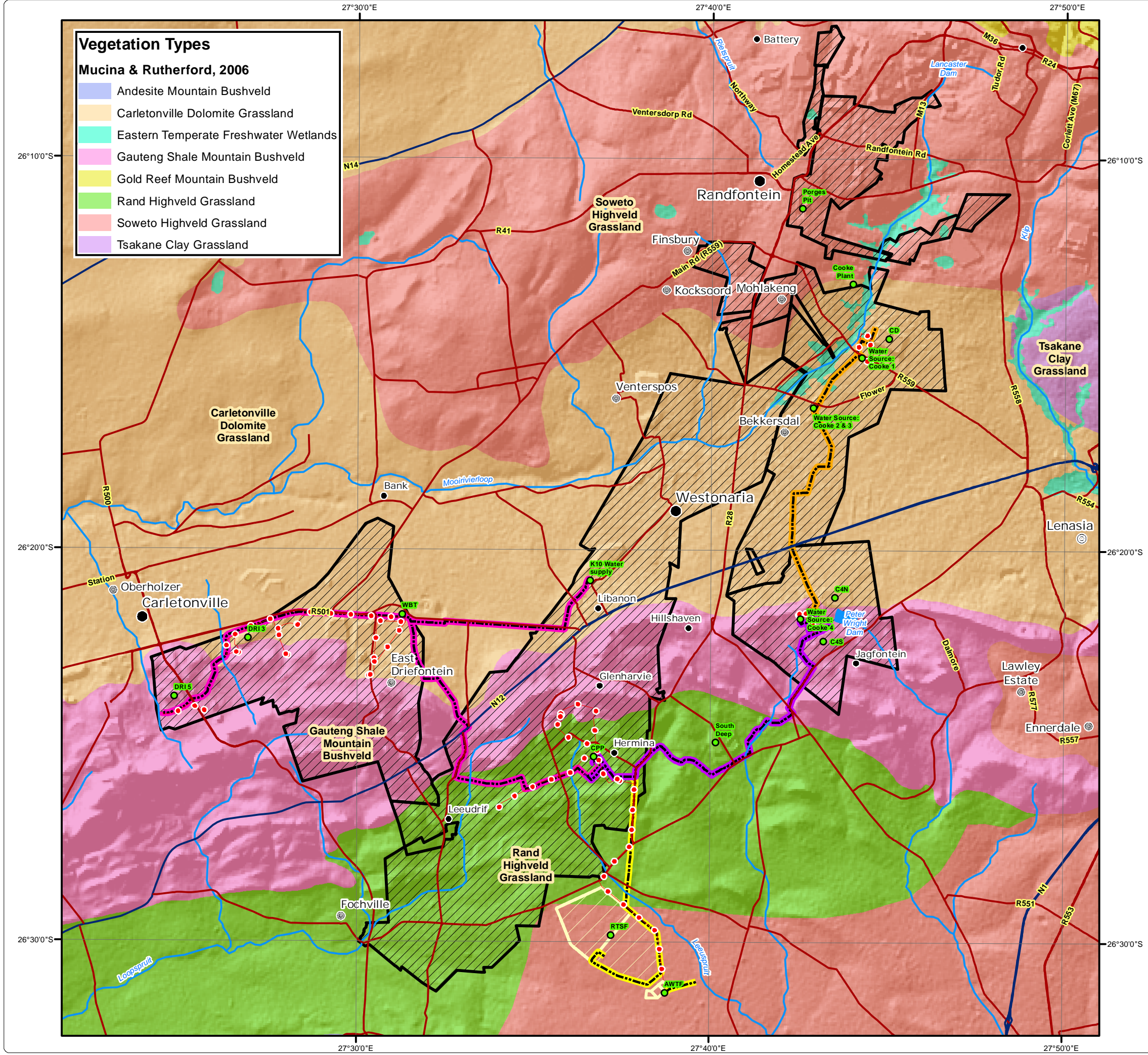


# Sibanye WRTRP EIA

## Vegetation Types

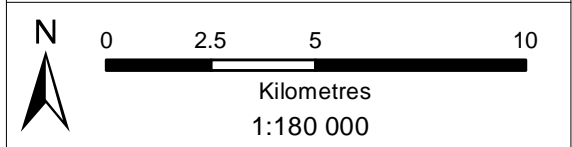
- Vegetation Types**  
Mucina & Rutherford, 2006
- Andesite Mountain Bushveld
  - Carletonville Dolomite Grassland
  - Eastern Temperate Freshwater Wetlands
  - Gauteng Shale Mountain Bushveld
  - Gold Reef Mountain Bushveld
  - Rand Highveld Grassland
  - Soweto Highveld Grassland
  - Tsakane Clay Grassland

- Legend**
- Major Town
  - Secondary Town
  - Other Town
  - Settlement
  - Main Roads
  - National Roads
  - River
  - Dam
- Infrastructure**
- Infrastructure Point
  - Powerlines
  - Pipelines: Kloof Mining Right
  - Pipelines: Driefontein Mining Right
  - Pipelines: Cooke Mining Right
  - Pipelines: Ezulwini Mining Right
  - Regional Tailings Storage Facility
  - Mining Right Boundary



• Sustainability • Service • Positive Change • Professionalism • Future Focused • Integrity

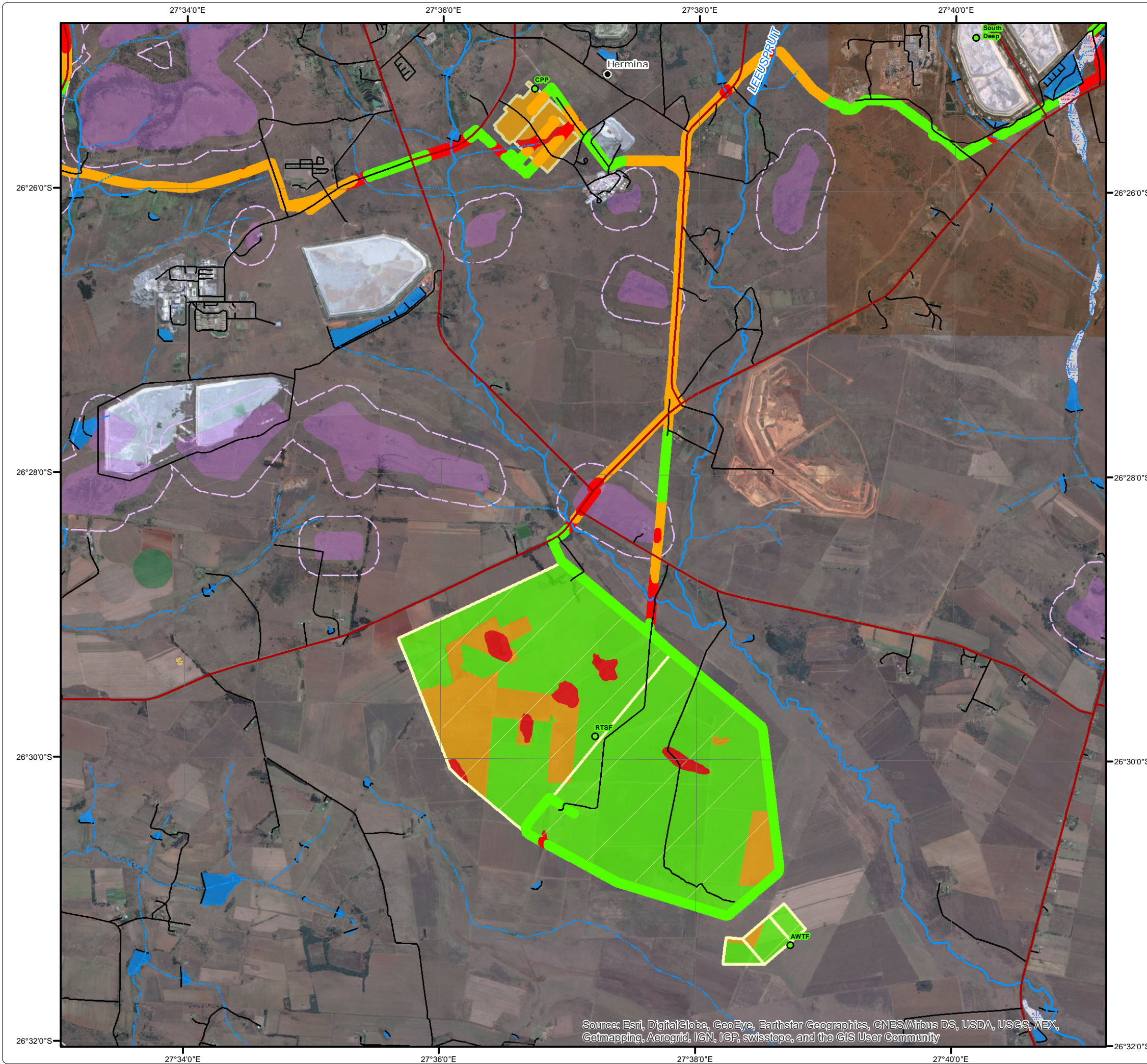
Projection: Transverse Mercator Ref #: sdp.GOL2376.201508.208  
 Datum: WGS 1984 Revision Number: 3  
 Central Meridian: 27°E Date: 07/12/2015



# Sibanye WRTRP EIA Kloof Fauna and Flora Sensitivity Map

### Legend

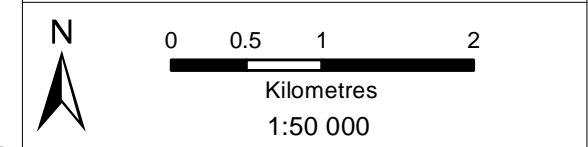
- Settlement
  - Main Road
  - Minor Road
  - Non-Perennial Stream
  - Perennial Stream
  - Dam Wall
  - Dam / Lake
  - Non-Perennial Pan
  - Wetland
- Infrastructure**
- Infrastructure Point
  - CPP and Uranium Plant Footprint
  - Regional Tailings Storage Facility
- Vegetation Sensitivity**
- High
  - Medium - High
  - Low
  - Ridge (High)
  - 200m Ridge Buffer (Medium - High)



Source: Esri, DigitalGlobe, GeoEye, Earthstar Geographics, CNES/Airbus DS, USDA, USGS, AEX, Getmapping, Aerogrid, IGN, IGP, swisstopo, and the GIS User Community



Projection: Transverse Mercator Ref #: sdp.GOL2376.201507.110  
 Datum: WGS 1984 Revision Number: 3  
 Central Meridian: 27°E Date: 21/12/2015



# Sibanye WRTRP EIA Aquatic Monitoring Locations

### Legend

- Aquatic Monitoring Location
- Major Town
- Other Town
- Settlement
- Main Roads
- National Roads
- Railway Line
- River
- Dam

### Infrastructure

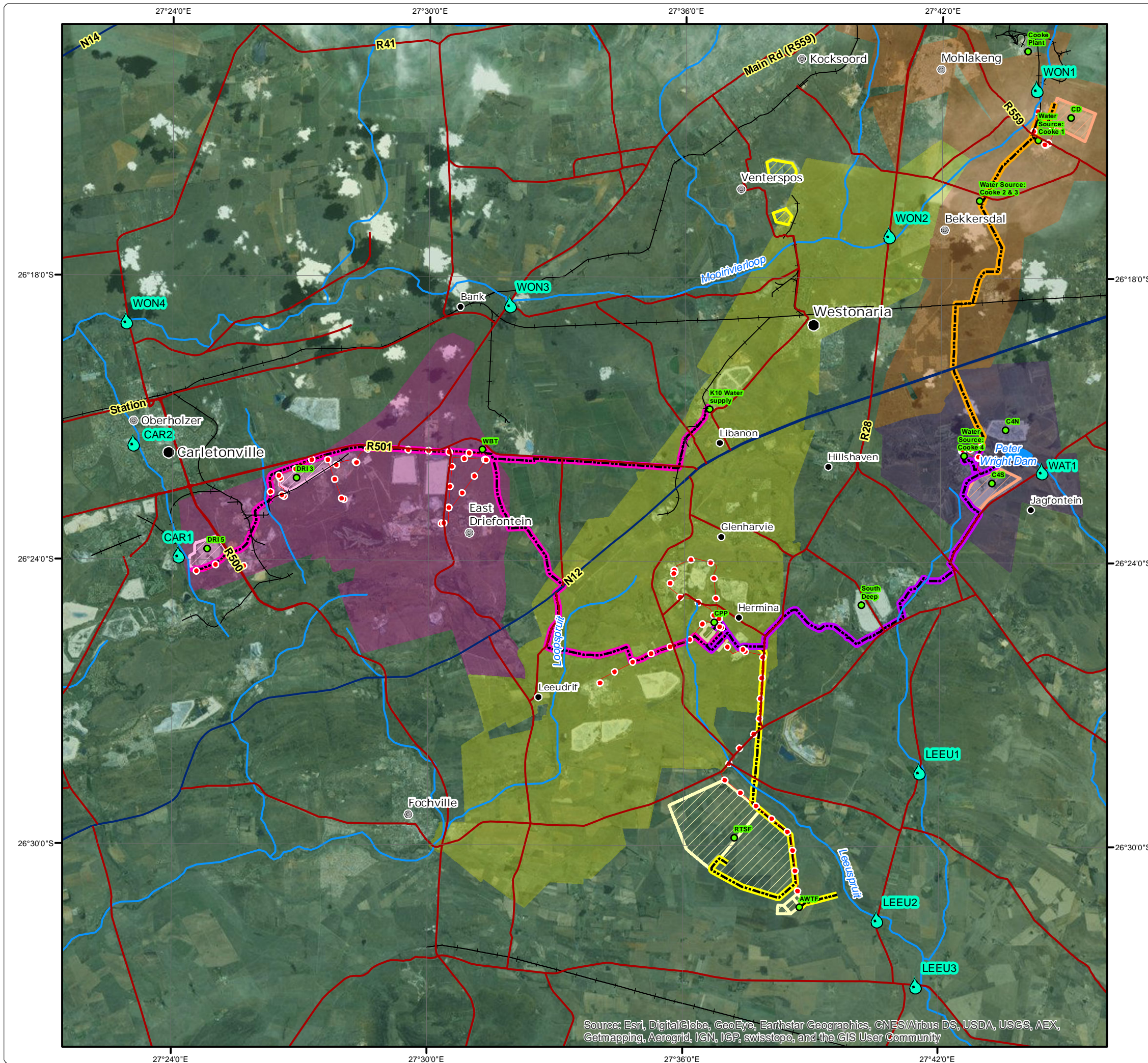
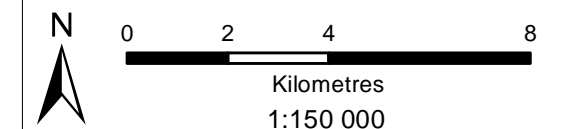
- Infrastructure Point
- Powerlines
- Pipelines: Kloof Mining Right
- Pipelines: Driefontein Mining Right
- Pipelines: Cooke Mining Right
- Pipelines: Ezulwini Mining Right
- CPP and Future Uranium Plant
- Regional Tailings Storage Facility
- TSF within Kloof Mining Right
- TSF within Driefontein Mining Right
- TSF within Cooke Mining Right
- Kloof Mining Right
- Driefontein Mining Right
- Cooke Mining Right
- Ezulwini Mining Right



DIGBY WELLS  
ENVIRONMENTAL

• Sustainability • Service • Positive Change • Professionalism • Future Focused • Integrity

Projection: Transverse Mercator	Ref #: sdp.GOL2376.201507.113
Datum: WGS 1984	Revision Number: 1
Central Meridian: 27°E	Date: 07/12/2015

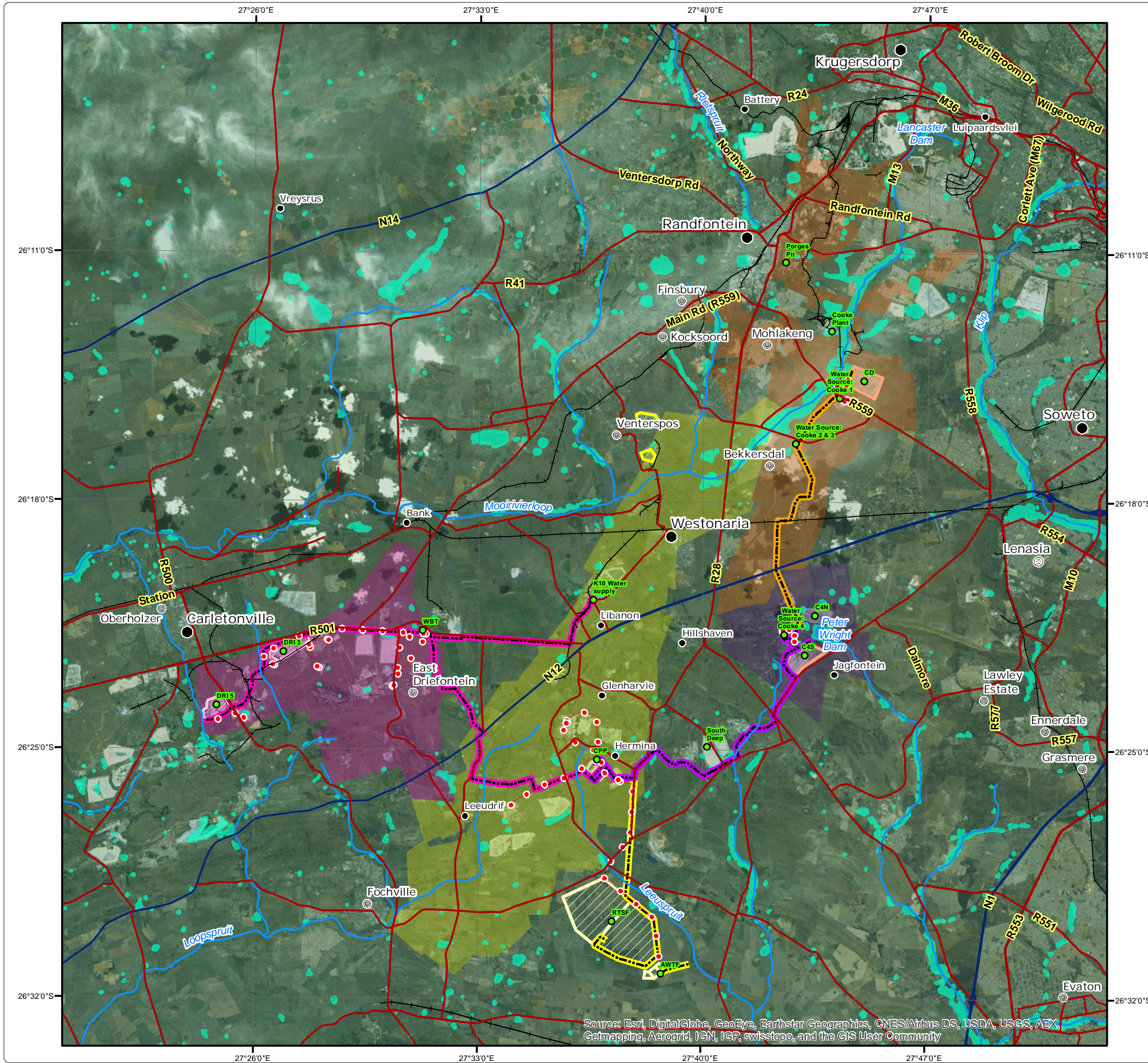


# Sibanye WRTRP EIA


## NFEPA Wetlands

### Legend

- Major Town
  - ⊙ Secondary Town
  - ⊙ Other Town
  - Settlement
  - Main Roads
  - National Roads
  - Railway Line
  - River
  - Dam
  - NFEPA Wetlands
- ### Infrastructure
- Infrastructure Point
  - Powerlines
  - Pipelines: Kloof Mining Right
  - Pipelines: Driefontein Mining Right
  - Pipelines: Cooke Mining Right
  - Pipelines: Ezulwini Mining Right
  - CPP and Future Uranium Plant
  - Regional Tailings Storage Facility
  - TSF within Kloof Mining Right
  - TSF within Driefontein Mining Right
  - TSF within Cooke Mining Right
  - Kloof Mining Right
  - Driefontein Mining Right
  - Cooke Mining Right
  - Ezulwini Mining Right



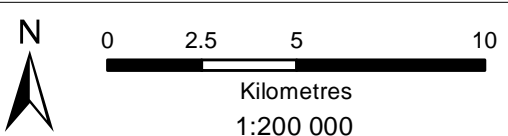
Source: Esri, DigitalGlobe, GeoEye, Earthstar Geographics, CNES/Airbus DS, USDA, USGS, AEX, Getmapping, Aerogrid, IGN, IGP, swisstopo, and the GIS User Community



**DIGBY WELLS**  
ENVIRONMENTAL

• Sustainability • Service • Positive Change • Professionalism • Future Focused • Integrity

Projection: Transverse Mercator      Ref #: sdp.GOL2376.201503.048  
 Datum: WGS 1984      Revision Number: 1  
 Central Meridian: 27°E      Date: 07/12/2015



0 2.5 5 10  
Kilometres  
1:200 000

www.digbywells.com      © Digby Wells Environmental

# Sibanye WRTRP EIA

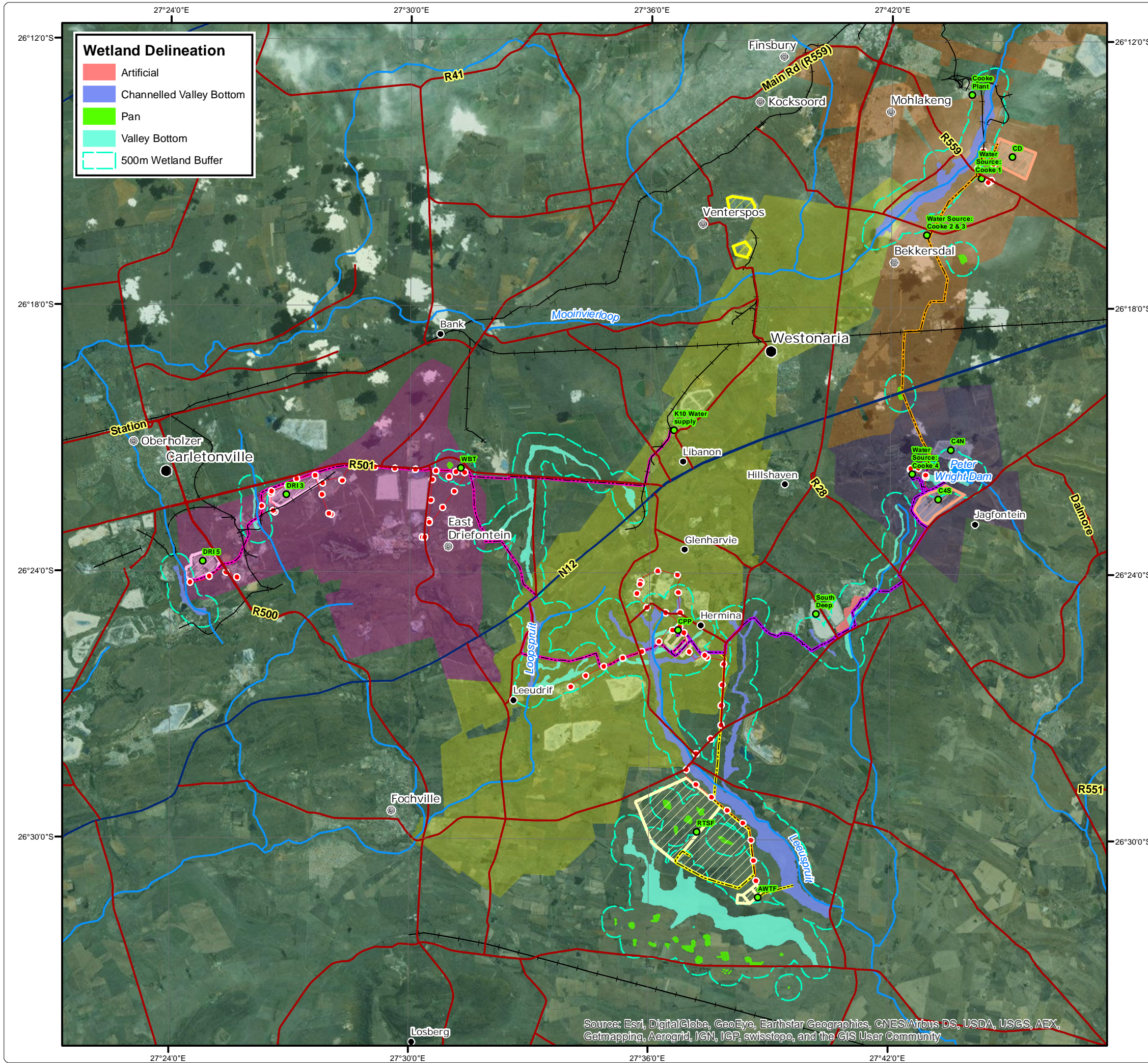
## Wetland Delineation

**Wetland Delineation**

- Artificial
- Channelled Valley Bottom
- Pan
- Valley Bottom
- 500m Wetland Buffer

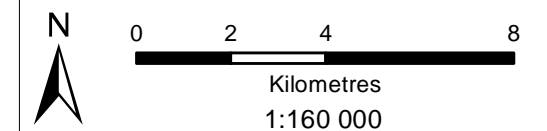
### Legend

- Major Town
  - Other Town
  - Settlement
  - Main Roads
  - National Roads
  - Railway Line
  - River
  - Dam
- Infrastructure**
- Infrastructure Point
  - Powerlines
  - Pipelines: Kloof Mining Right
  - Pipelines: Driefontein Mining Right
  - Pipelines: Cooke Mining Right
  - Pipelines: Ezulwini Mining Right
  - CPP and Future Uranium Plant
  - Regional Tailings Storage Facility
  - TSF within Kloof Mining Right
  - TSF within Driefontein Mining Right
  - TSF within Cooke Mining Right
  - Kloof Mining Right
  - Driefontein Mining Right
  - Cooke Mining Right
  - Ezulwini Mining Right



• Sustainability • Service • Positive Change • Professionalism • Future Focused • Integrity

Projection: Transverse Mercator      Ref #: sdp.GOL2376.201507.058  
 Datum: WGS 1984                              Revision Number: 1  
 Central Meridian: 27°E                        Date: 07/12/2015

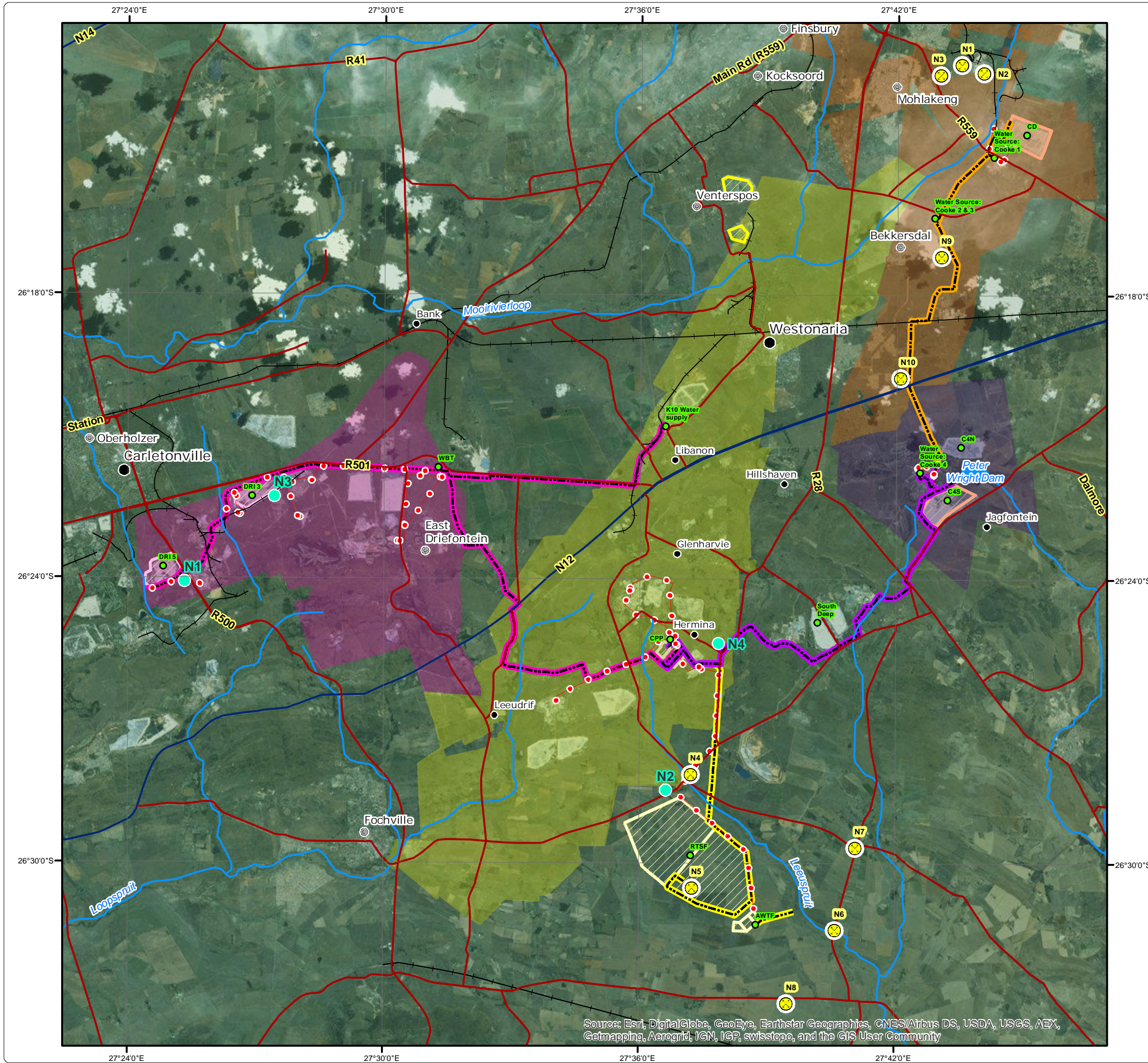


Source: Esri, DigitalGlobe, GeoEye, Earthstar Geographics, CNES/Airbus DS, USDA, USGS, AEX, Getmapping, Aerogrid, IGN, IGP, swisstopo, and the GIS User Community

# Sibanye WRTRP EIA Noise Monitoring Locations

### Legend

- Current Noise Monitoring Location
  - Historical Noise Monitoring Location
  - Major Town
  - Other Town
  - Settlement
  - Main Roads
  - National Roads
  - Railway Line
  - River
  - Dam
- ### Infrastructure
- Infrastructure Point
  - Pipelines: Kloof Mining Right
  - Pipelines: Driefontein Mining Right
  - Pipelines: Cooke Mining Right
  - Pipelines: Ezulwini Mining Right
  - CPP and Future Uranium Plant
  - Regional Tailings Storage Facility
  - TSF within Kloof Mining Right
  - TSF within Driefontein Mining Right
  - TSF within Cooke Mining Right
  - Kloof Mining Right
  - Driefontein Mining Right
  - Cooke Mining Right
  - Ezulwini Mining Right

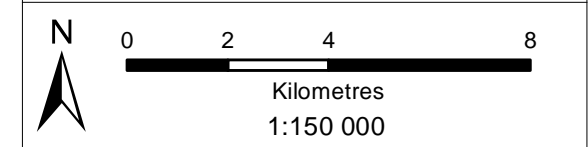


Source: Esri, DigitalGlobe, GeoEye, Earthstar Geographics, CNES/Airbus DS, USDA, USGS, AEX, Getmapping, Aerogrid, IGN, IGP, swisstopo, and the GIS User Community



• Sustainability • Service • Positive Change • Professionalism • Future Focused • Integrity

Projection: Transverse Mercator      Ref #: sdp.GOL2376.201507.042  
 Datum: WGS 1984                              Revision Number: 1  
 Central Meridian: 27°E                        Date: 07/12/2015



# Sibanye WRTRP EIA

## Identified Heritage Sites

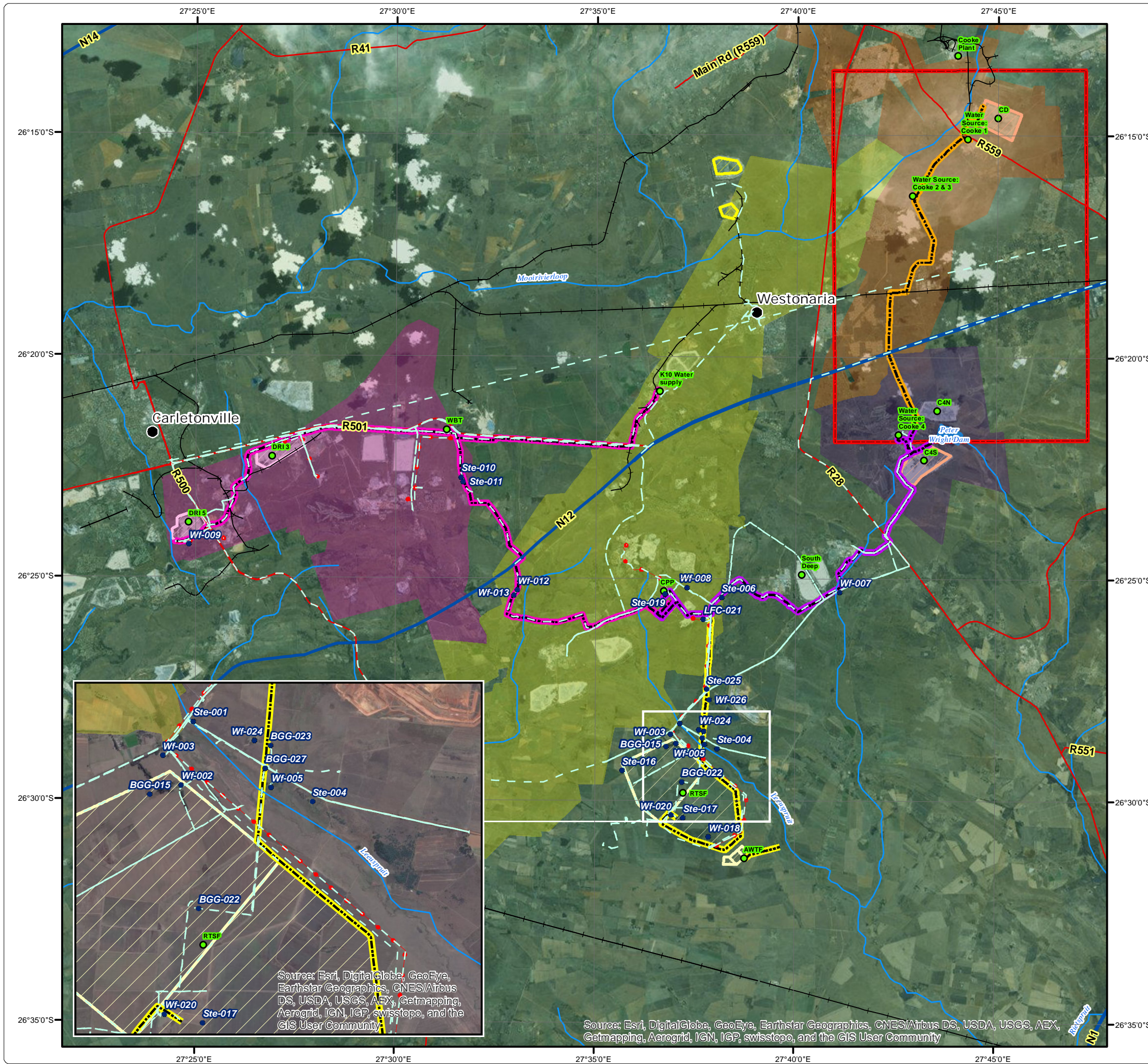
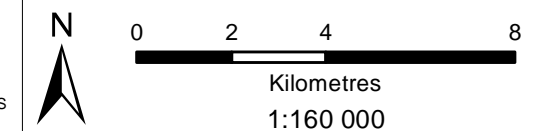
### Legend

- Major Town
- Main Roads
- National Roads
- Railway Line
- River
- Dam
- Identified Heritage Resources**
  - Heritage Site
  - Heritage Tracks
  - Area Excluded from Study
- Infrastructure**
  - Infrastructure Point
  - Powerlines
  - Pipelines: Kloof Mining Right
  - Pipelines: Driefontein Mining Right
  - Pipelines: Cooke Mining Right
  - Pipelines: Ezulwini Mining Right
  - Regional Tailings Storage Facility
  - TSF within Kloof Mining Right
  - TSF within Driefontein Mining Right
  - TSF within Cooke Mining Right
  - Kloof Mining Right
  - Driefontein Mining Right
  - Cooke Mining Right
  - Ezulwini Mining Right



• Sustainability • Service • Positive Change • Professionalism • Future Focused • Integrity

Projection: Transverse Mercator      Ref #: sdp.GOL2376.201507.088  
 Datum: WGS 1984                              Revision Number: 1  
 Central Meridian: 27°E                        Date: 07/12/2015



Source: Esri, DigitalGlobe, GeoEye, Earthstar Geographics, CNES/Airbus DS, USDA, USGS, AEX, Getmapping, Aerogrid, IGN, IGP, swisstopo, and the GIS User Community

Source: Esri, DigitalGlobe, GeoEye, Earthstar Geographics, CNES/Airbus DS, USDA, USGS, AEX, Getmapping, Aerogrid, IGN, IGP, swisstopo, and the GIS User Community