

## PROPOSED GAS INFRASTRUCTURE, COEGA SEZ NOTICE OF ENVIRONMENTAL IMPACT ASSESSMENT AND PUBLIC PARTICIPATION PROCESS

Notice of an Environmental Impact Assessment (EIA) and associated Public Participation Process is given in terms of Regulation 41(3) of the 2014 EIA regulations, as amended, published in Government Gazette No. R987 under Section 24(5) of the National Environmental Management Act (Act No.107 of 1998), that an application will be submitted to the competent authority, the Department of Environmental Affairs (DEA) to carry out the following listed activity (amongst others): GN R 984 Item 4: The development of facilities or infrastructure for the storage, or storage and handling of a dangerous good, where such storage occurs in containers with a combined capacity of more than 500 cubic metres.

### Description and Locality of the Proposed Activity

The Coega Development Corporation (CDC) proposes to develop gas infrastructure as part of the Gas to Power project in the Coega Special Economic Zone (SEZ) to facilitate the development of three gas to power plants (with a combined generation capacity of up to 3000 MW) and to supply Natural Gas to third party off-takers. The gas infrastructure will be located within the Port of Ngqena, Zone 8, Zone 10 and Zone 13 and will include an LNG terminal in the port, Floating Storage and Regasification Unit (FSRU), onshore storage and regasification unit (once requirements exceed the capacity of the FSRU), cryogenic pipelines, gas pipelines, seawater abstraction and discharge pipelines, LNG and gas distribution hub and truck loading facility.

### Public Participation

Public participation is the cornerstone of the EIA process, and your comments have an important role in determining the environmental, social and economic issues to be assessed, and the decision to be taken by the Competent Authority. Please note that only registered Interested & Affected Parties (I&APs) will be notified of the future availability of reports and be invited to provide comments on their content. You are therefore encouraged to register your interest by contacting SRK Consulting using the contact details listed below.

### Representation of approximate positions of components of the application



To register your interest in the proposed activity please contact Wanda Marais at SRK Consulting at  
P.O. Box 21892, 6101, Cape Town, South Africa. Email: wmarais@srk.co.za

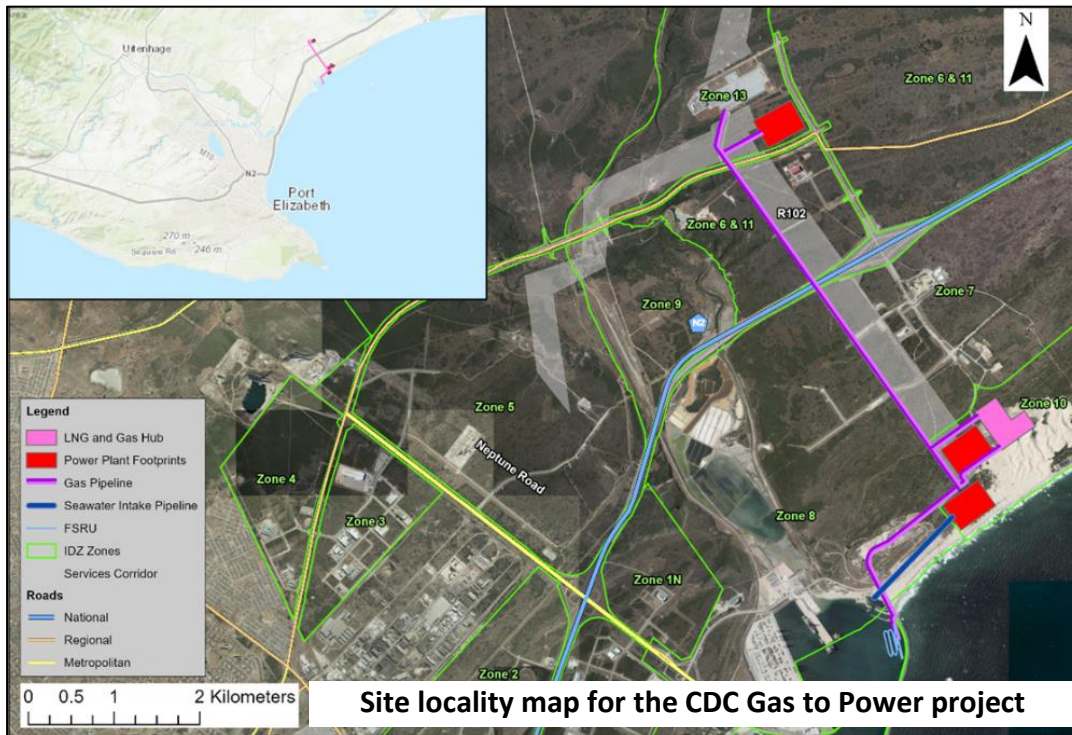
### Environmental Impact Assessment

An EIA is a planning and decision-making tool that is used to identify the environmental consequences of a proposed project, before the development takes place. The purpose of the EIA is to demonstrate what the potential consequences of their choices will be in environmental, economic and social terms. Public issues and concerns must therefore be identified, evaluated and incorporated into the final design if necessary. The EIA process is a two-phase process. The first phase is a Scoping Study, which identifies potential issues requiring specialist investigation via specialist studies. A complete list of should address will be provided for comment in the Draft Scoping Report. The second phase is the Draft Scoping Impact Assessment phase, during which detailed investigations of the issues identified during scoping, will be undertaken.



## PROPOSED GAS TO POWER PROJECT, COEGA SEZ: NOTICE OF ENVIRONMENTAL IMPACT ASSESSMENT PROCESSES & WULA

The Coega Development Corporation (CDC) proposes to develop three Gas to Power plants and associated infrastructure in the Coega SEZ. The power plants will be located in Zones 10 and 13 of the SEZ, with a combined generating capacity of up to 3000 MW. The associated gas infrastructure will be located within the Port of Ngqura, and Zones 8, 10 and 13 of the SEZ. The power plants will be fueled by natural gas to be imported as LNG into the Port of Ngqura, regasified and conveyed via pipeline to each power plant, as well as providing for third party off-takers. The precise combination of power generating technology is unknown, and will include both air and seawater cooling options. An initial 130 MW liquid (diesel/HFO) fuelled phase (2-3 years) is proposed for the zone 13 power plant, should the gas infrastructure not yet be available.



The zone 13 power plant, should the gas infrastructure not yet be available.

The main activities associated with the proposed project are Activities 2 and 4 as listed in GN R325 (Listing Notice 2) of the NEMA 2014 EIA Regulations, as amended. The project also requires an Atmospheric Emissions License (AEL) in terms of the National Environmental Management: Air Quality Act, and Section 21 (c) & (i) Water Use Authorisations in terms of the NEM: Water Act.

The CDC has appointed SRK Consulting to undertake the EIA and AEL application processes for the project. Interested persons are invited to register as IAPs and to submit written representations on the application to:



Lyndle Naidoo, SRK Consulting  
PO Box 21842, Port Elizabeth, 6000  
Fax: (041) 509 4850; Email: [lnaidoo@srk.co.za](mailto:lnaidoo@srk.co.za)

