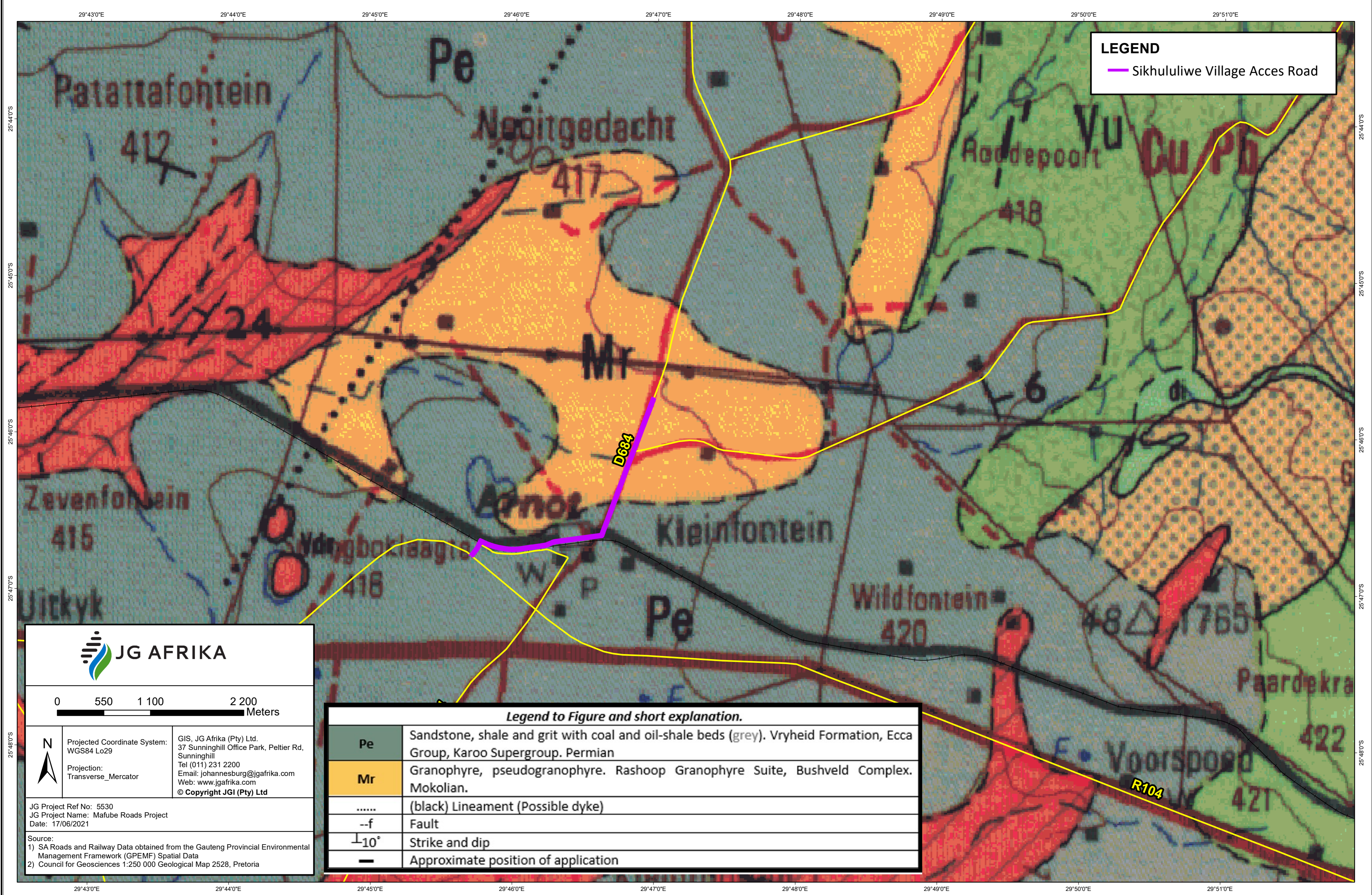


Sikhululiwe Village Acces Road Project: Geology Map



LEGEND

— Sikhululiwe Village Acces Road

Legend to Figure and short explanation.

Pe	Sandstone, shale and grit with coal and oil-shale beds (grey). Vryheid Formation, Ecca Group, Karoo Supergroup. Permian
Mr	Granophyre, pseudogranophyre. Rashoop Granophyre Suite, Bushveld Complex. Mokolian.
.....	(black) Lineament (Possible dyke)
--f	Fault
⊥10°	Strike and dip
—	Approximate position of application

JG AFRIKA

0 550 1 100 2 200 Meters

N

Projected Coordinate System: WGS84 Lo29
 Projection: Transverse_Mercator

GIS, JG Afrika (Pty) Ltd.
 37 Sunninghill Office Park, Peltier Rd, Sunninghill
 Tel (011) 231 2200
 Email: johannesburg@jgafrika.com
 Web: www.jgafrika.com
 © Copyright JGI (Pty) Ltd

JG Project Ref No: 5530
 JG Project Name: Mafube Roads Project
 Date: 17/06/2021

Source:
 1) SA Roads and Railway Data obtained from the Gauteng Provincial Environmental Management Framework (GPEMF) Spatial Data
 2) Council for Geosciences 1:250 000 Geological Map 2528, Pretoria