

Great Karoo Wind Energy Facility

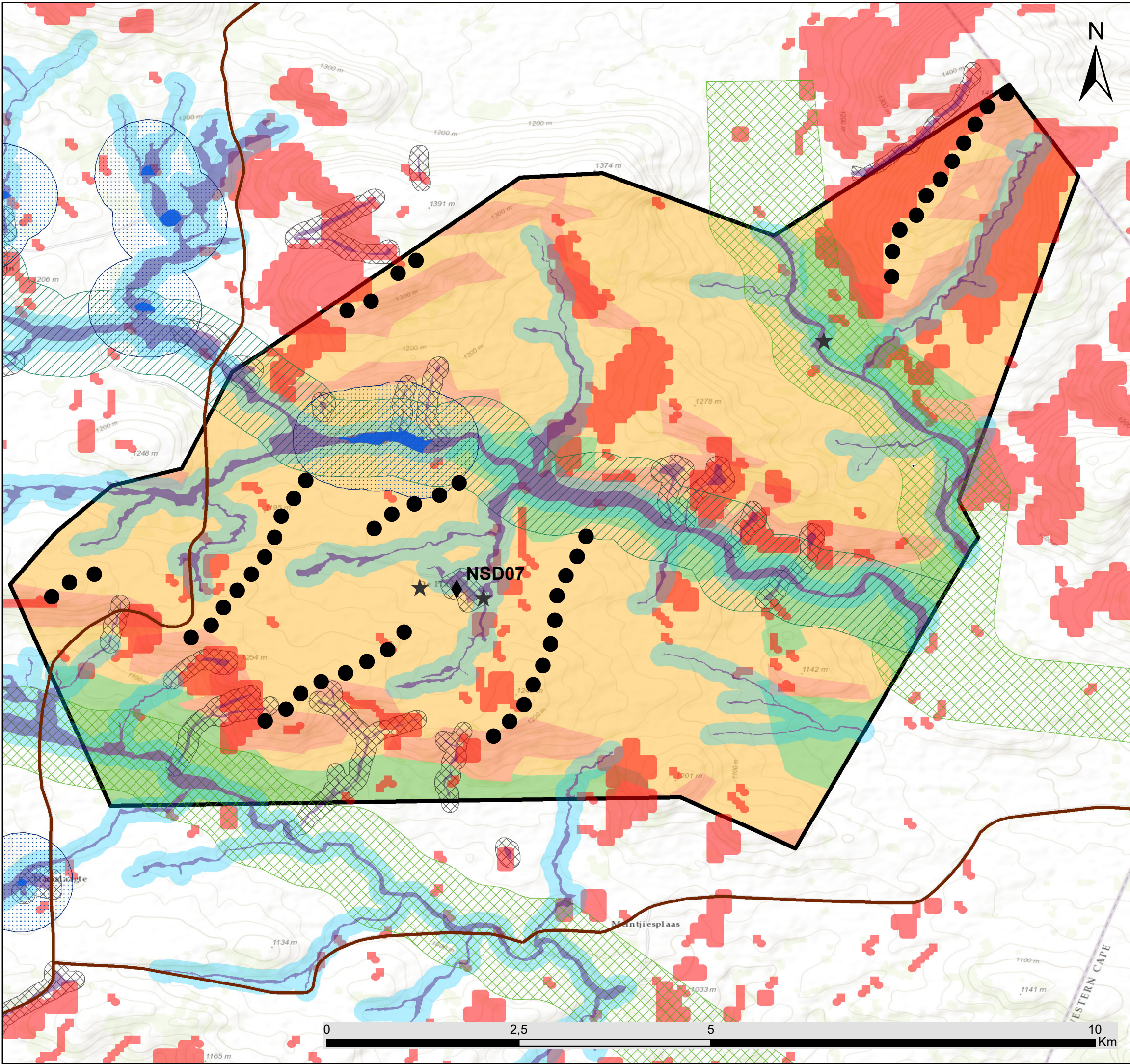
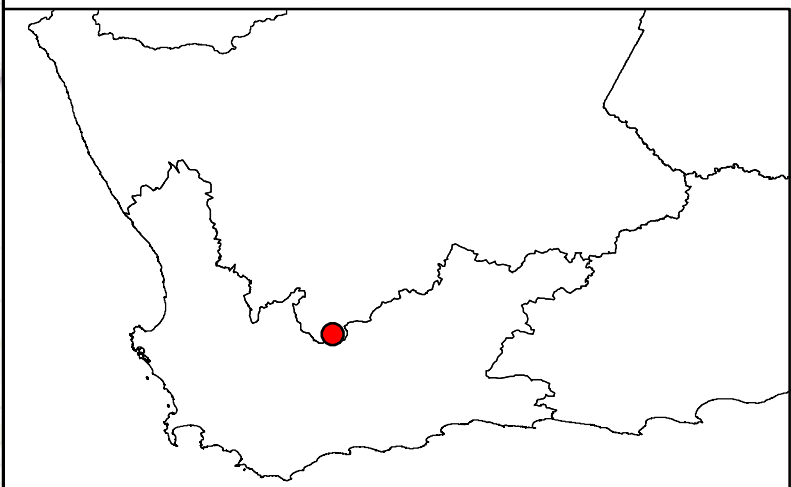
2016 Layout Map

Legend

- Turbines
 - Main roads
 - Affected Property
- ### Environmental Sensitivities
- ◆ Noise Sensitive Development (NSD07)
 - ★ Heritage sites
 - Dams
 - Bat Sensitivity (Medium Sensitivity)
 - ▨ Bat Sensitivity Buffers
 - ▨ Farm dam buffer
 - ▨ Stream Buffers (High Sensitivity)
 - ▨ River Buffer-500m (High Sensitivity)
 - Drainage areas buffer
 - Avifaunal Exclusion Zones (High Sensitivity)
- ### Ecological Sensitivity
- High
 - Medium-High
 - Medium

Scale: 1:48 000
Projection: LO19
Map ref: Great Karoo WEF 2016 Layout Map_11.04.19

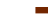

savannah
environmental










Great Karoo Wind Energy Facility

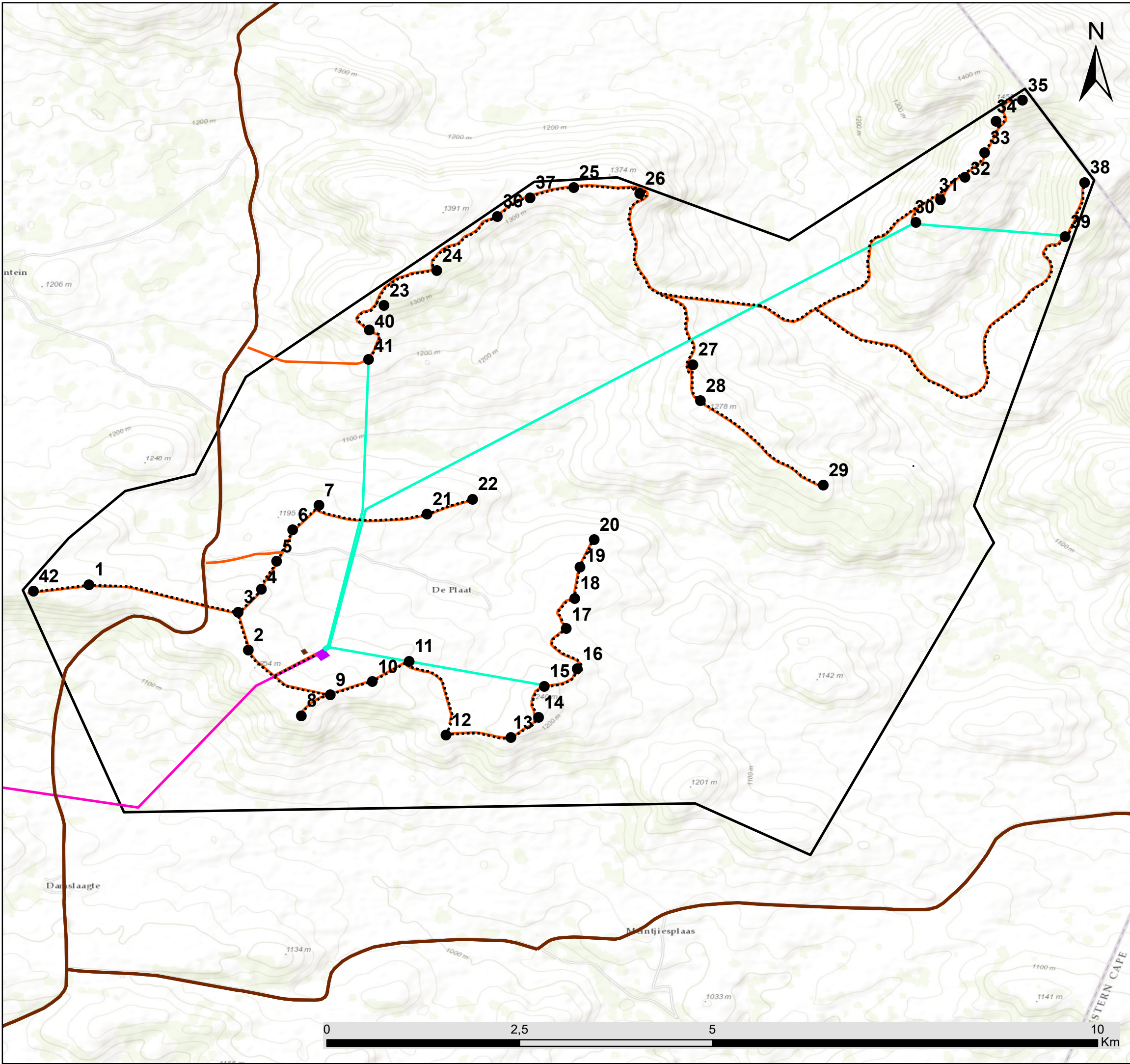
Proposed New Layout Map

Legend

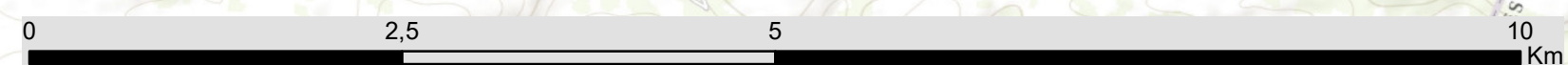
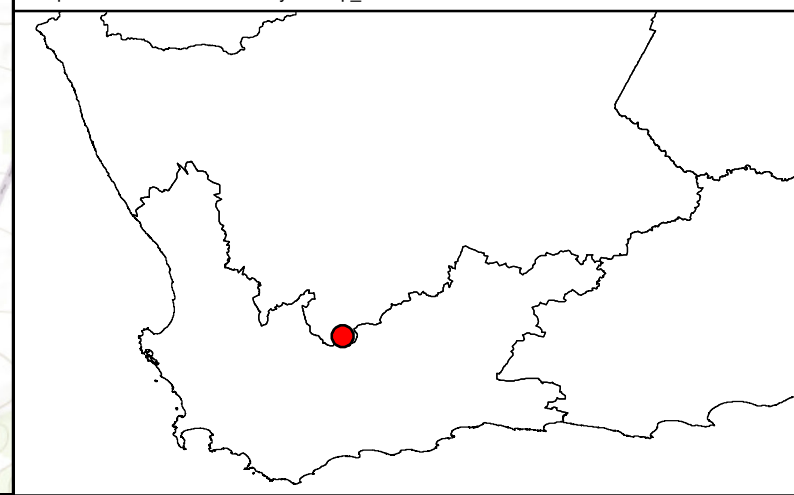
-  Main roads
-  Affected Property

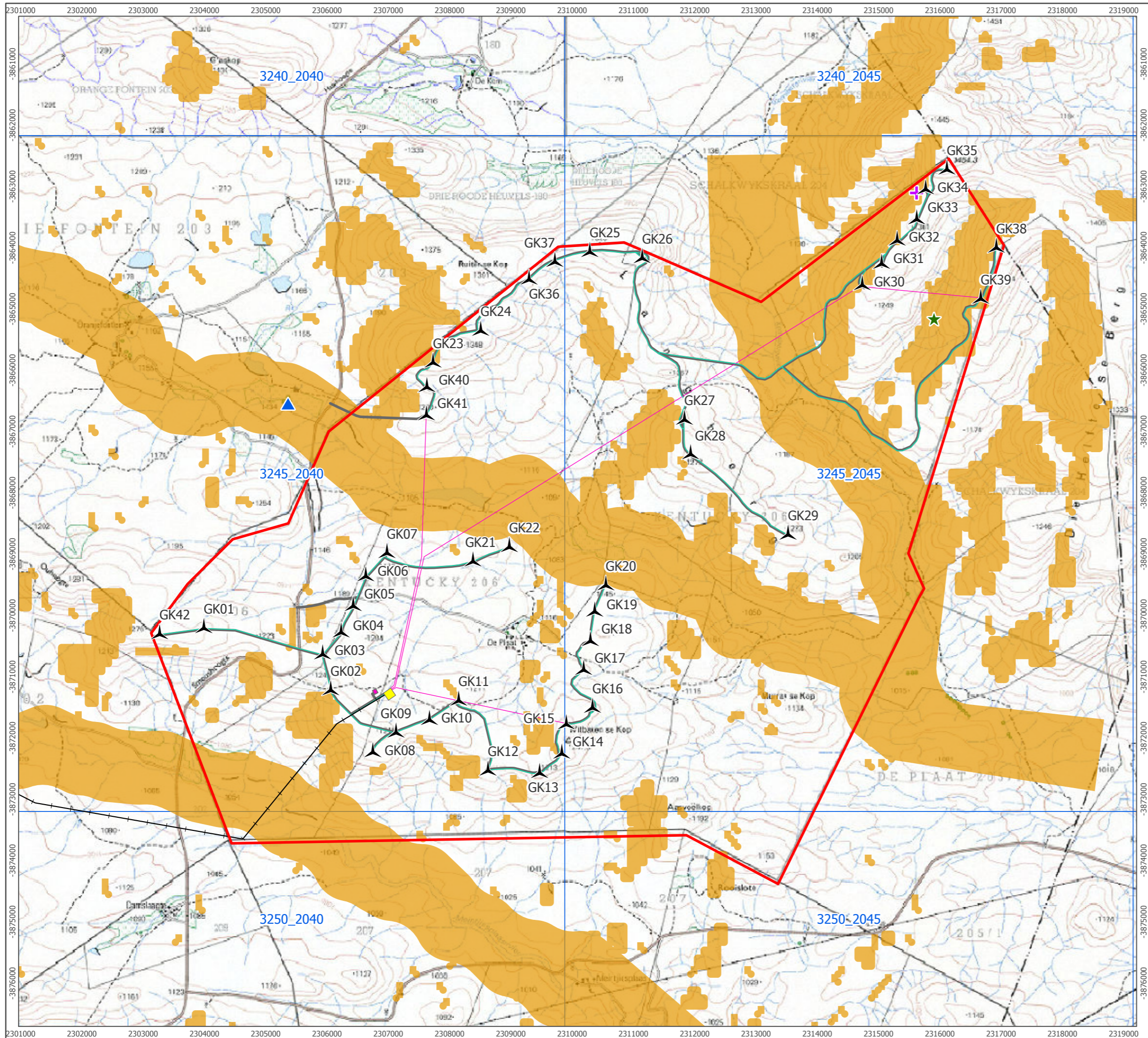
Layout

-  Turbines
-  MV reticulation
-  Existing HV Transmission
-  MV Overhead lines
-  Access Roads
-  Substation
-  O&M



Scale: 1:48 000
 Projection: LO19
 Map ref: Great Karoo WEF Layout Map_11.04.19





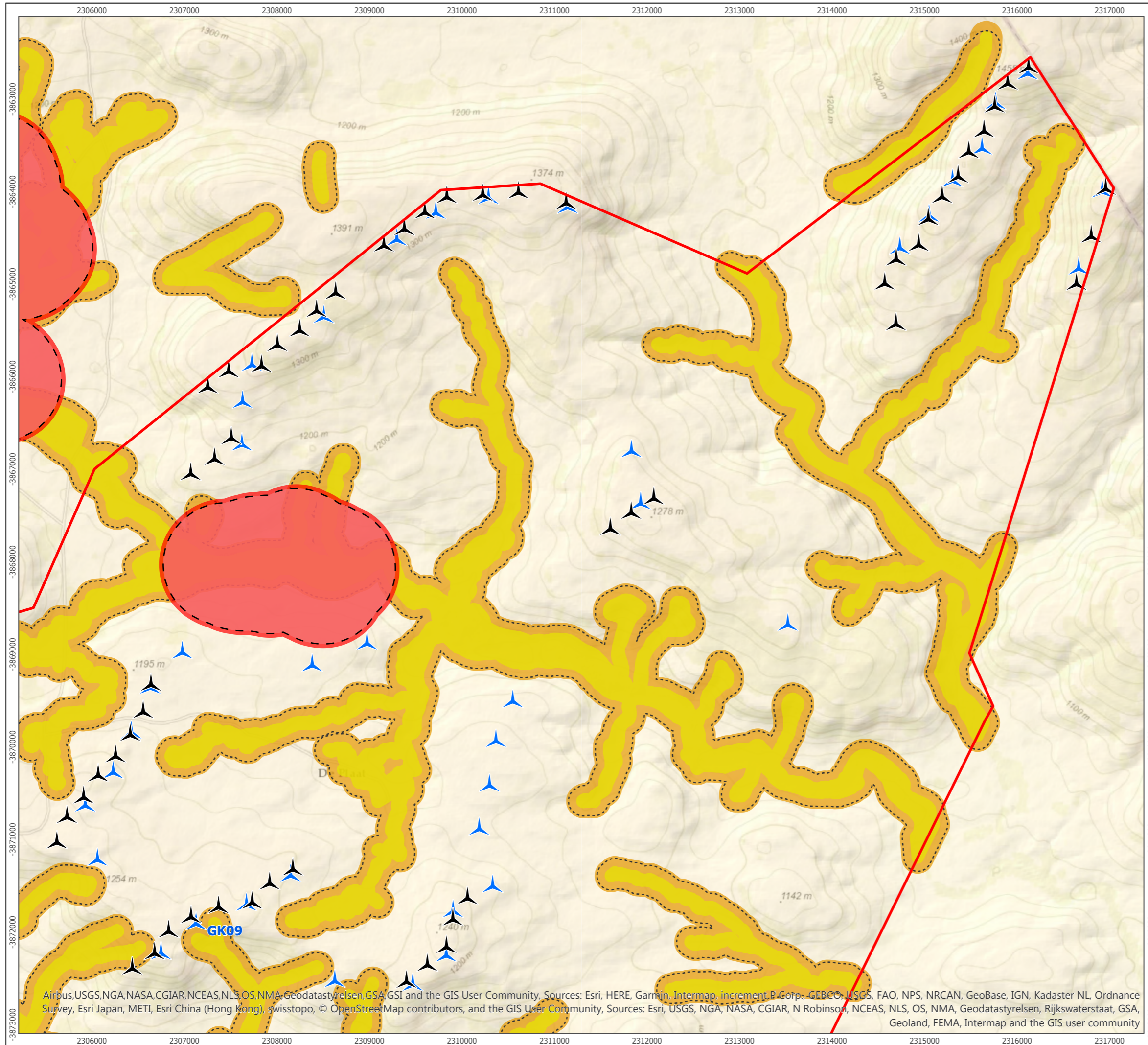
- Site Boundary
 - SABAP2 Pentads
 - Layout Being Applied For
 - HV Transmission (Existing)
 - MV Overhead
 - MV Reticulation
 - Roads (New)
 - O&M Building
 - Substation
 - Exclusion zones
- Nest Sites
- + N1
 - ★ N2
 - ▲ N3



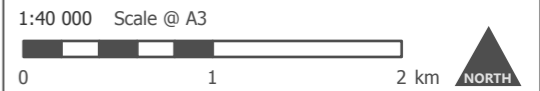
Produced By: MB	Ref: 2319-REP-002
Checked By: JA	Date: 26/02/2019

Proposed Turbine Layout, Exclusion Zones and SABAP2 Grid Squares
Figure 1

**Great Karoo WEF
Updated Bird Impact Assessment**



- Site Boundary
- ▲ Approved Turbine Layout
- ▲ Layout Being Applied For
- Current High Sensitivity Buffer (540m)
- Amended Minimum High Sensitivity Buffer Required (540m)
- Amended Maximum High Sensitivity Buffer Required (578m)
- Current Moderate Sensitivity Buffer (125m)
- Amended Minimum Moderate Sensitivity Buffer Required (56m)
- Amended Maximum Moderate Sensitivity Buffer Required (147m)



Produced By: JA	Ref: 2319-REP-001
Checked By: AB	Date: 07/02/2019

**Great Karoo Wind Farm
Turbine Layout Amendment
Figure 01**

**Great Karoo Wind Farm
Amendment Application
Impact Assessment**

Airbus,USGS,NGA,NASA,CGIAR,NCEAS,NLS,OS,NMA,Geodastystyrelsen,GSA,GSI and the GIS User Community, Sources: Esri, HERE, Garmin, Intermap, increment P Corp., GEBCO, USGS, FAO, NPS, NRCAN, GeoBase, IGN, Kadaster NL, Ordnance Survey, Esri Japan, METI, Esri China (Hong Kong), swisstopo, © OpenStreetMap contributors, and the GIS User Community, Sources: Esri, USGS, NGA, NASA, CGIAR, N Robinson, NCEAS, NLS, OS, NMA, Geodastystyrelsen, Rijkswaterstaat, GSA, Geoland, FEMA, Intermap and the GIS user community

Great Karoo Wind Energy Facility

Ecological Sensitivity Map



Legend

- Main roads
- Affected Property

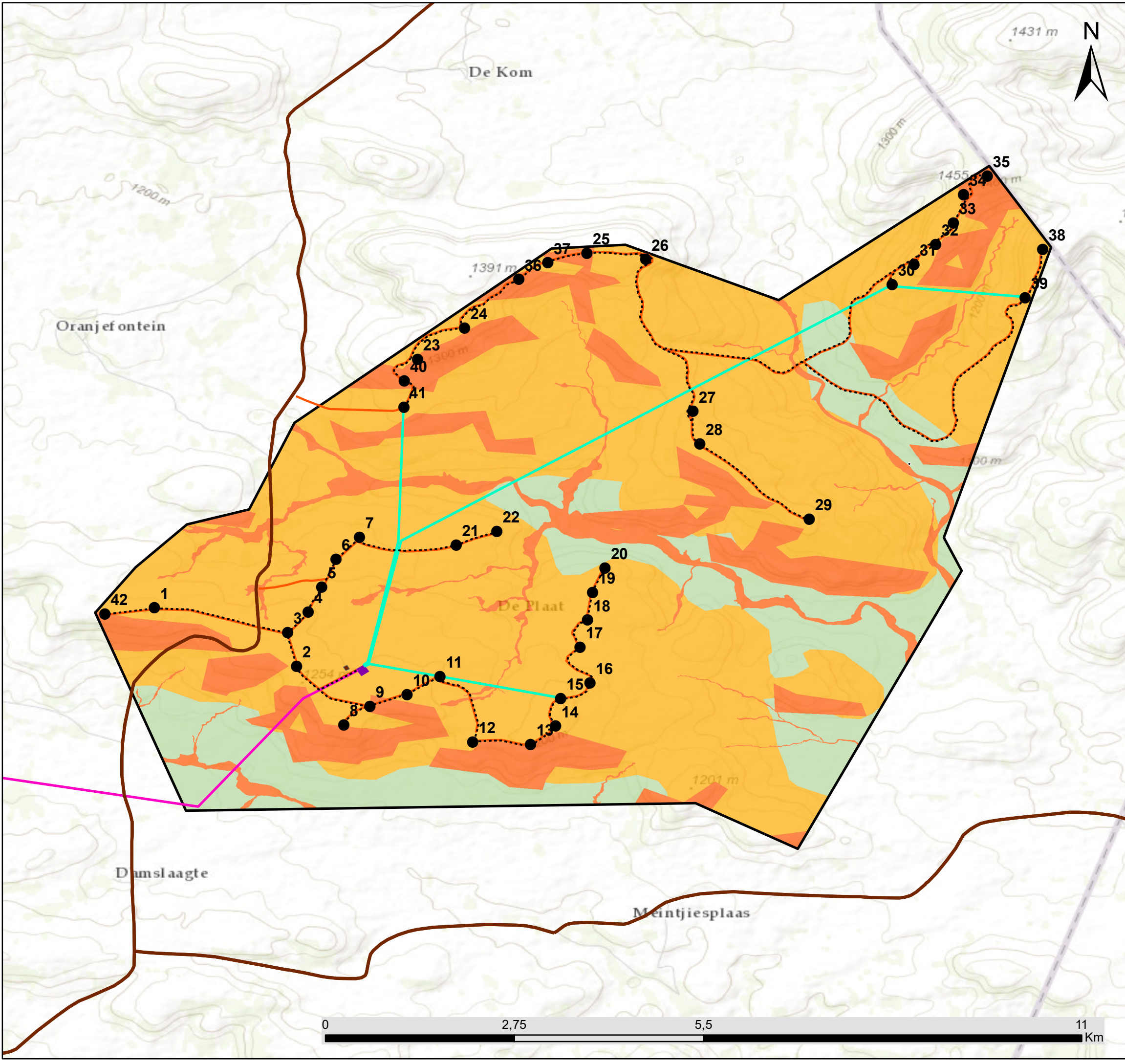
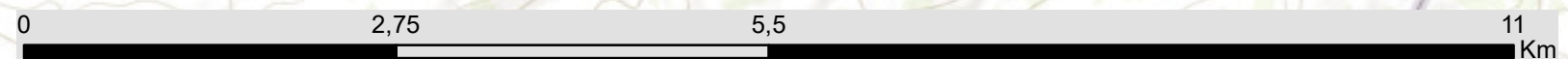
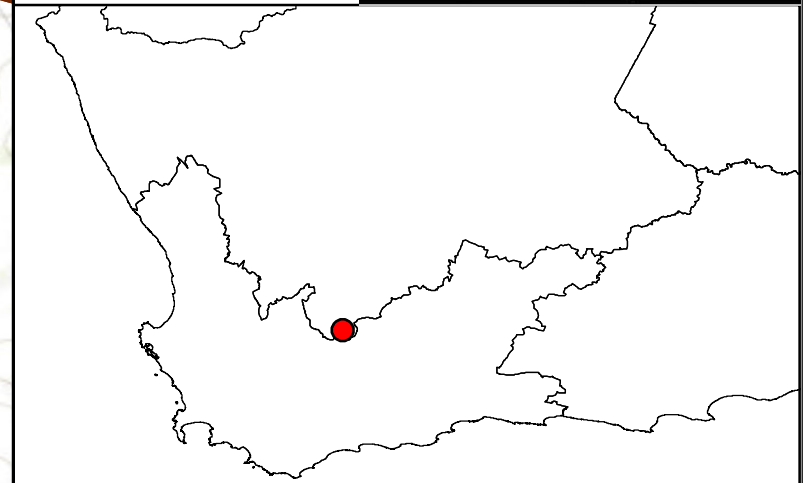
Layout

- Turbines
- MV reticulation
- Existing HV Transmission
- MV Overhead lines
- Access Roads
- Substation
- O&M

Ecological Sensitivity

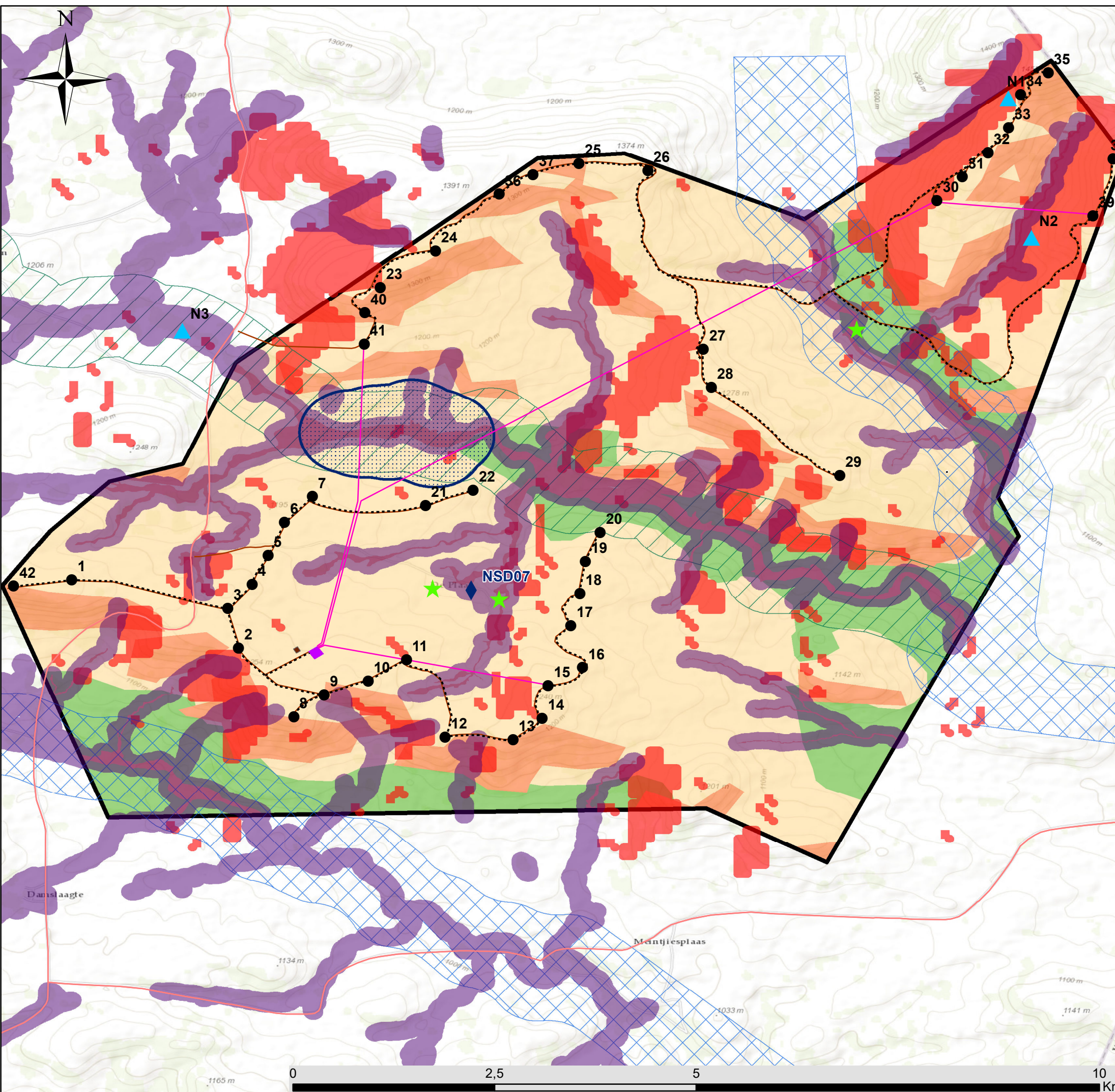
- HIGH
- MEDIUM-HIGH
- MEDIUM

Scale: 1:48 000
Projection: LO19
Map ref: Great Karoo CBA Map




Great Karoo WEF, Northern Cape


Environmental Sensitivity and 2019 Layout Map



Legend

- Main roads
 - Affected Property
- ### Layout
- Turbines (updated layout)
 - MV reticulation
 - MV Overhead lines
 - Access Roads
 - Substation
 - O&M
- ### Environmental Sensitivities
- ▲ Nest Sites
 - ◆ Noise Sensitive Development (NSD07)
 - ★ Heritage sites
 - Bat Sensitivity - 100m Moderate Sensitivity Buffer
 - Bat Sensitivity - 500m (High Sensitivity - Turbine No-Go Area)
 - Stream Buffers - 500m (High Sensitivity - Turbine No-Go Area)
 - River Buffer-500m (High Sensitivity - Turbine No-Go Area)
 - Avifaunal Exclusion Zones (High Sensitivity - Turbine No-Go Area)
- ### Ecological Sensitivity
- High
 - Medium-High
 - Medium

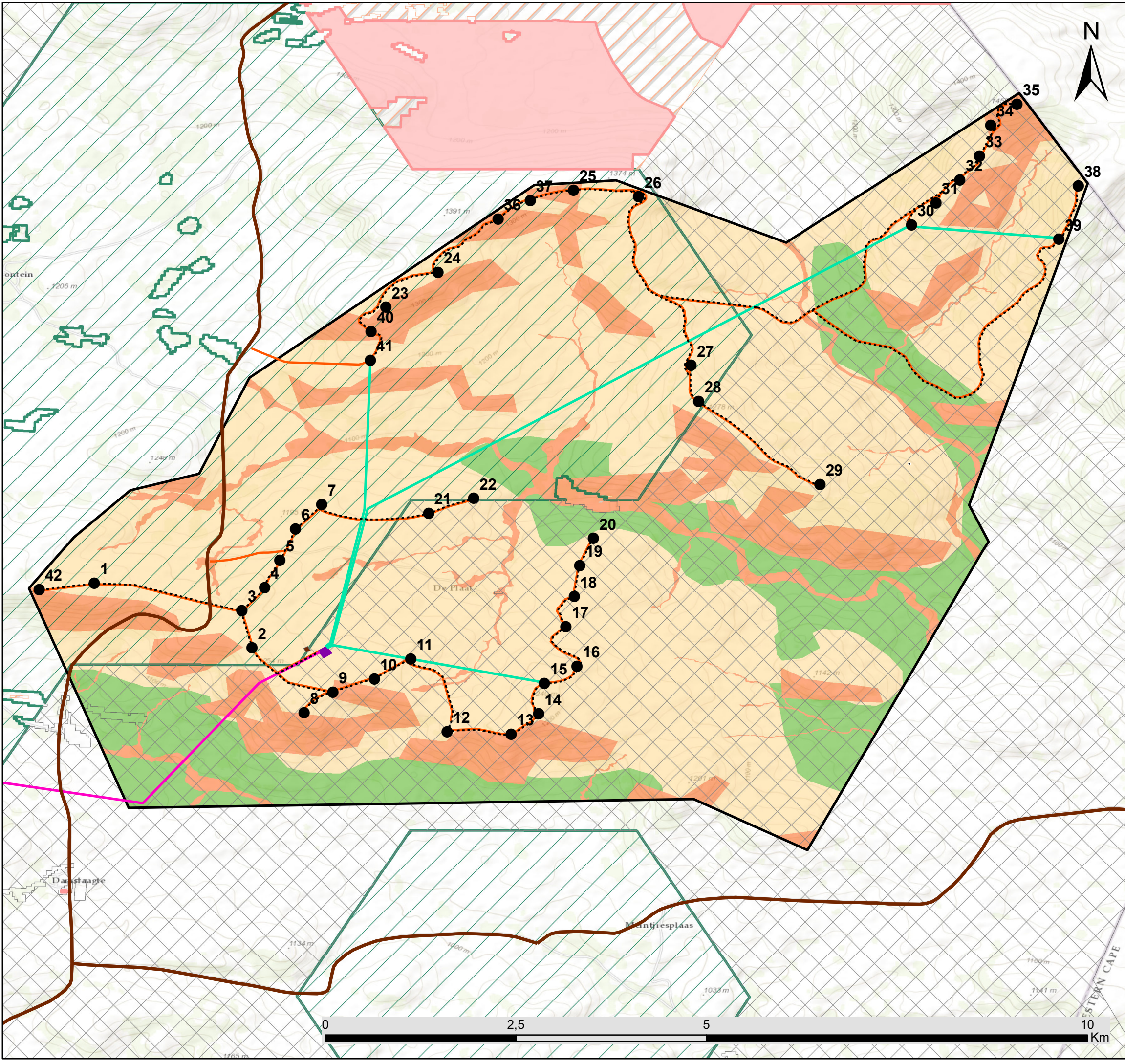




Scale: 1:48 000
 Projection: LO19
 Map ref: Great Karoo WEF 2019 Layout Map_05.07.19

Great Karoo WEF, Northern Cape

Environmental Sensitivity and Layout Map (CBAs)



Legend

- Main roads
- Affected Property

Layout

- Turbines
- MV reticulation
- Existing HV Transmission
- MV Overhead lines
- Access Roads
- Substation
- O&M

Environmental Sensitivities

Northern Cape CBA

- Critical Biodiversity Area One
- Critical Biodiversity Area Two
- Ecological Support Area
- Other Natural Areas

Ecological sensitivity

- HIGH
- MEDIUM-HIGH
- MEDIUM



Scale: 1:48 000
 Projection: LO19
 Map ref: Great Karoo WEF Layout and Env Sens Map_11.07.19

