

# Great Karoo Wind Energy Facility

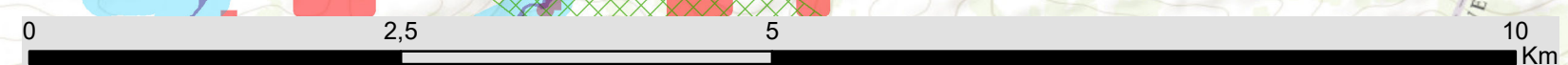
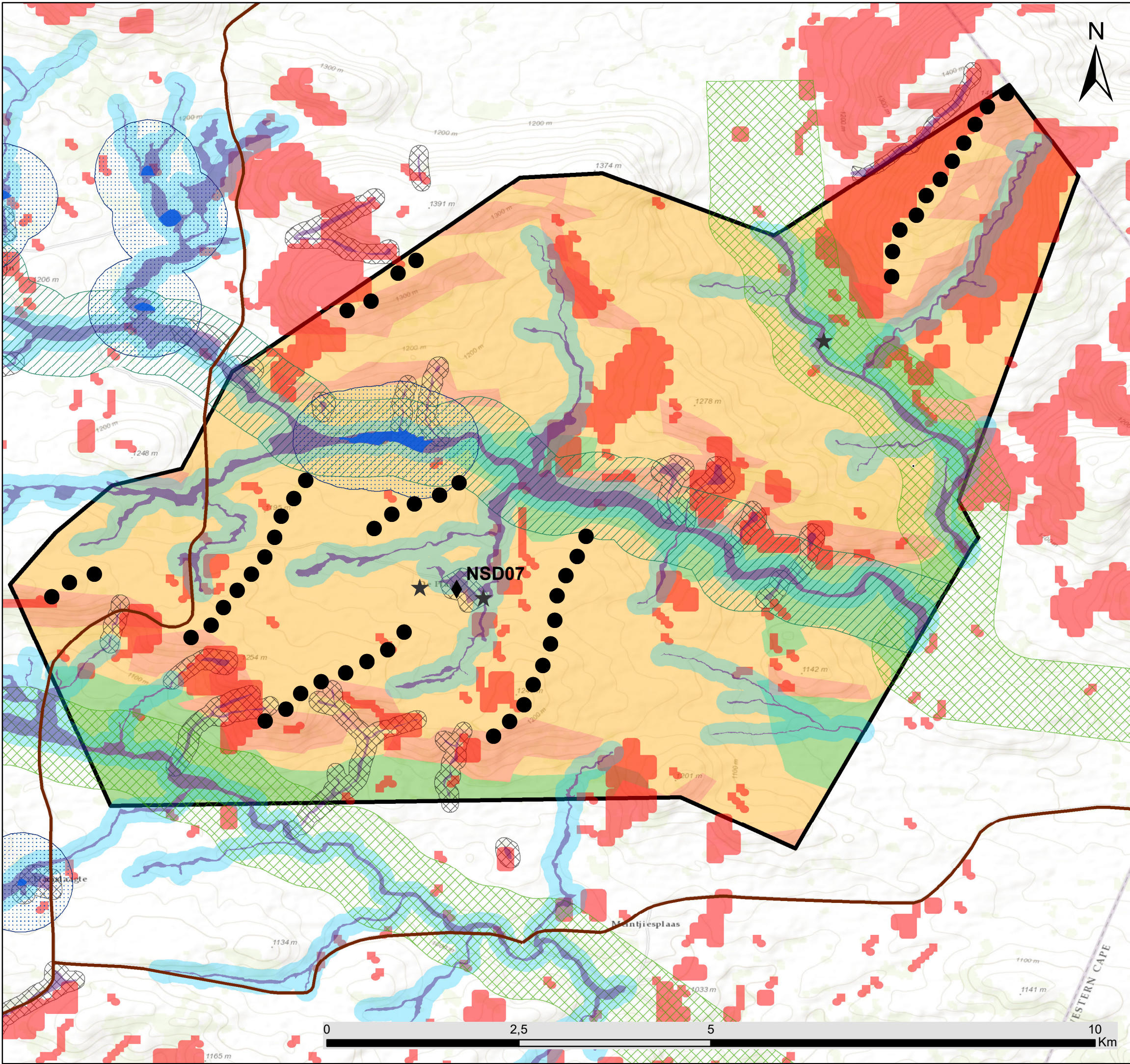
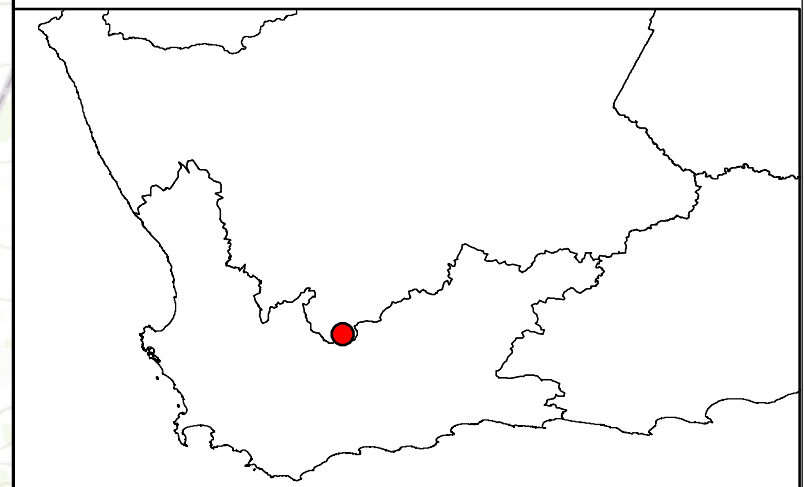
## 2016 Layout Map

### Legend

- Turbines
  - Main roads
  - Affected Property
- ### Environmental Sensitivities
- ◆ Noise Sensitive Development (NSD07)
  - ★ Heritage sites
  - Dams
  - Bat Sensitivity (Medium Sensitivity)
  - ▨ Bat Sensitivity Buffers
  - ▨ Farm dam buffer
  - ▨ Stream Buffers (High Sensitivity)
  - ▨ River Buffer-500m (High Sensitivity)
  - Drainage areas buffer
  - Avifaunal Exclusion Zones (High Sensitivity)
- ### Ecological Sensitivity
- High
  - Medium-High
  - Medium

Scale: 1:48 000  
Projection: LO19  
Map ref: Great Karoo WEF 2016 Layout Map\_11.04.19



savannah  
environmental










# Great Karoo Wind Energy Facility

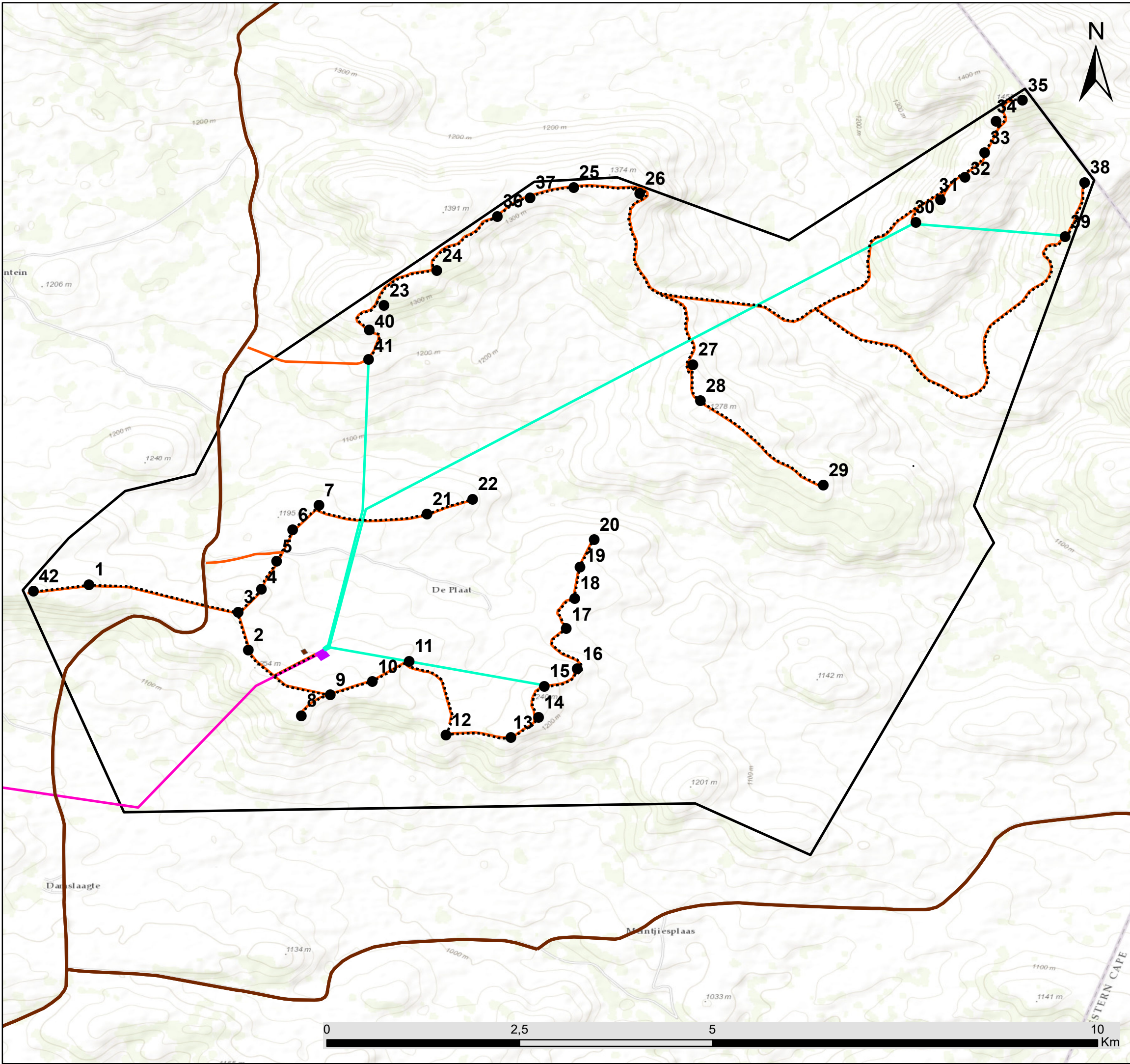
## Proposed New Layout Map

### Legend

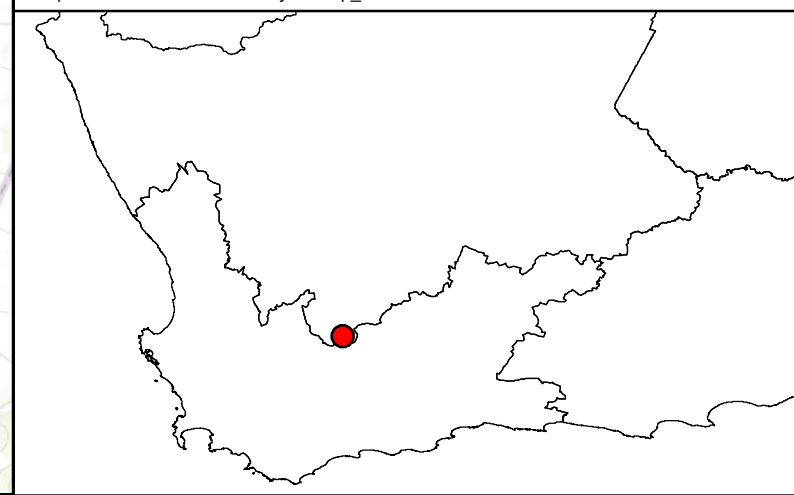
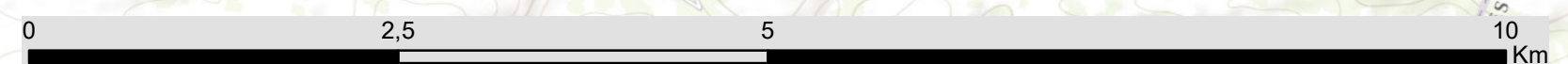
-  Main roads
-  Affected Property

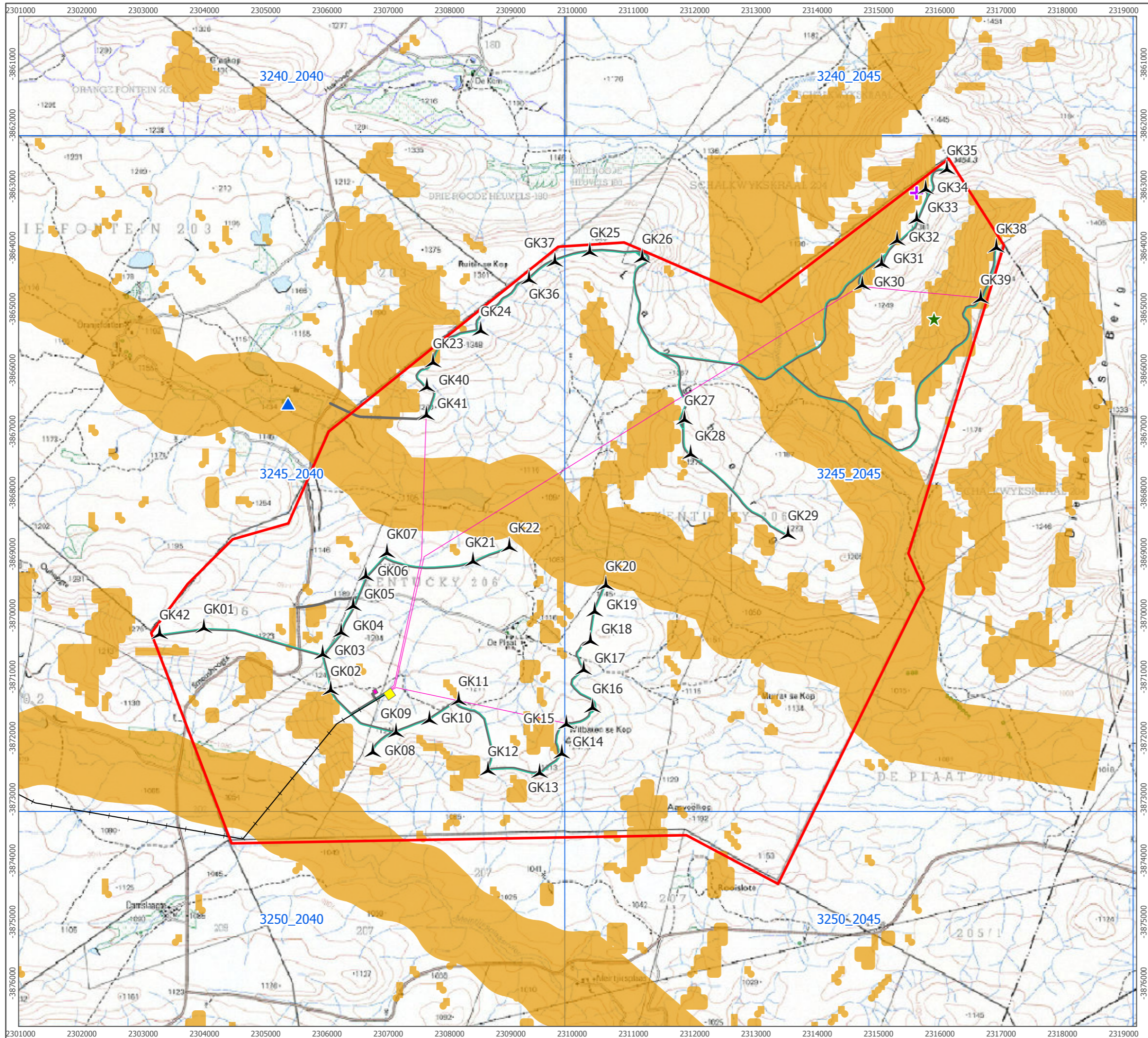
### Layout

-  Turbines
-  MV reticulation
-  Existing HV Transmission
-  MV Overhead lines
-  Access Roads
-  Substation
-  O&M



Scale: 1:48 000  
 Projection: LO19  
 Map ref: Great Karoo WEF Layout Map\_11.04.19





- Site Boundary
  - SABAP2 Pentads
  - Layout Being Applied For
  - HV Transmission (Existing)
  - MV Overhead
  - MV Reticulation
  - Roads (New)
  - O&M Building
  - Substation
  - Exclusion zones
- Nest Sites
- + N1
  - ★ N2
  - ▲ N3



Produced By: MB	Ref: 2319-REP-002
Checked By: JA	Date: 26/02/2019

**Proposed Turbine Layout, Exclusion Zones and SABAP2 Grid Squares**  
Figure 1

**Great Karoo WEF  
Updated Bird Impact Assessment**

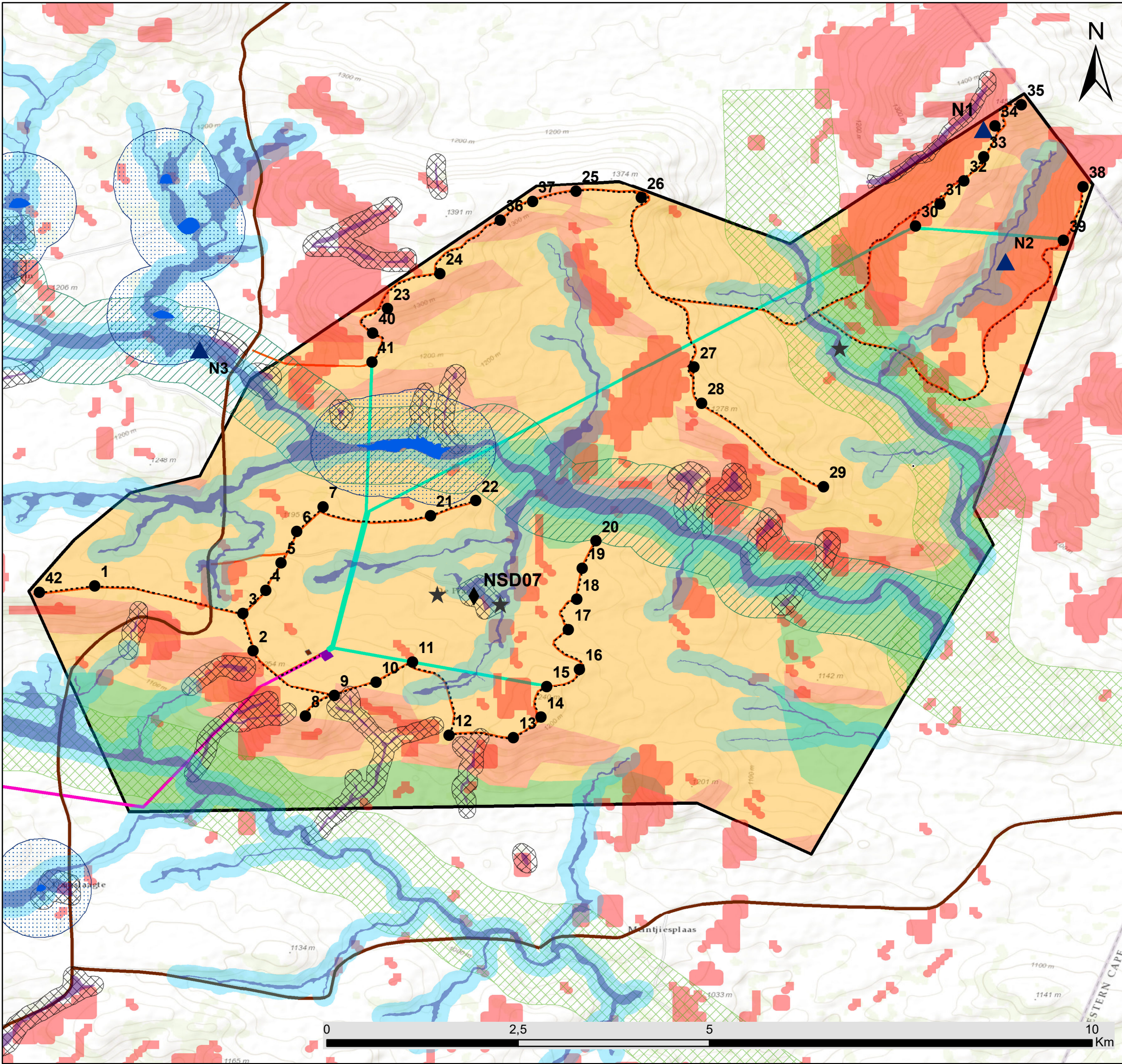
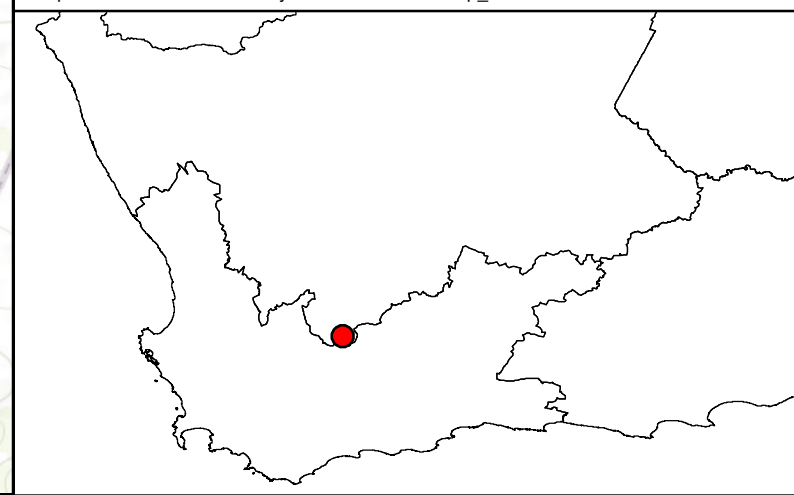
# Great Karoo Wind Energy Facility

## Environmental Sensitivity and Layout Map

### Legend

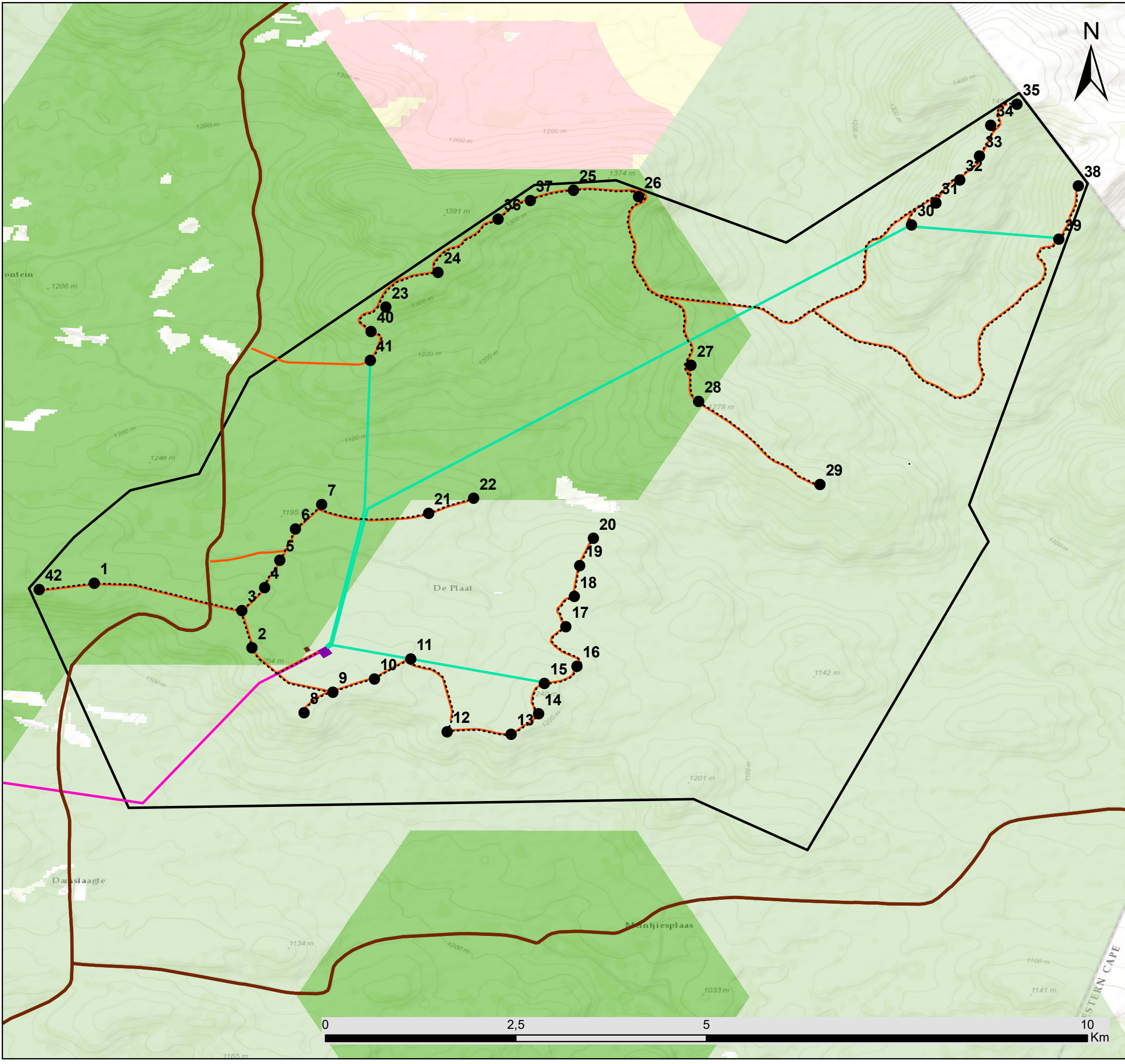
- Main roads
- Affected Property
- Layout**
- Turbines
- MV reticulation
- Existing HV Transmission
- MV Overhead lines
- Access Roads
- Substation
- O&M
- Environmental Sensitivities**
- Noise Sensitive Development (NSD07)
- Heritage sites
- Nests (N1-N3)
- Dams (high sensitivity)
- Dam buffer
- Drainage areas buffer
- Bat Sensitivity (Medium sensitivity)
- Bat Sensitivity Buffer: 100m
- River Buffer-500m -Exclusion Zone (High sensitivity)
- Stream Buffers - Exclusion Zone (High sensitivity)
- Avifaunal Exclusion Zones (High Sensitivity)
- Ecological sensitivity**
- HIGH
- MEDIUM-HIGH
- MEDIUM

Scale: 1:48 000  
 Projection: LO19  
 Map ref: Great Karoo WEF Layout and Env Sens Map\_11.04.19



# Great Karoo Wind Energy Facility

## Environmental Sensitivity and Layout Map (CBAs)



### Legend

- Main roads
- Affected Property

### Layout

- Turbines
- MV reticulation
- Existing HV Transmission
- MV Overhead lines
- Access Roads
- Substation
- O&M

### Environmental Sensitivities

#### Northern Cape CBA

- Critical Biodiversity Area One
- Critical Biodiversity Area Two
- Ecological Support Area
- Other Natural Areas

Scale: 1:48 000  
 Projection: LO19  
 Map ref: Great Karoo WEF Layout and Env Sens Map\_11.04.19

