

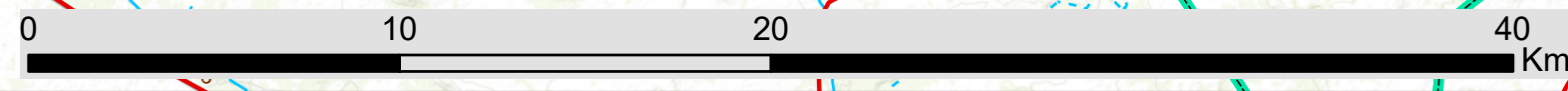
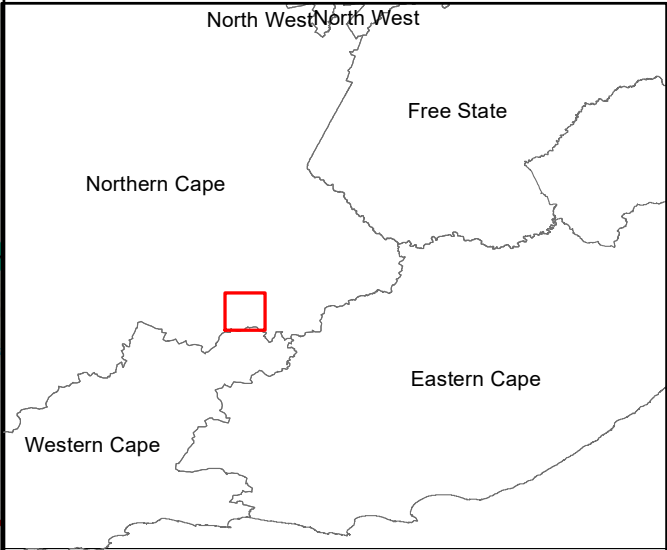
Great Karoo EGI Northern Cape Province

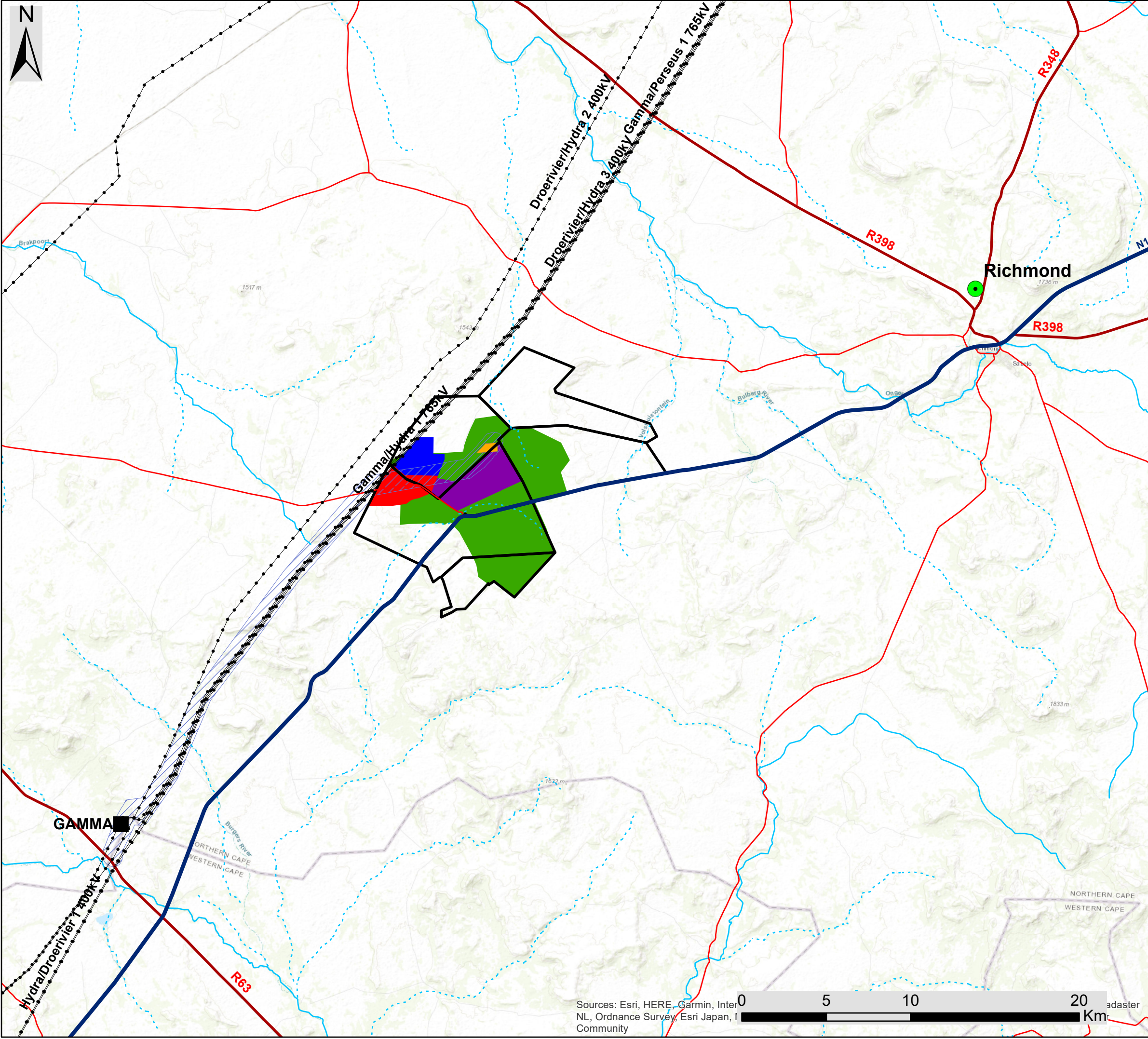
Locality Map

Legend

- Towns
 - Eskom Substation
 - Existing Power Line
 - Main Road
 - National_Route
 - - - Non-Perennial River
 - Perennial River
 - Project Site
 - Provincial Boundary
- ### Grid Connection Infrastructure
- 132kV Power Line
 - Gamma Substation
 - Collector Substation
 - Grid Connection Corridor (1km)

Scale: 1: 200 00
 Projection: GCS_WGS_1984
 Map Ref: Great Karoo Grid - Locality











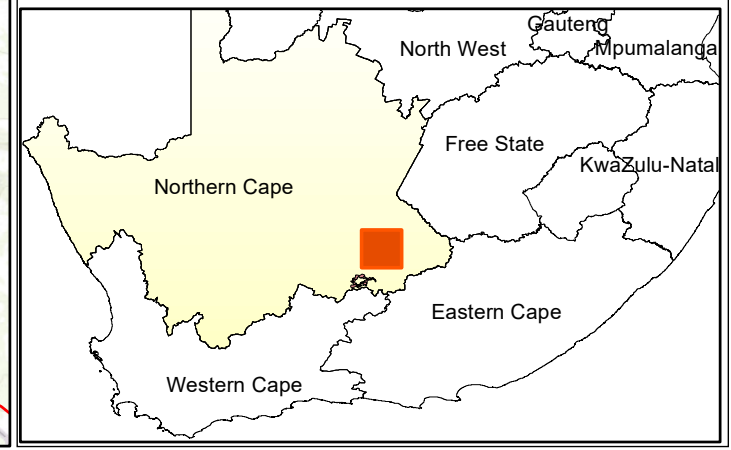
**Proposed Greater Karoo
Renewable Energy Cluster,
Richmond, Northern Cape Province**

Locality Map

Legend

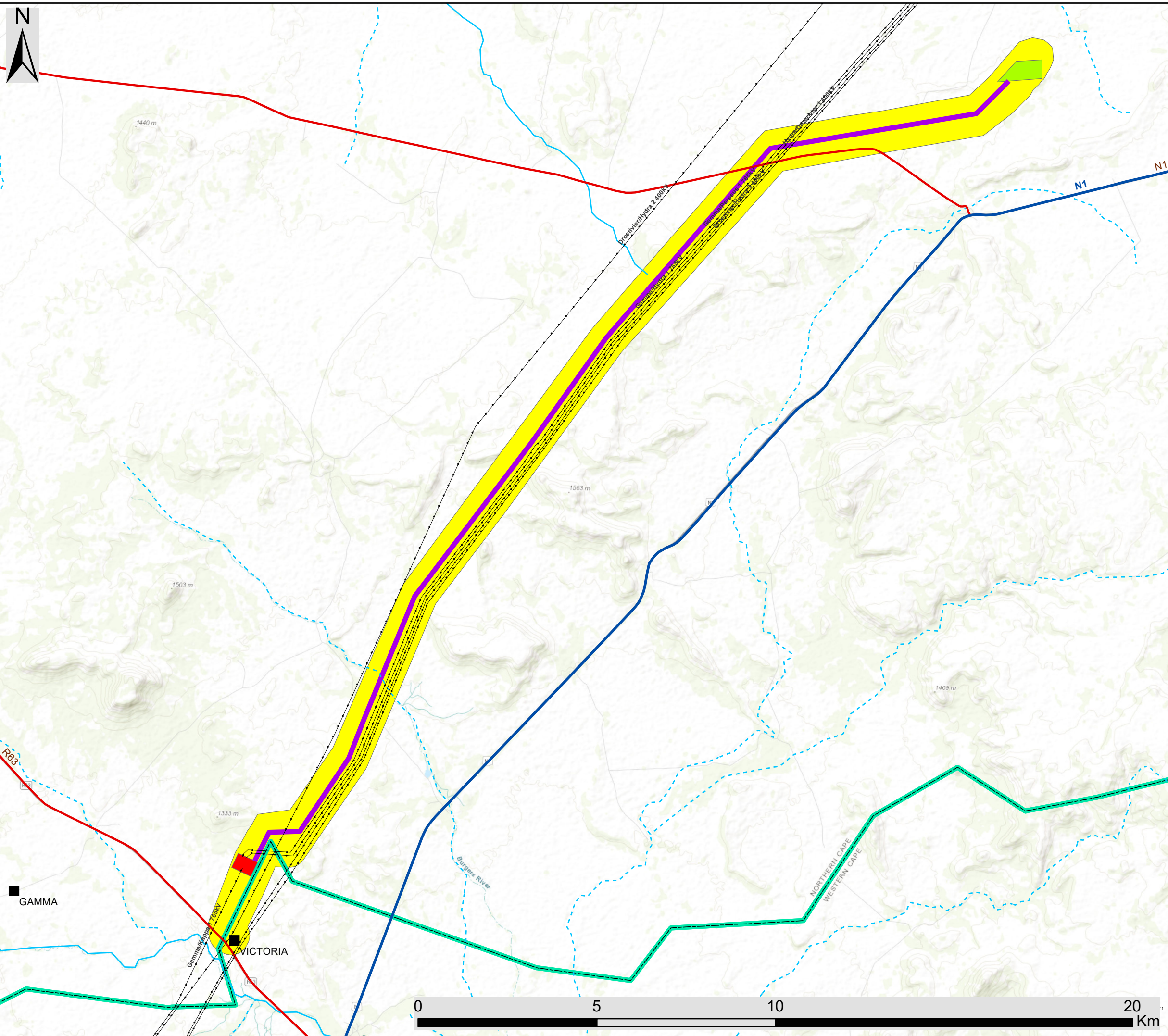
-  Town
-  Eskom Substation
-  Existing Power Line
-  National Road
-  Regional Road
-  Main Road
-  Non-Perennial River
-  Perennial River
-  Nku Solar PV
-  Moriri Solar PV
-  Kwana Solar PV
-  Merino Wind Farm
-  Collector Substation
-  Grid Connection Corridor (1km wide)
-  Project Sites

Scale: 1: 250 000
 Projection: WGS_1984
 Map Ref: Great Karoo BID - Locality



Sources: Esri, HERE, Garmin, Inter
 NL, Ordnance Survey, Esri Japan, I
 Community

0 5 10 20 Km



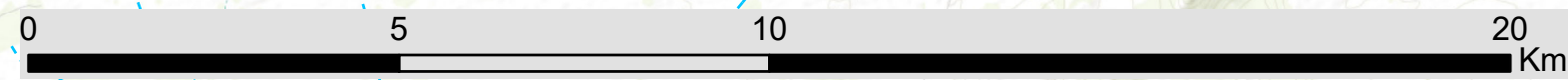
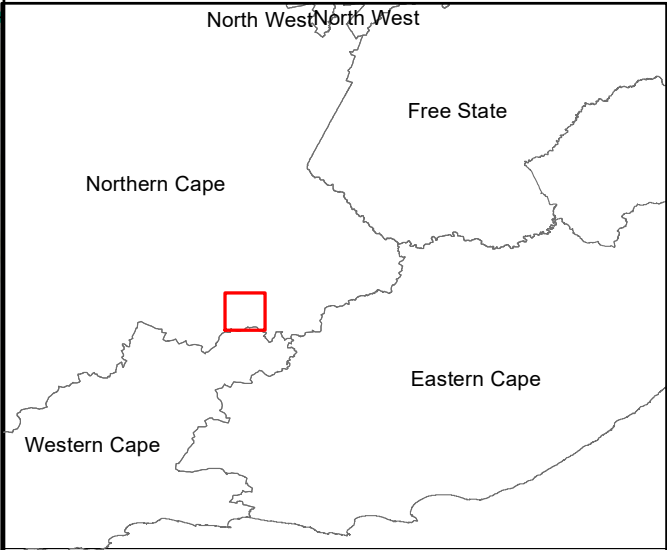
Great Karoo EGI Northern Cape Province

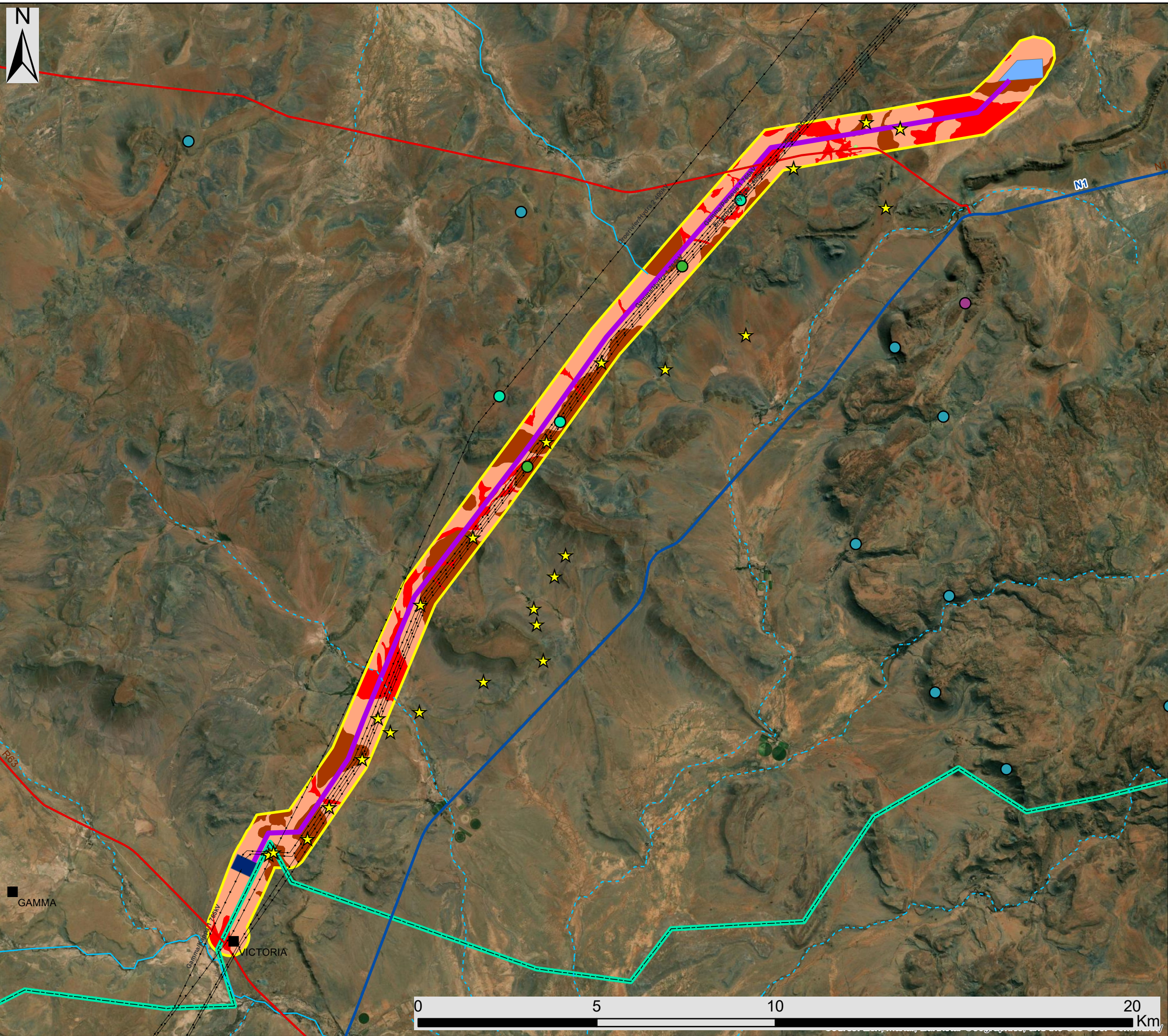
Layout Map

Legend

- Eskom Substation
- Existing Power Line
- Main Road
- National_Route
- - - Non-Perennial River
- Perennial River
- ▭ Provincial Boundary
- Grid Connection Infrastructure**
- 132kV Power Line
- Gamma Substation
- Collector Substation
- Grid Connection Corridor (1km)

Scale: 1: 200 00
 Projection: GCS_WGS_1984
 Map Ref: Great Karoo Grid - Layout





Great Karoo EGI Northern Cape Province

Sensitivity Map

Legend

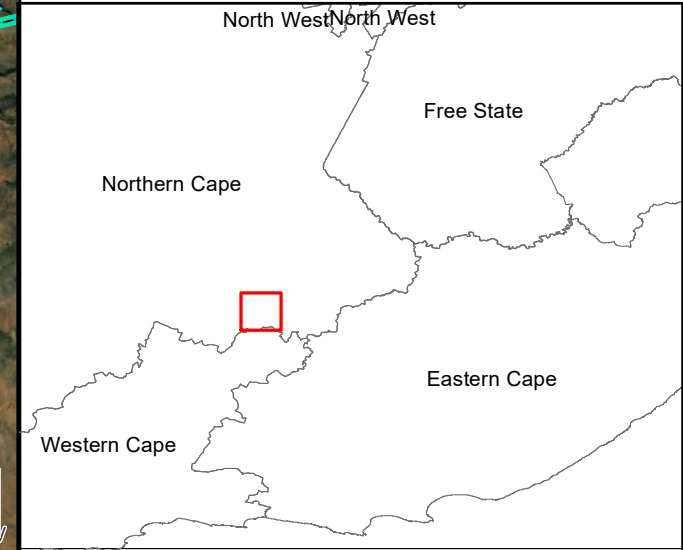
- Eskom Substation
- Existing Power Line
- Main Road
- National_Route
- - - Non-Perennial River
- Perennial River
- ▭ Provincial Boundary
- Grid Connection Infrastructure**
- 132kV Power Line
- Gamma Substation
- Collector Substation
- ▭ Grid Connection Corridor (1km)

Environmental Sensitivities

- Jackal Buzzard Nests
- Martial Eagle Nests
- Tawny Eagle Nests
- Verreaux's Eagle Nests
- ★ Archaeology
- Drainage (High Ecological Sensitivity)
- Mountain slopes (Medium- High Ecological Sensitivity)
- Karroid plains (Medium Ecological Sensitivity)
- Roads (Low Ecological Sensitivity)



Scale: 1: 200 00
 Projection: GCS_WGS_1984
 Map Ref: Great Karoo Grid - Sensitivity



GAMMA
 VICTORIA

