



Plate 1: Taken towards the north.
Plate 8: Taken towards the north west.



Plate 2: Taken towards the north east.
Plate 7: Taken towards the west.



Plate 3: Taken towards the east.
Plate 6: Taken towards the south west.



Plate 4: Taken towards the south east.
Plate 5: Taken towards the south.



Plate 9: Power Line will cross over the S1159.



Plate 10: Power Line will cross over the R48.



Plate 11: NFEPA Wetland within 200m corridor.



Plate 12: Power Line will cross over the canal twice.



Plate 13: Rocky outcrop.

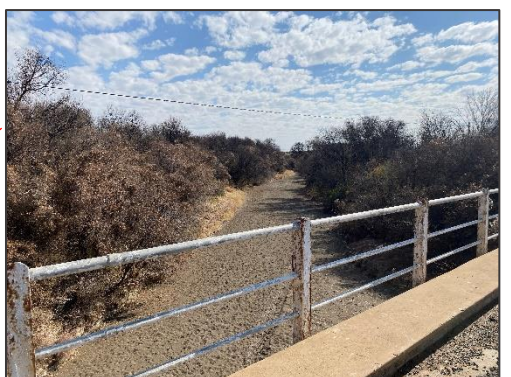
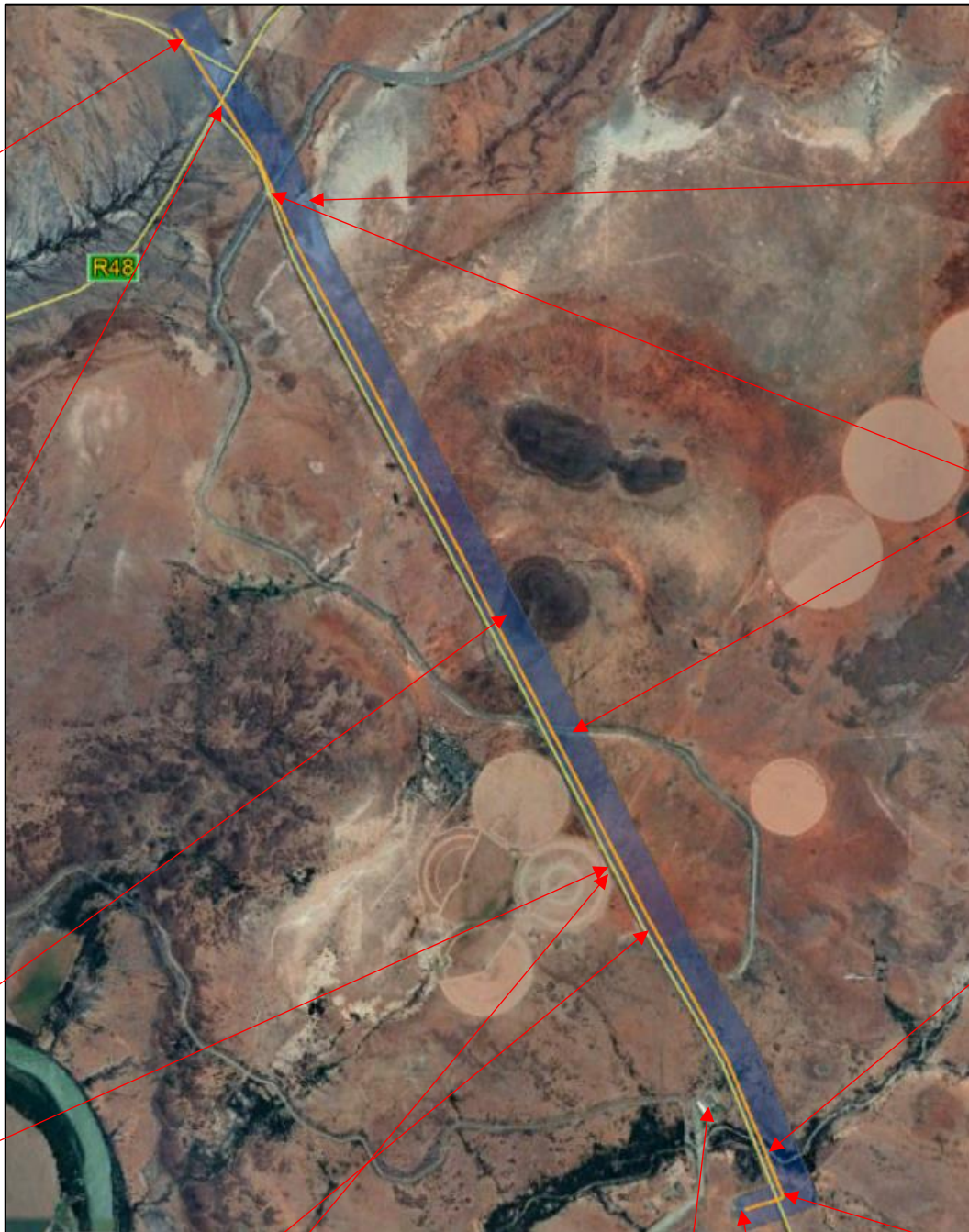


Plate 20: Power Line crossing the non-perennial river.



Plate 14: View of the P70 and power line corridor taken towards the north.

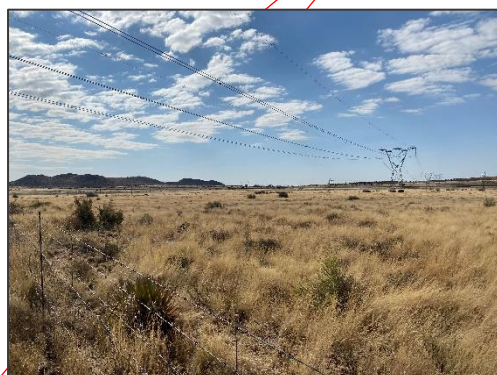


Plate 16: Power Line will pass underneath existing PL Infrastructure.



Plate 19: Canal Substation.



Plate 21: Power Line crossing the P70 Road to Van der Kloof Dam.



Plate 15: Crop circles.



Plate 17: Aloe located within corridor.



Plate 18: Scheiding Pump Station.