







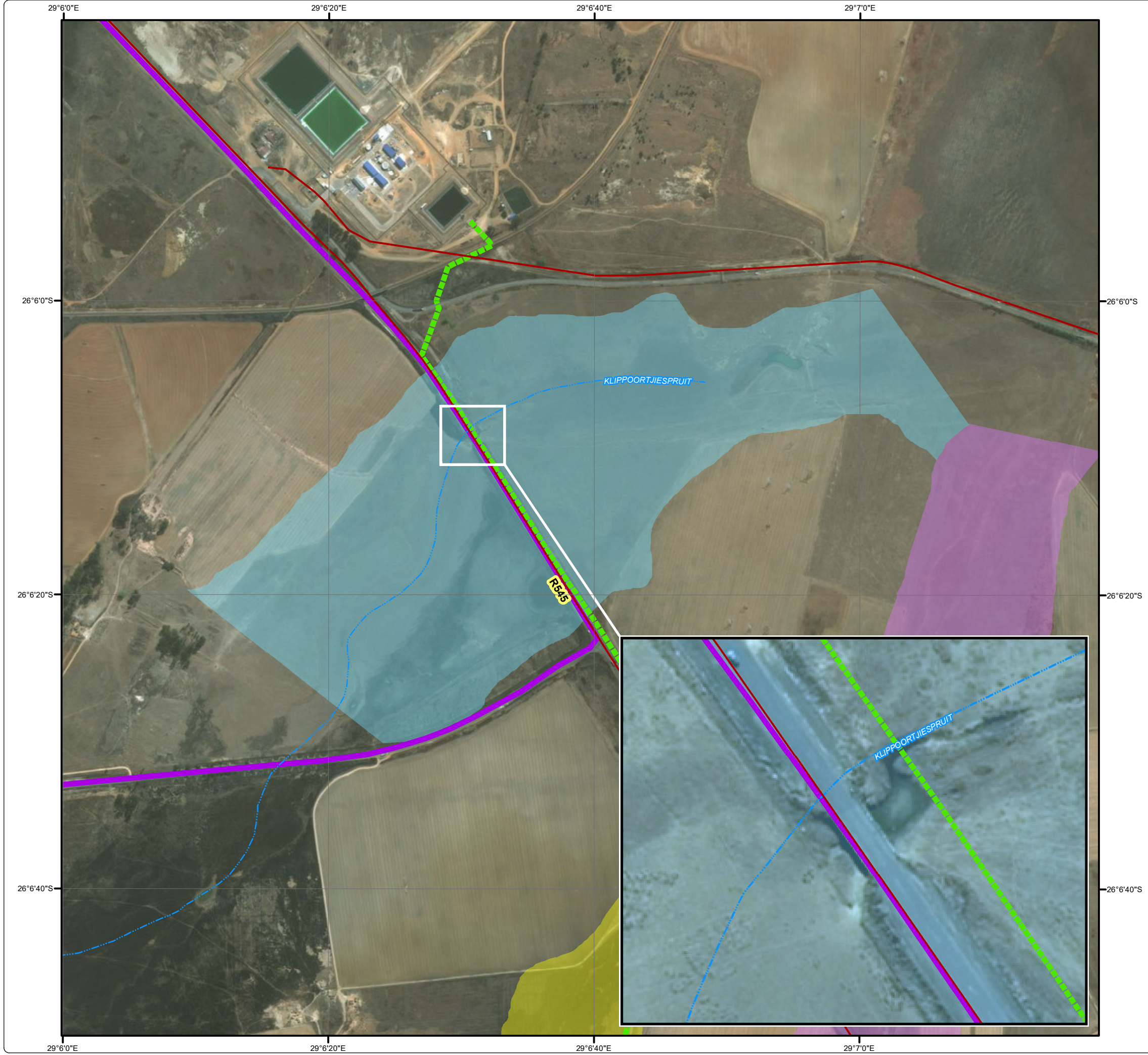


Glencore Mbali Pipeline

HGM Unit 1 River Crossing

Legend


-  Goedgevonden Mine
 -  Proposed Mbali Pipeline
 -  Main Road
 -  Perennial Stream
- ### Wetland Delineation
-  HGM Unit 1
 -  HGM Unit 2
 -  HGM Unit 3



DIGBY WELLS
ENVIRONMENTAL

• Sustainability • Service • Positive Change • Professionalism • Future Focused • Integrity

Projection: Transverse Mercator Ref #: kam.HCI4929.201802.013
Datum: WGS 1984 Revision Number: 1
Central Meridian: 29°E Date: 15/02/2018

 0 100 200 400
Metres
1:8 000

www.digbywells.com © Digby Wells Environmental