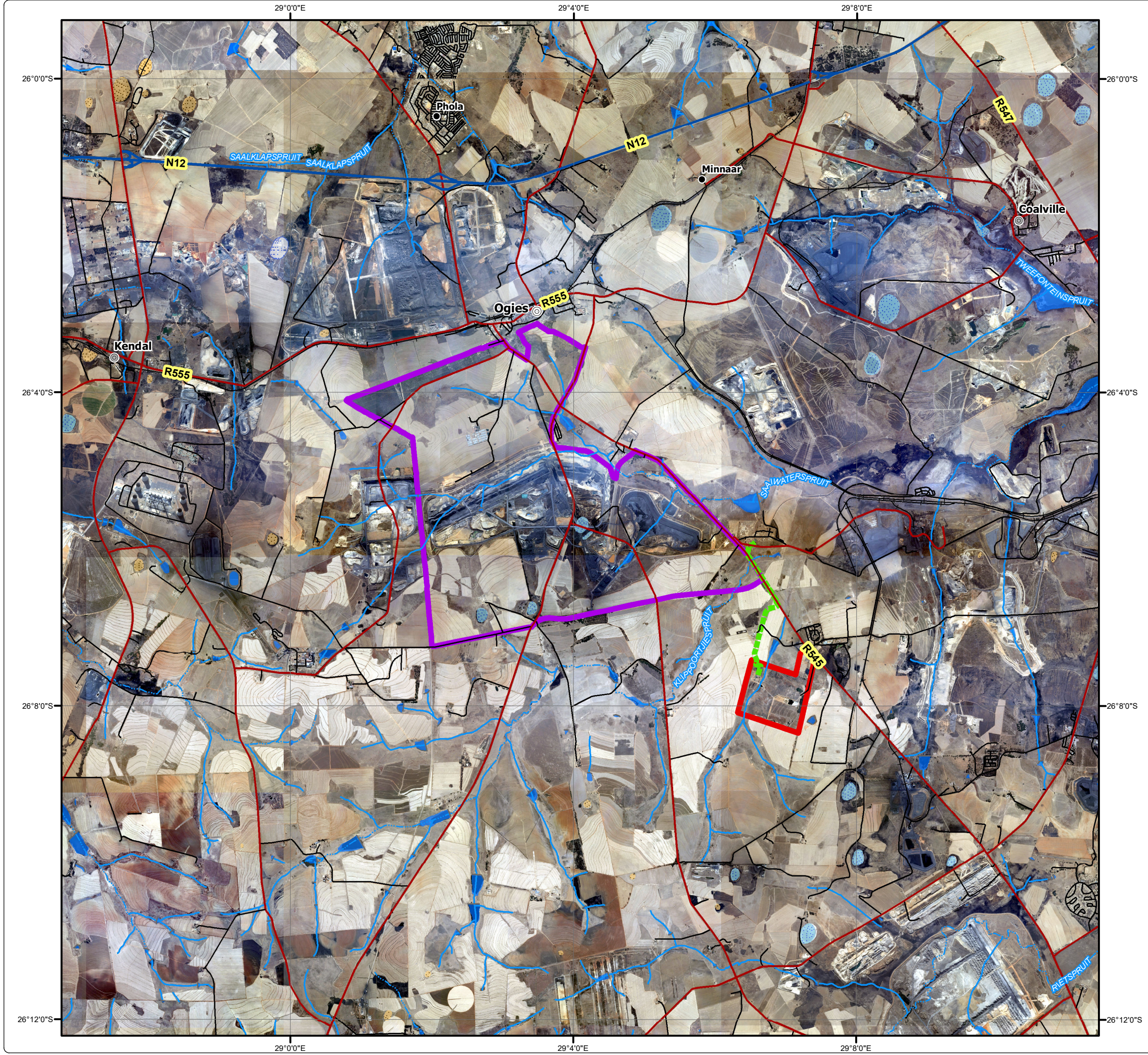


# Glencore Mbali Pipeline

## Local Setting

### Legend

- Mbali Colliery
- Goedgevonden Mine
- Proposed Mbali Pipeline
- Secondary Town
- Other Town
- Settlement
- Arterial/National Road
- Main Road
- Minor Road
- Railway Line
- Non-Perennial Stream
- Perennial Stream
- Dam Wall
- Dam / Lake
- Non-Perennial Pan
- Perennial Pan



**DIGBY WELLS**  
ENVIRONMENTAL

• Sustainability • Service • Positive Change • Professionalism • Future Focused • Integrity

Projection: Transverse Mercator	Ref #: kam.HCI4929.201711.083
Datum: WGS 1984	Revision Number: 1
Central Meridian: 29°E	Date: 18/01/2018

