



# Glencore Mbali Pipeline

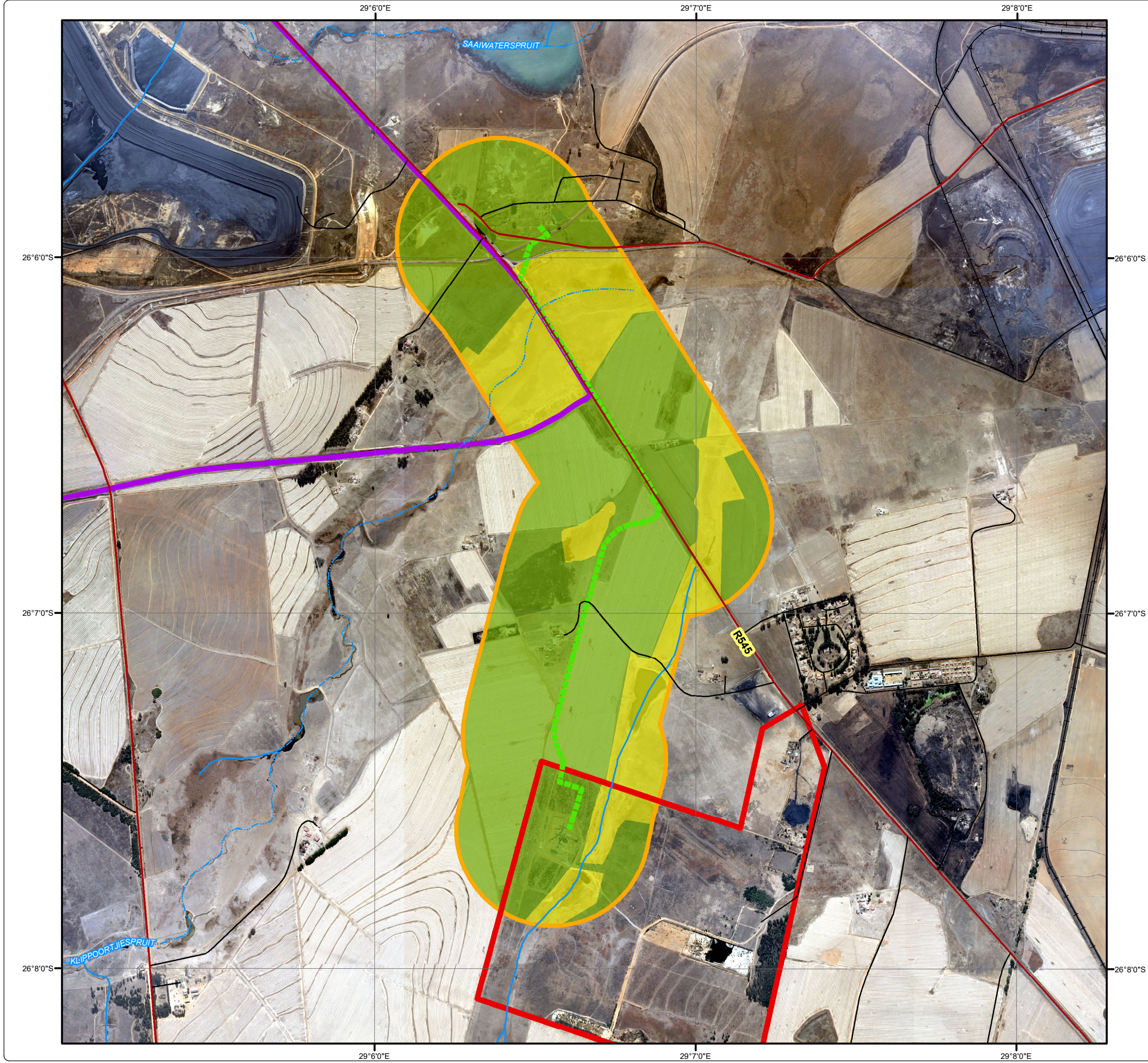
## Flora Habitat Sensitivity

### Legend

-  Mbali Colliery
-  Goedgevonden Mine
-  Proposed Mbali Pipeline
-  500m Buffer of Proposed Mbali Pipeline
-  Main Road
-  Minor Road
-  Railway Line
-  Non-Perennial Stream
-  Perennial Stream

### Habitat Sensitivity

-  Low / No Sensitivity
-  Medium Sensitivity



DIGBY WELLS ENVIRONMENTAL

• Sustainability • Service • Positive Change • Professionalism • Future Focused • Integrity

Projection: Transverse Mercator      Ref #: kam.HCI4929.201801.028  
 Datum: WGS 1984                              Revision Number: 1  
 Central Meridian: 29°E                        Date: 19/01/2018

