

NOTICE

APPLICATIONS FOR ENVIRONMENTAL AUTHORISATION, WASTE MANAGEMENT LICENCE AND ATMOSPHERIC EMISSIONS LICENCE PROCESSES FOR THE PROPOSED HEALTH CARE RISK WASTE (HCRW) TREATMENT IN SETLOPO VILLAGE, MAHIKENG LOCAL MUNICIPALITY, NORTHWEST PROVINCE

Notice is hereby given that Greenearth Environmental Services (Pty) Ltd is proposing to undertake the above-mentioned processes in Setlopo Village in terms of:

- Section 24 of the National Environmental Management Act (NEMA), 1998 (Act No. 107 of 2008);
- Section 19 of the National Environmental Management: Waste Act (NEM:WA), 2008 (Act No. 59 of 2008); and
- Section 21 of the National Environmental Management: Air Quality Act (NEM:AQA), 2004 (Act No. 39 of 2004).

The treatment plant will process a maximum of approximately 365 tonnes annually (but less than (1) tonne/day) of health care risk waste (i.e. medical waste). The proposed incinerator will be largely automated with minimal operator intervention required. The system will cover feeding intervals, temperature control, flue gas cooling, scrubbing and filtration.

Greenearth Environmental Services (Pty) has therefore appointed Qpoint Group (Pty) Ltd as independent Environmental Consultants, to undertake the Applications for the Environmental Authorisation (EA), Waste Management Licence (WML) as well as the Atmospheric Emissions Licence (AEL) Application Processes.

Project Location and triggered activities

The project is proposed on stand no. 9310 in Setlopo Village in Ward 35 of the Mahikeng Local Municipality. The property is located almost 10km south-east of the Mahikeng CBD and the project site's approximate centre coordinates are 25°55'33.21"S; 25°39'40.65"E. The triggered activities for the project are: activity 27 of the NEMA Environmental Impact Assessment (EIA) Regulations, 2014; activities 7 and 12 under Category A under NEM:WA 2013 *List of waste management activities that have, or are likely to have, a detrimental effect on the environment*; and subcategory 8.2 under the NEM:AQA 2013 *List of activities which result in atmospheric emissions*.

KITSISO

DIKOPO TSA TUMELELO YA TIKOLOGO, LAESENSE YA TLHOKOMELO YA MATLAKALA LE TIRO YA LAESENSE YA NTSHETSO-LOAPING YA TIRELO E E ATLENEGISIWANG YA TLHOKOMELO YA KOTSI YA MATLAKALA (HCRW) MO MOTSENG WA SETLOPO, MO MMASEPALENG WA SELEGAE WA MAHIKENG, MO POROFENSENG YA BOKONE BOPHIRIMA

Go newa kitsiso ya gore Greenearth Environmental Services (Pty) Ltd e akantsha go dira ditiro tse di umakilweng fa godimo mo Motseng wa Setlopo go dumalana le:

- Karolo 24 ya Molawana wa Tlhokomelo ya Tikologo ya Bosetšhaba (NEMA), 1998 (Molawana No. 107 wa 2008);
- Karolo 19 ya Tlhokomelo ya Tikologo ya Bosetšhaba: Molawana wa Matlakala (NEM:WA), 2008 (Molawana No. 59 wa 2008); le
- Karolo 21 ya Tlhokomelo ya Tikologo ya Bosetšhaba: Molawana wa Boleng jwa Mowa (NEM:AQA), 2004 (Molawana No. 39 wa 2004).

Lefelo la tlhokomelo le tla tlogisa bogolo jwa ditone di ka nna 365 ka ngwaga (mme kwa tlase ga tone (1)/letsatsi) ya matlakala a a kotsi a tlhokomelo ya itekanelo (ke gore matlakala a kalafi). Lefelo leno le le akantshiwang le tla itirisa ka bolone mme go tla tlhokega tsenelelo e e seng kalo. Thulaganyo e tla akaretsa dinako tsa go fepa, go laola themperetšha, go tsidifatsa mosi wa gase, go gotlha le go tlhotlha.

Ka jalo Greenearth Environmental Services (Pty) e tlohile Qpoint Group (Pty) Ltd jaaka Badiredi ba ba ikemetseng ba Tikologo, go dira Dikopo tsa Tumelelo ya Tikologo (EA), Laesense ya go Tlhokomela Matlakala (WML) mmogo le Laesense ya Ntshetso-ntle mo Loaping (AEL).

Lefelo la Porojeke le ditiro tse di amegang

Porojeke eno e akantshiwa mo setsha no. 9310 mo Motseng wa Setlopo mo Ward 35 ya Mmasepala wa Selegae wa Mahikeng. Lefelo leno le dikilometara di ka nna 10 kwa borwa-botlhaba jwa Toropo ya Mahikeng mme ditshupo tsa lefelo ke 25°55'33.21"S; 25°39'40.65"E. Ditiro tse di amegang tsa porojeke ke: tiro 27 ya Molawana ya Tlhatlhubo ya go Amega ga Tikologo ya NEMA (EIA), 2014; ditiro 7 le 12 kafa tlase ga Karolo A kafa tlase ga NEM:WA 2013 *Lenaane la ditiro tsa tlhokomelo ya matlakala tse di amang, kgotsa tse go ka diregang gore di ametikologo thata*; le karolo e e kwa tlase ya 8.2 kafa tlase ga NEM:AQA 2013 *Lenaane la ditiro tse di felelang ka go ntshediwa mo loaping*.

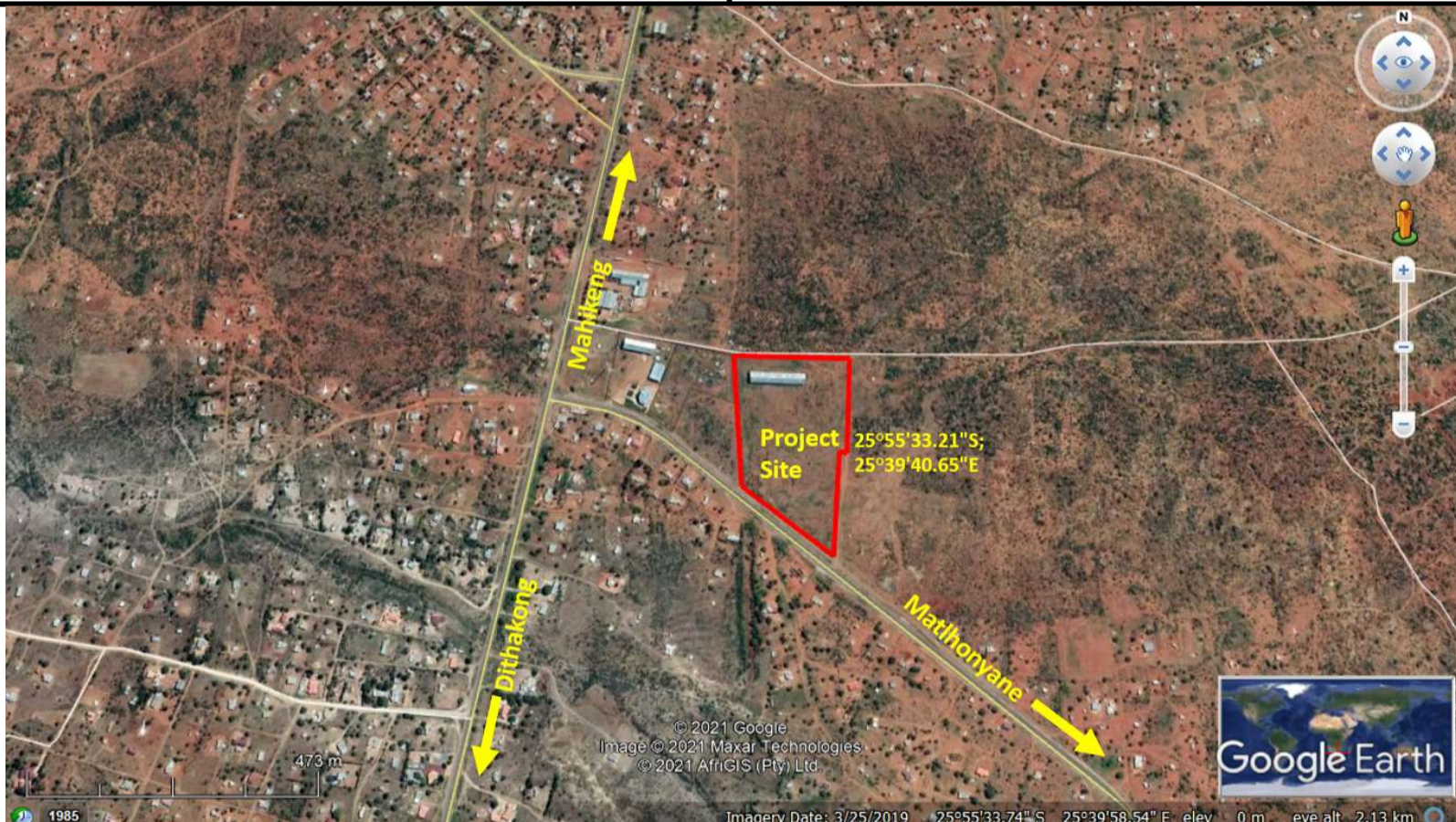


Figure 1: Aerial image showing proposed project in context/ Setshwantsho 2: Setshwantsho se se bontshang porojeke e e akantshiwang ka botlalo

Should you wish to register as an Interested and Affected Party on the project or to make suggestions and/or comments on this proposal, kindly provide these together with your name, contact details (preferred method of communication, e.g. e-mail cellphone) and an indication of any interest which you (or the organisation you represent) have in the application to Ntsebo Mkhize on- **Tel:** 011 568 0916; **Cell:** 072 550 9669; **Fax:** 086 474 5173; **e-mail:** XXXXX; or **Post:** Postnet Suite 39, P. Bag X11, Honeydew, 2040.

PLEASE REGISTER YOUR INTEREST IN THE PROJECT FOR THIS FIRST ROUND OF THE PUBLIC PARTICIPATION PROCESS BY NO LATER THAN XXXXXXXX

Fa o batla go ikwadisa mo potojekeng eno jaaka Mokgatlho o o Kgatlhegang kgotsa o o Amegang kgotsa go ntsha dikakantsho le/kgotsa dikakgelo mo katlenegisong eno, tsweetswee romela dilo tse di latelang mmogo le leina la gago, dintlha tsa go ikgolaganya (mokgwa o o o ratang wa puisano, s.k. imeile selula) le kgatlhego epe e wena (kgotsa mokgatlho o o o emelang) o nang le yone mo kopong go Ntsebo Mkhize mo- **Mog:** 011 568 0916; **Sel:** 072 550 9669; **Fekese:** 086 474 5173; **imeile:** XXXXX; kgotsa **Poso:** Postnet Suite 39, P. Bag X11, Honeydew, 2040.

TSWEETSWEE KWADISA KGATLHEGO YA GAGO MO POROJEKENG MO KAROLONG ENO YA NTLHA YA THULAGANYO YA GO NNA LE SEABE GA MORAFE PELE GA XXXXXXXX

QPCINT