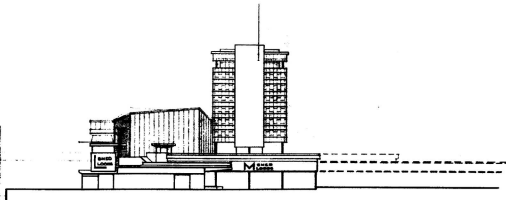
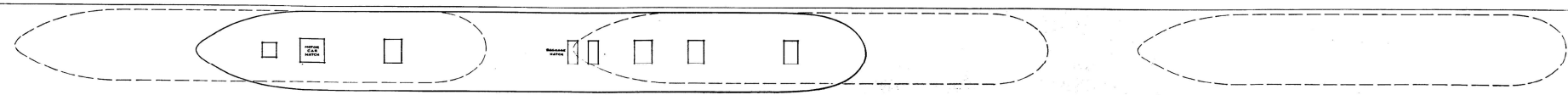
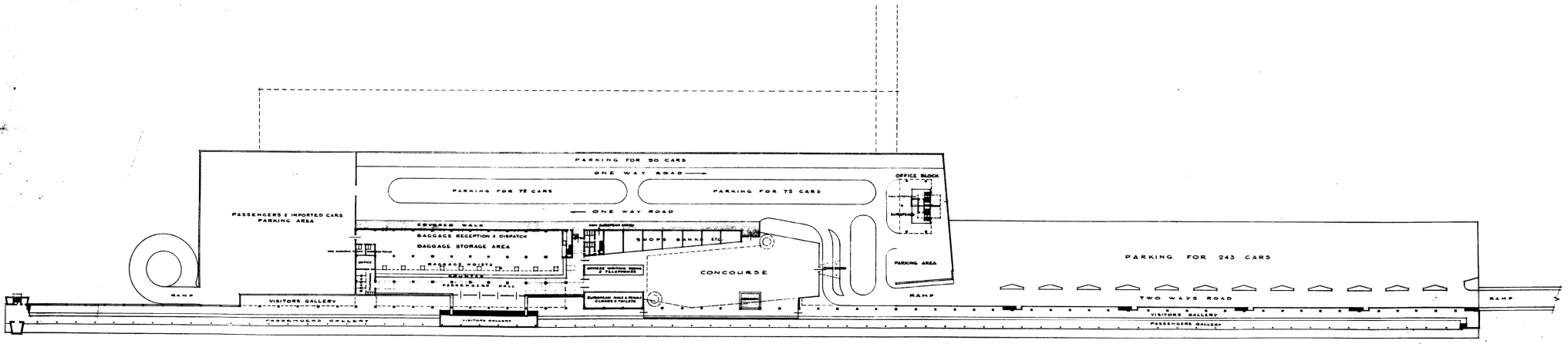


SOUTH ELEVATION



NORTH ELEVATION



PROPOSED HARBOUR TERMINAL AT T JETTY DURBAN FOR THE S. A. R. & M. — TERMINUS FLOOR LAYOUT & ELEVATIONS

IMPORTANT NOTE:
 ADD + 0.20 FOOT (APPROX 21mm) TO ALL LEVELS ON THIS DRAWING TO OBTAIN LEVEL WITH RESPECT TO L.W.O.S.T.

MICHAL S. ZAKRZEWSKI & PARTNERS
 CONSULTING CIVIL AND STRUCTURAL ENGINEERS
 RANGERSWEEDE WYOMERS STREET/STURGEON ENGINEERS
 DURBAN 120 WILSON ROAD/STURGEON ENGINEERS 41767-0920
 ETHELHEIM 120 WILSON ROAD/STURGEON ENGINEERS 41767-0920

DESIGNED BY:	DATE: 1968	SCALE: AS SHOWN
CHECKED BY:	DATE: 1968	SCALE: AS SHOWN
APPROVED BY:	DATE: 1968	SCALE: AS SHOWN