

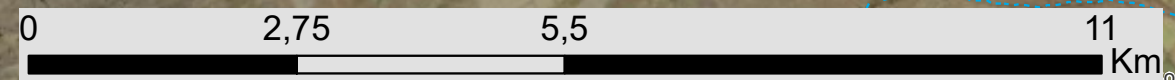
Harmony Joel Solar PV Free State Province

Locality Map

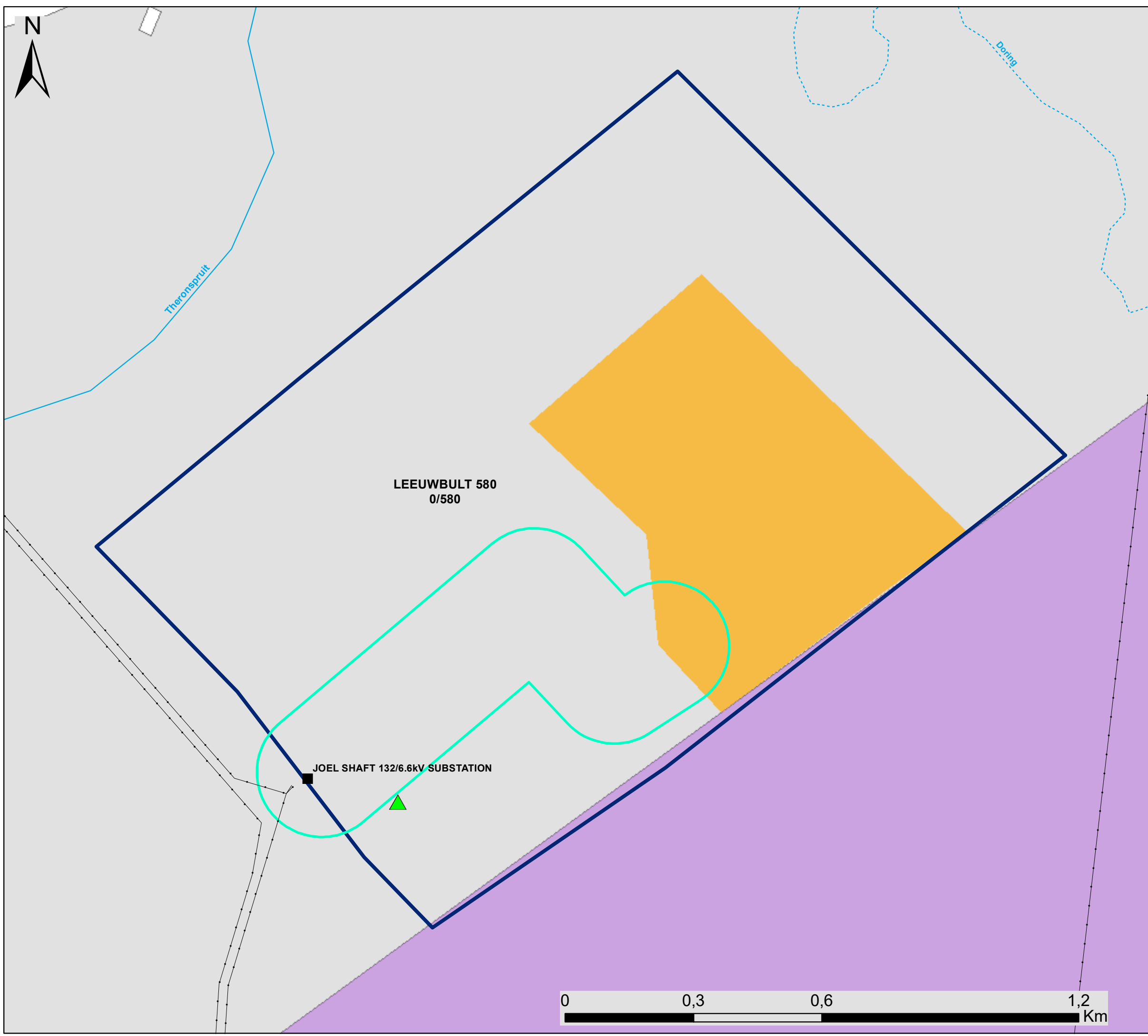
Legend

- Town
- Harmony Joel Gold Plant
- Eskom Substation
- Existing Power Line
- Main Road
- Secondary Road
- Perennial River
- Non-perennial River
- H. J. Joel Private Nature Reserve
- Proposed Development**
- Affected Property (Project Site)
- Joel Development Area
- Development Footprint
- Grid Connection Corridor (300m wide)

Scale: 1:95 000
 Projection: GCS_WGS_1984
 Map Ref: Joel Locality Map



Theunissen



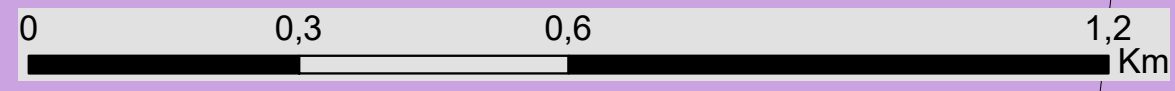
Harmony Joel Solar PV Free State Province

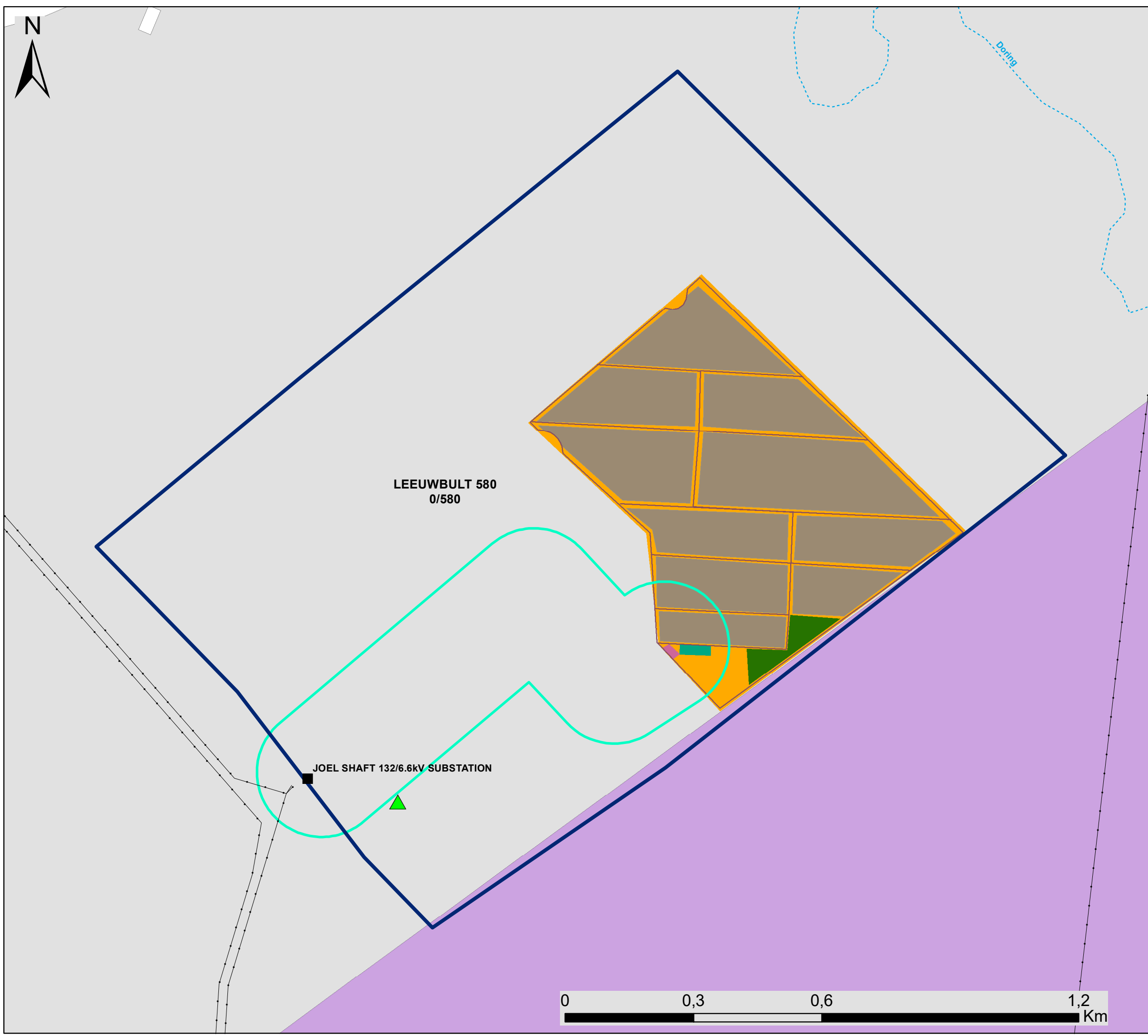
Layout Map

Legend

- ▲ Harmony Joel Gold Plant
- Eskom Substation
- Existing Power Line
- Perennial River
- - - Non-perennial River
- H. J. Joel Private Nature Reserve
- Proposed Development**
- Affected Property (Project Site)
- ▭ Joel Development
- Development Footprint
- ▭ Grid Connection Corridor (300m wide)

Scale: 1:95 000
 Projection: GCS_WGS_1984
 Map Ref: Joel Layout Map



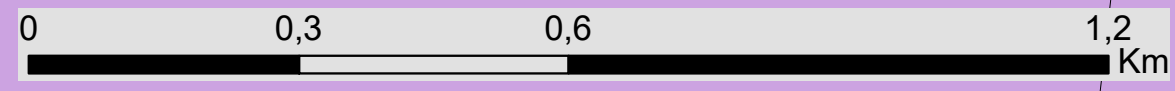


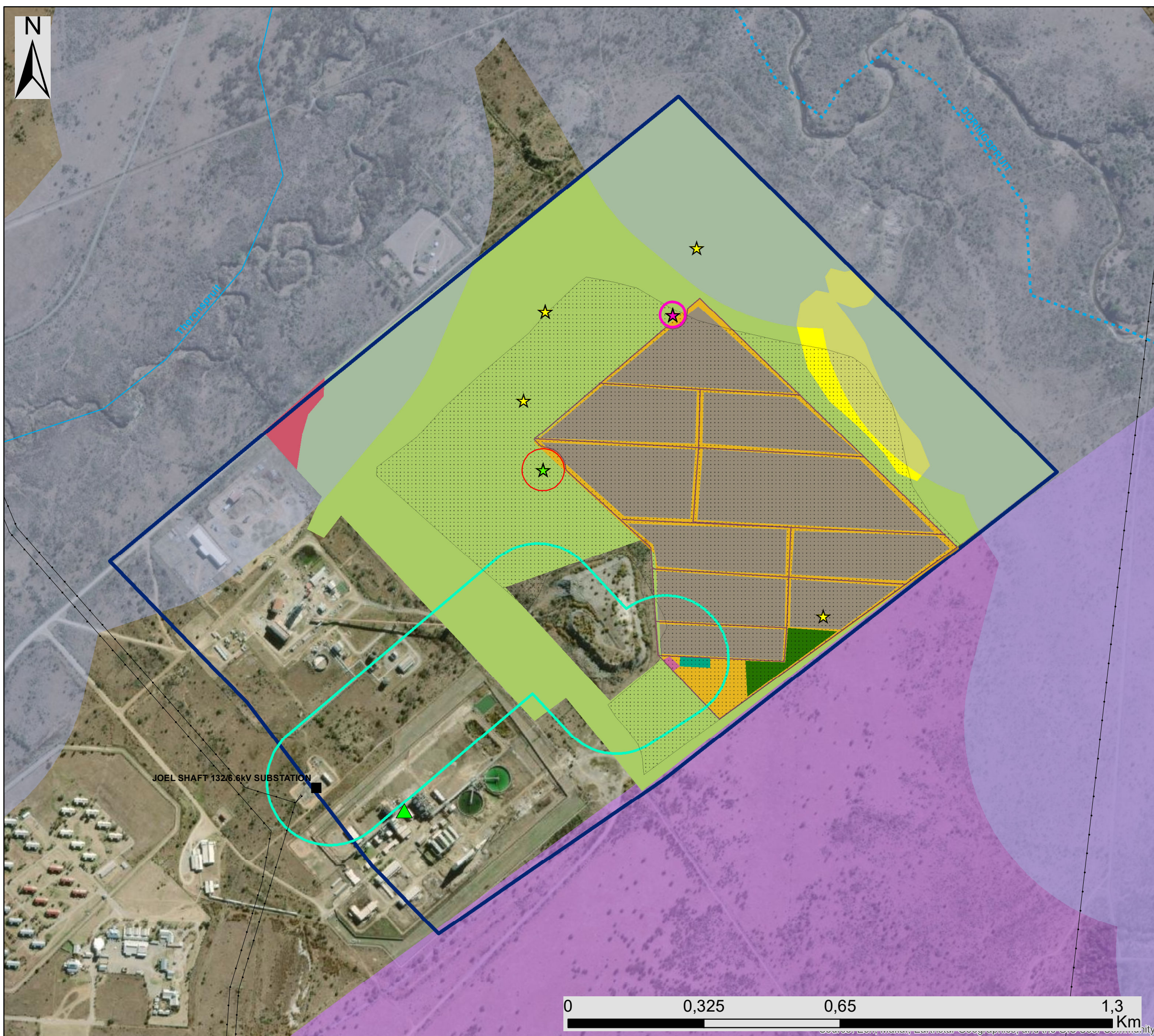
Harmony Joel Solar PV Free State Province

Layout Map

- Legend**
- SymbolID**
- ▲ Harmony Joel Gold Plant
 - Eskom Substation
 - Existing Power Line
 - Perennial River
 - - - Non-perennial River
 - H. J. Joel Private Nature Reserve
- Proposed Development**
- Affected Property (Project Site)
 - ▭ Joel Development Area
 - ▭ Development Footprint
 - ▭ PV Arrays
 - ▭ O&M and Storage Hub
 - ▭ Laydown Area
 - Internal Roads
 - ▭ On-Site Facility Substation & Switching Station Hub
 - ▭ Grid Connection Corridor (300m wide)

Scale: 1:95 000
 Projection: GCS_WGS_1984
 Map Ref: Joel Layout Map





Harmony Joel Solar PV Free State Province

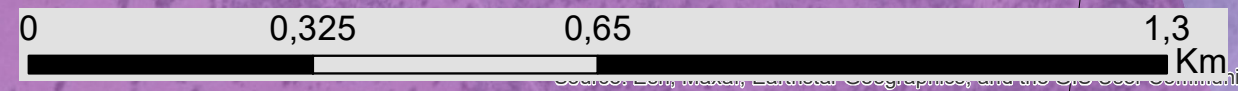
Sensitivity & Layout Map

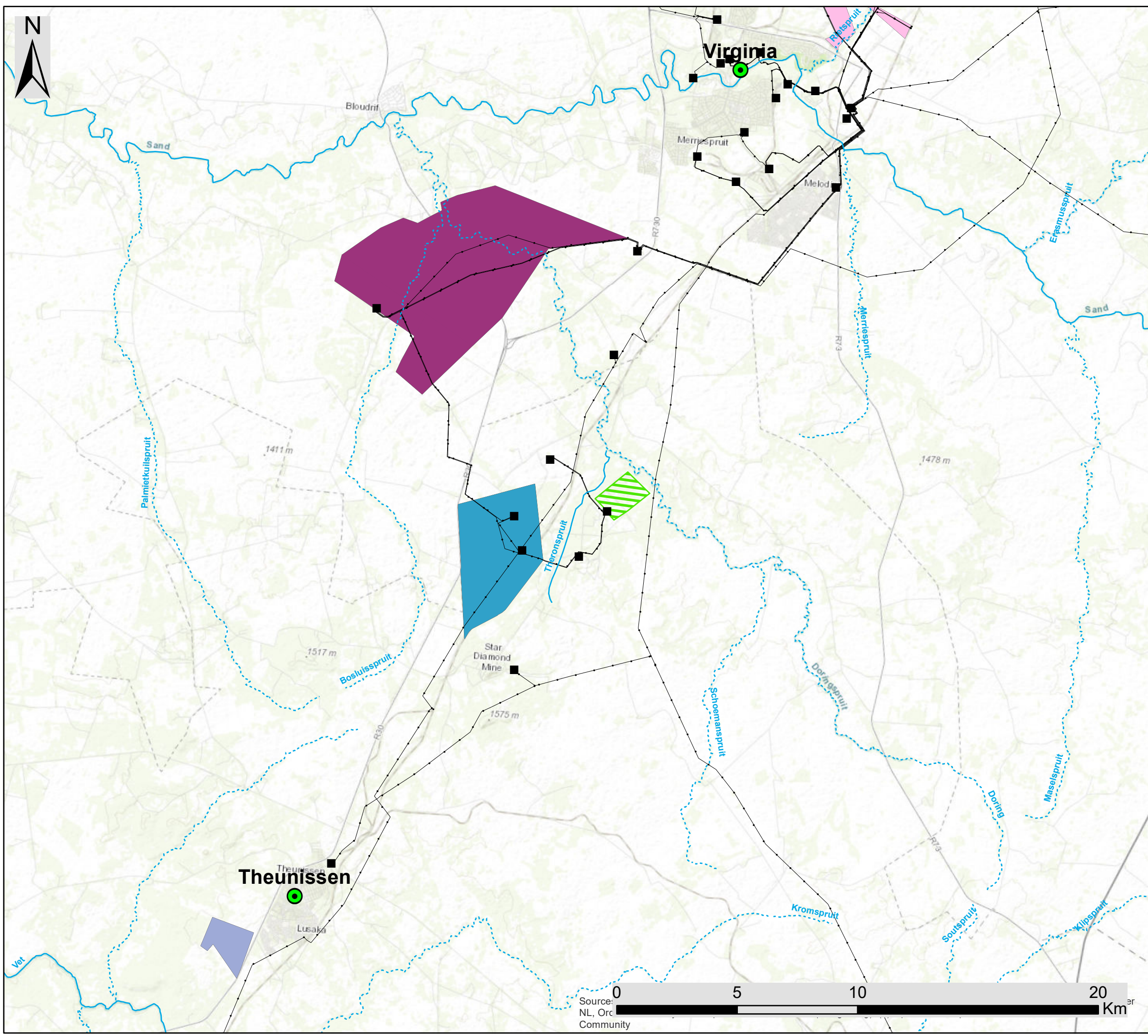
Legend

- Harmony Joel Gold Plant
- Eskom Substation
- Existing Power Line
- Perennial River
- Non-perennial River
- H. J. Joel Private Nature Reserve
- Proposed Development**
- Joel Development Area
- Development Footprint
- PV Arrays
- O&M and Storage Hub
- Laydown Area
- Internal Roads
- On-Site Facility Substation & Switching Station Hub
- Grid Connection Corridor (300m wide)
- Environmental Sensitivities**
- Heritage Sensitivity**
- Archaeological Artefacts (Low Heritage Sensitivity)
- Concentration of Artefacts (Low to Medium Heritage Sensitivity)
- Concentration of Artefacts (High Heritage Sensitivity)
- Medium Heritage Sensitivity 30m Buffer (No-Go Area for JL2)
- High Heritage Sensitivity 50m Buffer (No-Go Area for JL5)
- Avifauna Sensitivity**
- River 500m Buffer (High Avifauna Sensitivity)
- Open Savannoid Grassland (Medium Avifauna Sensitivity)
- Ecological Sensitivity**
- Delineated Wetland Area (High Ecological Sensitivity)
- Riparian Zone (High Ecological Sensitivity)
- Natural Riparian Thicket (Medium Ecological Sensitivity)

JOEL SHAFT 132/6.6kV SUBSTATION

Scale: 1:16 000
 Projection: GCS_WGS_1984
 Map Ref: Joel Sensitivity Map





Harmony Joel Solar PV Free State Province

Cumulative Map

Legend

- Town
- Eskom Substation
- Existing Power Line
- Perennial River
- Non-perennial River

Harmony Proposed Development

- Proposed Joel Development Area

Properties Linked to Authorised Renewable Energy Facilities (REEA Q1 2022)

- Beatrix Mine Shaft 4 PV Facility
- Farm Onverwag 728 PV Facility
- Beatrix Mine Shaft 2 PV Facility
- Sonvanger PV Facility

Scale: 1:150 000
 Projection: GCS_WGS_1984
 Map Ref: Joel Cumulative Map



Source: NL, Orc
 Community