

Harmony Moab Khotsong Solar PV Free State Province

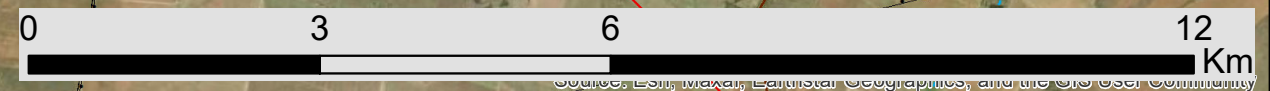
Locality Map

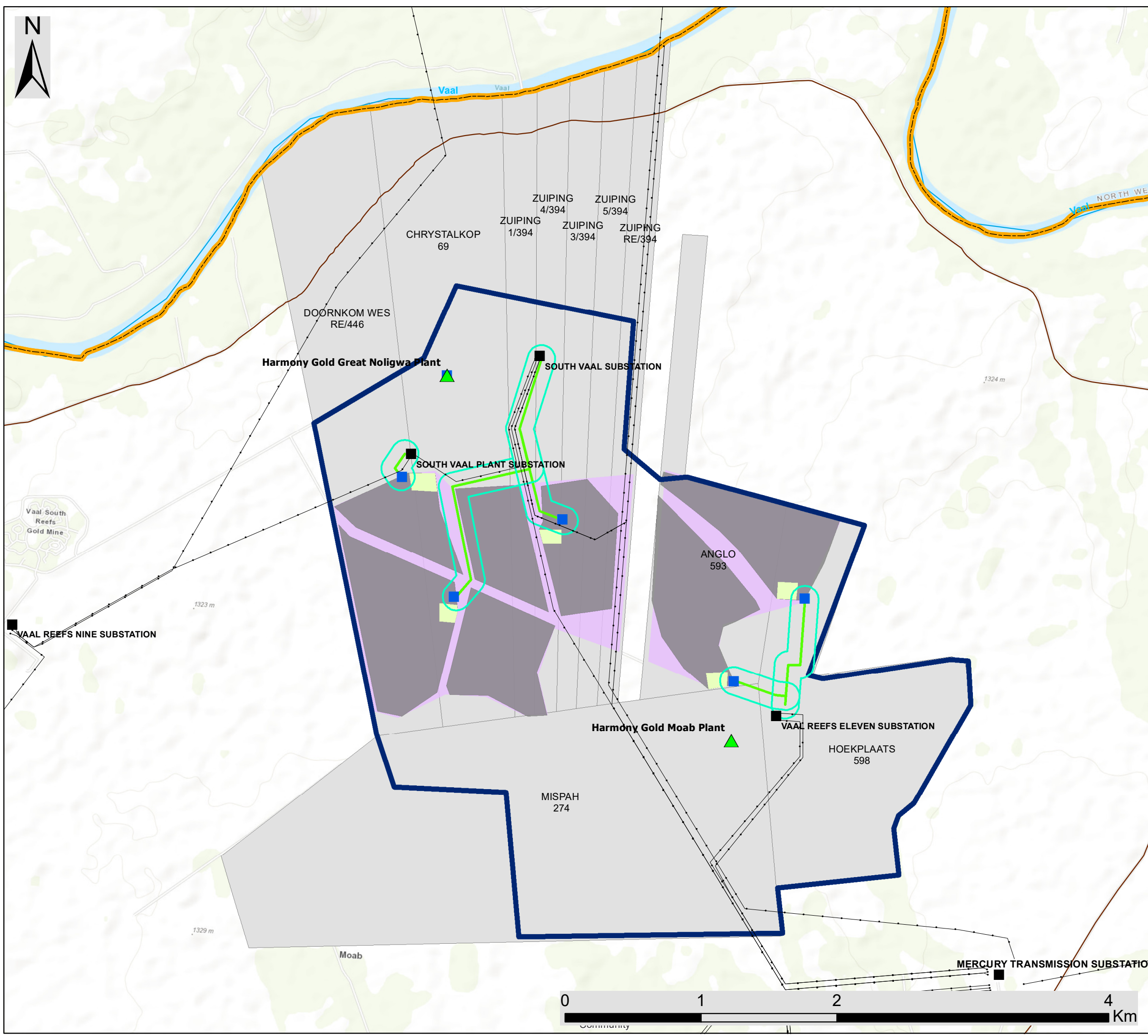
Legend

- Harmony Gold Mine Operations
- Town
- Eskom Substation
- Existing Power Line
- National Route
- Main Road
- Secondary Road
- Perennial River
- Non-perennial River
- Provincial Boundary
- Bushybend Private Nature Reserve
- Mispah Game Farm
- Proposed Development**
- Moab Khotsong Development
- Affected Properties
- Development Footprint
- Grid Connection Corridor (300m)



Scale: 1:75 000
 Projection: GCS_WGS_1984
 Map Ref: Harmony Moab Khotsong Locality Map





Harmony Moab Khotsong Solar PV Free State Province

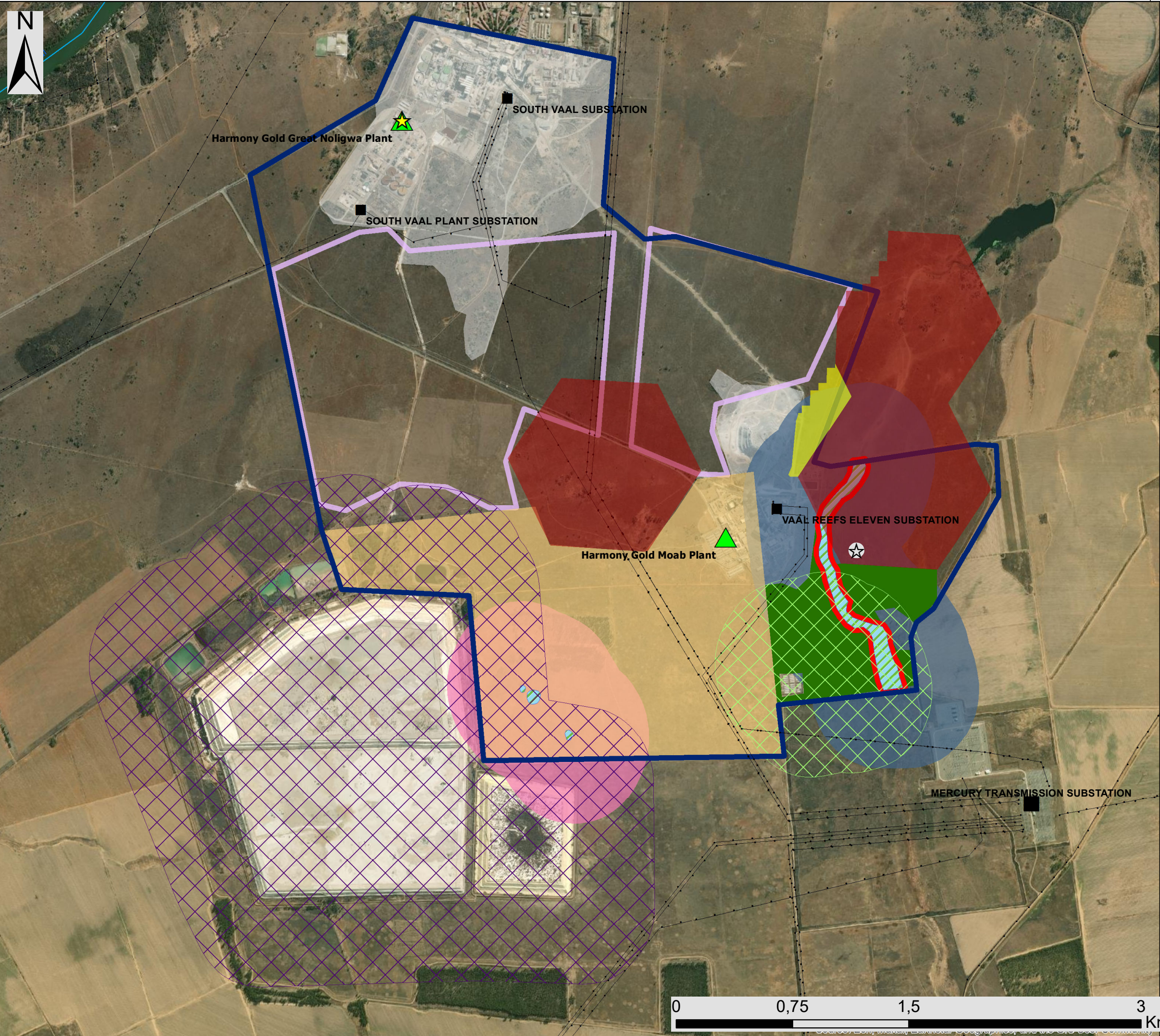
Layout Map

Legend

- ▲ Harmony Gold Mine Operations
- Eskom Substation
- Existing Power Line
- Secondary Road
- Perennial River
- Provincial Boundary
- Mispah Game Farm
- Proposed Development**
- Moab Khotsong Development
- Affected Properties
- Development Footprint
- PV Arrays
- Grid Connection Corridor (300m)
- Substation
- O&M and Laydown Area
- Power Line

Scale: 1:25 000
 Projection: GCS_WGS_1984
 Map Ref: Harmony Moab Khotsong Layout Map

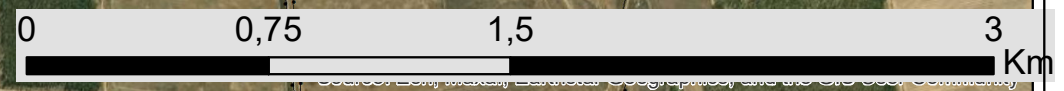


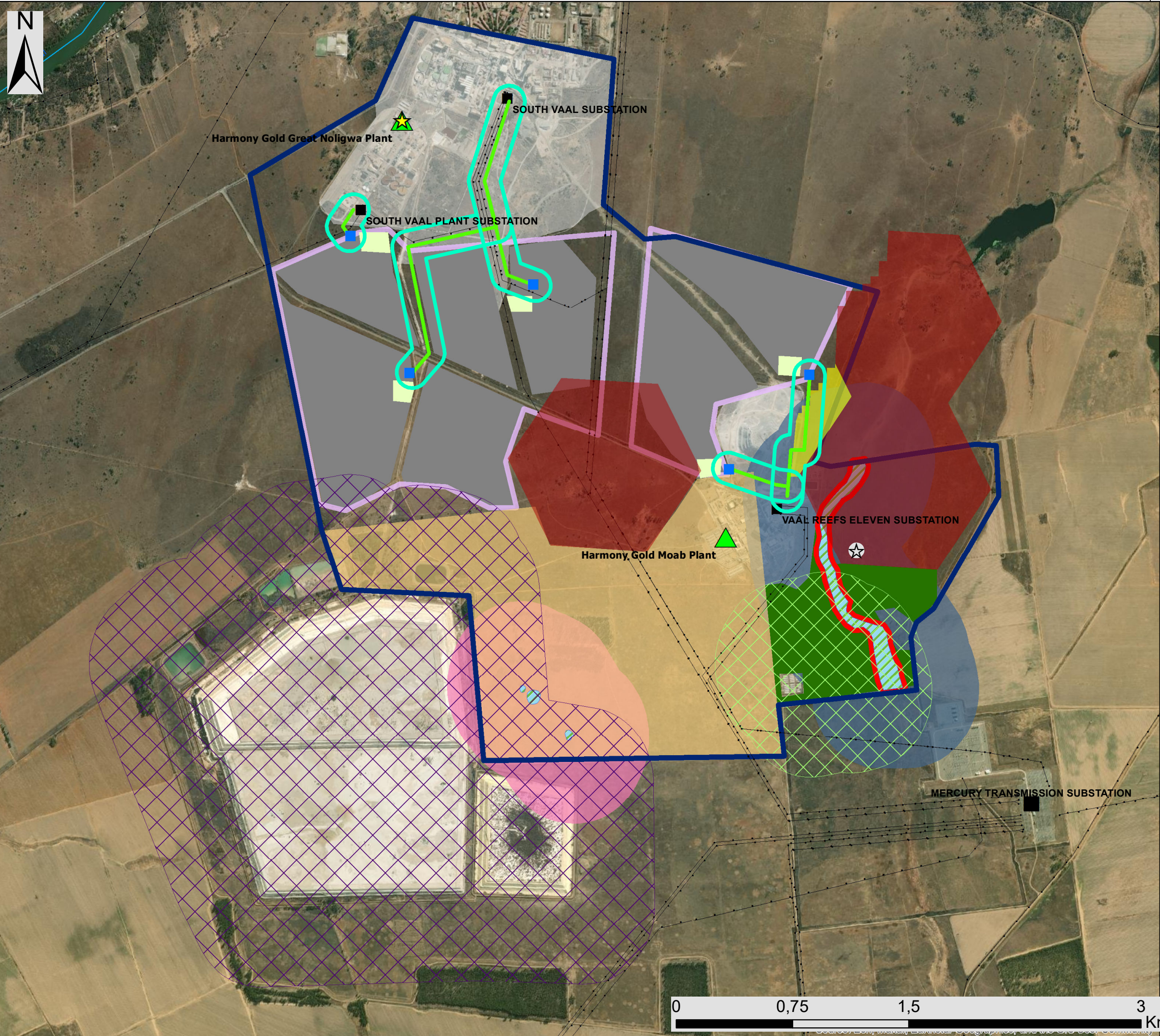


Harmony Moab Khotsong Solar PV Free State Province Sensitivity Map

- Legend**
- Harmony Gold Mine Operations
 - Eskom Substation
 - Existing Power Line
 - Perennial River
- Proposed Development**
- Moab Khotsong Development Area
 - Development Footprint
- Environmental Sensitivities**
- Heritage Sensitivity**
- Archaeological Sites (Low Heritage Sensitivity)
 - Archaeological Artefacts (Medium Heritage Sensitivity)
 - Archaeological Artefacts 30m Buffer (No-Go Area)
- Ecological Sensitivity**
- CBA 1 (Very High Ecological Sensitivity)
 - CBA 2 (High Ecological Sensitivity)
 - Wetlands/Stream (No-Go Area)
 - Wetland 21m Buffer (No-Go Area)
 - Mispah Game Farm (Very High Ecological Sensitivity)
 - Threatened Ecosystem (High Ecological Sensitivity)
- Avifauna Sensitivity**
- Tailings Dam 500m Buffer (High Avifauna Sensitivity)
 - Wet Area/Owl Habitat (High Avifauna Sensitivity)
 - Depressions 500m Buffer (High Avifauna Sensitivity)
 - Wetlands/Stream 500m Buffer (High Avifauna Sensitivity)
- Social Sensitivity**
- Transformed/Built-up Area (Low Sensitivity)

Scale: 1:20 000
 Projection: GCS_WGS_1984
 Map Ref: Moab Khotsong Sensitivity Map



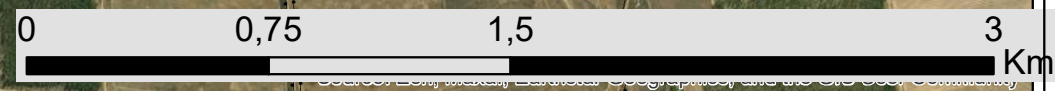


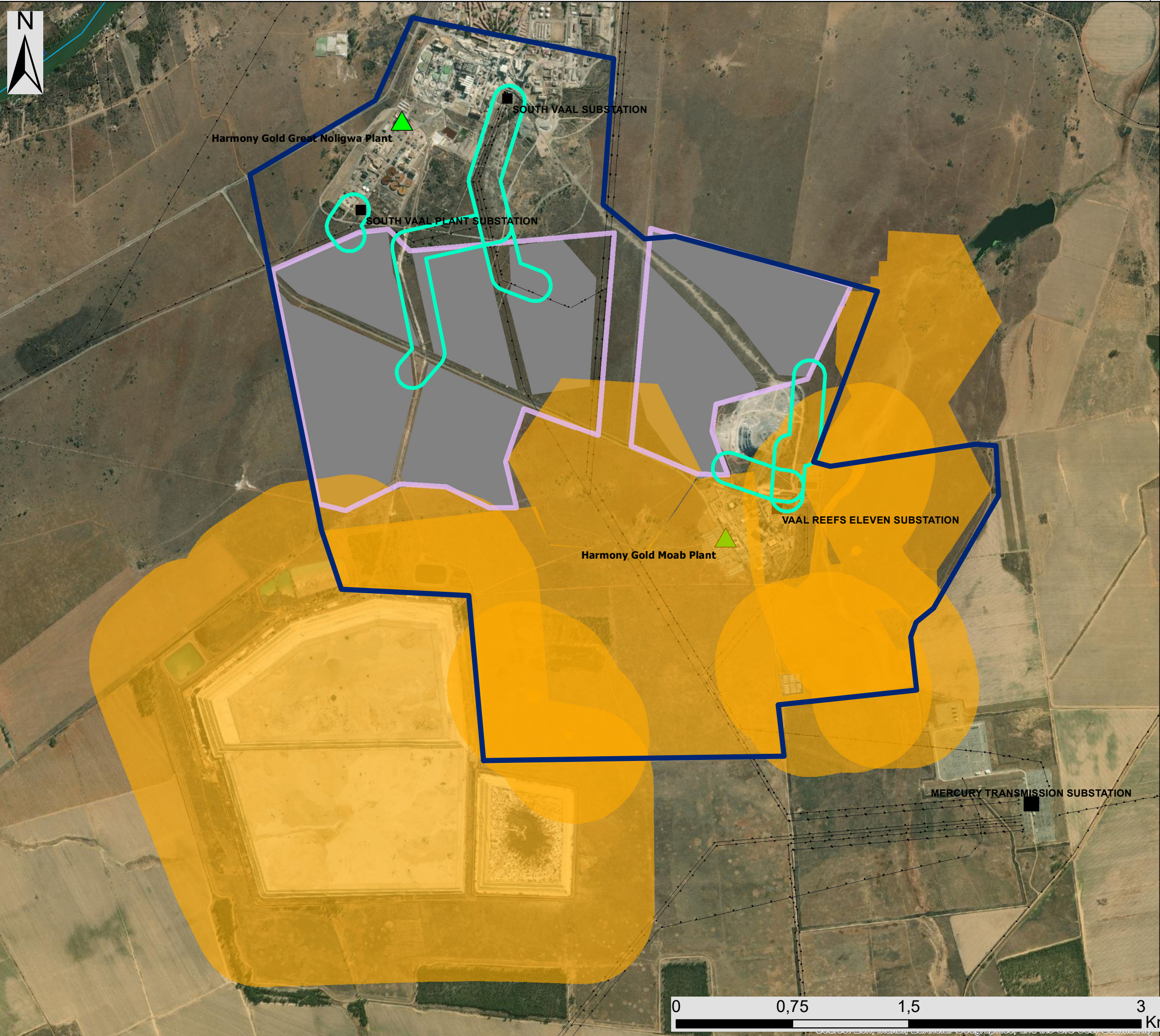
Harmony Moab Khotsong Solar PV Free State Province Sensitivity & Layout Map

Legend

- Harmony Gold Mine Operations
- Eskom Substation
- Existing Power Line
- Perennial River
- Proposed Development**
- Moab Khotsong Development Area
- Development Footprint
- PV Arrays
- Grid Connection Corridor (300m)
- Power Line
- Substation
- O&M and Laydown Area Hub
- Environmental Sensitivities**
- Heritage Sensitivity**
- Archaeological Sites (Low Heritage Sensitivity)
- Archaeological Artefacts (Medium Heritage Sensitivity)
- Archaeological Artefacts 30m Buffer (No-Go Area)
- Ecological Sensitivity**
- CBA 1 (Very High Ecological Sensitivity)
- CBA 2 (High Ecological Sensitivity)
- Wetlands/Stream (No-Go Area)
- Wetland 21m Buffer (No-Go Area)
- Mispah Game Farm (Very High Ecological Sensitivity)
- Threatened Ecosystem (High Ecological Sensitivity)
- Avifauna Sensitivity**
- Tailings Dam 500m Buffer (High Avifauna Sensitivity)
- Wet Area/Owl Habitat (High Avifauna Sensitivity)
- Depressions 500m Buffer (High Avifauna Sensitivity)
- Wetlands/Stream 500m Buffer (High Avifauna Sensitivity)
- Social Sensitivity**
- Transformed/Built-up Area (Low Sensitivity)

Scale: 1:20 000
 Projection: GCS_WGS_1984
 Map Ref: Moab Khotsong Sensitivity & Layout Map



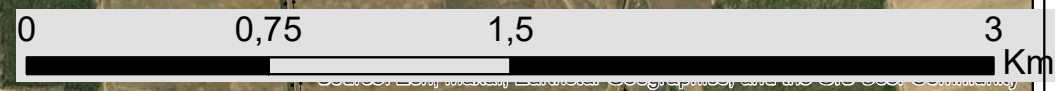


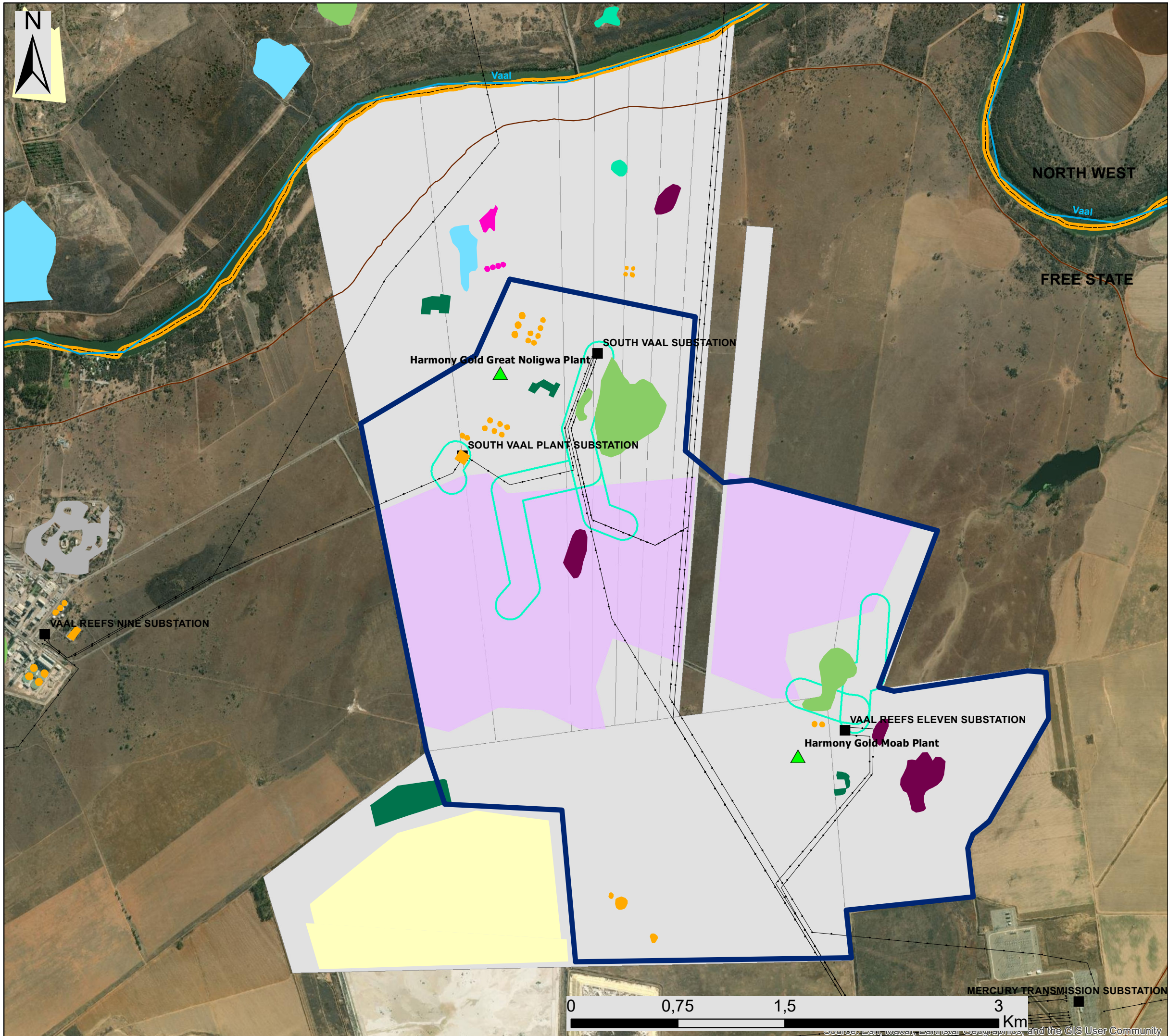
Harmony Moab Khotsong Solar PV Free State Province High Sensitivity Map

Legend

-  Harmony Gold Mine Operations
-  Eskom Substation
-  Existing Power Line
-  Perennial River
- Proposed Development**
-  Moab Khotsong Development
-  Development Footprint
-  PV Arrays
-  Grid Connection Corridor (300m)
- Environmental Sensitivities**
-  High Sensitivity

Scale: 1:20 000
 Projection: GCS_WGS_1984
 Map Ref: Moab Khotsong High Sensitivity Map





Harmony Moab Khotsong Solar PV Free State Province

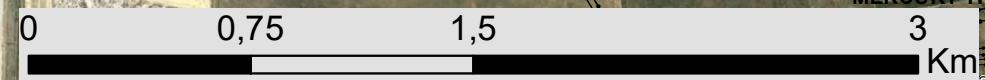
Land Use Map

Legend

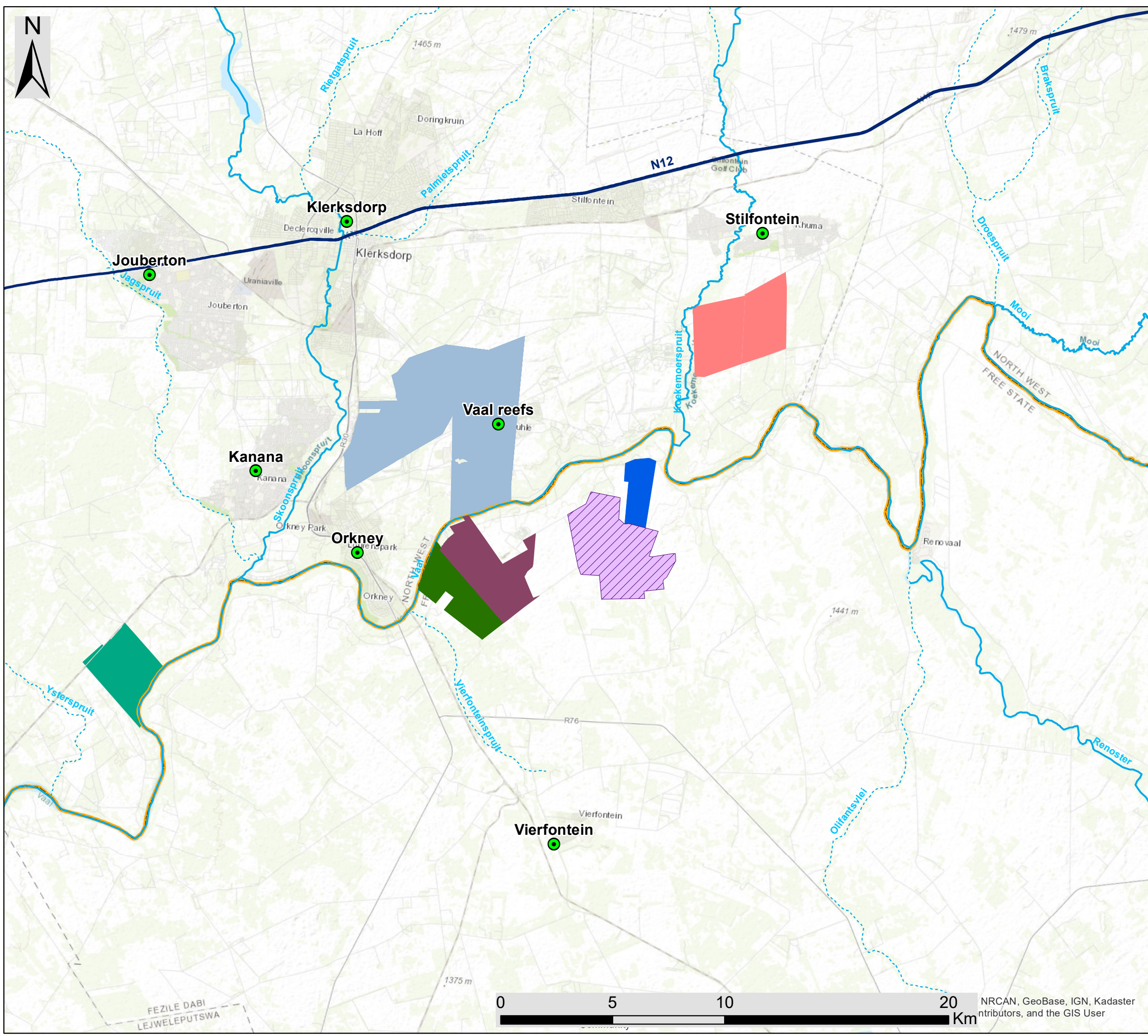
- ▲ Harmony Gold Mine Operations
- Eskom Substation
- Existing Power Line
- Secondary Road
- Perennial River
- - - Non-perennial River
- Provincial Boundary
- Proposed Development**
- Moab Khotsong Development
- Affected Properties
- Development Footprint
- Grid Connection Corridor (300m)
- Land Use**
- Digging
- Excavation
- Mine Dump
- Slimes Dam
- High Urban Density
- Dam
- Large Reservoir
- Sewerage Works
- Water Tank



Scale: 1:75 000
 Projection: GCS_WGS_1984
 Map Ref: Harmony Moab Khotsong Land Use Map



Source: Esri, DeLorme, Garmin, IGN, Intermap, Intergraph, Swire, GEBCO, USGS, AeroGRID, IGN, Esri, and the GIS User Community



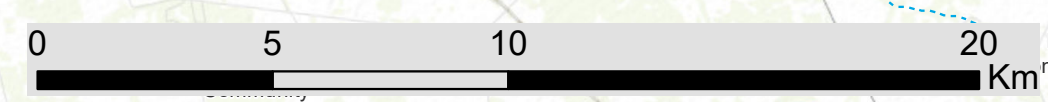
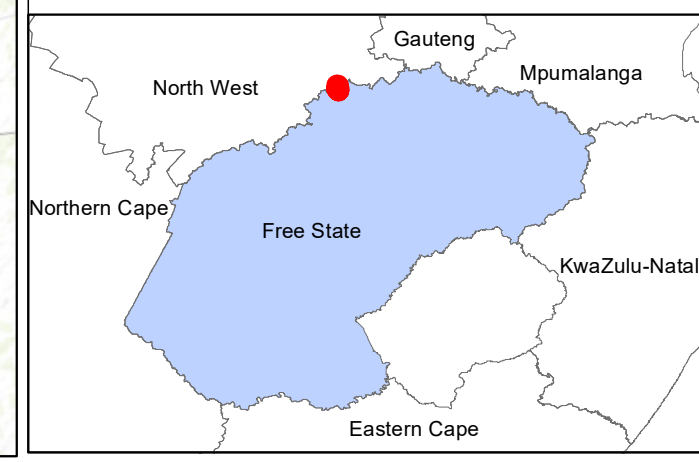
Harmony Moab Khotsong Solar PV Free State Province

Cumulative Map

Legend

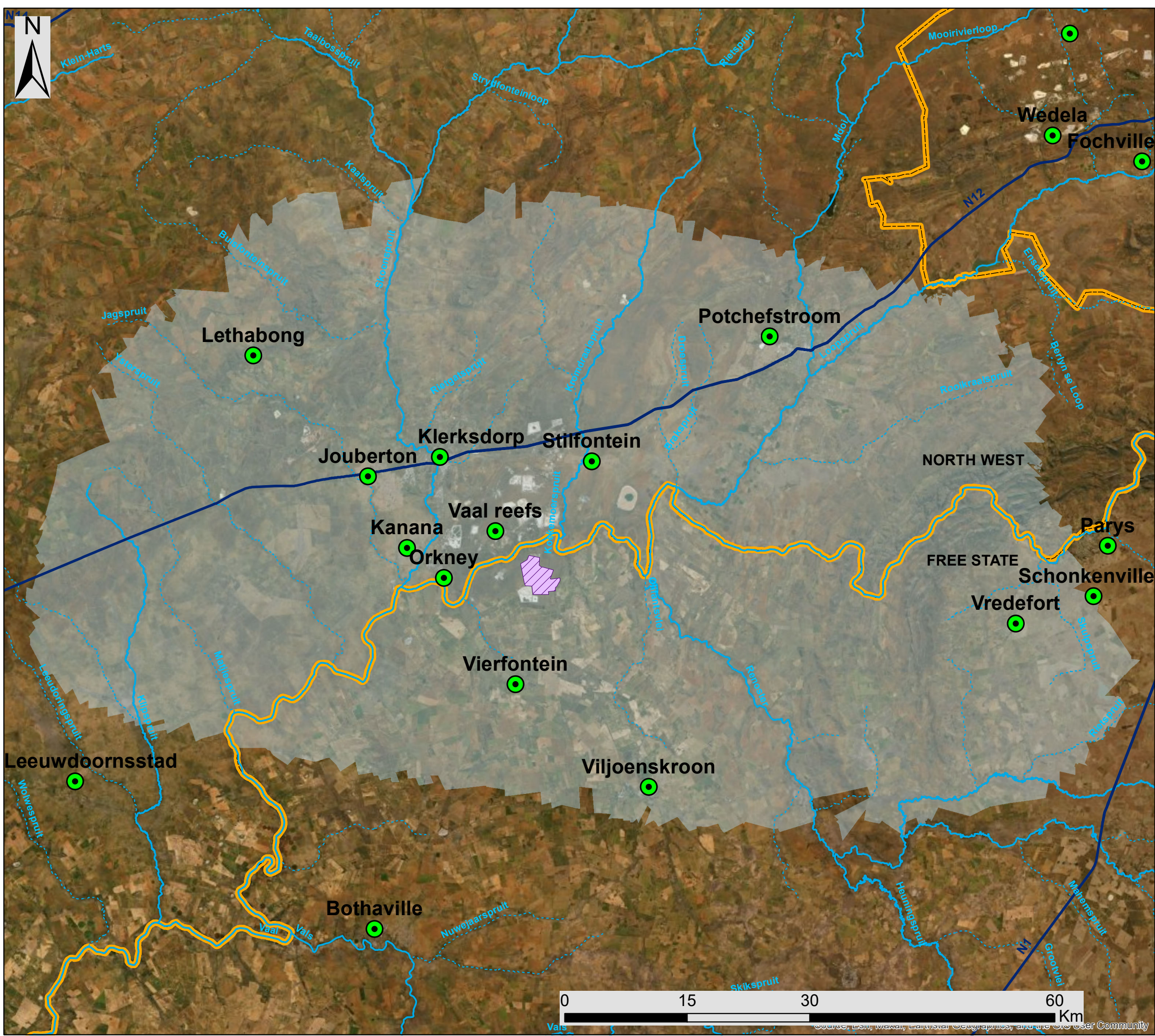
- Town
- National Route
- Perennial River
- Non-perennial River
- Provincial Boundary
- Proposed Development**
- Moab Khotsong Development Area
- Properties Linked To Authorised Renewable Energy Facilities (REEA 2022 Q2)**
- Buffels Solar PV Facility
- Orkney Solar PV Facility
- Paleso Solar PV Facility
- VRS 1, 2,3 Solar PV Facility
- Siyanda Solar PV Facility
- Thakadu Solar PV Facility

Scale: 1:160 000
 Projection: GCS_WGS_1984
 Map Ref: Harmony Moab Khotsong Cumulative Map



NRCAN, GeoBase, IGN, Kadaster
 contributors, and the GIS User








FEZILE DABI
 LEJWELEPUTSWA



Harmony Moab Khotsong Solar PV Free State Province

REDZ Map

Legend

-  Town
-  National Route
-  Perennial River
-  Non-perennial River
-  Provincial Boundary
-  REDZ2 (Klerksdorp)
- Proposed Development**
-  Moab Khotsong Development Area



Scale: 1:75 000
 Projection: GCS_WGS_1984
 Map Ref: Harmony Moab Khotsong REDZ Map



Source: Esri, iCairns, Earthstar Geographics, and the GIS User Community