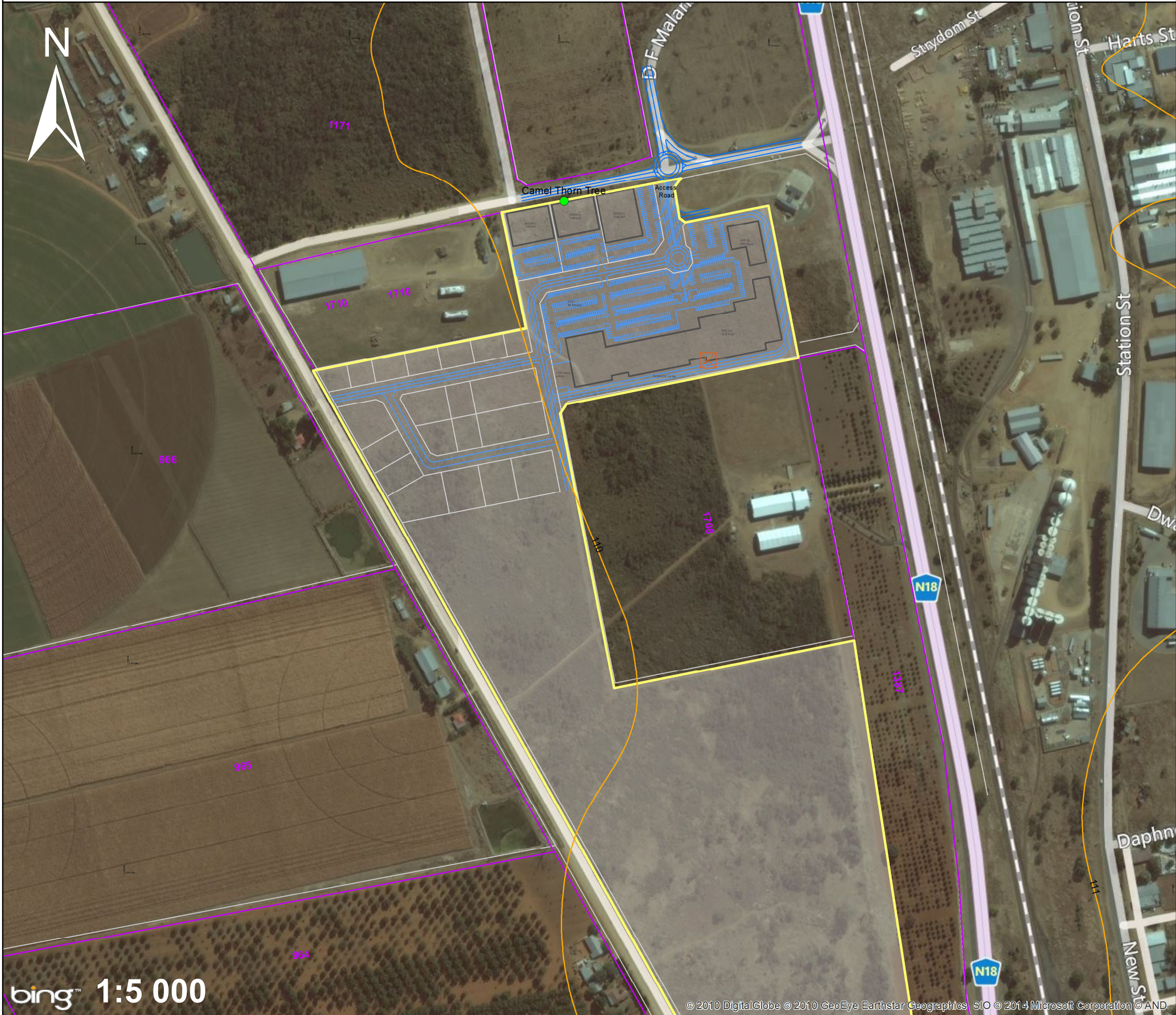


**The Proposed Development of a Retail and Commercial Development Node on a Portion of Holding 2027 of the Vaal Harts Settlement A Agricultural Holdings, Vryburg RD, Phokwane Municipality, Northern Cape Province.**



**Hartswater Retail and Commercial Development Site Plan**

**Legend**

- Proposed Development Area
- Erven
- Contours (5m)
- Roads**
- ◆ ◆ N
- Railways

**Camel Thorn Tree**

27° 45' 39.7"S  
24° 47' 11.4"E

**Photograph point**

27°45'46.27"S  
24°47'17.61"E

**Compiled by:**



DATUM: WGS 84  
PROJECTION: GEOGRAPHIC  
DATE: MARCH 2014

