

**PROPOSED
CONSTRUCTION OF THE
HEUWELTJES WIND
ENERGY FACILITY
NEAR BEAUFORT WEST,
WESTERN CAPE PROVINCE
BROAD LAND COVER
CLASSIFICATION**

Legend

-  National Route (N12)
-  Secondary/Main Access
-  Existing High Voltage Power Lines (400kV)
-  Rivers
-  Heuveltjes WEF Application
-  Preliminary Turbine Development Area
-  Proposed Substation Site Alternatives

Land Cover Classification

-  Barren Land
-  Built-Up Areas
-  Cultivated Land
-  Forested Land
-  Grassland
-  Shrubland
-  Wetlands / Waterbodies

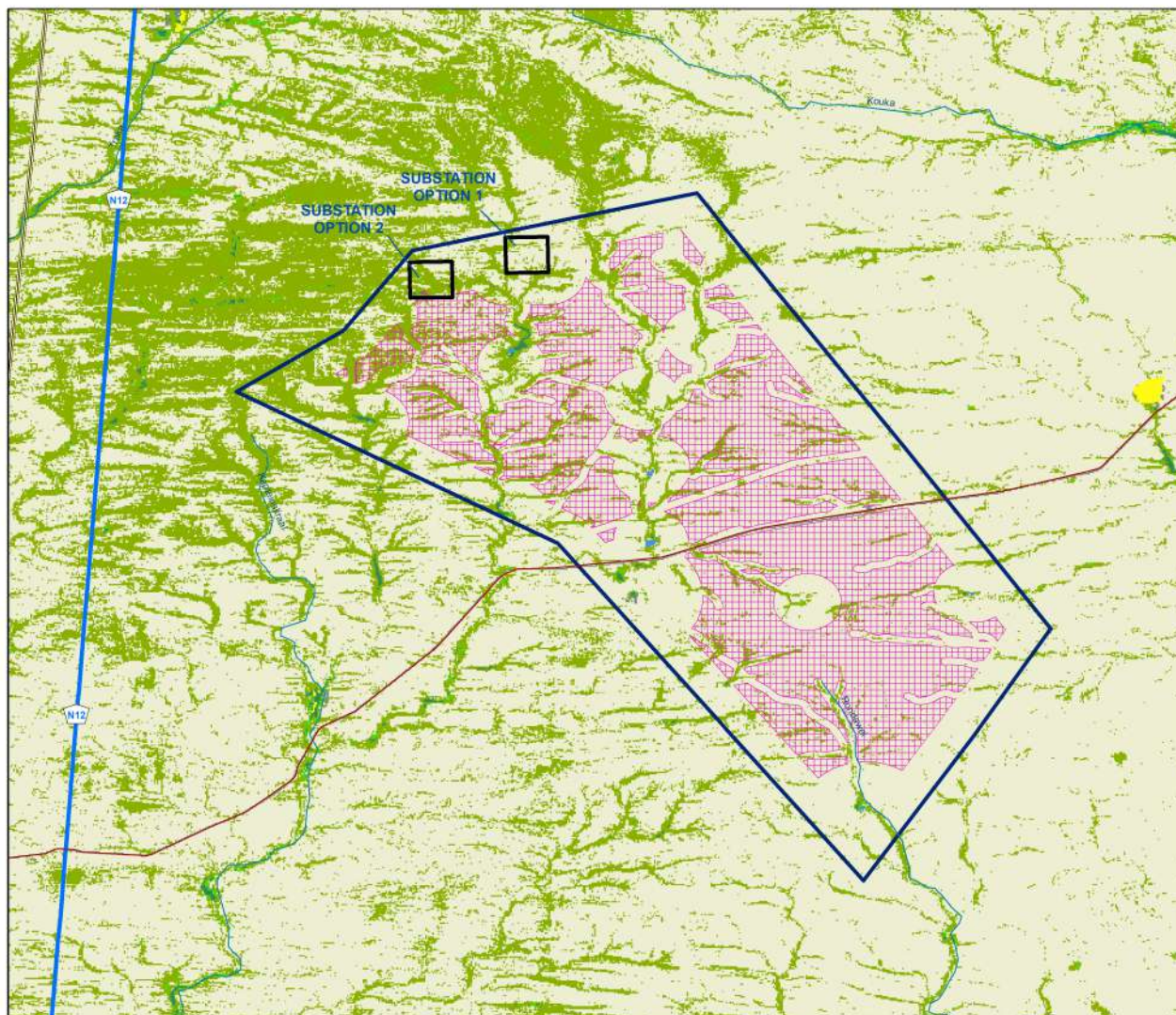
Source:
ESKOM, 2012
NFEPA, 2011
2018 SA NATIONAL LAND COVER
(© GEOTERRAIMAGE - 2018)

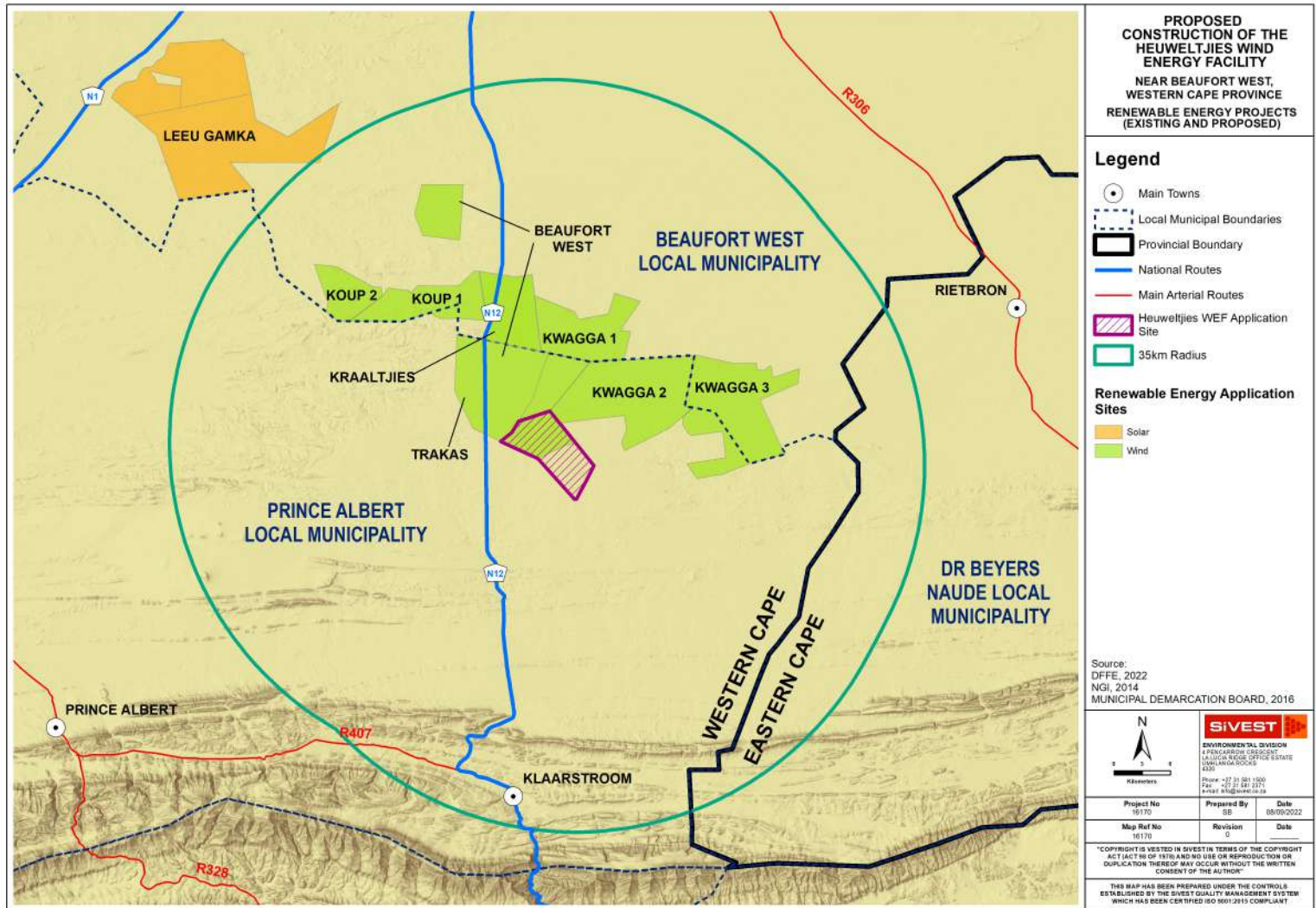


Project No 15170	Prepared By SB	Date 25/11/2022
Map Ref No 15170	Revision 0	Date

*COPYRIGHT IS VESTED IN SIVEST IN TERMS OF THE COPYRIGHT ACT ACT 94 OF 1978 AND NO USE OR REPRODUCTION OR DUPLICATION THEREOF MAY OCCUR WITHOUT THE WRITTEN CONSENT OF THE AUTHOR.







THIS MAP HAS BEEN PREPARED UNDER THE CONTROLS ESTABLISHED BY THE SIVEST QUALITY MANAGEMENT SYSTEM WHICH HAS BEEN CERTIFIED ISO 9001:2015 COMPLIANT





**PROPOSED
CONSTRUCTION OF THE
HEUWELTJES WIND
ENERGY FACILITY
NEAR BEAUFORT WEST,
WESTERN CAPE PROVINCE
SITE LOCALITY**

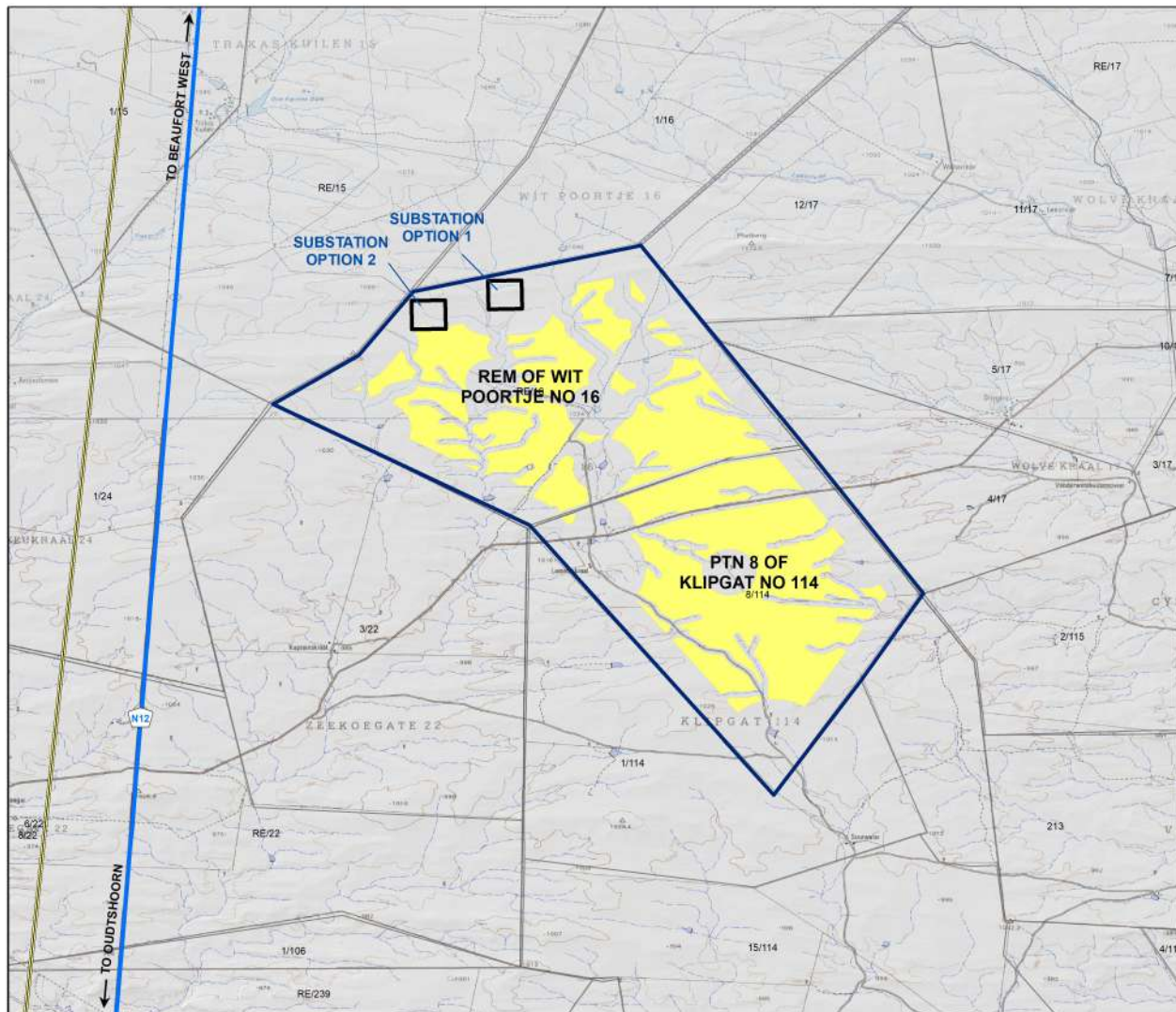
Legend

-  National Routes
-  Existing High Voltage Power Lines (400kV)
-  Farm Portions
-  Heuweltjes WEF Application Site
-  Preliminary Turbine Development Area
-  Proposed Substation Site Alternatives

Source:
DEMARCATIION BOARD, 2016
ESKOM, 2012
NGI, 2014



Project No 15170	Prepared By SB	Date 30/09/2022
Map Ref No 15170	Revision 0	Date
*COPYRIGHT IS VESTED IN SIVEST IN TERMS OF THE COPYRIGHT ACT ACT 97 OF 1978 AND NO USE OR REPRODUCTION OR DUPLICATION THEREOF MAY OCCUR WITHOUT THE WRITTEN CONSENT OF THE AUTHORITY		
THIS MAP HAS BEEN PREPARED UNDER THE CONTROLS ESTABLISHED BY THE SIVEST QUALITY MANAGEMENT SYSTEM WHICH HAS BEEN CERTIFIED ISO 9001:2015 COMPLIANT		



**PROPOSED
CONSTRUCTION OF THE
HEUWELTJES WIND
ENERGY FACILITY
NEAR BEAUFORT WEST,
WESTERN CAPE PROVINCE
VEGETATION CLASSIFICATION**

Legend

- National Route (N12)
- Secondary/Main Access Roads
- Existing High Voltage Power Lines (400kV)
- Rivers
- Heuveltjies WEF Application Site
- Preliminary Turbine Development Area
- Proposed Substation Site Alternatives

Vegetation Classification

 Gamka Karoo

Source:
ESKOM, 2012
NFEPA, 2011
SANBI, 2018



Project No 16170	Prepared By SB	Date 25/11/2022
Map Ref No 16170	Revision 0	Date

*COPYRIGHT IS VESTED IN SIVEST IN TERMS OF THE COPYRIGHT ACT (ACT 94 OF 1978) AND NO USE OR REPRODUCTION OR DUPLICATION THEREOF MAY OCCUR WITHOUT THE WRITTEN CONSENT OF THE AUTHORITY.

THIS MAP HAS BEEN PREPARED UNDER THE CONTROLS ESTABLISHED BY THE SIVEST QUALITY MANAGEMENT SYSTEM WHICH HAS BEEN CERTIFIED ISO 9001:2015 COMPLIANT

